

Weekly SLA Customer Report

Customer CIW Production
 Database ID 45



=====
 HARDDISK USAGE CIW_PRD_ORACLE1
 =====

	Total disk space on C (GB)	Free disk space on C (GB)	Total disk space on D (GB)	Free disk space on D (GB)	Total disk space on E (GB)	Free disk space on E (GB)
12-9-2015	276	139	279	185	279	117
11-9-2015	276	139	279	185	279	118
10-9-2015	276	139	279	185	279	119
9-9-2015	276	139	279	185	279	120
8-9-2015	276	140	279	185	279	120
7-9-2015	276	140	279	185	279	121
6-9-2015	276	140	279	185	279	123

=====
 HARDDISK USAGE CIW_PRD_ORACLE2
 =====

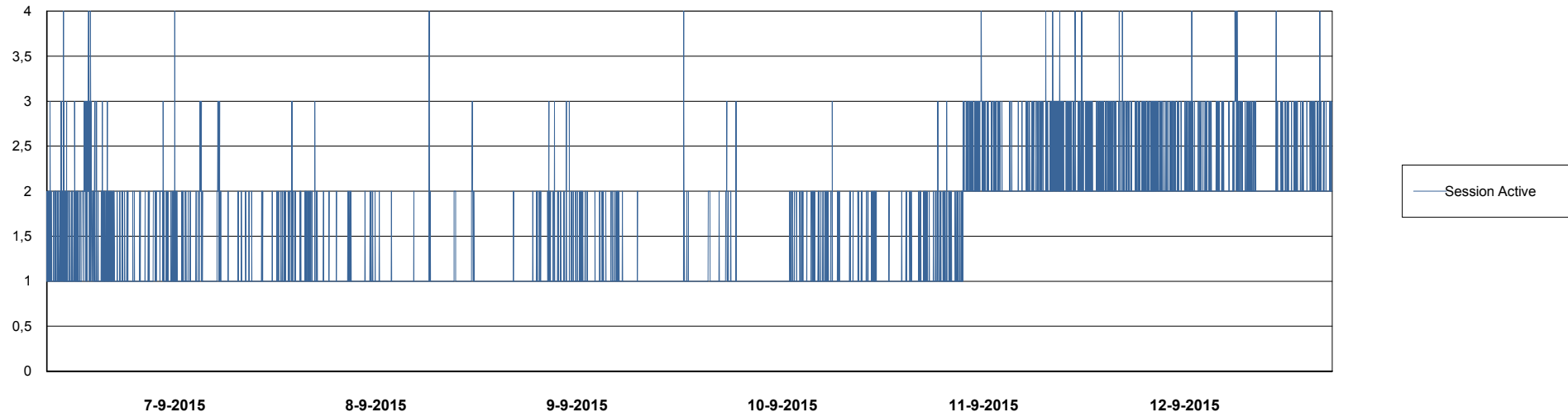
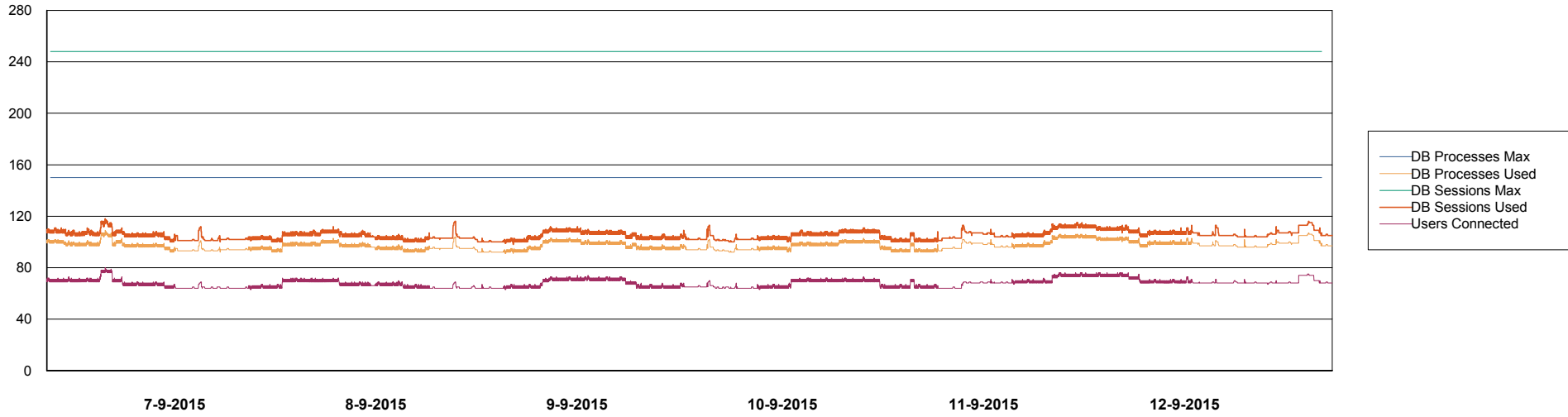
	Total disk space on C (GB)	Free disk space on C (GB)	Total disk space on D (GB)	Free disk space on D (GB)	Total disk space on E (GB)	Free disk space on E (GB)
12-9-2015	555	376	558	547	558	489
11-9-2015	555	376	558	547	558	490
10-9-2015	555	376	558	547	558	491
9-9-2015	555	376	558	547	558	491
8-9-2015	555	377	558	547	558	492
7-9-2015	555	377	558	547	558	493
6-9-2015	555	377	558	547	558	494

Weekly SLA Customer Report

Customer CIW Production
Database ID 45



DATABASE PERFORMANCE CIWDB_Production

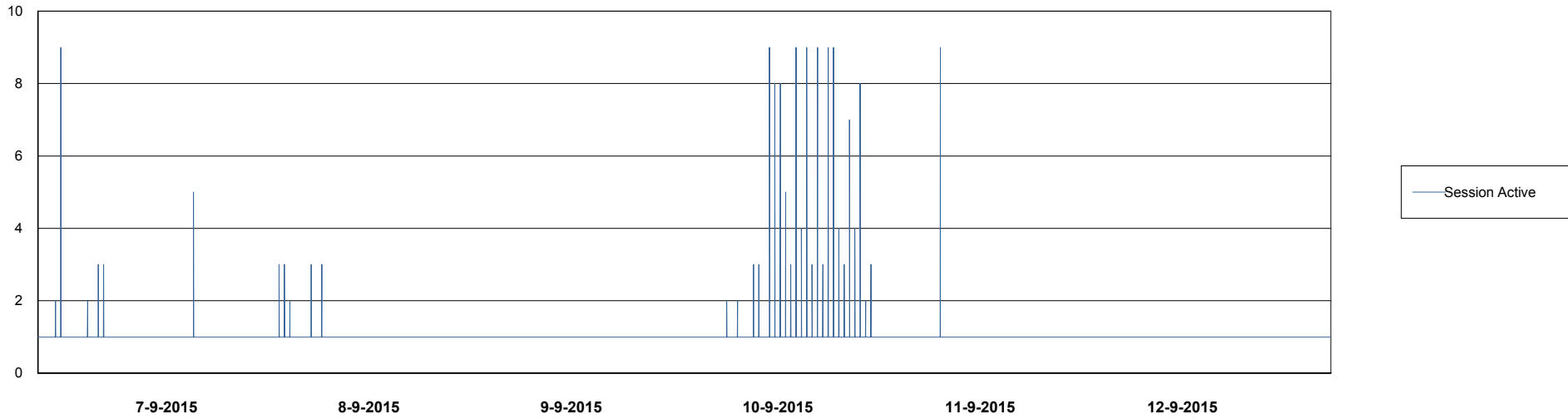
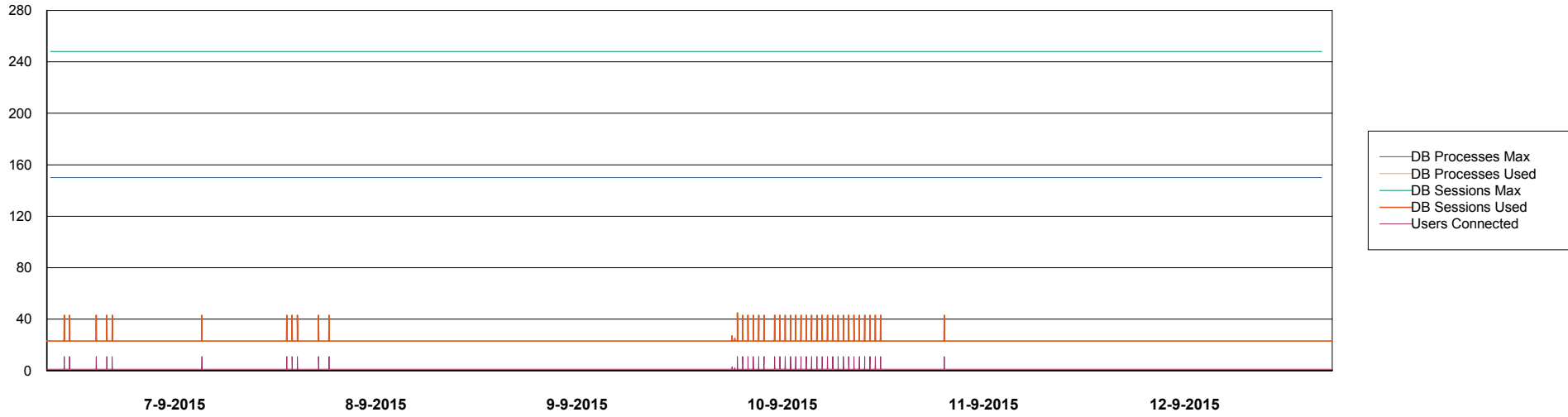


Weekly SLA Customer Report

Customer CIW Production
Database ID 45



DATABASE PERFORMANCE CIWDB_Standby



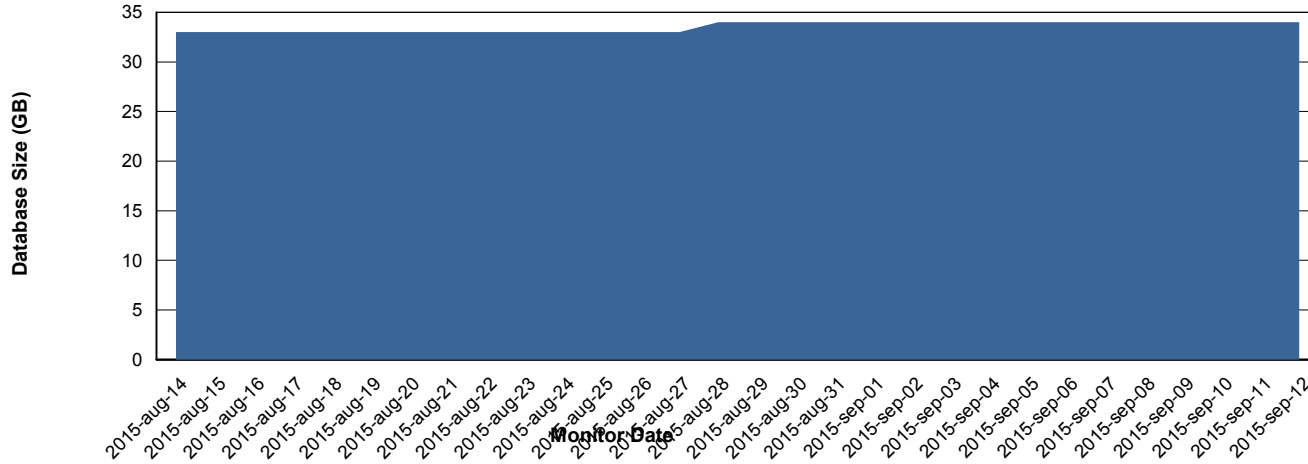
Weekly SLA Customer Report

Customer CIW Production
 Database ID 45



=====
 DATABASE SIZE CIWDB_Production
 =====

Database growth over last month



=====
 DATABASE TABLESPACES CIWDB_Production
 =====

TOTAL DATABASE SIZE PER TABLESPACE

Date	Tablespace Name	Filesize (Gb)	Usedsize (Gb)	Percentage free
12-9-2015	ABSDATA	38	31	18
	INDX	4	3	25
11-9-2015	ABSDATA	38	31	18
	INDX	4	3	25
10-9-2015	ABSDATA	38	31	18
	INDX	4	3	25
9-9-2015	ABSDATA	38	31	18
	INDX	4	3	25
8-9-2015	ABSDATA	38	30	21
	INDX	4	3	25
7-9-2015	ABSDATA	38	30	21
	INDX	4	3	25
6-9-2015	ABSDATA	38	30	21
	INDX	4	3	25

Weekly SLA Customer Report

Customer CIW Production
Database ID 45



=====
STANDBY DATABASE HEALTH CIW Production
=====

Recovery lag for last 7 days

