

Weekly SLA Customer Report

Customer WBL_Production
Database ID 40

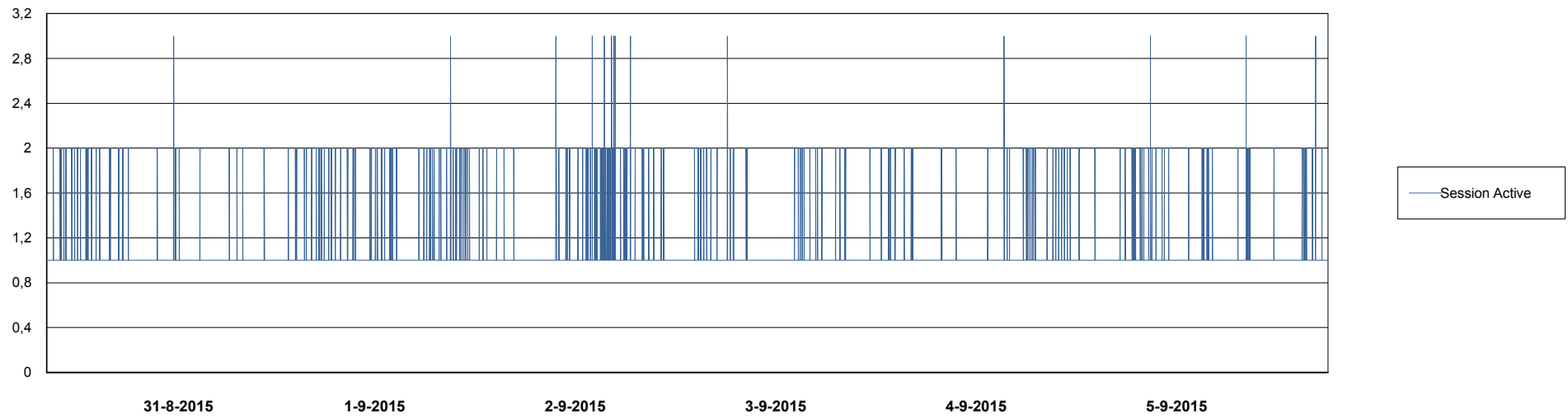
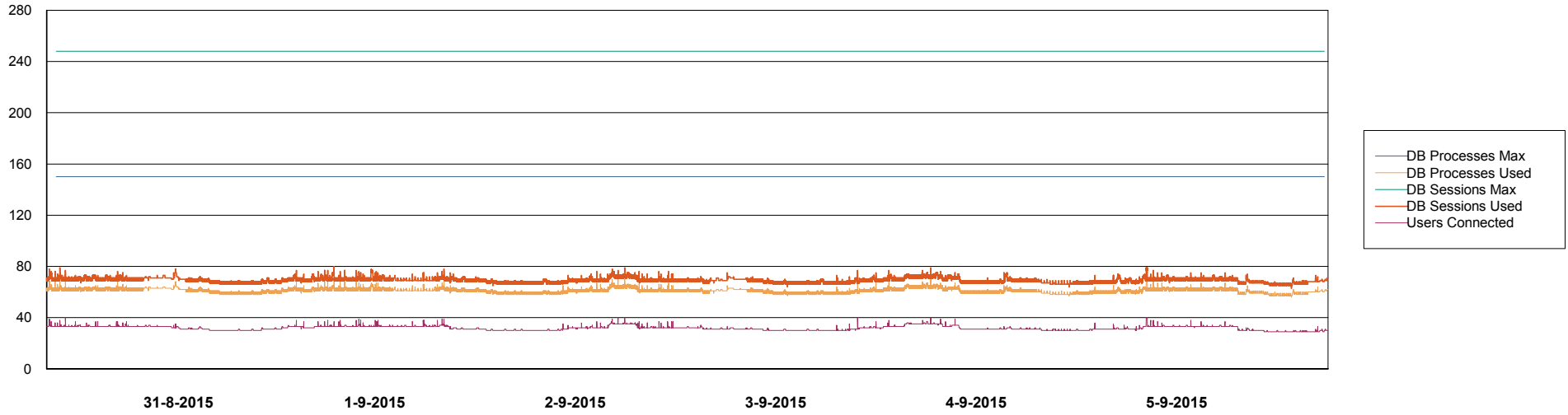


Weekly SLA Customer Report

Customer WBL_Production
Database ID 40



DATABASE PERFORMANCE WBLDB_Production

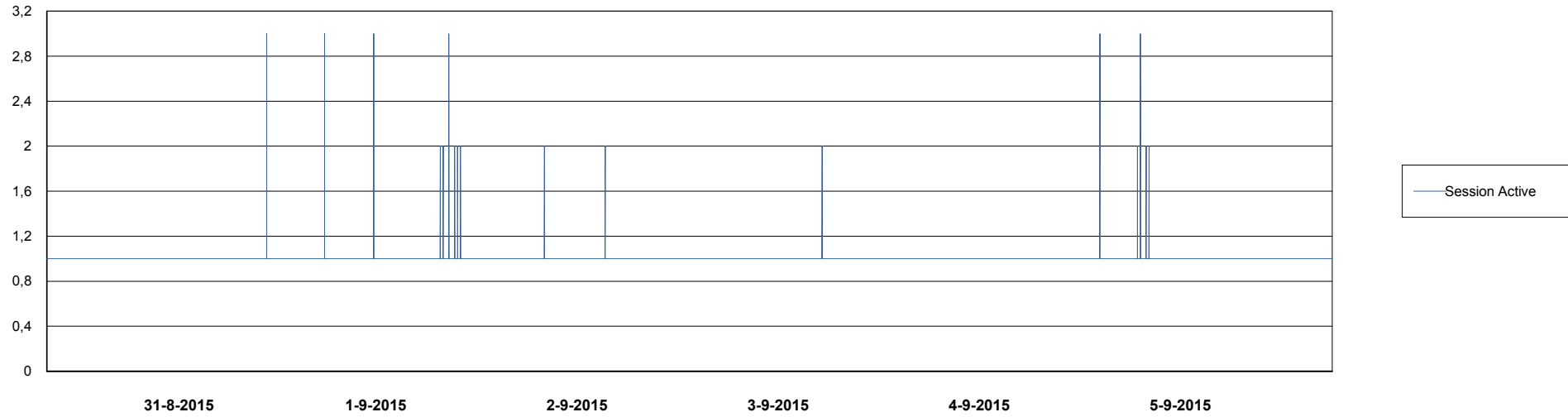
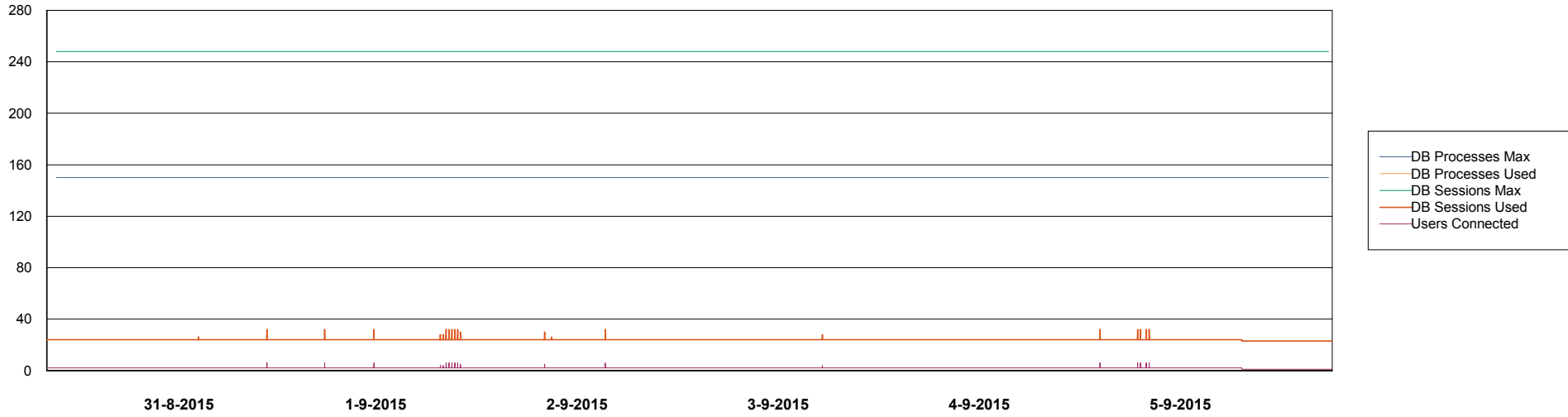


Weekly SLA Customer Report

Customer WBL_Production
Database ID 40



DATABASE PERFORMANCE WBLDB_Standby



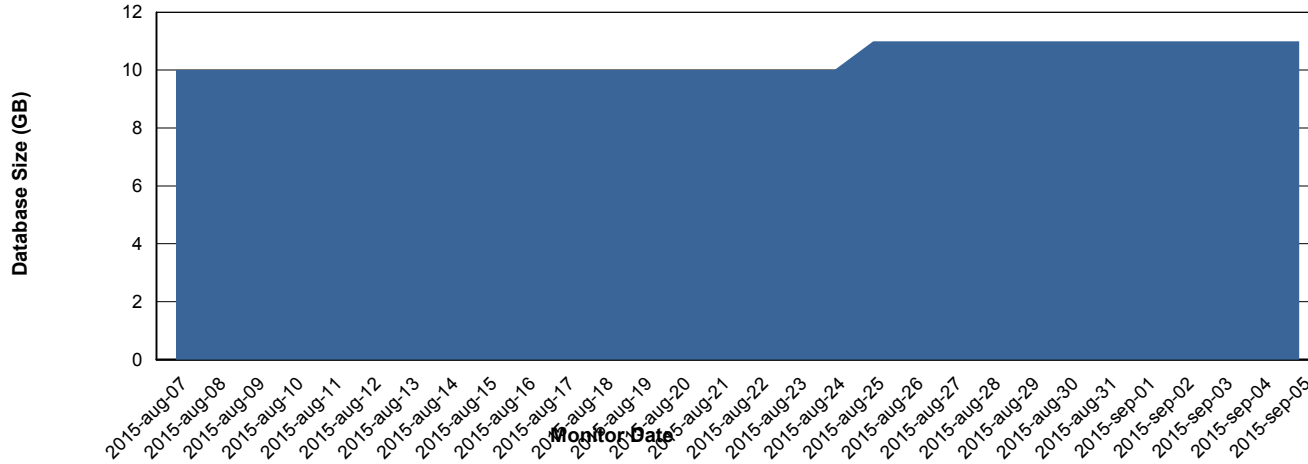
Weekly SLA Customer Report

Customer WBL_Production
 Database ID 40



=====
 DATABASE SIZE WBLDB_Production
 =====

Database growth over last month



=====
 DATABASE TABLESPACES WBLDB_Production
 =====

TOTAL DATABASE SIZE PER TABLESPACE

Date	Tablespace Name	Filesize (Gb)	Usedsize (Gb)	Percentage free
5-9-2015	ABSDATA	6	4	33
	INDX	6	5	17
4-9-2015	ABSDATA	6	4	33
	INDX	6	5	17
3-9-2015	ABSDATA	6	4	33
	INDX	6	5	17
2-9-2015	ABSDATA	6	4	33
	INDX	6	5	17
1-9-2015	ABSDATA	6	4	33
	INDX	6	5	17
31-8-2015	ABSDATA	6	4	33
	INDX	6	5	17
30-8-2015	ABSDATA	6	4	33
	INDX	6	5	17

Weekly SLA Customer Report

Customer WBL_Production
Database ID 40



=====
STANDBY DATABASE HEALTH WBL_Production
=====

Recovery lag for last 7 days

