

## Weekly SLA Customer Report

Customer     SPI\_Production  
 Database ID    49



=====  
 HARDDISK USAGE    SPI\_PRD\_ORACLE1  
 =====

	Total disk space on C (GB)	Free disk space on C (GB)	Total disk space on E (GB)	Free disk space on E (GB)
5-9-2015	40	13	80	31
4-9-2015	40	13	80	31
3-9-2015	40	13	80	31
2-9-2015	40	13	80	31
1-9-2015	40	13	80	31
31-8-2015	40	13	80	31
30-8-2015	40	13	80	31

=====  
 HARDDISK USAGE    SPI\_Webserver  
 =====

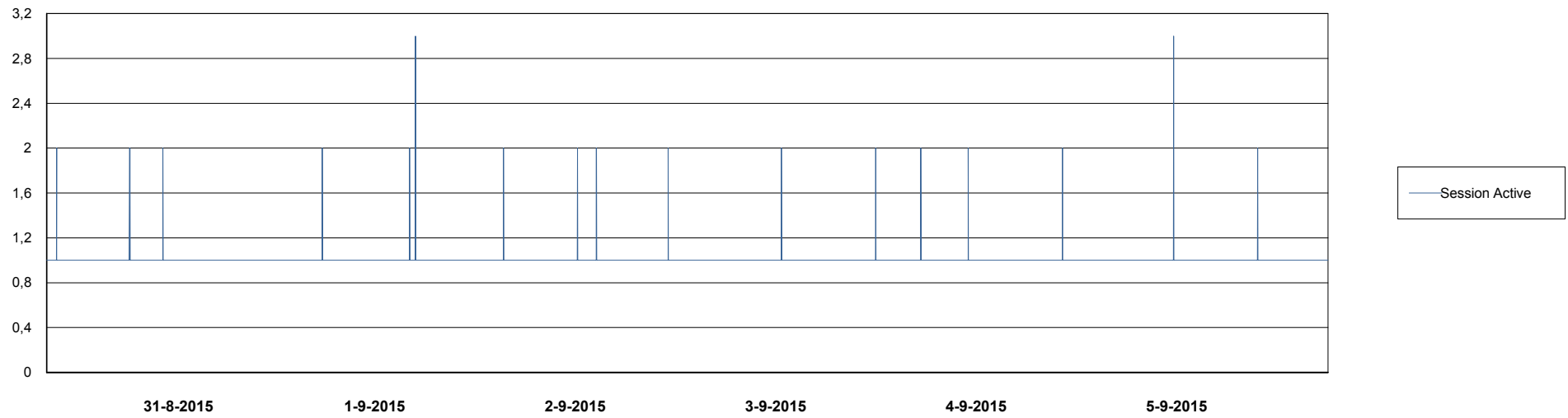
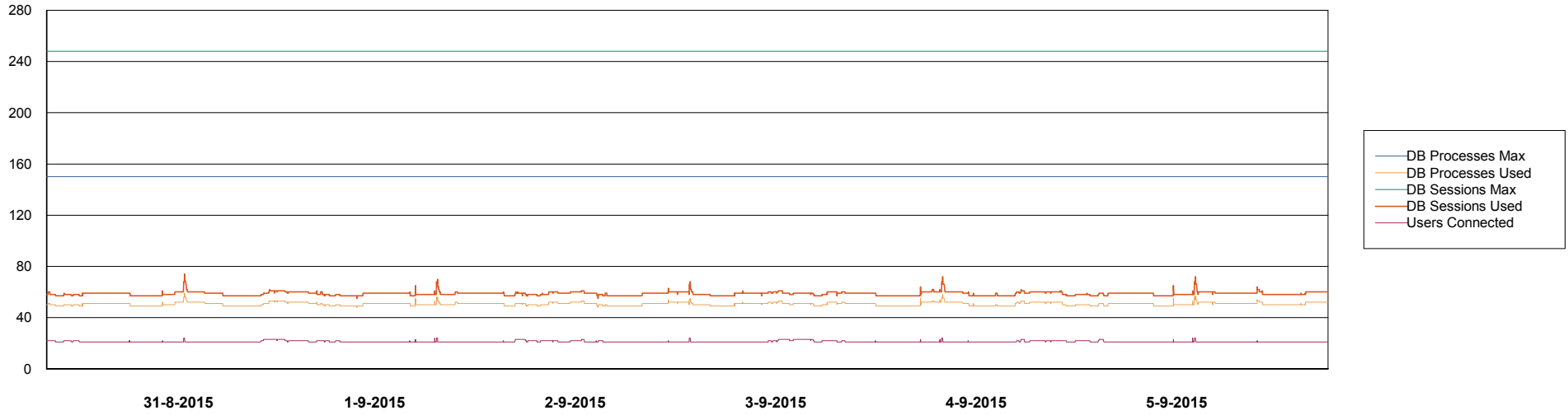
	Total disk space on C (GB)	Free disk space on C (GB)	Total disk space on E (GB)	Free disk space on E (GB)
5-9-2015	50	19	80	14
4-9-2015	50	19	80	14
3-9-2015	50	19	80	14
2-9-2015	50	19	80	14
1-9-2015	50	19	80	15
31-8-2015	50	19	80	15
30-8-2015	50	19	80	15

# Weekly SLA Customer Report

Customer SPI\_Production  
Database ID 49



## DATABASE PERFORMANCE SPIDB\_Production



# Weekly SLA Customer Report

Customer SPI\_Production  
 Database ID 49

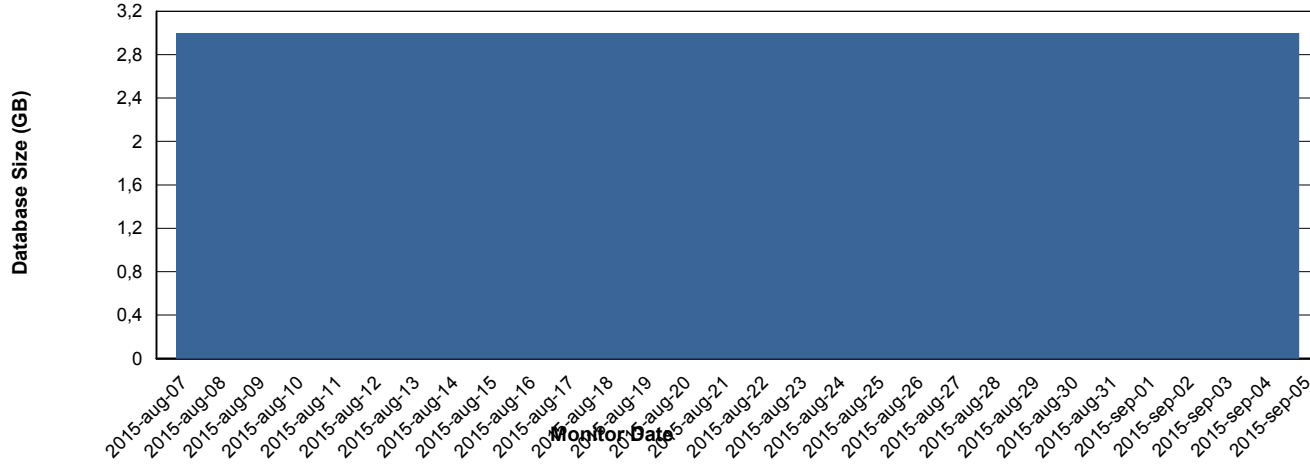


=====

DATABASE SIZE SPIDB\_Production

=====

## Database growth over last month



=====

DATABASE TABLESPACES SPIDB\_Production

=====

### TOTAL DATABASE SIZE PER TABLESPACE

Date	Tablespace Name	Filesize (Gb)	Usedsize (Gb)	Percentage free
5-9-2015	ABSDATA	4	1	75
	INDX	8	0	100
4-9-2015	ABSDATA	4	1	75
	INDX	8	0	100
3-9-2015	ABSDATA	4	1	75
	INDX	8	0	100
2-9-2015	ABSDATA	4	1	75
	INDX	8	0	100
1-9-2015	ABSDATA	4	1	75
	INDX	8	0	100
31-8-2015	ABSDATA	4	1	75
	INDX	8	0	100
30-8-2015	ABSDATA	4	1	75
	INDX	8	0	100

# Weekly SLA Customer Report

---

Customer SPI\_Production  
Database ID 49

