

# Weekly SLA Customer Report

Customer RFL\_Production  
Database ID 36



=====  
HARDDISK USAGE RFL\_PRD\_ORACLE1  
=====

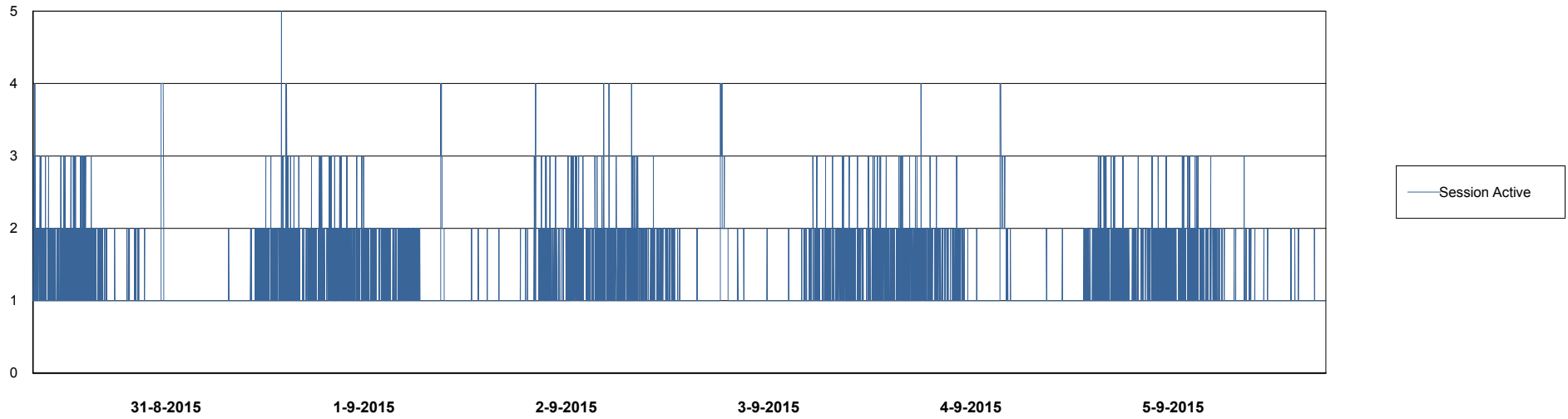
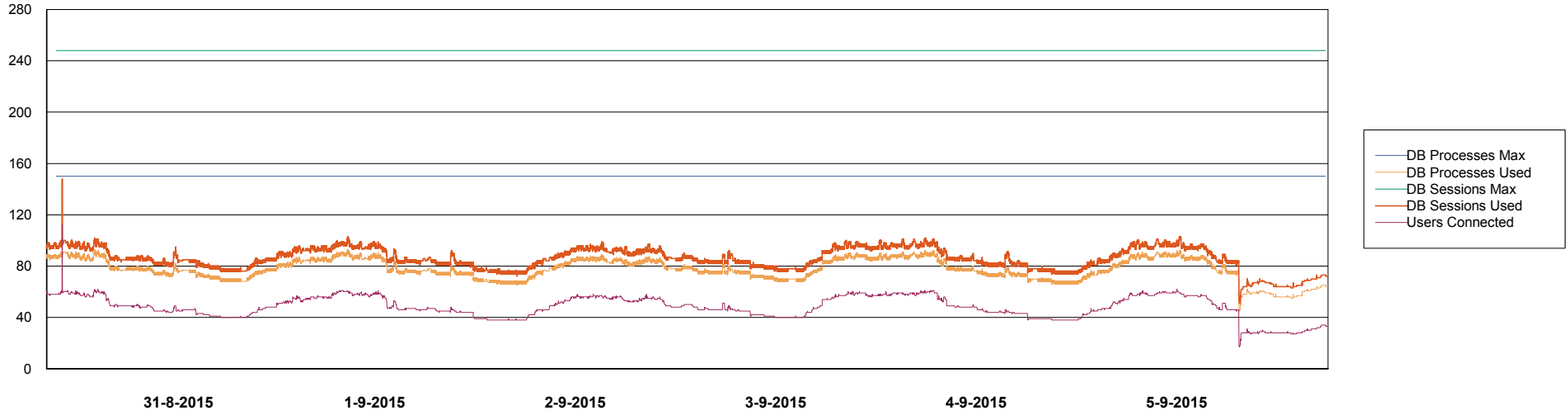
	Total disk space on C (GB)	Free disk space on C (GB)	Total disk space on D (GB)	Free disk space on D (GB)	Total disk space on E (GB)	Free disk space on E (GB)
5-9-2015	279	92	137	93	137	90
4-9-2015	279	91	137	93	137	56
3-9-2015	279	90	137	93	137	21
2-9-2015	279	90	137	93	137	22
1-9-2015	279	90	137	93	137	23
31-8-2015	279	90	137	93	137	24
30-8-2015	279	90	137	93	137	24

# Weekly SLA Customer Report

Customer RFL\_Production  
Database ID 36



## DATABASE PERFORMANCE RFLDB\_Production

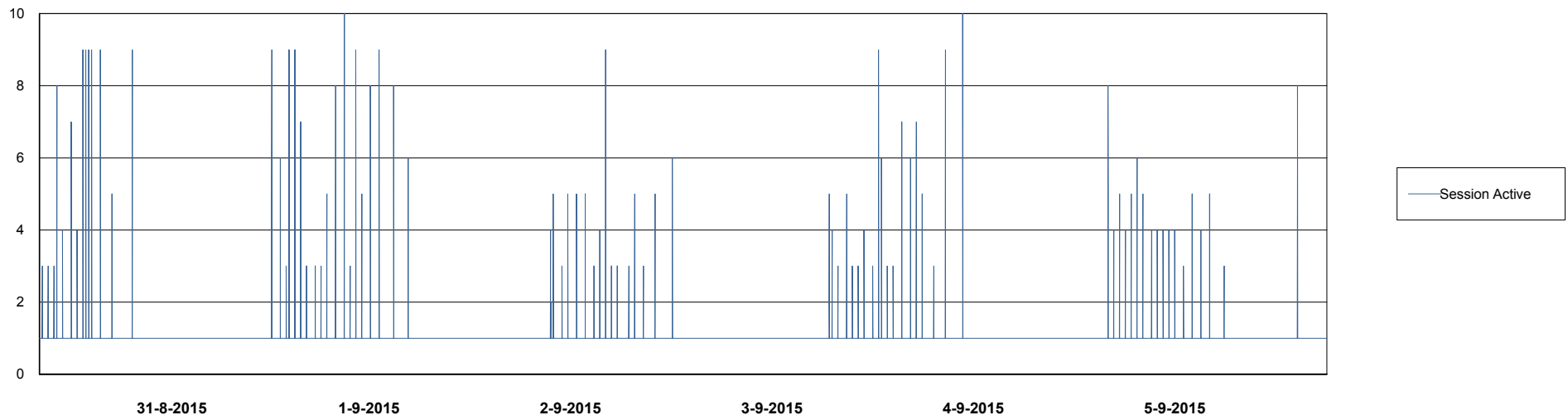
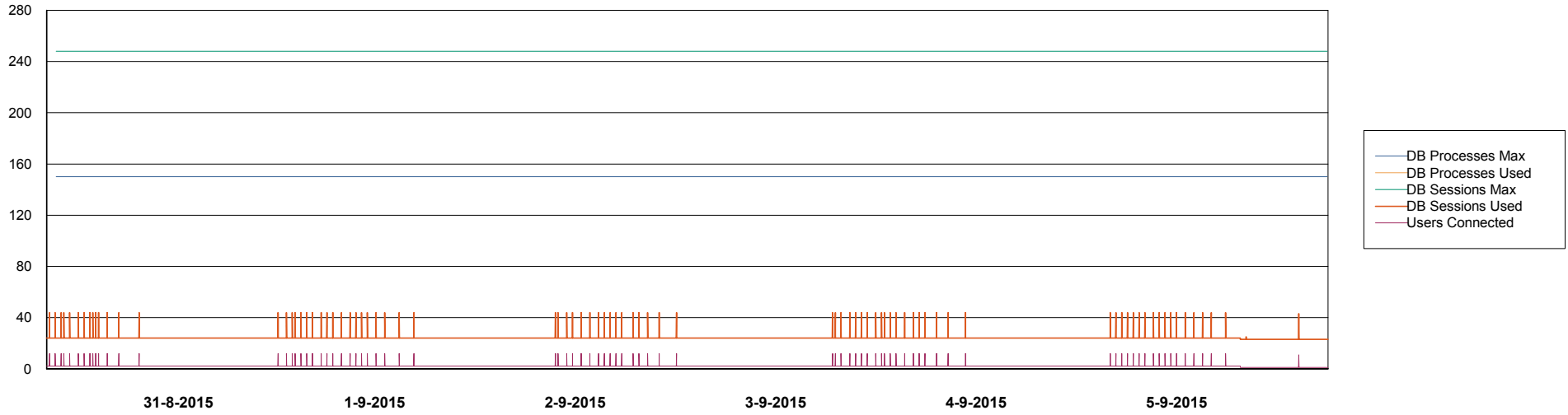


# Weekly SLA Customer Report

Customer RFL\_Production  
Database ID 36



## DATABASE PERFORMANCE RFLDB\_Standby



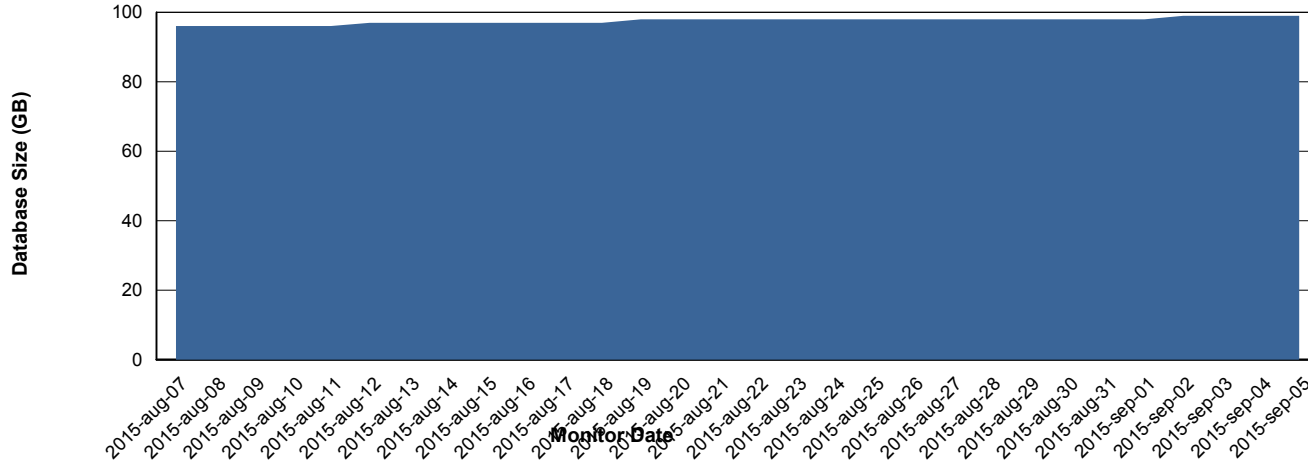
# Weekly SLA Customer Report

Customer RFL\_Production  
 Database ID 36



=====  
 DATABASE SIZE RFLDB\_Production  
 =====

## Database growth over last month



=====  
 DATABASE TABLESPACES RFLDB\_Production  
 =====

### TOTAL DATABASE SIZE PER TABLESPACE

Date	Tablespace Name	Filesize (Gb)	Usedsize (Gb)	Percentage free
5-9-2015	ABSDATA	28	22	21
	INDX	96	75	22
4-9-2015	ABSDATA	28	22	21
	INDX	96	75	22
3-9-2015	ABSDATA	28	22	21
	INDX	96	75	22
2-9-2015	ABSDATA	28	22	21
	INDX	96	75	22
1-9-2015	ABSDATA	28	22	21
	INDX	96	75	22
31-8-2015	ABSDATA	28	22	21
	INDX	96	75	22
30-8-2015	ABSDATA	28	22	21
	INDX	96	75	22

# Weekly SLA Customer Report

Customer RFL\_Production  
Database ID 36



=====  
STANDBY DATABASE HEALTH RFL\_Production  
=====

### Recovery lag for last 7 days

