

Weekly SLA Customer Report

Customer PCO Production
 Database ID 44



=====
 HARDDISK USAGE PCO_PRD_ORACLE1
 =====

	Total disk space on C (GB)	Free disk space on C (GB)	Total disk space on D (GB)	Free disk space on D (GB)
5-9-2015	279	217	838	153
4-9-2015	279	217	838	155
3-9-2015	279	217	838	171
2-9-2015	279	217	838	212
1-9-2015	279	217	838	253
31-8-2015	279	217	838	281
30-8-2015	279	217	838	282

=====
 HARDDISK USAGE PCO_PRD_ORACLE2
 =====

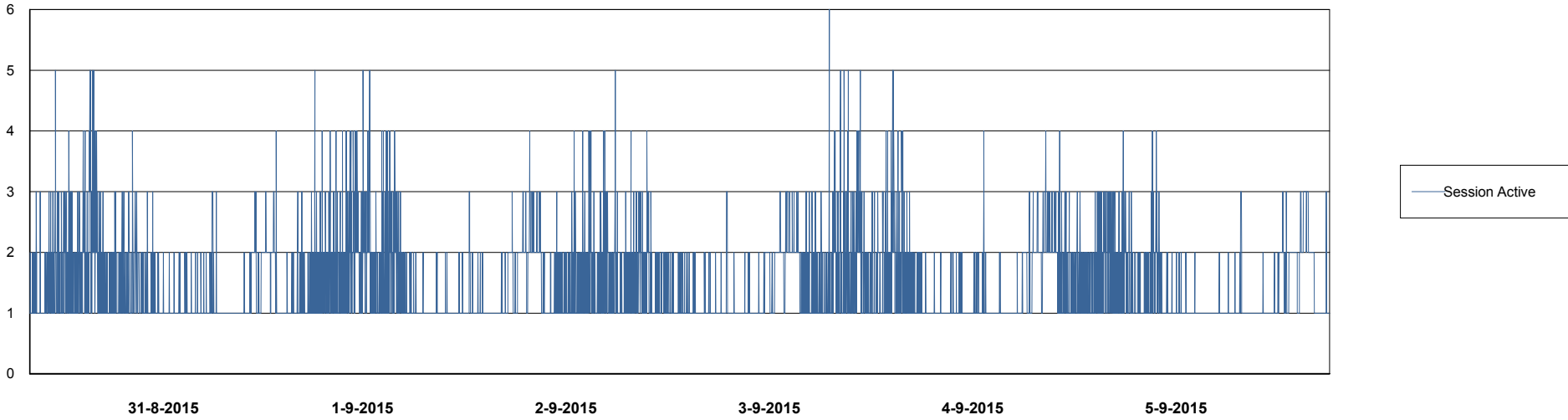
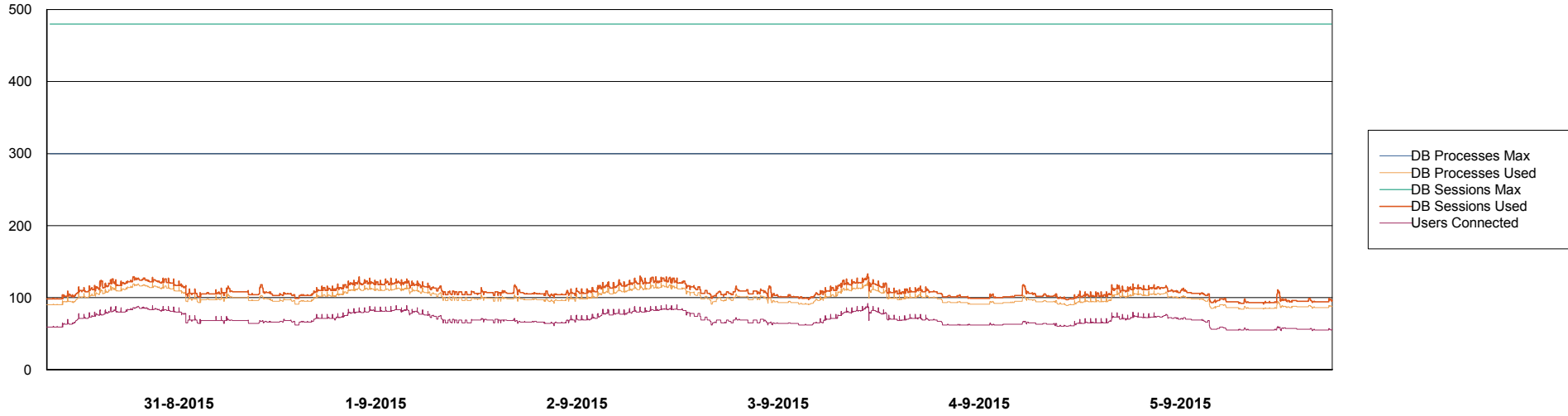
	Total disk space on C (GB)	Free disk space on C (GB)	Total disk space on D (GB)	Free disk space on D (GB)
5-9-2015	279	205	838	505
4-9-2015	279	207	838	507
3-9-2015	279	208	838	510
2-9-2015	279	208	838	513
1-9-2015	279	209	838	515
31-8-2015	279	210	838	518
30-8-2015	279	211	838	519

Weekly SLA Customer Report

Customer PCO Production
Database ID 44



=====
DATABASE PERFORMANCE PCODB_Production =====
=====

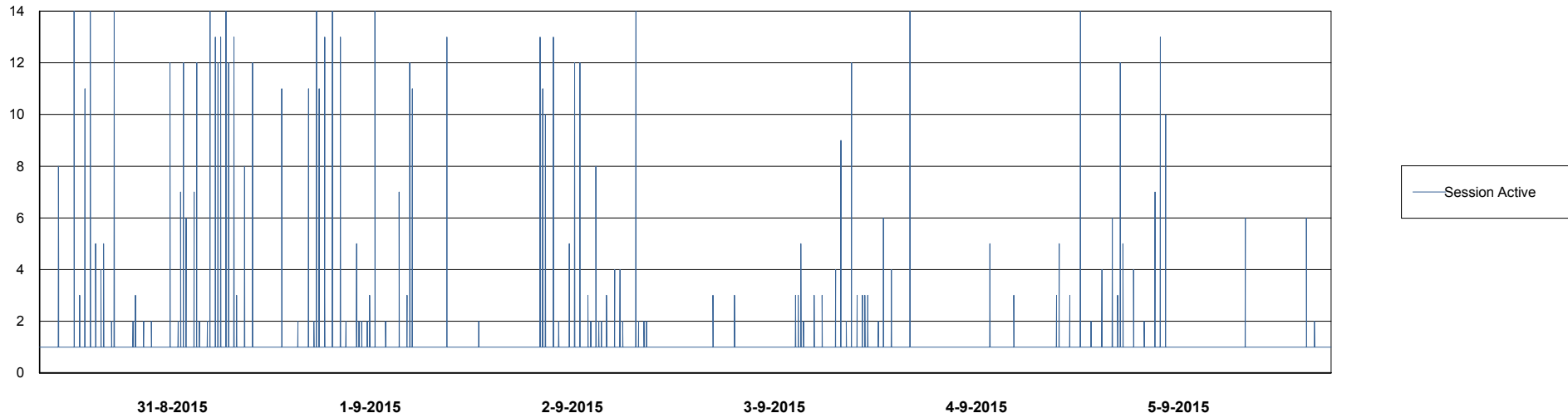
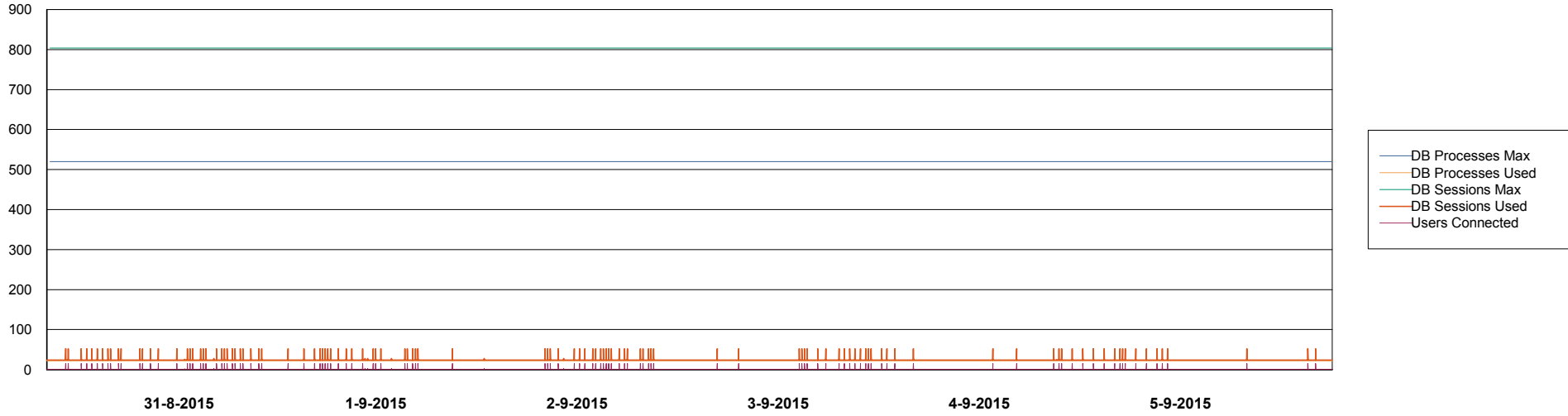


Weekly SLA Customer Report

Customer PCO Production
Database ID 44



DATABASE PERFORMANCE PCODB_Standby



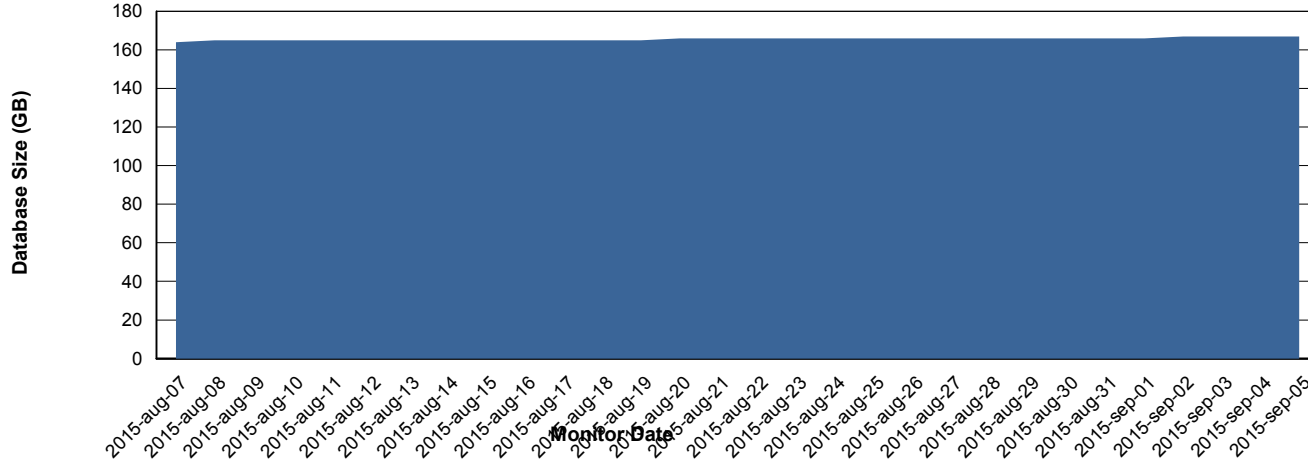
Weekly SLA Customer Report

Customer PCO Production
 Database ID 44



=====
 DATABASE SIZE PCODB_Production
 =====

Database growth over last month



=====
 DATABASE TABLESPACES PCODB_Production
 =====

TOTAL DATABASE SIZE PER TABLESPACE

Date	Tablespace Name	Filesize (Gb)	Usedsize (Gb)	Percentage free
5-9-2015	ABSDATA	79	65	18
	INDX	118	100	15
4-9-2015	ABSDATA	79	65	18
	INDX	118	100	15
3-9-2015	ABSDATA	79	65	18
	INDX	118	100	15
2-9-2015	ABSDATA	79	65	18
	INDX	118	100	15
1-9-2015	ABSDATA	79	65	18
	INDX	118	100	15
31-8-2015	ABSDATA	79	65	18
	INDX	118	100	15
30-8-2015	ABSDATA	79	65	18
	INDX	118	100	15

Weekly SLA Customer Report

Customer PCO Production
Database ID 44



=====
STANDBY DATABASE HEALTH PCO Production
=====

Recovery lag for last 7 days

