

# Weekly SLA Customer Report

Customer NIX\_Production  
 Database ID 51



=====  
 HARDDISK USAGE NIX\_PRD\_ABSAPP1  
 =====

	Total disk space on C (GB)	Free disk space on C (GB)
5-9-2015	200	178
4-9-2015	200	178
3-9-2015	200	178
2-9-2015	200	178
1-9-2015	200	178
31-8-2015	200	178
30-8-2015	200	178

=====  
 HARDDISK USAGE NIX\_PRD\_ABSAPP2  
 =====

	Total disk space on C (GB)	Free disk space on C (GB)
5-9-2015	200	178
4-9-2015	200	178
3-9-2015	200	178
2-9-2015	200	178
1-9-2015	200	178
31-8-2015	200	178
30-8-2015	200	178

## Weekly SLA Customer Report

Customer      NIX\_Production  
 Database ID    51



=====  
 HARDDISK USAGE    NIX\_PRD\_ABSWEB01  
 =====

	Total disk space on C (GB)	Free disk space on C (GB)
5-9-2015	300	281
4-9-2015	300	281
3-9-2015	300	281
2-9-2015	300	281
1-9-2015	300	282
31-8-2015	300	283
30-8-2015	300	283

=====  
 HARDDISK USAGE    NIX\_PRD\_ORACLE\_B11  
 =====

	Total disk space on C (GB)	Free disk space on C (GB)	Total disk space on E (GB)	Free disk space on E (GB)	Total disk space on F (GB)	Free disk space on F (GB)	Total disk space on G (GB)	Free disk space on G (GB)
5-9-2015	279	204	558	388	558	458	279	236
4-9-2015	279	204	558	388	558	458	279	236
3-9-2015	279	204	558	389	558	458	279	237
2-9-2015	279	204	558	389	558	458	279	237
1-9-2015	279	204	558	392	558	458	279	237
31-8-2015	279	204	558	392	558	458	279	237
30-8-2015	279	204	558	392	558	458	279	237

## Weekly SLA Customer Report

Customer      NIX\_Production  
 Database ID    51



=====  
 HARDDISK USAGE    NIX\_PRD\_ORCDB1  
 =====

	Total disk space on C (GB)	Free disk space on C (GB)	Total disk space on E (GB)	Free disk space on E (GB)	Total disk space on F (GB)	Free disk space on F (GB)	Total disk space on G (GB)	Free disk space on G (GB)
5-9-2015	279	125	558	495	558	457	279	96
4-9-2015	279	125	558	495	558	457	279	98
3-9-2015	279	125	558	495	558	457	279	100
2-9-2015	279	125	558	495	558	457	279	102
1-9-2015	279	137	558	495	558	457	279	105
31-8-2015	279	153	558	495	558	457	279	109
30-8-2015	279	153	558	495	558	457	279	110

=====  
 HARDDISK USAGE    NIX\_PRD\_ORCDB2  
 =====

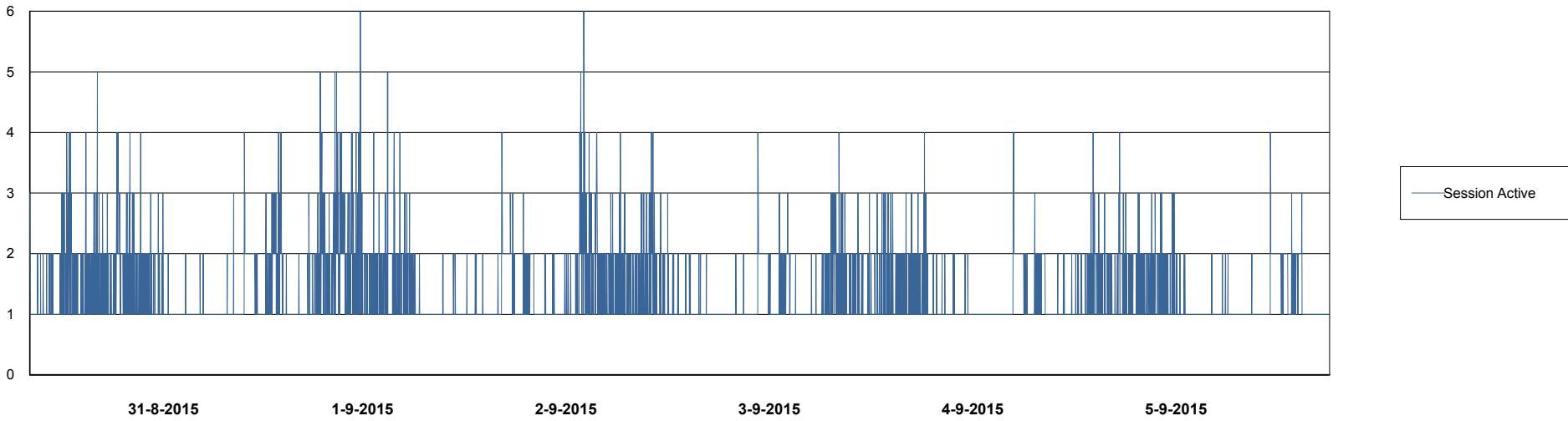
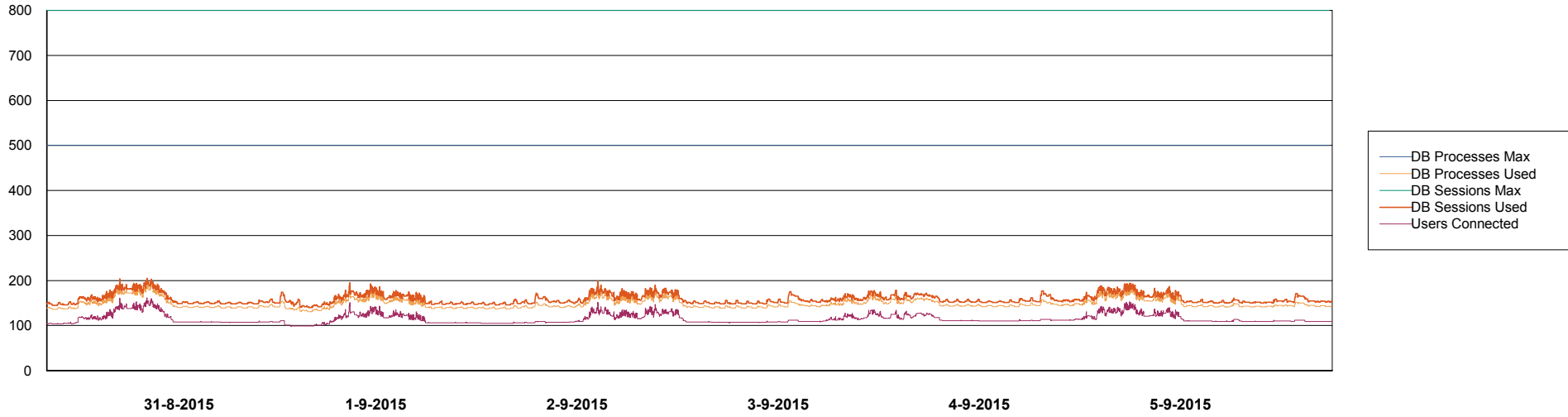
	Total disk space on C (GB)	Free disk space on C (GB)	Total disk space on E (GB)	Free disk space on E (GB)	Total disk space on F (GB)	Free disk space on F (GB)	Total disk space on G (GB)	Free disk space on G (GB)
5-9-2015	279	237	558	403	558	457	279	130
4-9-2015	279	237	558	403	558	457	279	132
3-9-2015	279	237	558	403	558	457	279	134
2-9-2015	279	237	558	403	558	457	279	137
1-9-2015	279	237	558	403	558	457	279	140
31-8-2015	279	237	558	403	558	457	279	143
30-8-2015	279	237	558	403	558	457	279	145

# Weekly SLA Customer Report

Customer NIX\_Production  
Database ID 51



DATABASE PERFORMANCE NIXDB\_Production



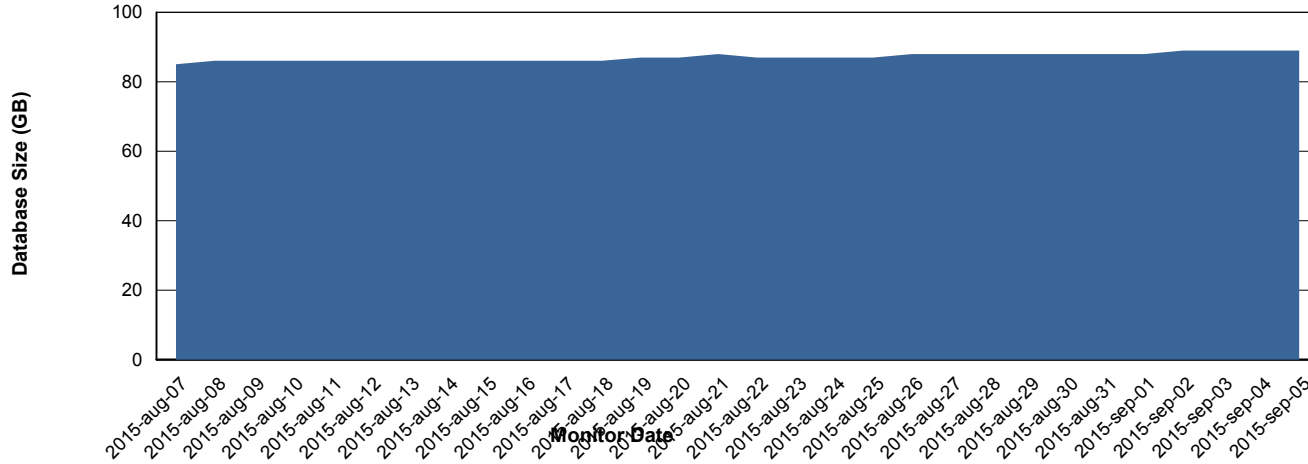
# Weekly SLA Customer Report

Customer NIX\_Production  
 Database ID 51



=====  
 DATABASE SIZE NIXDB\_Production  
 =====

## Database growth over last month



=====  
 DATABASE TABLESPACES NIXDB\_Production  
 =====

### TOTAL DATABASE SIZE PER TABLESPACE

Date	Tablespace Name	Filesize (Gb)	Usedsize (Gb)	Percentage free
5-9-2015	ABSDATA	50	34	32
	INDX	100	53	47
4-9-2015	ABSDATA	50	34	32
	INDX	100	53	47
3-9-2015	ABSDATA	50	34	32
	INDX	100	53	47
2-9-2015	ABSDATA	50	34	32
	INDX	100	53	47
1-9-2015	ABSDATA	50	34	32
	INDX	100	53	47
31-8-2015	ABSDATA	50	34	32
	INDX	100	52	48
30-8-2015	ABSDATA	50	34	32
	INDX	100	52	48

# Weekly SLA Customer Report

---

Customer NIX\_Production  
Database ID 51



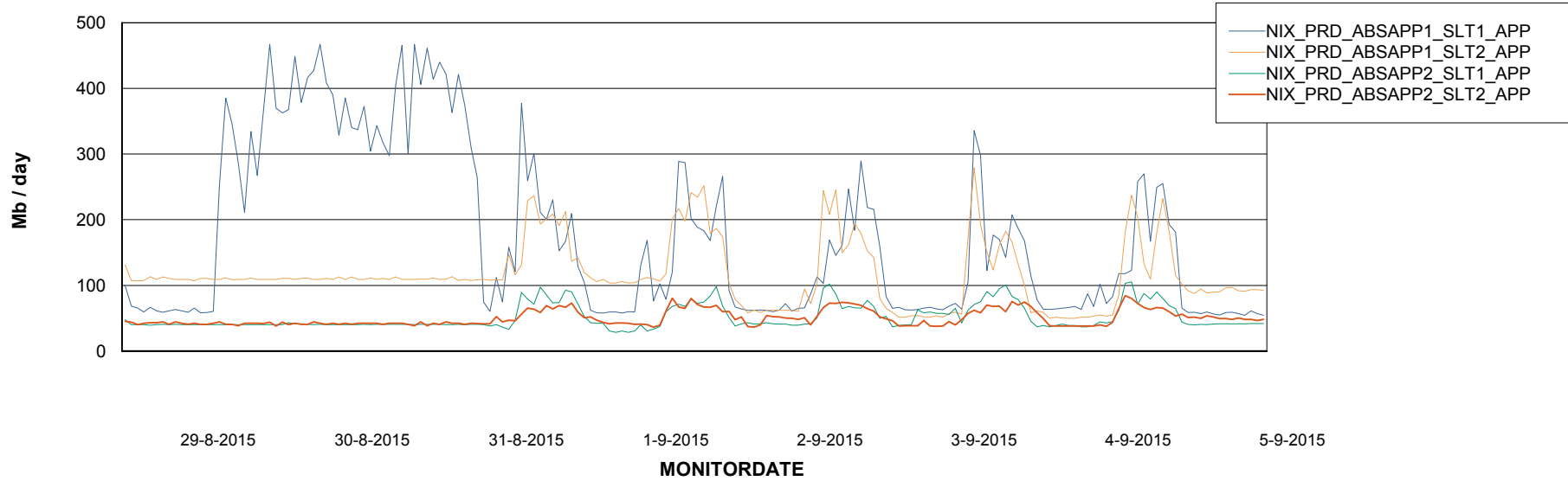
# Weekly SLA Customer Report

Customer NIX\_Production  
Database ID 51



=====  
ABSolute Application Server Services  
=====

### Avg memory used per ABS Server Service



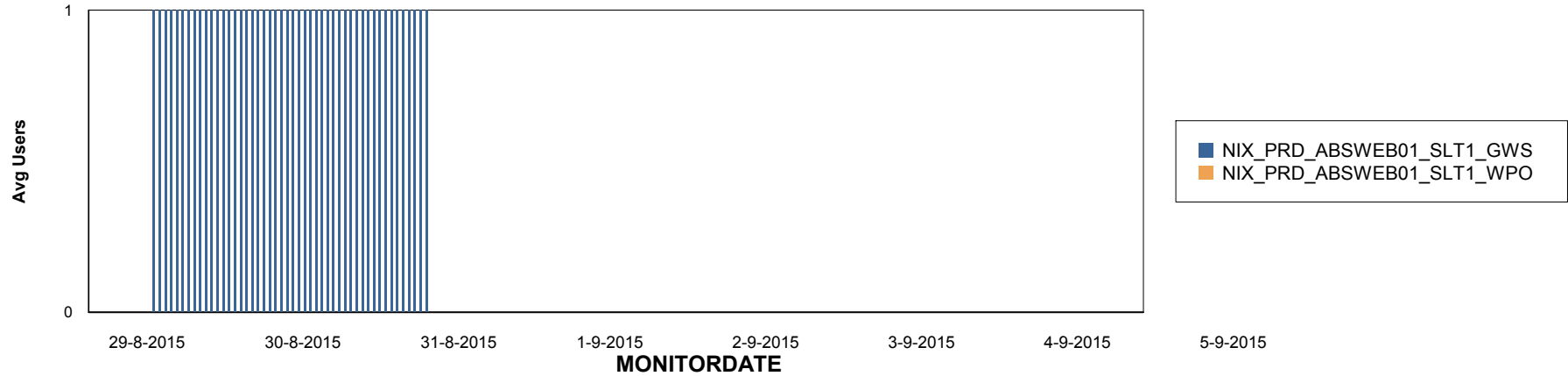
# Weekly SLA Customer Report

Customer NIX\_Production  
Database ID 51

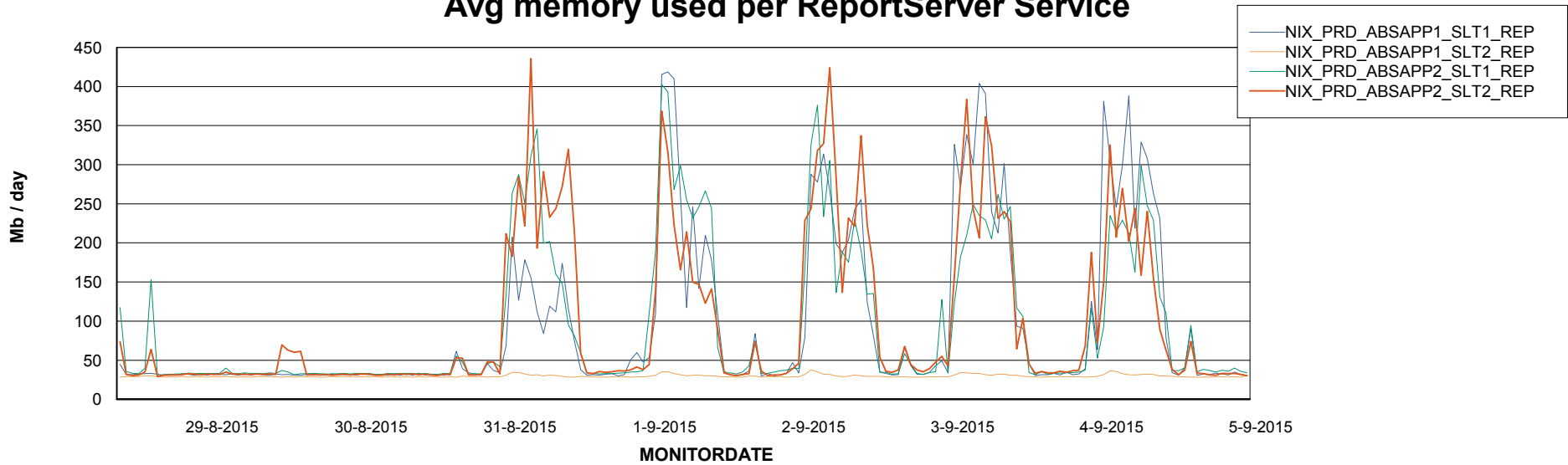


=====  
ABSolute Application ReportServer Services  
=====

## Disaster per ReportServer



## Avg memory used per ReportServer Service



# Weekly SLA Customer Report

Customer NIX\_Production  
Database ID 51



## Disaster per ABS component

