

Weekly SLA Customer Report

Customer JWR Production
 Database ID 43



=====
 HARDDISK USAGE JWR_PRD_JWR-ABS-01
 =====

	Used disk space on / (GB)	Total disk space on / (GB)	Free disk space on / (GB)
5-9-2015	29	49	18
4-9-2015	29	49	18
3-9-2015	29	49	18
2-9-2015	29	49	18
1-9-2015	29	49	18
31-8-2015	29	49	18
30-8-2015	29	49	18

=====
 HARDDISK USAGE JWR_PRD_JWR-ABS-02
 =====

	Used disk space on / (GB)	Total disk space on / (GB)	Free disk space on / (GB)
5-9-2015	32	49	15
4-9-2015	32	49	15
3-9-2015	32	49	15
2-9-2015	32	49	15
1-9-2015	32	49	15
31-8-2015	32	49	15
30-8-2015	32	49	15

Weekly SLA Customer Report

Customer JWR Production
 Database ID 43



=====

HARDDISK USAGE JWR_PRD_JWR-ODB-01

=====

	Used disk space on / (GB)	Total disk space on / (GB)	Free disk space on / (GB)
5-9-2015	97	148	44
4-9-2015	97	148	43
3-9-2015	98	148	43
2-9-2015	98	148	43
1-9-2015	98	148	43
31-8-2015	101	148	40
30-8-2015	100	148	40

=====

HARDDISK USAGE JWR_PRD_JWR-ODB-02

=====

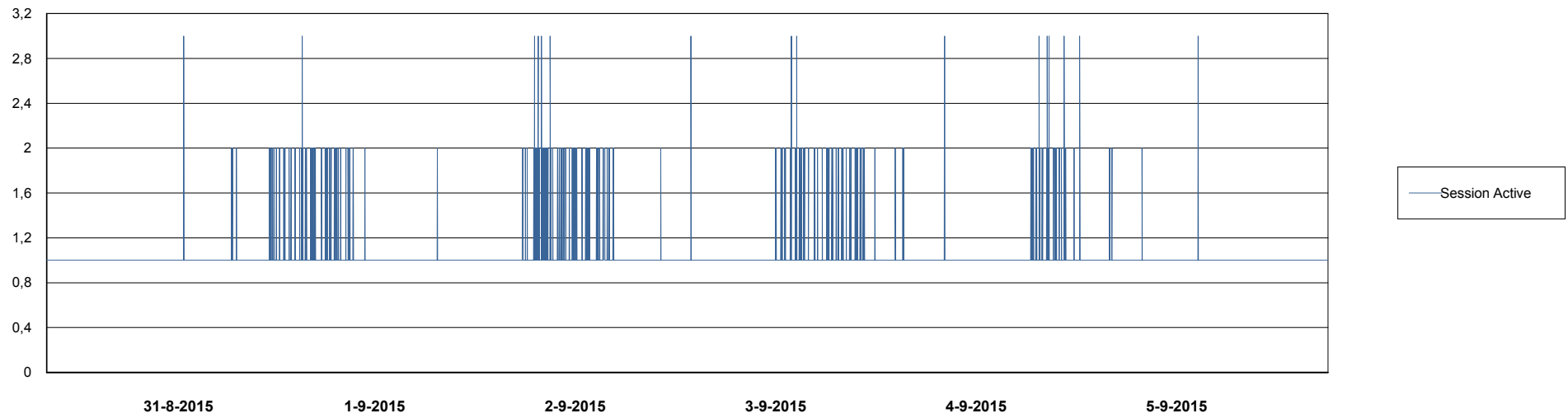
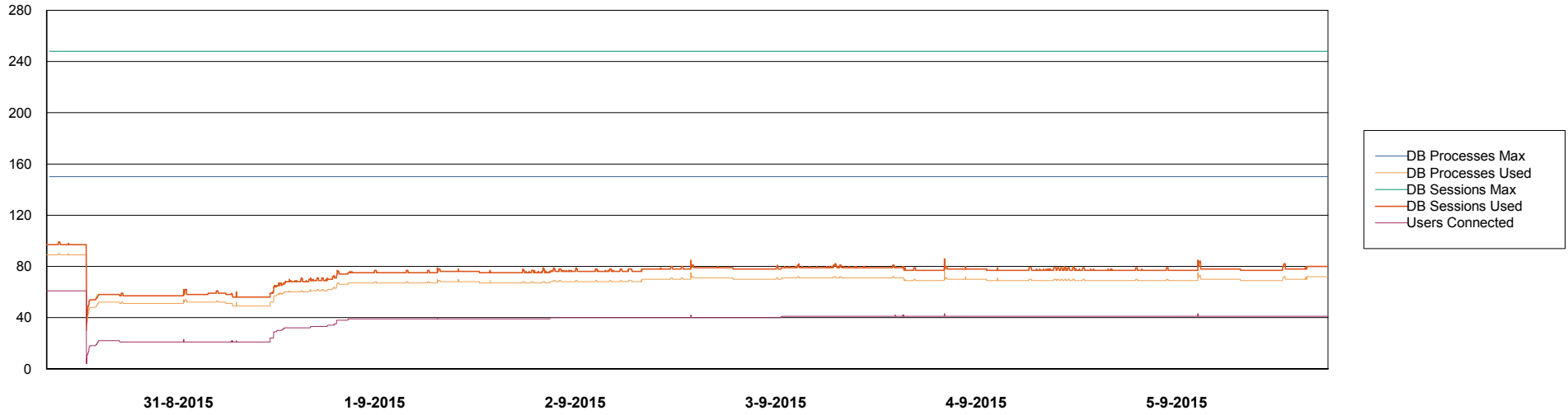
	Used disk space on / (GB)	Total disk space on / (GB)	Free disk space on / (GB)
5-9-2015	95	138	36
4-9-2015	95	138	36
3-9-2015	95	138	36
2-9-2015	95	138	35
1-9-2015	96	138	35
31-8-2015	96	138	35
30-8-2015	96	138	35

Weekly SLA Customer Report

Customer JWR Production
Database ID 43



DATABASE PERFORMANCE JWRDB_Production



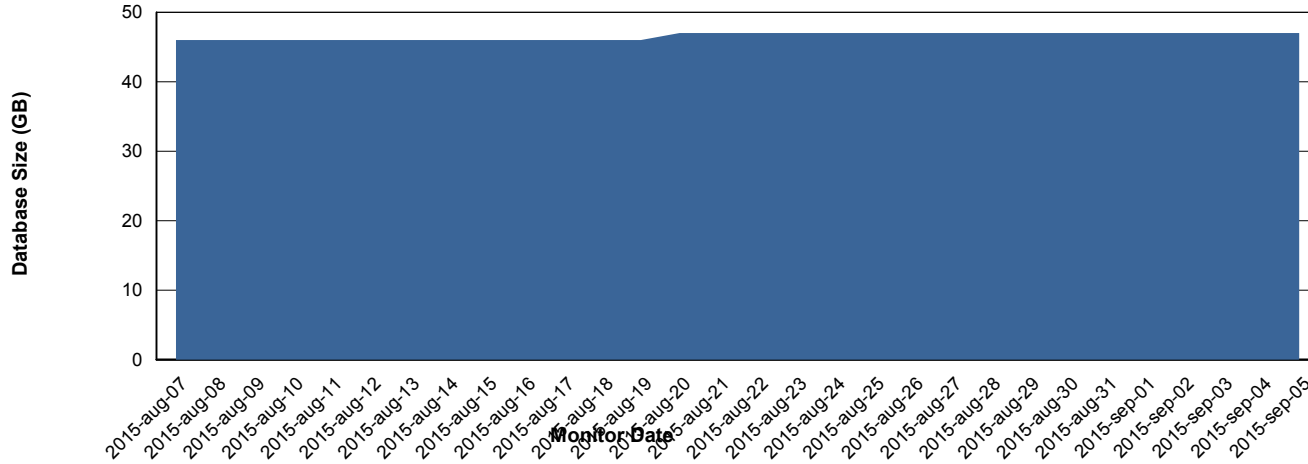
Weekly SLA Customer Report

Customer JWR Production
 Database ID 43



=====
 DATABASE SIZE JWRDB_Production
 =====

Database growth over last month



=====
 DATABASE TABLESPACES JWRDB_Production
 =====

TOTAL DATABASE SIZE PER TABLESPACE

Date	Tablespace Name	Filesize (Gb)	Usedsize (Gb)	Percentage free
5-9-2015	ABSDATA	18	13	28
	INDX	40	33	18
4-9-2015	ABSDATA	18	13	28
	INDX	40	33	18
3-9-2015	ABSDATA	18	13	28
	INDX	40	33	18
2-9-2015	ABSDATA	18	13	28
	INDX	40	33	18
1-9-2015	ABSDATA	18	13	28
	INDX	40	33	18
31-8-2015	ABSDATA	18	13	28
	INDX	40	33	18
30-8-2015	ABSDATA	18	13	28
	INDX	40	33	18

Weekly SLA Customer Report

Customer JWR Production
Database ID 43



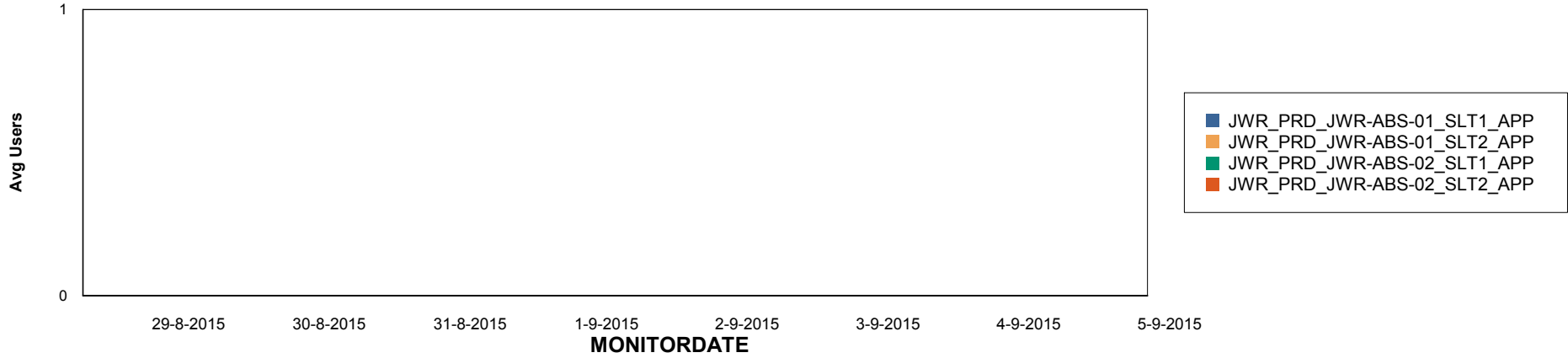
Weekly SLA Customer Report

Customer JWR Production
Database ID 43

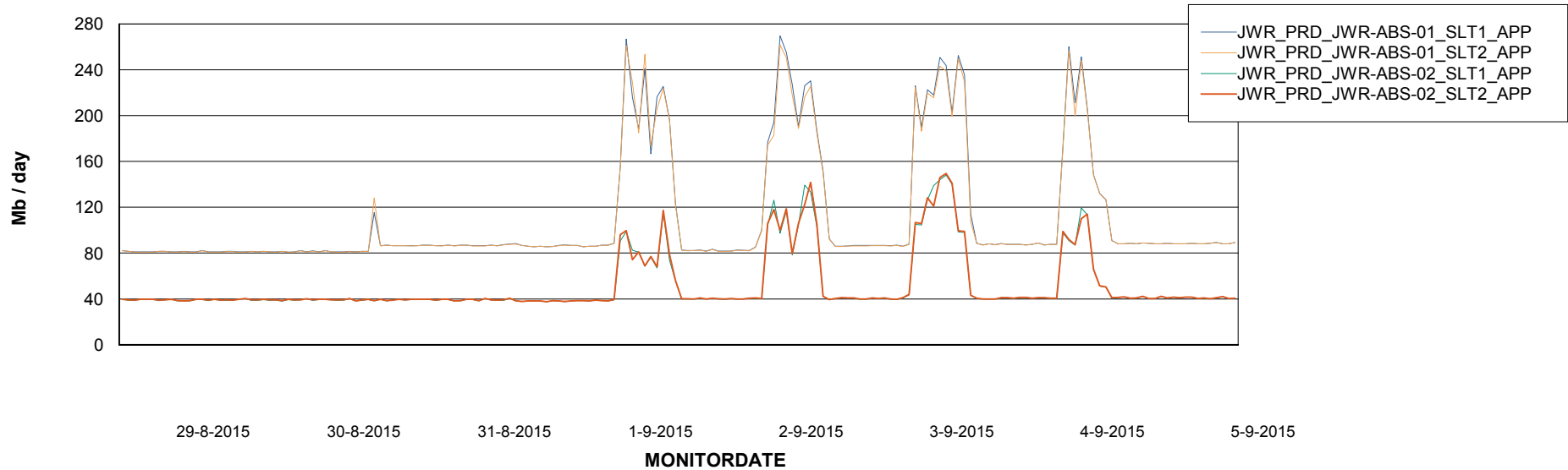


ABSSolute Application Server Services

Disaster per ABS Server



Avg memory used per ABS Server Service



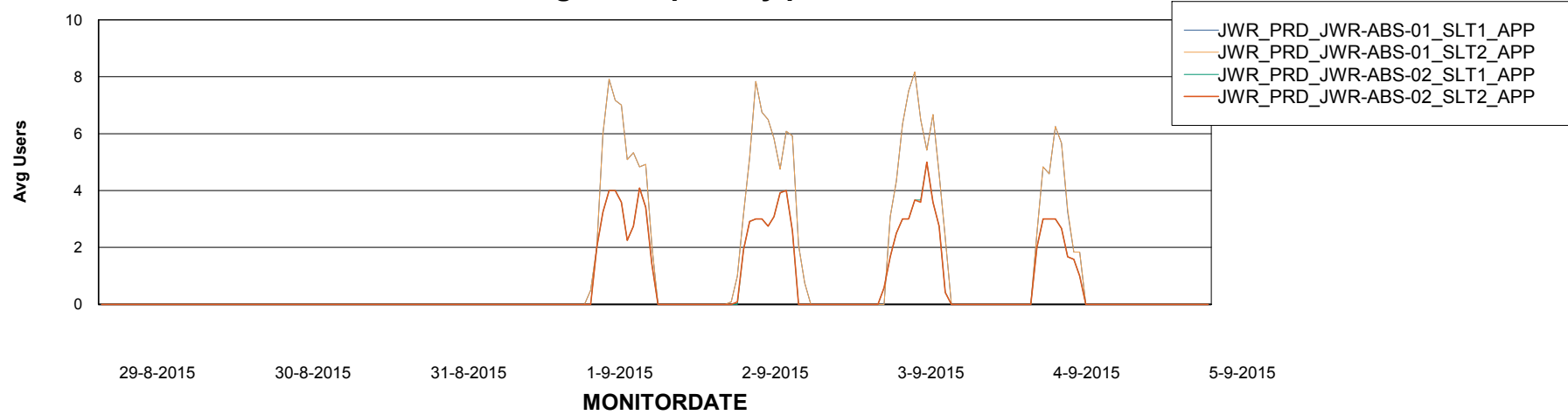
Weekly SLA Customer Report

Customer JWR Production
Database ID 43



=====
ABSolute Application Server Services
=====

Avg users per day per ABS server



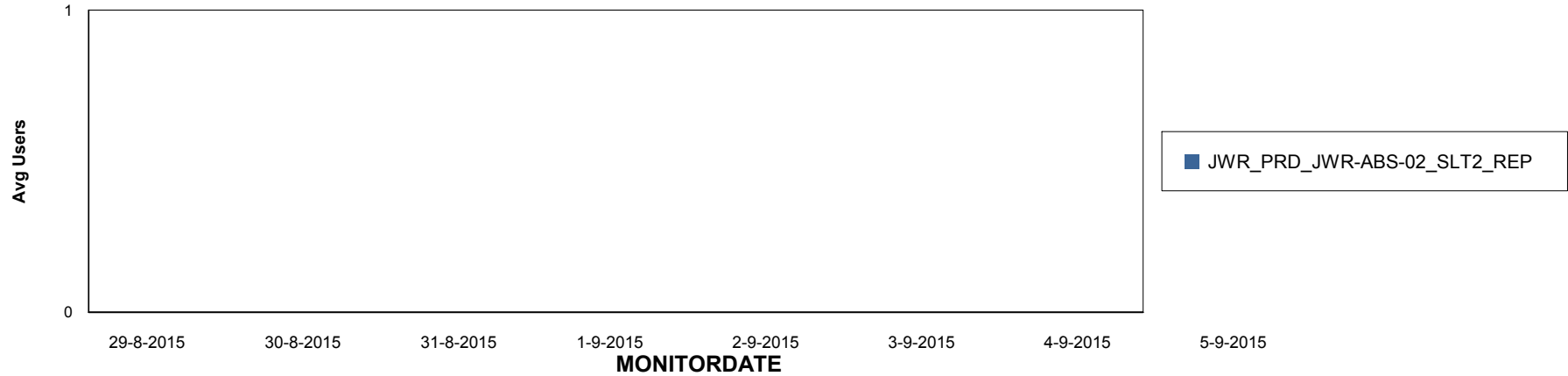
Weekly SLA Customer Report

Customer JWR Production
Database ID 43

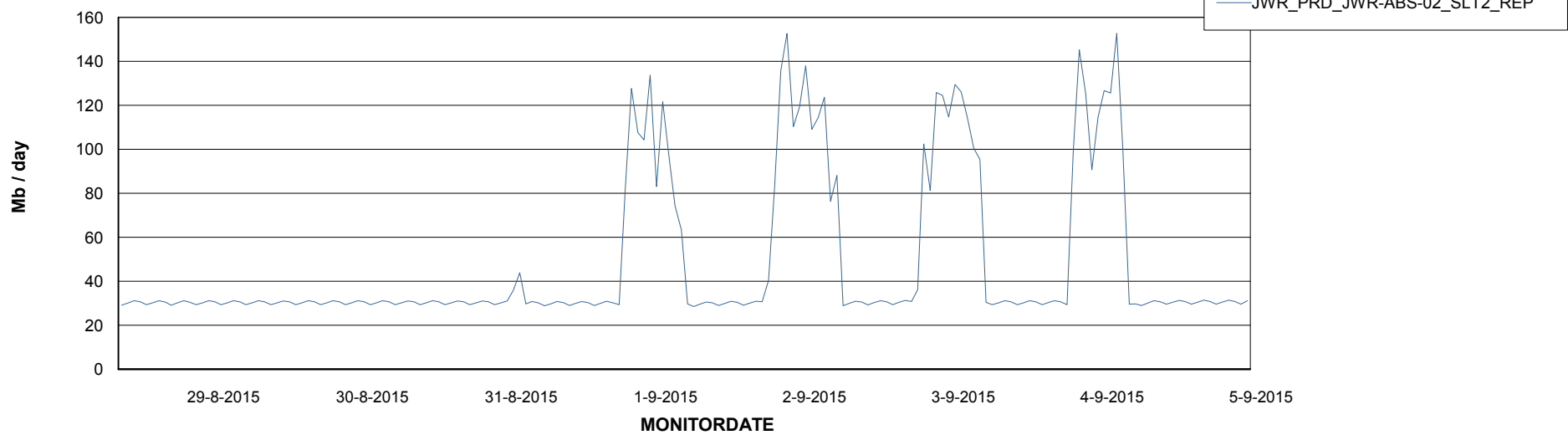


=====
ABSolute Application ReportServer Services
=====

Disaster per ReportServer



Avg memory used per ReportServer Service



Weekly SLA Customer Report

Customer JWR Production
Database ID 43



Disaster per ABS component

