

Weekly SLA Customer Report

Customer CIW Production
 Database ID 45



=====
 HARDDISK USAGE CIW_PRD_ORACLE1
 =====

| | Total disk space on C (GB) | Free disk space on C (GB) | Total disk space on D (GB) | Free disk space on D (GB) | Total disk space on E (GB) | Free disk space on E (GB) |
|-----------|----------------------------|---------------------------|----------------------------|---------------------------|----------------------------|---------------------------|
| 5-9-2015 | 276 | 140 | 279 | 185 | 279 | 123 |
| 4-9-2015 | 276 | 140 | 279 | 185 | 279 | 124 |
| 3-9-2015 | 276 | 140 | 279 | 185 | 279 | 125 |
| 2-9-2015 | 276 | 140 | 279 | 185 | 279 | 126 |
| 1-9-2015 | 276 | 140 | 279 | 185 | 279 | 127 |
| 31-8-2015 | 276 | 140 | 279 | 185 | 279 | 128 |
| 30-8-2015 | 276 | 140 | 279 | 185 | 279 | 130 |

=====
 HARDDISK USAGE CIW_PRD_ORACLE2
 =====

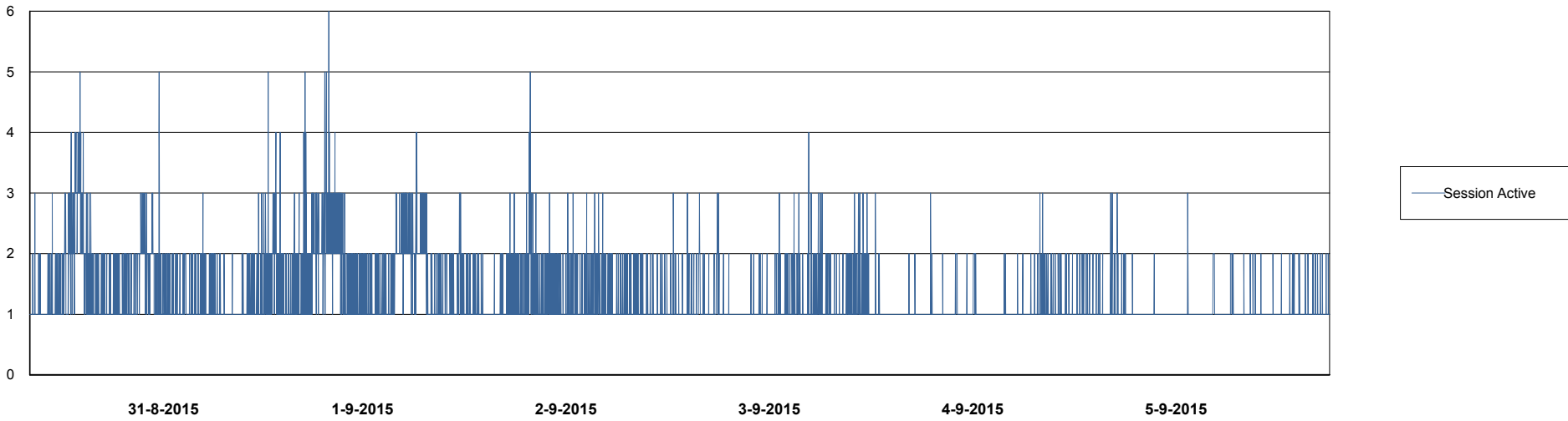
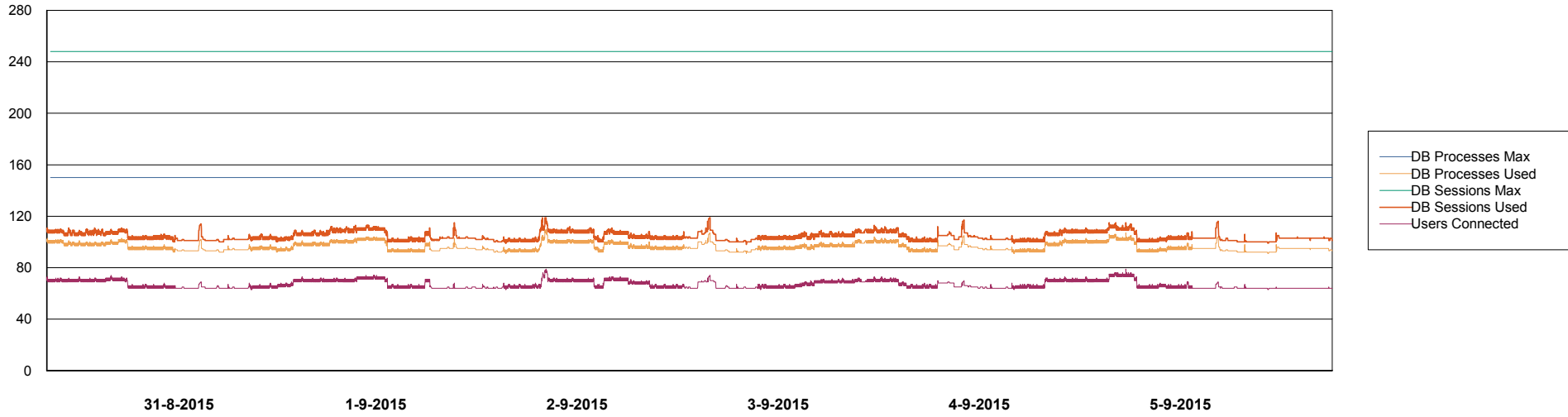
| | Total disk space on C (GB) | Free disk space on C (GB) | Total disk space on D (GB) | Free disk space on D (GB) | Total disk space on E (GB) | Free disk space on E (GB) |
|-----------|----------------------------|---------------------------|----------------------------|---------------------------|----------------------------|---------------------------|
| 5-9-2015 | 555 | 377 | 558 | 547 | 558 | 495 |
| 4-9-2015 | 555 | 377 | 558 | 547 | 558 | 496 |
| 3-9-2015 | 555 | 377 | 558 | 547 | 558 | 496 |
| 2-9-2015 | 555 | 377 | 558 | 547 | 558 | 497 |
| 1-9-2015 | 555 | 377 | 558 | 547 | 558 | 499 |
| 31-8-2015 | 555 | 377 | 558 | 547 | 558 | 500 |
| 30-8-2015 | 555 | 377 | 558 | 547 | 558 | 501 |

Weekly SLA Customer Report

Customer CIW Production
Database ID 45



DATABASE PERFORMANCE CIWDB_Production

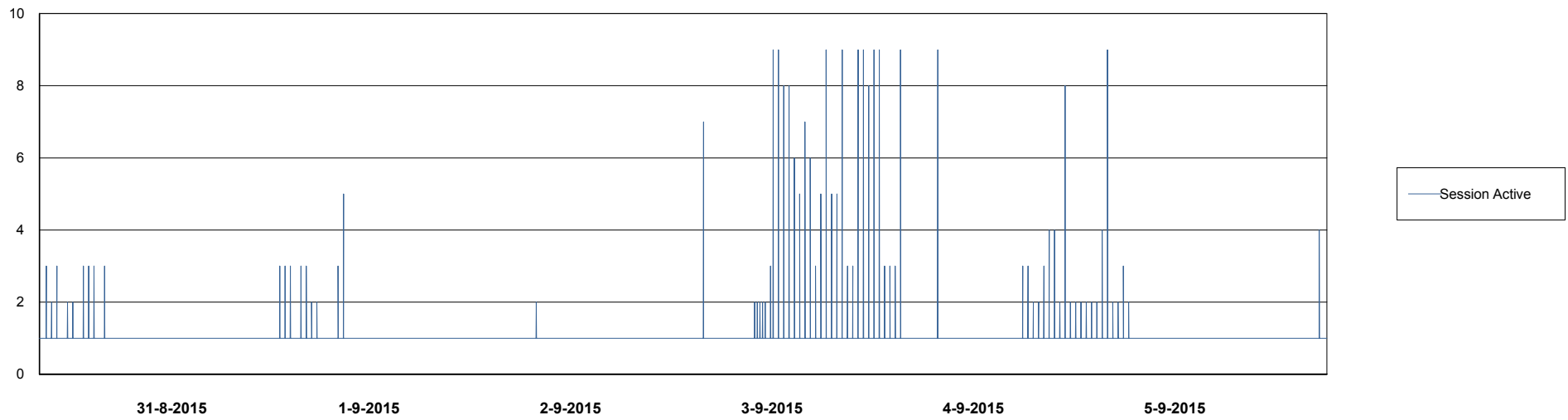
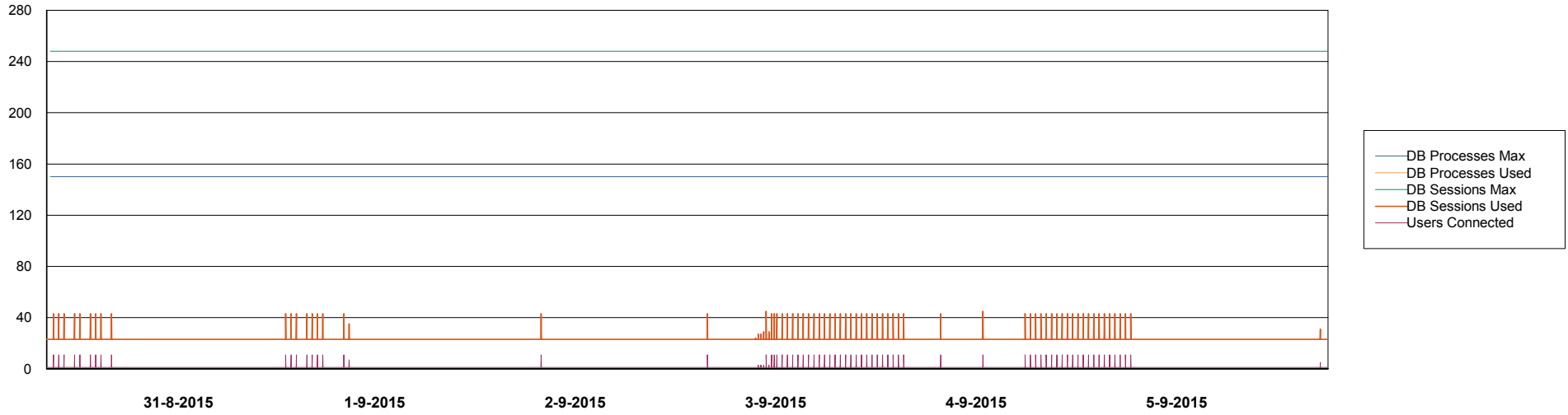


Weekly SLA Customer Report

Customer CIW Production
Database ID 45



DATABASE PERFORMANCE CIWDB_Standby



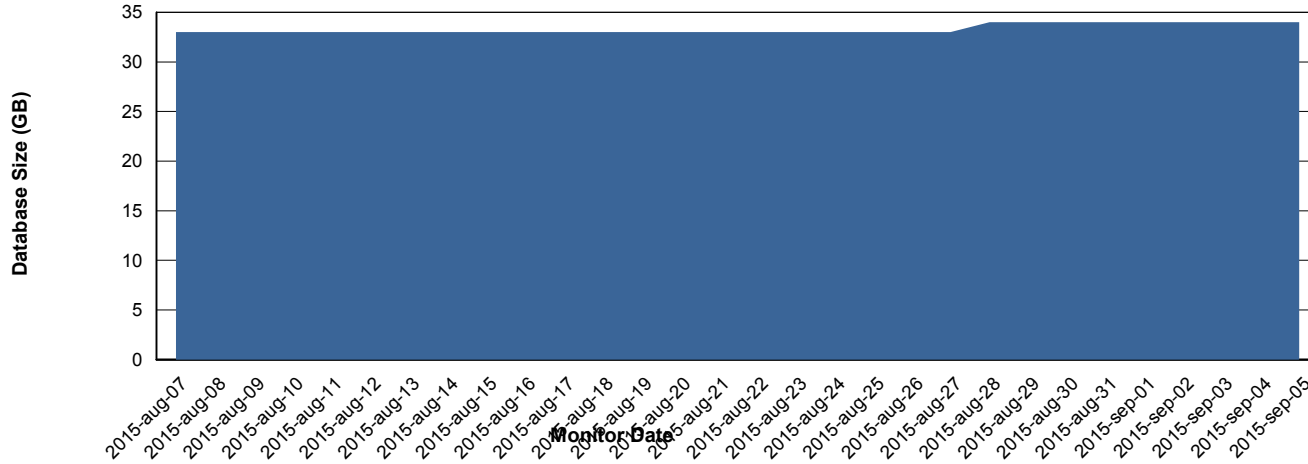
Weekly SLA Customer Report

Customer CIW Production
 Database ID 45



=====
 DATABASE SIZE CIWDB_Production
 =====

Database growth over last month



=====
 DATABASE TABLESPACES CIWDB_Production
 =====

TOTAL DATABASE SIZE PER TABLESPACE

| Date | Tablespace Name | Filesize (Gb) | Usedsize (Gb) | Percentage free |
|-----------|-----------------|---------------|---------------|-----------------|
| 5-9-2015 | ABSDATA | 38 | 30 | 21 |
| | INDX | 4 | 3 | 25 |
| 4-9-2015 | ABSDATA | 38 | 30 | 21 |
| | INDX | 4 | 3 | 25 |
| 3-9-2015 | ABSDATA | 38 | 30 | 21 |
| | INDX | 4 | 3 | 25 |
| 2-9-2015 | ABSDATA | 38 | 30 | 21 |
| | INDX | 4 | 2 | 50 |
| 1-9-2015 | ABSDATA | 38 | 30 | 21 |
| | INDX | 4 | 2 | 50 |
| 31-8-2015 | ABSDATA | 38 | 30 | 21 |
| | INDX | 4 | 2 | 50 |
| 30-8-2015 | ABSDATA | 38 | 30 | 21 |
| | INDX | 4 | 2 | 50 |

Weekly SLA Customer Report

Customer CIW Production
Database ID 45



=====
STANDBY DATABASE HEALTH CIW Production
=====

Recovery lag for last 7 days

