

Weekly SLA Customer Report

Customer NIX_Production
 Database ID 51



=====
 HARDDISK USAGE NIX_PRD_ABSAPP1
 =====

	Total disk space on C (GB)	Free disk space on C (GB)
29-8-2015	200	178
28-8-2015	200	178
27-8-2015	200	178
26-8-2015	200	178
25-8-2015	200	178
24-8-2015	200	178
23-8-2015	200	178

=====
 HARDDISK USAGE NIX_PRD_ABSAPP2
 =====

	Total disk space on C (GB)	Free disk space on C (GB)
29-8-2015	200	178
28-8-2015	200	178
27-8-2015	200	178
26-8-2015	200	178
25-8-2015	200	179
24-8-2015	200	179
23-8-2015	200	179

Weekly SLA Customer Report

Customer NIX_Production
 Database ID 51



=====
 HARDDISK USAGE NIX_PRD_ABSWEB01
 =====

	Total disk space on C (GB)	Free disk space on C (GB)
29-8-2015	300	283
28-8-2015	300	283
27-8-2015	300	283
26-8-2015	300	283
25-8-2015	300	283
24-8-2015	300	283
23-8-2015	300	283

=====
 HARDDISK USAGE NIX_PRD_ORACLE_B11
 =====

	Total disk space on C (GB)	Free disk space on C (GB)	Total disk space on E (GB)	Free disk space on E (GB)	Total disk space on F (GB)	Free disk space on F (GB)	Total disk space on G (GB)	Free disk space on G (GB)
29-8-2015	279	204	558	392	558	457	279	237
28-8-2015	279	204	558	392	558	458	279	237
27-8-2015	279	204	558	392	558	458	279	237
26-8-2015	279	204	558	392	558	458	279	237
25-8-2015	279	204	558	392	558	458	279	237
24-8-2015	279	204	558	392	558	458	279	237
23-8-2015	279	204	558	392	558	458	279	237

Weekly SLA Customer Report

Customer NIX_Production
 Database ID 51



=====
 HARDDISK USAGE NIX_PRD_ORCDB1
 =====

	Total disk space on C (GB)	Free disk space on C (GB)	Total disk space on E (GB)	Free disk space on E (GB)	Total disk space on F (GB)	Free disk space on F (GB)	Total disk space on G (GB)	Free disk space on G (GB)
29-8-2015	279	153	558	495	558	457	279	112
28-8-2015	279	153	558	496	558	457	279	113
27-8-2015	279	153	558	496	558	457	279	116
26-8-2015	279	153	558	493	558	451	279	118
25-8-2015	279	153	558	493	558	451	279	120
24-8-2015	279	153	558	497	558	456	279	122
23-8-2015	279	153	558	498	558	457	279	124

=====
 HARDDISK USAGE NIX_PRD_ORCDB2
 =====

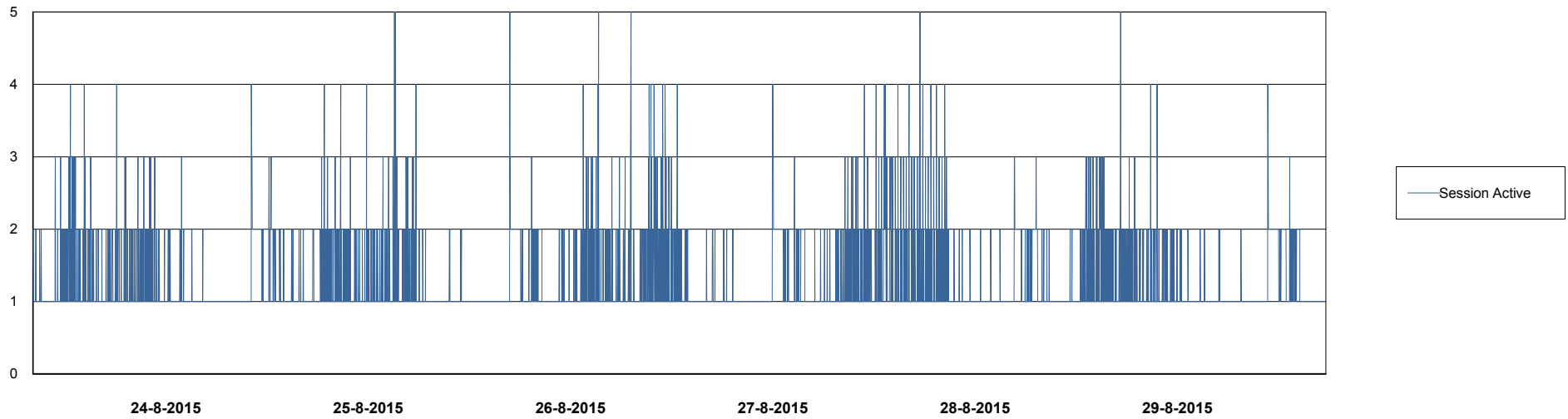
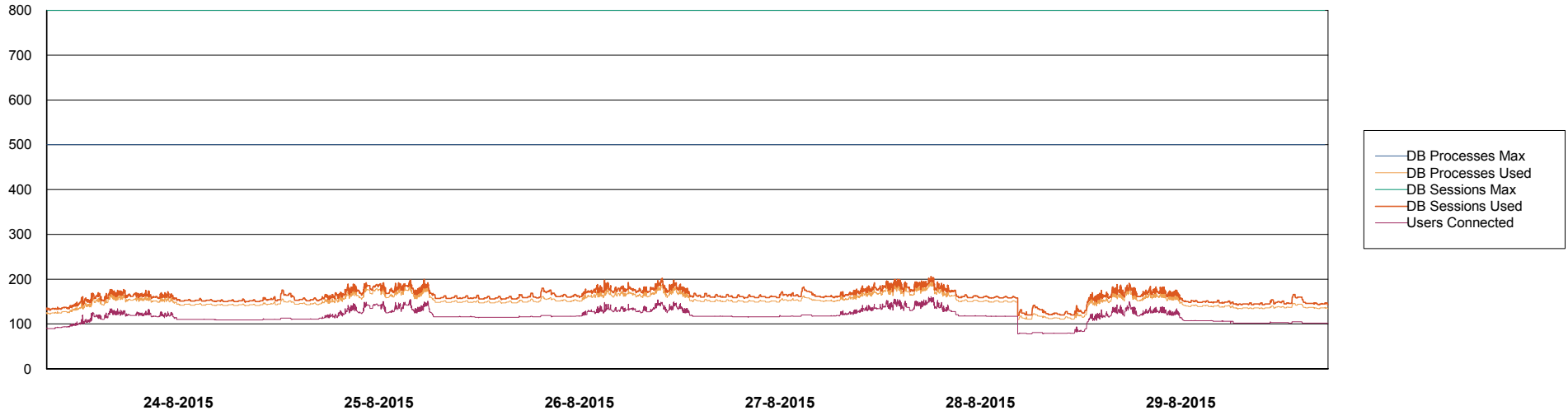
	Total disk space on C (GB)	Free disk space on C (GB)	Total disk space on E (GB)	Free disk space on E (GB)	Total disk space on F (GB)	Free disk space on F (GB)	Total disk space on G (GB)	Free disk space on G (GB)
29-8-2015	279	237	558	403	558	457	279	146
28-8-2015	279	237	558	403	558	457	279	147
27-8-2015	279	237	558	403	558	457	279	150
26-8-2015	279	237	558	403	558	457	279	152
25-8-2015	279	237	558	403	558	457	279	154
24-8-2015	279	237	558	403	558	457	279	157
23-8-2015	279	237	558	403	558	457	279	158

Weekly SLA Customer Report

Customer NIX_Production
Database ID 51



DATABASE PERFORMANCE NIXDB_Production



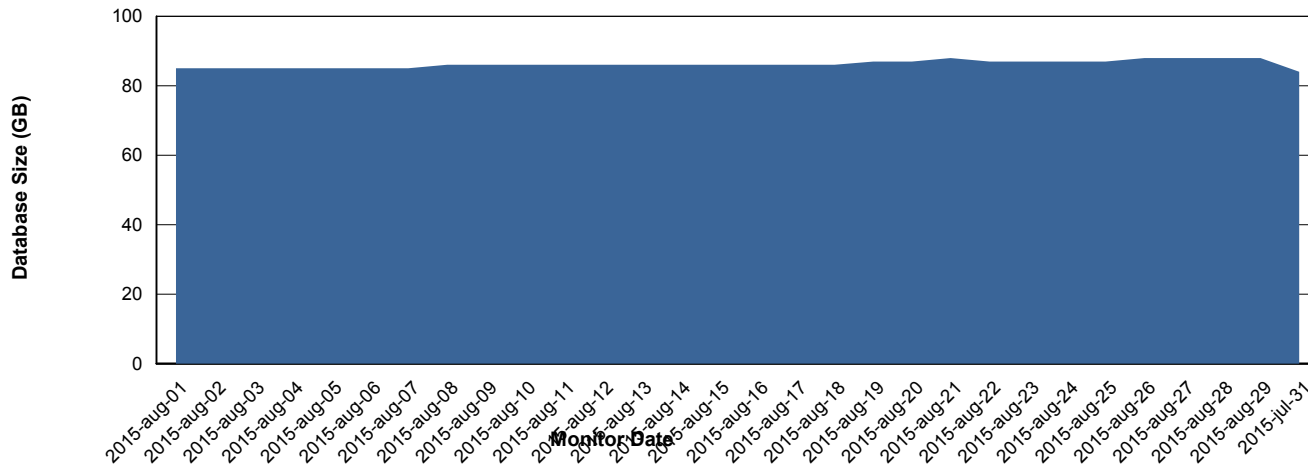
Weekly SLA Customer Report

Customer NIX_Production
 Database ID 51



=====
 DATABASE SIZE NIXDB_Production
 =====

Database growth over last month



=====
 DATABASE TABLESPACES NIXDB_Production
 =====

TOTAL DATABASE SIZE PER TABLESPACE

Date	Tablespace Name	Filesize (Gb)	Usedsize (Gb)	Percentage free
29-8-2015	ABSDATA	50	34	32
	INDX	100	52	48
28-8-2015	ABSDATA	50	34	32
	INDX	100	52	48
27-8-2015	ABSDATA	50	34	32
	INDX	100	52	48
26-8-2015	ABSDATA	50	34	32
	INDX	100	52	48
25-8-2015	ABSDATA	50	34	32
	INDX	100	52	48
24-8-2015	ABSDATA	50	34	32
	INDX	100	52	48
23-8-2015	ABSDATA	50	34	32
	INDX	100	52	48

Weekly SLA Customer Report

Customer NIX_Production
Database ID 51



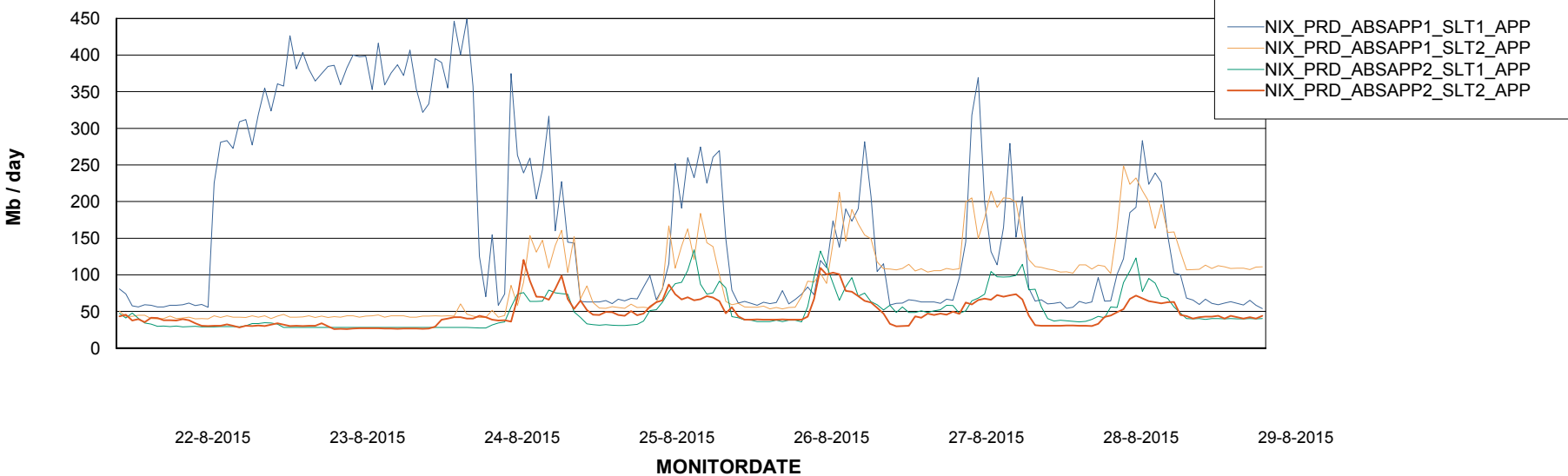
Weekly SLA Customer Report

Customer NIX_Production
Database ID 51



=====
ABSolute Application Server Services
=====

Avg memory used per ABS Server Service



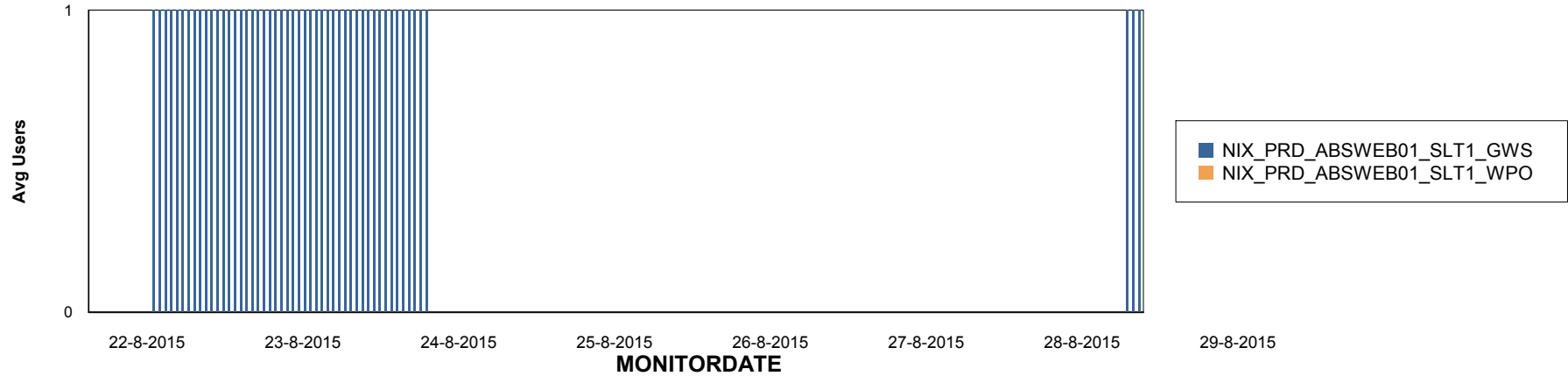
Weekly SLA Customer Report

Customer NIX_Production
Database ID 51

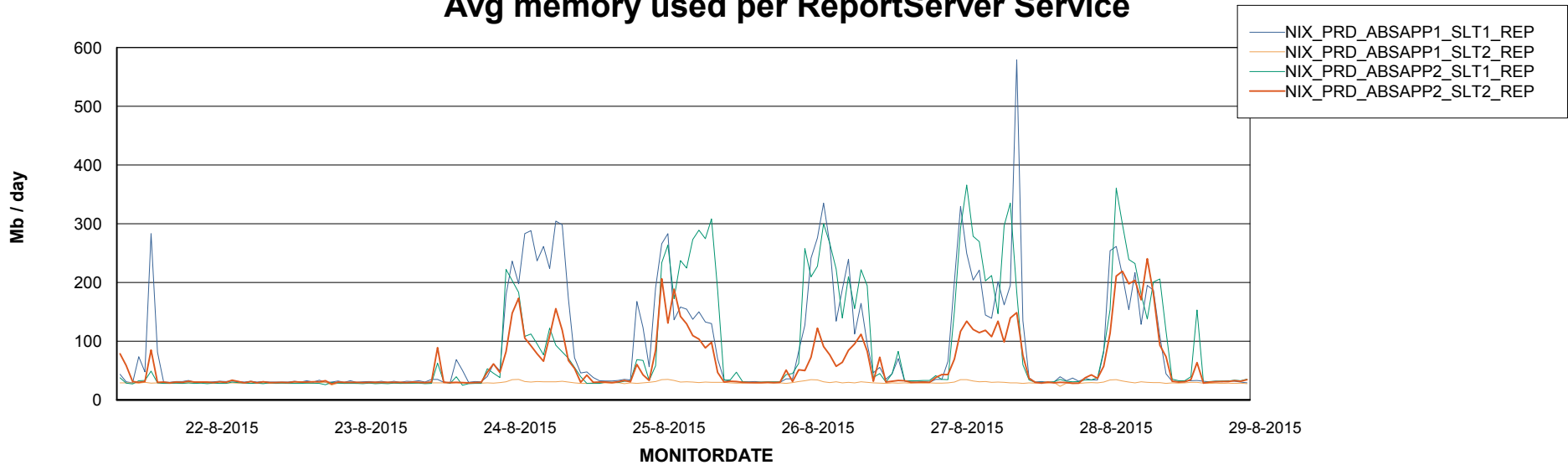


=====
ABSolute Application ReportServer Services
=====

Disaster per ReportServer



Avg memory used per ReportServer Service



Weekly SLA Customer Report

Customer NIX_Production
Database ID 51



Disaster per ABS component

