

# Weekly SLA Customer Report

Customer JWR Production  
 Database ID 43



=====  
 HARDDISK USAGE JWR\_PRD\_JWR-ABS-01  
 =====

	Used disk space on / (GB)	Total disk space on / (GB)	Free disk space on / (GB)
29-8-2015	29	49	18
28-8-2015	29	49	18
27-8-2015	29	49	18
26-8-2015	29	49	18
25-8-2015	29	49	18
24-8-2015	29	49	18
23-8-2015	29	49	18

=====  
 HARDDISK USAGE JWR\_PRD\_JWR-ABS-02  
 =====

	Used disk space on / (GB)	Total disk space on / (GB)	Free disk space on / (GB)
29-8-2015	32	49	15
28-8-2015	32	49	15
27-8-2015	32	49	15
26-8-2015	32	49	15
25-8-2015	32	49	15
24-8-2015	32	49	15
23-8-2015	32	49	15

## Weekly SLA Customer Report

Customer      JWR Production  
 Database ID    43



=====

HARDDISK USAGE    JWR\_PRD\_JWR-ODB-01

=====

	Used disk space on / (GB)	Total disk space on / (GB)	Free disk space on / (GB)
29-8-2015	99	148	42
28-8-2015	99	148	42
27-8-2015	100	148	40
26-8-2015	98	148	43
25-8-2015	99	148	42
24-8-2015	97	148	43
23-8-2015	96	148	45

=====

HARDDISK USAGE    JWR\_PRD\_JWR-ODB-02

=====

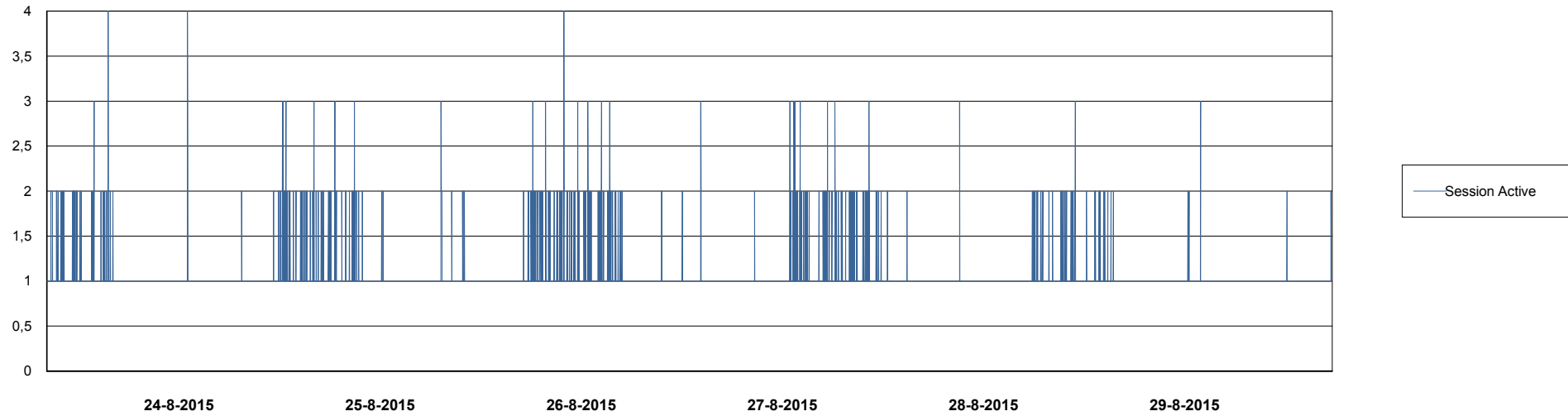
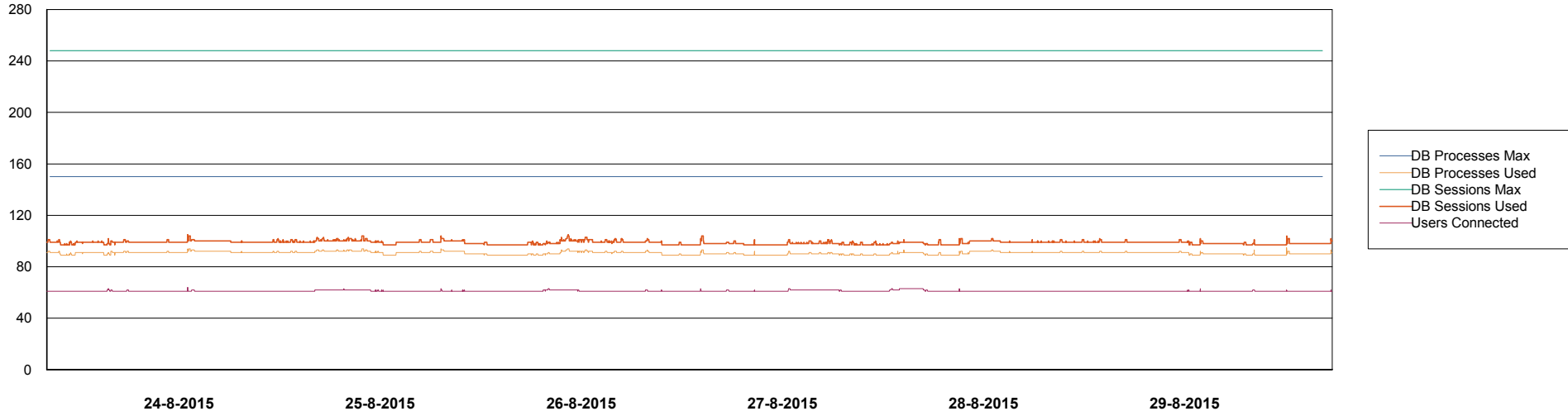
	Used disk space on / (GB)	Total disk space on / (GB)	Free disk space on / (GB)
29-8-2015	96	138	35
28-8-2015	96	138	35
27-8-2015	96	138	35
26-8-2015	96	138	35
25-8-2015	96	138	35
24-8-2015	96	138	35
23-8-2015	95	138	35

# Weekly SLA Customer Report

Customer JWR Production  
Database ID 43



DATABASE PERFORMANCE JWRDB\_Production



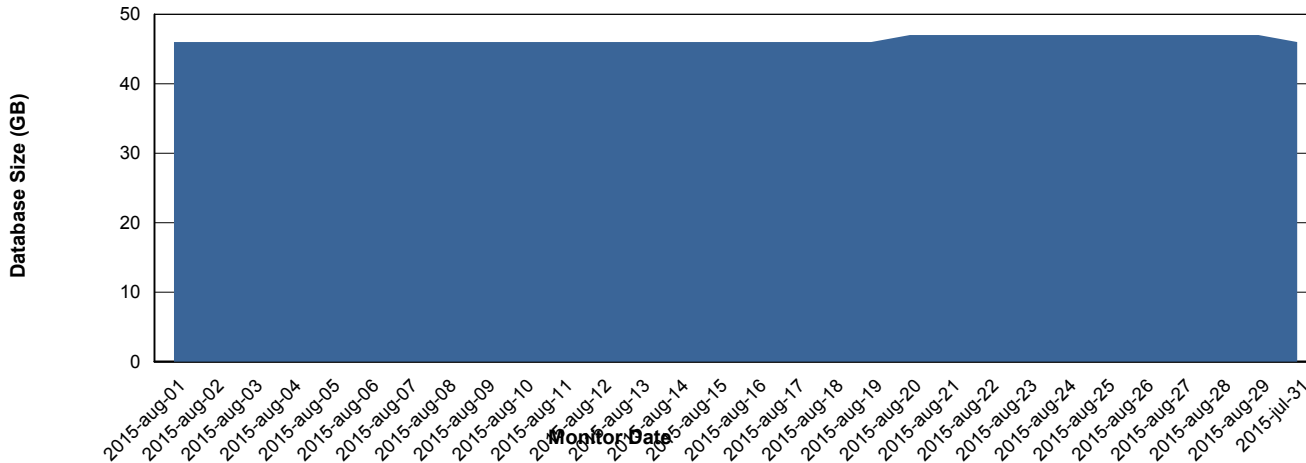
# Weekly SLA Customer Report

Customer JWR Production  
 Database ID 43



=====  
 DATABASE SIZE JWRDB\_Production  
 =====

## Database growth over last month



=====  
 DATABASE TABLESPACES JWRDB\_Production  
 =====

### TOTAL DATABASE SIZE PER TABLESPACE

Date	Tablespace Name	Filesize (Gb)	Usedsize (Gb)	Percentage free
29-8-2015	ABSDATA	18	13	28
	INDX	40	33	18
28-8-2015	ABSDATA	18	13	28
	INDX	40	33	18
27-8-2015	ABSDATA	18	13	28
	INDX	40	33	18
26-8-2015	ABSDATA	18	13	28
	INDX	40	33	18
25-8-2015	ABSDATA	18	13	28
	INDX	40	33	18
24-8-2015	ABSDATA	18	13	28
	INDX	40	33	18
23-8-2015	ABSDATA	18	13	28
	INDX	38	33	13

## Weekly SLA Customer Report

---

Customer JWR Production  
Database ID 43



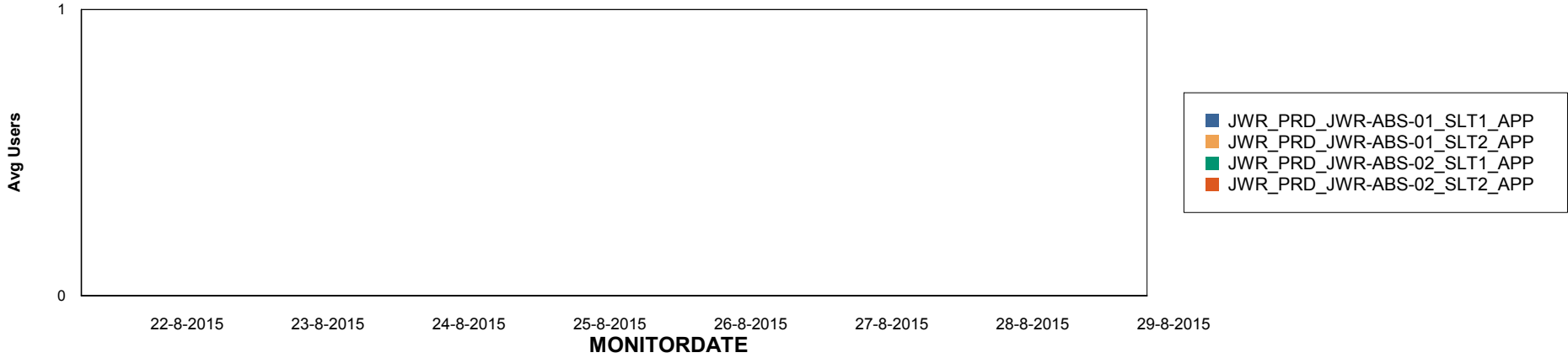
# Weekly SLA Customer Report

Customer JWR Production  
Database ID 43

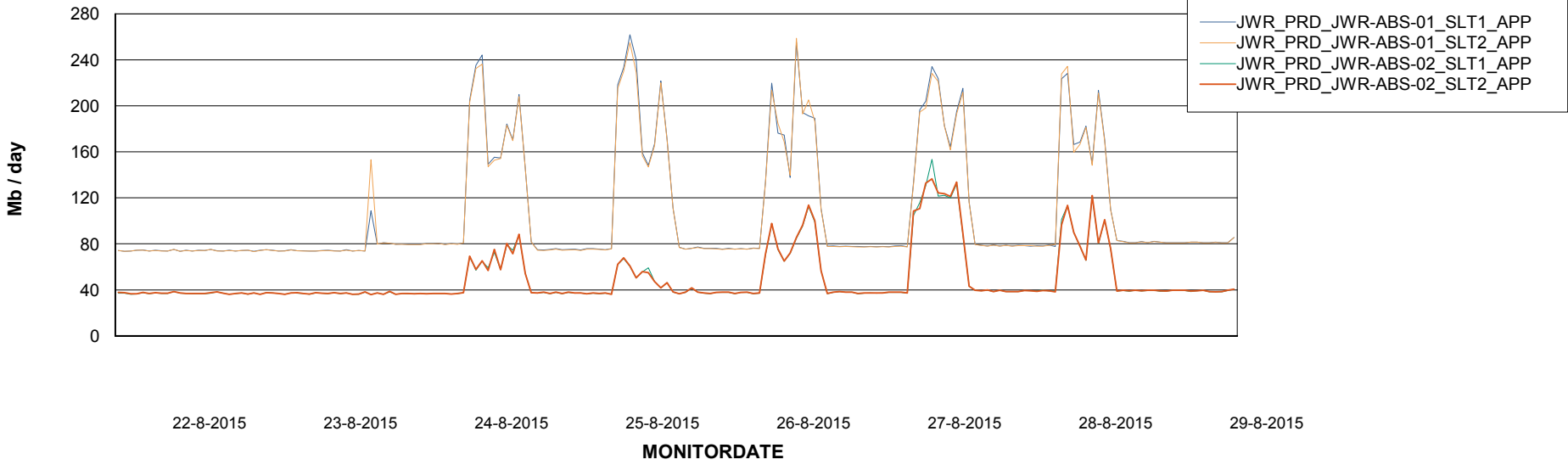


=====  
ABSolute Application Server Services  
=====

## Disaster per ABS Server



## Avg memory used per ABS Server Service



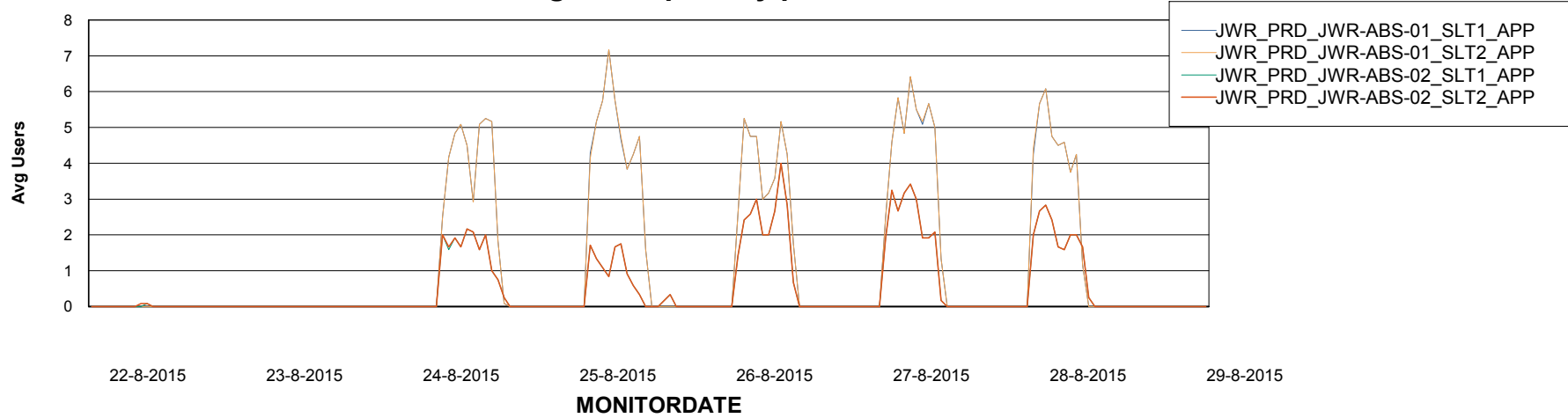
# Weekly SLA Customer Report

Customer JWR Production  
Database ID 43



=====  
ABSolute Application Server Services  
=====

### Avg users per day per ABS server



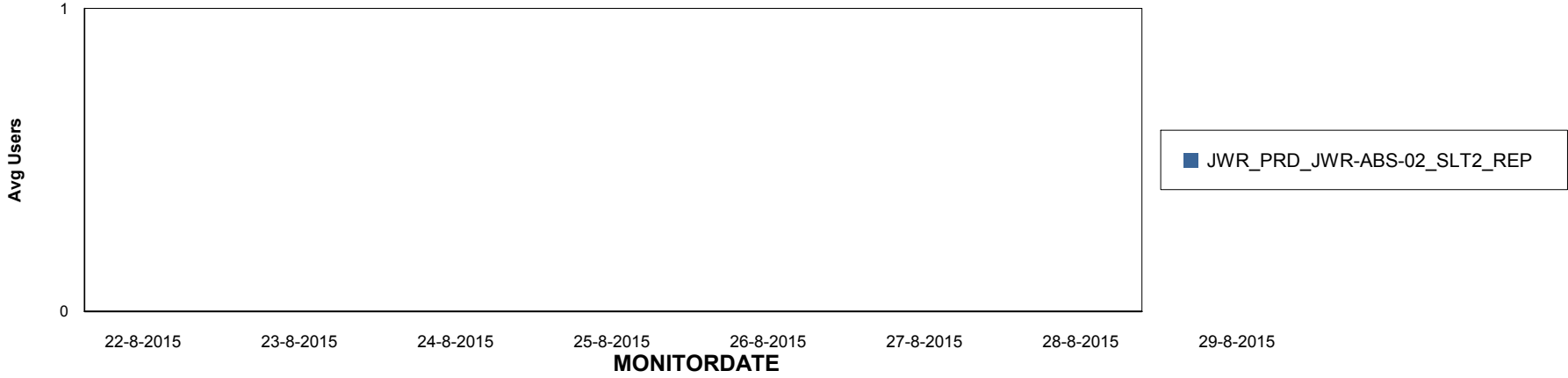
# Weekly SLA Customer Report

Customer JWR Production  
Database ID 43

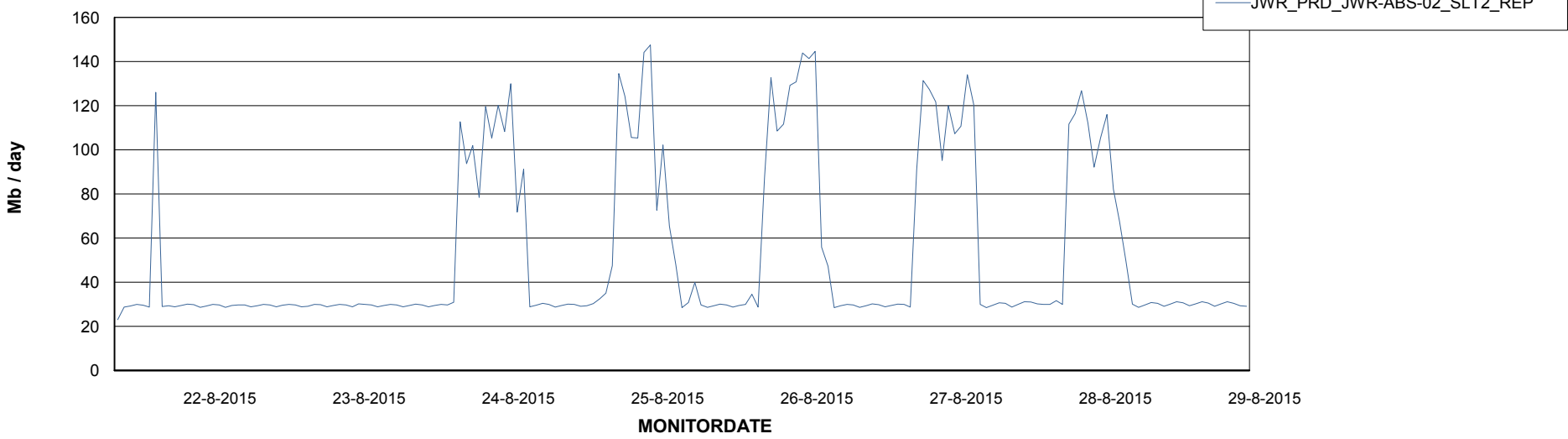


=====  
ABSolute Application ReportServer Services  
=====

## Disaster per ReportServer



## Avg memory used per ReportServer Service



# Weekly SLA Customer Report

Customer JWR Production  
Database ID 43



## Disaster per ABS component

