

## Weekly SLA Customer Report

Customer      JWR Production  
 Database ID    43



=====  
 HARDDISK USAGE    JWR\_PRD\_JWR-ABS-01  
 =====

	Used disk space on / (GB)	Total disk space on / (GB)	Free disk space on / (GB)
22-8-2015	29	49	18
21-8-2015	29	49	18
20-8-2015	29	49	18
19-8-2015	29	49	18
18-8-2015	30	49	17
17-8-2015	29	49	18
16-8-2015	29	49	18

=====  
 HARDDISK USAGE    JWR\_PRD\_JWR-ABS-02  
 =====

	Used disk space on / (GB)	Total disk space on / (GB)	Free disk space on / (GB)
22-8-2015	32	49	15
21-8-2015	32	49	15
20-8-2015	32	49	15
19-8-2015	32	49	15
18-8-2015	32	49	15
17-8-2015	32	49	15
16-8-2015	32	49	15

## Weekly SLA Customer Report

Customer      JWR Production  
 Database ID    43



=====

HARDDISK USAGE    JWR\_PRD\_JWR-ODB-01

=====

	Used disk space on / (GB)	Total disk space on / (GB)	Free disk space on / (GB)
22-8-2015	96	148	45
21-8-2015	96	148	45
20-8-2015	96	148	45
19-8-2015	96	148	45
18-8-2015	96	148	45
17-8-2015	96	148	45
16-8-2015	96	148	45

=====

HARDDISK USAGE    JWR\_PRD\_JWR-ODB-02

=====

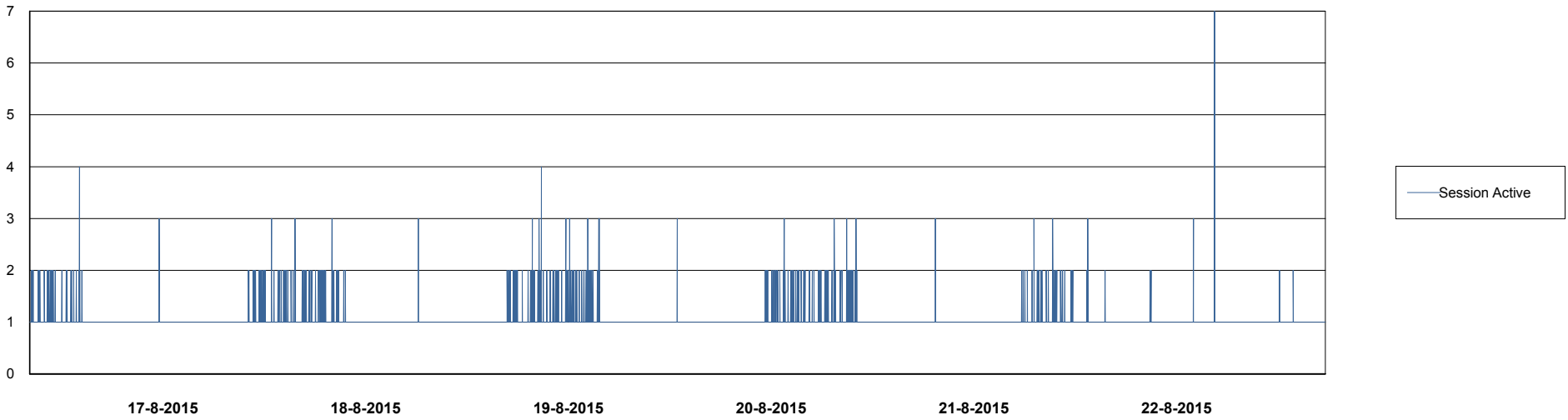
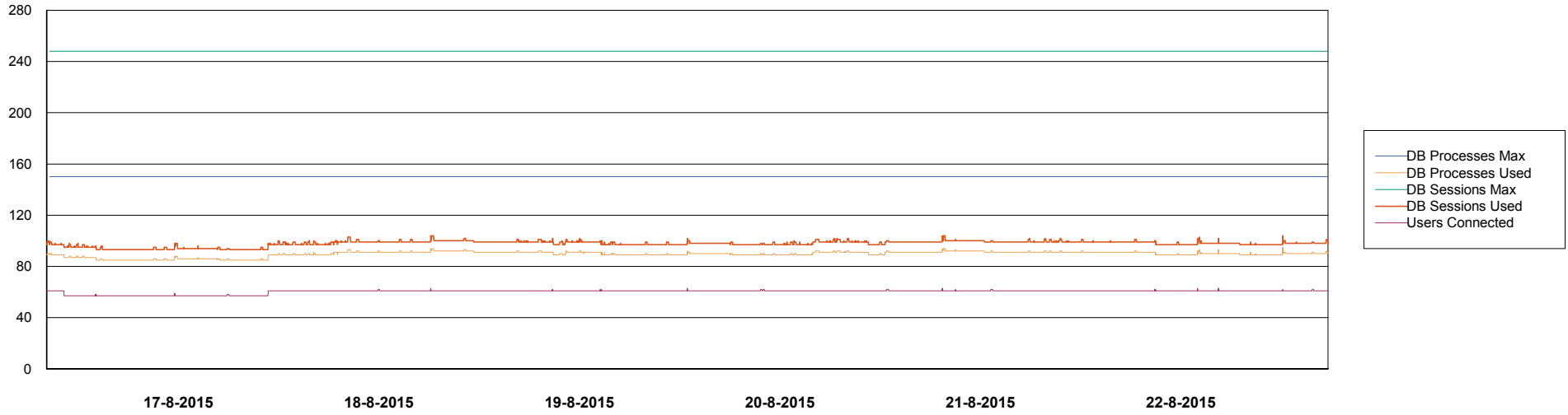
	Used disk space on / (GB)	Total disk space on / (GB)	Free disk space on / (GB)
22-8-2015	95	138	36
21-8-2015	95	138	35
20-8-2015	96	138	35
19-8-2015	96	138	35
18-8-2015	96	138	35
17-8-2015	96	138	35
16-8-2015	95	138	36

# Weekly SLA Customer Report

Customer JWR Production  
Database ID 43



DATABASE PERFORMANCE JWRDB\_Production



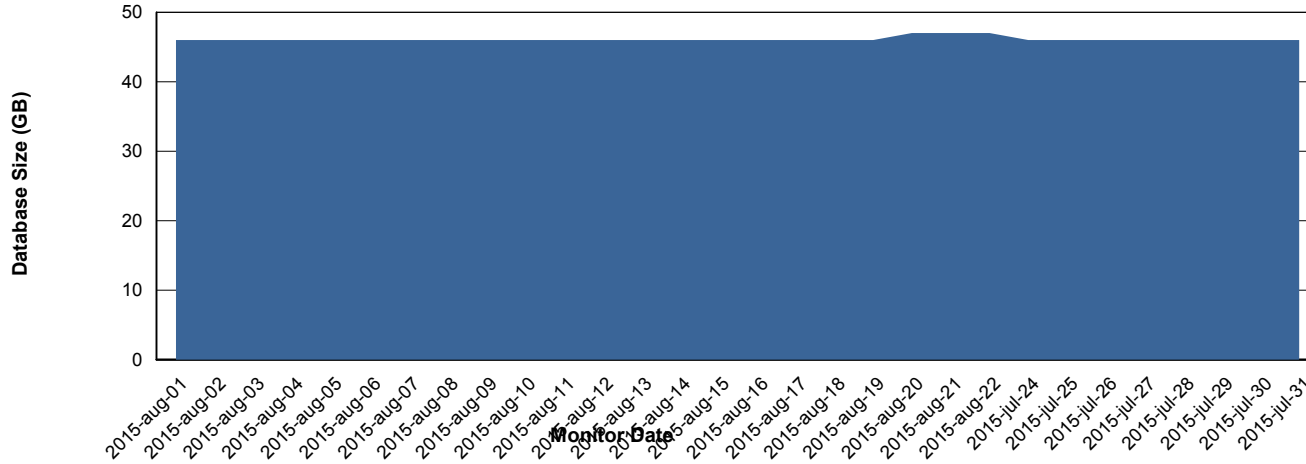
# Weekly SLA Customer Report

Customer JWR Production  
 Database ID 43



=====  
 DATABASE SIZE JWRDB\_Production  
 =====

## Database growth over last month



=====  
 DATABASE TABLESPACES JWRDB\_Production  
 =====

### TOTAL DATABASE SIZE PER TABLESPACE

Date	Tablespace Name	Filesize (Gb)	Usedsize (Gb)	Percentage free
22-8-2015	ABSDATA	18	13	28
	INDX	38	33	13
21-8-2015	ABSDATA	18	13	28
	INDX	38	33	13
20-8-2015	ABSDATA	18	13	28
	INDX	38	33	13
19-8-2015	ABSDATA	18	13	28
	INDX	38	33	13
18-8-2015	ABSDATA	18	13	28
	INDX	38	33	13
17-8-2015	ABSDATA	18	13	28
	INDX	38	32	16
16-8-2015	ABSDATA	18	13	28
	INDX	38	32	16

## Weekly SLA Customer Report

---

Customer     JWR Production  
Database ID   43



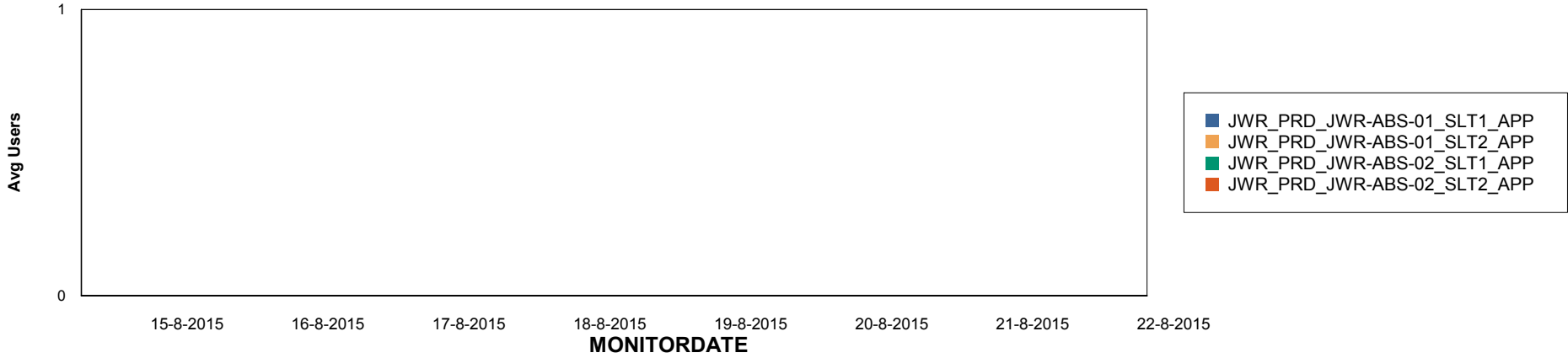
# Weekly SLA Customer Report

Customer JWR Production  
Database ID 43

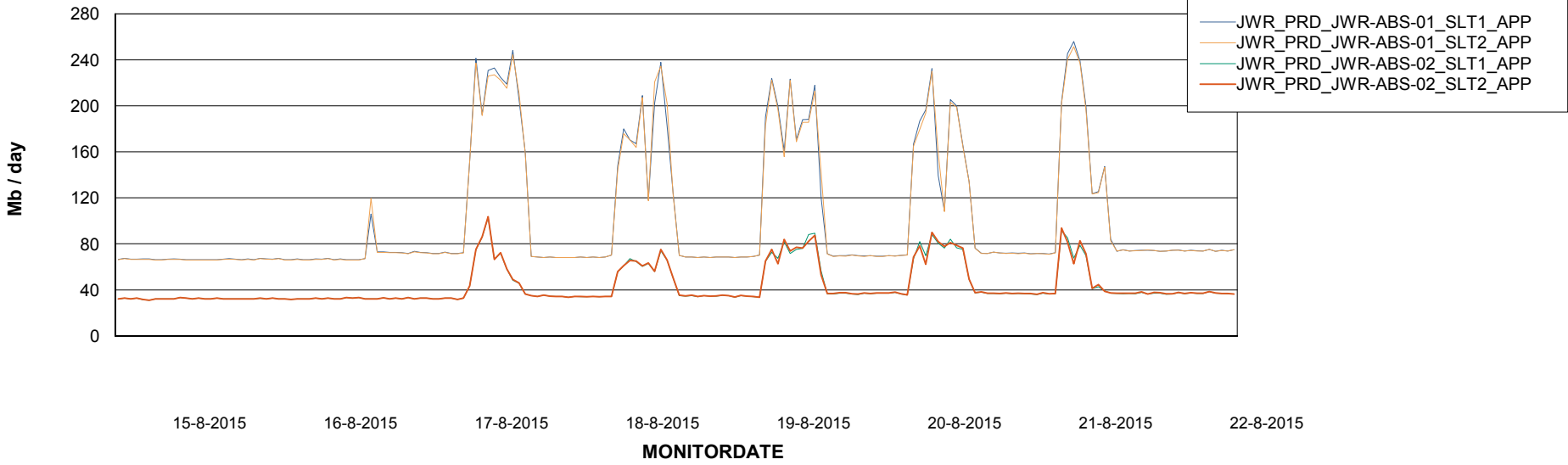


=====  
ABSSolute Application Server Services  
=====

## Disaster per ABS Server



## Avg memory used per ABS Server Service



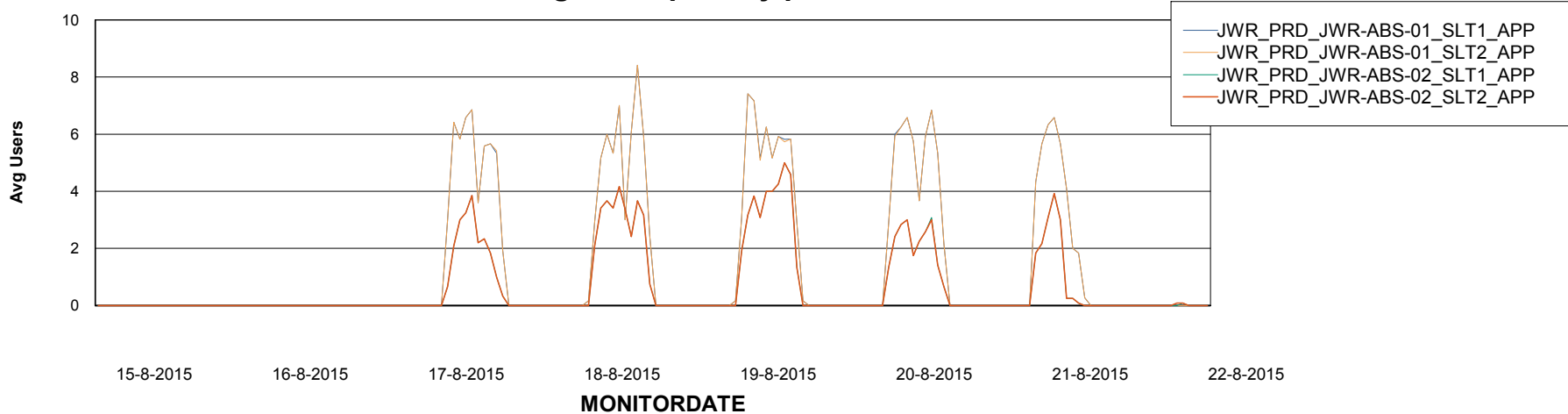
# Weekly SLA Customer Report

Customer JWR Production  
Database ID 43



=====  
ABSolute Application Server Services  
=====

### Avg users per day per ABS server



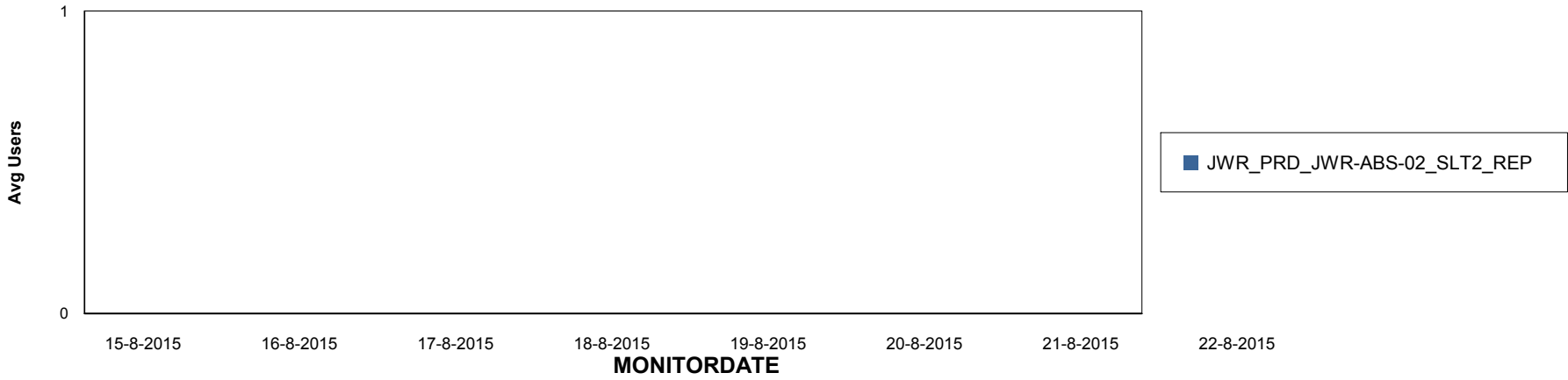
# Weekly SLA Customer Report

Customer JWR Production  
Database ID 43

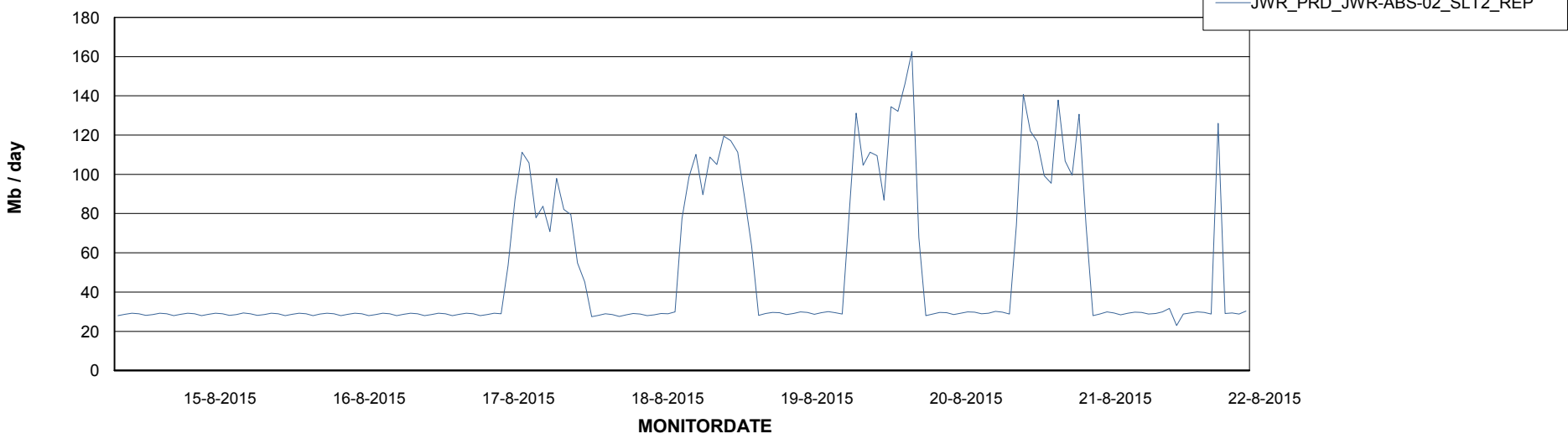


=====  
ABSolute Application ReportServer Services  
=====

## Disaster per ReportServer



## Avg memory used per ReportServer Service



# Weekly SLA Customer Report

Customer JWR Production  
Database ID 43



## Disaster per ABS component

