

Weekly SLA Customer Report

Customer CSC_Production
 Database ID 50



=====
 HARDDISK USAGE CSC_PRD_ABSSRV
 =====

	Total disk space on C (GB)	Free disk space on C (GB)	Total disk space on D (GB)	Free disk space on D (GB)	Total disk space on E (GB)	Free disk space on E (GB)
22-8-2015	102	56	220	133	325	72
21-8-2015	102	56	220	133	325	57
20-8-2015	102	56	220	133	325	52
19-8-2015	102	56	220	133	325	56
18-8-2015	102	56	220	133	325	60
17-8-2015	102	56	220	133	325	64
16-8-2015	102	56	220	133	325	67

=====
 HARDDISK USAGE CSC_PRD_ABS01
 =====

	Total disk space on C (GB)	Free disk space on C (GB)	Total disk space on D (GB)	Free disk space on D (GB)	Total disk space on E (GB)	Free disk space on E (GB)
22-8-2015	110	35	210	115	500	218
21-8-2015	110	35	210	115	500	218
20-8-2015	110	35	210	115	500	218
19-8-2015	110	33	210	115	500	218
18-8-2015	110	24	210	115	500	218
17-8-2015	110	26	210	115	500	218
16-8-2015	110	27	210	115	500	218

Weekly SLA Customer Report

Customer CSC_Production
 Database ID 50



=====
 HARDDISK USAGE CSC_PRD_ABS02
 =====

	Total disk space on C (GB)	Free disk space on C (GB)
22-8-2015	80	43
21-8-2015	80	43
20-8-2015	80	43
19-8-2015	80	43
18-8-2015	80	43
17-8-2015	80	43
16-8-2015	80	43

=====
 HARDDISK USAGE CSC_PRD_WEBSRV
 =====

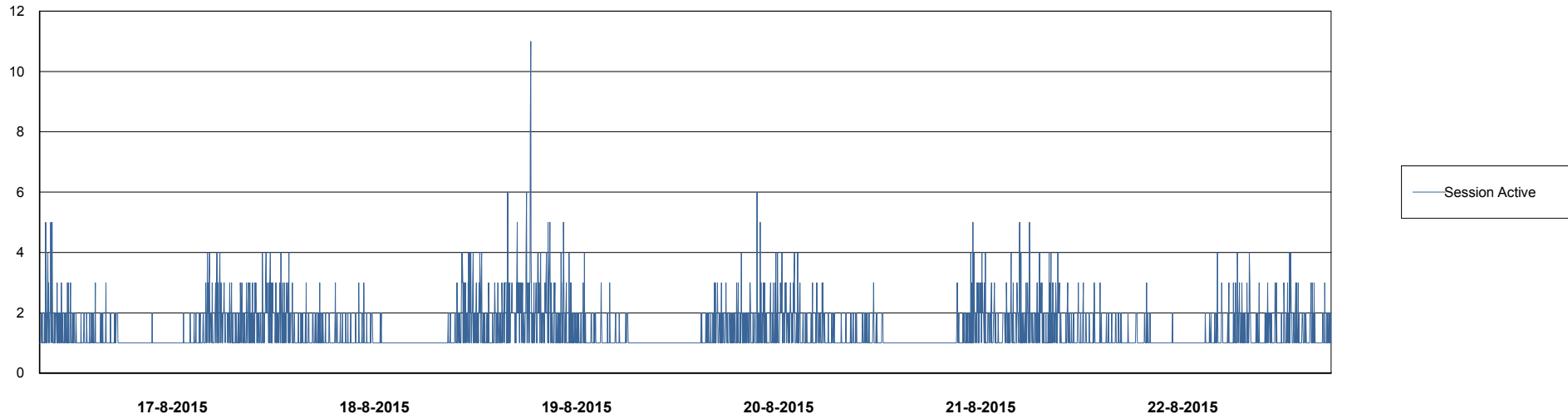
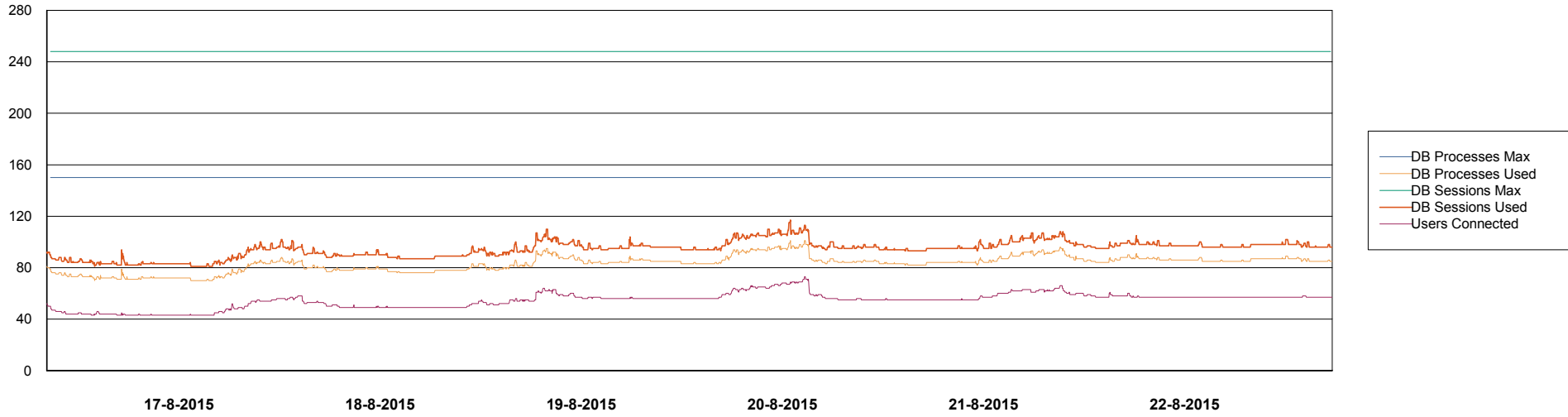
	Used disk space on C (GB)	Total disk space on C (GB)	Free disk space on C (GB)
22-8-2015	36	59	23
21-8-2015	36	59	23
20-8-2015	36	59	23
19-8-2015	36	59	23
18-8-2015	36	59	23
17-8-2015	36	59	23
16-8-2015	36	59	23

Weekly SLA Customer Report

Customer CSC_Production
Database ID 50



DATABASE PERFORMANCE CSCDB_Standby



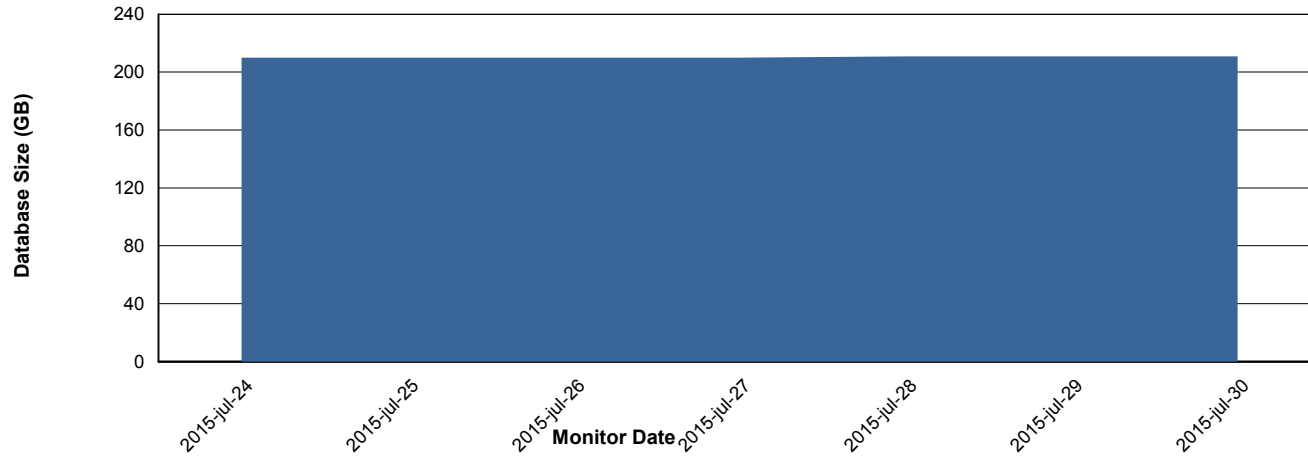
Weekly SLA Customer Report

Customer CSC_Production
Database ID 50



=====
DATABASE SIZE CSCDB_Production
=====

Database growth over last month



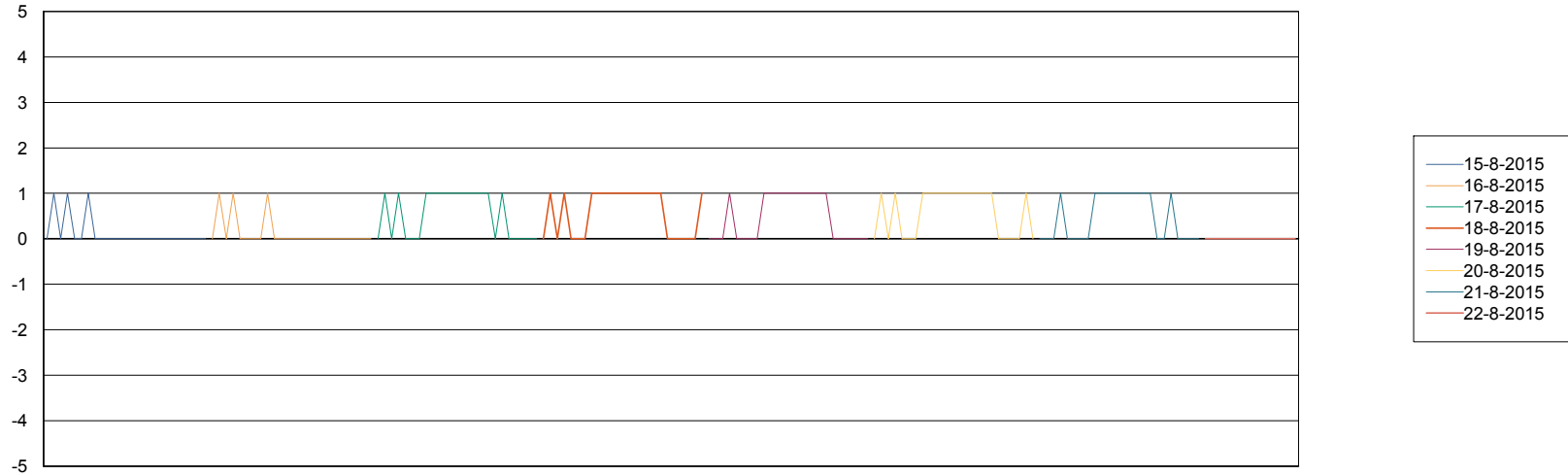
Weekly SLA Customer Report

Customer CSC_Production
Database ID 50



=====
STANDBY DATABASE HEALTH CSC_Production
=====

Recovery lag for last 7 days



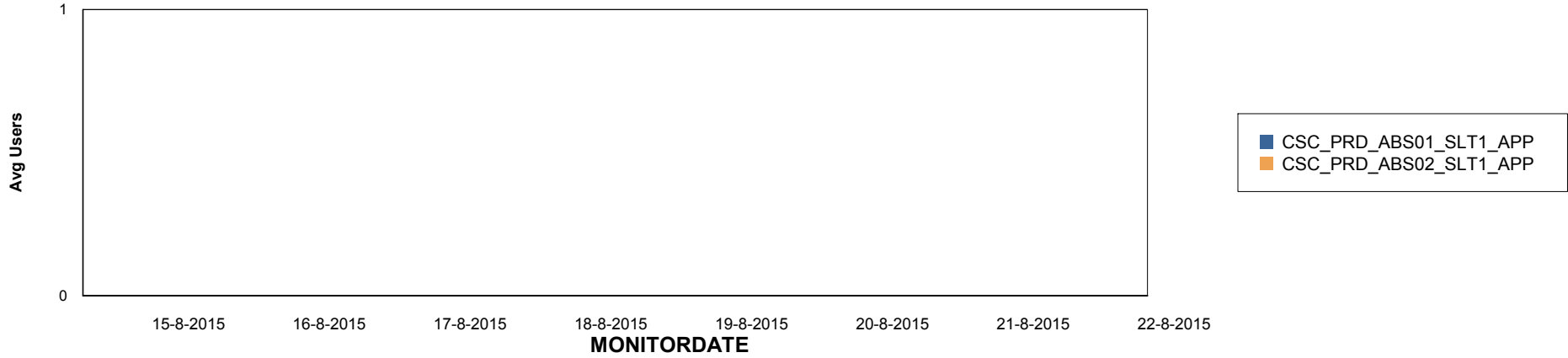
Weekly SLA Customer Report

Customer CSC_Production
Database ID 50

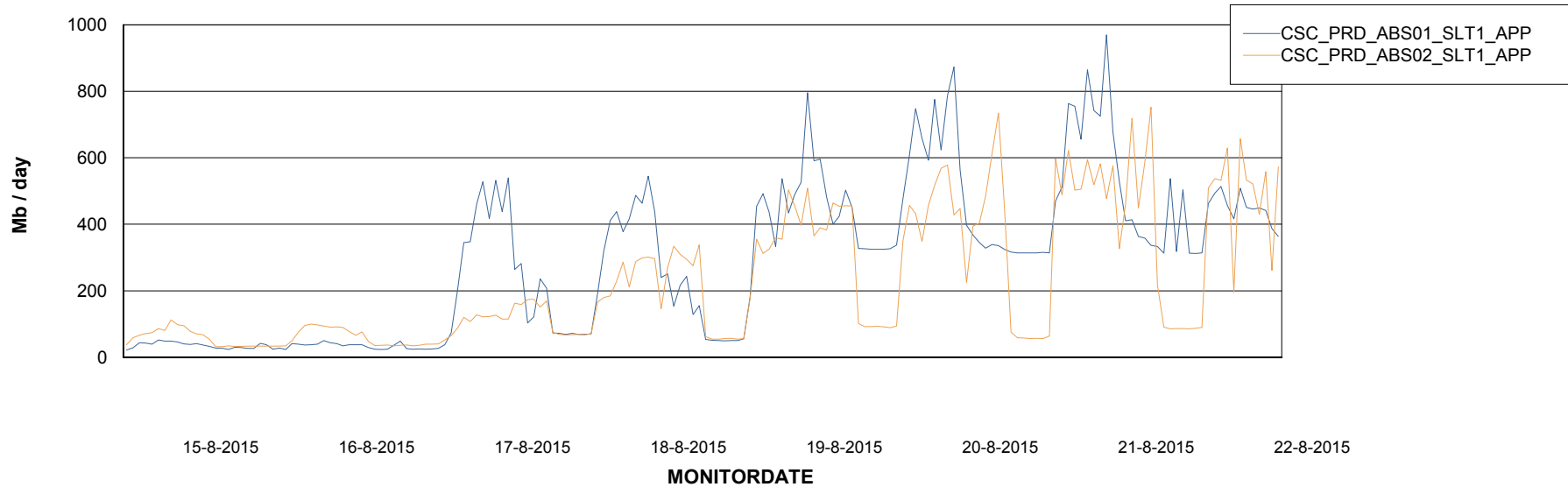


=====
ABSolute Application Server Services
=====

Disaster per ABS Server



Avg memory used per ABS Server Service



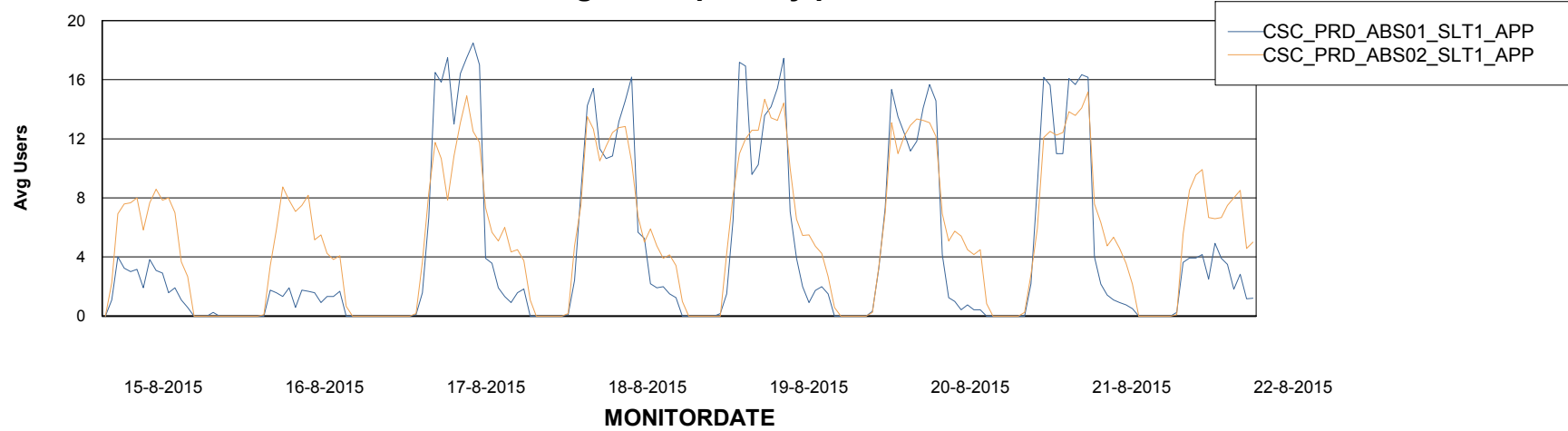
Weekly SLA Customer Report

Customer CSC_Production
Database ID 50



=====
ABSSolute Application Server Services
=====

Avg users per day per ABS server



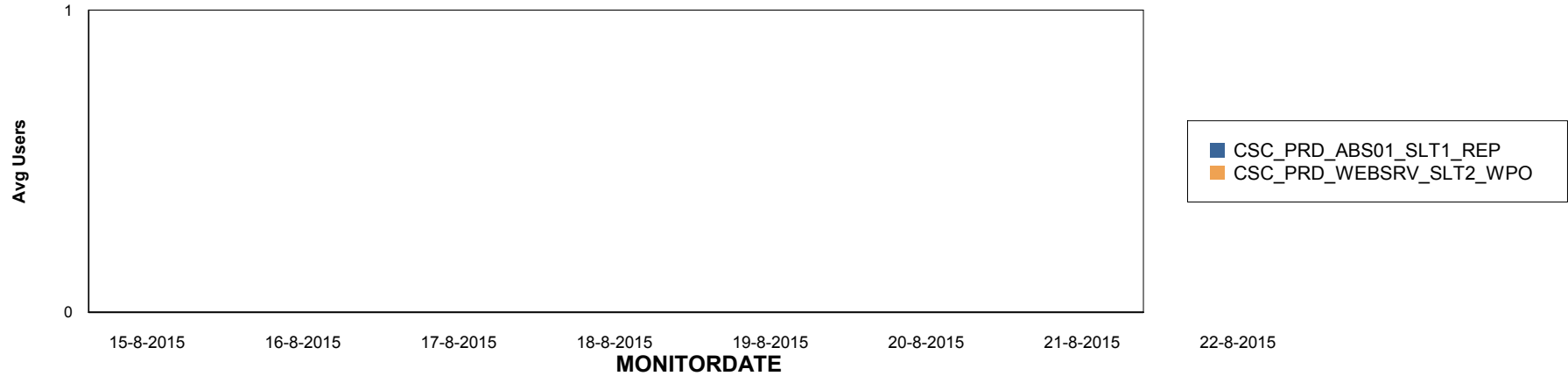
Weekly SLA Customer Report

Customer CSC_Production
Database ID 50

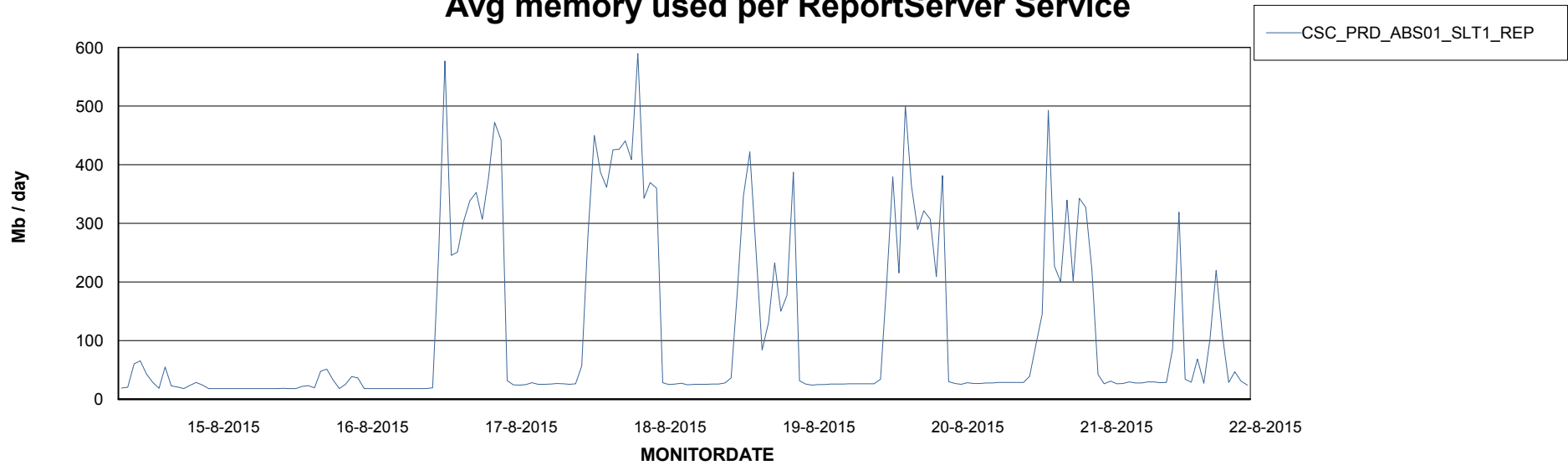


=====
ABSolute Application ReportServer Services
=====

Disaster per ReportServer



Avg memory used per ReportServer Service



Weekly SLA Customer Report

Customer CSC_Production
Database ID 50



Disaster per ABS component

