

Weekly SLA Customer Report

Customer BOH_Production
 Database ID 55



=====
 HARDDISK USAGE BOH_PRD_ORACLE1
 =====

	Total disk space on C (GB)	Free disk space on C (GB)	Total disk space on D (GB)	Free disk space on D (GB)	Total disk space on E (GB)	Free disk space on E (GB)
22-8-2015	130	35	100	52	220	32
21-8-2015	130	28	100	52	220	33
20-8-2015	130	33	100	52	220	37
19-8-2015	130	38	100	52	220	60
18-8-2015	130	40	100	52	220	84
17-8-2015	130	39	100	52	220	67
16-8-2015	130	40	100	52	220	31

=====
 HARDDISK USAGE BOH_PRD_ORACLE2
 =====

	Total disk space on C (GB)	Free disk space on C (GB)	Total disk space on D (GB)	Free disk space on D (GB)	Total disk space on E (GB)	Free disk space on E (GB)
22-8-2015	557	453	227	179	329	184
21-8-2015	557	453	227	179	329	186
20-8-2015	557	453	227	179	329	188
19-8-2015	557	453	227	179	329	190
18-8-2015	557	453	227	179	329	193
17-8-2015	557	453	227	179	329	195
16-8-2015	557	453	227	179	329	197

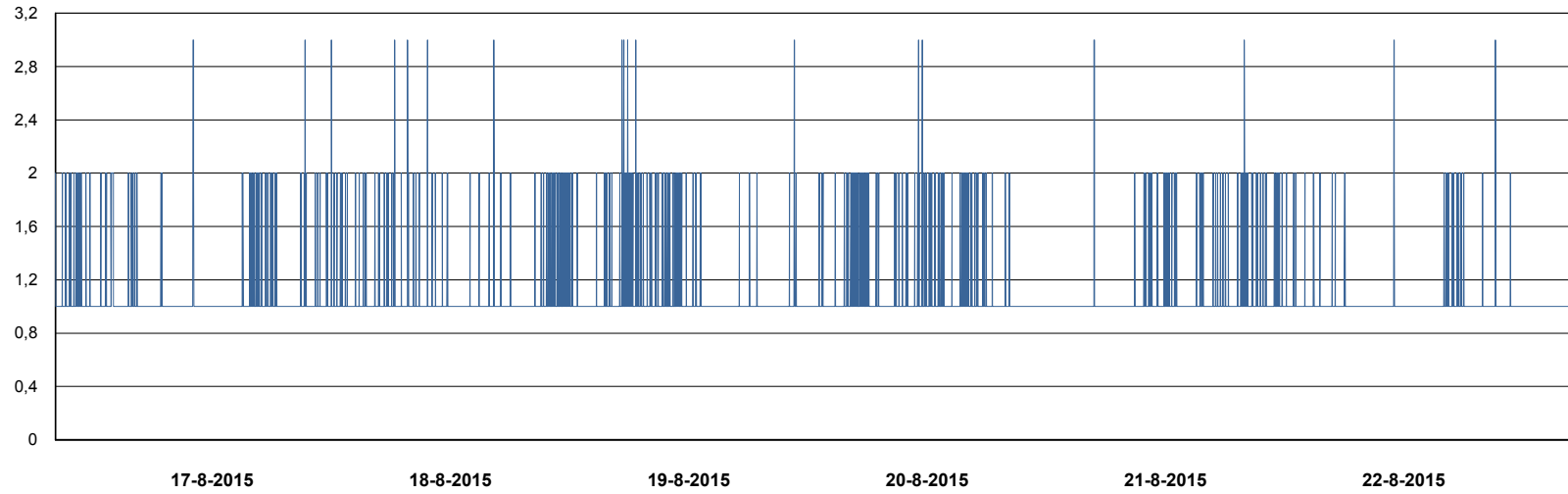
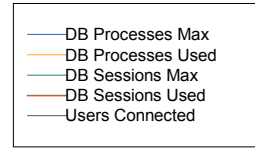
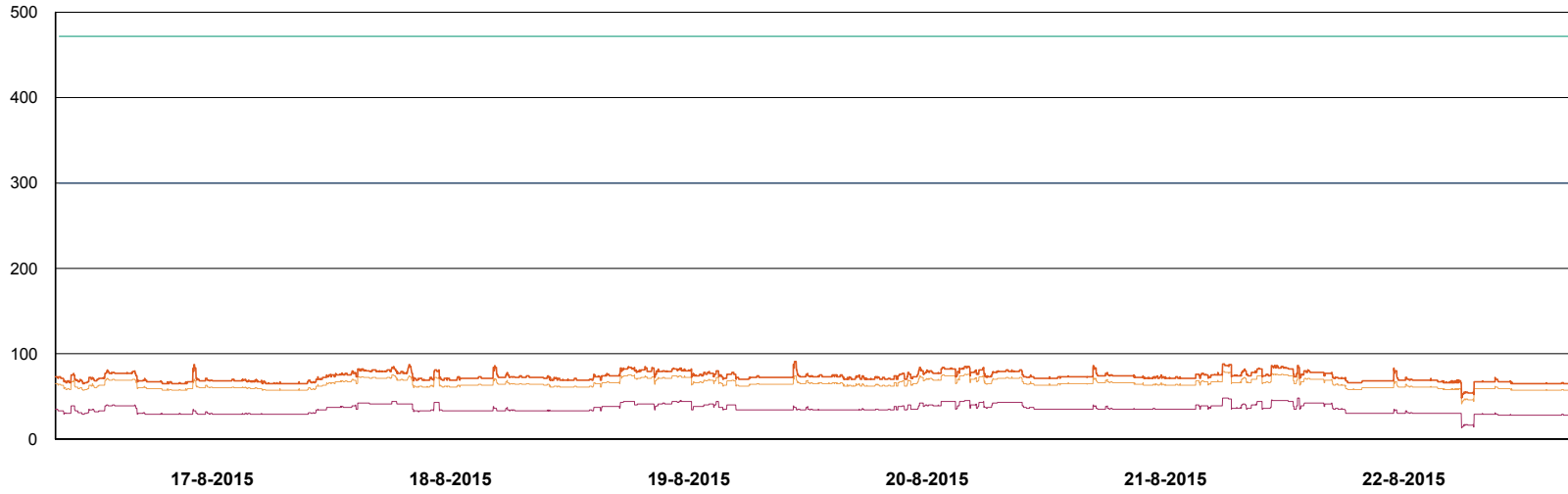
Weekly SLA Customer Report

Customer BOH_Production
Database ID 55



DATABASE PERFORMANCE

BOHDB_Production

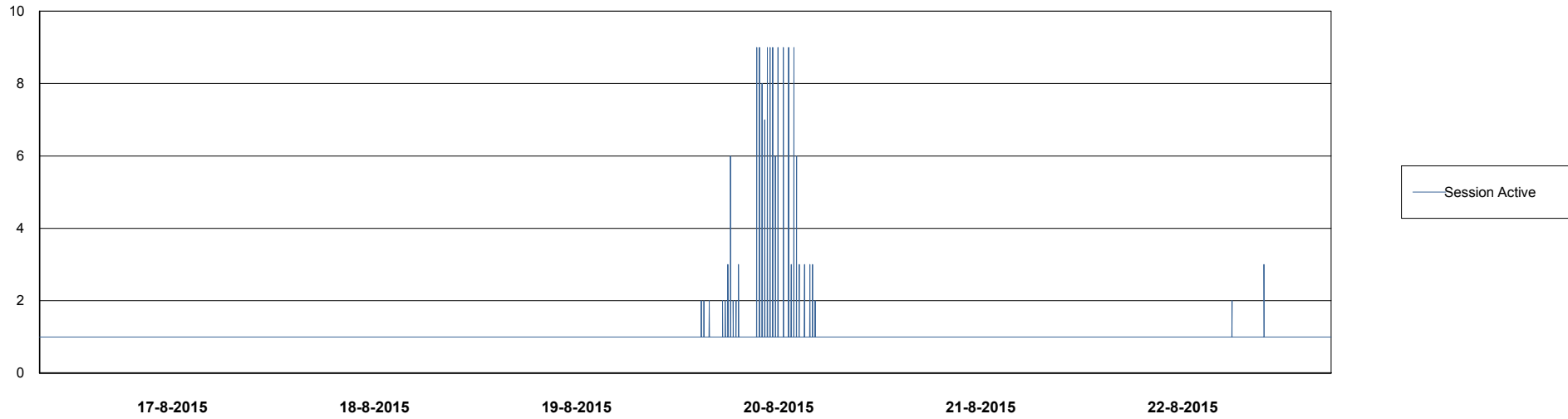
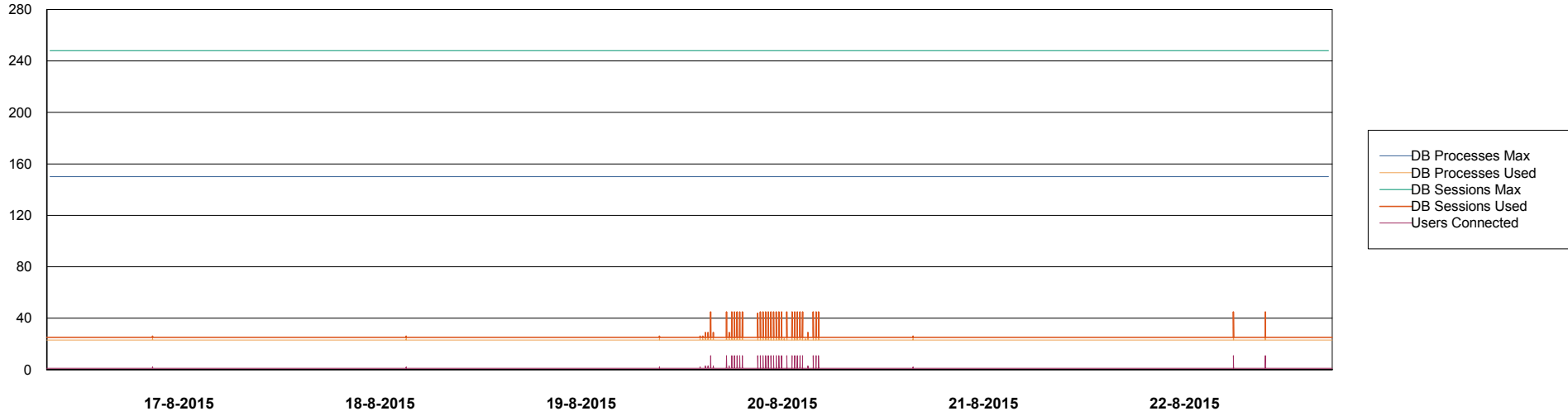


Weekly SLA Customer Report

Customer BOH_Production
Database ID 55



DATABASE PERFORMANCE BOHDB_Standby



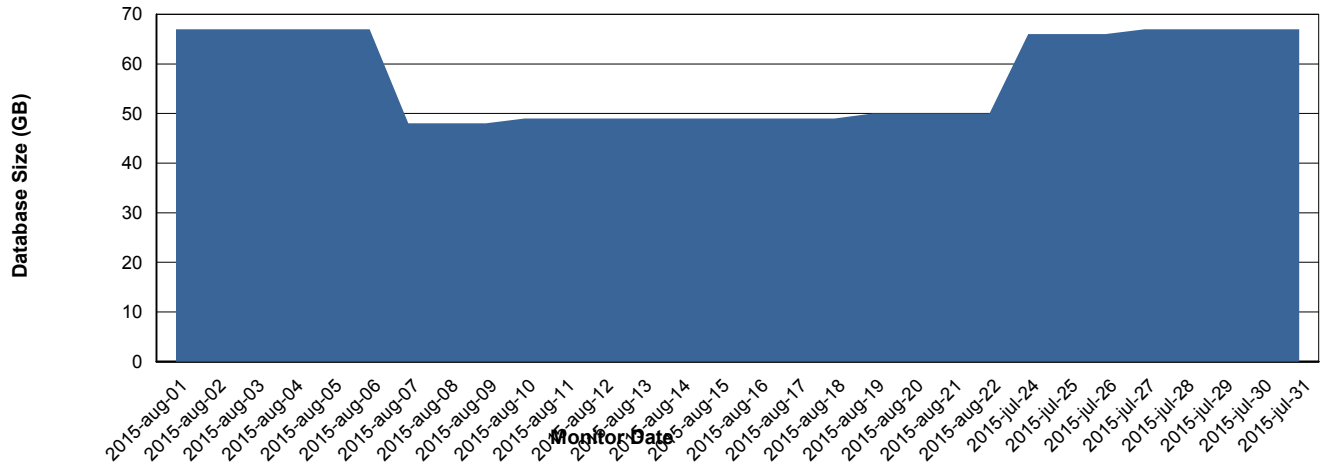
Weekly SLA Customer Report

Customer BOH_Production
 Database ID 55



=====
 DATABASE SIZE BOHDB_Production
 =====

Database growth over last month



=====
 DATABASE TABLESPACES BOHDB_Production
 =====

TOTAL DATABASE SIZE PER TABLESPACE

Date	Tablespace Name	Filesize (Gb)	Usedsize (Gb)	Percentage free
22-8-2015	ABSDATA	33	29	12
	INDX	48	20	58
21-8-2015	ABSDATA	33	29	12
	INDX	48	20	58
20-8-2015	ABSDATA	33	29	12
	INDX	48	20	58
19-8-2015	ABSDATA	33	28	15
	INDX	48	20	58
18-8-2015	ABSDATA	33	28	15
	INDX	48	20	58
17-8-2015	ABSDATA	33	28	15
	INDX	48	20	58
16-8-2015	ABSDATA	33	28	15
	INDX	48	20	58

Weekly SLA Customer Report

Customer BOH_Production
Database ID 55



=====
STANDBY DATABASE HEALTH BOH_Production
=====

Recovery lag for last 7 days

