

# Weekly SLA Customer Report

Customer NIX\_Production  
 Database ID 51



=====  
 HARDDISK USAGE NIX\_PRD\_ABSAPP1  
 =====

	Total disk space on C (GB)	Free disk space on C (GB)
15-8-2015	200	178
14-8-2015	200	178
13-8-2015	200	178
12-8-2015	200	178
11-8-2015	200	178
10-8-2015	200	178
9-8-2015	200	178

=====  
 HARDDISK USAGE NIX\_PRD\_ABSAPP2  
 =====

	Total disk space on C (GB)	Free disk space on C (GB)
15-8-2015	200	178
14-8-2015	200	178
13-8-2015	200	178
12-8-2015	200	178
11-8-2015	200	178
10-8-2015	200	178
9-8-2015	200	178

# Weekly SLA Customer Report

Customer NIX\_Production  
 Database ID 51



=====  
 HARDDISK USAGE NIX\_PRD\_ABSWEB01  
 =====

	Total disk space on C (GB)	Free disk space on C (GB)
15-8-2015	300	283
14-8-2015	300	283
13-8-2015	300	283
12-8-2015	300	283
11-8-2015	300	284
10-8-2015	300	284
9-8-2015	300	284

=====  
 HARDDISK USAGE NIX\_PRD\_ORACLE\_B11  
 =====

	Total disk space on C (GB)	Free disk space on C (GB)	Total disk space on E (GB)	Free disk space on E (GB)	Total disk space on F (GB)	Free disk space on F (GB)	Total disk space on G (GB)	Free disk space on G (GB)
15-8-2015	279	204	558	392	558	457	279	237
14-8-2015	279	204	558	392	558	458	279	237
13-8-2015	279	204	558	392	558	458	279	237
12-8-2015	279	204	558	394	558	458	279	237
11-8-2015	279	204	558	394	558	458	279	237
10-8-2015	279	204	558	394	558	458	279	237
9-8-2015	279	204	558	394	558	458	279	237

# Weekly SLA Customer Report

Customer      NIX\_Production  
 Database ID    51



=====  
 HARDDISK USAGE    NIX\_PRD\_ORCDB1  
 =====

	Total disk space on C (GB)	Free disk space on C (GB)	Total disk space on E (GB)	Free disk space on E (GB)	Total disk space on F (GB)	Free disk space on F (GB)	Total disk space on G (GB)	Free disk space on G (GB)
15-8-2015	279	154	558	498	558	457	279	145
14-8-2015	279	153	558	498	558	457	279	147
13-8-2015	279	154	558	498	558	457	279	149
12-8-2015	279	154	558	498	558	457	279	151
11-8-2015	279	154	558	498	558	457	279	153
10-8-2015	279	154	558	498	558	457	279	156
9-8-2015	279	154	558	498	558	457	279	158

=====  
 HARDDISK USAGE    NIX\_PRD\_ORCDB2  
 =====

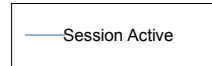
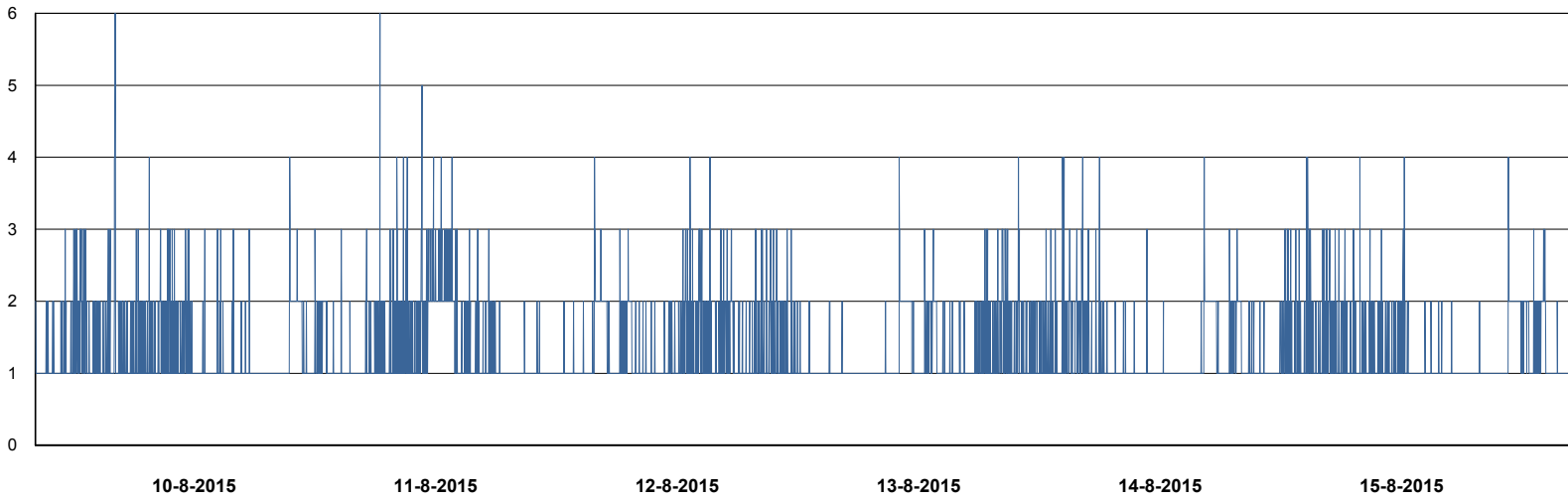
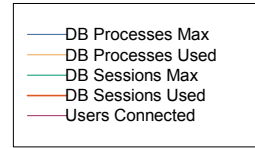
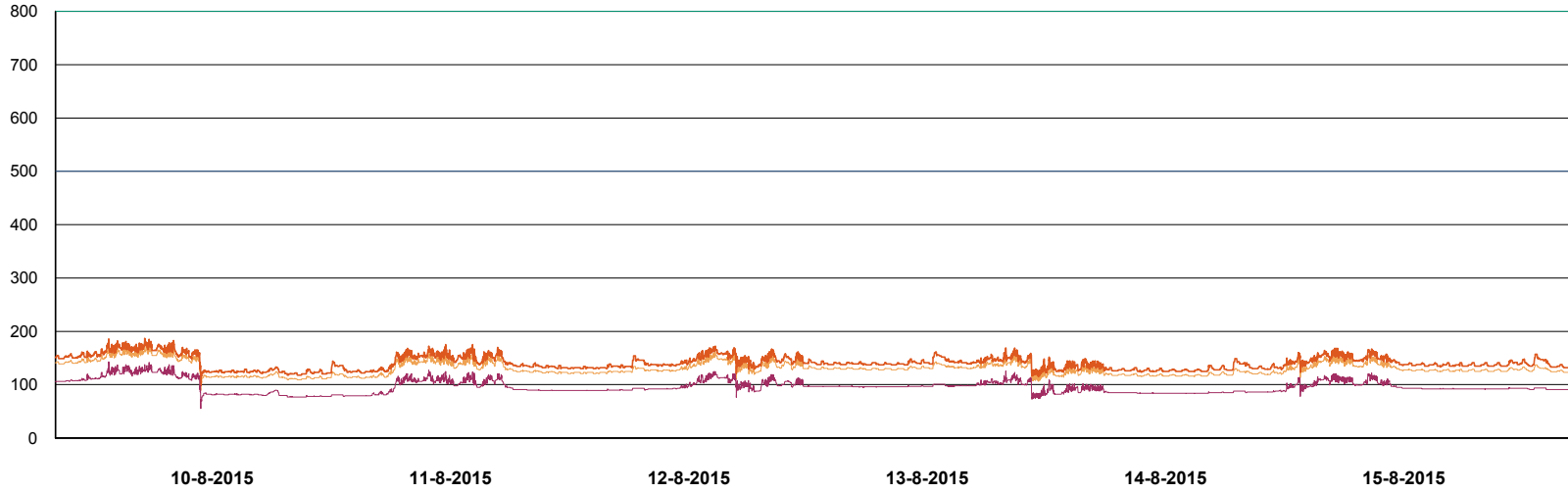
	Total disk space on C (GB)	Free disk space on C (GB)	Total disk space on E (GB)	Free disk space on E (GB)	Total disk space on F (GB)	Free disk space on F (GB)	Total disk space on G (GB)	Free disk space on G (GB)
15-8-2015	279	235	558	404	558	457	279	179
14-8-2015	279	235	558	404	558	457	279	180
13-8-2015	279	235	558	404	558	457	279	183
12-8-2015	279	235	558	404	558	457	279	185
11-8-2015	279	235	558	404	558	457	279	187
10-8-2015	279	235	558	404	558	457	279	190
9-8-2015	279	235	558	404	558	457	279	192

# Weekly SLA Customer Report

Customer NIX\_Production  
Database ID 51



DATABASE PERFORMANCE NIXDB\_Production



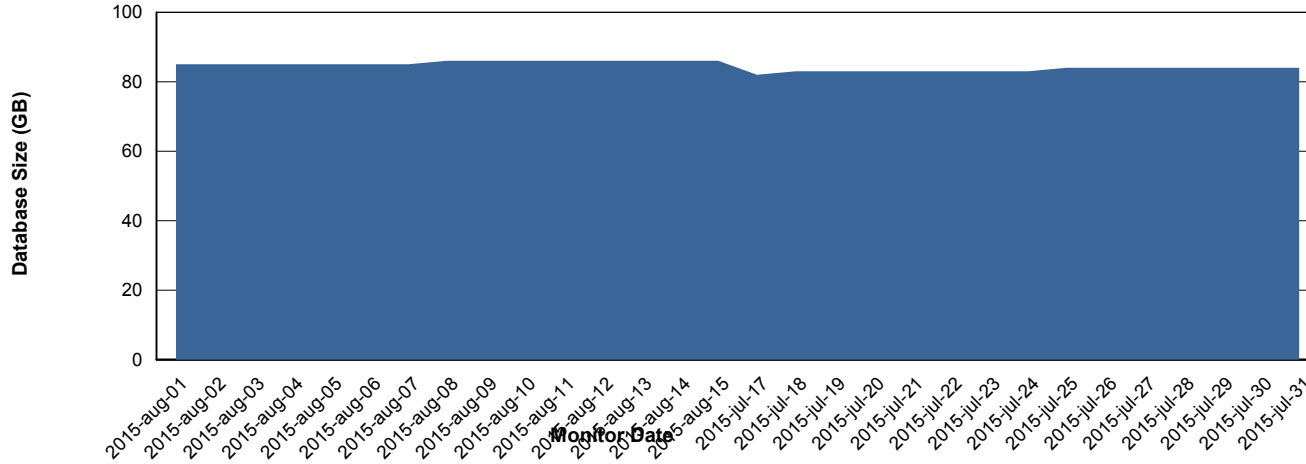
# Weekly SLA Customer Report

Customer NIX\_Production  
 Database ID 51



=====  
 DATABASE SIZE NIXDB\_Production  
 =====

## Database growth over last month



=====  
 DATABASE TABLESPACES NIXDB\_Production  
 =====

### TOTAL DATABASE SIZE PER TABLESPACE

Date	Tablespace Name	Filesize (Gb)	Usedsize (Gb)	Percentage free
15-8-2015	ABSDATA	50	34	32
	INDX	100	51	49
14-8-2015	ABSDATA	50	34	32
	INDX	100	51	49
13-8-2015	ABSDATA	50	34	32
	INDX	100	51	49
12-8-2015	ABSDATA	50	34	32
	INDX	100	51	49
11-8-2015	ABSDATA	50	34	32
	INDX	100	51	49
10-8-2015	ABSDATA	50	34	32
	INDX	100	51	49
9-8-2015	ABSDATA	50	34	32
	INDX	100	51	49

# Weekly SLA Customer Report

---

Customer NIX\_Production  
Database ID 51



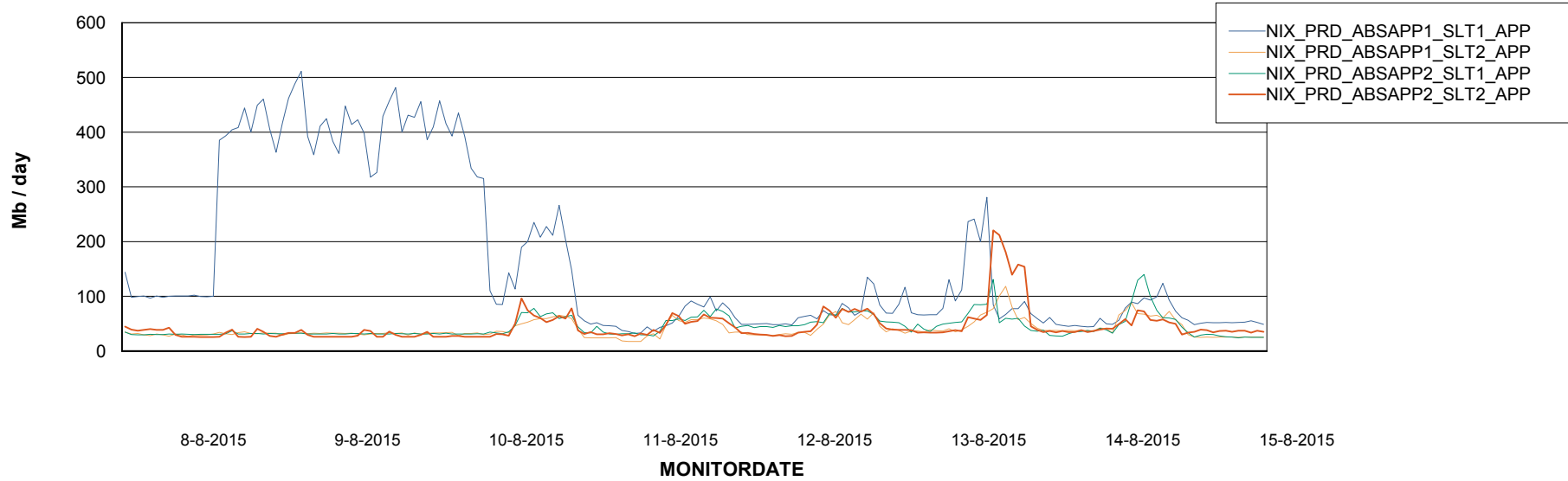
# Weekly SLA Customer Report

Customer NIX\_Production  
Database ID 51



=====  
ABSolute Application Server Services  
=====

## Avg memory used per ABS Server Service



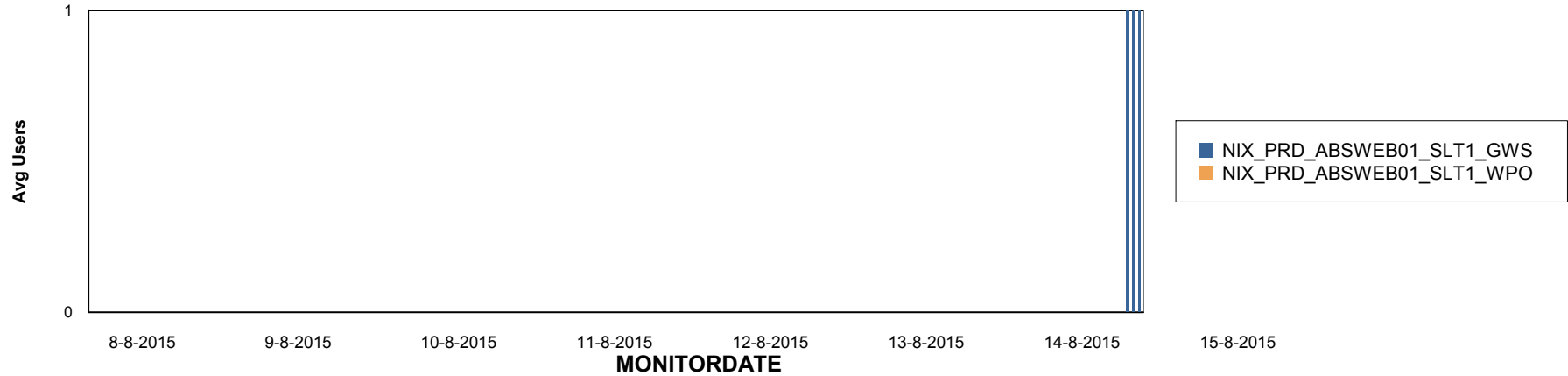
# Weekly SLA Customer Report

Customer NIX\_Production  
Database ID 51

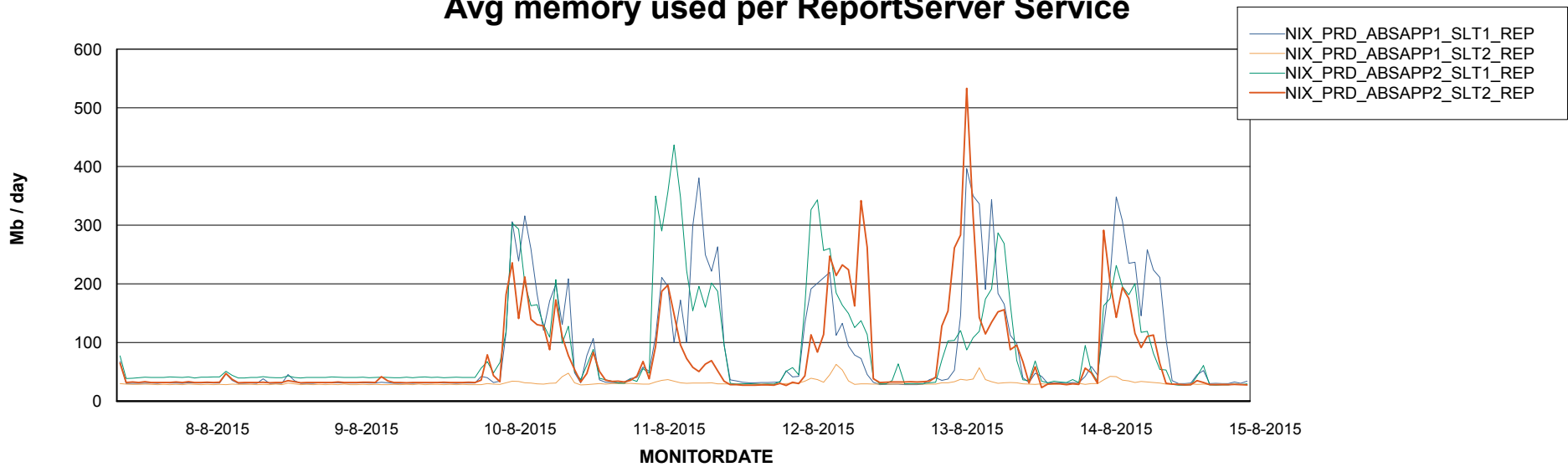


=====  
ABSolute Application ReportServer Services  
=====

## Disaster per ReportServer



## Avg memory used per ReportServer Service



# Weekly SLA Customer Report

Customer NIX\_Production  
Database ID 51



## Disaster per ABS component

