

Weekly SLA Customer Report

Customer JWR Production
Database ID 43



=====
HARDDISK USAGE JWR_PRD_JWR-ABS-01
=====

	Used disk space on / (GB)	Total disk space on / (GB)	Free disk space on / (GB)
15-8-2015	29	49	18
14-8-2015	29	49	18
13-8-2015	29	49	18
12-8-2015	30	49	17
11-8-2015	30	49	17
10-8-2015	28	49	18
9-8-2015	27	49	19

=====
HARDDISK USAGE JWR_PRD_JWR-ABS-02
=====

	Used disk space on / (GB)	Total disk space on / (GB)	Free disk space on / (GB)
15-8-2015	32	49	15
14-8-2015	32	49	15
13-8-2015	32	49	15
12-8-2015	33	49	14
11-8-2015	31	49	15
10-8-2015	31	49	15
9-8-2015	31	49	15

Weekly SLA Customer Report

Customer JWR Production
 Database ID 43



=====
 HARDDISK USAGE JWR_PRD_JWR-ODB-01
 =====

	Used disk space on / (GB)	Total disk space on / (GB)	Free disk space on / (GB)
15-8-2015	95	148	45
14-8-2015	96	148	45
13-8-2015	96	148	45
12-8-2015	96	148	45
11-8-2015	96	148	45
10-8-2015	96	148	44
9-8-2015	96	148	45

=====
 HARDDISK USAGE JWR_PRD_JWR-ODB-02
 =====

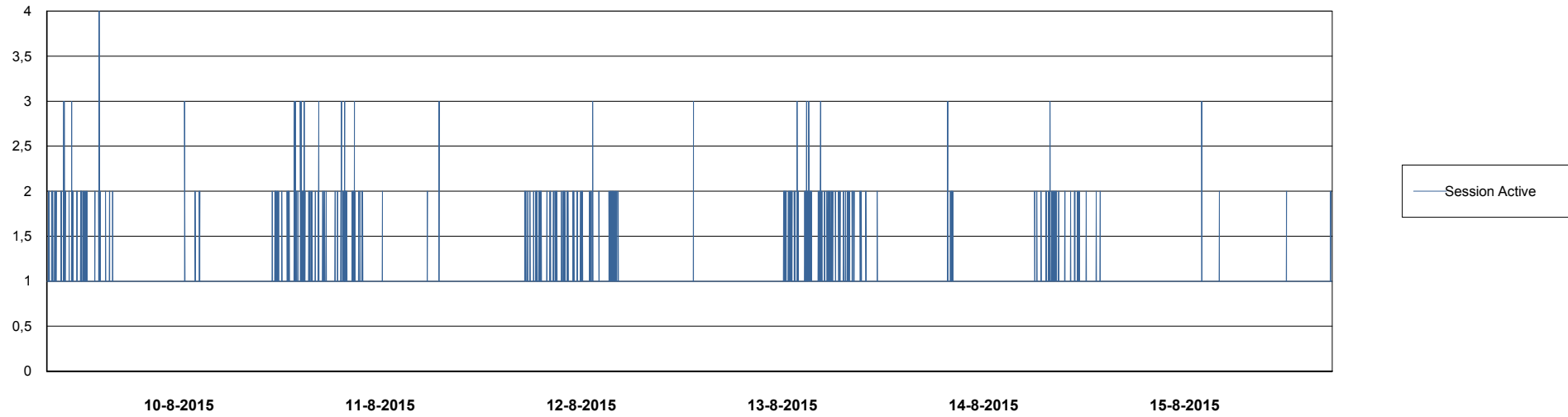
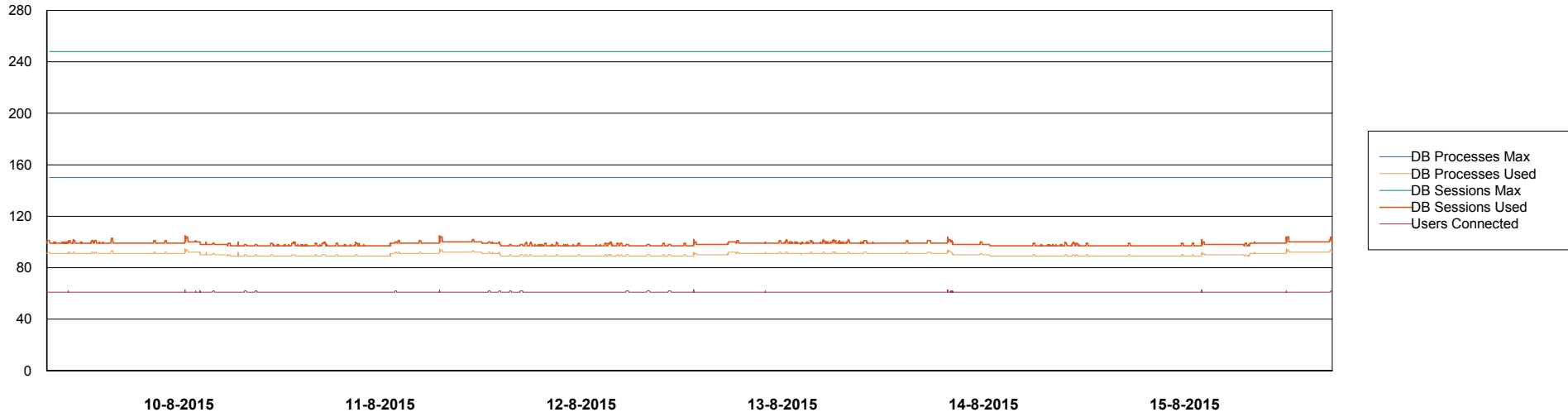
	Used disk space on / (GB)	Total disk space on / (GB)	Free disk space on / (GB)
15-8-2015	95	138	36
14-8-2015	95	138	35
13-8-2015	96	138	35
12-8-2015	96	138	35
11-8-2015	96	138	35
10-8-2015	96	138	35
9-8-2015	96	138	35

Weekly SLA Customer Report

Customer JWR Production
Database ID 43



DATABASE PERFORMANCE JWRDB_Production



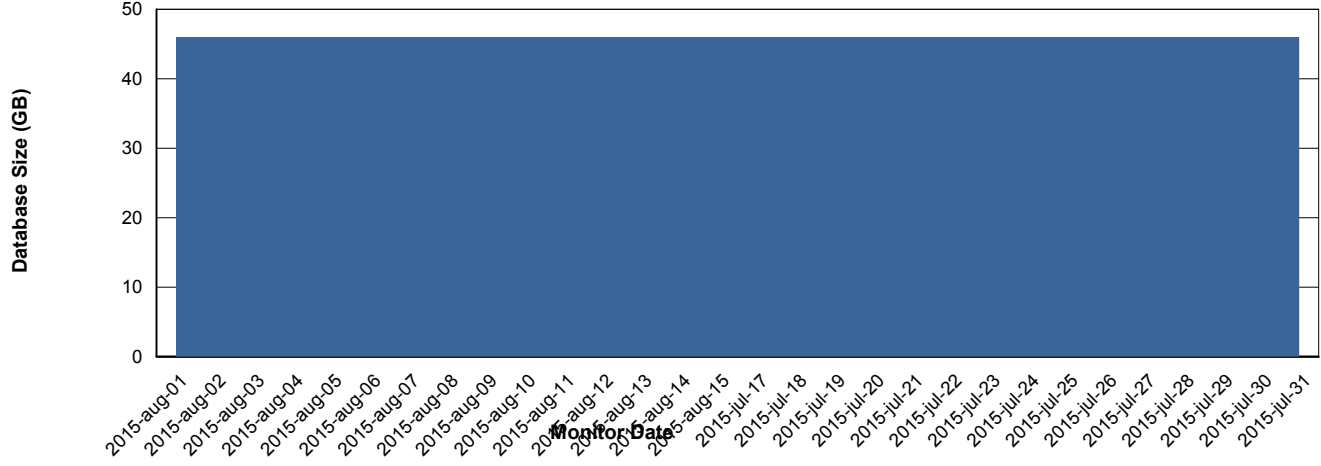
Weekly SLA Customer Report

Customer JWR Production
 Database ID 43



=====
 DATABASE SIZE JWRDB_Production
 =====

Database growth over last month



=====
 DATABASE TABLESPACES JWRDB_Production
 =====

TOTAL DATABASE SIZE PER TABLESPACE

Date	Tablespace Name	Filesize (Gb)	Usedsize (Gb)	Percentage free
15-8-2015	ABSDATA	18	13	28
	INDX	38	32	16
14-8-2015	ABSDATA	18	13	28
	INDX	38	32	16
13-8-2015	ABSDATA	18	13	28
	INDX	38	32	16
12-8-2015	ABSDATA	18	13	28
	INDX	38	32	16
11-8-2015	ABSDATA	18	13	28
	INDX	38	32	16
10-8-2015	ABSDATA	18	13	28
	INDX	38	32	16
9-8-2015	ABSDATA	18	13	28
	INDX	38	32	16

Weekly SLA Customer Report

Customer JWR Production
Database ID 43



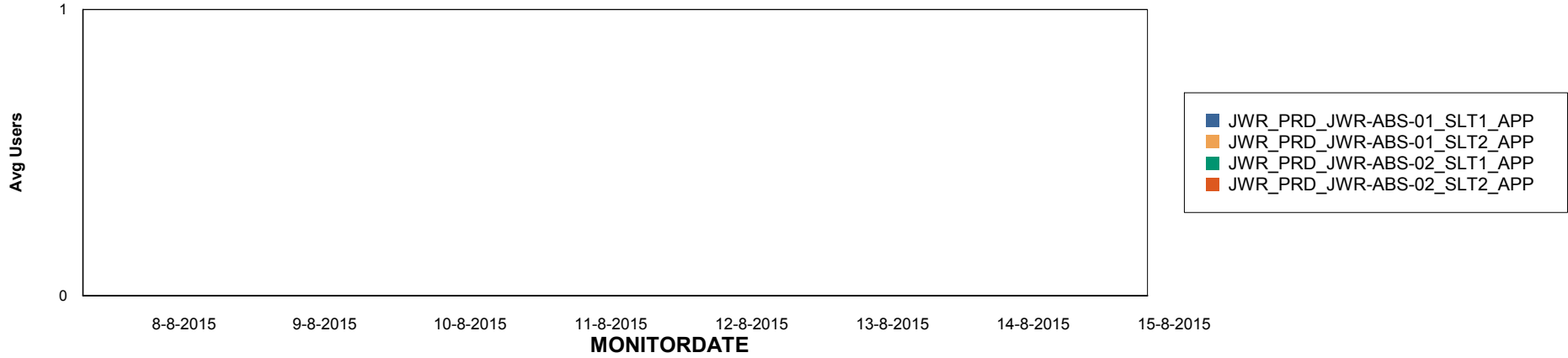
Weekly SLA Customer Report

Customer JWR Production
Database ID 43

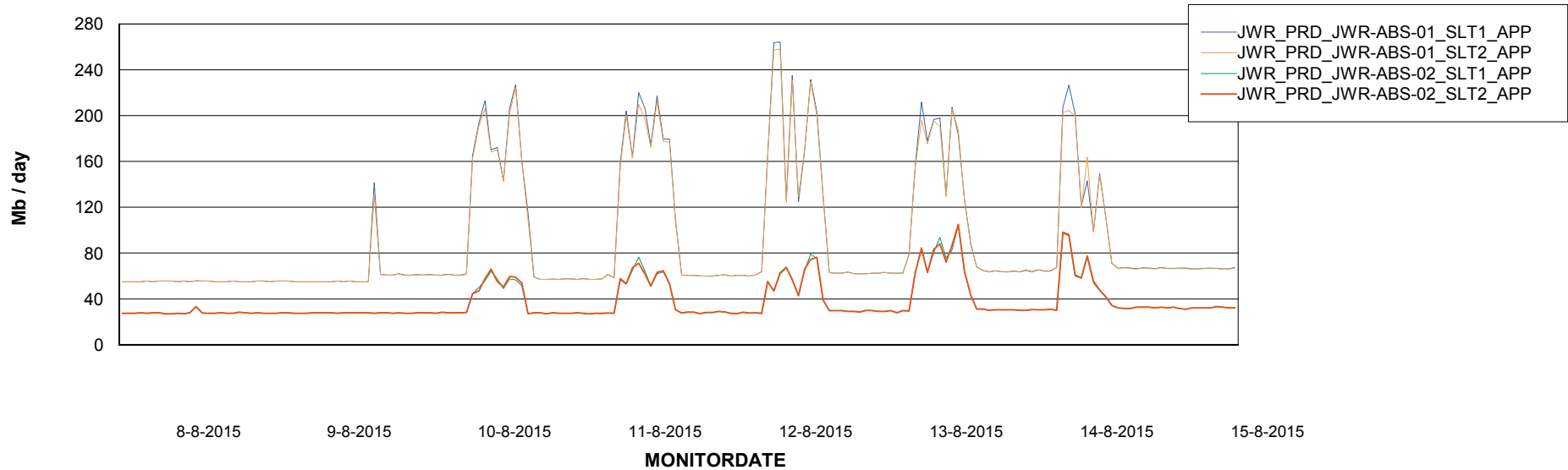


=====
ABSolute Application Server Services
=====

Disaster per ABS Server



Avg memory used per ABS Server Service



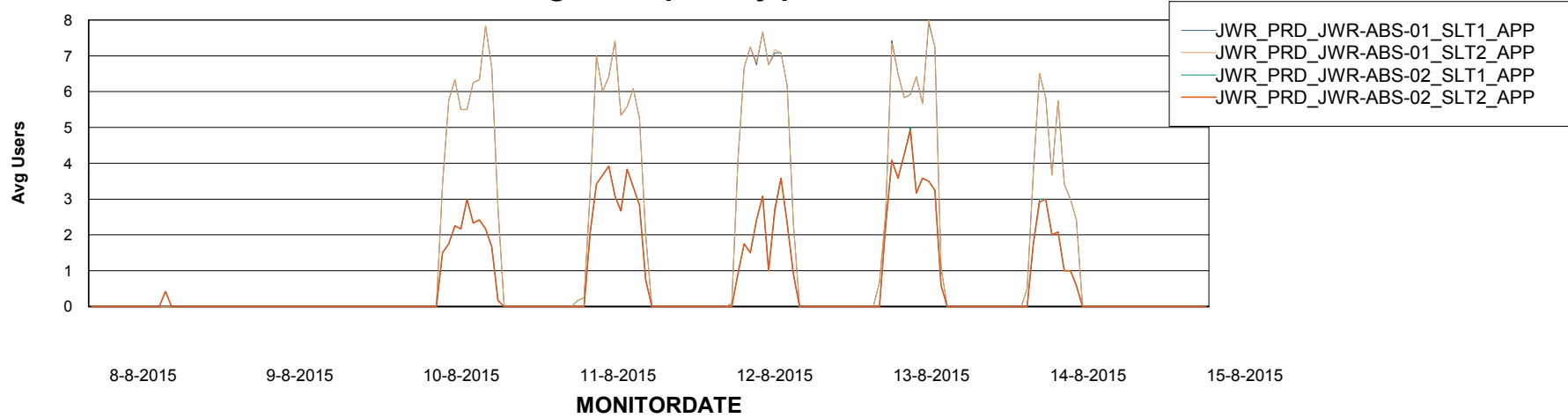
Weekly SLA Customer Report

Customer JWR Production
Database ID 43



=====
ABSolute Application Server Services
=====

Avg users per day per ABS server



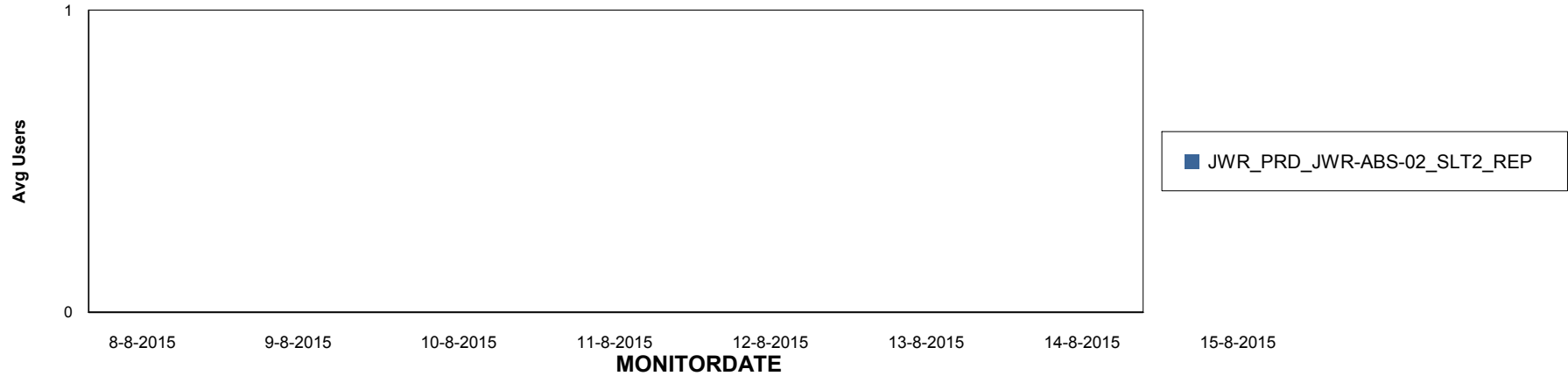
Weekly SLA Customer Report

Customer JWR Production
Database ID 43

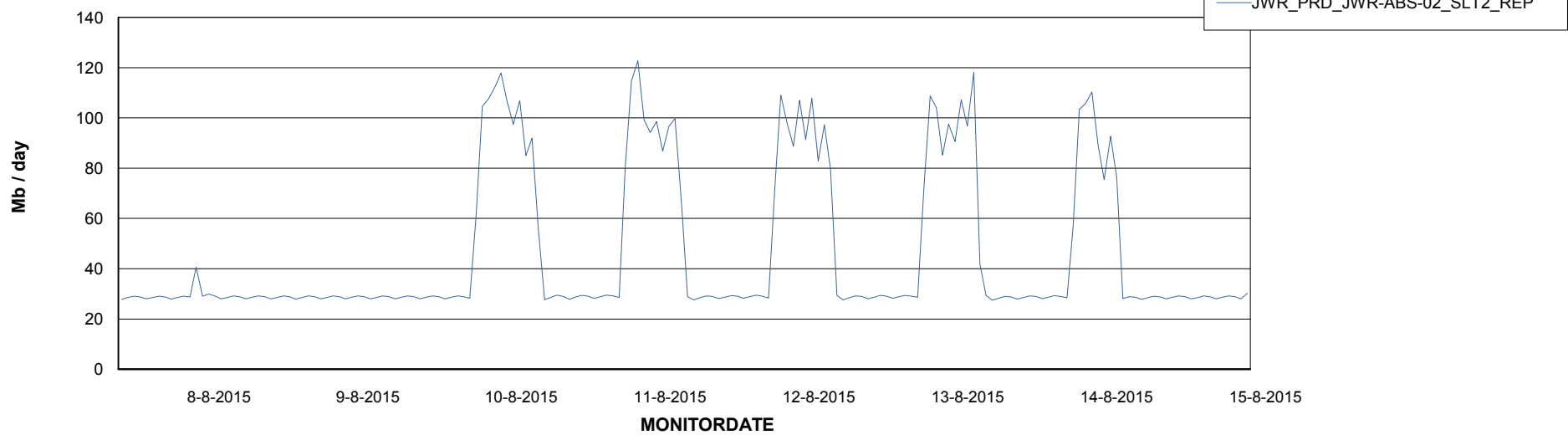


=====
ABSolute Application ReportServer Services
=====

Disaster per ReportServer



Avg memory used per ReportServer Service



Weekly SLA Customer Report

Customer JWR Production
Database ID 43



Disaster per ABS component

