

Weekly SLA Customer Report

Customer DFD Production
 Database ID 39



=====
 HARDDISK USAGE DFD_PRD_ABSWEB
 =====

	Total disk space on C (GB)	Free disk space on C (GB)
15-8-2015	60	23
14-8-2015	60	23
13-8-2015	60	23
12-8-2015	60	23
11-8-2015	60	24
10-8-2015	60	24
9-8-2015	60	24

=====
 HARDDISK USAGE DFD_PRD_BI1
 =====

	Total disk space on C (GB)	Free disk space on C (GB)	Total disk space on E (GB)	Free disk space on E (GB)
15-8-2015	40	11	100	35
14-8-2015	40	11	100	35
13-8-2015	40	11	100	35
12-8-2015	40	11	100	35
11-8-2015	40	11	100	35
10-8-2015	40	11	100	35
9-8-2015	40	11	100	35

Weekly SLA Customer Report

Customer DFD Production
 Database ID 39



=====
 HARDDISK USAGE DFD_PRD_ORACLE1
 =====

	Total disk space on C (GB)	Free disk space on C (GB)	Total disk space on D (GB)	Free disk space on D (GB)	Total disk space on E (GB)	Free disk space on E (GB)	Total disk space on F (GB)	Free disk space on F (GB)
15-8-2015	78	54	479	356	400	278	800	735
14-8-2015	78	54	479	356	400	280	800	735
13-8-2015	78	54	479	356	400	284	800	735
12-8-2015	78	54	479	356	400	288	800	736
11-8-2015	78	54	479	356	400	291	800	736
10-8-2015	78	54	479	356	400	295	800	739
9-8-2015	78	54	479	356	400	296	800	740

=====
 HARDDISK USAGE DFD_PRD_ORACLE2
 =====

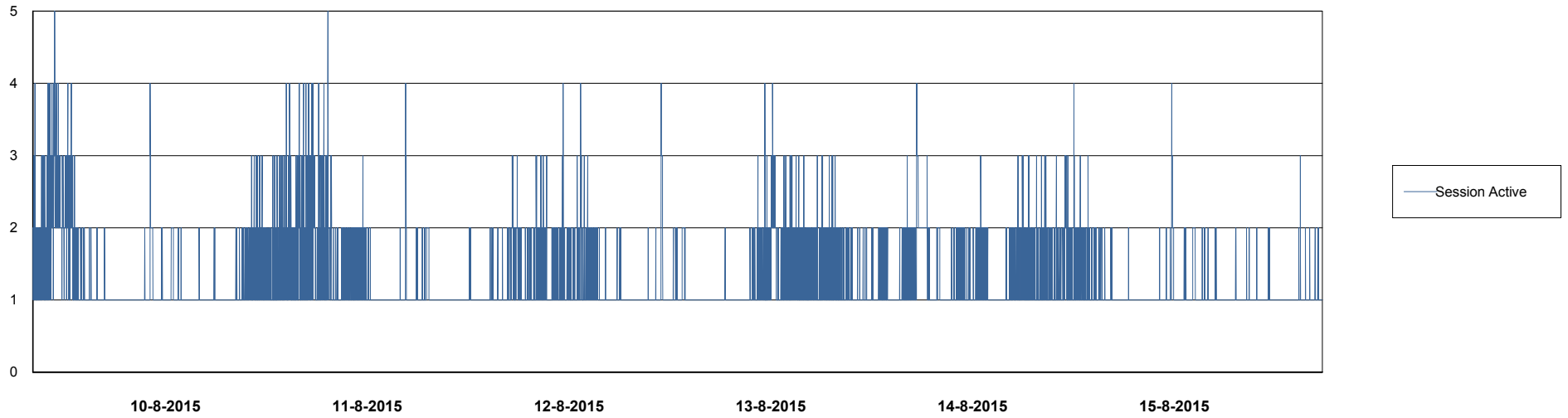
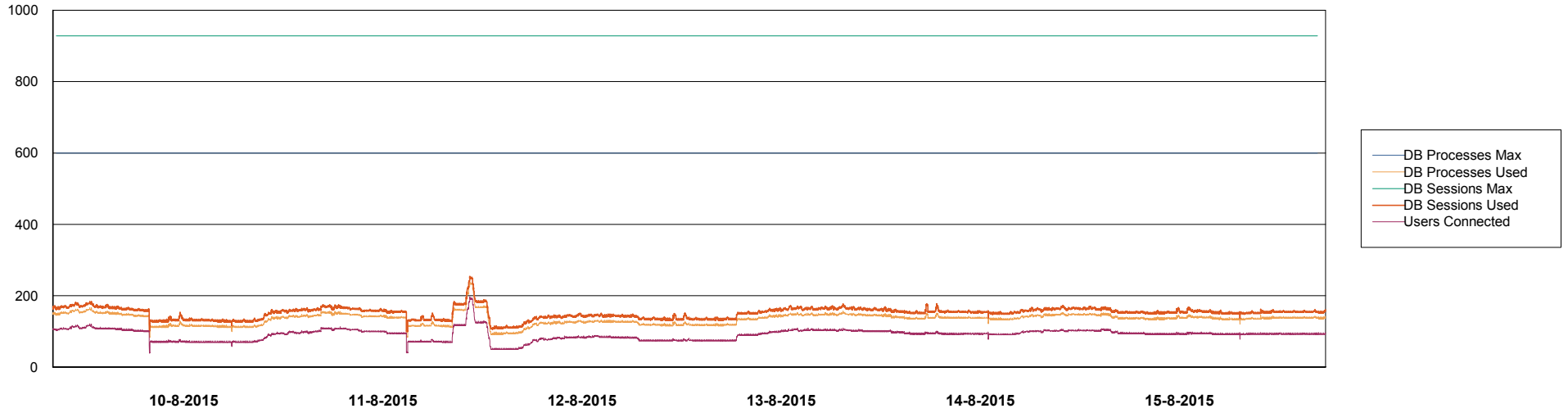
	Total disk space on C (GB)	Free disk space on C (GB)	Total disk space on D (GB)	Free disk space on D (GB)	Total disk space on E (GB)	Free disk space on E (GB)	Total disk space on F (GB)	Free disk space on F (GB)
15-8-2015	78	58	479	343	400	102	800	690
14-8-2015	78	58	479	343	400	104	800	690
13-8-2015	78	58	479	343	400	108	800	690
12-8-2015	78	58	479	343	400	111	800	690
11-8-2015	78	58	479	343	400	113	800	690
10-8-2015	78	58	479	343	400	116	800	693
9-8-2015	78	58	479	343	400	118	800	695

Weekly SLA Customer Report

Customer DFD Production
Database ID 39



DATABASE PERFORMANCE DFDDB_Production

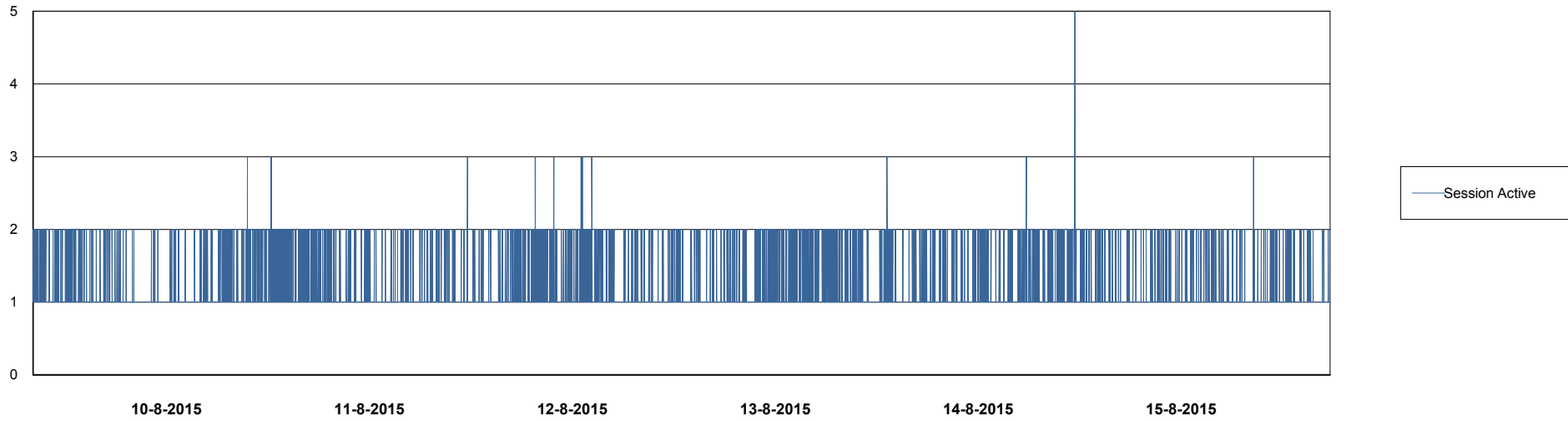
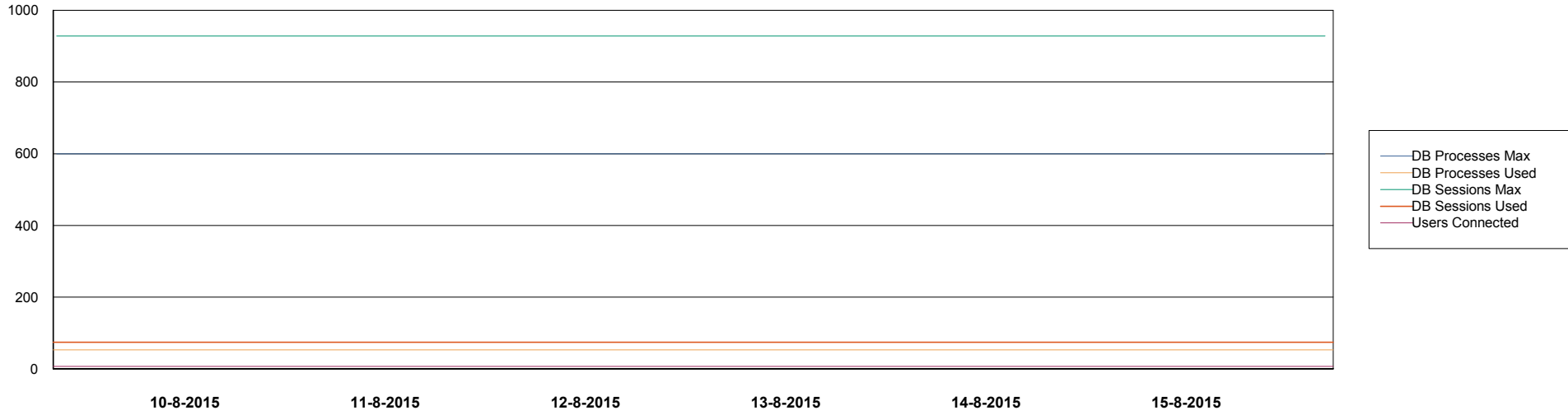


Weekly SLA Customer Report

Customer DFD Production
Database ID 39



DATABASE PERFORMANCE DFDDB_Standby

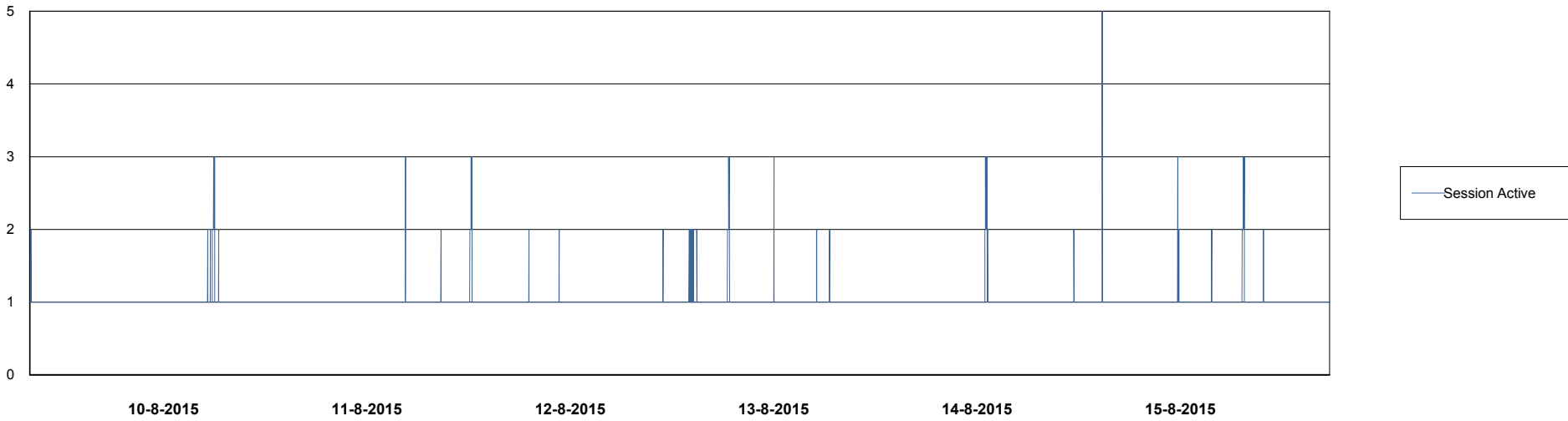
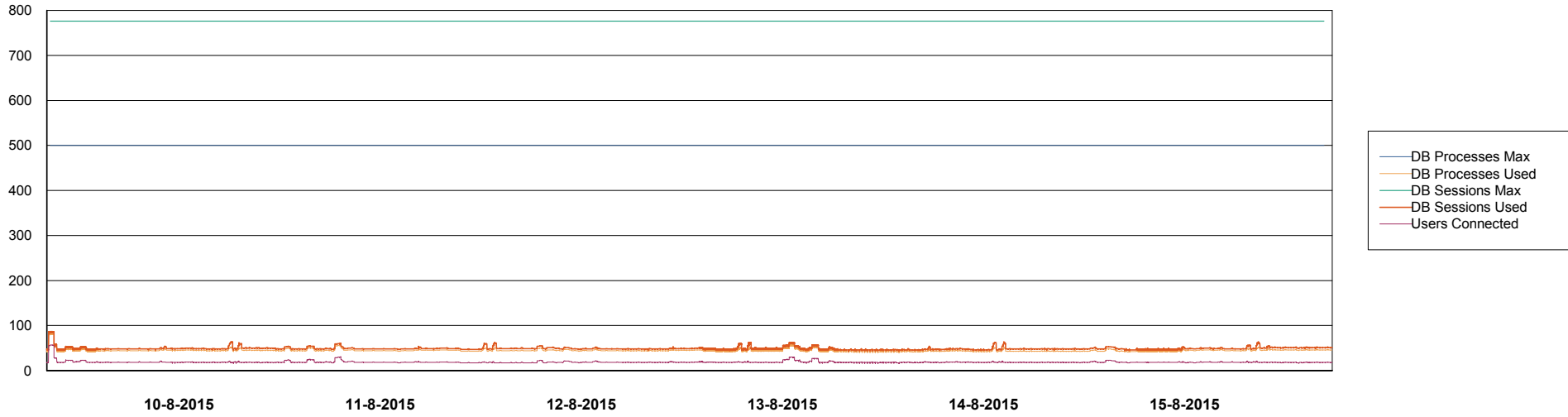


Weekly SLA Customer Report

Customer DFD Production
Database ID 39



DATABASE PERFORMANCE DFDDDBI_Production



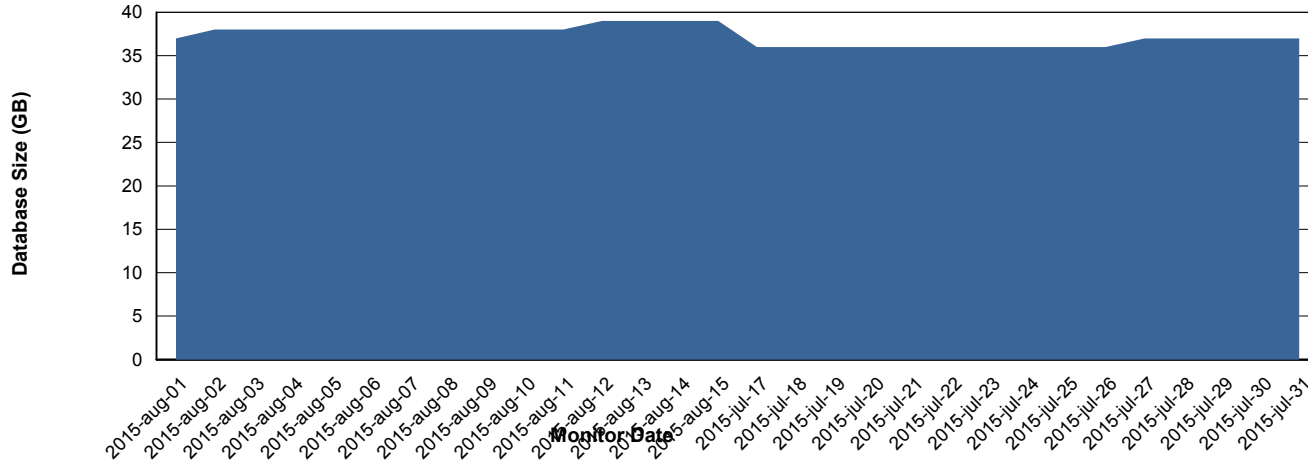
Weekly SLA Customer Report

Customer DFD Production
Database ID 39



=====
DATABASE SIZE DFDDDB_Production
=====

Database growth over last month



Weekly SLA Customer Report

Customer DFD Production
 Database ID 39



=====
 DATABASE TABLESPACES DFDDDB_Production
 =====

TOTAL DATABASE SIZE PER TABLESPACE

Date	Tablespace Name	Filesize (Gb)	Usedsize (Gb)	Percentage free
15-8-2015	ABSDATA	17	13	24
	INDX	31	24	23
14-8-2015	ABSDATA	17	13	24
	INDX	31	24	23
13-8-2015	ABSDATA	17	13	24
	INDX	31	24	23
12-8-2015	ABSDATA	17	13	24
	INDX	31	24	23
11-8-2015	ABSDATA	17	13	24
	INDX	31	24	23
10-8-2015	ABSDATA	17	13	24
	INDX	31	24	23
9-8-2015	ABSDATA	17	13	24
	INDX	27	23	15

Weekly SLA Customer Report

Customer DFD Production
 Database ID 39



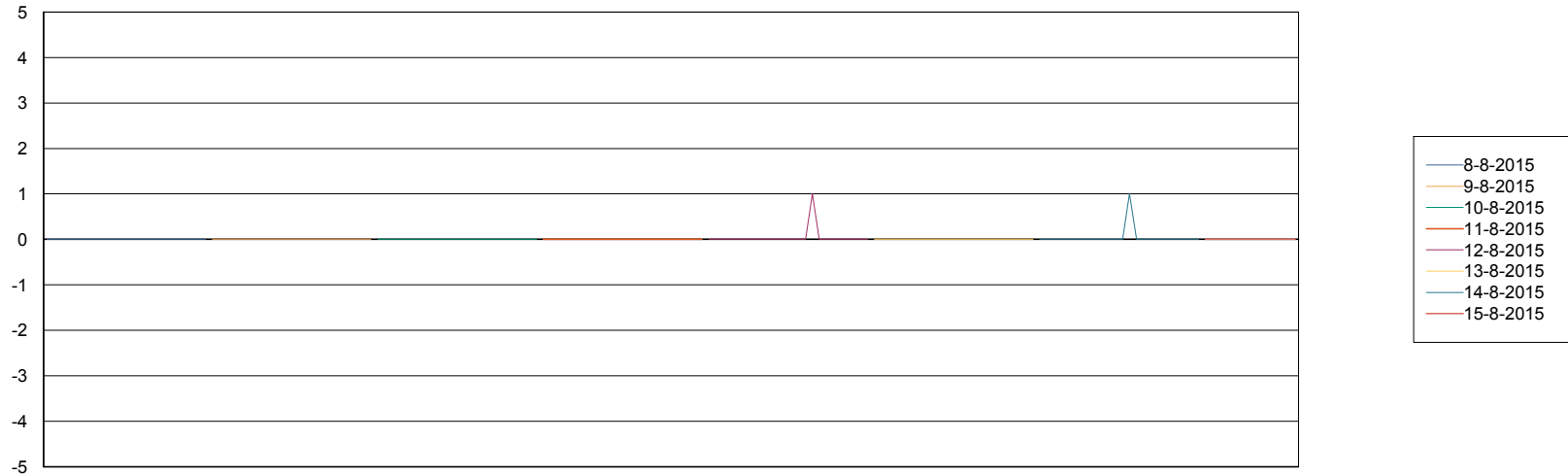
=====
 DATABASE TABLESPACES DFDDDBI_Production
 =====

TOTAL DATABASE SIZE PER TABLESPACE

Date	Tablespace Name	Filesize (Gb)	Usedsize (Gb)	Percentage free
15-8-2015	ABSDATA	10	5	50
	INDX	20	7	65
14-8-2015	ABSDATA	10	5	50
	INDX	20	7	65
13-8-2015	ABSDATA	10	5	50
	INDX	20	7	65
12-8-2015	ABSDATA	10	5	50
	INDX	20	7	65
11-8-2015	ABSDATA	10	5	50
	INDX	20	7	65
10-8-2015	ABSDATA	10	5	50
	INDX	20	7	65
9-8-2015	ABSDATA	10	5	50
	INDX	20	7	65

=====
 STANDBY DATABASE HEALTH DFD Production
 =====

Recovery lag for last 7 days



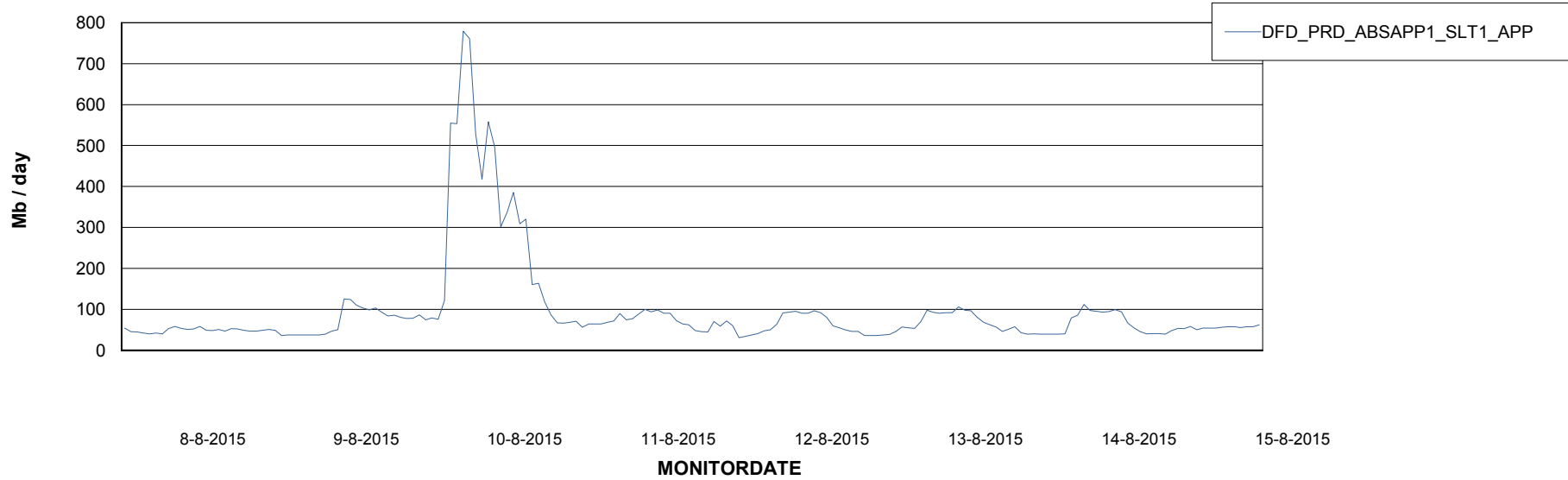
Weekly SLA Customer Report

Customer DFD Production
Database ID 39



=====
ABSolute Application Server Services
=====

Avg memory used per ABS Server Service



Weekly SLA Customer Report

Customer DFD Production
Database ID 39



=====
ABSolute Application ReportServer Services
=====

Avg memory used per ReportServer Service

