

# Weekly SLA Customer Report

Customer NIX\_Production  
Database ID 51



=====  
HARDDISK USAGE NIX\_PRD\_ABSAPP1  
=====

	Total disk space on C (GB)	Free disk space on C (GB)
8-8-2015	200	178
7-8-2015	200	178
6-8-2015	200	178
5-8-2015	200	178
4-8-2015	200	178
3-8-2015	200	178
2-8-2015	200	179

=====  
HARDDISK USAGE NIX\_PRD\_ABSAPP2  
=====

	Total disk space on C (GB)	Free disk space on C (GB)
8-8-2015	200	178
7-8-2015	200	178
6-8-2015	200	178
5-8-2015	200	178
4-8-2015	200	178
3-8-2015	200	178
2-8-2015	200	179

# Weekly SLA Customer Report

Customer NIX\_Production  
 Database ID 51



=====  
 HARDDISK USAGE NIX\_PRD\_ABSWEB01  
 =====

	Total disk space on C (GB)	Free disk space on C (GB)
8-8-2015	300	284
7-8-2015	300	284
6-8-2015	300	284
5-8-2015	300	284
4-8-2015	300	284
3-8-2015	300	284
2-8-2015	300	284

=====  
 HARDDISK USAGE NIX\_PRD\_ORACLE\_B11  
 =====

	Total disk space on C (GB)	Free disk space on C (GB)	Total disk space on E (GB)	Free disk space on E (GB)	Total disk space on F (GB)	Free disk space on F (GB)	Total disk space on G (GB)	Free disk space on G (GB)
8-8-2015	279	204	558	394	558	457	279	237
7-8-2015	279	204	558	395	558	458	279	237
6-8-2015	279	204	558	398	558	458	279	237
5-8-2015	279	204	558	399	558	458	279	237
4-8-2015	279	204	558	399	558	458	279	237
3-8-2015	279	204	558	399	558	458	279	237
2-8-2015	279	204	558	399	558	458	279	238

## Weekly SLA Customer Report

Customer      NIX\_Production  
 Database ID    51



=====  
 HARDDISK USAGE    NIX\_PRD\_ORCDB1  
 =====

	Total disk space on C (GB)	Free disk space on C (GB)	Total disk space on E (GB)	Free disk space on E (GB)	Total disk space on F (GB)	Free disk space on F (GB)	Total disk space on G (GB)	Free disk space on G (GB)
8-8-2015	279	154	558	498	558	457	279	159
7-8-2015	279	154	558	498	558	457	279	160
6-8-2015	279	154	558	498	558	457	279	162
5-8-2015	279	154	558	498	558	457	279	164
4-8-2015	279	154	558	493	558	449	279	167
3-8-2015	279	154	558	493	558	451	279	169
2-8-2015	279	154	558	493	558	452	279	172

=====  
 HARDDISK USAGE    NIX\_PRD\_ORCDB2  
 =====

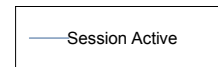
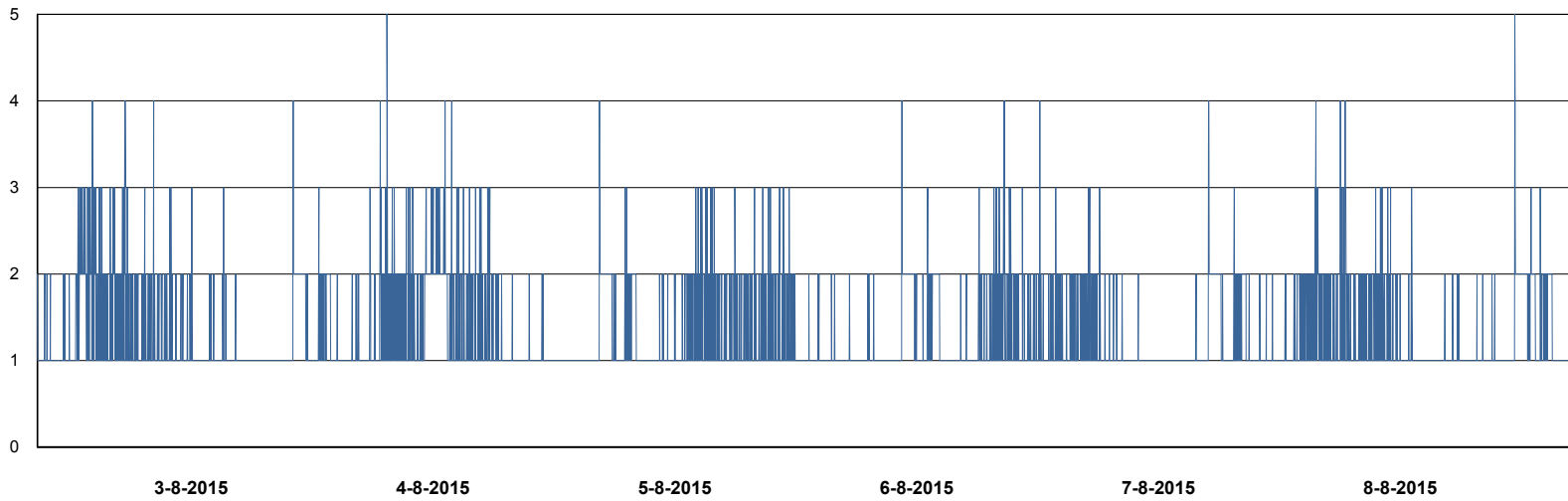
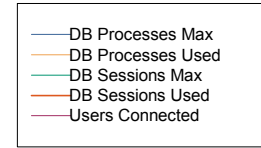
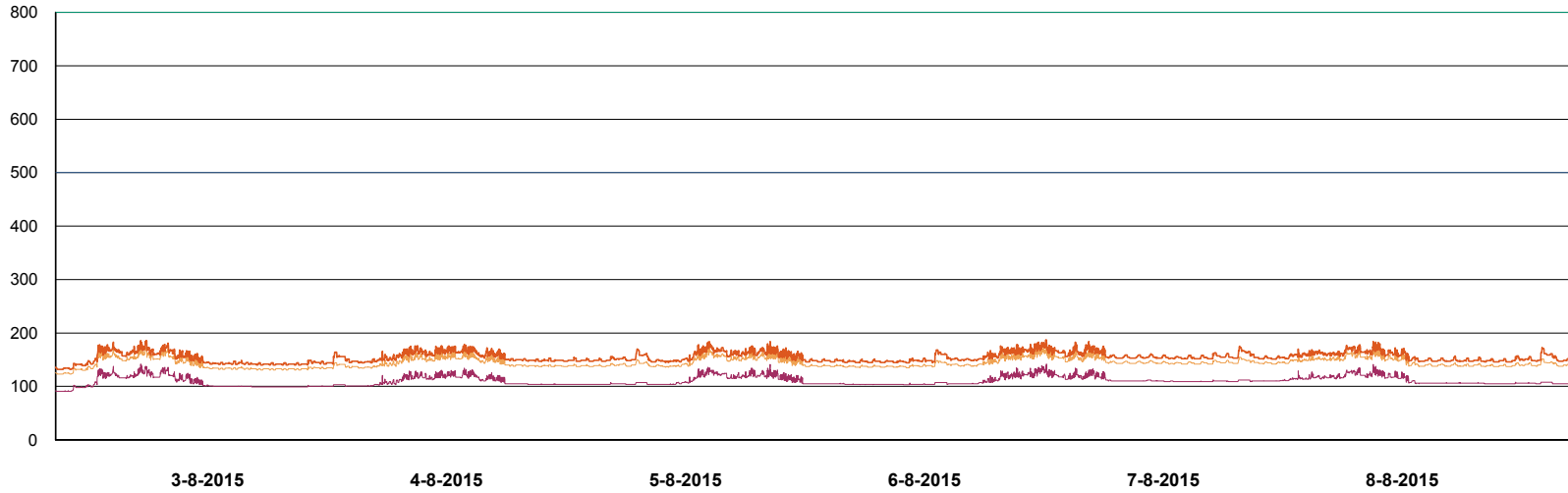
	Total disk space on C (GB)	Free disk space on C (GB)	Total disk space on E (GB)	Free disk space on E (GB)	Total disk space on F (GB)	Free disk space on F (GB)	Total disk space on G (GB)	Free disk space on G (GB)
8-8-2015	279	235	558	404	558	457	279	192
7-8-2015	279	235	558	404	558	458	279	194
6-8-2015	279	235	558	404	558	458	279	196
5-8-2015	279	235	558	404	558	458	279	198
4-8-2015	279	235	558	404	558	458	279	200
3-8-2015	279	235	558	404	558	458	279	202
2-8-2015	279	235	558	404	558	458	279	205

# Weekly SLA Customer Report

Customer NIX\_Production  
Database ID 51



DATABASE PERFORMANCE NIXDB\_Production



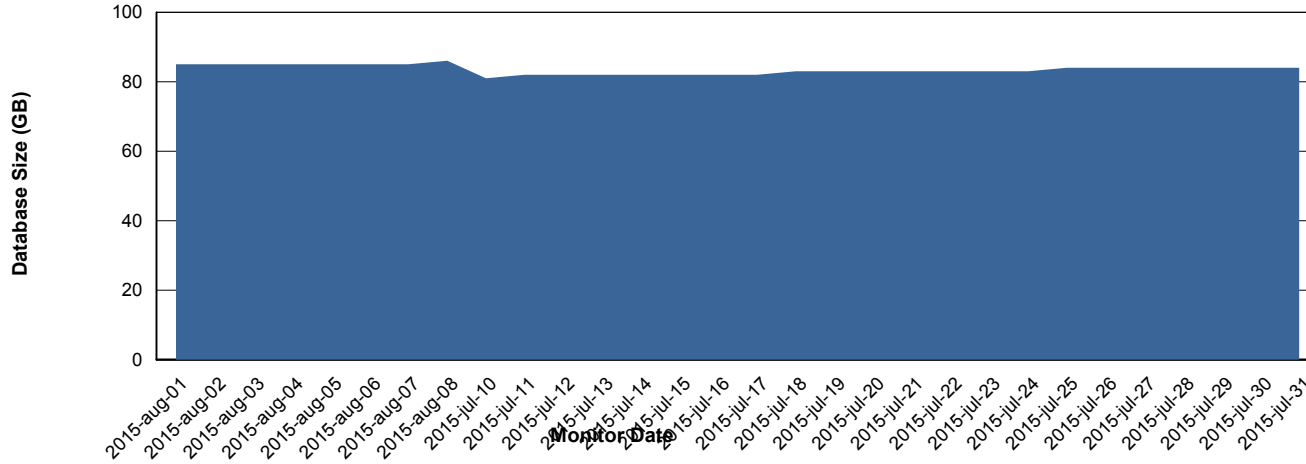
# Weekly SLA Customer Report

Customer NIX\_Production  
 Database ID 51



=====  
 DATABASE SIZE NIXDB\_Production  
 =====

## Database growth over last month



=====  
 DATABASE TABLESPACES NIXDB\_Production  
 =====

### TOTAL DATABASE SIZE PER TABLESPACE

Date	Tablespace Name	Filesize (Gb)	Usedsize (Gb)	Percentage free
8-8-2015	ABSDATA	50	34	32
	INDX	100	51	49
7-8-2015	ABSDATA	50	34	32
	INDX	100	51	49
6-8-2015	ABSDATA	50	34	32
	INDX	100	50	50
5-8-2015	ABSDATA	50	34	32
	INDX	100	50	50
4-8-2015	ABSDATA	50	33	34
	INDX	100	50	50
3-8-2015	ABSDATA	50	33	34
	INDX	100	50	50
2-8-2015	ABSDATA	50	33	34
	INDX	100	50	50

# Weekly SLA Customer Report

---

Customer     NIX\_Production  
Database ID   51



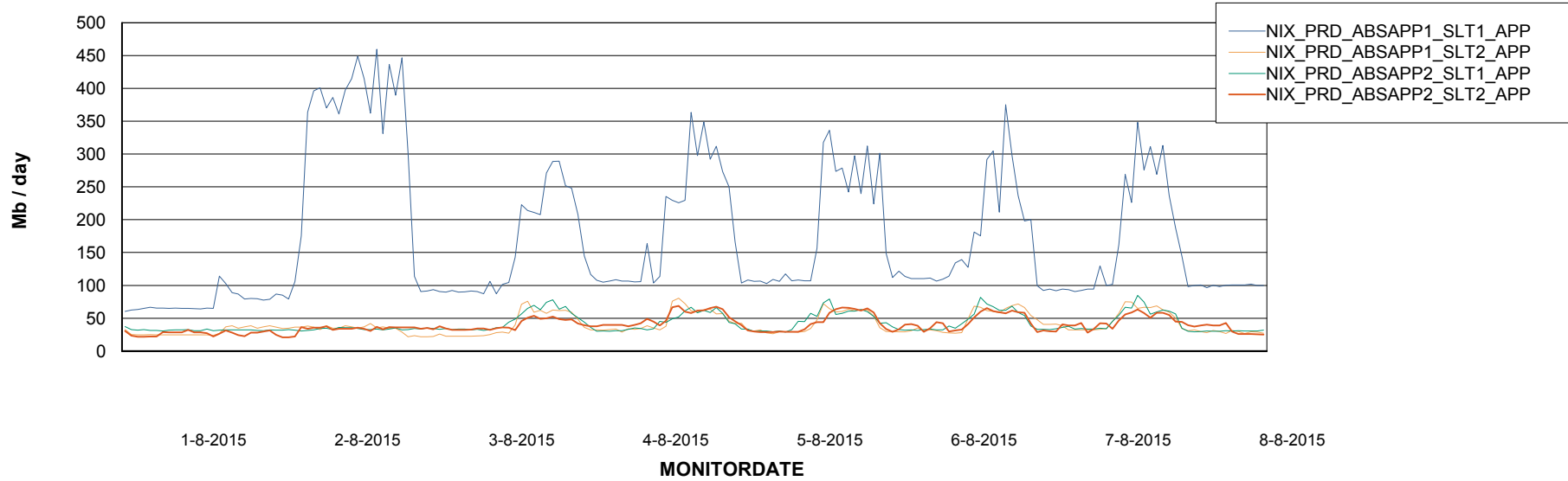
# Weekly SLA Customer Report

Customer NIX\_Production  
Database ID 51



=====  
ABSolute Application Server Services  
=====

## Avg memory used per ABS Server Service



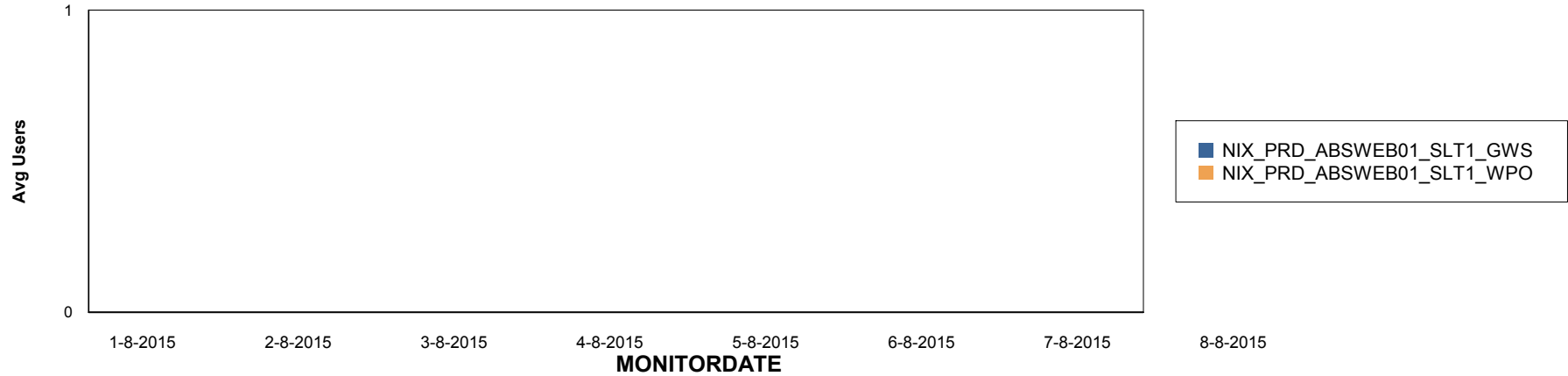
# Weekly SLA Customer Report

Customer NIX\_Production  
Database ID 51

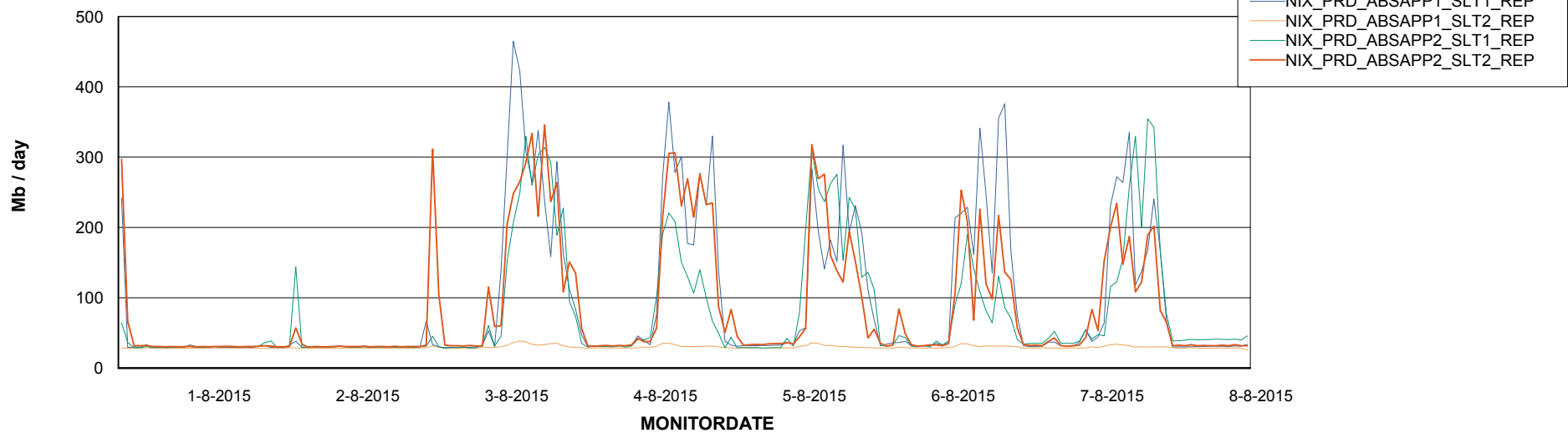


=====  
ABSolute Application ReportServer Services  
=====

## Disaster per ReportServer



## Avg memory used per ReportServer Service



# Weekly SLA Customer Report

Customer NIX\_Production  
Database ID 51



## Disaster per ABS component

