

Weekly SLA Customer Report

Customer CSC_Production
 Database ID 50



=====
 HARDDISK USAGE CSC_PRD_ABSSRV
 =====

	Total disk space on C (GB)	Free disk space on C (GB)	Total disk space on D (GB)	Free disk space on D (GB)	Total disk space on E (GB)	Free disk space on E (GB)
8-8-2015	102	54	220	134	325	74
7-8-2015	102	54	220	133	325	74
6-8-2015	102	54	220	134	325	76
5-8-2015	102	54	220	134	325	80
4-8-2015	102	54	220	134	325	83
3-8-2015	102	55	220	134	325	87
2-8-2015	102	55	220	134	325	90

=====
 HARDDISK USAGE CSC_PRD_ABS01
 =====

	Total disk space on C (GB)	Free disk space on C (GB)	Total disk space on D (GB)	Free disk space on D (GB)	Total disk space on E (GB)	Free disk space on E (GB)
8-8-2015	110	30	210	115	500	192
7-8-2015	110	30	210	115	500	184
6-8-2015	110	30	210	115	500	181
5-8-2015	110	30	210	115	500	179
4-8-2015	110	30	210	115	500	179
3-8-2015	110	31	210	115	500	179
2-8-2015	110	31	210	115	500	179

Weekly SLA Customer Report

Customer CSC_Production
 Database ID 50



=====
 HARDDISK USAGE CSC_PRD_ABS02
 =====

	Total disk space on C (GB)	Free disk space on C (GB)
8-8-2015	80	43
7-8-2015	80	43
6-8-2015	80	43
5-8-2015	80	43
4-8-2015	80	43
3-8-2015	80	43
2-8-2015	80	43

=====
 HARDDISK USAGE CSC_PRD_WEBSRV
 =====

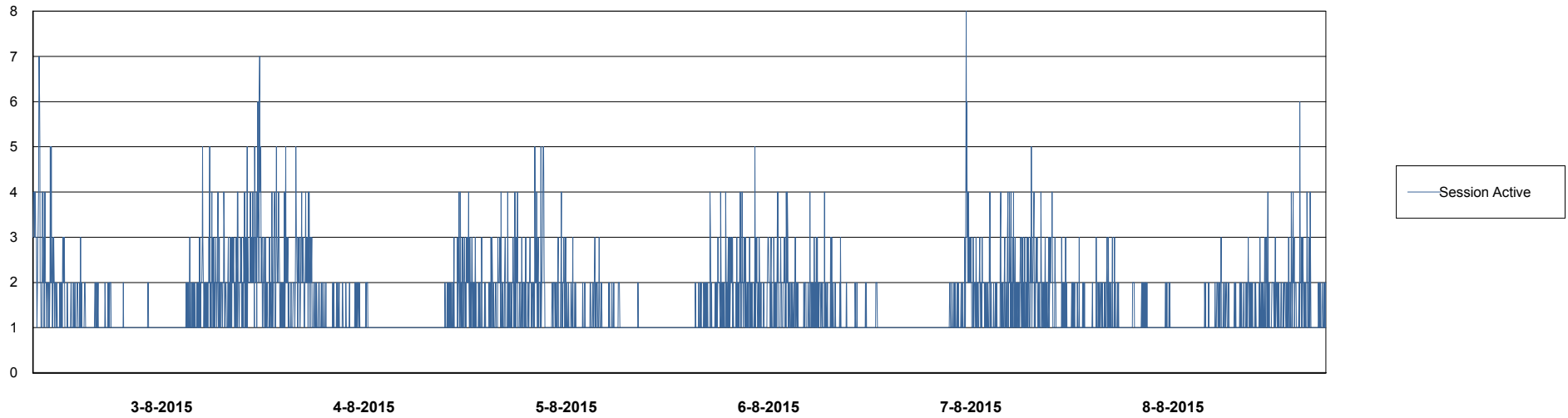
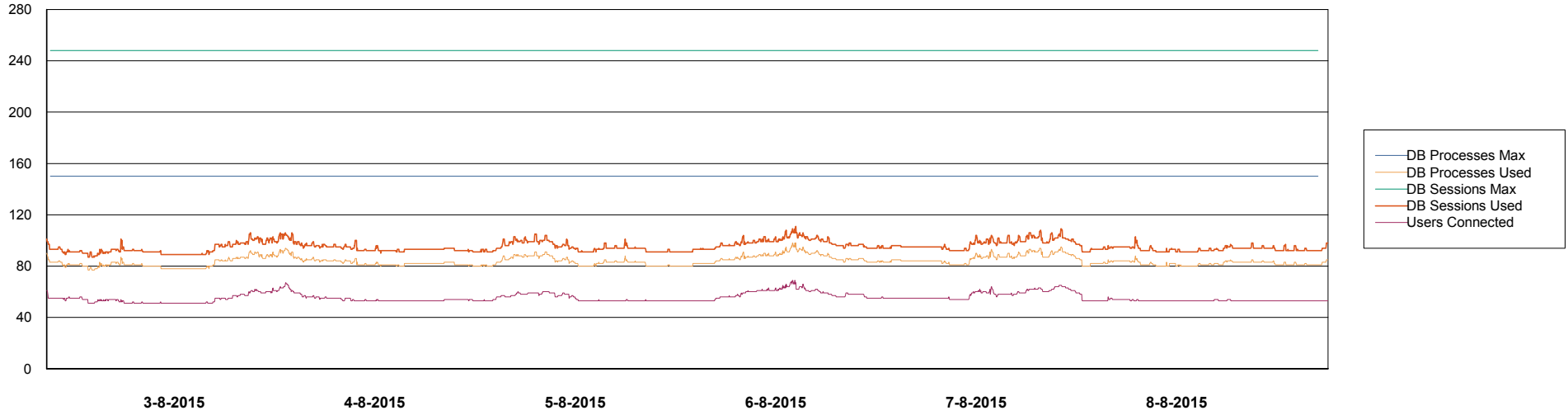
	Used disk space on C (GB)	Total disk space on C (GB)	Free disk space on C (GB)
8-8-2015	36	59	23
7-8-2015	36	59	23
6-8-2015	36	59	23
5-8-2015	36	59	23
4-8-2015	36	59	23
3-8-2015	36	59	23
2-8-2015	36	59	23

Weekly SLA Customer Report

Customer CSC_Production
Database ID 50



DATABASE PERFORMANCE CSCDB_Standby



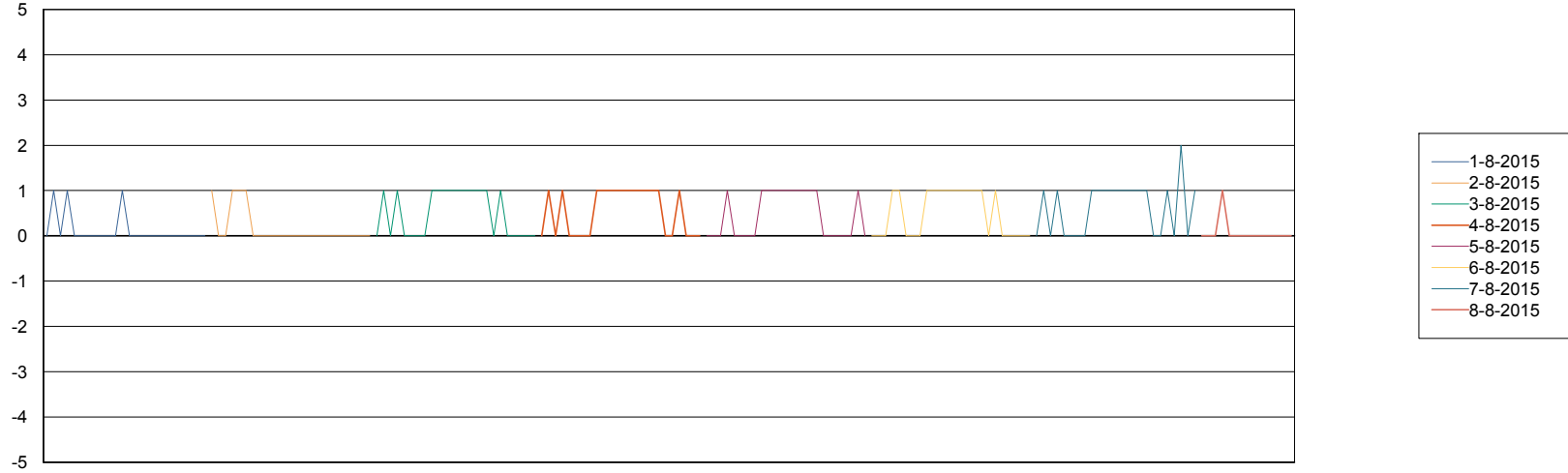
Weekly SLA Customer Report

Customer CSC_Production
Database ID 50



=====
STANDBY DATABASE HEALTH CSC_Production
=====

Recovery lag for last 7 days



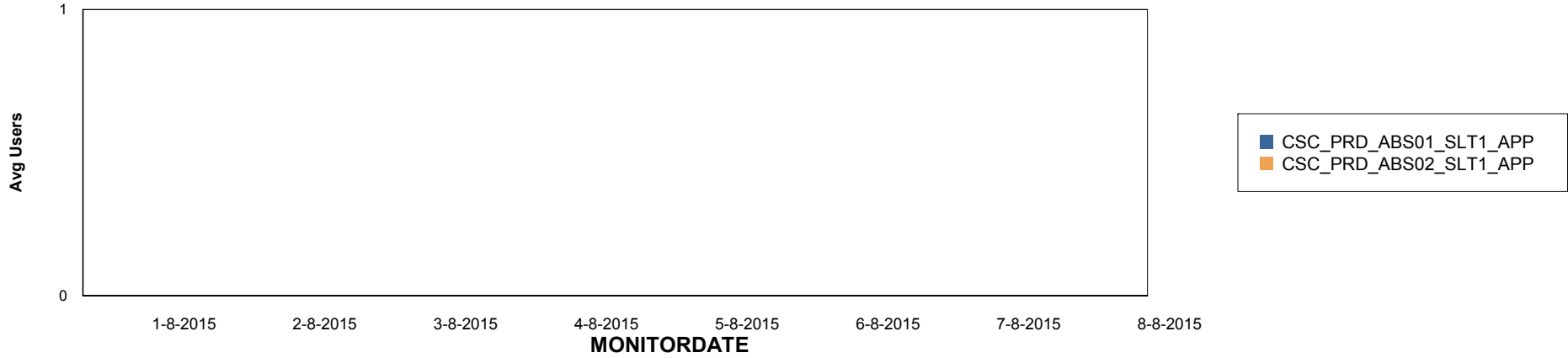
Weekly SLA Customer Report

Customer CSC_Production
Database ID 50

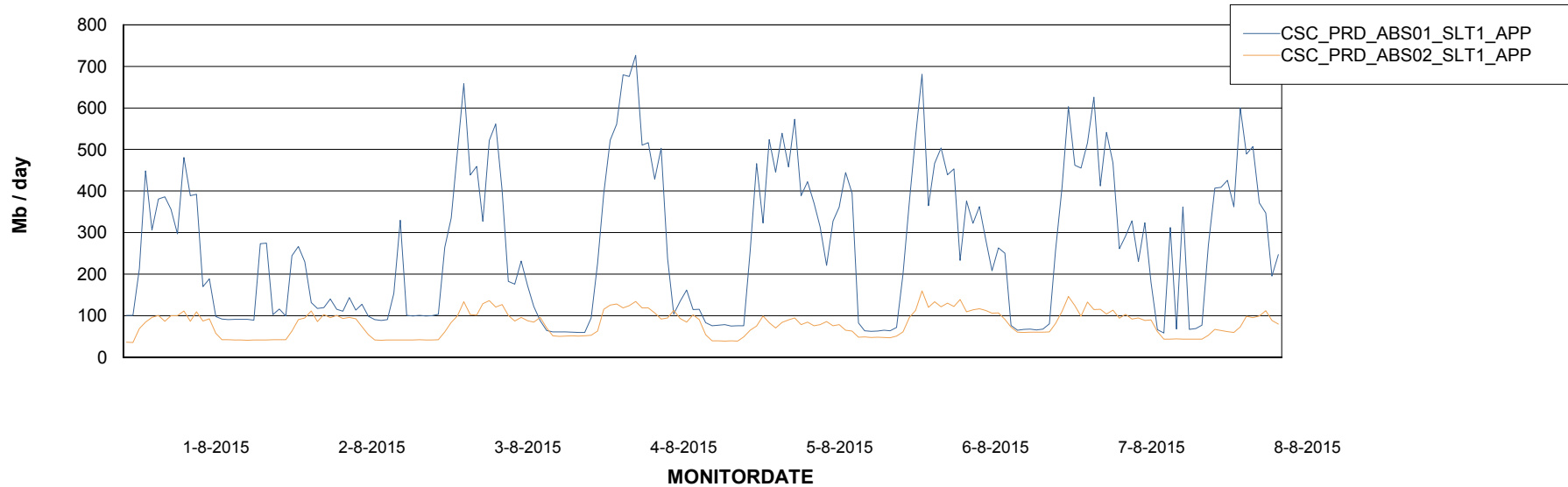


=====
ABSolute Application Server Services
=====

Disaster per ABS Server



Avg memory used per ABS Server Service



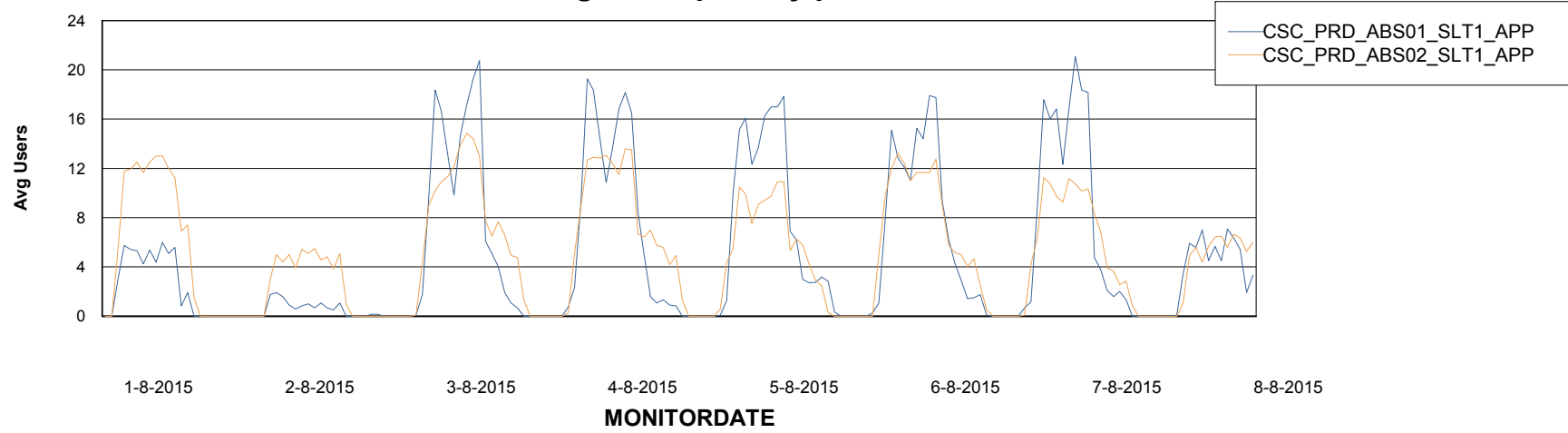
Weekly SLA Customer Report

Customer CSC_Production
Database ID 50



=====
ABSolute Application Server Services
=====

Avg users per day per ABS server



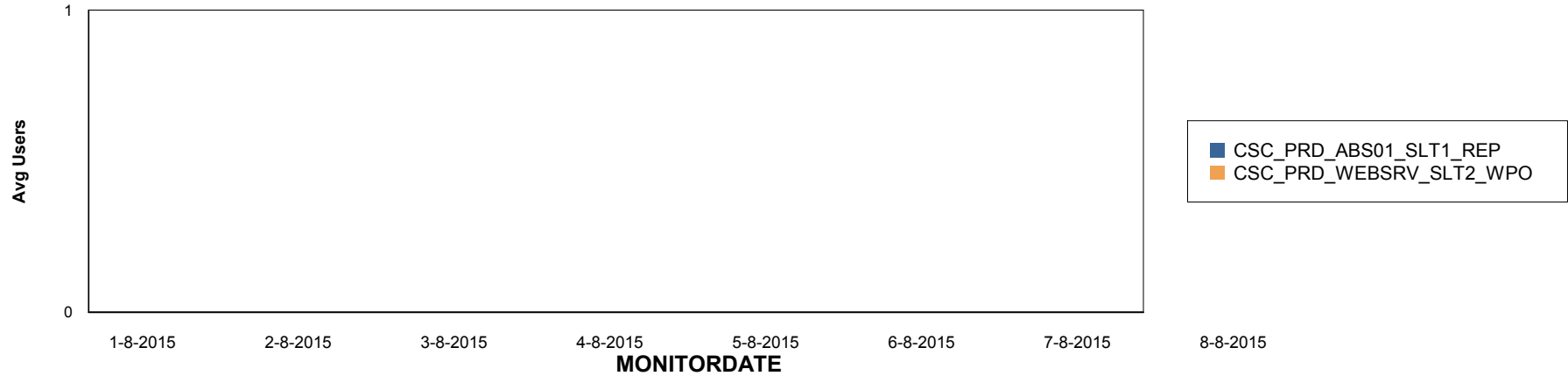
Weekly SLA Customer Report

Customer CSC_Production
Database ID 50

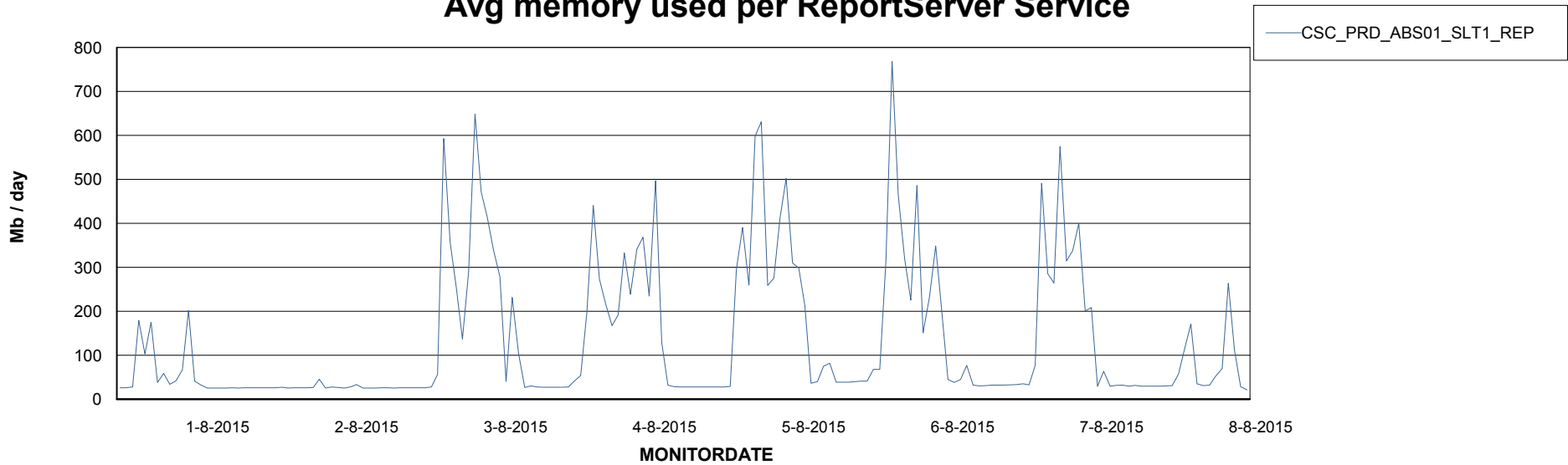


=====
ABSolute Application ReportServer Services
=====

Disaster per ReportServer



Avg memory used per ReportServer Service



Weekly SLA Customer Report

Customer CSC_Production
Database ID 50



Disaster per ABS component

