

Weekly SLA Customer Report

Customer BOH_Production
 Database ID 55



=====
 HARDDISK USAGE BOH_PRD_ORACLE1
 =====

	Total disk space on C (GB)	Free disk space on C (GB)	Total disk space on D (GB)	Free disk space on D (GB)	Total disk space on E (GB)	Free disk space on E (GB)
8-8-2015	130	40	100	52	220	38
7-8-2015	130	40	100	52	220	38
6-8-2015	130	41	100	52	220	54
5-8-2015	130	42	100	52	220	59
4-8-2015	130	42	100	52	220	43
3-8-2015	130	42	100	52	220	42
2-8-2015	130	42	100	52	220	33

=====
 HARDDISK USAGE BOH_PRD_ORACLE2
 =====

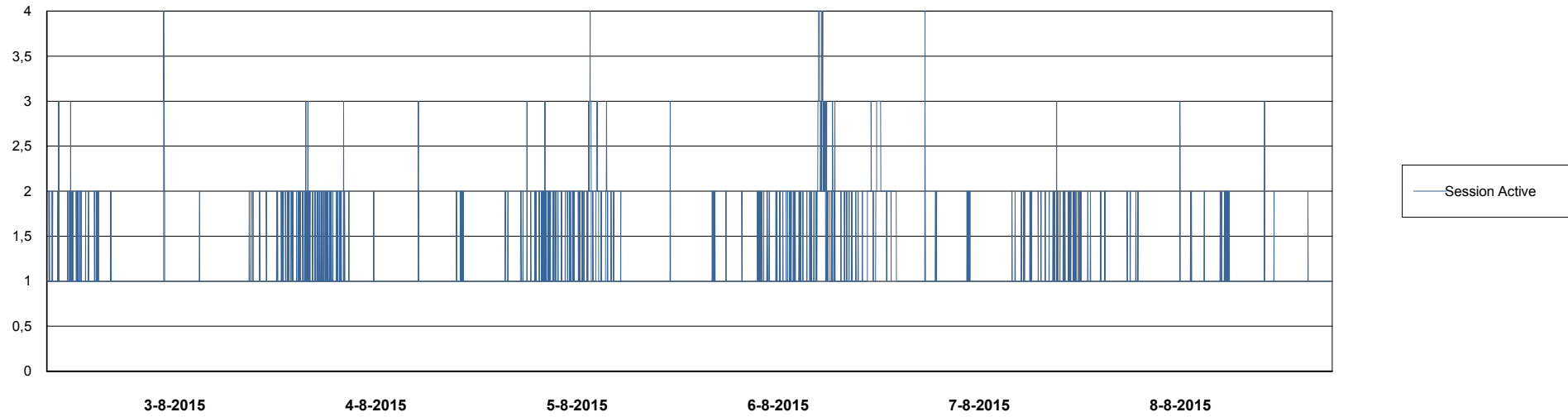
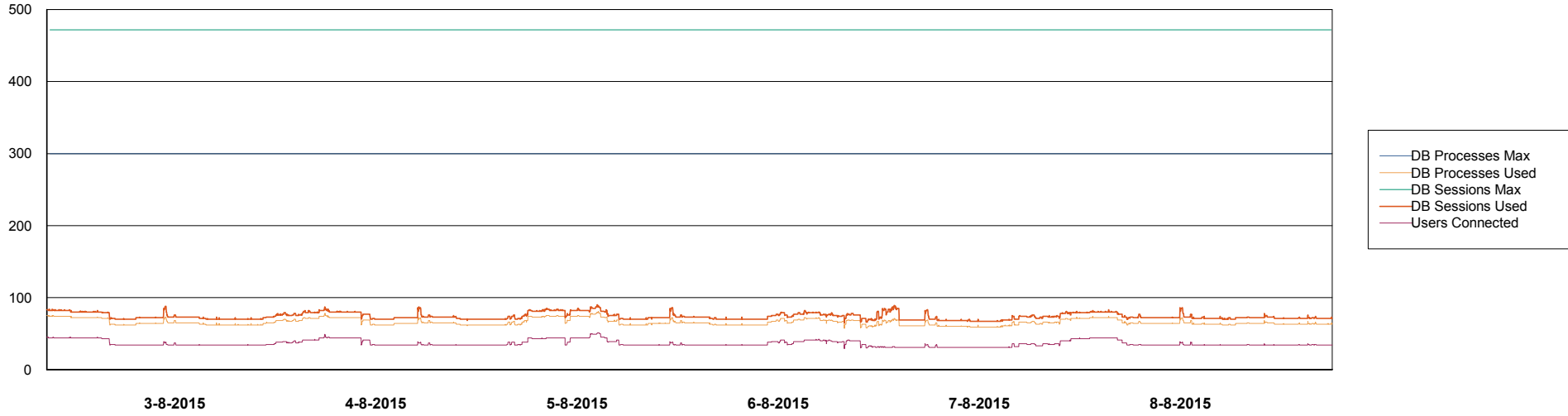
	Total disk space on C (GB)	Free disk space on C (GB)	Total disk space on D (GB)	Free disk space on D (GB)	Total disk space on E (GB)	Free disk space on E (GB)
8-8-2015	557	453	227	179	329	206
7-8-2015	557	453	227	179	329	207
6-8-2015	557	460	227	179	329	223
5-8-2015	557	468	227	179	329	227
4-8-2015	557	474	227	179	329	228
3-8-2015	557	477	227	179	329	180
2-8-2015	557	477	227	179	329	129

Weekly SLA Customer Report

Customer BOH_Production
Database ID 55



DATABASE PERFORMANCE BOHDB_Production

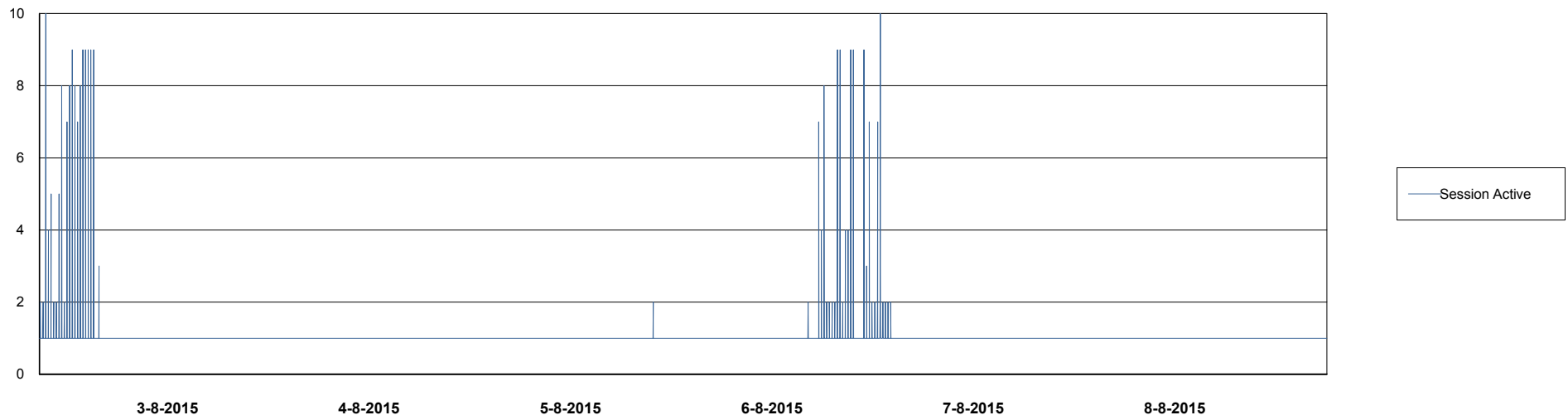
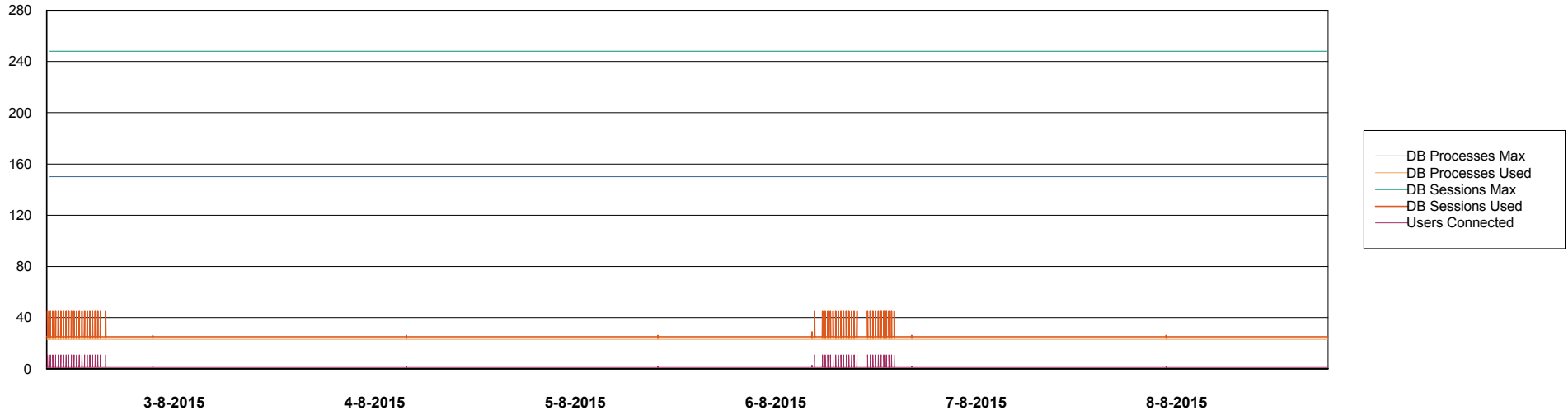


Weekly SLA Customer Report

Customer BOH_Production
Database ID 55



DATABASE PERFORMANCE BOHDB_Standby



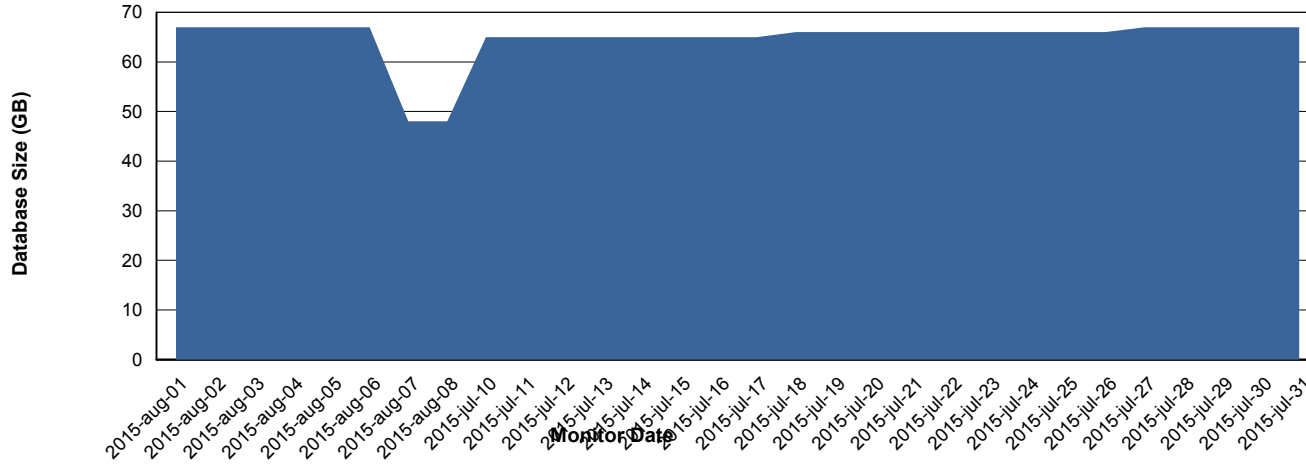
Weekly SLA Customer Report

Customer BOH_Production
 Database ID 55



=====
 DATABASE SIZE BOHDB_Production
 =====

Database growth over last month



=====
 DATABASE TABLESPACES BOHDB_Production
 =====

TOTAL DATABASE SIZE PER TABLESPACE

Date	Tablespace Name	Filesize (Gb)	Usedsize (Gb)	Percentage free
8-8-2015	ABSDATA	33	28	15
	INDX	48	19	60
7-8-2015	ABSDATA	33	28	15
	INDX	48	19	60
6-8-2015	ABSDATA	33	28	15
	INDX	48	38	21
5-8-2015	ABSDATA	33	28	15
	INDX	48	38	21
4-8-2015	ABSDATA	33	28	15
	INDX	48	38	21
3-8-2015	ABSDATA	33	28	15
	INDX	48	38	21
2-8-2015	ABSDATA	33	27	18
	INDX	48	38	21

Weekly SLA Customer Report

Customer BOH_Production
Database ID 55



=====
STANDBY DATABASE HEALTH BOH_Production
=====

Recovery lag for last 7 days

