

Weekly SLA Customer Report

Customer NIX_Production
Database ID 51



=====
HARDDISK USAGE NIX_PRD_ABSAPP1
=====

	Total disk space on C (GB)	Free disk space on C (GB)
1-8-2015	200	179
31-7-2015	200	179
30-7-2015	200	179
29-7-2015	200	179
28-7-2015	200	179
27-7-2015	200	179
26-7-2015	200	179

=====
HARDDISK USAGE NIX_PRD_ABSAPP2
=====

	Total disk space on C (GB)	Free disk space on C (GB)
1-8-2015	200	179
31-7-2015	200	179
30-7-2015	200	179
29-7-2015	200	179
28-7-2015	200	178
27-7-2015	200	178
26-7-2015	200	178

Weekly SLA Customer Report

Customer NIX_Production
 Database ID 51



=====
 HARDDISK USAGE NIX_PRD_ABSWEB01
 =====

	Total disk space on C (GB)	Free disk space on C (GB)
1-8-2015	300	284
31-7-2015	300	284
30-7-2015	300	284
29-7-2015	300	284
28-7-2015	300	284
27-7-2015	300	284
26-7-2015	300	284

=====
 HARDDISK USAGE NIX_PRD_ORACLE_B11
 =====

	Total disk space on C (GB)	Free disk space on C (GB)	Total disk space on E (GB)	Free disk space on E (GB)	Total disk space on F (GB)	Free disk space on F (GB)	Total disk space on G (GB)	Free disk space on G (GB)
1-8-2015	279	204	558	399	558	457	279	238
31-7-2015	279	204	558	399	558	458	279	238
30-7-2015	279	204	558	399	558	458	279	238
29-7-2015	279	204	558	399	558	458	279	238
28-7-2015	279	204	558	399	558	458	279	238
27-7-2015	279	204	558	399	558	458	279	238
26-7-2015	279	204	558	399	558	458	279	238

Weekly SLA Customer Report

Customer NIX_Production
 Database ID 51



=====
 HARDDISK USAGE NIX_PRD_ORCDB1
 =====

	Total disk space on C (GB)	Free disk space on C (GB)	Total disk space on E (GB)	Free disk space on E (GB)	Total disk space on F (GB)	Free disk space on F (GB)	Total disk space on G (GB)	Free disk space on G (GB)
1-8-2015	279	175	558	498	558	457	279	173
31-7-2015	279	181	558	498	558	457	279	174
30-7-2015	279	181	558	498	558	457	279	176
29-7-2015	279	182	558	498	558	457	279	178
28-7-2015	279	182	558	498	558	457	279	181
27-7-2015	279	182	558	498	558	457	279	81
26-7-2015	279	182	558	498	558	457	279	41

=====
 HARDDISK USAGE NIX_PRD_ORCDB2
 =====

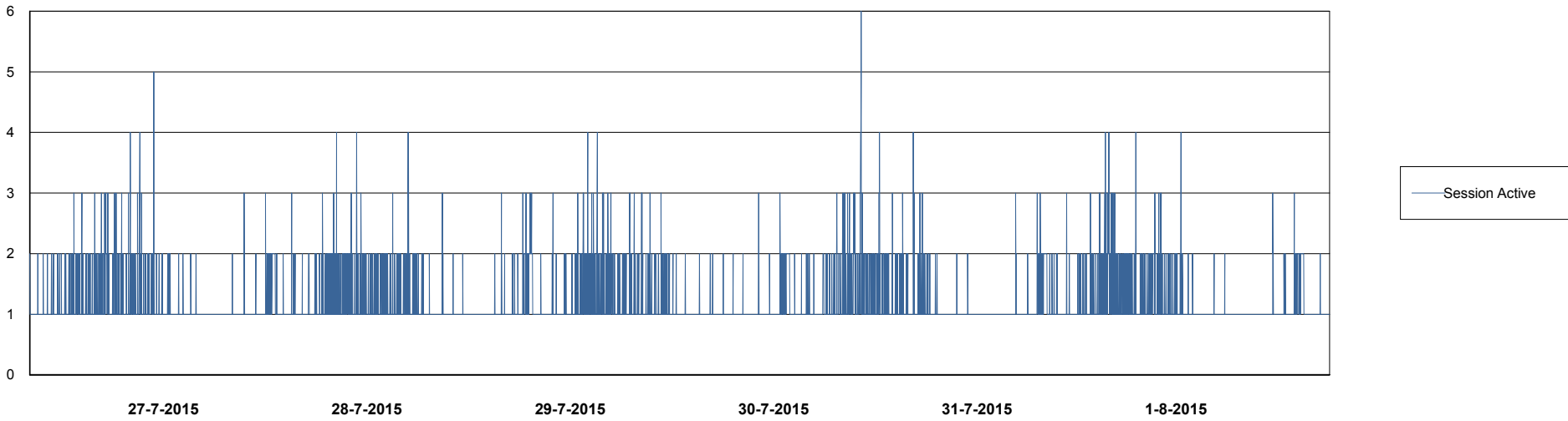
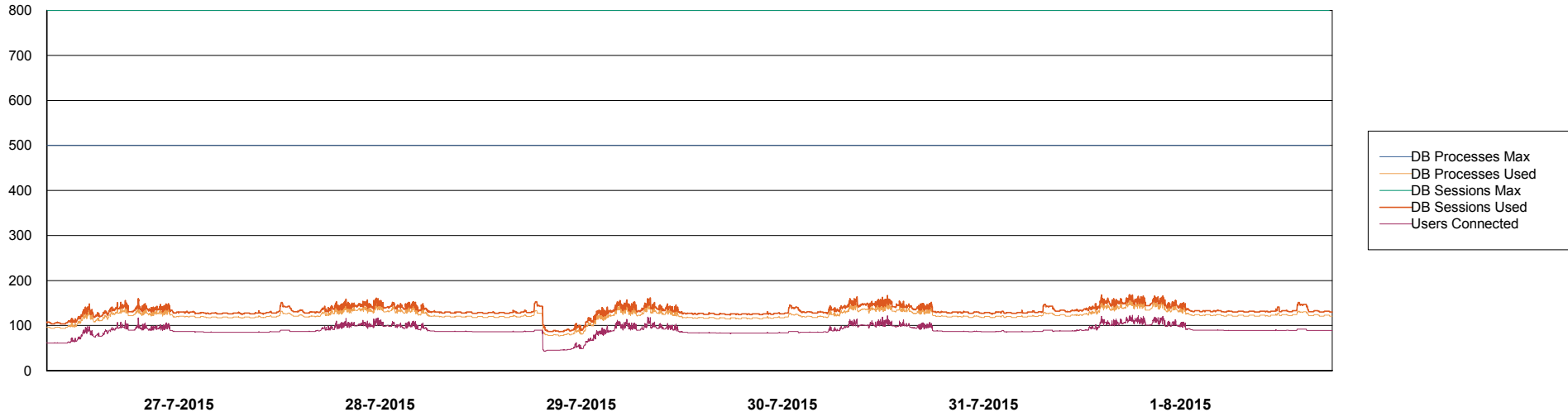
	Total disk space on C (GB)	Free disk space on C (GB)	Total disk space on E (GB)	Free disk space on E (GB)	Total disk space on F (GB)	Free disk space on F (GB)	Total disk space on G (GB)	Free disk space on G (GB)
1-8-2015	279	235	558	404	558	458	279	206
31-7-2015	279	235	558	404	558	458	279	208
30-7-2015	279	235	558	404	558	458	279	210
29-7-2015	279	235	558	404	558	458	279	212
28-7-2015	279	235	558	404	558	458	279	214
27-7-2015	279	235	558	404	558	458	279	115
26-7-2015	279	235	558	404	558	458	279	74

Weekly SLA Customer Report

Customer NIX_Production
Database ID 51



DATABASE PERFORMANCE NIXDB_Production



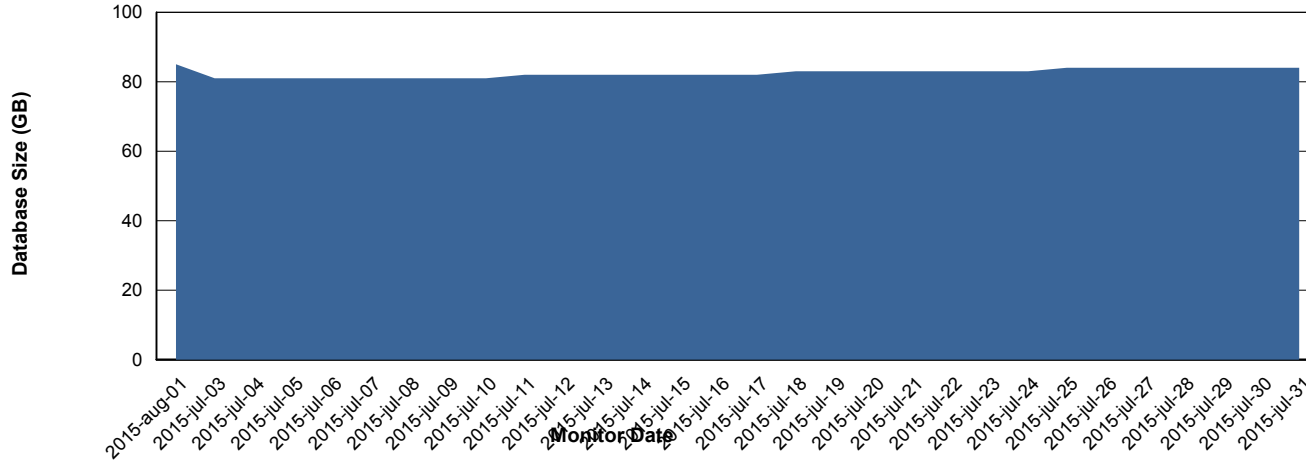
Weekly SLA Customer Report

Customer NIX_Production
 Database ID 51



=====
 DATABASE SIZE NIXDB_Production
 =====

Database growth over last month



=====
 DATABASE TABLESPACES NIXDB_Production
 =====

TOTAL DATABASE SIZE PER TABLESPACE

Date	Tablespace Name	Filesize (Gb)	Usedsize (Gb)	Percentage free
1-8-2015	ABSDATA	50	33	34
	INDX	100	50	50
31-7-2015	ABSDATA	50	33	34
	INDX	100	50	50
30-7-2015	ABSDATA	50	33	34
	INDX	100	50	50
29-7-2015	ABSDATA	50	33	34
	INDX	100	50	50
28-7-2015	ABSDATA	50	33	34
	INDX	100	50	50
27-7-2015	ABSDATA	50	33	34
	INDX	100	50	50
26-7-2015	ABSDATA	50	33	34
	INDX	100	49	51

Weekly SLA Customer Report

Customer NIX_Production
Database ID 51



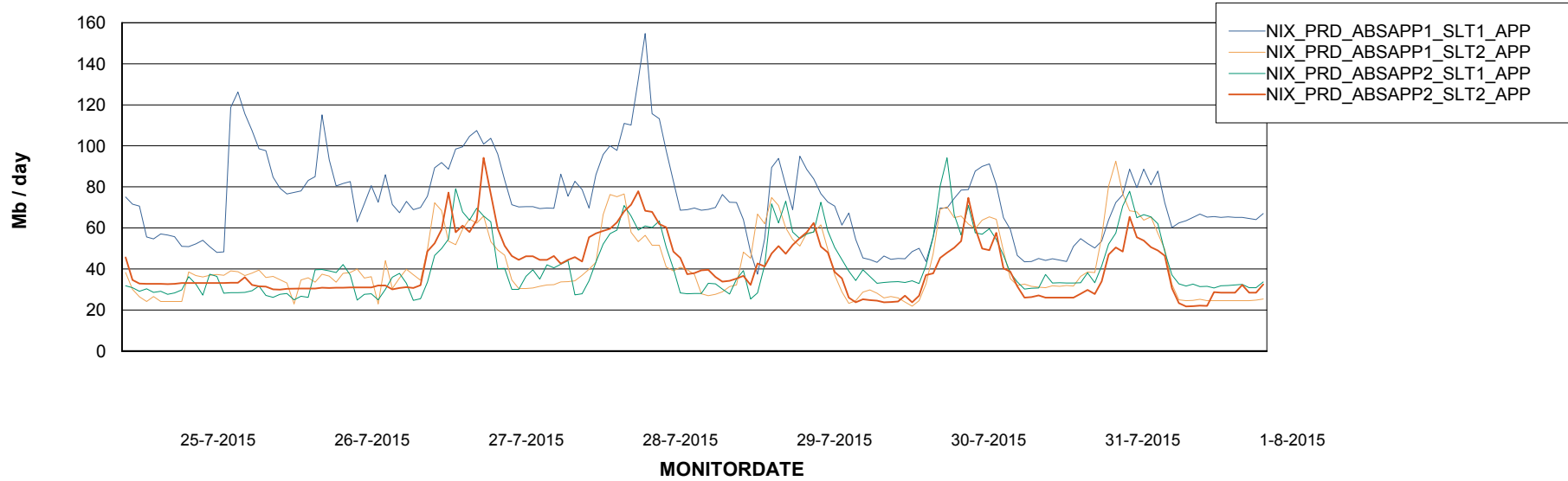
Weekly SLA Customer Report

Customer NIX_Production
Database ID 51



=====
ABSolute Application Server Services
=====

Avg memory used per ABS Server Service



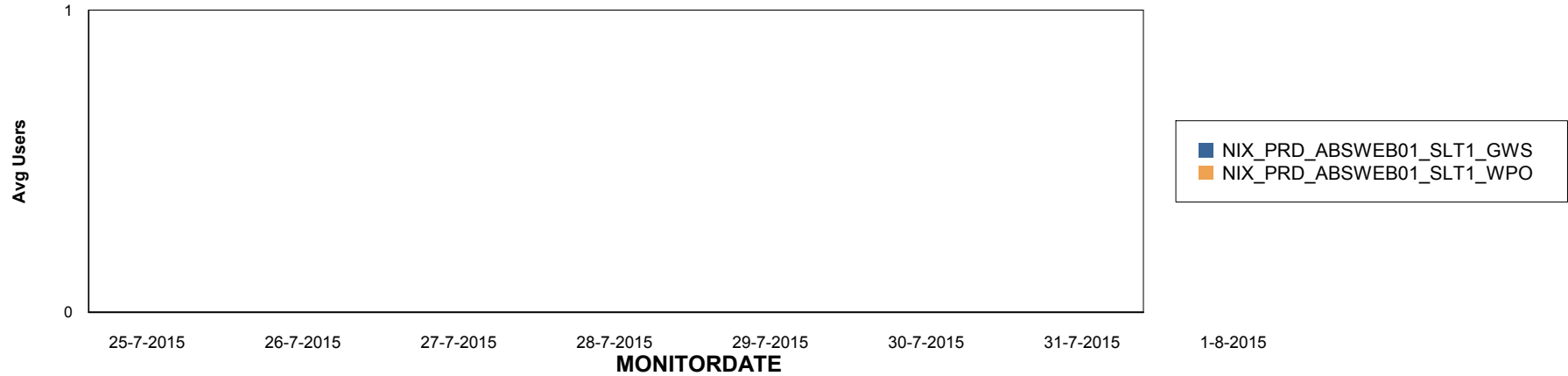
Weekly SLA Customer Report

Customer NIX_Production
Database ID 51

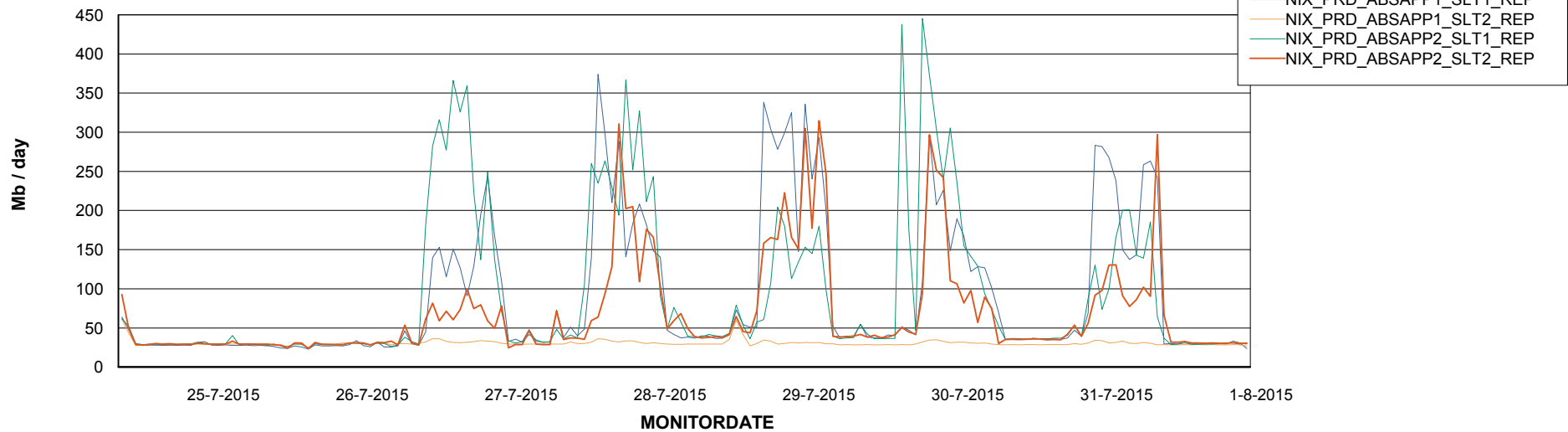


=====
ABSolute Application ReportServer Services
=====

Disaster per ReportServer



Avg memory used per ReportServer Service



Weekly SLA Customer Report

Customer NIX_Production
Database ID 51



Disaster per ABS component

