

Weekly SLA Customer Report

Customer JWR Production
 Database ID 43



=====
 HARDDISK USAGE JWR_PRD_JWR-ABS-01
 =====

	Used disk space on / (GB)	Total disk space on / (GB)	Free disk space on / (GB)
1-8-2015	29	49	18
31-7-2015	29	49	18
30-7-2015	29	49	18
29-7-2015	29	49	18
28-7-2015	30	49	16
27-7-2015	30	49	17
26-7-2015	30	49	17

=====
 HARDDISK USAGE JWR_PRD_JWR-ABS-02
 =====

	Used disk space on / (GB)	Total disk space on / (GB)	Free disk space on / (GB)
1-8-2015	31	49	16
31-7-2015	31	49	16
30-7-2015	31	49	16
29-7-2015	31	49	16
28-7-2015	31	49	16
27-7-2015	31	49	16
26-7-2015	31	49	16

Weekly SLA Customer Report

Customer JWR Production
 Database ID 43



=====
 HARDDISK USAGE JWR_PRD_JWR-ODB-01
 =====

	Used disk space on / (GB)	Total disk space on / (GB)	Free disk space on / (GB)
1-8-2015	96	148	45
31-7-2015	96	148	45
30-7-2015	96	148	45
29-7-2015	96	148	45
28-7-2015	97	148	44
27-7-2015	93	148	48
26-7-2015	85	148	55

=====
 HARDDISK USAGE JWR_PRD_JWR-ODB-02
 =====

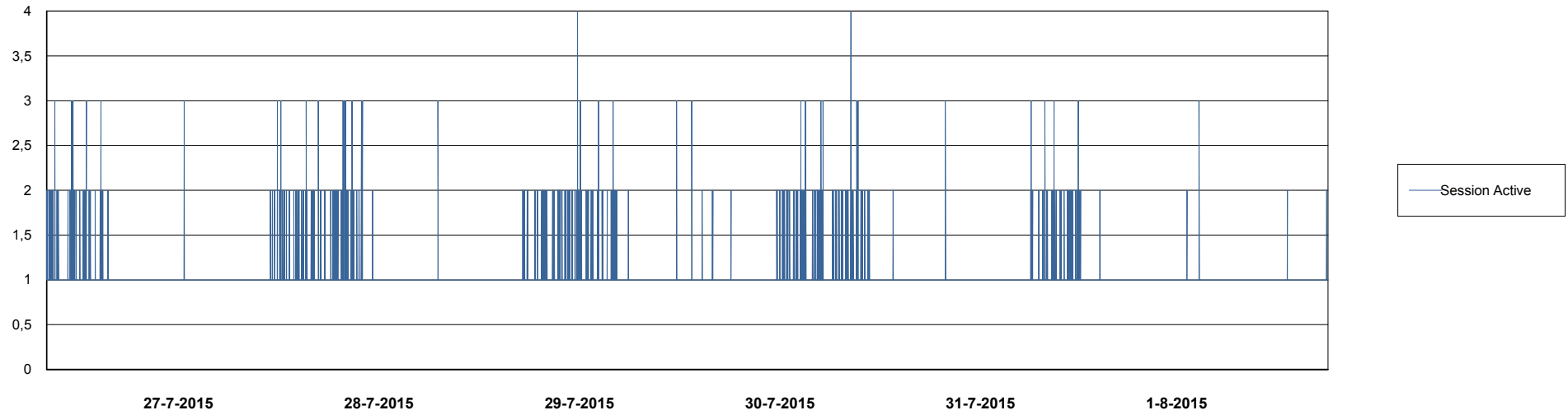
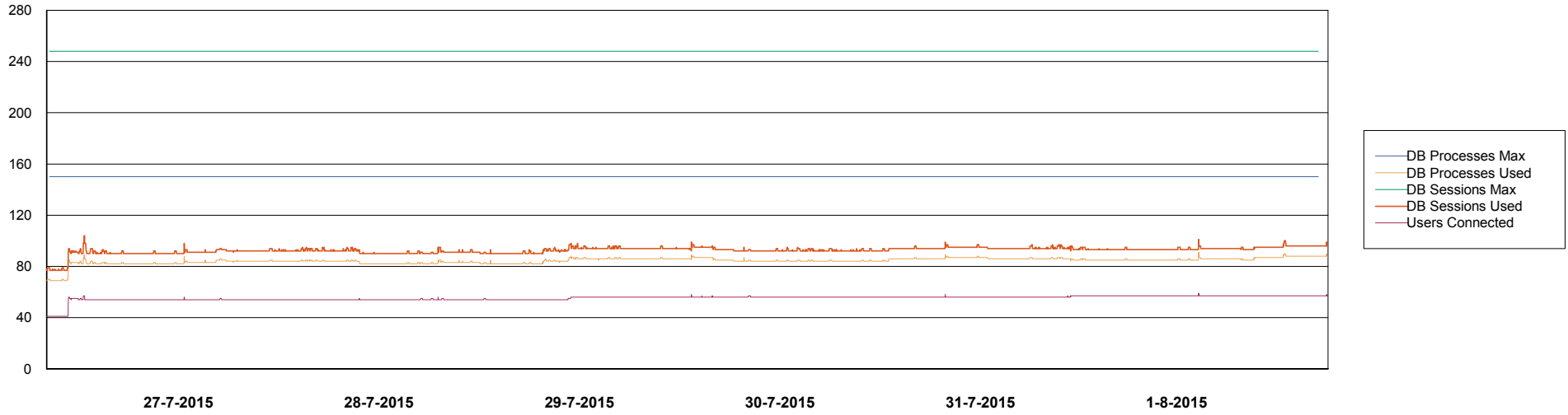
	Used disk space on / (GB)	Total disk space on / (GB)	Free disk space on / (GB)
1-8-2015	95	138	35
31-7-2015	96	138	35
30-7-2015	96	138	35
29-7-2015	96	138	35
28-7-2015	96	138	35
27-7-2015	96	138	35
26-7-2015	95	138	36

Weekly SLA Customer Report

Customer JWR Production
Database ID 43



DATABASE PERFORMANCE JWRDB_Production



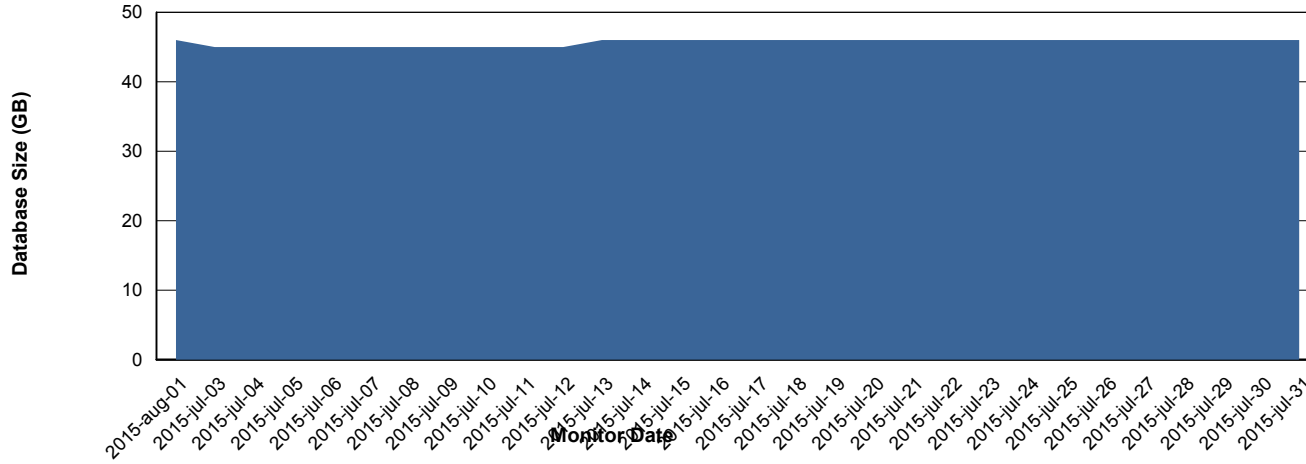
Weekly SLA Customer Report

Customer JWR Production
 Database ID 43



=====
 DATABASE SIZE JWRDB_Production
 =====

Database growth over last month



=====
 DATABASE TABLESPACES JWRDB_Production
 =====

TOTAL DATABASE SIZE PER TABLESPACE

Date	Tablespace Name	Filesize (Gb)	Usedsize (Gb)	Percentage free
1-8-2015	ABSDATA	18	13	28
	INDX	38	32	16
31-7-2015	ABSDATA	18	13	28
	INDX	38	32	16
30-7-2015	ABSDATA	18	13	28
	INDX	38	32	16
29-7-2015	ABSDATA	18	13	28
	INDX	38	32	16
28-7-2015	ABSDATA	18	13	28
	INDX	38	32	16
27-7-2015	ABSDATA	18	13	28
	INDX	38	32	16
26-7-2015	ABSDATA	18	13	28
	INDX	38	32	16

Weekly SLA Customer Report

Customer JWR Production
Database ID 43



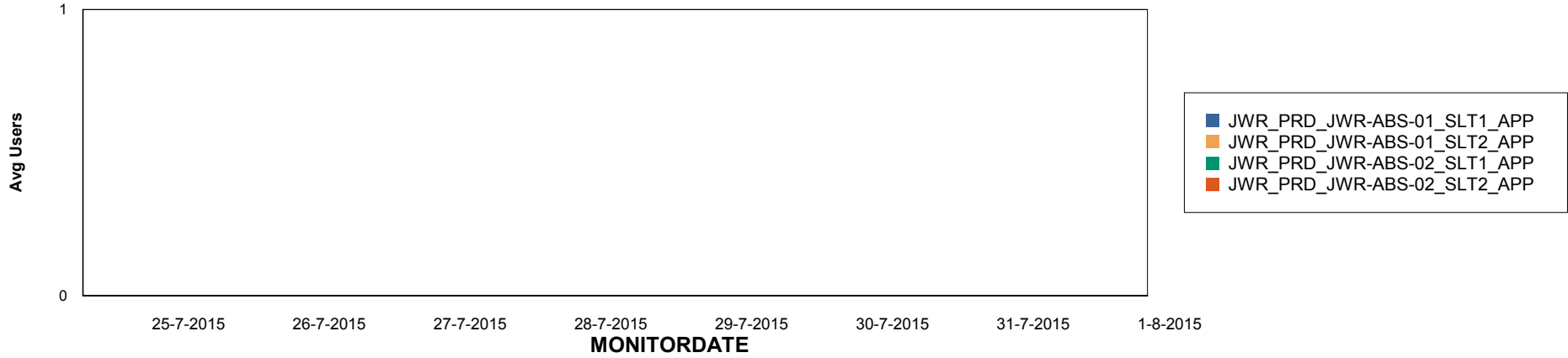
Weekly SLA Customer Report

Customer JWR Production
Database ID 43

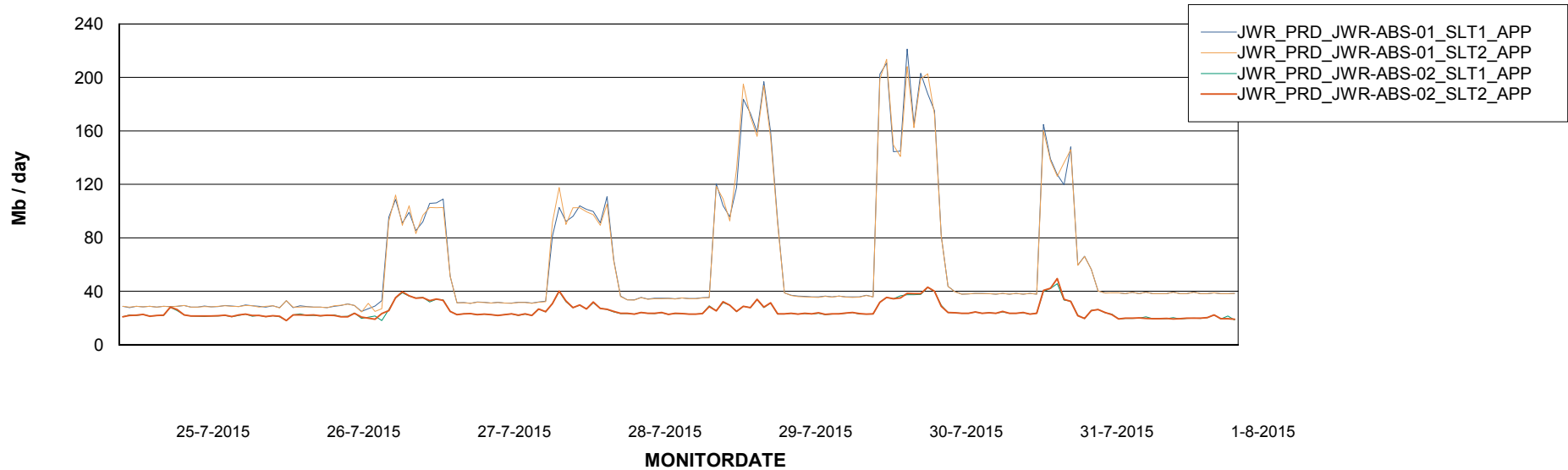


=====
ABSolute Application Server Services
=====

Disaster per ABS Server



Avg memory used per ABS Server Service



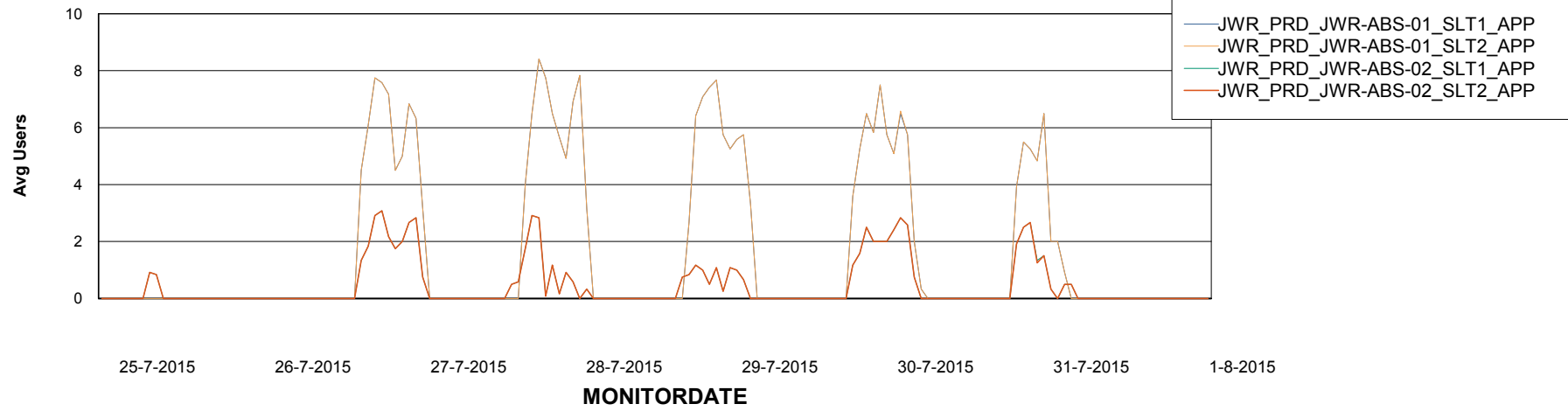
Weekly SLA Customer Report

Customer JWR Production
Database ID 43



=====
ABSolute Application Server Services
=====

Avg users per day per ABS server



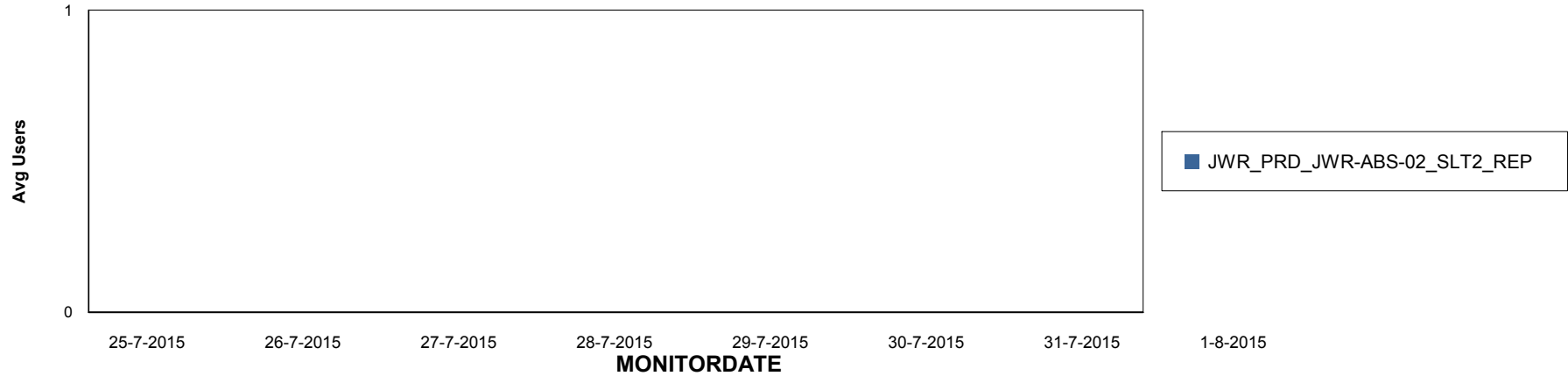
Weekly SLA Customer Report

Customer JWR Production
Database ID 43

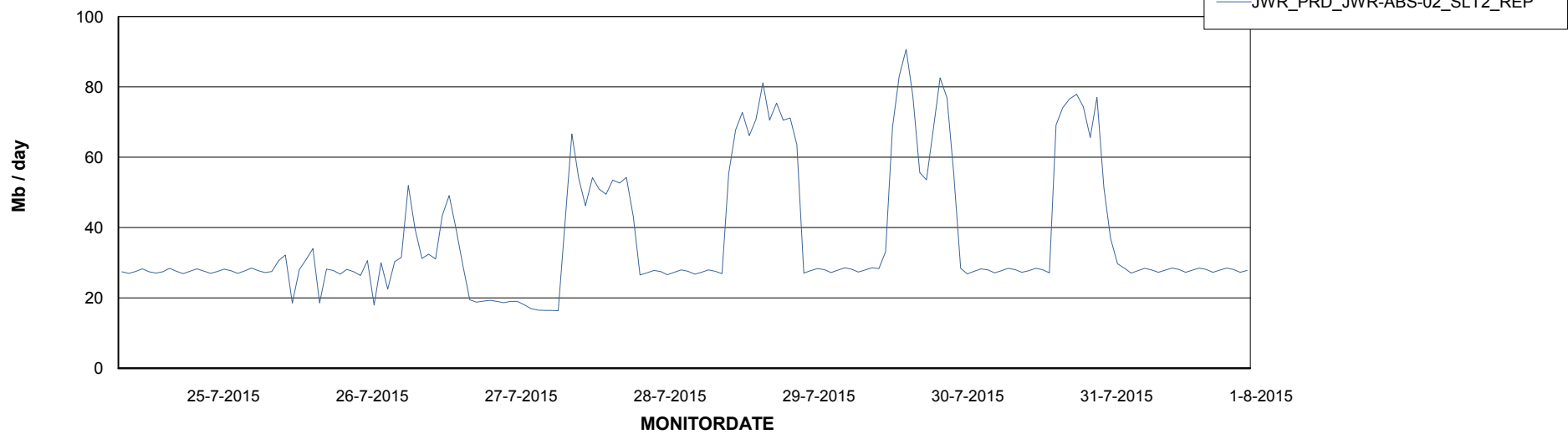


=====
ABSolute Application ReportServer Services
=====

Disaster per ReportServer



Avg memory used per ReportServer Service



Weekly SLA Customer Report

Customer JWR Production
Database ID 43



Disaster per ABS component

