

Weekly SLA Customer Report

Customer JWR Production
 Database ID 43



=====
 HARDDISK USAGE JWR_PRD_JWR-ABS-01
 =====

	Used disk space on / (GB)	Total disk space on / (GB)	Free disk space on / (GB)
25-7-2015	30	49	17
24-7-2015	29	49	18
23-7-2015	27	49	19
22-7-2015	28	49	19
21-7-2015	28	49	18
20-7-2015	29	49	18
19-7-2015	27	49	19

=====
 HARDDISK USAGE JWR_PRD_JWR-ABS-02
 =====

	Used disk space on / (GB)	Total disk space on / (GB)	Free disk space on / (GB)
25-7-2015	31	49	16
24-7-2015	31	49	16
23-7-2015	31	49	16
22-7-2015	31	49	16
21-7-2015	31	49	15
20-7-2015	32	49	15
19-7-2015	31	49	16

Weekly SLA Customer Report

Customer JWR Production
 Database ID 43



=====

HARDDISK USAGE JWR_PRD_JWR-ODB-01

=====

	Used disk space on / (GB)	Total disk space on / (GB)	Free disk space on / (GB)
25-7-2015	86	148	55
24-7-2015	86	148	55
23-7-2015	85	148	56
22-7-2015	84	148	57
21-7-2015	84	148	56
20-7-2015	86	148	55
19-7-2015	84	148	57

=====

HARDDISK USAGE JWR_PRD_JWR-ODB-02

=====

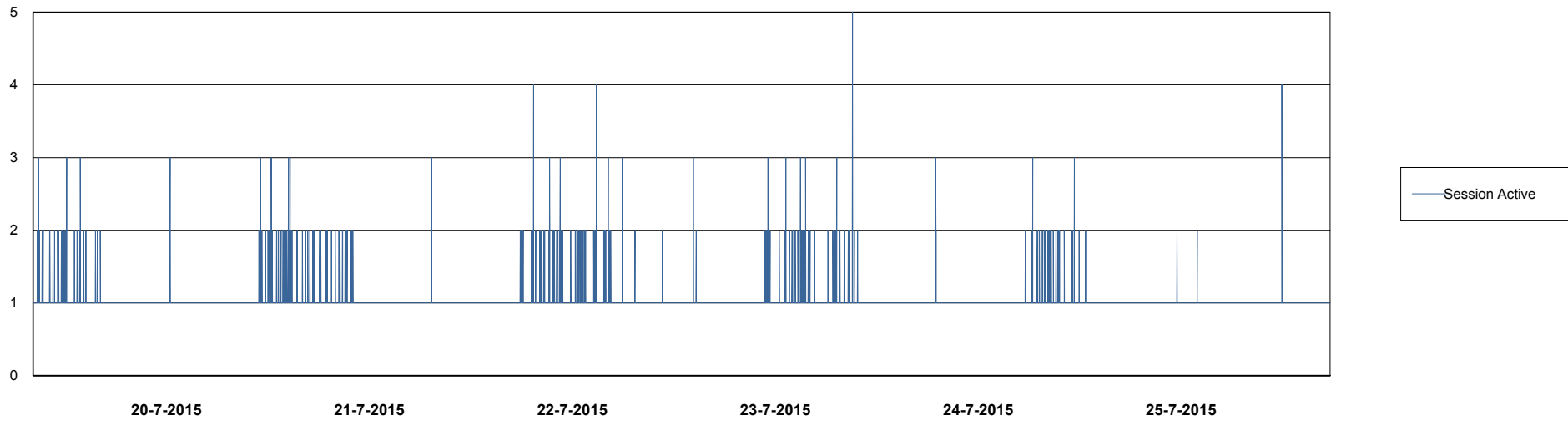
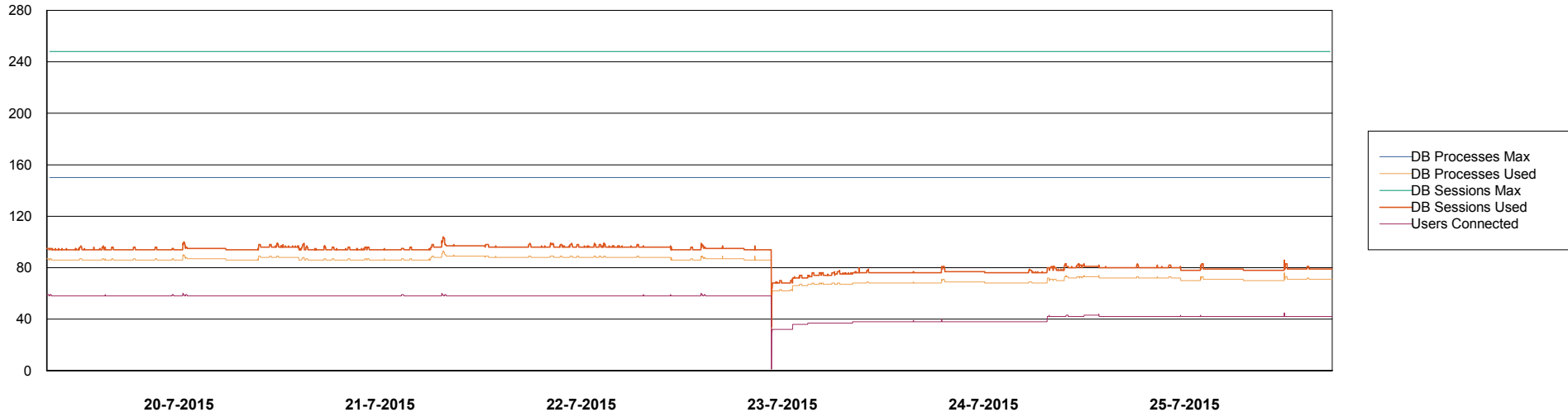
	Used disk space on / (GB)	Total disk space on / (GB)	Free disk space on / (GB)
25-7-2015	95	138	35
24-7-2015	96	138	35
23-7-2015	96	138	35
22-7-2015	96	138	35
21-7-2015	96	138	35
20-7-2015	96	138	35
19-7-2015	93	138	38

Weekly SLA Customer Report

Customer JWR Production
Database ID 43



DATABASE PERFORMANCE JWRDB_Production



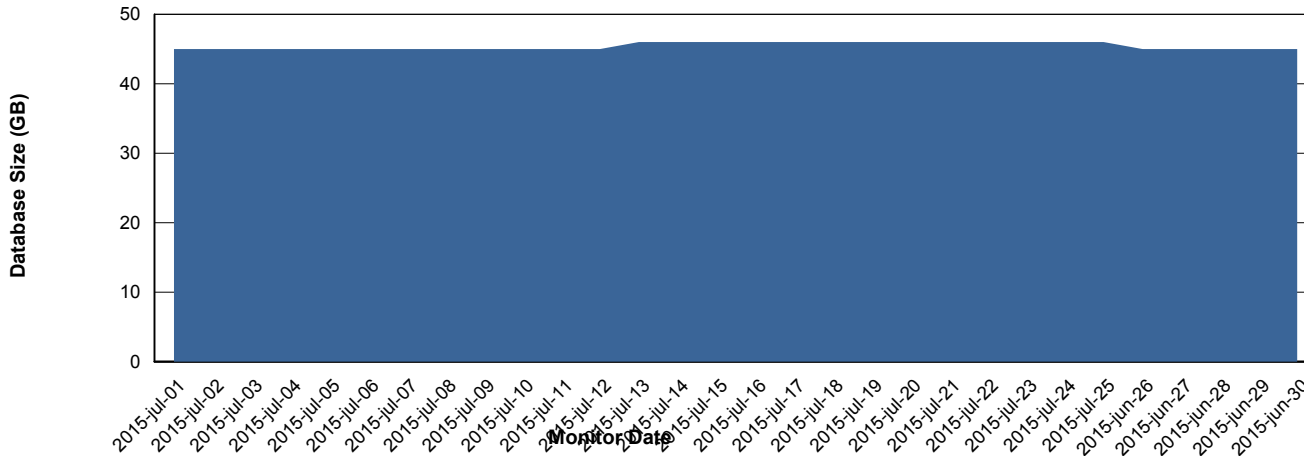
Weekly SLA Customer Report

Customer JWR Production
 Database ID 43



=====
 DATABASE SIZE JWRDB_Production
 =====

Database growth over last month



=====
 DATABASE TABLESPACES JWRDB_Production
 =====

TOTAL DATABASE SIZE PER TABLESPACE

Date	Tablespace Name	Filesize (Gb)	Usedsize (Gb)	Percentage free
25-7-2015	ABSDATA	18	13	28
	INDX	38	32	16
24-7-2015	ABSDATA	18	13	28
	INDX	38	32	16
23-7-2015	ABSDATA	18	13	28
	INDX	38	32	16
22-7-2015	ABSDATA	18	13	28
	INDX	38	32	16
21-7-2015	ABSDATA	18	13	28
	INDX	38	32	16
20-7-2015	ABSDATA	18	13	28
	INDX	38	32	16
19-7-2015	ABSDATA	18	13	28
	INDX	38	32	16

Weekly SLA Customer Report

Customer JWR Production
Database ID 43



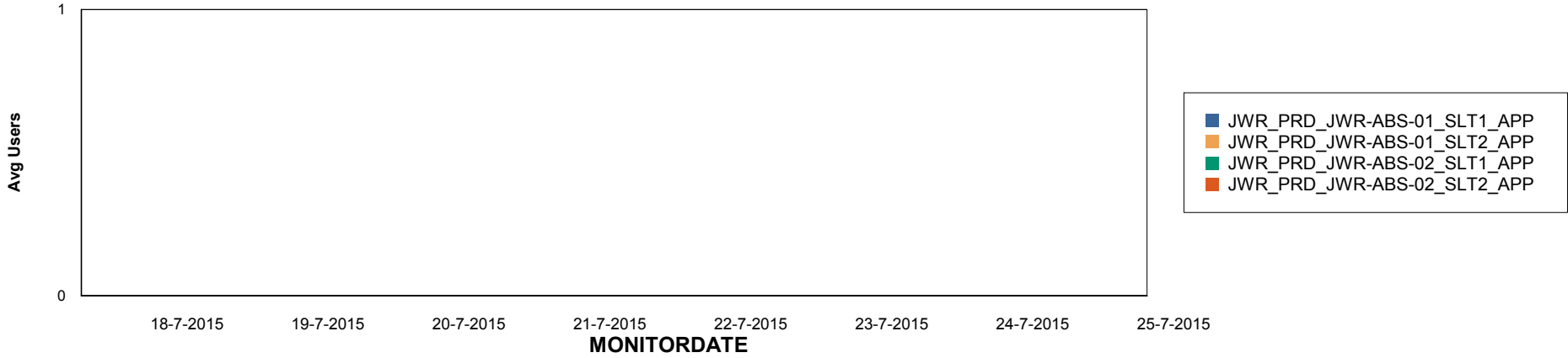
Weekly SLA Customer Report

Customer JWR Production
Database ID 43

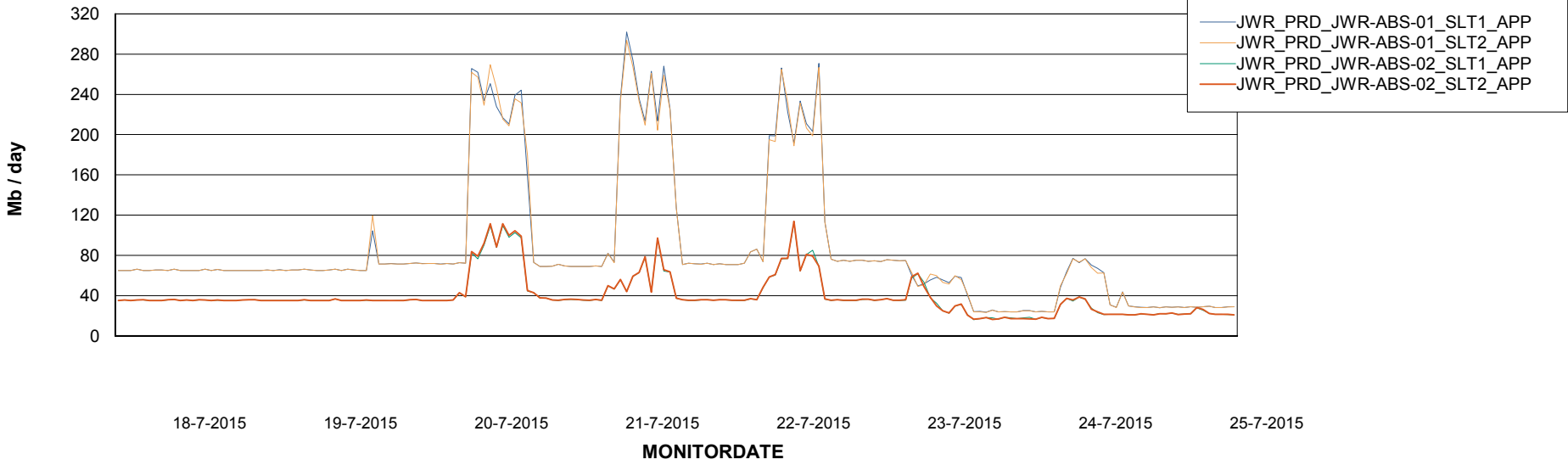


=====
ABSolute Application Server Services
=====

Disaster per ABS Server



Avg memory used per ABS Server Service



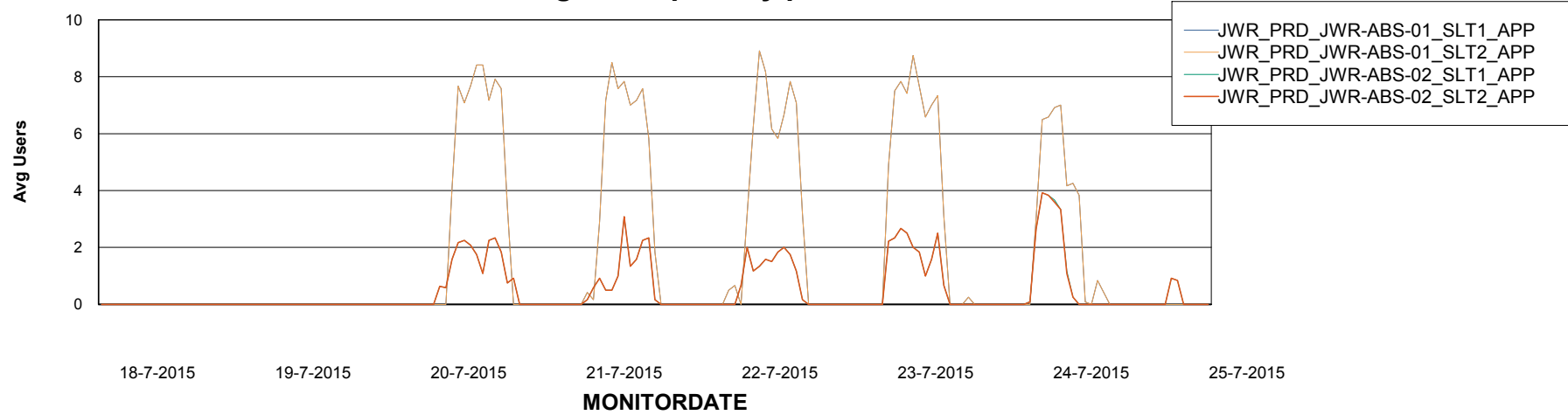
Weekly SLA Customer Report

Customer JWR Production
Database ID 43



=====
ABSolute Application Server Services
=====

Avg users per day per ABS server



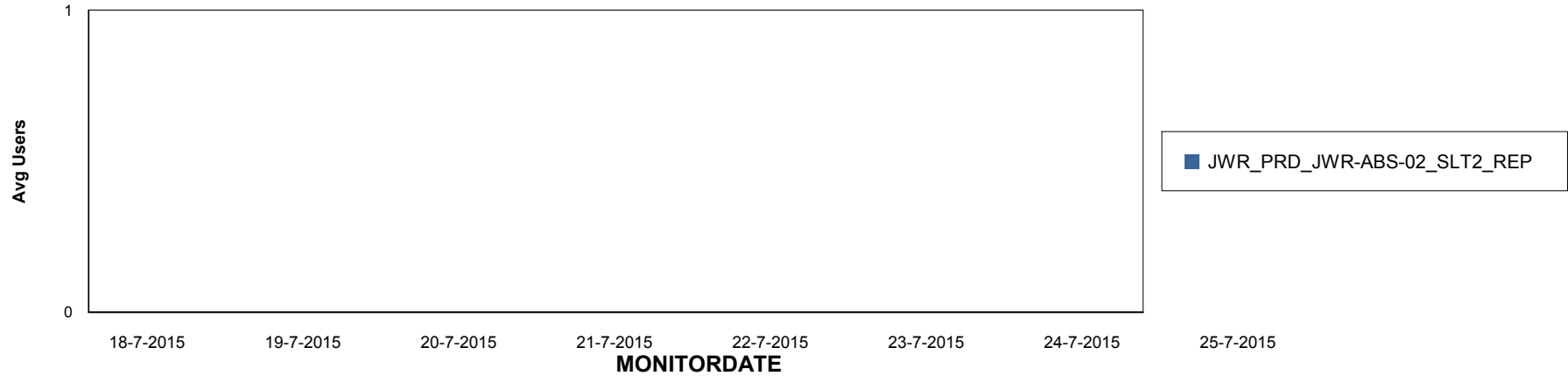
Weekly SLA Customer Report

Customer JWR Production
Database ID 43

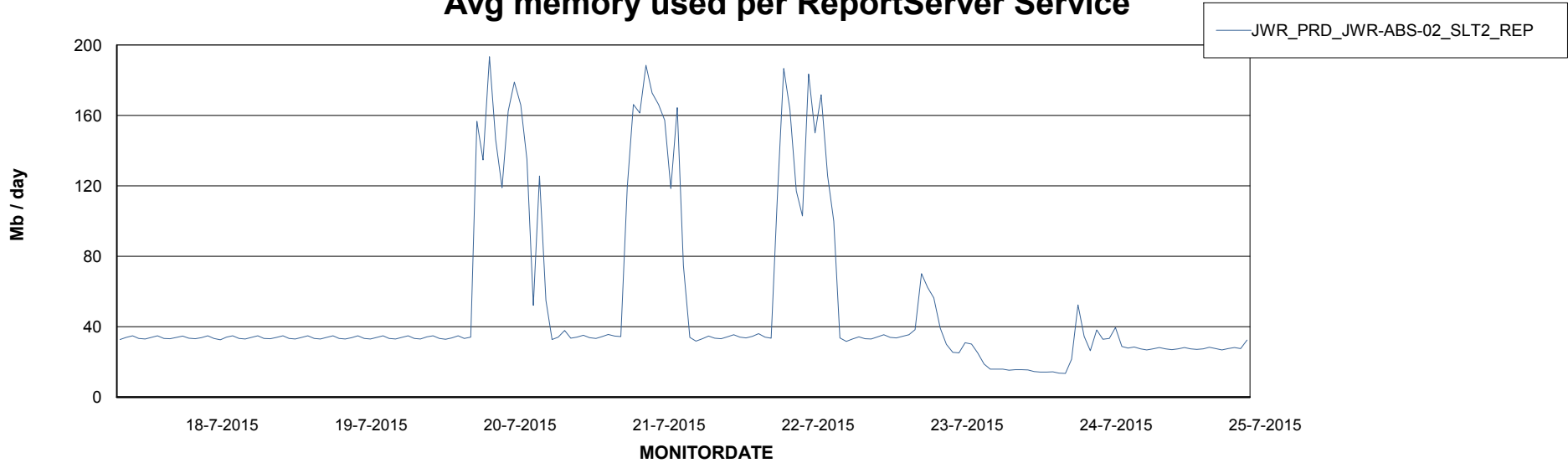


=====
ABSolute Application ReportServer Services
=====

Disaster per ReportServer



Avg memory used per ReportServer Service



Weekly SLA Customer Report

Customer JWR Production
Database ID 43



Disaster per ABS component

