

Weekly SLA Customer Report

Customer NIX_Production
Database ID 51



=====
HARDDISK USAGE NIX_PRD_ABSAPP1
=====

	Total disk space on C (GB)	Free disk space on C (GB)
18-7-2015	200	179
17-7-2015	200	179
16-7-2015	200	179
15-7-2015	200	179
14-7-2015	200	179
13-7-2015	200	179
12-7-2015	200	179

=====
HARDDISK USAGE NIX_PRD_ABSAPP2
=====

	Total disk space on C (GB)	Free disk space on C (GB)
18-7-2015	200	179
17-7-2015	200	179
16-7-2015	200	179
15-7-2015	200	179
14-7-2015	200	179
13-7-2015	200	179
12-7-2015	200	179

Weekly SLA Customer Report

Customer NIX_Production
 Database ID 51



=====
 HARDDISK USAGE NIX_PRD_ABSWEB01
 =====

	Total disk space on C (GB)	Free disk space on C (GB)
18-7-2015	300	284
17-7-2015	300	284
16-7-2015	300	284
15-7-2015	300	284
14-7-2015	300	285
13-7-2015	300	285
12-7-2015	300	284

=====
 HARDDISK USAGE NIX_PRD_ORACLE_B11
 =====

	Total disk space on C (GB)	Free disk space on C (GB)	Total disk space on E (GB)	Free disk space on E (GB)	Total disk space on F (GB)	Free disk space on F (GB)	Total disk space on G (GB)	Free disk space on G (GB)
18-7-2015	279	204	558	400	558	457	279	238
17-7-2015	279	204	558	400	558	458	279	238
16-7-2015	279	204	558	400	558	458	279	238
15-7-2015	279	204	558	400	558	458	279	238
14-7-2015	279	204	558	400	558	458	279	238
13-7-2015	279	204	558	400	558	458	279	238
12-7-2015	279	204	558	400	558	458	279	238

Weekly SLA Customer Report

Customer NIX_Production
 Database ID 51



=====
 HARDDISK USAGE NIX_PRD_ORCDB1
 =====

	Total disk space on C (GB)	Free disk space on C (GB)	Total disk space on E (GB)	Free disk space on E (GB)	Total disk space on F (GB)	Free disk space on F (GB)	Total disk space on G (GB)	Free disk space on G (GB)
18-7-2015	279	182	558	498	558	457	279	55
17-7-2015	279	182	558	497	558	456	279	56
16-7-2015	279	182	558	498	558	457	279	58
15-7-2015	279	182	558	498	558	457	279	60
14-7-2015	279	183	558	498	558	457	279	63
13-7-2015	279	182	558	498	558	457	279	65
12-7-2015	279	182	558	498	558	457	279	69

=====
 HARDDISK USAGE NIX_PRD_ORCDB2
 =====

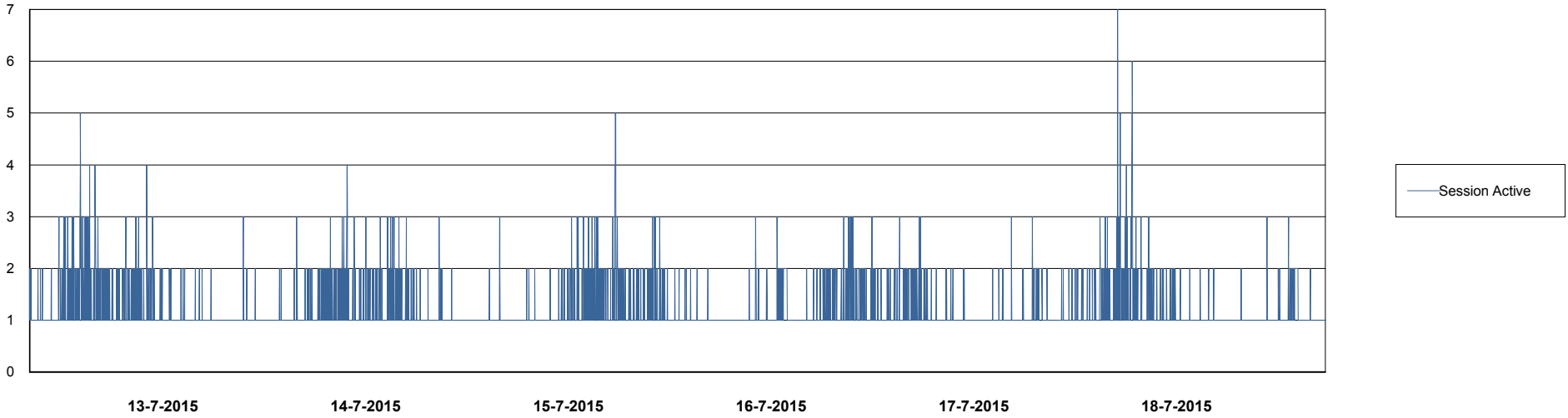
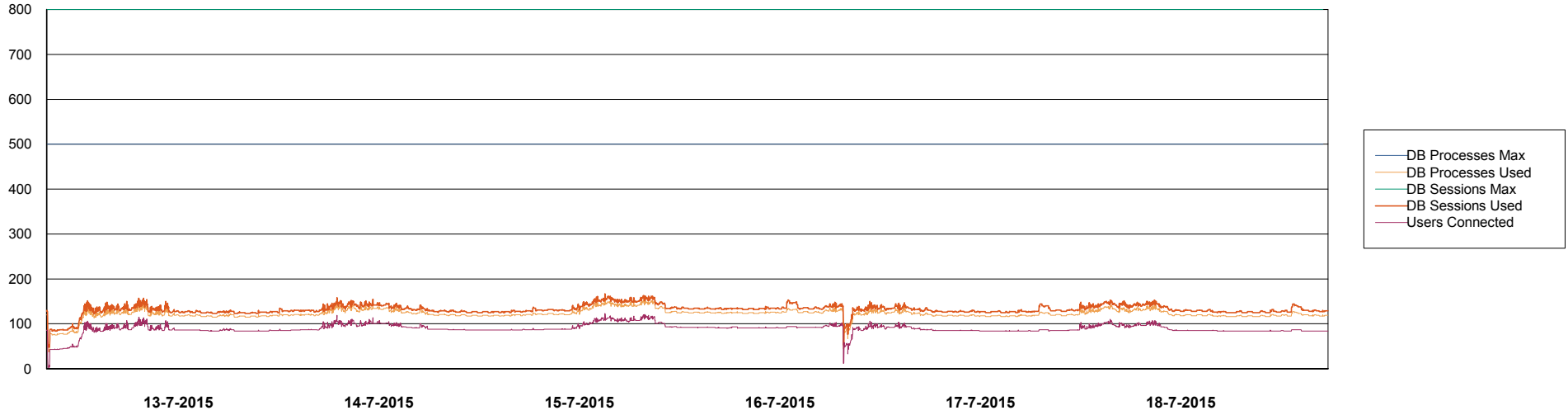
	Total disk space on C (GB)	Free disk space on C (GB)	Total disk space on E (GB)	Free disk space on E (GB)	Total disk space on F (GB)	Free disk space on F (GB)	Total disk space on G (GB)	Free disk space on G (GB)
18-7-2015	279	235	558	405	558	458	279	88
17-7-2015	279	235	558	405	558	458	279	89
16-7-2015	279	237	558	404	558	458	279	91
15-7-2015	279	238	558	405	558	458	279	94
14-7-2015	279	238	558	405	558	458	279	96
13-7-2015	279	238	558	405	558	458	279	100
12-7-2015	279	238	558	405	558	458	279	103

Weekly SLA Customer Report

Customer NIX_Production
Database ID 51



DATABASE PERFORMANCE NIXDB_Production



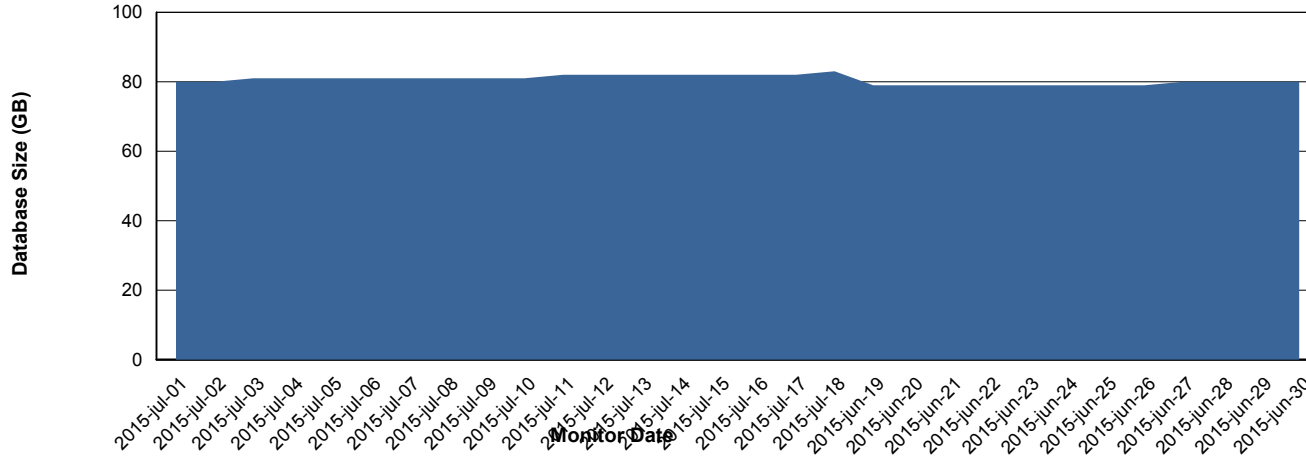
Weekly SLA Customer Report

Customer NIX_Production
 Database ID 51



=====
 DATABASE SIZE NIXDB_Production
 =====

Database growth over last month



=====
 DATABASE TABLESPACES NIXDB_Production
 =====

TOTAL DATABASE SIZE PER TABLESPACE

Date	Tablespace Name	Filesize (Gb)	Usedsize (Gb)	Percentage free
18-7-2015	ABSDATA	50	33	34
	INDX	100	49	51
17-7-2015	ABSDATA	50	33	34
	INDX	100	49	51
16-7-2015	ABSDATA	50	33	34
	INDX	100	49	51
15-7-2015	ABSDATA	50	33	34
	INDX	100	48	52
14-7-2015	ABSDATA	50	33	34
	INDX	100	48	52
13-7-2015	ABSDATA	50	33	34
	INDX	100	48	52
12-7-2015	ABSDATA	50	32	36
	INDX	100	48	52

Weekly SLA Customer Report

Customer NIX_Production
Database ID 51



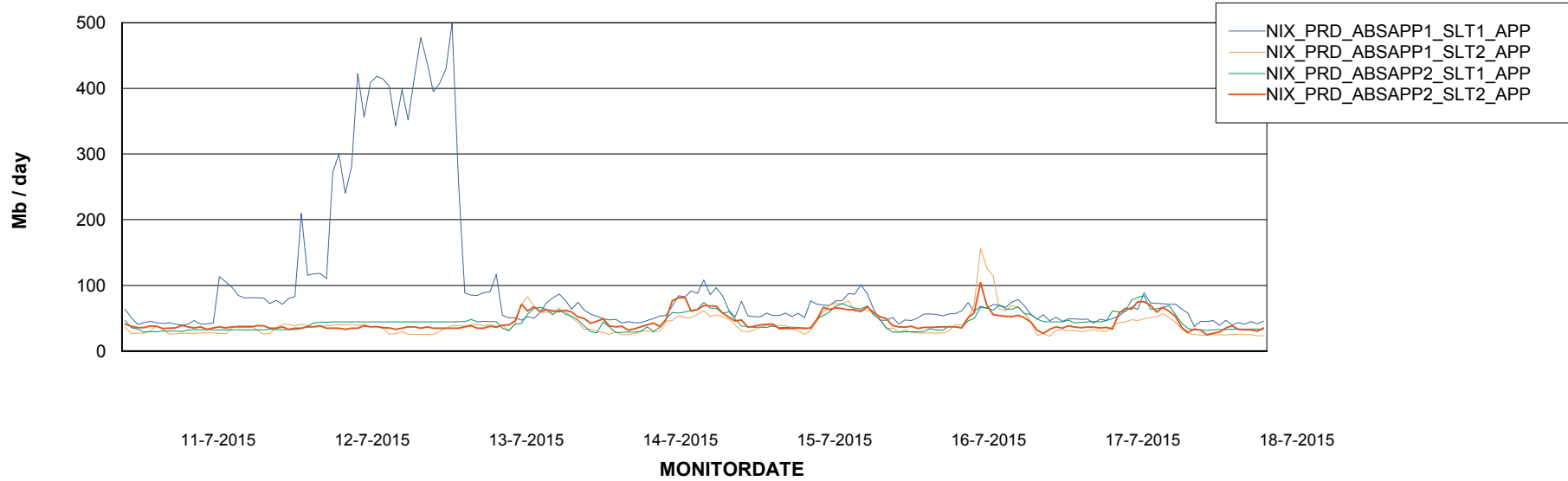
Weekly SLA Customer Report

Customer NIX_Production
Database ID 51



=====
ABSolute Application Server Services
=====

Avg memory used per ABS Server Service



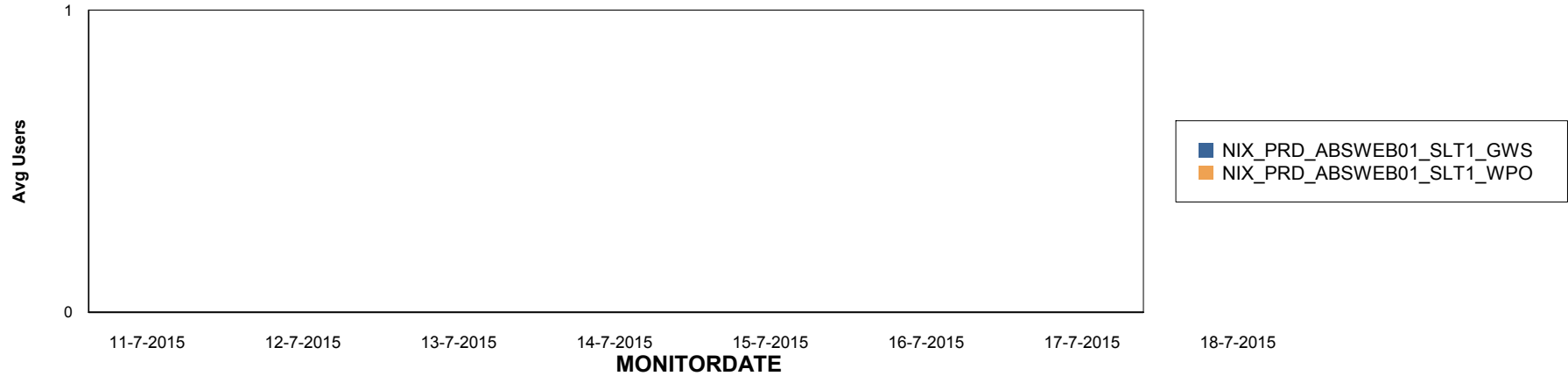
Weekly SLA Customer Report

Customer NIX_Production
Database ID 51

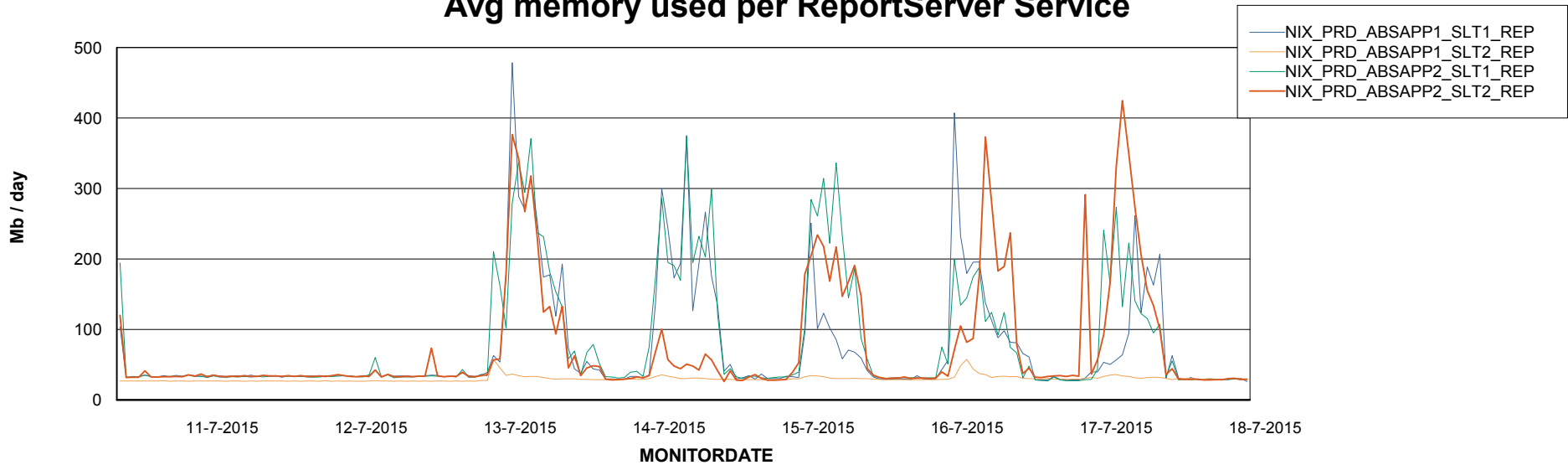


=====
ABSolute Application ReportServer Services
=====

Disaster per ReportServer



Avg memory used per ReportServer Service



Weekly SLA Customer Report

Customer NIX_Production
Database ID 51



Disaster per ABS component

