

# Weekly SLA Customer Report

Customer NIX\_Production  
Database ID 51



=====  
HARDDISK USAGE NIX\_PRD\_ABSAPP1  
=====

	Total disk space on C (GB)	Free disk space on C (GB)
11-7-2015	200	179
10-7-2015	200	179
9-7-2015	200	179
8-7-2015	200	179
7-7-2015	200	179
6-7-2015	200	179
5-7-2015	200	179

=====  
HARDDISK USAGE NIX\_PRD\_ABSAPP2  
=====

	Total disk space on C (GB)	Free disk space on C (GB)
11-7-2015	200	179
10-7-2015	200	179
9-7-2015	200	179
8-7-2015	200	179
7-7-2015	200	179
6-7-2015	200	179
5-7-2015	200	179

## Weekly SLA Customer Report

Customer      NIX\_Production  
 Database ID    51



=====  
 HARDDISK USAGE    NIX\_PRD\_ABSWEB01  
 =====

	Total disk space on C (GB)	Free disk space on C (GB)
11-7-2015	300	284
10-7-2015	300	284
9-7-2015	300	284
8-7-2015	300	284
7-7-2015	300	285
6-7-2015	300	285
5-7-2015	300	285

=====  
 HARDDISK USAGE    NIX\_PRD\_ORACLE\_B11  
 =====

	Total disk space on C (GB)	Free disk space on C (GB)	Total disk space on E (GB)	Free disk space on E (GB)	Total disk space on F (GB)	Free disk space on F (GB)	Total disk space on G (GB)	Free disk space on G (GB)
11-7-2015	279	204	558	400	558	457	279	238
10-7-2015	279	204	558	400	558	458	279	238
9-7-2015	279	204	558	400	558	458	279	238
8-7-2015	279	204	558	400	558	458	279	238
7-7-2015	279	204	558	400	558	457	279	238
6-7-2015	279	206	558	400	558	458	279	239
5-7-2015	279	206	558	400	558	458	279	239

## Weekly SLA Customer Report

Customer      NIX\_Production  
 Database ID    51



=====  
 HARDDISK USAGE    NIX\_PRD\_ORCDB1  
 =====

	Total disk space on C (GB)	Free disk space on C (GB)	Total disk space on E (GB)	Free disk space on E (GB)	Total disk space on F (GB)	Free disk space on F (GB)	Total disk space on G (GB)	Free disk space on G (GB)
11-7-2015	279	182	558	498	558	457	279	70
10-7-2015	279	182	558	498	558	457	279	72
9-7-2015	279	182	558	498	558	457	279	74
8-7-2015	279	183	558	497	558	456	279	76
7-7-2015	279	183	558	493	558	451	279	78
6-7-2015	279	184	558	497	558	456	279	84
5-7-2015	279	184	558	499	558	458	279	87

=====  
 HARDDISK USAGE    NIX\_PRD\_ORCDB2  
 =====

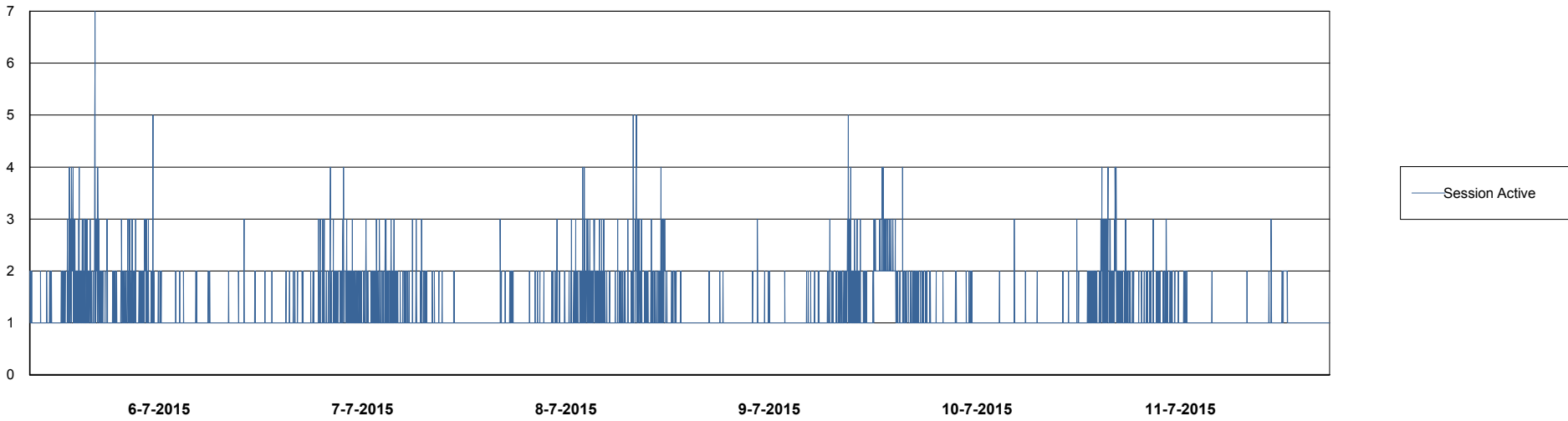
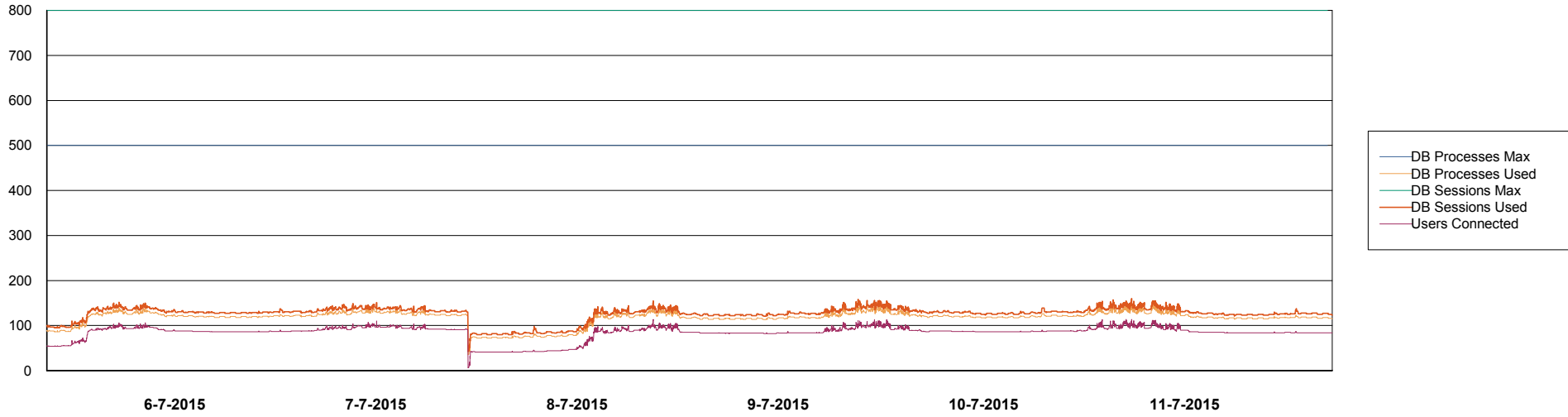
	Total disk space on C (GB)	Free disk space on C (GB)	Total disk space on E (GB)	Free disk space on E (GB)	Total disk space on F (GB)	Free disk space on F (GB)	Total disk space on G (GB)	Free disk space on G (GB)
11-7-2015	279	238	558	405	558	458	279	103
10-7-2015	279	238	558	405	558	458	279	105
9-7-2015	279	238	558	405	558	458	279	107
8-7-2015	279	238	558	405	558	458	279	109
7-7-2015	279	238	558	405	558	458	279	111
6-7-2015	279	238	558	406	558	458	279	117
5-7-2015	279	238	558	406	558	458	279	120

# Weekly SLA Customer Report

Customer NIX\_Production  
Database ID 51



DATABASE PERFORMANCE NIXDB\_Production



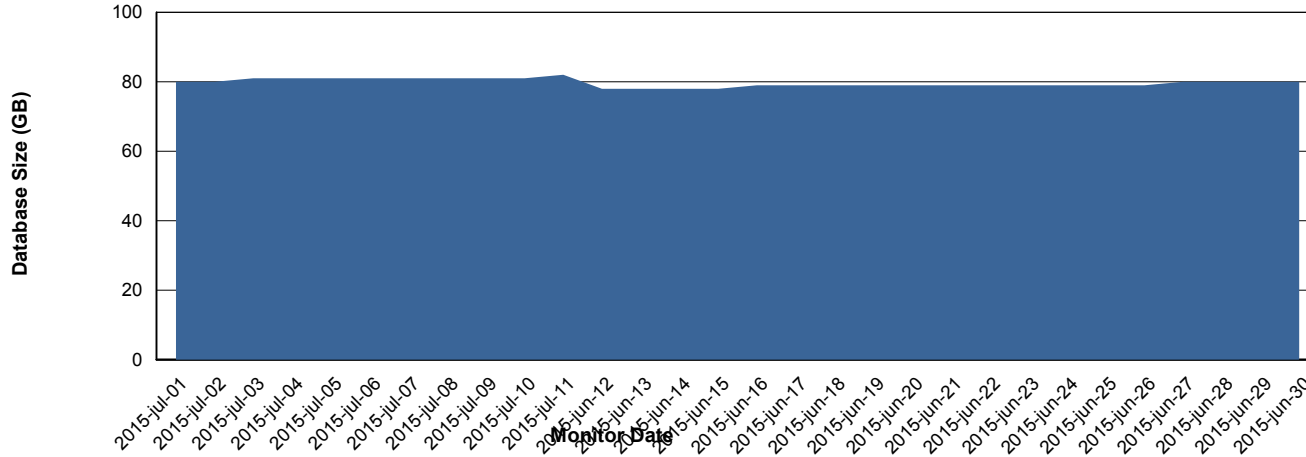
# Weekly SLA Customer Report

Customer NIX\_Production  
 Database ID 51



=====  
 DATABASE SIZE NIXDB\_Production  
 =====

## Database growth over last month



=====  
 DATABASE TABLESPACES NIXDB\_Production  
 =====

### TOTAL DATABASE SIZE PER TABLESPACE

Date	Tablespace Name	Filesize (Gb)	Usedsize (Gb)	Percentage free
11-7-2015	ABSDATA	50	32	36
	INDX	100	48	52
10-7-2015	ABSDATA	50	32	36
	INDX	100	48	52
9-7-2015	ABSDATA	50	32	36
	INDX	100	48	52
8-7-2015	ABSDATA	50	32	36
	INDX	100	48	52
7-7-2015	ABSDATA	50	32	36
	INDX	100	48	52
6-7-2015	ABSDATA	50	32	36
	INDX	100	48	52
5-7-2015	ABSDATA	50	32	36
	INDX	100	47	53

# Weekly SLA Customer Report

---

Customer NIX\_Production  
Database ID 51



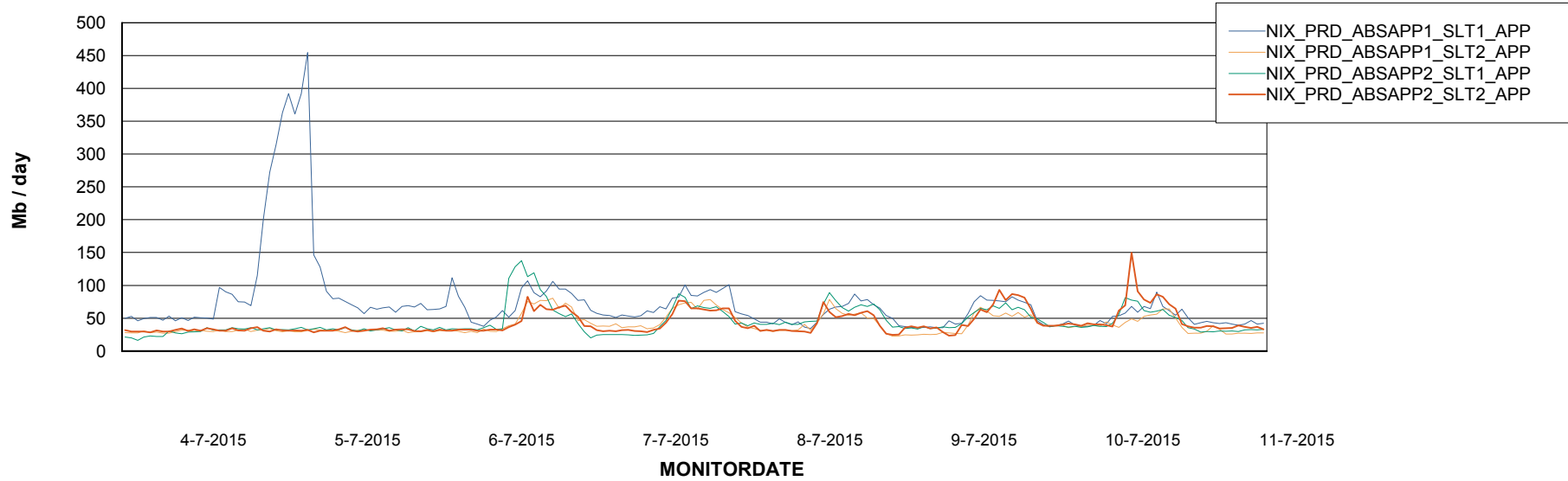
# Weekly SLA Customer Report

Customer NIX\_Production  
Database ID 51



=====  
ABSolute Application Server Services  
=====

## Avg memory used per ABS Server Service



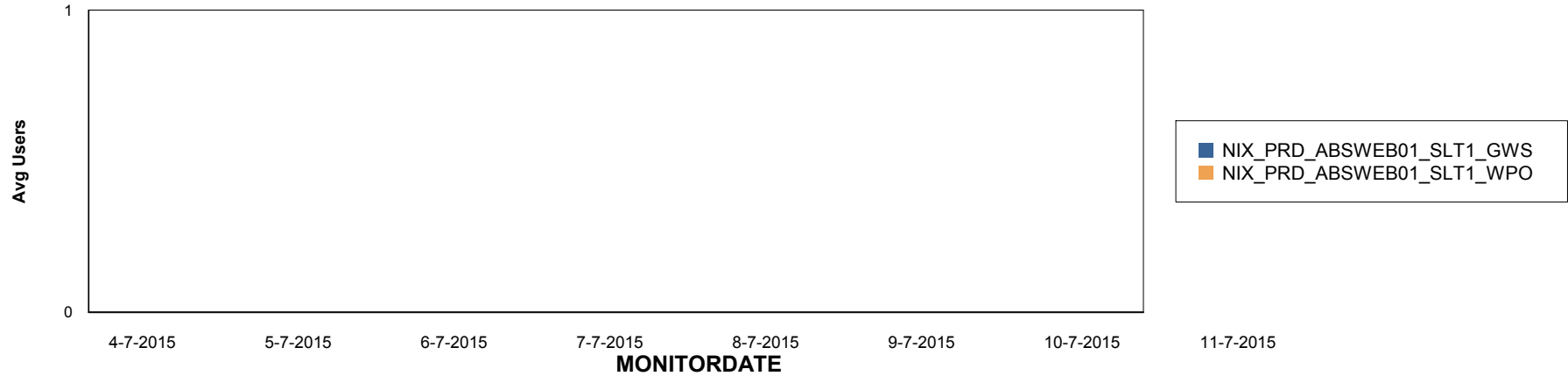
# Weekly SLA Customer Report

Customer NIX\_Production  
Database ID 51

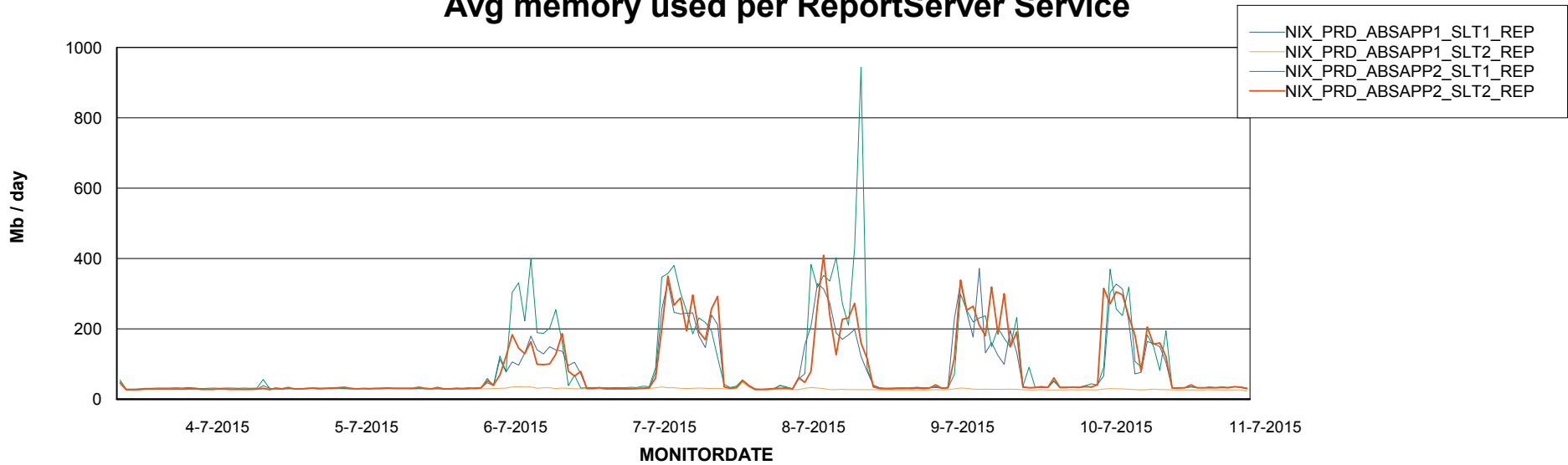


=====  
ABSolute Application ReportServer Services  
=====

## Disaster per ReportServer



## Avg memory used per ReportServer Service



# Weekly SLA Customer Report

Customer NIX\_Production  
Database ID 51



## Disaster per ABS component

