

Weekly SLA Customer Report

Customer NIX_Production
Database ID 51



=====
HARDDISK USAGE NIX_PRD_ABSAPP1
=====

	Total disk space on C (GB)	Free disk space on C (GB)
4-7-2015	200	179
3-7-2015	200	179
2-7-2015	200	179
1-7-2015	200	179
30-6-2015	200	179
29-6-2015	200	179
28-6-2015	200	179

=====
HARDDISK USAGE NIX_PRD_ABSAPP2
=====

	Total disk space on C (GB)	Free disk space on C (GB)
4-7-2015	200	179
3-7-2015	200	179
2-7-2015	200	179
1-7-2015	200	179
30-6-2015	200	179
29-6-2015	200	179
28-6-2015	200	180

Weekly SLA Customer Report

Customer NIX_Production
 Database ID 51



=====
 HARDDISK USAGE NIX_PRD_ABSWEB01
 =====

	Total disk space on C (GB)	Free disk space on C (GB)
4-7-2015	300	285
3-7-2015	300	284
2-7-2015	300	284
1-7-2015	300	284
30-6-2015	300	284
29-6-2015	300	284
28-6-2015	300	284

=====
 HARDDISK USAGE NIX_PRD_ORACLE_B11
 =====

	Total disk space on C (GB)	Free disk space on C (GB)	Total disk space on E (GB)	Free disk space on E (GB)	Total disk space on F (GB)	Free disk space on F (GB)	Total disk space on G (GB)	Free disk space on G (GB)
4-7-2015	279	206	558	400	558	458	279	239
3-7-2015	279	206	558	400	558	458	279	239
2-7-2015	279	206	558	400	558	458	279	239
1-7-2015	279	206	558	400	558	458	279	239
30-6-2015	279	206	558	400	558	458	279	239
29-6-2015	279	206	558	401	558	458	279	239
28-6-2015	279	206	558	401	558	458	279	239

Weekly SLA Customer Report

Customer NIX_Production
 Database ID 51



=====
 HARDDISK USAGE NIX_PRD_ORCDB1
 =====

	Total disk space on C (GB)	Free disk space on C (GB)	Total disk space on E (GB)	Free disk space on E (GB)	Total disk space on F (GB)	Free disk space on F (GB)	Total disk space on G (GB)	Free disk space on G (GB)
4-7-2015	279	185	558	499	558	458	279	88
3-7-2015	279	185	558	499	558	458	279	88
2-7-2015	279	185	558	499	558	458	279	91
1-7-2015	279	196	558	499	558	458	279	94
30-6-2015	279	212	558	499	558	458	279	96
29-6-2015	279	212	558	499	558	458	279	98
28-6-2015	279	212	558	499	558	458	279	100

=====
 HARDDISK USAGE NIX_PRD_ORCDB2
 =====

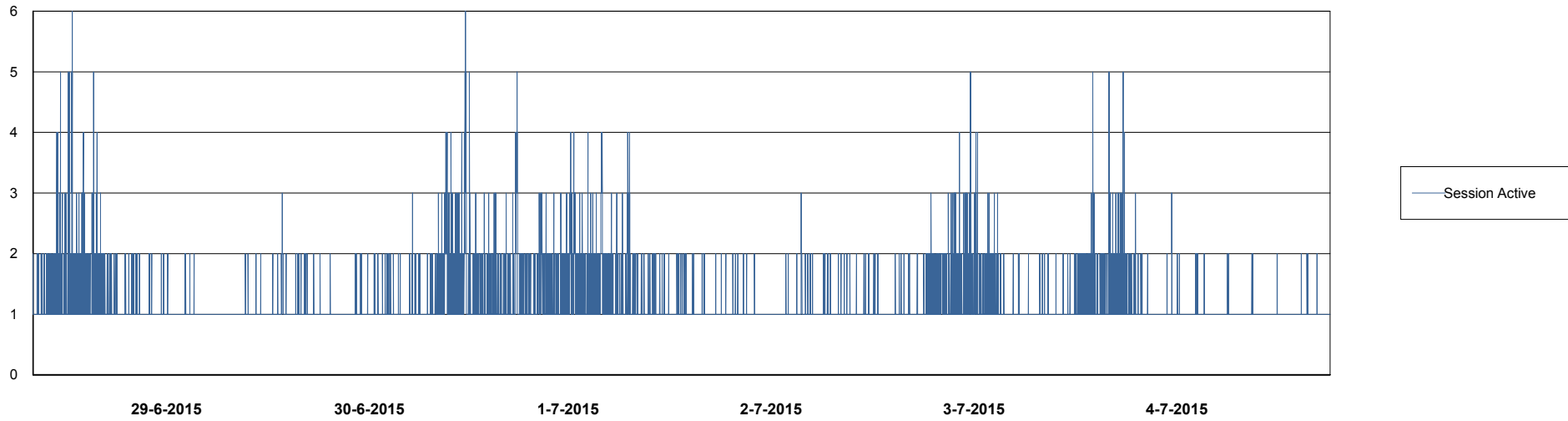
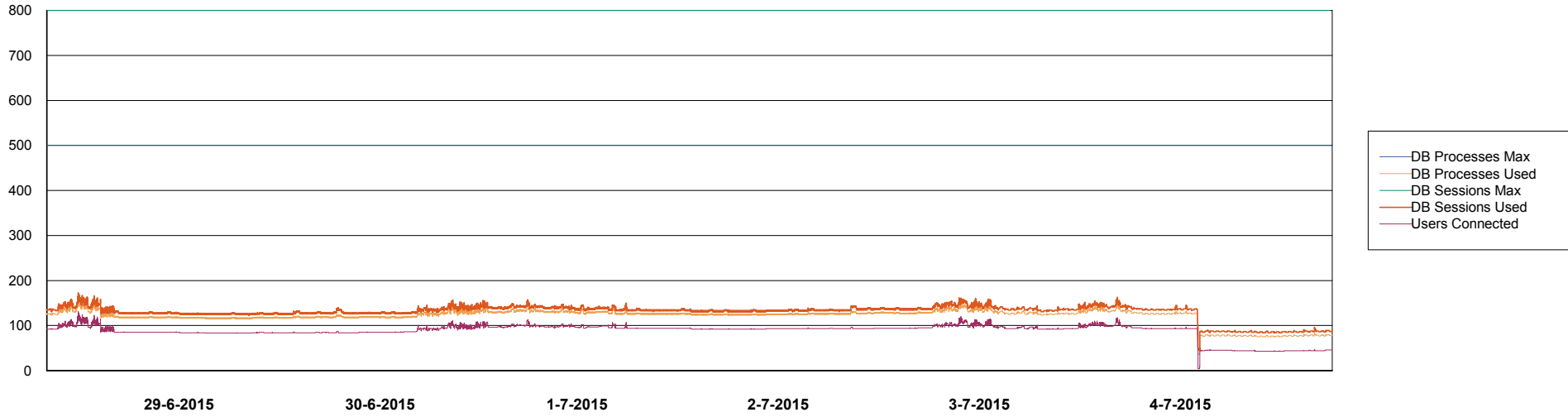
	Total disk space on C (GB)	Free disk space on C (GB)	Total disk space on E (GB)	Free disk space on E (GB)	Total disk space on F (GB)	Free disk space on F (GB)	Total disk space on G (GB)	Free disk space on G (GB)
4-7-2015	279	238	558	406	558	458	279	121
3-7-2015	279	238	558	406	558	458	279	121
2-7-2015	279	238	558	406	558	458	279	124
1-7-2015	279	238	558	406	558	458	279	126
30-6-2015	279	238	558	406	558	458	279	128
29-6-2015	279	238	558	406	558	458	279	131
28-6-2015	279	238	558	406	558	458	279	133

Weekly SLA Customer Report

Customer NIX_Production
Database ID 51



DATABASE PERFORMANCE NIXDB_Production



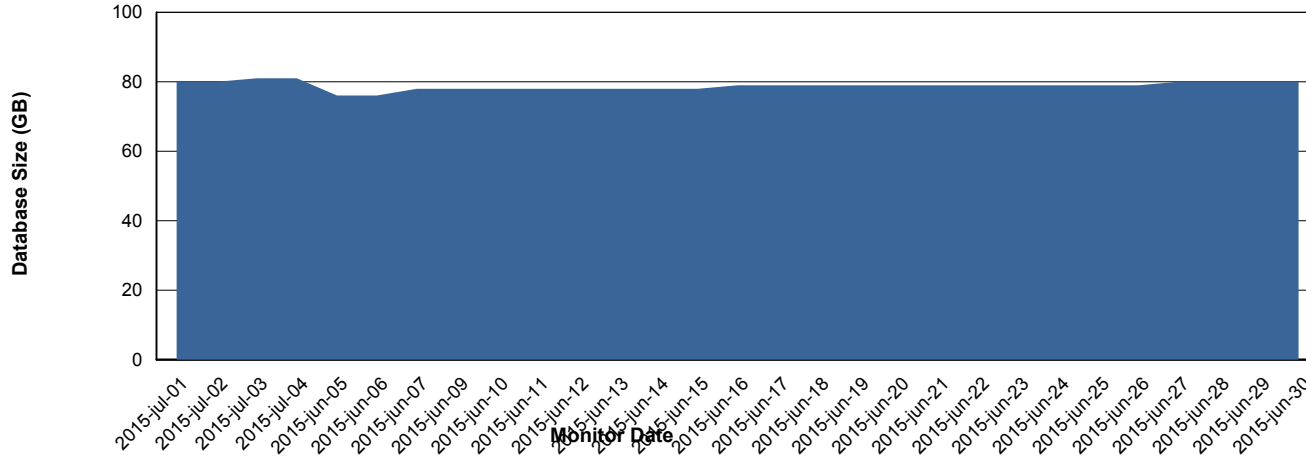
Weekly SLA Customer Report

Customer NIX_Production
 Database ID 51



=====
 DATABASE SIZE NIXDB_Production
 =====

Database growth over last month



=====
 DATABASE TABLESPACES NIXDB_Production
 =====

TOTAL DATABASE SIZE PER TABLESPACE

Date	Tablespace Name	Filesize (Gb)	Usedsize (Gb)	Percentage free
4-7-2015	ABSDATA	50	32	36
	INDX	100	47	53
3-7-2015	ABSDATA	50	32	36
	INDX	100	47	53
2-7-2015	ABSDATA	50	32	36
	INDX	100	47	53
1-7-2015	ABSDATA	50	32	36
	INDX	100	47	53
30-6-2015	ABSDATA	50	32	36
	INDX	100	47	53
29-6-2015	ABSDATA	50	32	36
	INDX	100	47	53
28-6-2015	ABSDATA	50	32	36
	INDX	100	47	53

Weekly SLA Customer Report

Customer NIX_Production
Database ID 51



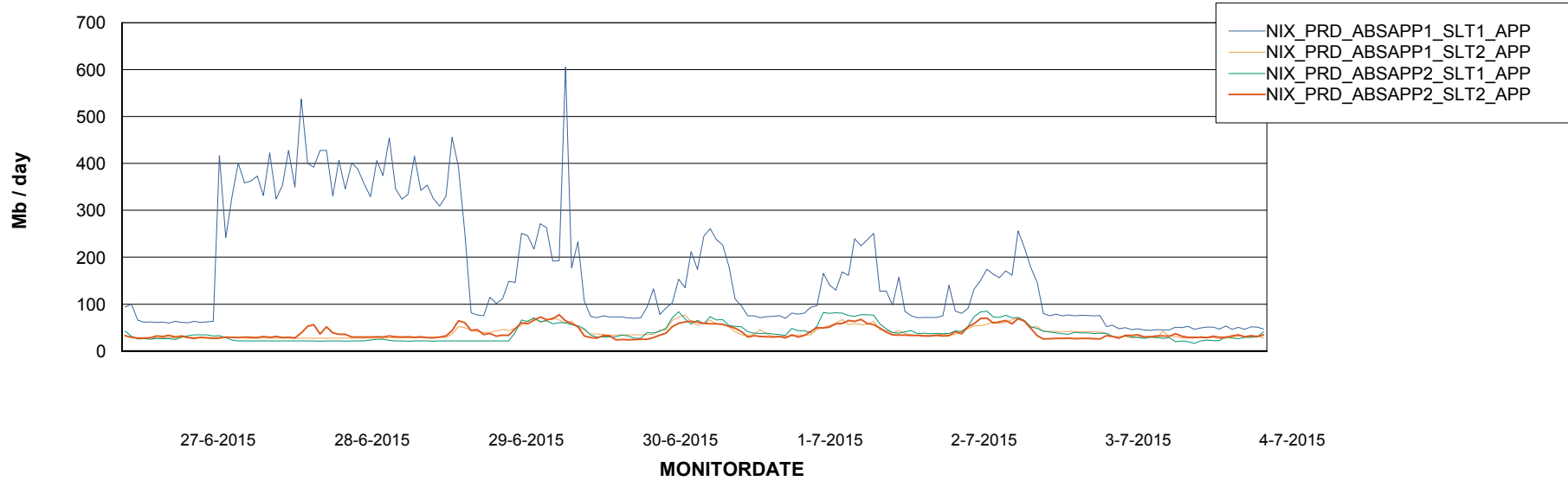
Weekly SLA Customer Report

Customer NIX_Production
Database ID 51



=====
ABSolute Application Server Services
=====

Avg memory used per ABS Server Service



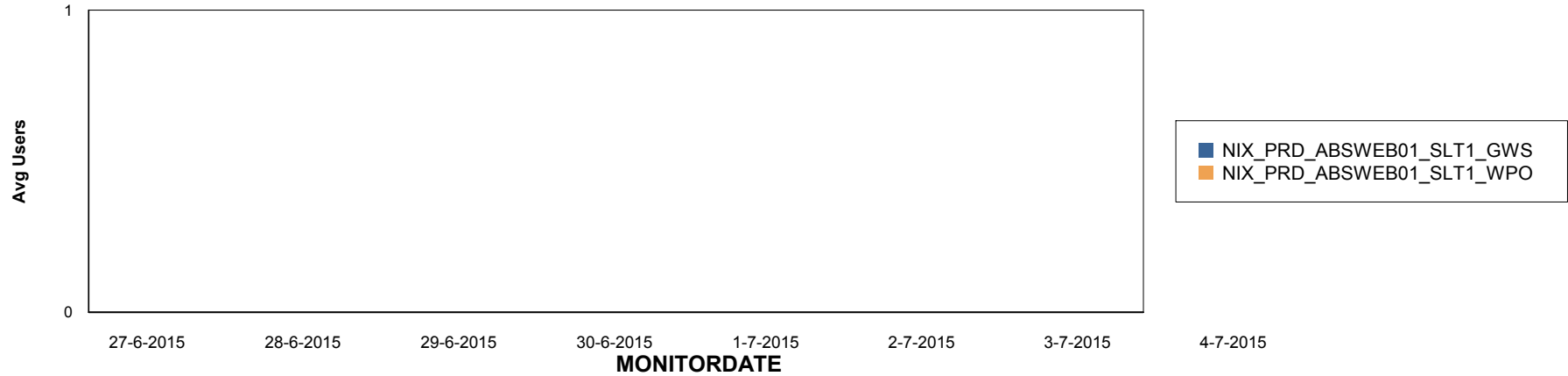
Weekly SLA Customer Report

Customer NIX_Production
Database ID 51

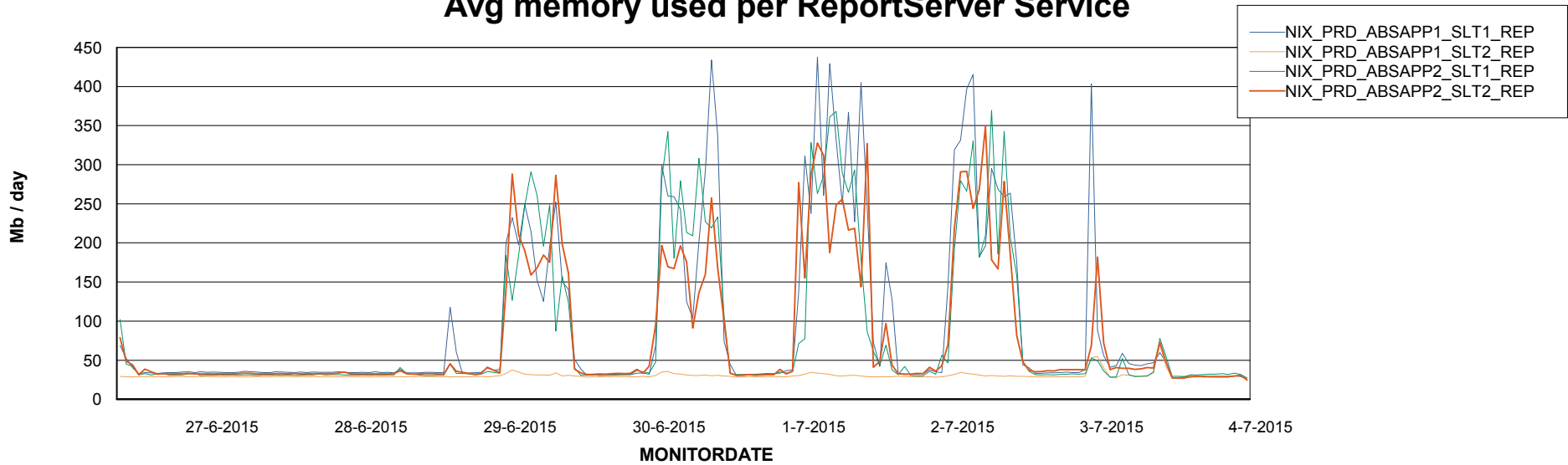


=====
ABSolute Application ReportServer Services
=====

Disaster per ReportServer



Avg memory used per ReportServer Service



Weekly SLA Customer Report

Customer NIX_Production
Database ID 51



Disaster per ABS component

