

Weekly SLA Customer Report

Customer JWR Production
 Database ID 43



=====
 HARDDISK USAGE JWR_PRD_JWR-ABS-01
 =====

	Used disk space on / (GB)	Total disk space on / (GB)	Free disk space on / (GB)
20-6-2015	27	49	19
19-6-2015	27	49	19
18-6-2015	27	49	19
17-6-2015	27	49	19
16-6-2015	27	49	19
15-6-2015	29	49	18
14-6-2015	29	49	17

=====
 HARDDISK USAGE JWR_PRD_JWR-ABS-02
 =====

	Used disk space on / (GB)	Total disk space on / (GB)	Free disk space on / (GB)
20-6-2015	30	49	16
19-6-2015	30	49	16
18-6-2015	30	49	16
17-6-2015	30	49	16
16-6-2015	30	49	16
15-6-2015	30	49	16
14-6-2015	30	49	16

Weekly SLA Customer Report

Customer JWR Production
 Database ID 43



=====
 HARDDISK USAGE JWR_PRD_JWR-ODB-01
 =====

	Used disk space on / (GB)	Total disk space on / (GB)	Free disk space on / (GB)
20-6-2015	85	148	56
19-6-2015	85	148	56
18-6-2015	83	148	58
17-6-2015	83	148	58
16-6-2015	83	148	58
15-6-2015	83	148	58
14-6-2015	83	148	58

=====
 HARDDISK USAGE JWR_PRD_JWR-ODB-02
 =====

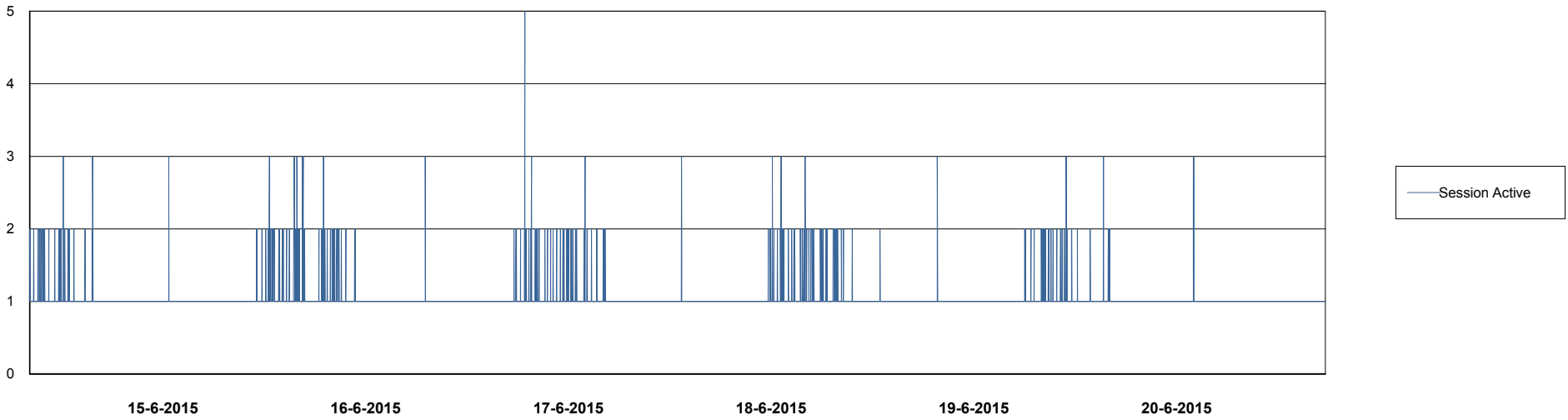
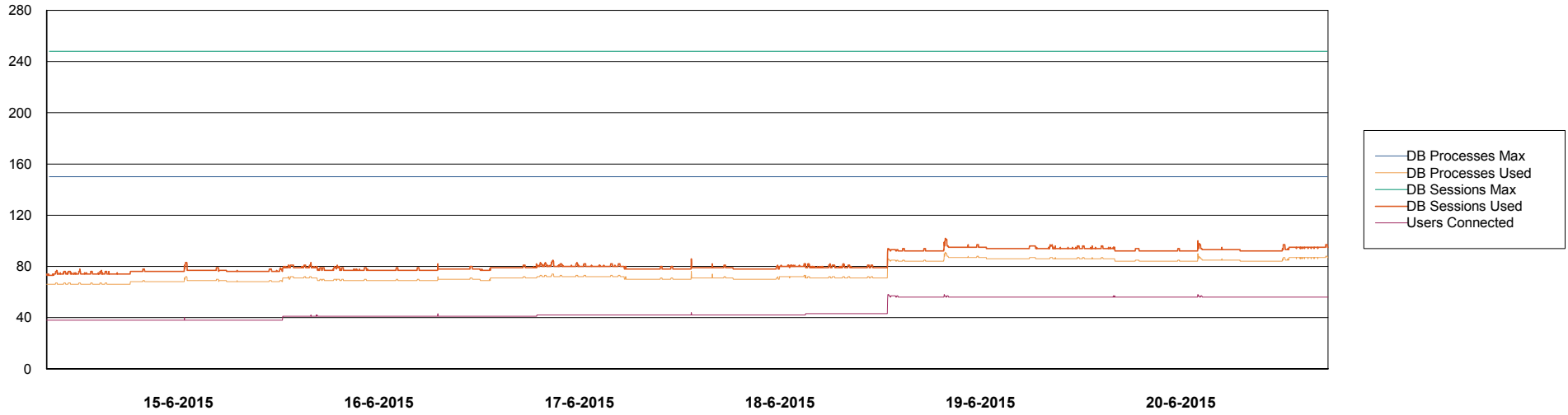
	Used disk space on / (GB)	Total disk space on / (GB)	Free disk space on / (GB)
20-6-2015	92	138	39
19-6-2015	92	138	39
18-6-2015	92	138	39
17-6-2015	92	138	39
16-6-2015	92	138	39
15-6-2015	93	138	38
14-6-2015	92	138	39

Weekly SLA Customer Report

Customer JWR Production
Database ID 43



DATABASE PERFORMANCE JWRDB_Production



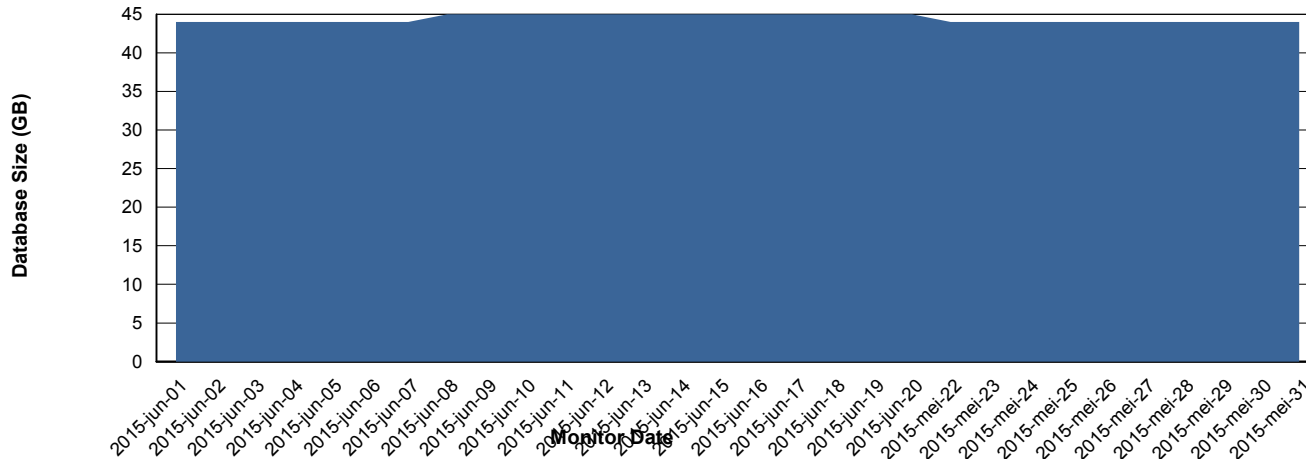
Weekly SLA Customer Report

Customer JWR Production
 Database ID 43



=====
 DATABASE SIZE JWRDB_Production
 =====

Database growth over last month



=====
 DATABASE TABLESPACES JWRDB_Production
 =====

TOTAL DATABASE SIZE PER TABLESPACE

Date	Tablespace Name	Filesize (Gb)	Usedsize (Gb)	Percentage free
20-6-2015	ABSDATA	18	13	28
	INDX	38	31	18
19-6-2015	ABSDATA	18	13	28
	INDX	38	31	18
18-6-2015	ABSDATA	18	13	28
	INDX	38	31	18
17-6-2015	ABSDATA	18	13	28
	INDX	38	31	18
16-6-2015	ABSDATA	18	13	28
	INDX	38	31	18
15-6-2015	ABSDATA	18	13	28
	INDX	38	31	18
14-6-2015	ABSDATA	18	13	28
	INDX	38	31	18

Weekly SLA Customer Report

Customer JWR Production
Database ID 43



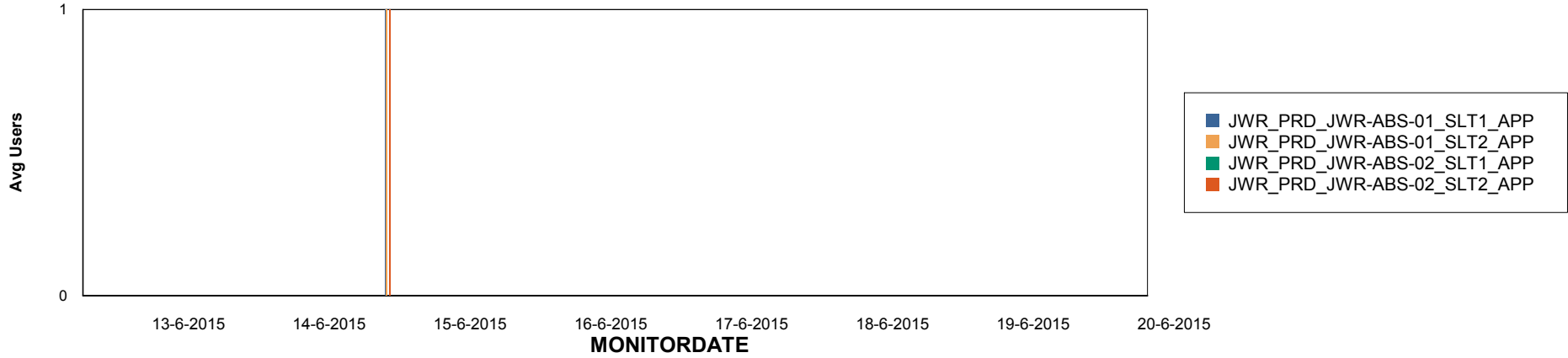
Weekly SLA Customer Report

Customer JWR Production
Database ID 43

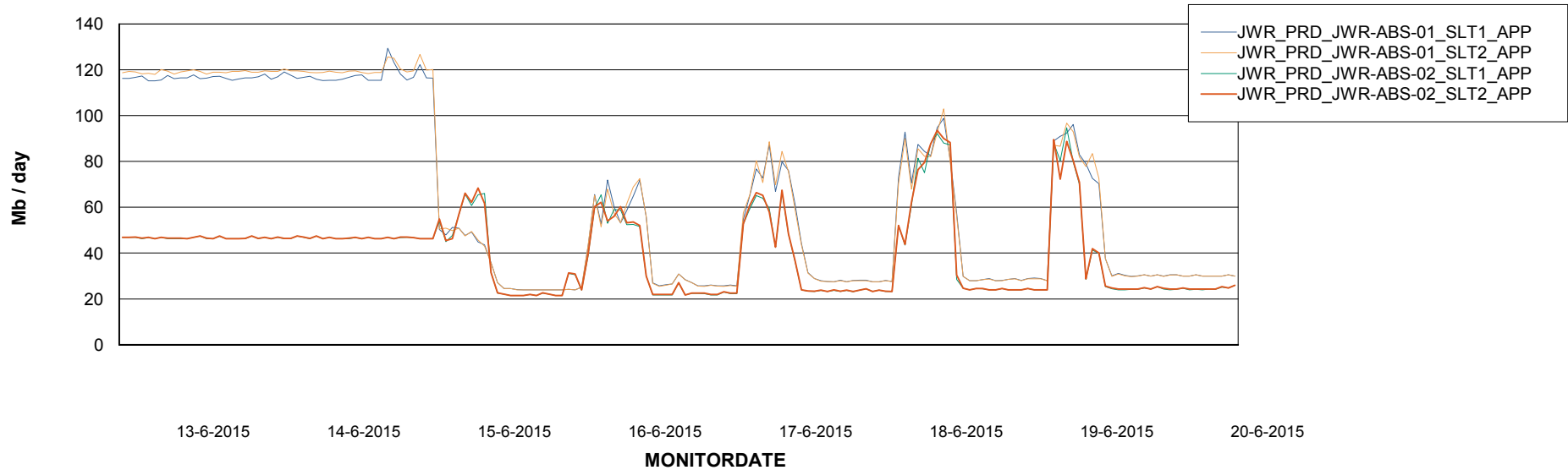


=====
ABSolute Application Server Services
=====

Disaster per ABS Server



Avg memory used per ABS Server Service



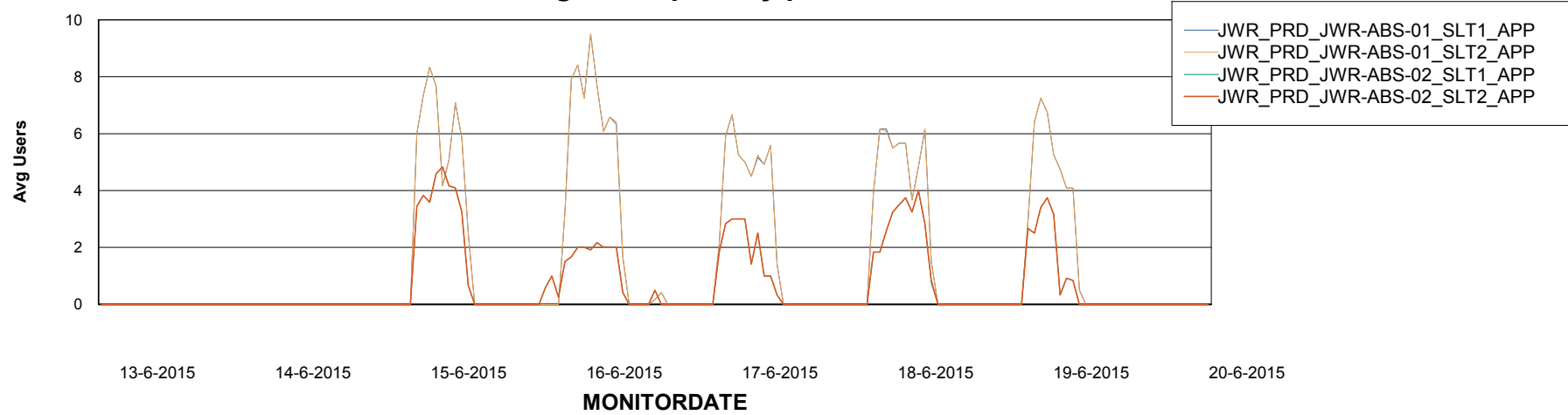
Weekly SLA Customer Report

Customer JWR Production
Database ID 43



=====
ABSolute Application Server Services
=====

Avg users per day per ABS server



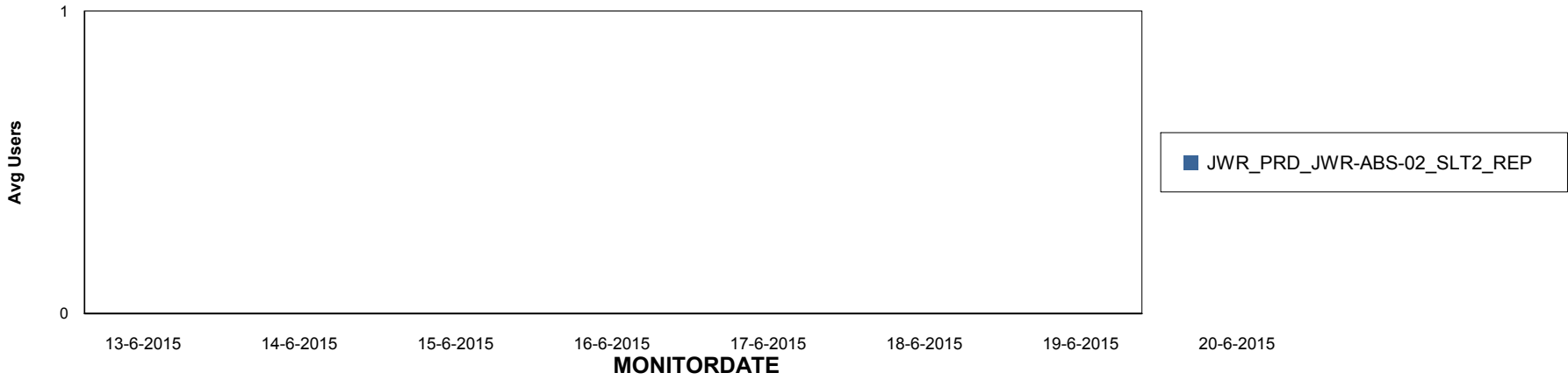
Weekly SLA Customer Report

Customer JWR Production
Database ID 43

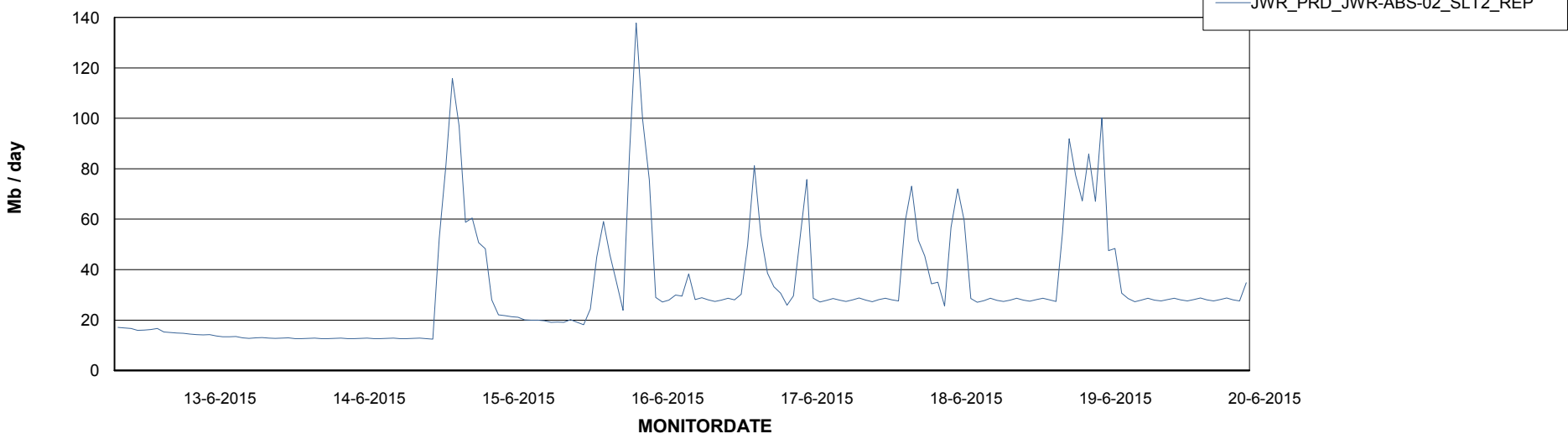


=====
ABSolute Application ReportServer Services
=====

Disaster per ReportServer



Avg memory used per ReportServer Service



Weekly SLA Customer Report

Customer JWR Production
Database ID 43



Disaster per ABS component

