

# Weekly SLA Customer Report

Customer JWR Production  
Database ID 43



=====  
HARDDISK USAGE JWR\_PRD\_JWR-ABS-01  
=====

	Used disk space on / (GB)	Total disk space on / (GB)	Free disk space on / (GB)
13-6-2015	29	49	17
12-6-2015	29	49	17
11-6-2015	28	49	19
10-6-2015	28	49	19
9-6-2015	29	49	18
8-6-2015	29	49	17
7-6-2015	29	49	17

=====  
HARDDISK USAGE JWR\_PRD\_JWR-ABS-02  
=====

	Used disk space on / (GB)	Total disk space on / (GB)	Free disk space on / (GB)
13-6-2015	30	49	17
12-6-2015	30	49	17
11-6-2015	30	49	17
10-6-2015	30	49	17
9-6-2015	30	49	17
8-6-2015	30	49	17
7-6-2015	30	49	17

## Weekly SLA Customer Report

Customer      JWR Production  
 Database ID    43



=====

HARDDISK USAGE    JWR\_PRD\_JWR-ODB-01

=====

	Used disk space on / (GB)	Total disk space on / (GB)	Free disk space on / (GB)
13-6-2015	83	148	58
12-6-2015	83	148	58
11-6-2015	83	148	58
10-6-2015	83	148	57
9-6-2015	83	148	58
8-6-2015	83	148	58
7-6-2015	83	148	58

=====

HARDDISK USAGE    JWR\_PRD\_JWR-ODB-02

=====

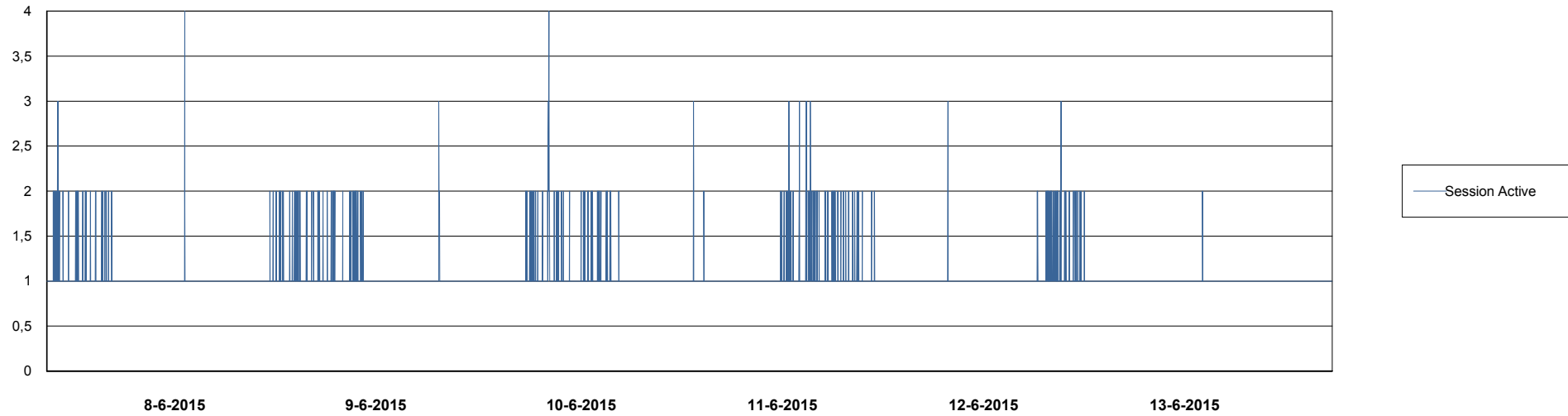
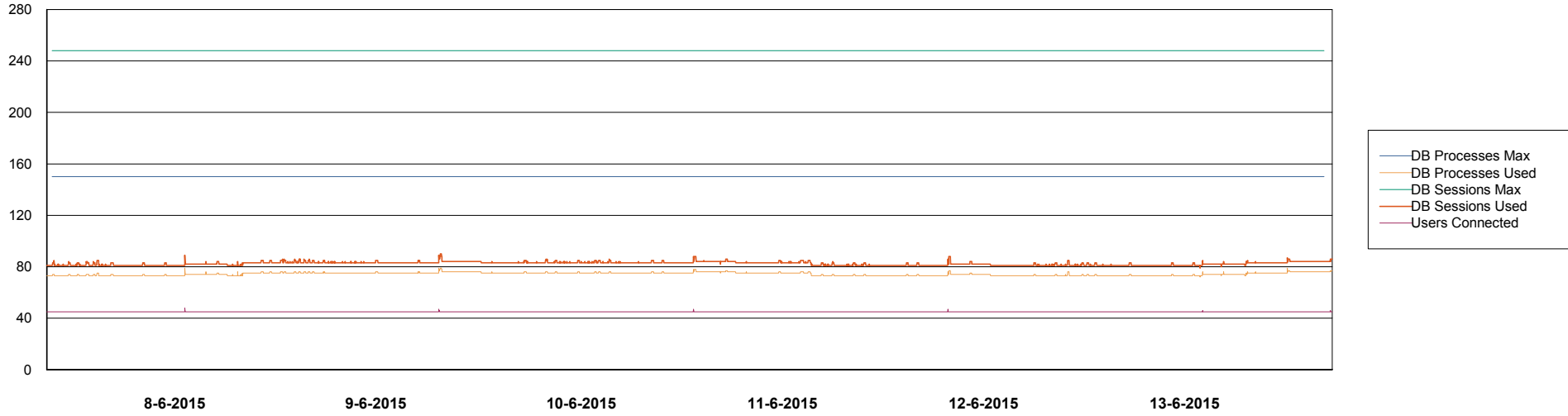
	Used disk space on / (GB)	Total disk space on / (GB)	Free disk space on / (GB)
13-6-2015	92	138	39
12-6-2015	92	138	39
11-6-2015	93	138	38
10-6-2015	93	138	38
9-6-2015	92	138	38
8-6-2015	93	138	38
7-6-2015	92	138	39

# Weekly SLA Customer Report

Customer JWR Production  
Database ID 43



DATABASE PERFORMANCE JWRDB\_Production



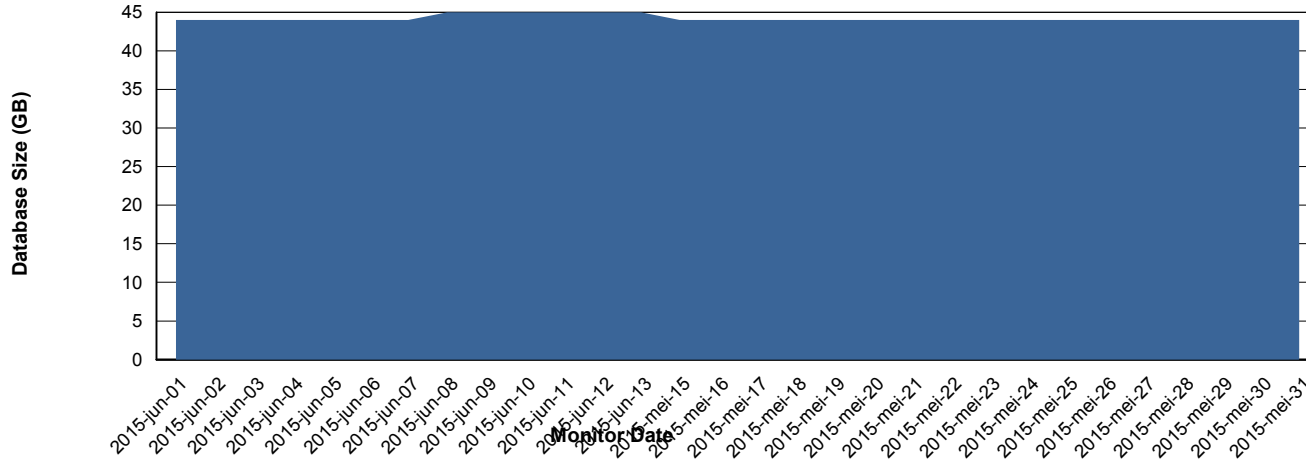
# Weekly SLA Customer Report

Customer JWR Production  
 Database ID 43



=====  
 DATABASE SIZE JWRDB\_Production  
 =====

## Database growth over last month



=====  
 DATABASE TABLESPACES JWRDB\_Production  
 =====

### TOTAL DATABASE SIZE PER TABLESPACE

Date	Tablespace Name	Filesize (Gb)	Usedsize (Gb)	Percentage free
13-6-2015	ABSDATA	18	13	28
	INDX	38	31	18
12-6-2015	ABSDATA	18	13	28
	INDX	38	31	18
11-6-2015	ABSDATA	18	13	28
	INDX	38	31	18
10-6-2015	ABSDATA	18	13	28
	INDX	38	31	18
9-6-2015	ABSDATA	18	13	28
	INDX	38	31	18
8-6-2015	ABSDATA	18	13	28
	INDX	38	31	18
7-6-2015	ABSDATA	18	13	28
	INDX	38	31	18

# Weekly SLA Customer Report

---

Customer     JWR Production  
Database ID   43



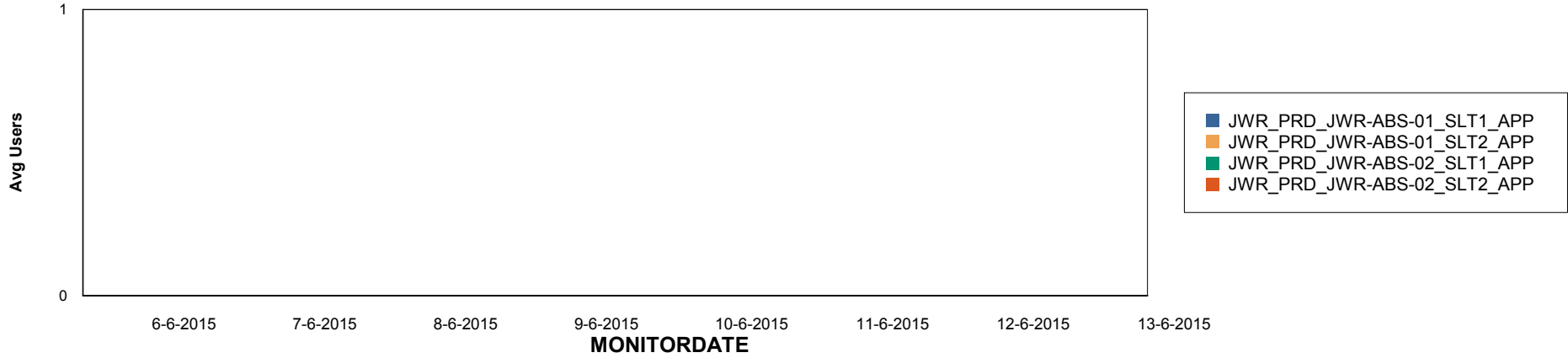
# Weekly SLA Customer Report

Customer JWR Production  
Database ID 43

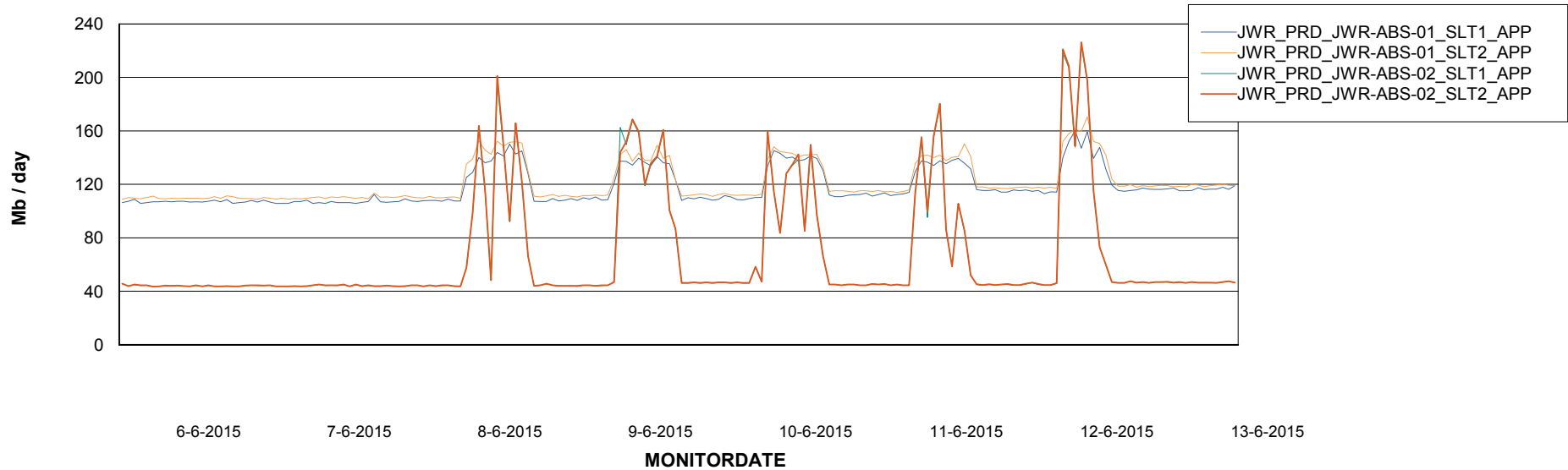


## ABSolute Application Server Services

### Disaster per ABS Server



### Avg memory used per ABS Server Service



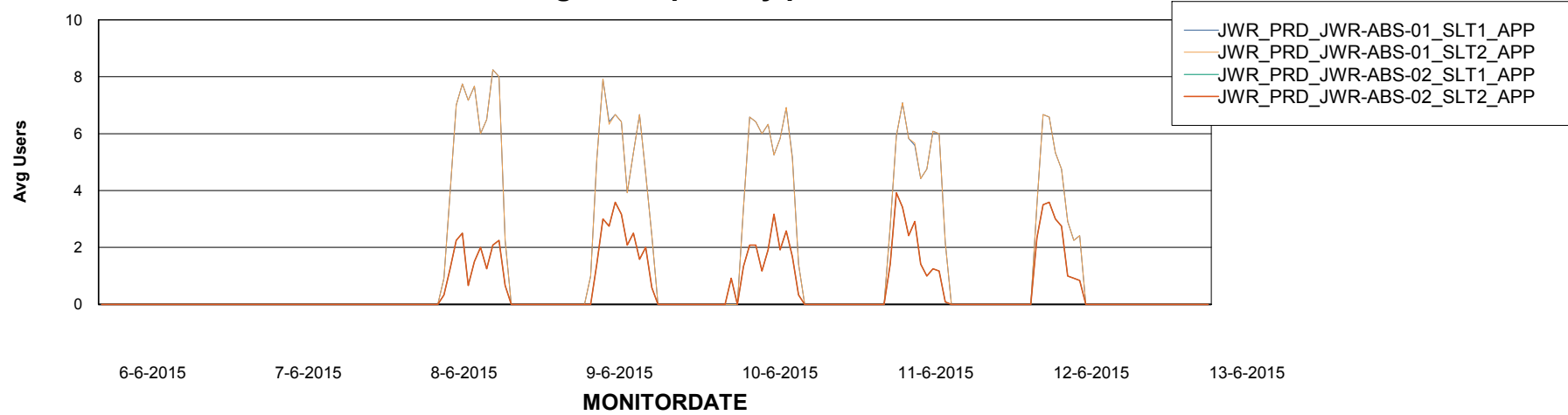
# Weekly SLA Customer Report

Customer JWR Production  
Database ID 43



=====  
ABSolute Application Server Services  
=====

### Avg users per day per ABS server



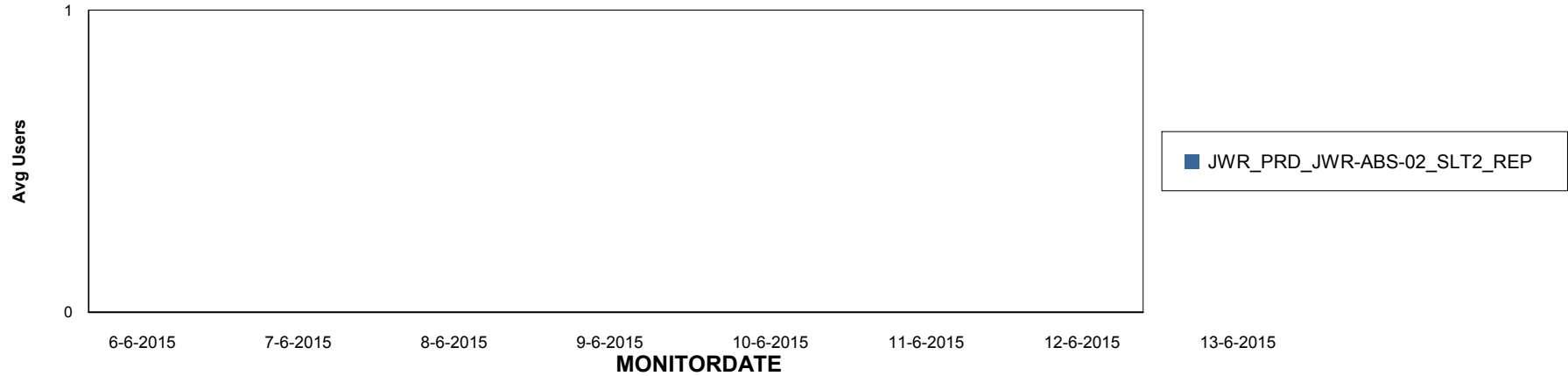
# Weekly SLA Customer Report

Customer JWR Production  
Database ID 43

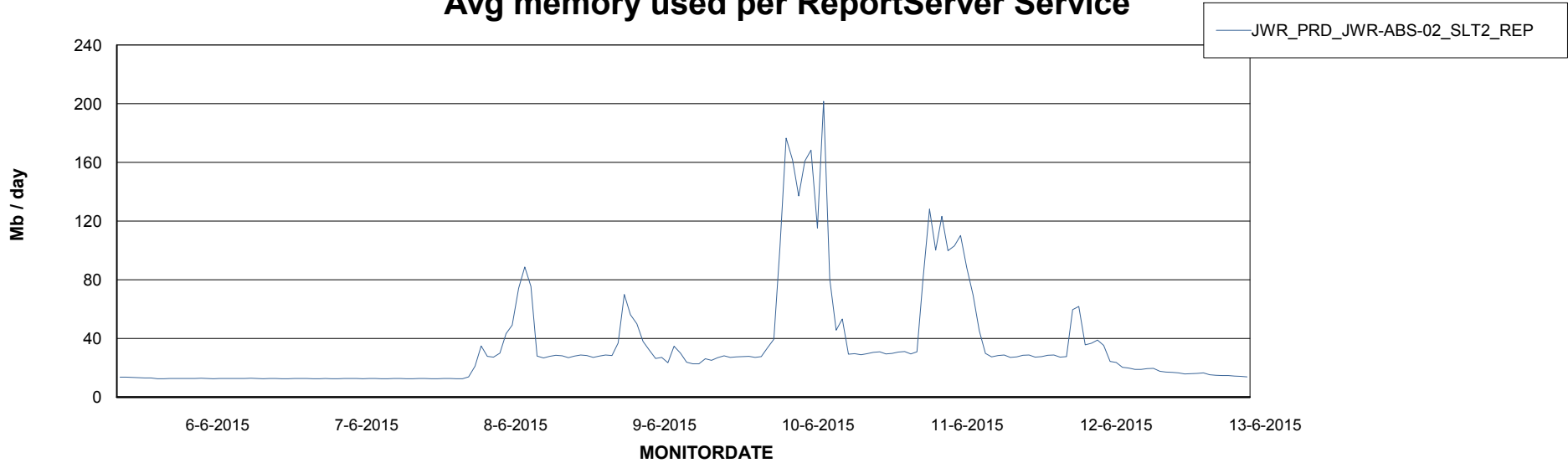


=====  
ABSolute Application ReportServer Services  
=====

## Disaster per ReportServer



## Avg memory used per ReportServer Service



# Weekly SLA Customer Report

Customer JWR Production  
Database ID 43



## Disaster per ABS component

