

Weekly SLA Customer Report

Customer AUJ_Production
 Database ID 41



=====
 HARDDISK USAGE AUJ_PRD_ORACLE_BI1
 =====

	Used disk space on \$1 (GB)	Total disk space on \$1 (GB)	Free disk space on \$1 (GB)
13-6-2015	412	526	86
12-6-2015	411	526	88
11-6-2015	410	526	88
10-6-2015	412	526	86
9-6-2015	414	526	84
8-6-2015	416	526	83
7-6-2015	424	526	74

=====
 HARDDISK USAGE AUJ_PRD_ORACLE1
 =====

	Used disk space on \$1 (GB)	Total disk space on \$1 (GB)	Free disk space on \$1 (GB)	Used disk space on /abs2 (GB)	Used disk space on /bk (GB)
13-6-2015	66	290	67	242	611
12-6-2015	66	290	67	242	556
11-6-2015	66	290	67	242	546
10-6-2015	66	290	67	242	547
9-6-2015	66	290	67	242	505
8-6-2015	66	290	67	242	497
7-6-2015	66	290	67	242	496

Weekly SLA Customer Report

Customer AUJ_Production
Database ID 41



HARDDISK USAGE AUJ_PRD_ORACLE2

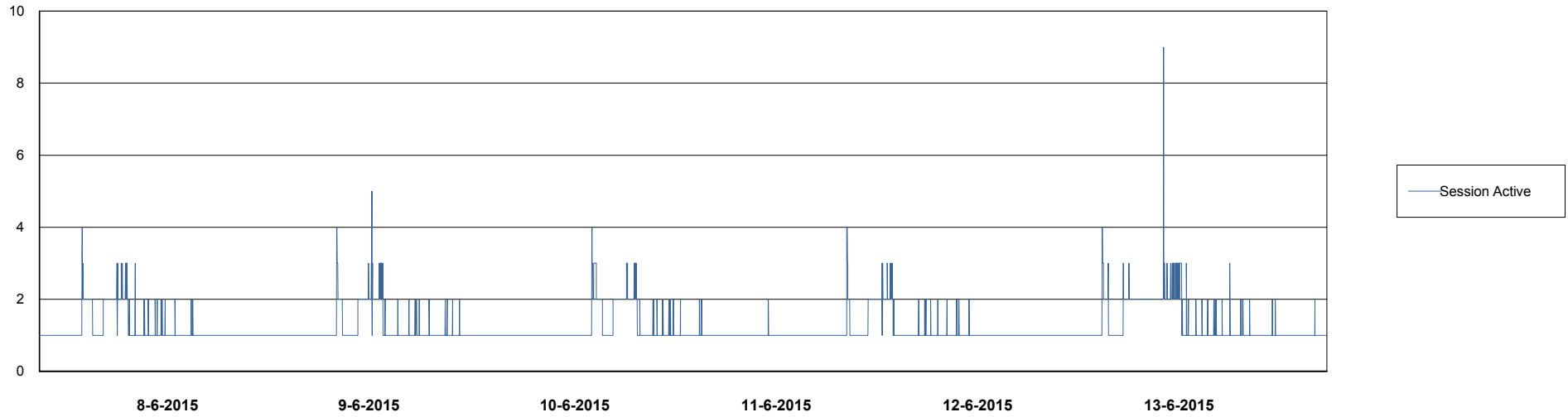
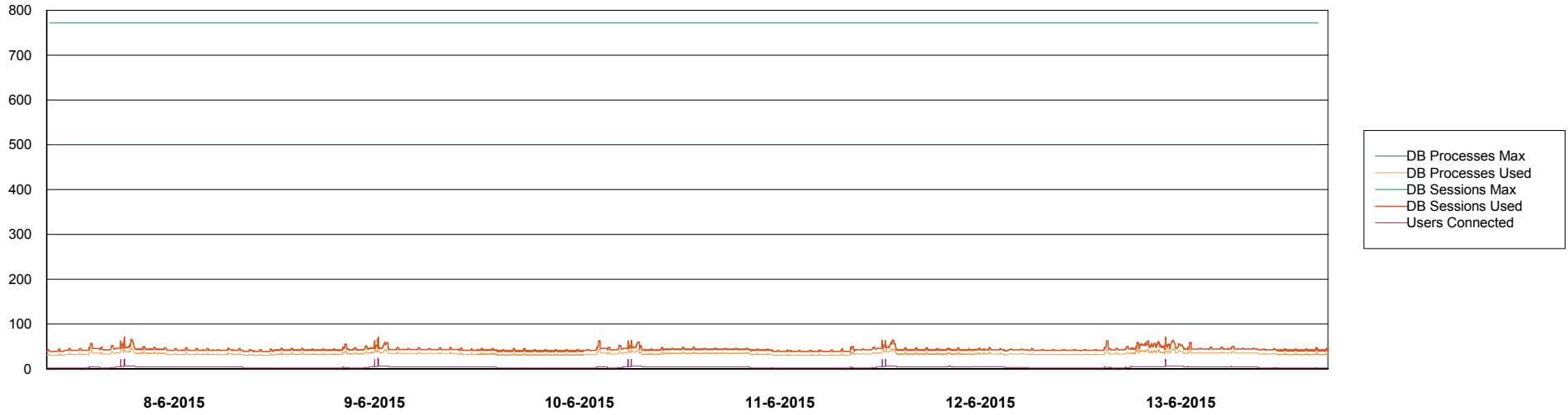
	Used disk space on \$1 (GB)	Total disk space on \$1 (GB)	Free disk space on \$1 (GB)
13-6-2015	65	174	97
12-6-2015	66	174	97
11-6-2015	66	174	97
10-6-2015	66	174	98
9-6-2015	66	173	98
8-6-2015	65	174	98
7-6-2015	65	174	98

Weekly SLA Customer Report

Customer AUJ_Production
Database ID 41



DATABASE PERFORMANCE AUJDB_BI

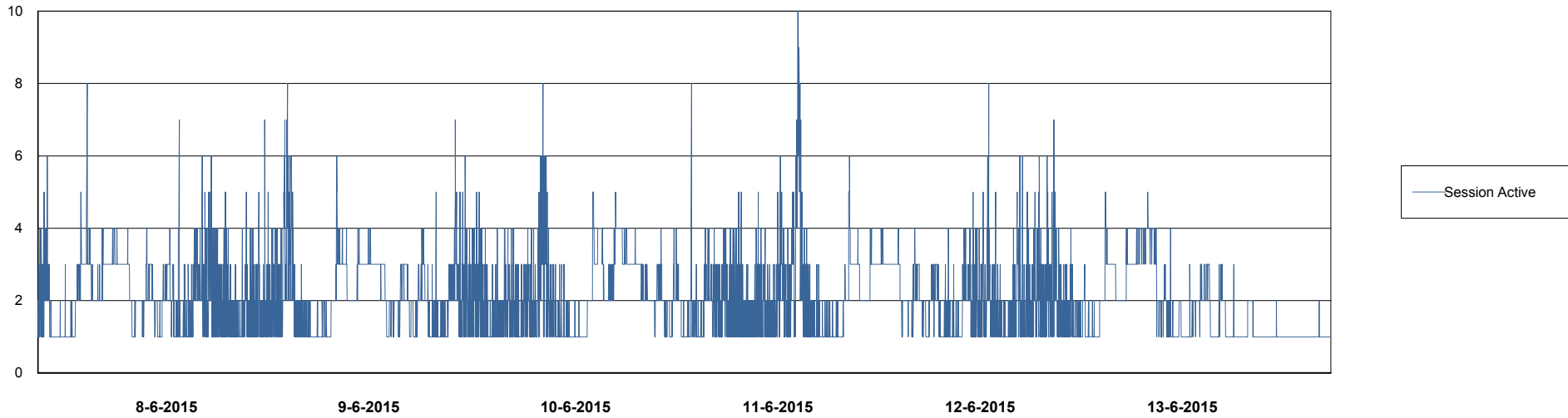
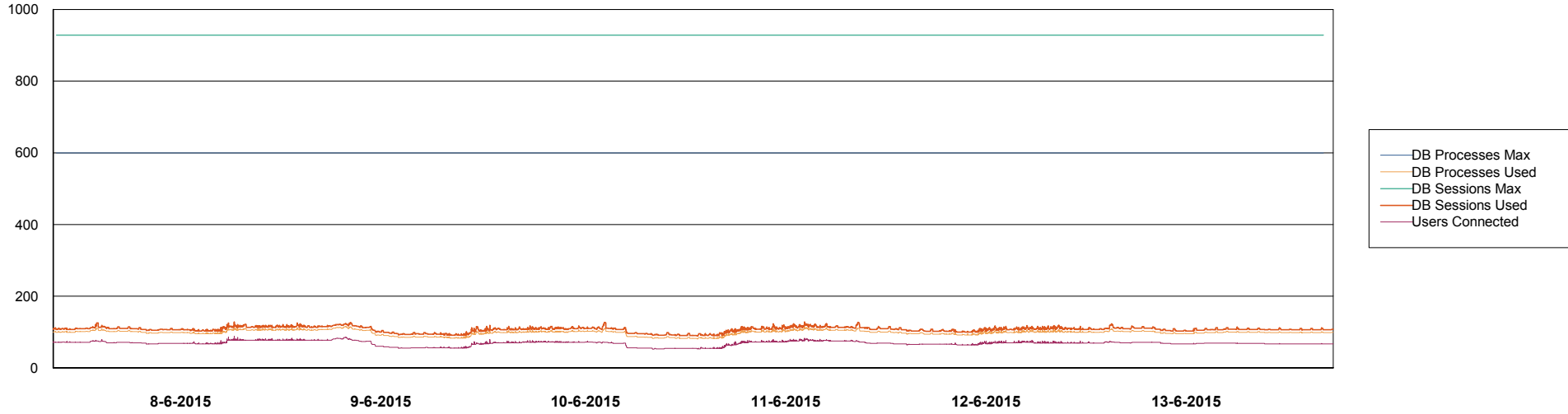


Weekly SLA Customer Report

Customer AUJ_Production
Database ID 41



DATABASE PERFORMANCE AUJDB_Production

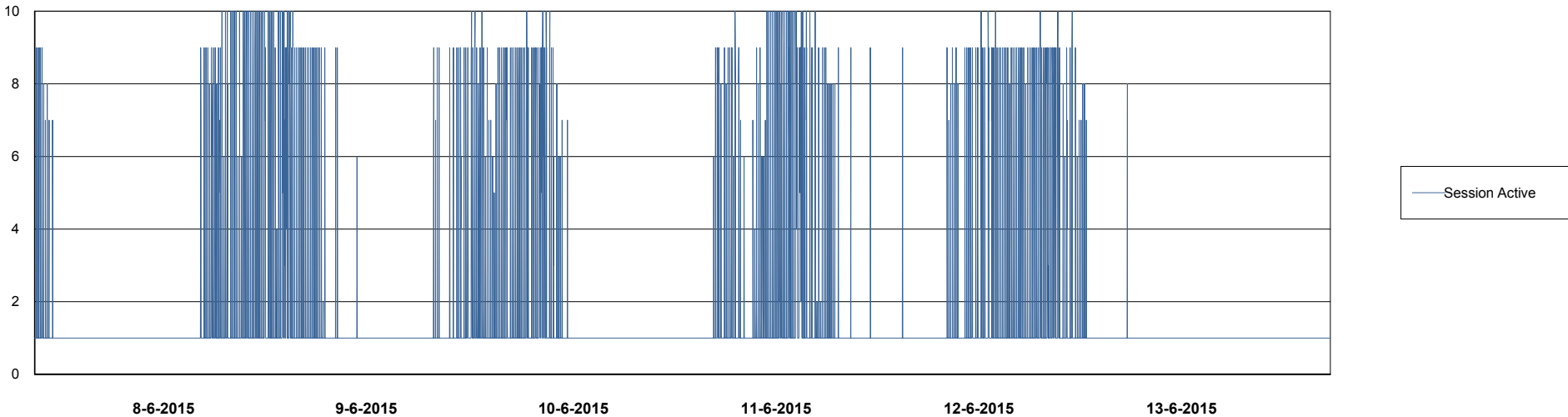
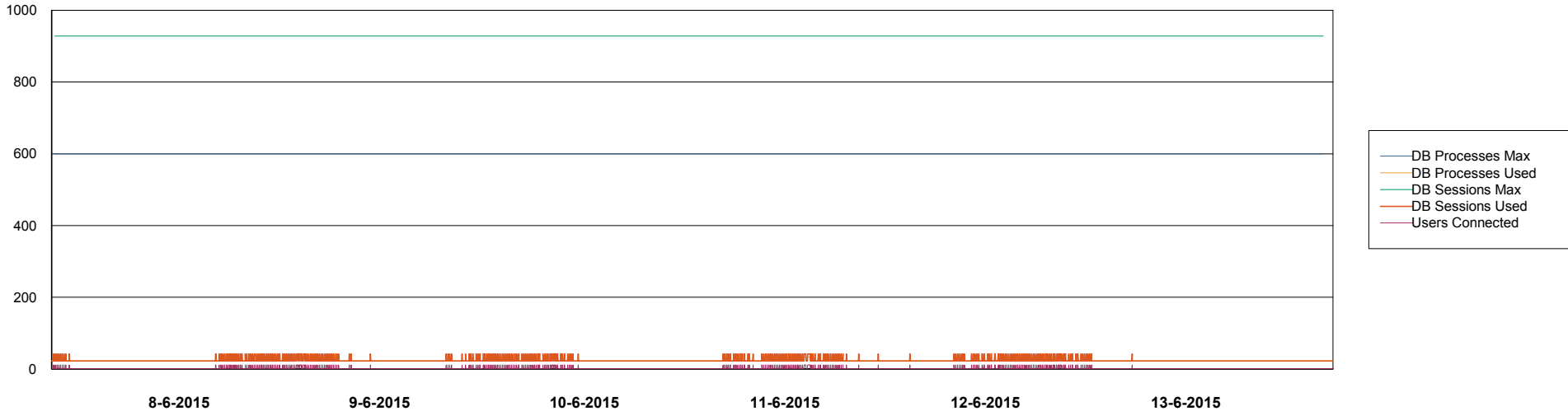


Weekly SLA Customer Report

Customer AUJ_Production
Database ID 41



DATABASE PERFORMANCE AUJDB_Standby



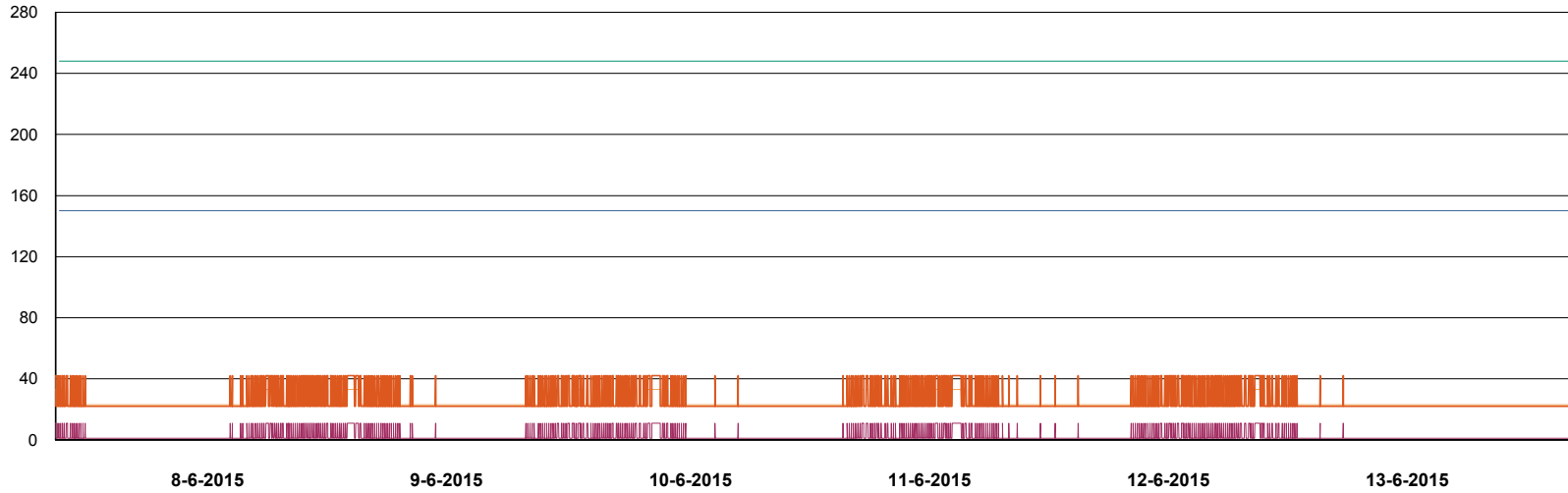
Weekly SLA Customer Report

Customer AUJ_Production
Database ID 41

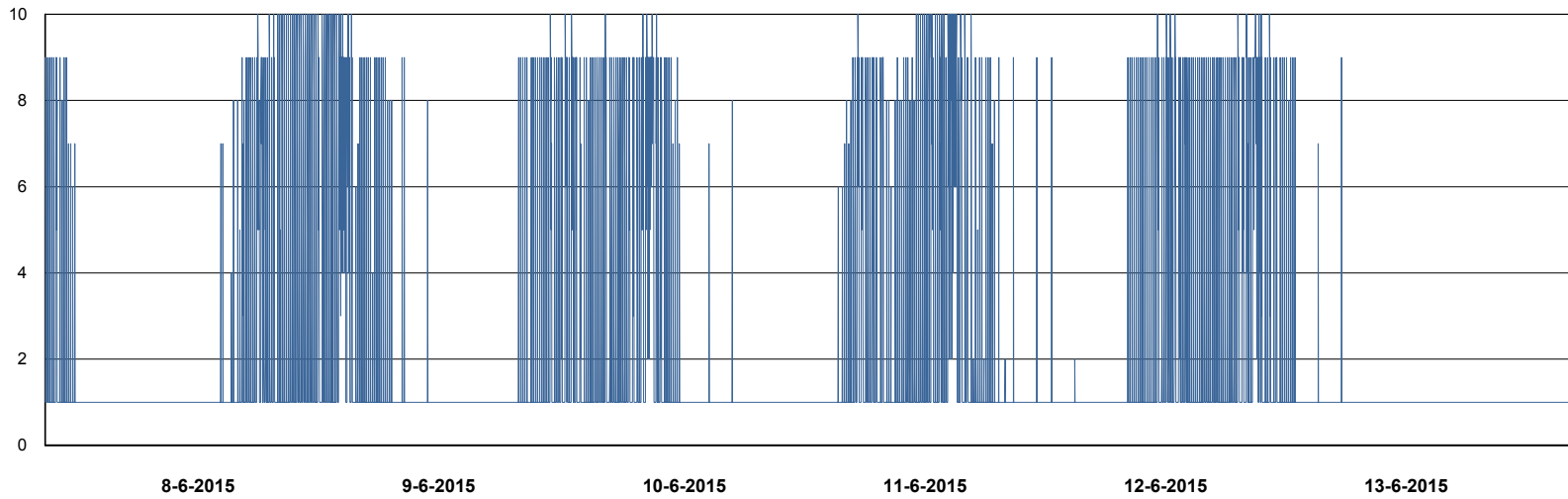


DATABASE PERFORMANCE

AUJDB3_Standby



- DB Processes Max
- DB Processes Used
- DB Sessions Max
- DB Sessions Used
- Users Connected



- Session Active

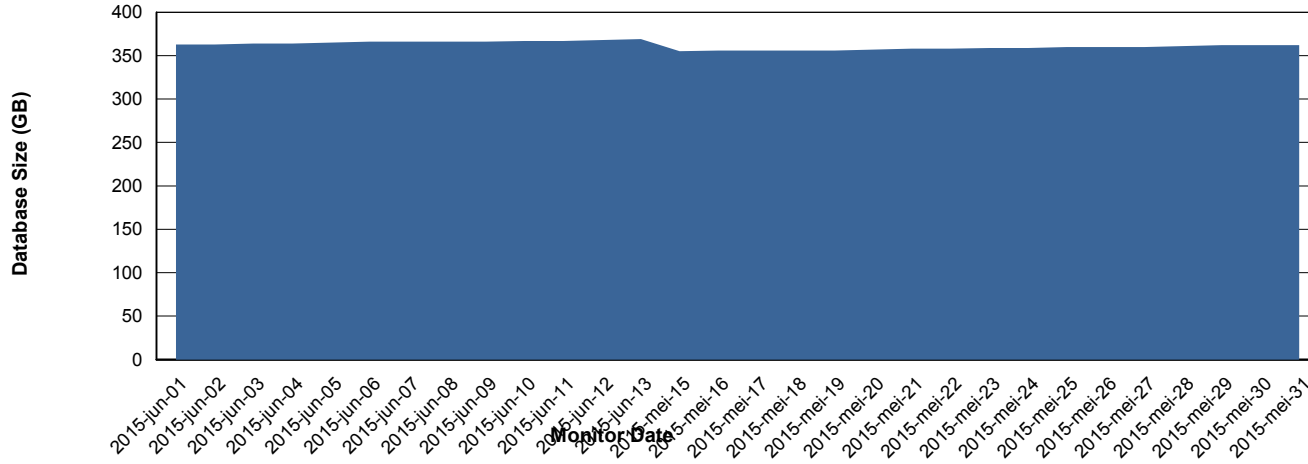
Weekly SLA Customer Report

Customer AUJ_Production
Database ID 41



=====
DATABASE SIZE AUJDB_Production
=====

Database growth over last month



Weekly SLA Customer Report

Customer AUJ_Production
Database ID 41



=====
DATABASE TABLESPACES AUJDB_BI
=====

TOTAL DATABASE SIZE PER TABLESPACE

Date	Tablespace Name	Filesize (Gb)	Usedsize (Gb)	Percentage free
13-6-2015	ABSDATA	112	88	21
	INDX	187	156	17
12-6-2015	ABSDATA	112	88	21
	INDX	187	156	17
11-6-2015	ABSDATA	112	88	21
	INDX	187	155	17
10-6-2015	ABSDATA	112	88	21
	INDX	187	155	17
9-6-2015	ABSDATA	112	88	21
	INDX	187	155	17
8-6-2015	ABSDATA	112	88	21
	INDX	187	155	17
7-6-2015	ABSDATA	112	88	21
	INDX	187	155	17

Weekly SLA Customer Report

Customer AUJ_Production
 Database ID 41



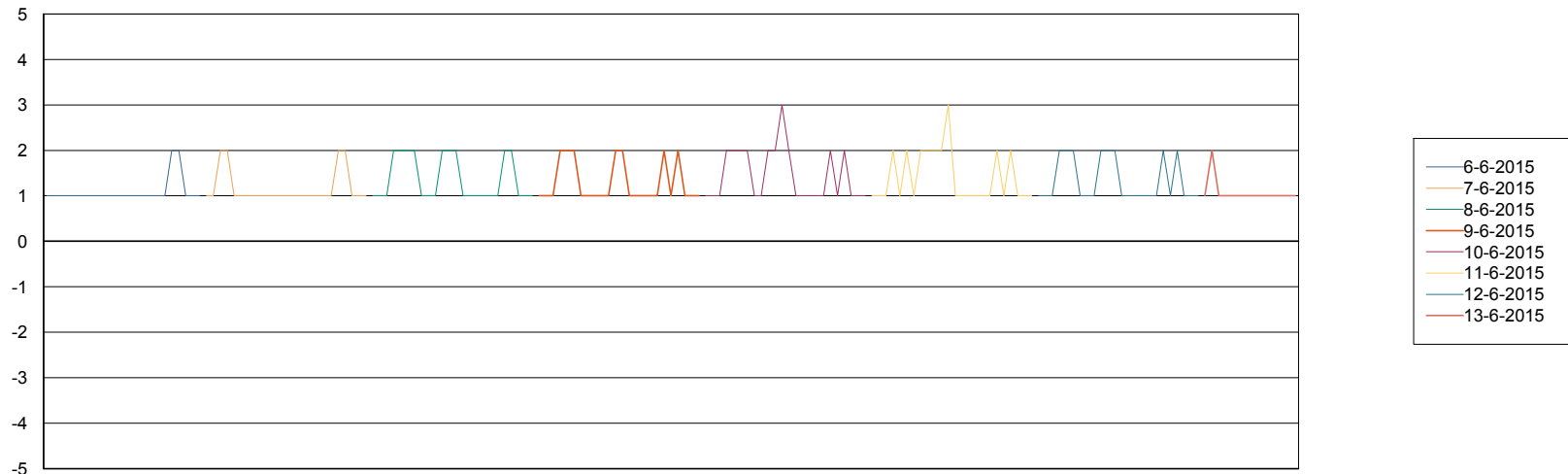
=====
 DATABASE TABLESPACES AUJDB_Production
 =====

TOTAL DATABASE SIZE PER TABLESPACE

Date	Tablespace Name	Filesize (Gb)	Usedsize (Gb)	Percentage free
13-6-2015	ABSDATA	176	156	11
	INDX	241	211	12
12-6-2015	ABSDATA	176	156	11
	INDX	241	211	12
11-6-2015	ABSDATA	176	156	11
	INDX	241	210	13
10-6-2015	ABSDATA	176	155	12
	INDX	241	210	13
9-6-2015	ABSDATA	176	155	12
	INDX	241	210	13
8-6-2015	ABSDATA	176	155	12
	INDX	241	209	13
7-6-2015	ABSDATA	176	155	12
	INDX	241	209	13

=====
 STANDBY DATABASE HEALTH AUJ_Production
 =====

Recovery lag for last 7 days



Weekly SLA Customer Report

Customer AUJ_Production
Database ID 41

