

Weekly SLA Customer Report

Customer PCO Production
Database ID 44



=====
HARDDISK USAGE PCO_PRD_ORACLE1
=====

	Total disk space on C (GB)	Free disk space on C (GB)	Total disk space on D (GB)	Free disk space on D (GB)
6-6-2015	279	217	838	146
5-6-2015	279	217	838	147
4-6-2015	279	217	838	150
3-6-2015	279	217	838	148
2-6-2015	279	217	838	127
1-6-2015	279	217	838	133
31-5-2015	279	217	838	159

=====
HARDDISK USAGE PCO_PRD_ORACLE2
=====

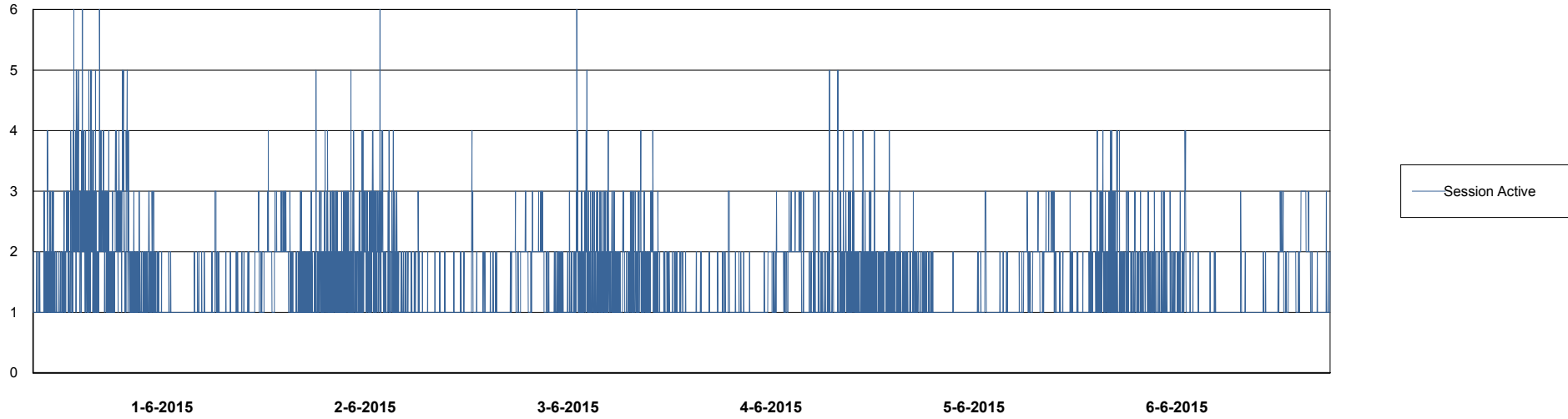
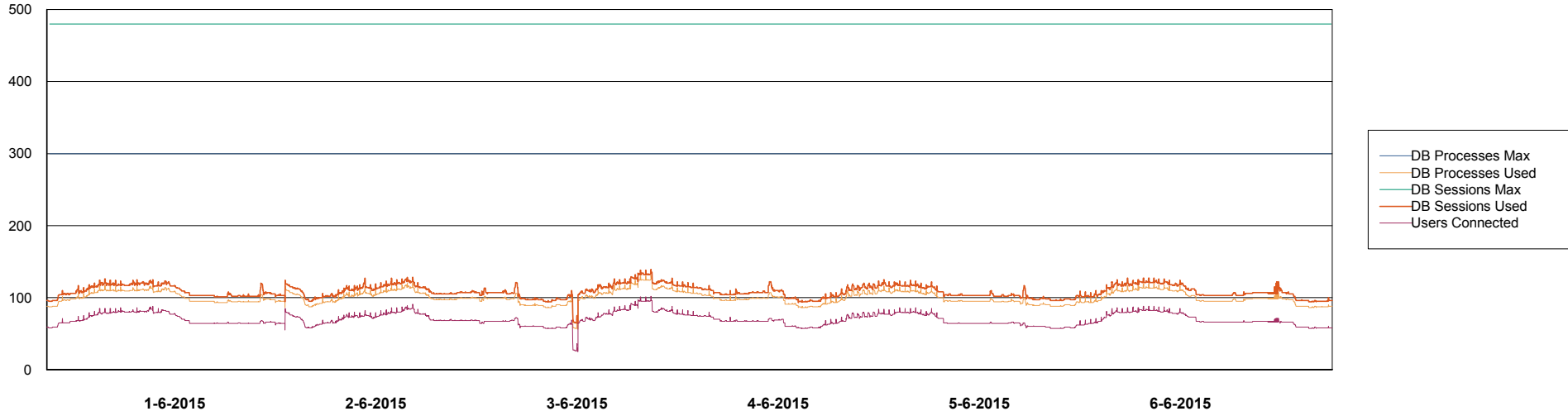
	Total disk space on C (GB)	Free disk space on C (GB)	Total disk space on D (GB)	Free disk space on D (GB)
6-6-2015	279	215	838	539
5-6-2015	279	216	838	541
4-6-2015	279	215	838	544
3-6-2015	279	216	838	547
2-6-2015	279	215	838	512
1-6-2015	279	215	838	481
31-5-2015	279	216	838	483

Weekly SLA Customer Report

Customer PCO Production
Database ID 44



DATABASE PERFORMANCE PCODB_Production

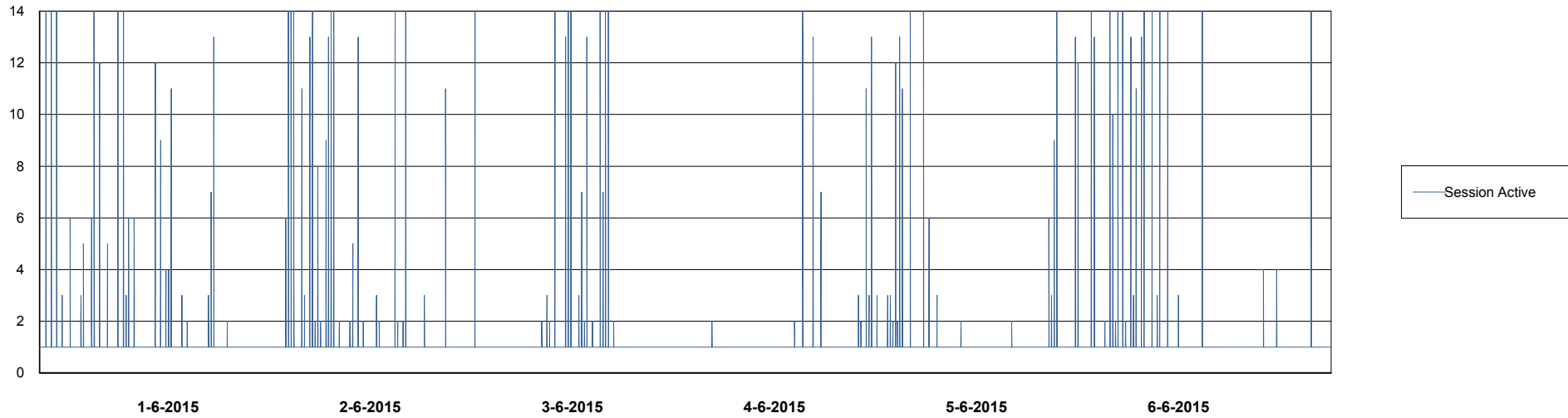
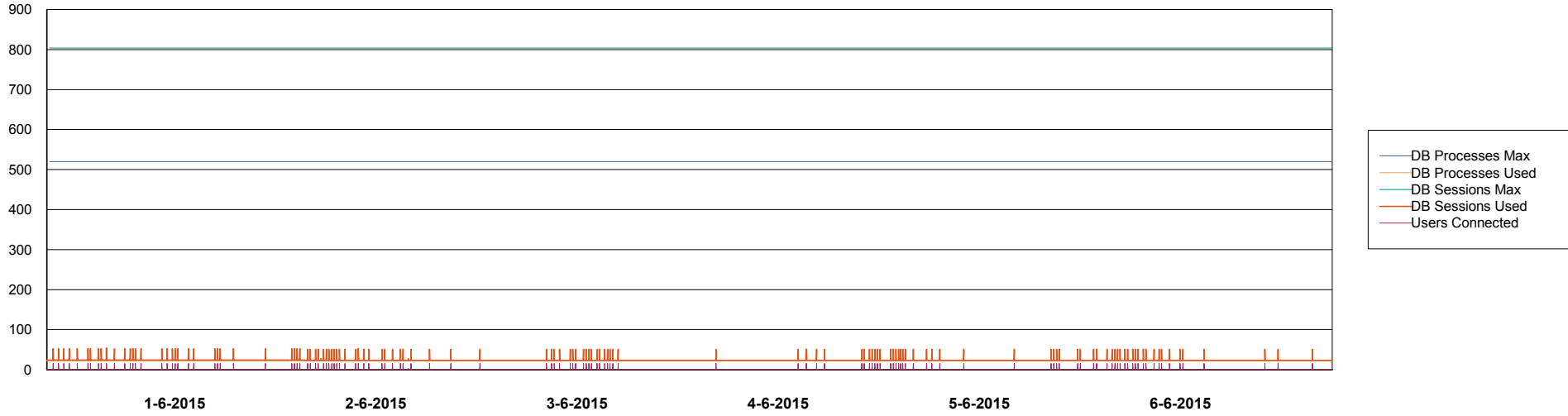


Weekly SLA Customer Report

Customer PCO Production
Database ID 44



DATABASE PERFORMANCE PCODB_Standby



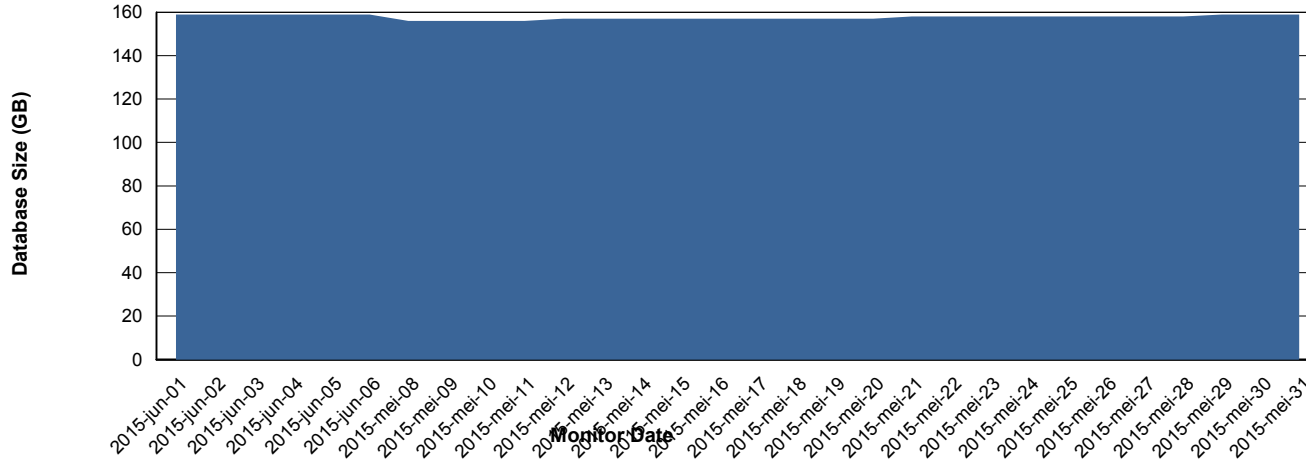
Weekly SLA Customer Report

Customer PCO Production
 Database ID 44



=====
 DATABASE SIZE PCODB_Production
 =====

Database growth over last month



=====
 DATABASE TABLESPACES PCODB_Production
 =====

TOTAL DATABASE SIZE PER TABLESPACE

Date	Tablespace Name	Filesize (Gb)	Usedsize (Gb)	Percentage free
6-6-2015	ABSDATA	79	63	20
	INDX	118	95	19
5-6-2015	ABSDATA	79	63	20
	INDX	118	95	19
4-6-2015	ABSDATA	79	63	20
	INDX	118	94	20
3-6-2015	ABSDATA	79	63	20
	INDX	118	94	20
2-6-2015	ABSDATA	79	63	20
	INDX	118	94	20
1-6-2015	ABSDATA	79	63	20
	INDX	118	94	20
31-5-2015	ABSDATA	79	63	20
	INDX	118	94	20

Weekly SLA Customer Report

Customer PCO Production
Database ID 44



=====
STANDBY DATABASE HEALTH PCO Production
=====

Recovery lag for last 7 days

