

# Weekly SLA Customer Report

Customer BCH Production  
Database ID 28



=====  
HARDDISK USAGE BCH\_PRD\_ORCDB1  
=====

	Total disk space on C (GB)	Free disk space on C (GB)	Total disk space on D (GB)	Free disk space on D (GB)
6-6-2015	278	143	278	59
5-6-2015	278	145	278	59
4-6-2015	278	144	278	56
3-6-2015	278	144	278	61
2-6-2015	278	144	278	67
1-6-2015	278	144	278	73
31-5-2015	278	145	278	76

=====  
HARDDISK USAGE BCH\_PRD\_ORCDB2  
=====

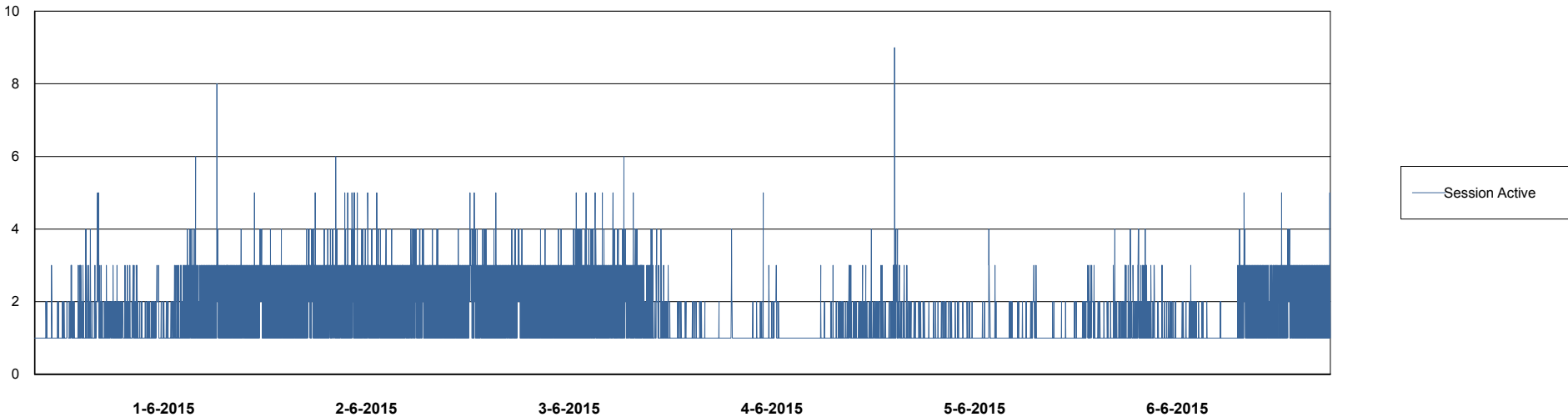
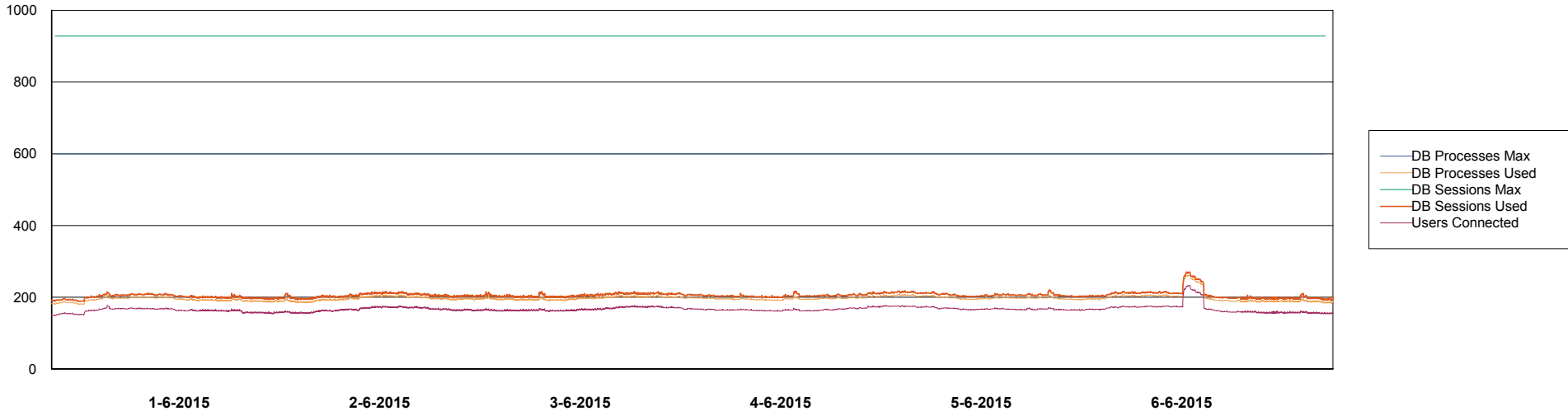
	Total disk space on C (GB)	Free disk space on C (GB)	Total disk space on D (GB)	Free disk space on D (GB)
6-6-2015	278	169	278	90
5-6-2015	278	169	278	87
4-6-2015	278	169	278	82
3-6-2015	278	169	278	84
2-6-2015	278	169	278	87
1-6-2015	278	169	278	90
31-5-2015	278	169	278	92

# Weekly SLA Customer Report

Customer BCH Production  
Database ID 28



=====  
DATABASE PERFORMANCE      BCHDB\_Production      =====  
=====

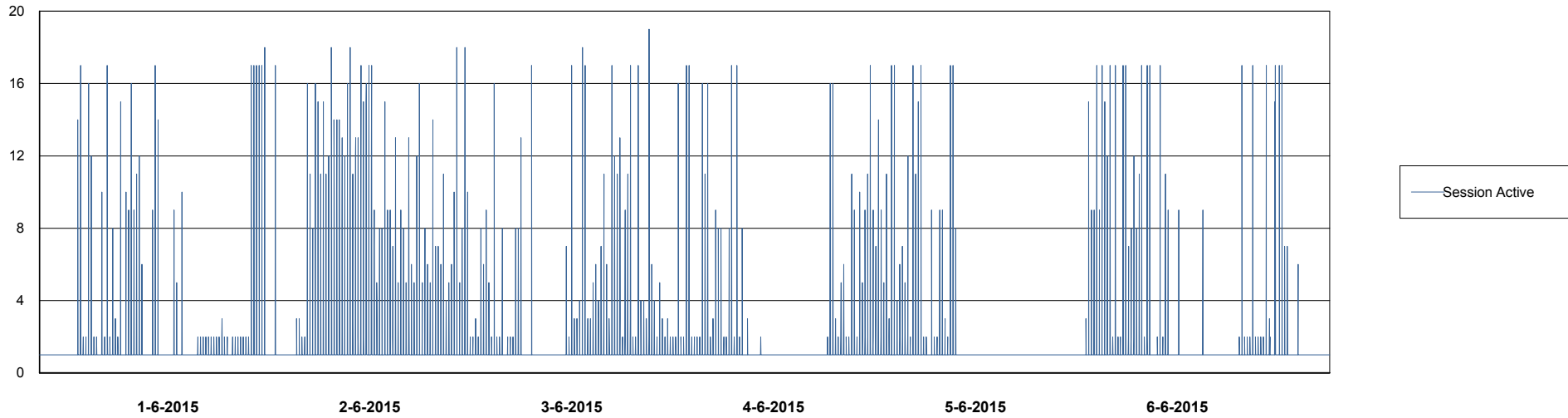
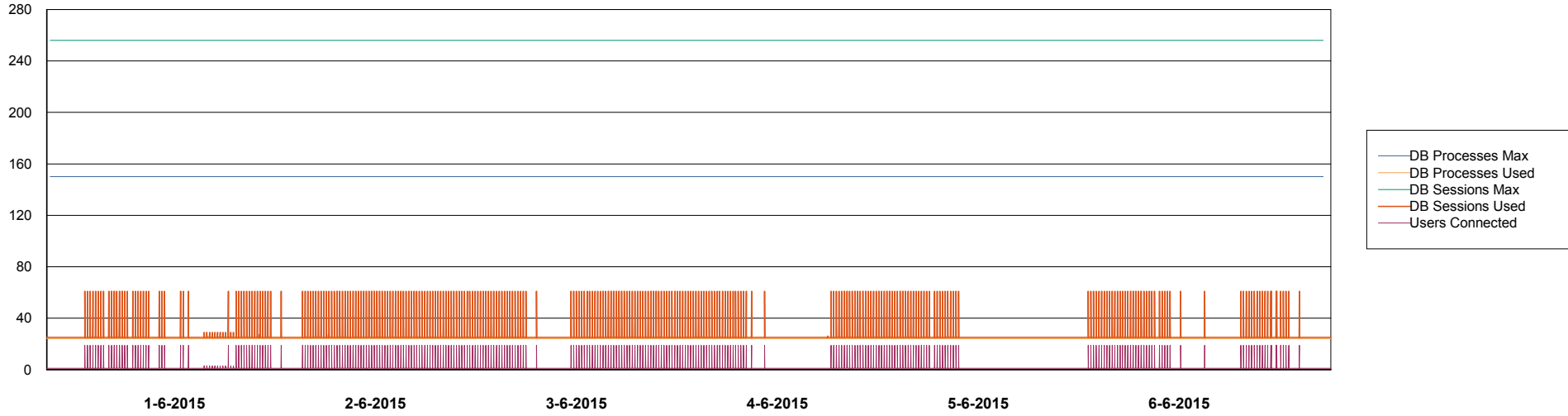


# Weekly SLA Customer Report

Customer BCH Production  
Database ID 28



## DATABASE PERFORMANCE BCHDB\_Standby



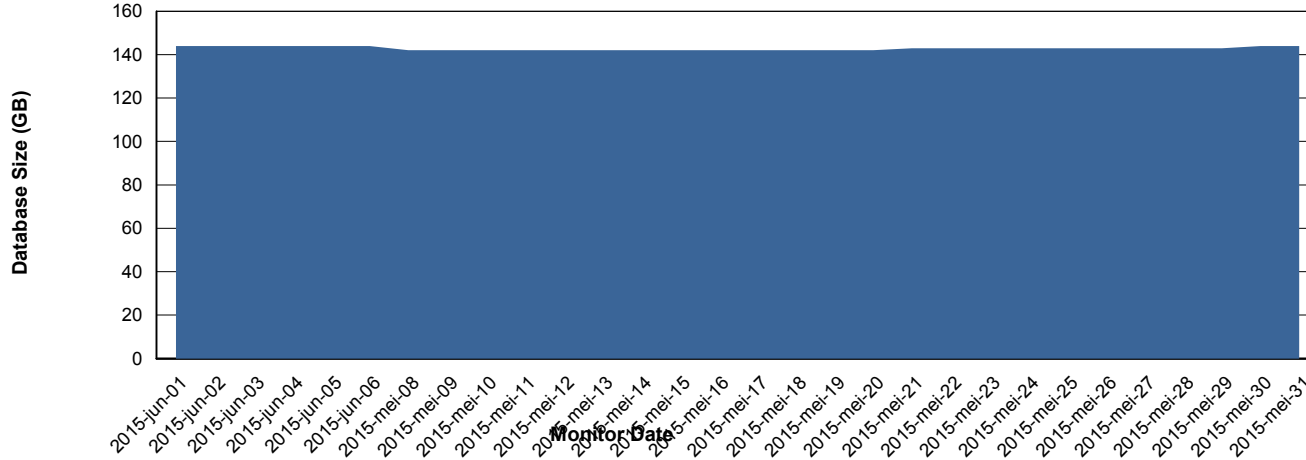
# Weekly SLA Customer Report

Customer BCH Production  
 Database ID 28



=====  
 DATABASE SIZE BCHDB\_Production  
 =====

## Database growth over last month



=====  
 DATABASE TABLESPACES BCHDB\_Production  
 =====

### TOTAL DATABASE SIZE PER TABLESPACE

Date	Tablespace Name	Filesize (Gb)	Usedsize (Gb)	Percentage free
6-6-2015	ABSDATA	42	27	36
	INDX	145	115	21
5-6-2015	ABSDATA	42	27	36
	INDX	145	115	21
4-6-2015	ABSDATA	42	27	36
	INDX	145	115	21
3-6-2015	ABSDATA	42	27	36
	INDX	145	115	21
2-6-2015	ABSDATA	42	27	36
	INDX	145	115	21
1-6-2015	ABSDATA	42	27	36
	INDX	145	115	21
31-5-2015	ABSDATA	42	27	36
	INDX	145	115	21

# Weekly SLA Customer Report

Customer BCH Production  
Database ID 28



=====  
STANDBY DATABASE HEALTH BCH Production  
=====

### Recovery lag for last 7 days

