

Weekly SLA Customer Report

Customer AUJ_Production
 Database ID 41



=====
 HARDDISK USAGE AUJ_PRD_ORACLE_BI1
 =====

	Used disk space on \$1 (GB)	Total disk space on \$1 (GB)	Free disk space on \$1 (GB)
6-6-2015	423	526	75
5-6-2015	419	526	80
4-6-2015	419	526	80
3-6-2015	428	526	71
2-6-2015	431	526	68
1-6-2015	431	526	68
31-5-2015	436	526	62

=====
 HARDDISK USAGE AUJ_PRD_ORACLE1
 =====

	Used disk space on \$1 (GB)	Total disk space on \$1 (GB)	Free disk space on \$1 (GB)	Used disk space on /abs2 (GB)	Used disk space on /bk (GB)
6-6-2015	66	290	67	242	557
5-6-2015	66	290	67	242	557
2-6-2015	69	290	67	242	682
1-6-2015	69	290	67	242	686
31-5-2015	68	290	67	242	685

=====
 HARDDISK USAGE AUJ_PRD_ORACLE2
 =====

Weekly SLA Customer Report

Customer AUJ_Production
Database ID 41



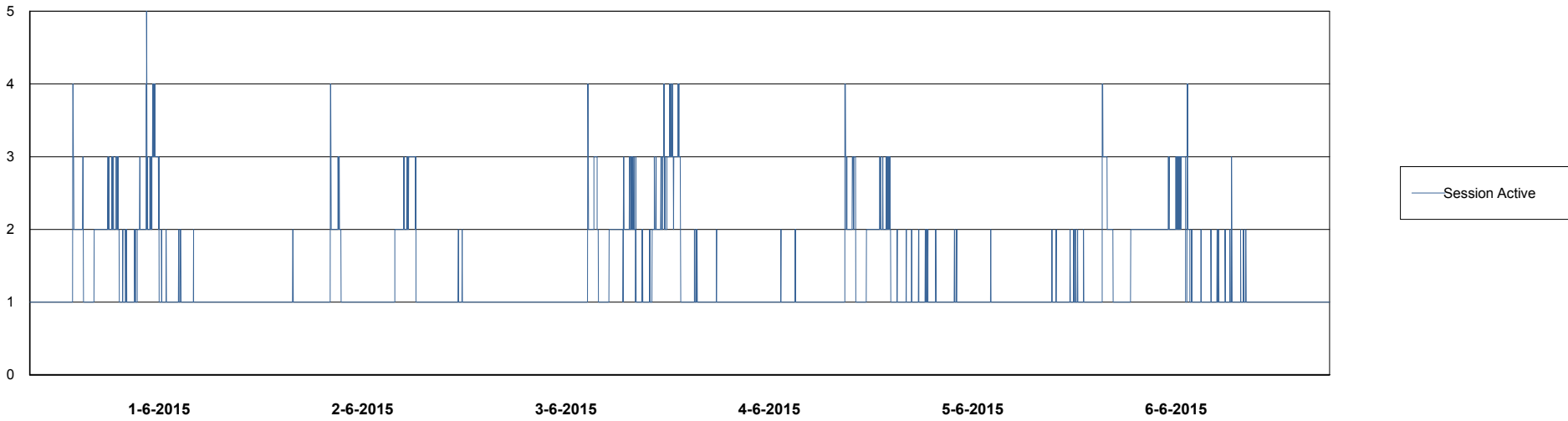
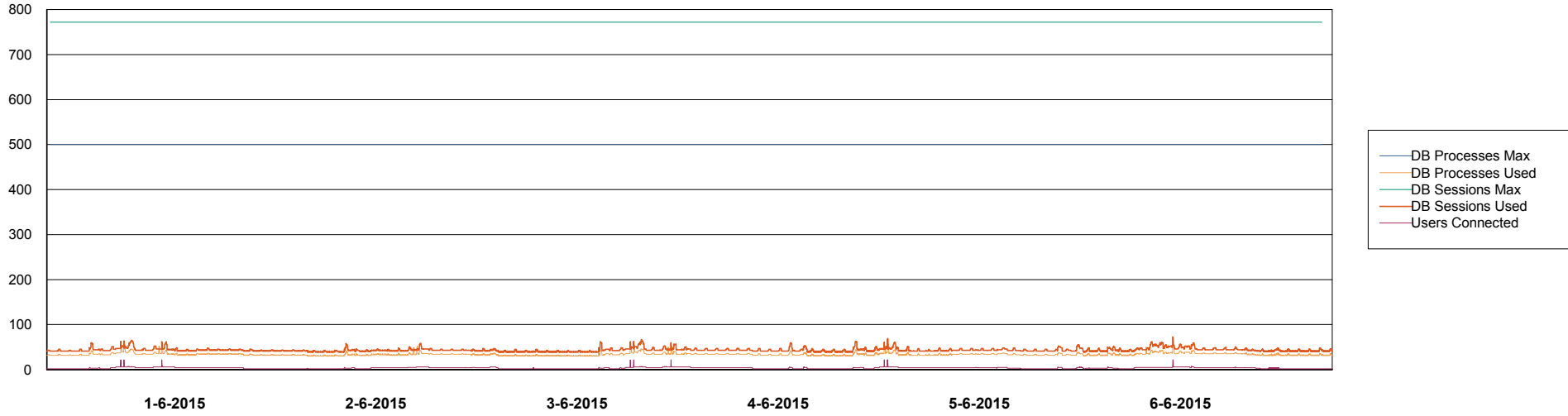
	Used disk space on \$1 (GB)	Total disk space on \$1 (GB)	Free disk space on \$1 (GB)
6-6-2015	66	174	97
5-6-2015	66	174	97
4-6-2015	66	174	97
3-6-2015	66	174	98
2-6-2015	66	174	98
1-6-2015	65	174	98
31-5-2015	65	174	98

Weekly SLA Customer Report

Customer AUJ_Production
Database ID 41



DATABASE PERFORMANCE AUJDB_BI

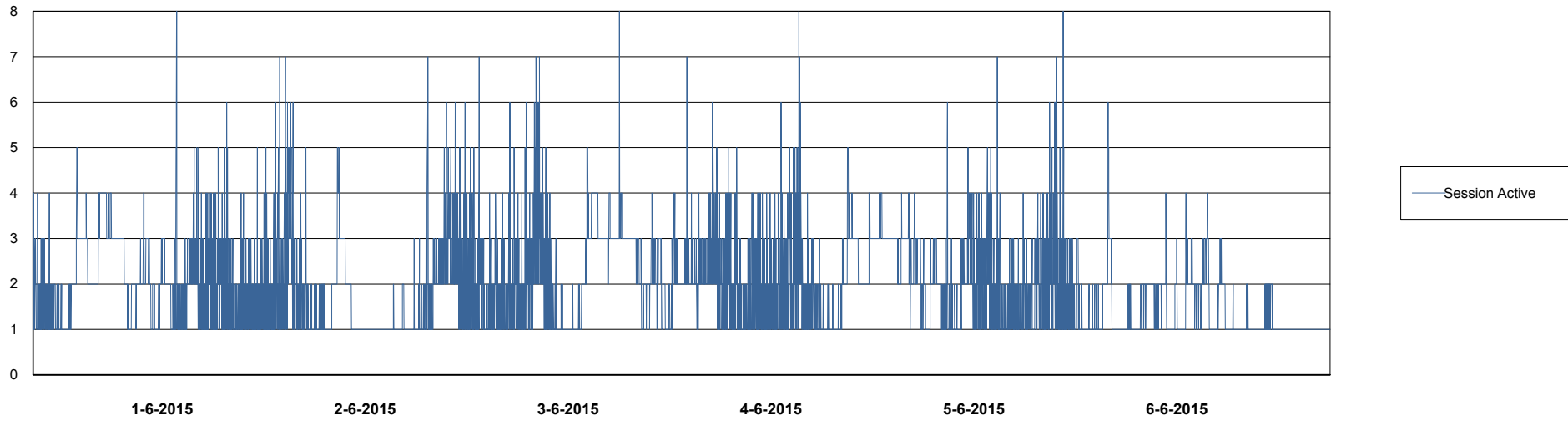
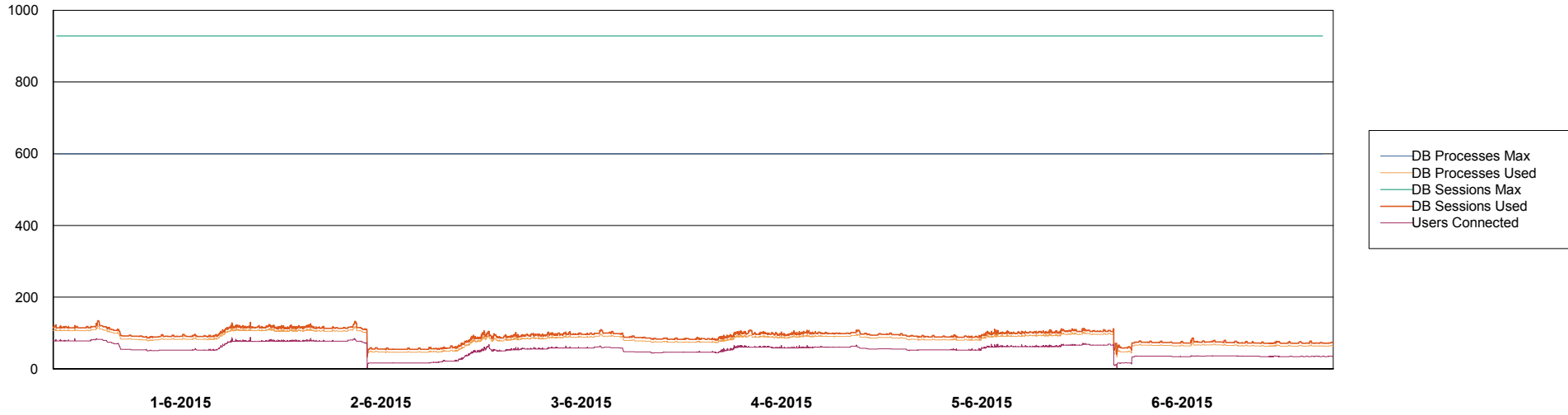


Weekly SLA Customer Report

Customer AUJ_Production
Database ID 41



DATABASE PERFORMANCE AUJDB_Production

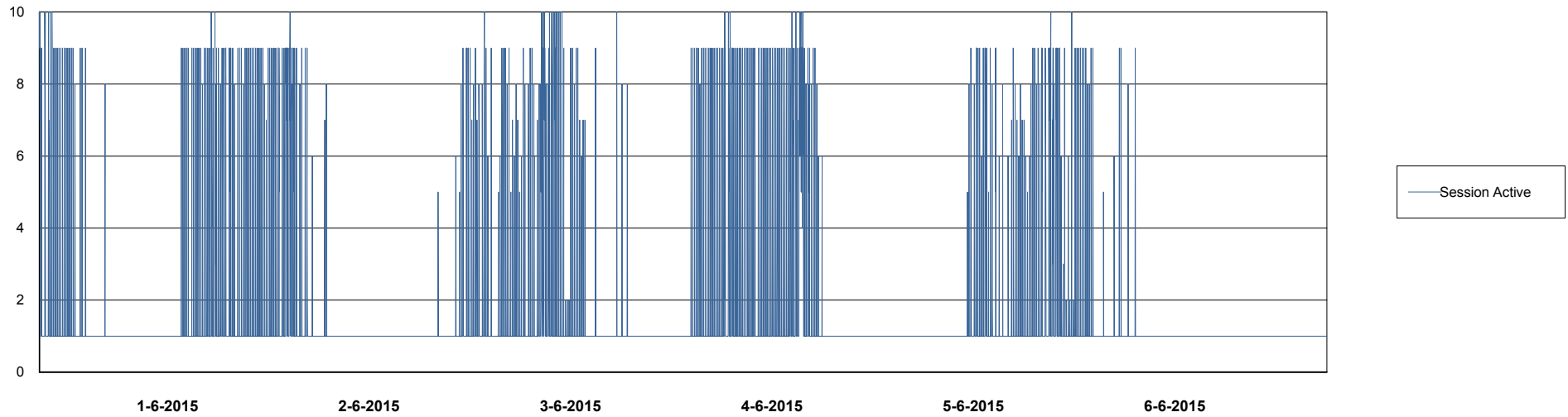
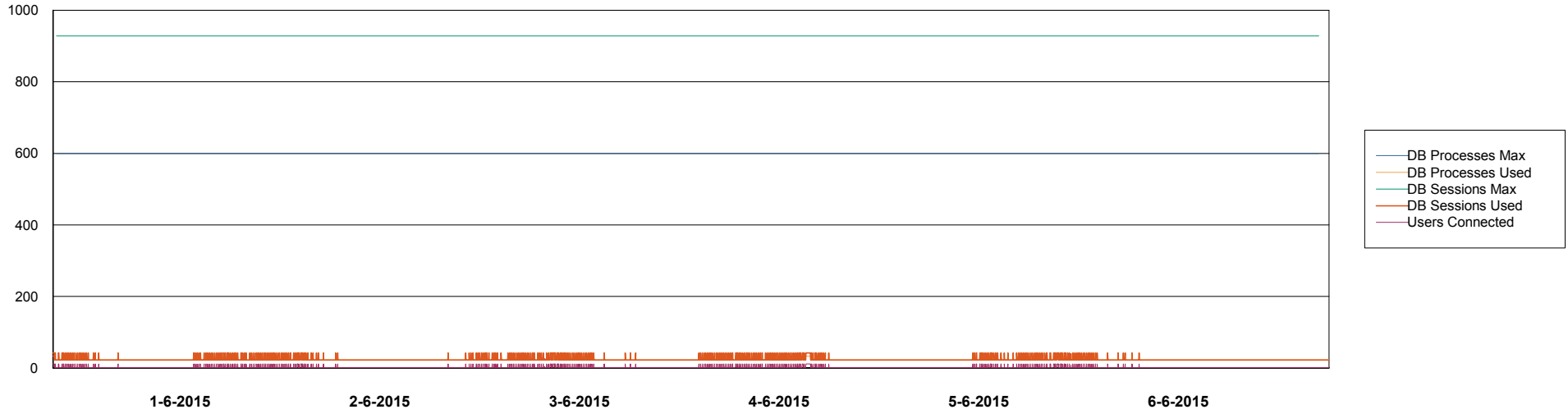


Weekly SLA Customer Report

Customer AUJ_Production
Database ID 41



DATABASE PERFORMANCE AUJDB_Standby

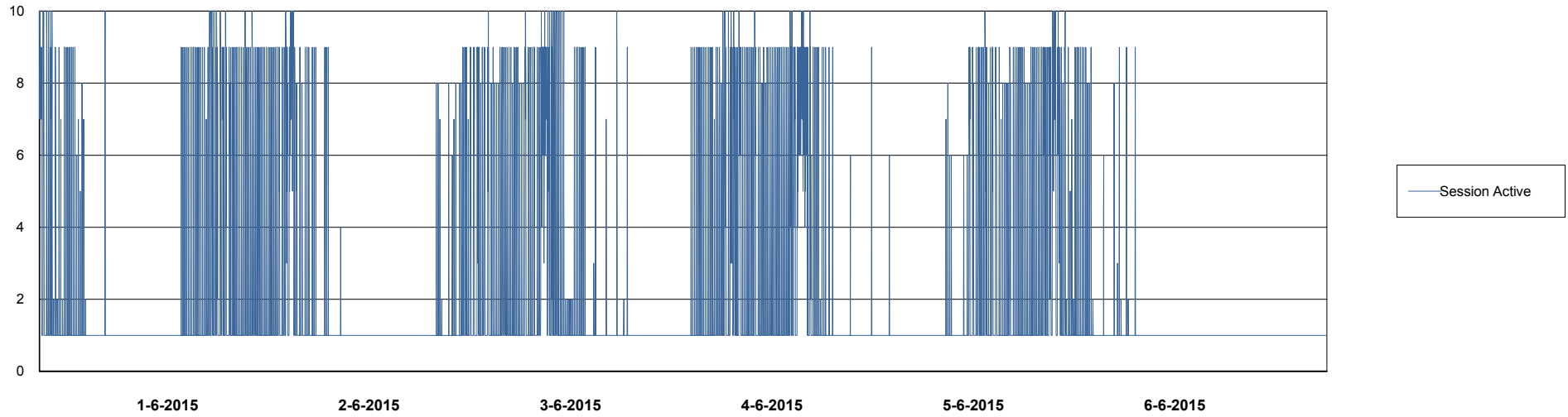
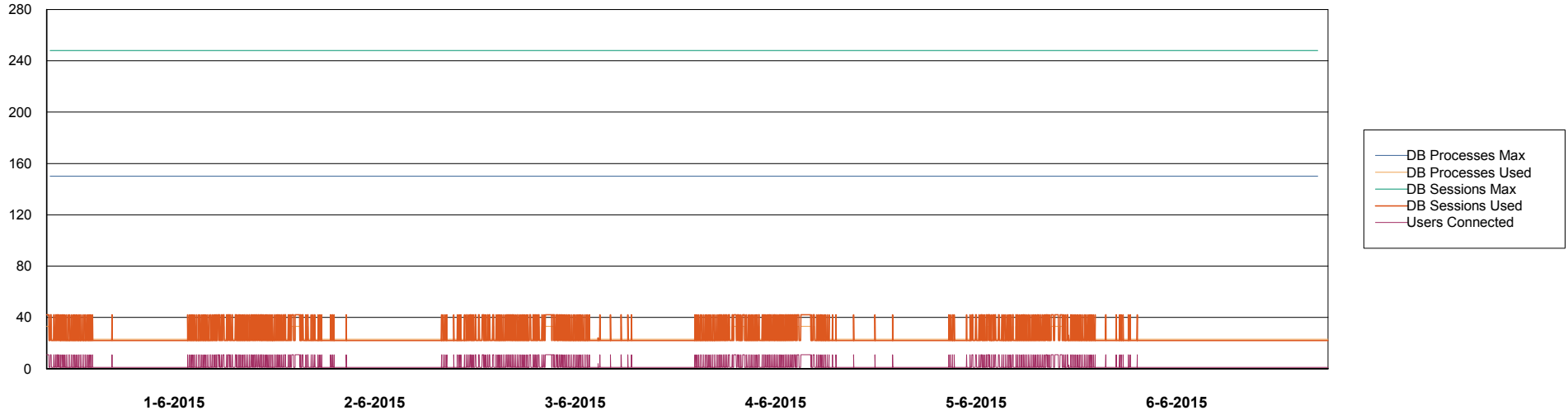


Weekly SLA Customer Report

Customer AUJ_Production
Database ID 41



DATABASE PERFORMANCE AUJDB3_Standby



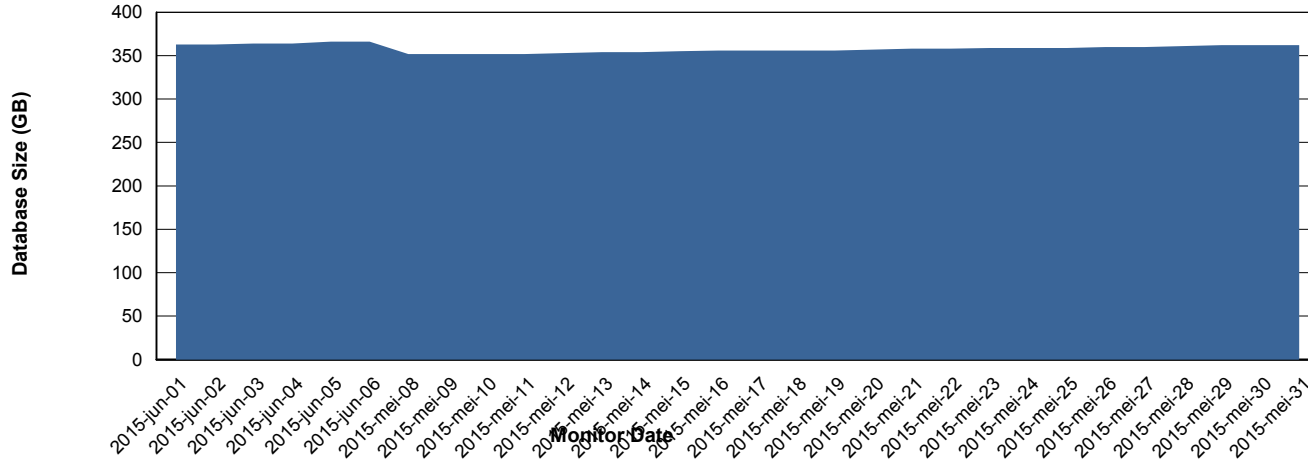
Weekly SLA Customer Report

Customer AUJ_Production
Database ID 41



=====
DATABASE SIZE AUJDB_Production
=====

Database growth over last month



Weekly SLA Customer Report

Customer AUJ_Production
 Database ID 41



=====
 DATABASE TABLESPACES AUJDB_BI
 =====

TOTAL DATABASE SIZE PER TABLESPACE

Date	Tablespace Name	Filesize (Gb)	Usedsize (Gb)	Percentage free
6-6-2015	ABSDATA	112	88	21
	INDX	187	155	17
5-6-2015	ABSDATA	112	88	21
	INDX	187	155	17
4-6-2015	ABSDATA	112	88	21
	INDX	187	155	17
3-6-2015	ABSDATA	112	88	21
	INDX	187	155	17
2-6-2015	ABSDATA	112	88	21
	INDX	187	154	18
1-6-2015	ABSDATA	112	88	21
	INDX	187	154	18
31-5-2015	ABSDATA	112	87	22
	INDX	187	154	18

Weekly SLA Customer Report

Customer AUJ_Production
 Database ID 41



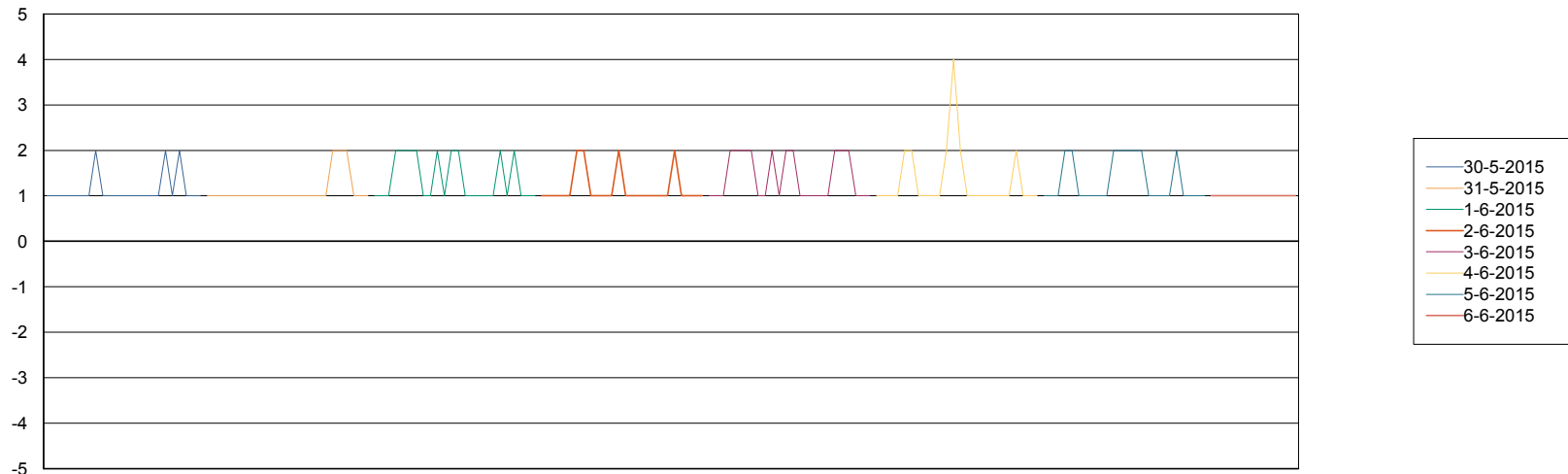
=====
 DATABASE TABLESPACES AUJDB_Production
 =====

TOTAL DATABASE SIZE PER TABLESPACE

Date	Tablespace Name	Filesize (Gb)	Usedsize (Gb)	Percentage free
6-6-2015	ABSDATA	176	155	12
	INDX	241	209	13
5-6-2015	ABSDATA	176	155	12
	INDX	241	209	13
4-6-2015	ABSDATA	176	154	13
	INDX	241	209	13
3-6-2015	ABSDATA	176	154	13
	INDX	241	208	14
2-6-2015	ABSDATA	176	154	13
	INDX	241	208	14
1-6-2015	ABSDATA	176	154	13
	INDX	241	207	14
31-5-2015	ABSDATA	176	153	13
	INDX	241	207	14

=====
 STANDBY DATABASE HEALTH AUJ_Production
 =====

Recovery lag for last 7 days



Weekly SLA Customer Report

Customer AUJ_Production
Database ID 41

