

Weekly SLA Customer Report

Customer JWR Production
 Database ID 43



=====
 HARDDISK USAGE JWR_PRD_JWR-ABS-01
 =====

	Used disk space on / (GB)	Total disk space on / (GB)	Free disk space on / (GB)
30-5-2015	29	49	17
29-5-2015	29	49	17
28-5-2015	29	49	17
27-5-2015	29	49	17
26-5-2015	28	49	19
25-5-2015	29	49	17
24-5-2015	29	49	17

=====
 HARDDISK USAGE JWR_PRD_JWR-ABS-02
 =====

	Used disk space on / (GB)	Total disk space on / (GB)	Free disk space on / (GB)
30-5-2015	30	49	17
29-5-2015	30	49	17
28-5-2015	30	49	17
27-5-2015	30	49	17
26-5-2015	30	49	17
25-5-2015	30	49	17
24-5-2015	30	49	17

Weekly SLA Customer Report

Customer JWR Production
 Database ID 43



=====

HARDDISK USAGE JWR_PRD_JWR-ODB-01

=====

	Used disk space on / (GB)	Total disk space on / (GB)	Free disk space on / (GB)
30-5-2015	83	148	58
29-5-2015	83	148	57
28-5-2015	83	148	57
27-5-2015	83	148	57
26-5-2015	83	148	58
25-5-2015	84	148	57
24-5-2015	83	148	58

=====

HARDDISK USAGE JWR_PRD_JWR-ODB-02

=====

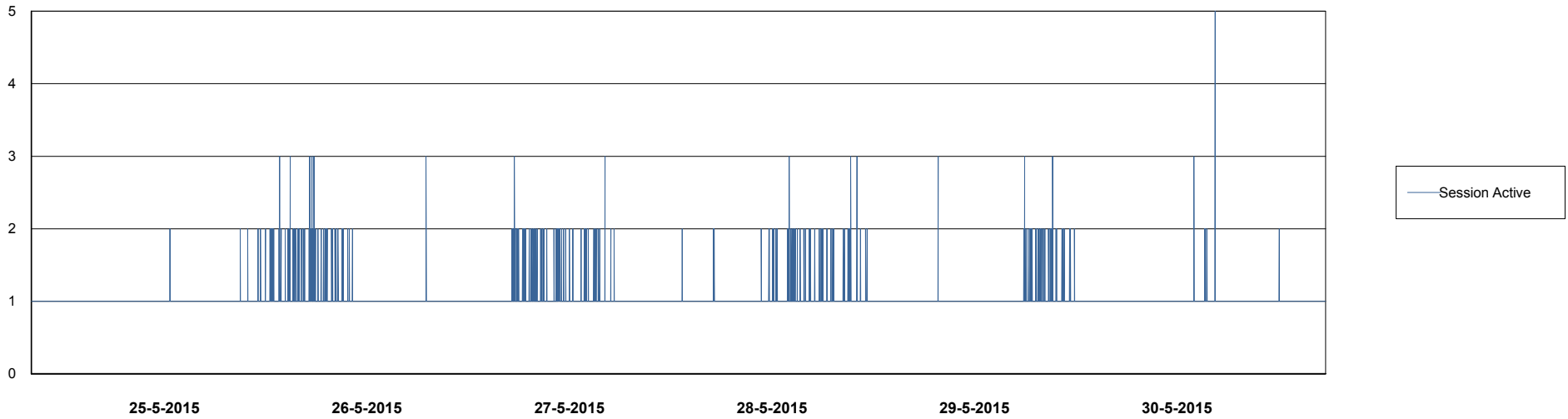
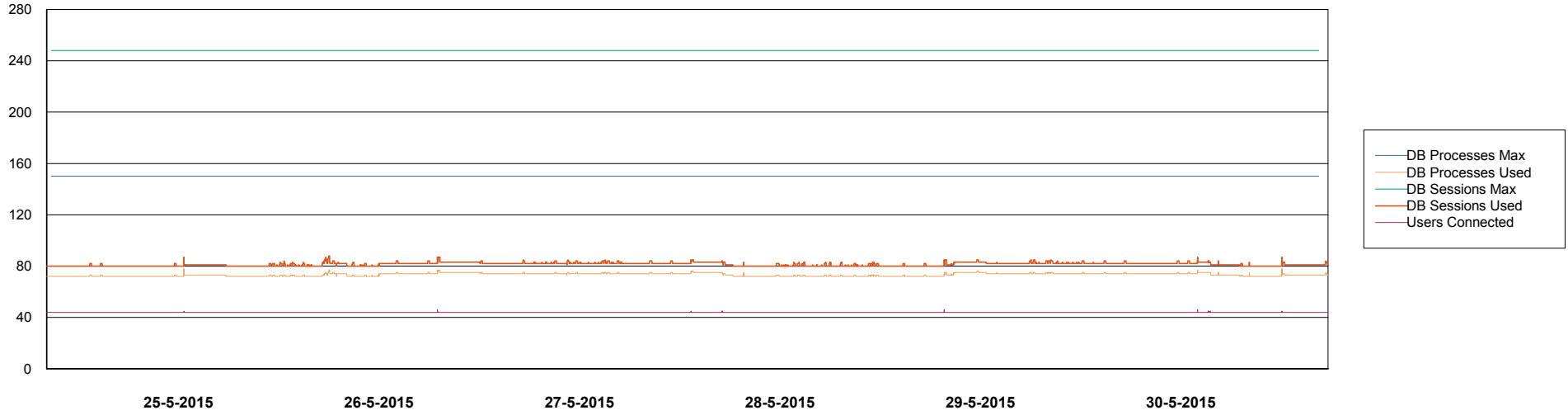
	Used disk space on / (GB)	Total disk space on / (GB)	Free disk space on / (GB)
30-5-2015	93	138	38
29-5-2015	93	138	38
28-5-2015	93	138	37
27-5-2015	95	138	36
26-5-2015	94	138	37
25-5-2015	93	138	38
24-5-2015	92	138	38

Weekly SLA Customer Report

Customer JWR Production
Database ID 43



DATABASE PERFORMANCE JWRDB_Production



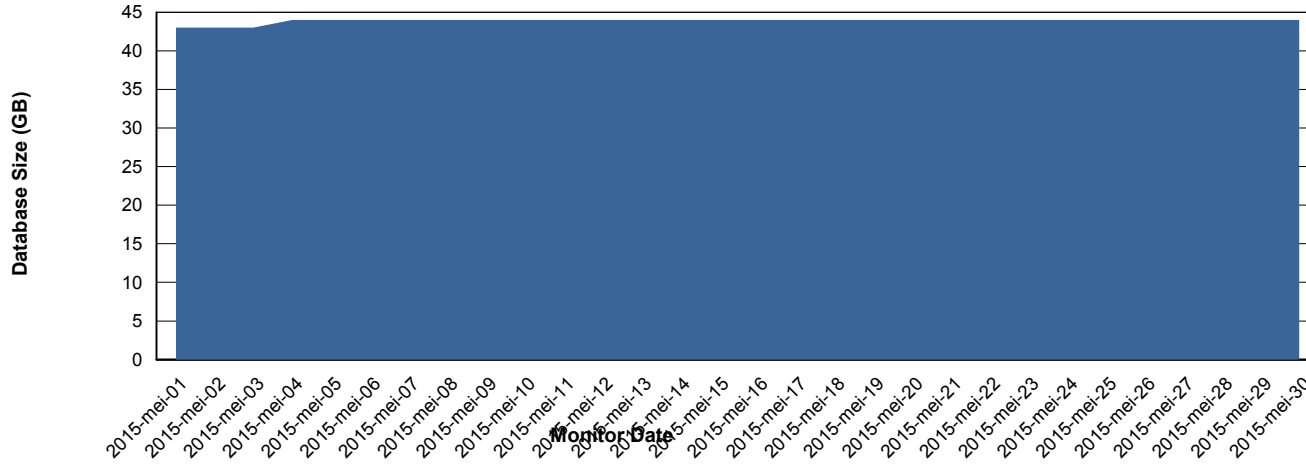
Weekly SLA Customer Report

Customer JWR Production
 Database ID 43



=====
 DATABASE SIZE JWRDB_Production
 =====

Database growth over last month



=====
 DATABASE TABLESPACES JWRDB_Production
 =====

TOTAL DATABASE SIZE PER TABLESPACE

Date	Tablespace Name	Filesize (Gb)	Usedsize (Gb)	Percentage free
30-5-2015	ABSDATA	18	13	28
	INDX	38	31	18
29-5-2015	ABSDATA	18	13	28
	INDX	38	31	18
28-5-2015	ABSDATA	18	13	28
	INDX	38	31	18
27-5-2015	ABSDATA	18	13	28
	INDX	38	31	18
26-5-2015	ABSDATA	18	13	28
	INDX	38	31	18
25-5-2015	ABSDATA	18	13	28
	INDX	38	31	18
24-5-2015	ABSDATA	18	13	28
	INDX	38	31	18

Weekly SLA Customer Report

Customer JWR Production
Database ID 43



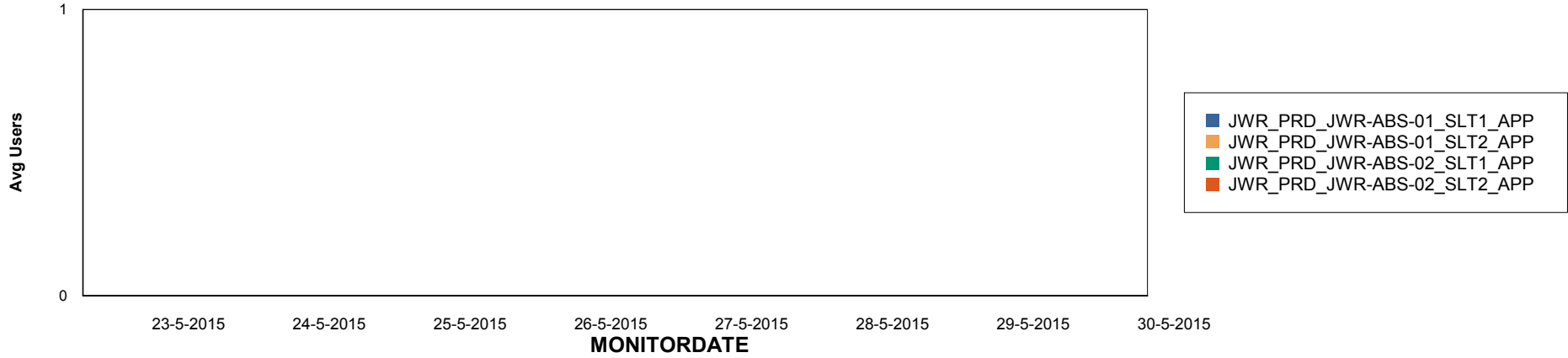
Weekly SLA Customer Report

Customer JWR Production
Database ID 43

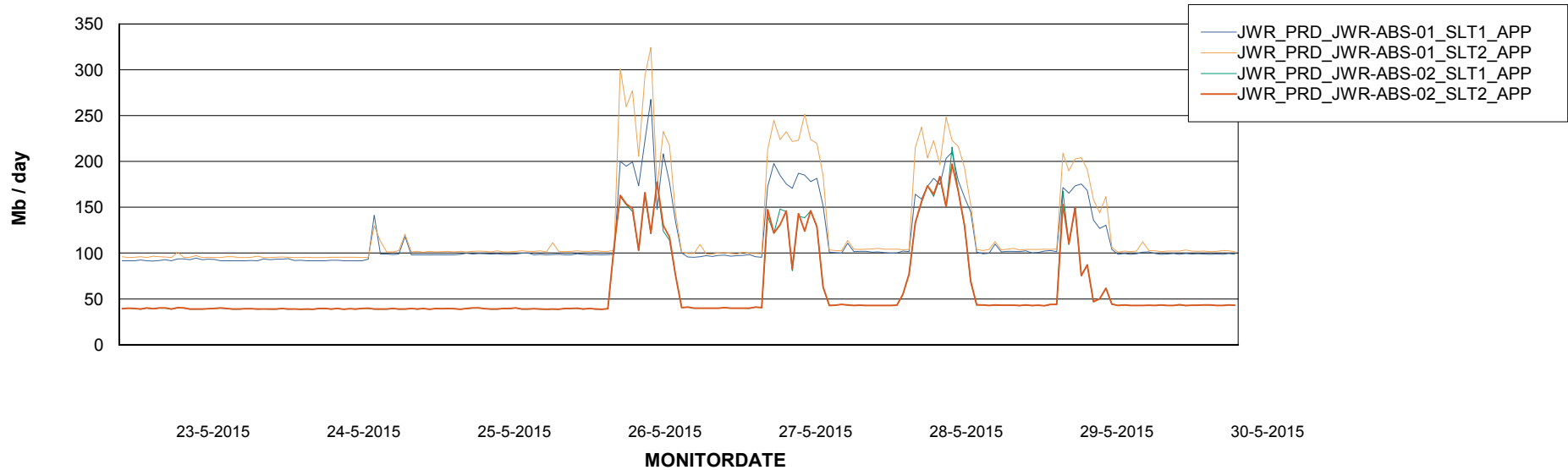


=====
ABSolute Application Server Services
=====

Disaster per ABS Server



Avg memory used per ABS Server Service



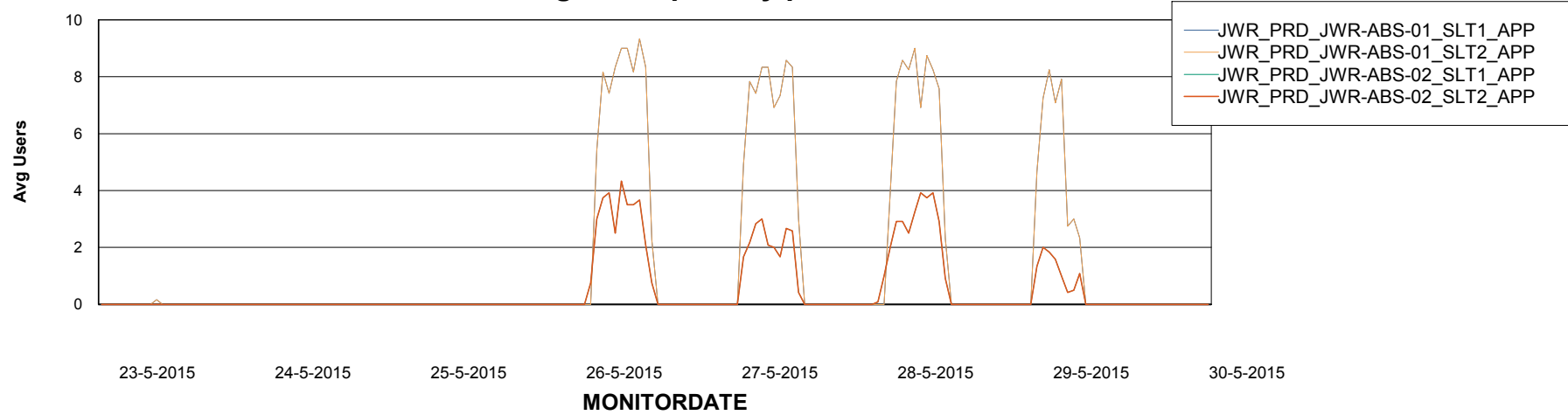
Weekly SLA Customer Report

Customer JWR Production
Database ID 43



=====
ABSolute Application Server Services
=====

Avg users per day per ABS server



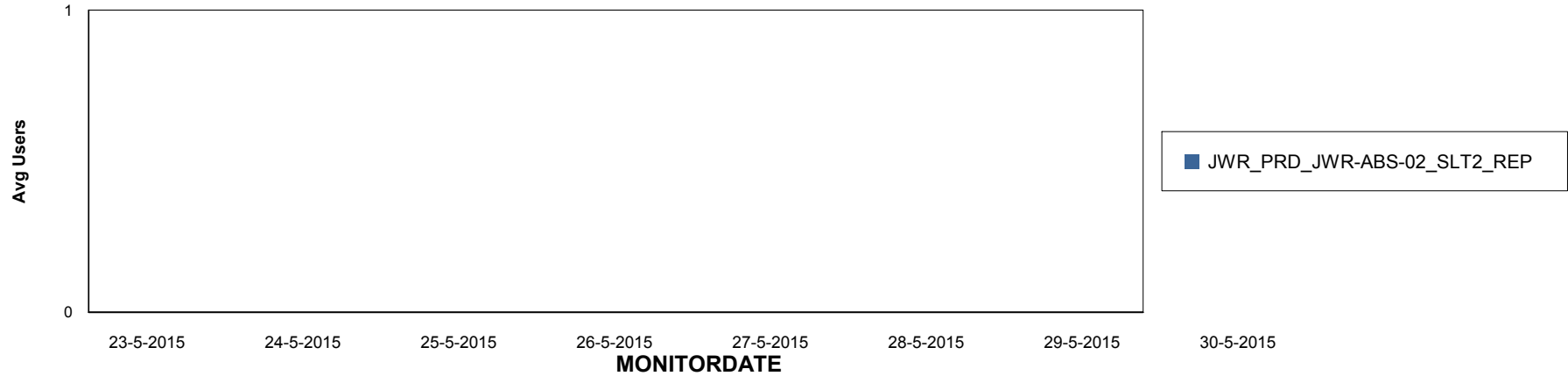
Weekly SLA Customer Report

Customer JWR Production
Database ID 43

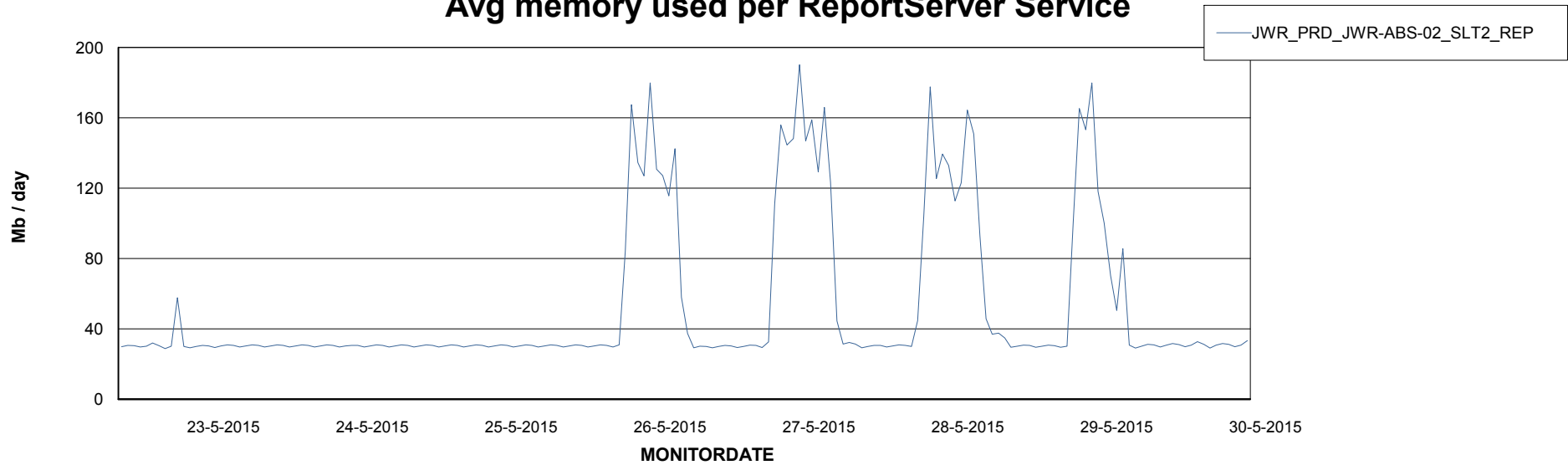


=====
ABSolute Application ReportServer Services
=====

Disaster per ReportServer



Avg memory used per ReportServer Service



Weekly SLA Customer Report

Customer JWR Production
Database ID 43



Disaster per ABS component

