

Weekly SLA Customer Report

Customer AUJ_Production
 Database ID 41



=====
 HARDDISK USAGE AUJ_PRD_ORACLE_BI1
 =====

	Used disk space on \$1 (GB)	Total disk space on \$1 (GB)	Free disk space on \$1 (GB)
23-5-2015	436	526	62
22-5-2015	429	526	70
21-5-2015	429	526	69
20-5-2015	429	526	69
19-5-2015	429	526	70
18-5-2015	428	526	71
17-5-2015	434	526	65

=====
 HARDDISK USAGE AUJ_PRD_ORACLE1
 =====

	Used disk space on \$1 (GB)	Total disk space on \$1 (GB)	Free disk space on \$1 (GB)	Used disk space on /abs2 (GB)	Used disk space on /bk (GB)
23-5-2015	68	290	67	242	672
22-5-2015	69	290	67	242	678
21-5-2015	69	290	67	242	677
20-5-2015	69	290	67	242	675
19-5-2015	69	290	67	242	675
18-5-2015	69	290	67	242	674
17-5-2015	68	290	67	242	672

Weekly SLA Customer Report

Customer AUJ_Production
 Database ID 41



=====
 HARDDISK USAGE AUJ_PRD_ORACLE2
 =====

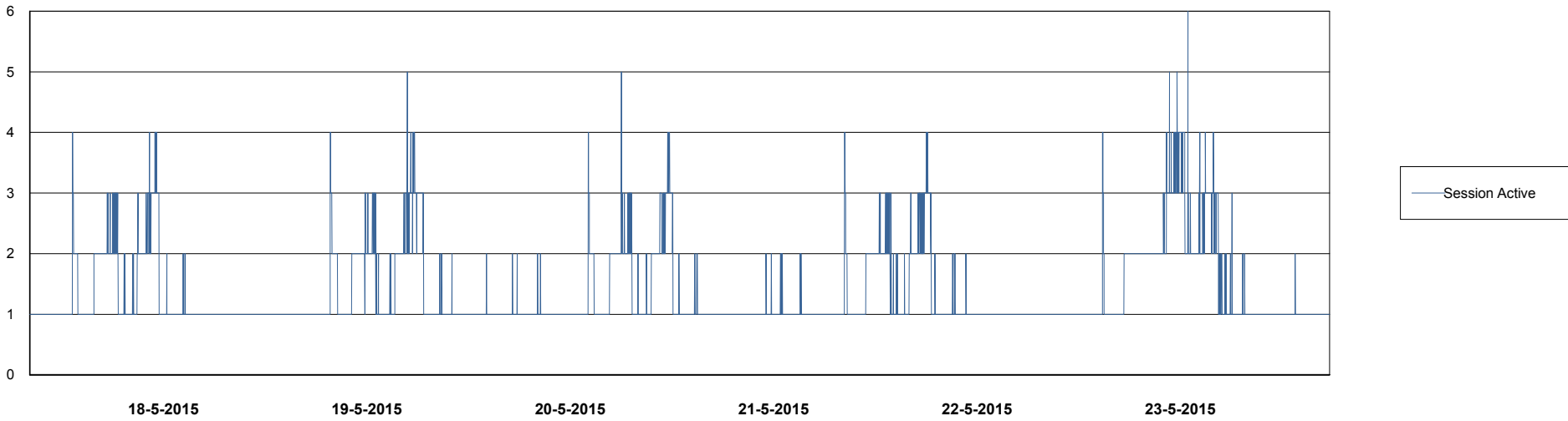
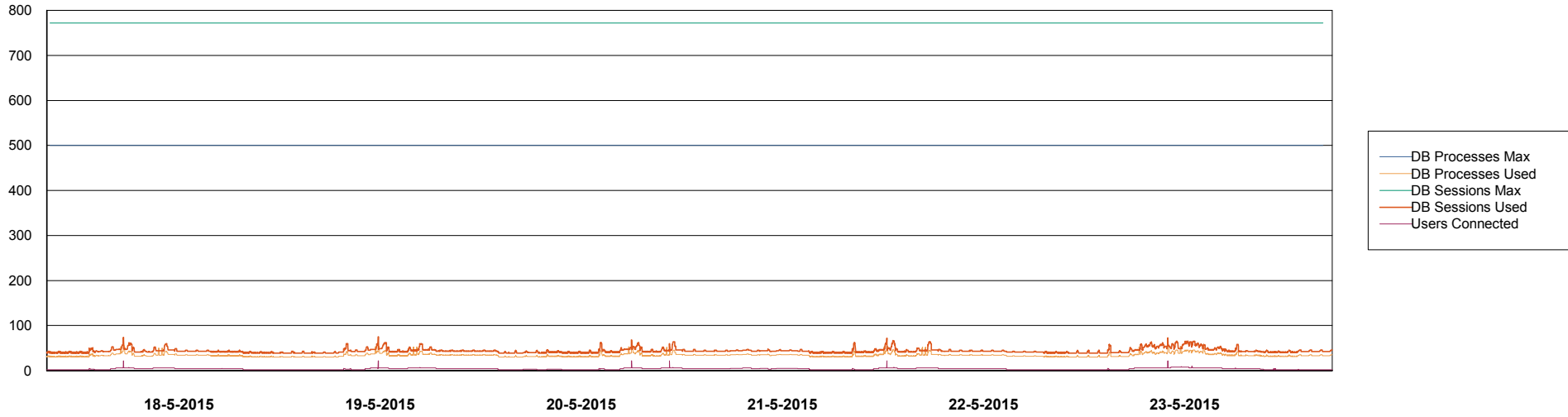
	Used disk space on \$1 (GB)	Total disk space on \$1 (GB)	Free disk space on \$1 (GB)
23-5-2015	66	174	97
22-5-2015	66	174	98
21-5-2015	66	174	98
20-5-2015	66	174	98
19-5-2015	66	174	98
18-5-2015	65	174	98
17-5-2015	65	174	98

Weekly SLA Customer Report

Customer AUJ_Production
Database ID 41



DATABASE PERFORMANCE AUJDB_BI

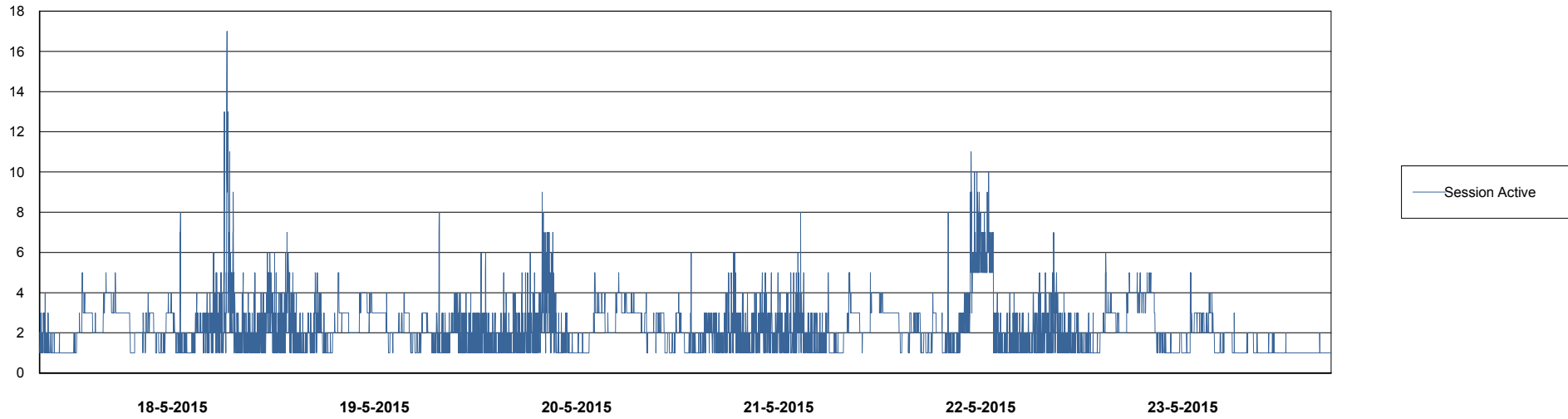
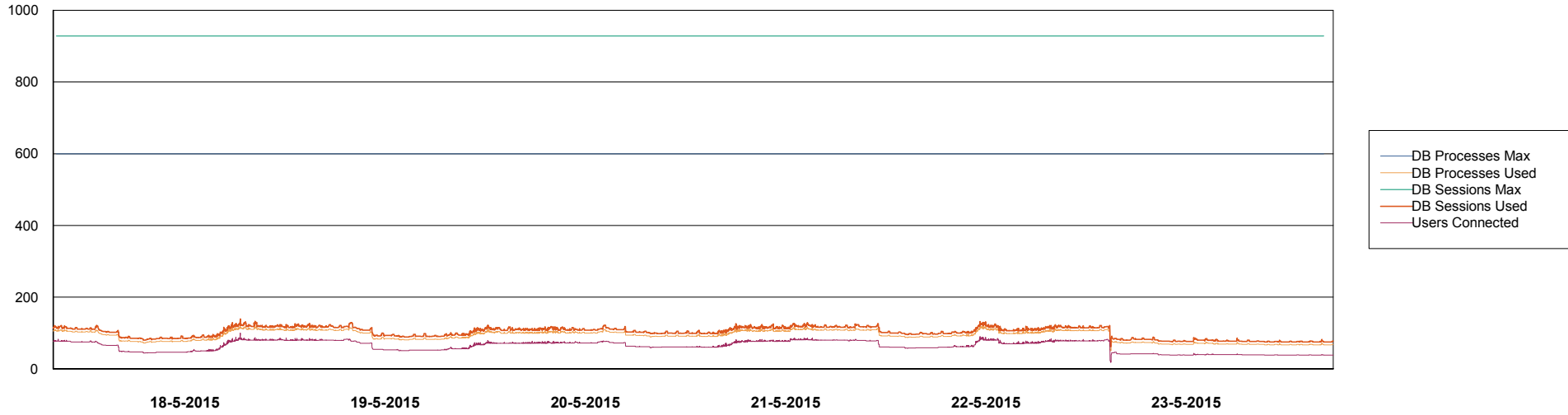


Weekly SLA Customer Report

Customer AUJ_Production
Database ID 41



DATABASE PERFORMANCE AUJDB_Production

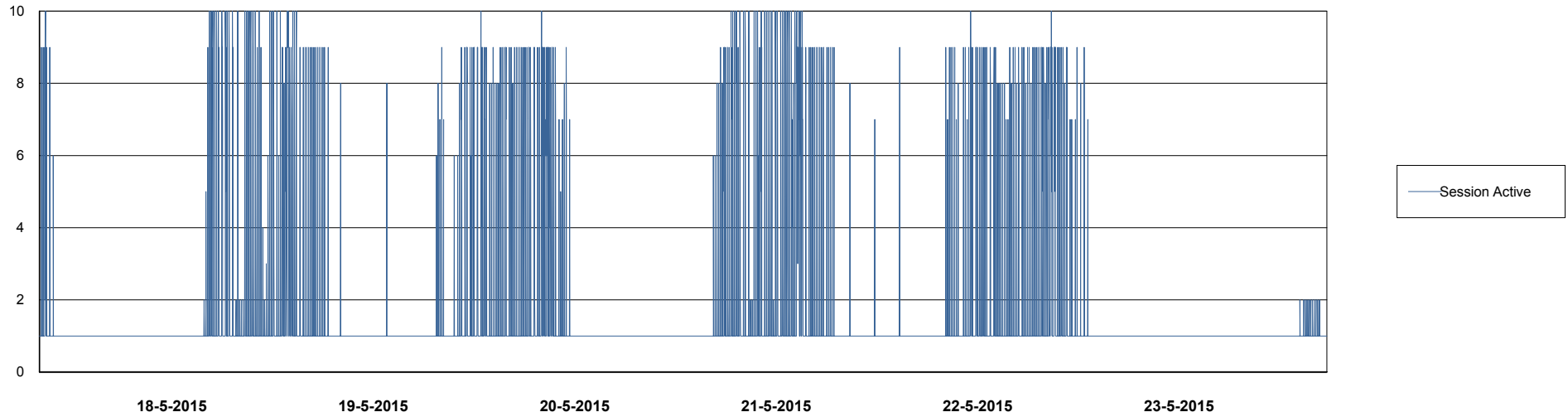
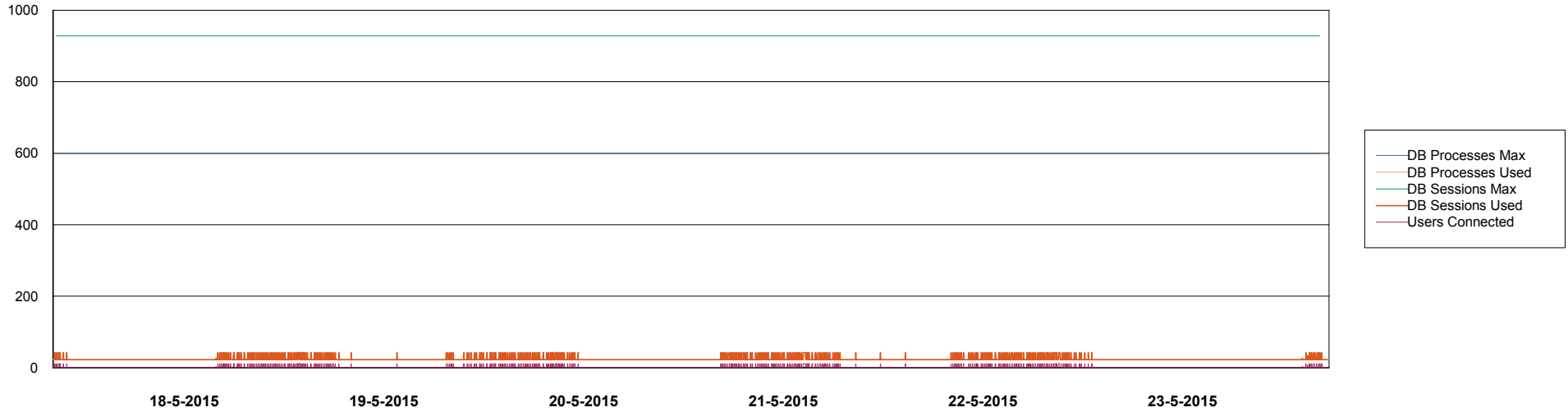


Weekly SLA Customer Report

Customer AUJ_Production
Database ID 41



DATABASE PERFORMANCE AUJDB_Standby

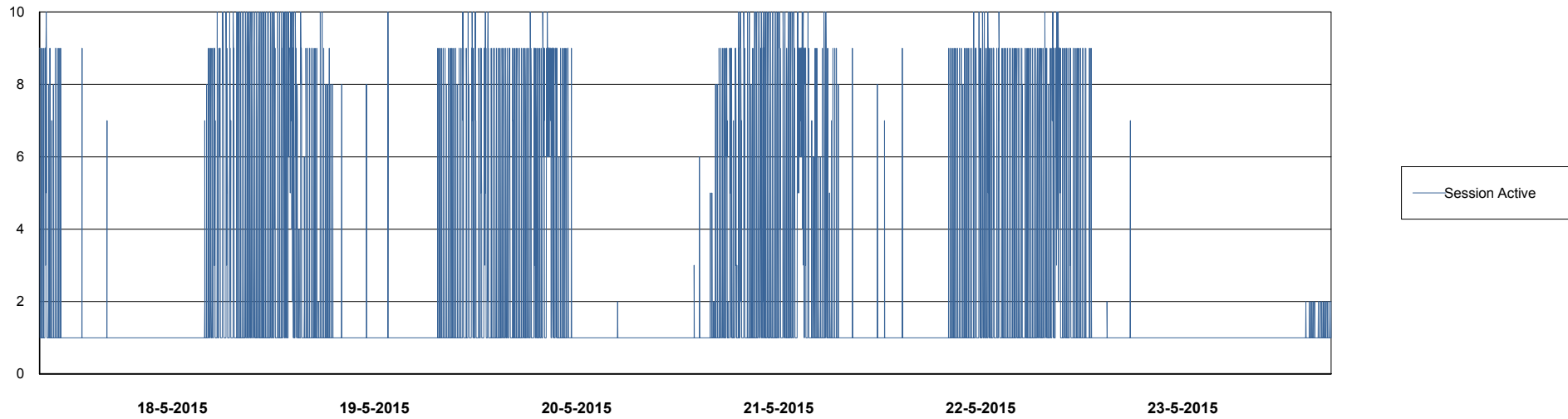
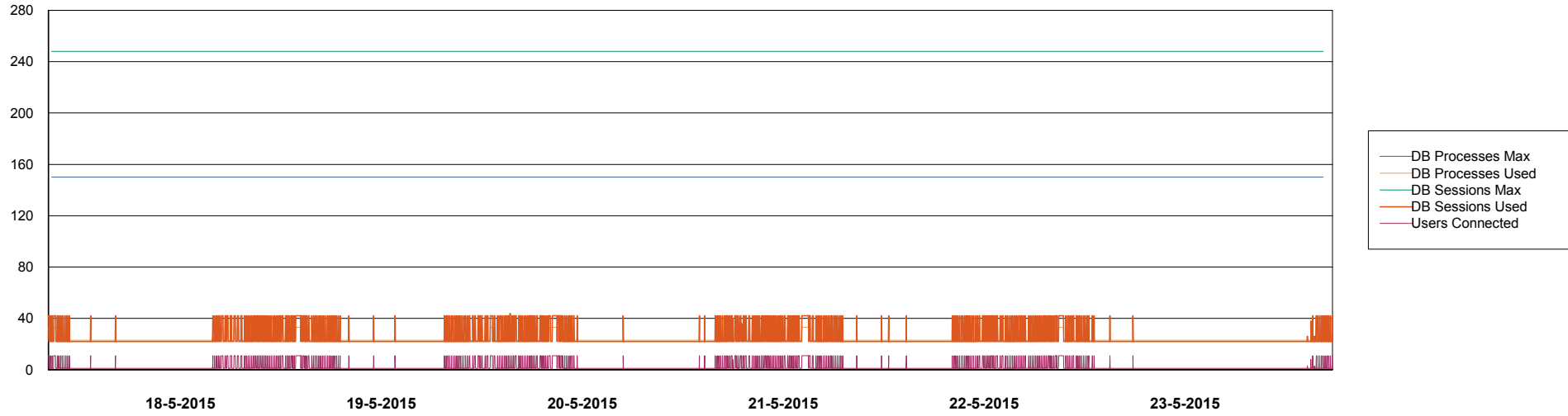


Weekly SLA Customer Report

Customer AUJ_Production
Database ID 41



DATABASE PERFORMANCE AUJDB3_Standby



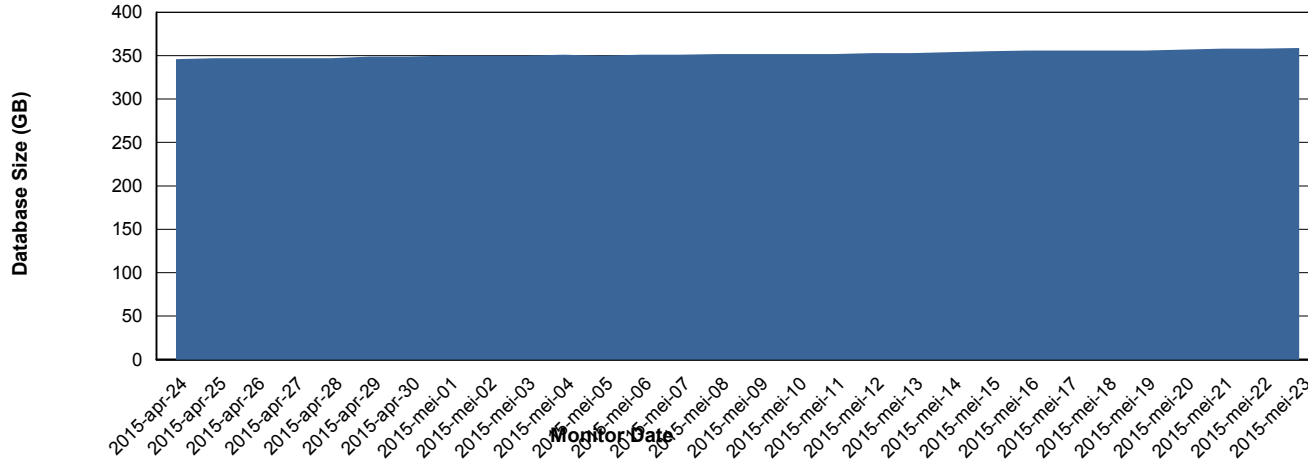
Weekly SLA Customer Report

Customer AUJ_Production
Database ID 41



=====
DATABASE SIZE AUJDB_Production
=====
=====

Database growth over last month



Weekly SLA Customer Report

Customer AUJ_Production
 Database ID 41



=====
 DATABASE TABLESPACES AUJDB_BI
 =====

TOTAL DATABASE SIZE PER TABLESPACE

Date	Tablespace Name	Filesize (Gb)	Usedsize (Gb)	Percentage free
23-5-2015	ABSDATA	112	87	22
	INDX	187	153	18
22-5-2015	ABSDATA	112	87	22
	INDX	187	153	18
21-5-2015	ABSDATA	112	87	22
	INDX	187	153	18
20-5-2015	ABSDATA	112	87	22
	INDX	187	153	18
19-5-2015	ABSDATA	112	87	22
	INDX	187	153	18
18-5-2015	ABSDATA	112	87	22
	INDX	187	153	18
17-5-2015	ABSDATA	112	87	22
	INDX	187	152	19

Weekly SLA Customer Report

Customer AUJ_Production
 Database ID 41



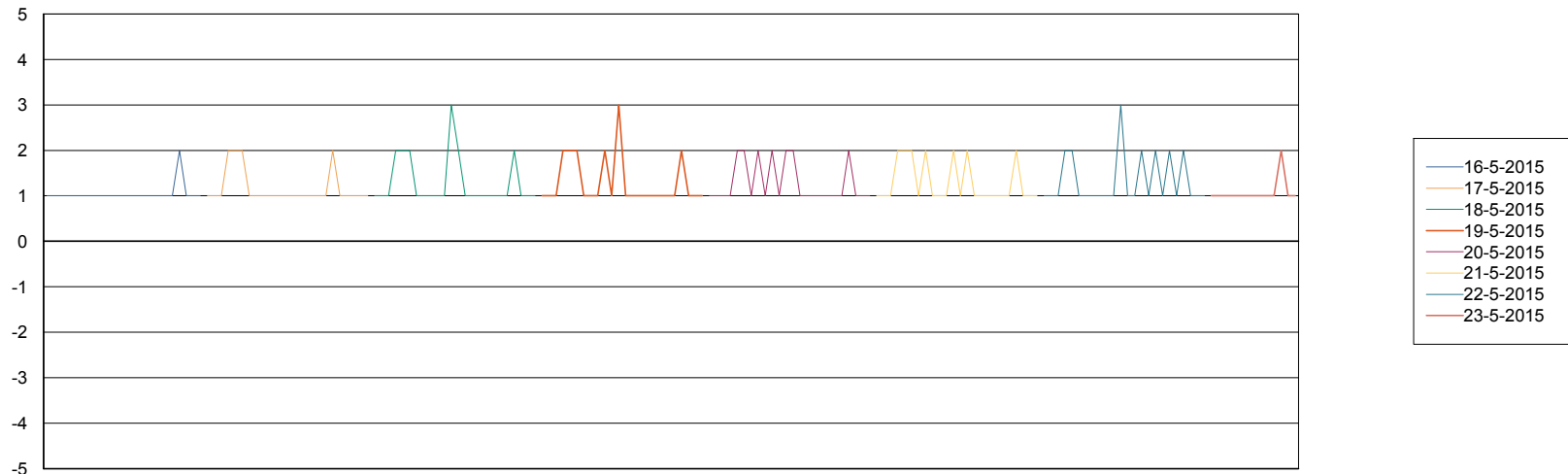
=====
 DATABASE TABLESPACES AUJDB_Production
 =====

TOTAL DATABASE SIZE PER TABLESPACE

Date	Tablespace Name	Filesize (Gb)	Usedsize (Gb)	Percentage free
23-5-2015	ABSDATA	176	152	14
	INDX	241	205	15
22-5-2015	ABSDATA	176	152	14
	INDX	241	205	15
21-5-2015	ABSDATA	176	152	14
	INDX	241	205	15
20-5-2015	ABSDATA	176	151	14
	INDX	241	204	15
19-5-2015	ABSDATA	176	151	14
	INDX	241	204	15
18-5-2015	ABSDATA	176	151	14
	INDX	241	204	15
17-5-2015	ABSDATA	176	150	15
	INDX	241	203	16

=====
 STANDBY DATABASE HEALTH AUJ_Production
 =====

Recovery lag for last 7 days



Weekly SLA Customer Report

Customer AUJ_Production
Database ID 41

