

# Weekly SLA Customer Report

Customer NIX\_Production  
Database ID 51



=====  
HARDDISK USAGE NIX\_PRD\_ABSAPP1  
=====

	Total disk space on C (GB)	Free disk space on C (GB)
16-5-2015	136	84
15-5-2015	136	84
14-5-2015	136	84
13-5-2015	136	84
12-5-2015	136	84
11-5-2015	136	84
10-5-2015	136	84

=====  
HARDDISK USAGE NIX\_PRD\_ABSAPP2  
=====

	Total disk space on C (GB)	Free disk space on C (GB)
16-5-2015	200	178
15-5-2015	200	178
14-5-2015	200	178
13-5-2015	200	179
12-5-2015	200	179
11-5-2015	200	179
10-5-2015	200	179

## Weekly SLA Customer Report

Customer      NIX\_Production  
 Database ID    51



=====  
 HARDDISK USAGE    NIX\_PRD\_ABSAPP3  
 =====

	Total disk space on C (GB)	Free disk space on C (GB)
16-5-2015	200	181
15-5-2015	200	181
14-5-2015	200	181
13-5-2015	200	181
12-5-2015	200	182
11-5-2015	200	182
10-5-2015	200	182

=====  
 HARDDISK USAGE    NIX\_PRD\_ABSWEB1  
 =====

	Total disk space on C (GB)	Free disk space on C (GB)	Total disk space on D (GB)
16-5-2015	930	719	3
15-5-2015	930	719	3
14-5-2015	930	719	3
13-5-2015	930	720	3
12-5-2015	930	720	3
11-5-2015	930	720	3
10-5-2015	930	720	3

# Weekly SLA Customer Report

Customer      NIX\_Production  
 Database ID    51



=====  
 HARDDISK USAGE    NIX\_PRD\_ORACLE\_BI01  
 =====

	Total disk space on C (GB)	Free disk space on C (GB)	Total disk space on E (GB)	Free disk space on E (GB)	Total disk space on F (GB)	Free disk space on F (GB)	Total disk space on G (GB)	Free disk space on G (GB)
16-5-2015	279	204	558	489	558	458	279	240
15-5-2015	279	204	558	489	558	458	279	240
14-5-2015	279	203	558	489	558	458	279	240
13-5-2015	279	202	558	489	558	458	279	240
12-5-2015	279	201	558	489	558	458	279	240
11-5-2015	279	201	558	489	558	458	279	240
10-5-2015	279	201	558	489	558	458	279	240

=====  
 HARDDISK USAGE    NIX\_PRD\_ORACLE\_BI1  
 =====

	Total disk space on C (GB)	Free disk space on C (GB)	Total disk space on D (GB)	Free disk space on D (GB)	Total disk space on E (GB)	Free disk space on E (GB)
12-5-2015	139	88	279	169	99	32
11-5-2015	139	88	279	169	99	32
10-5-2015	139	88	279	169	99	32

=====  
 HARDDISK USAGE    NIX\_PRD\_ORCDB1  
 =====

## Weekly SLA Customer Report

Customer      NIX\_Production  
 Database ID    51



	Total disk space on C (GB)	Free disk space on C (GB)	Total disk space on D (GB)	Free disk space on D (GB)	Total disk space on E (GB)	Free disk space on E (GB)
16-5-2015	136	67	136	27	136	46
15-5-2015	136	66	136	27	136	49
14-5-2015	136	67	136	27	136	49
13-5-2015	136	67	136	27	136	49
12-5-2015	136	67	136	27	136	49
11-5-2015	136	67	136	27	136	49
10-5-2015	136	67	136	27	136	49

=====

HARDDISK USAGE    NIX\_PRD\_ORCDB2

=====

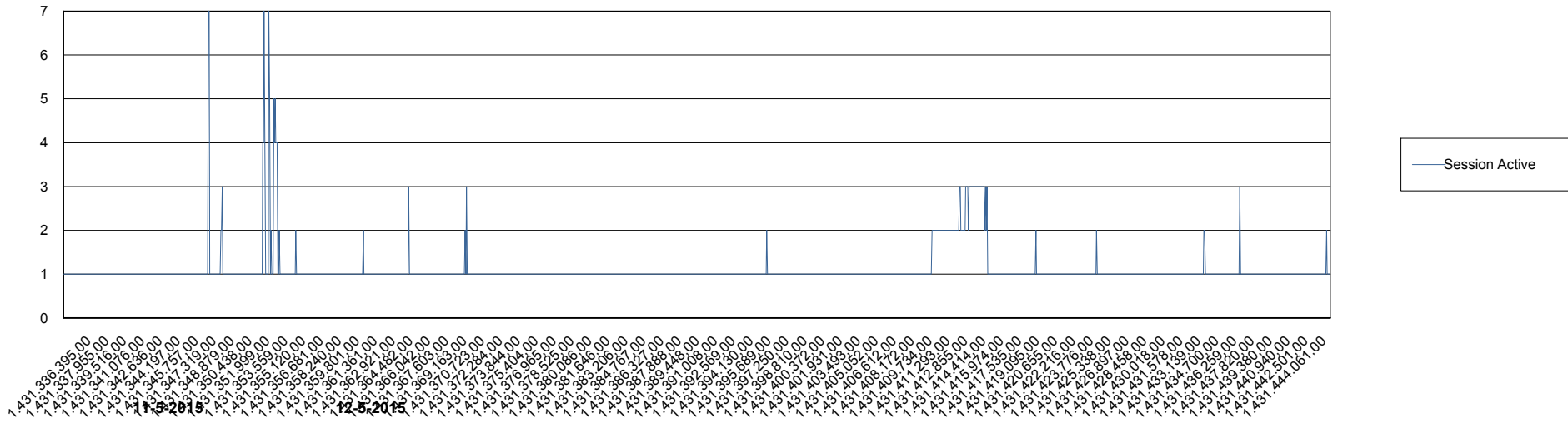
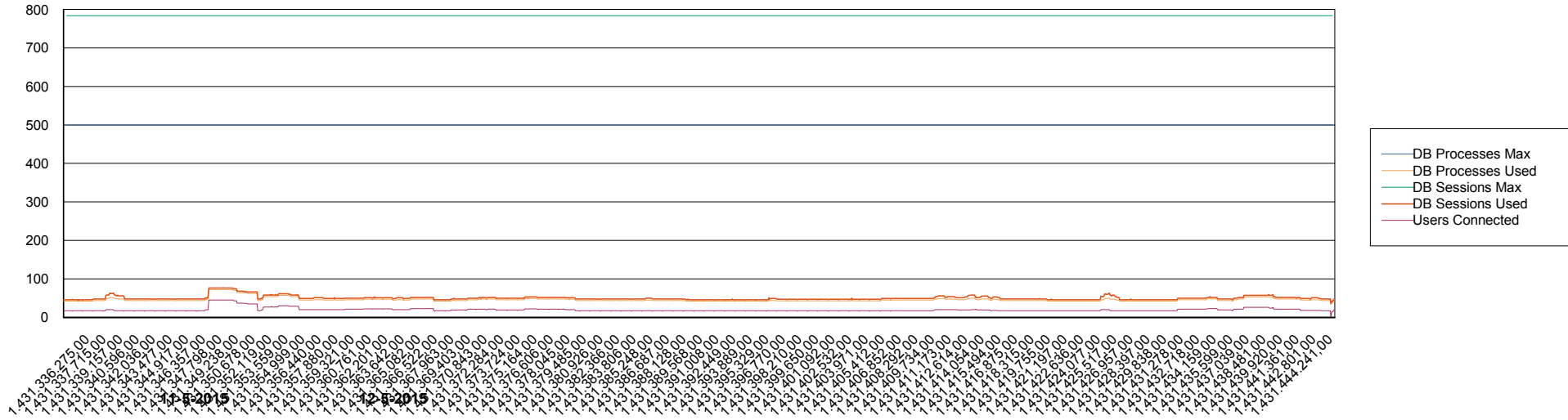
	Total disk space on C (GB)	Free disk space on C (GB)	Total disk space on D (GB)	Free disk space on D (GB)	Total disk space on E (GB)	Free disk space on E (GB)
16-5-2015	279	60	279	43	279	152
15-5-2015	279	60	279	43	279	157
14-5-2015	279	60	279	43	279	148
13-5-2015	279	60	279	43	279	148
12-5-2015	279	60	279	43	279	147
11-5-2015	279	60	279	43	279	149
10-5-2015	279	60	279	43	279	147

# Weekly SLA Customer Report

Customer NIX\_Production  
Database ID 51



## DATABASE PERFORMANCE NIXDB\_BI



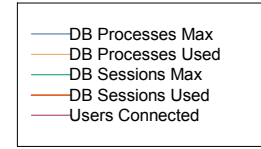
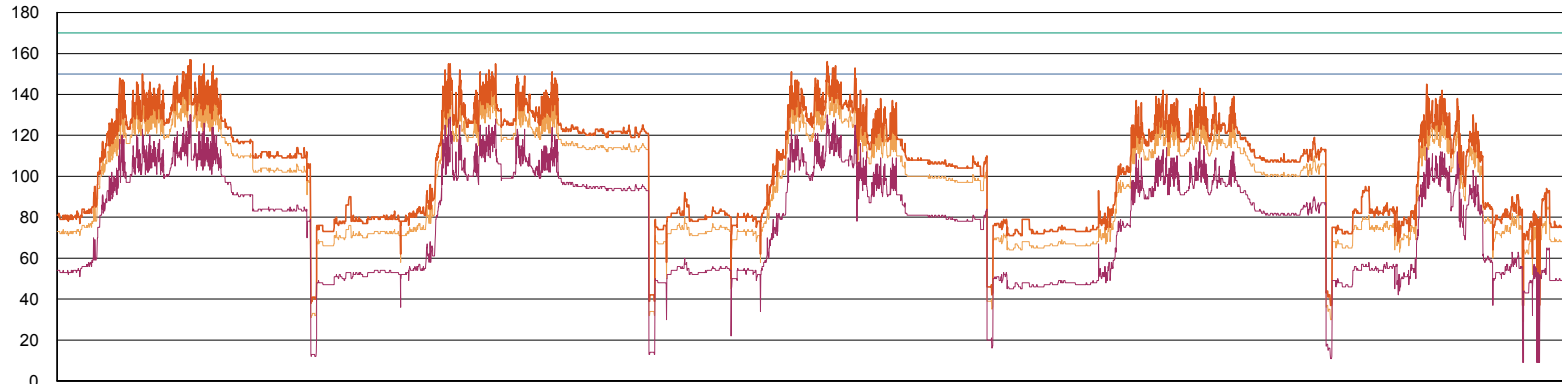
# Weekly SLA Customer Report

Customer NIX\_Production  
Database ID 51

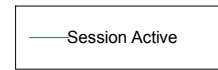
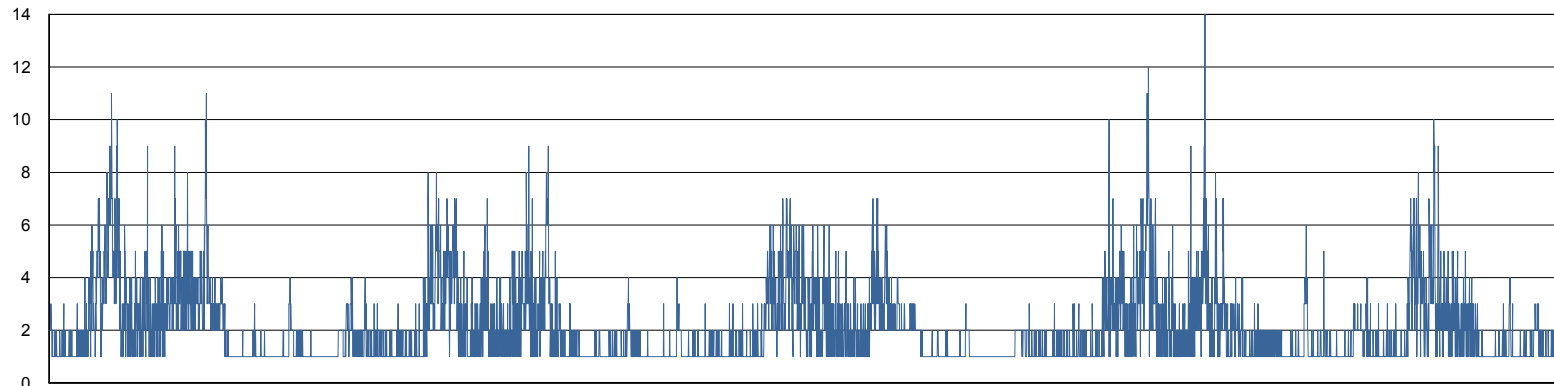


## DATABASE PERFORMANCE

NIXDB\_Production



11-5-2015      12-5-2015      13-5-2015      14-5-2015      15-5-2015      16-5-2015



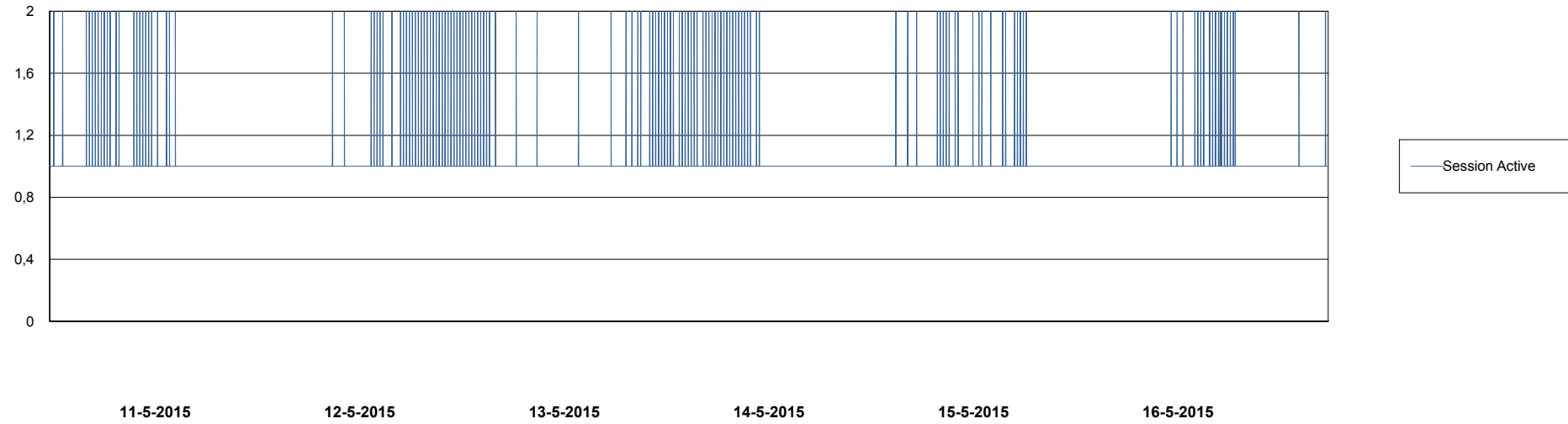
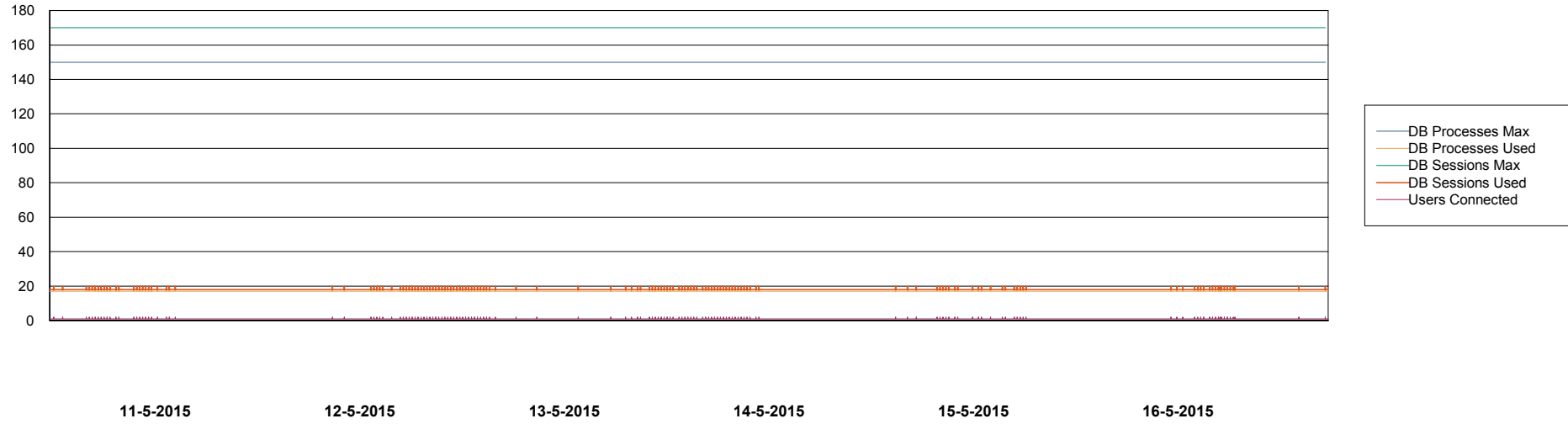
11-5-2015      12-5-2015      13-5-2015      14-5-2015      15-5-2015      16-5-2015

# Weekly SLA Customer Report

Customer NIX\_Production  
Database ID 51



DATABASE PERFORMANCE NIXDB\_Standby



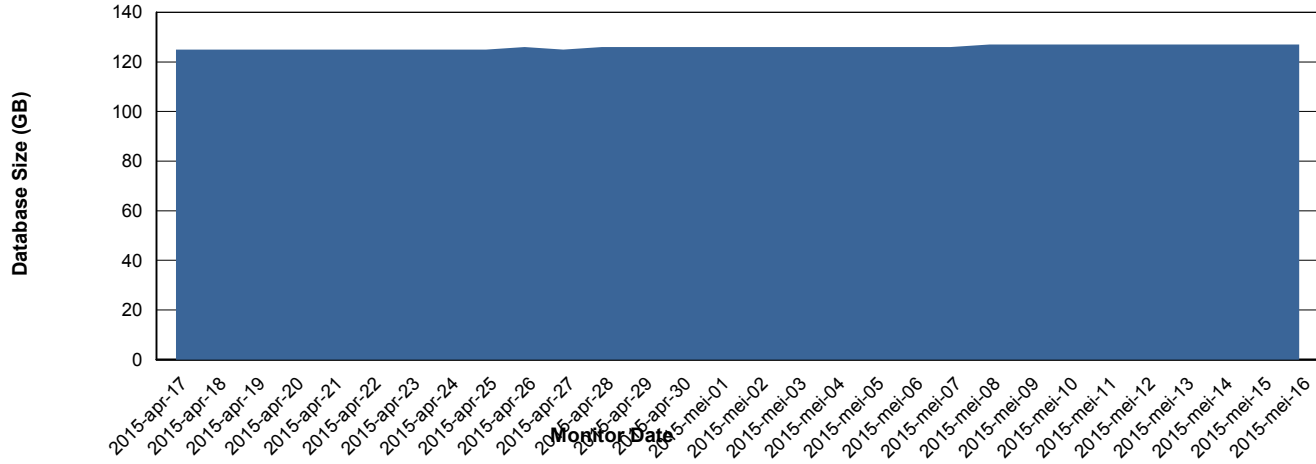
# Weekly SLA Customer Report

Customer NIX\_Production  
Database ID 51



=====  
DATABASE SIZE NIXDB\_Production  
=====

## Database growth over last month



# Weekly SLA Customer Report

Customer NIX\_Production  
Database ID 51



=====  
DATABASE TABLESPACES NIXDB\_BI  
=====

TOTAL DATABASE SIZE PER TABLESPACE

Date	Tablespace Name	Filesize (Gb)	Usedsize (Gb)	Percentage free
12-5-2015	ABSDATA	28	21	25
	INDX	44	33	25
11-5-2015	ABSDATA	28	21	25
	INDX	44	33	25
10-5-2015	ABSDATA	28	21	25
	INDX	44	33	25

# Weekly SLA Customer Report

Customer NIX\_Production  
 Database ID 51



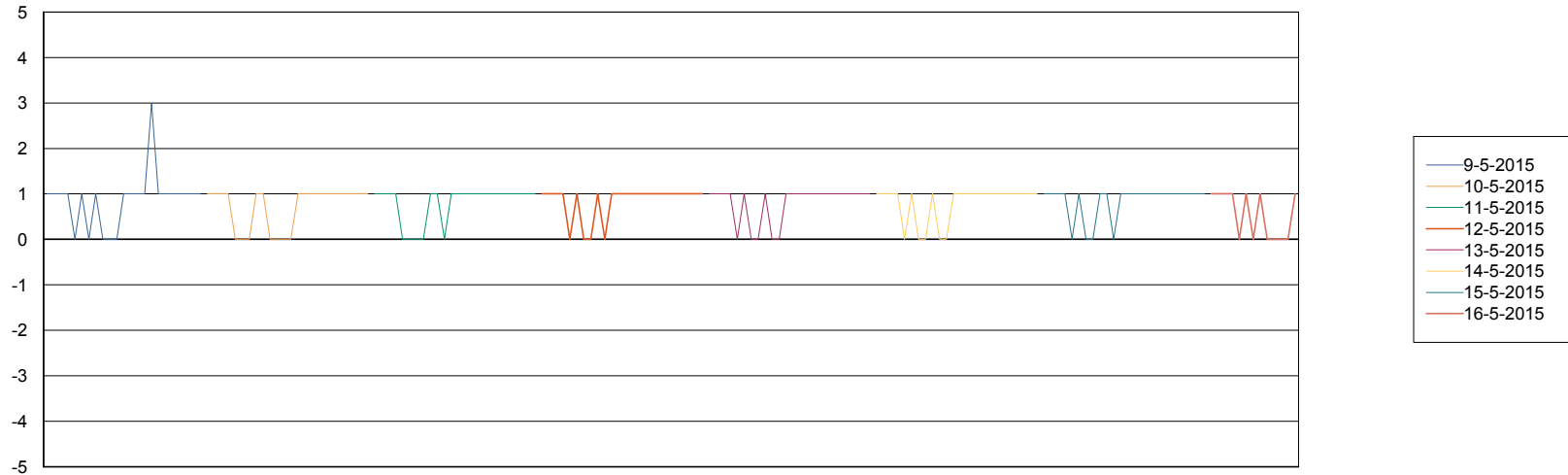
=====  
 DATABASE TABLESPACES NIXDB\_Production  
 =====

TOTAL DATABASE SIZE PER TABLESPACE

Date	Tablespace Name	Filesize (Gb)	Usedsize (Gb)	Percentage free
16-5-2015	ABSDATA	40	33	18
	INDX	109	92	16
15-5-2015	ABSDATA	40	33	18
	INDX	109	92	16
14-5-2015	ABSDATA	40	33	18
	INDX	109	92	16
13-5-2015	ABSDATA	40	33	18
	INDX	109	92	16
12-5-2015	ABSDATA	40	32	20
	INDX	109	92	16
11-5-2015	ABSDATA	40	32	20
	INDX	109	92	16
10-5-2015	ABSDATA	40	32	20
	INDX	109	92	16

=====  
 STANDBY DATABASE HEALTH NIX\_Production  
 =====

Recovery lag for last 7 days



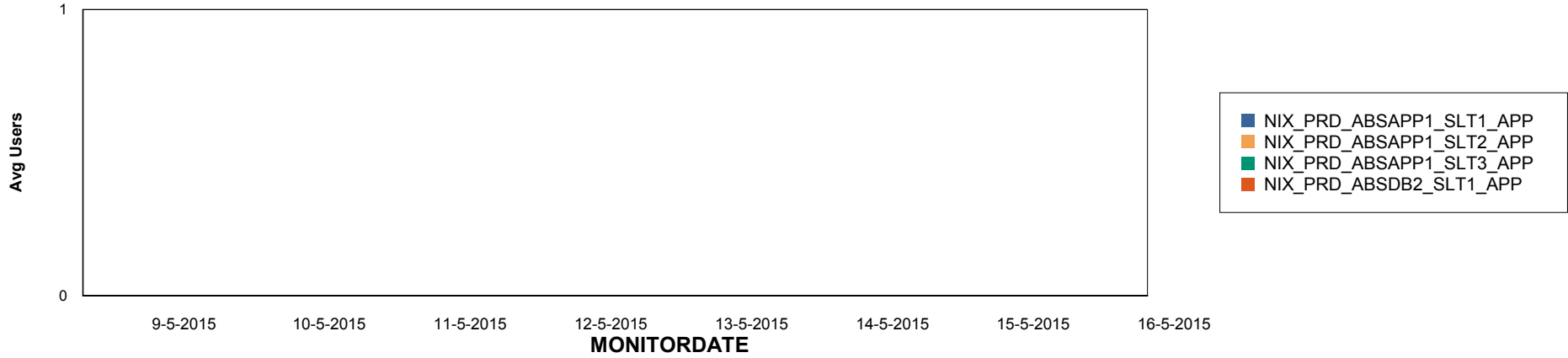
# Weekly SLA Customer Report

Customer NIX\_Production  
Database ID 51

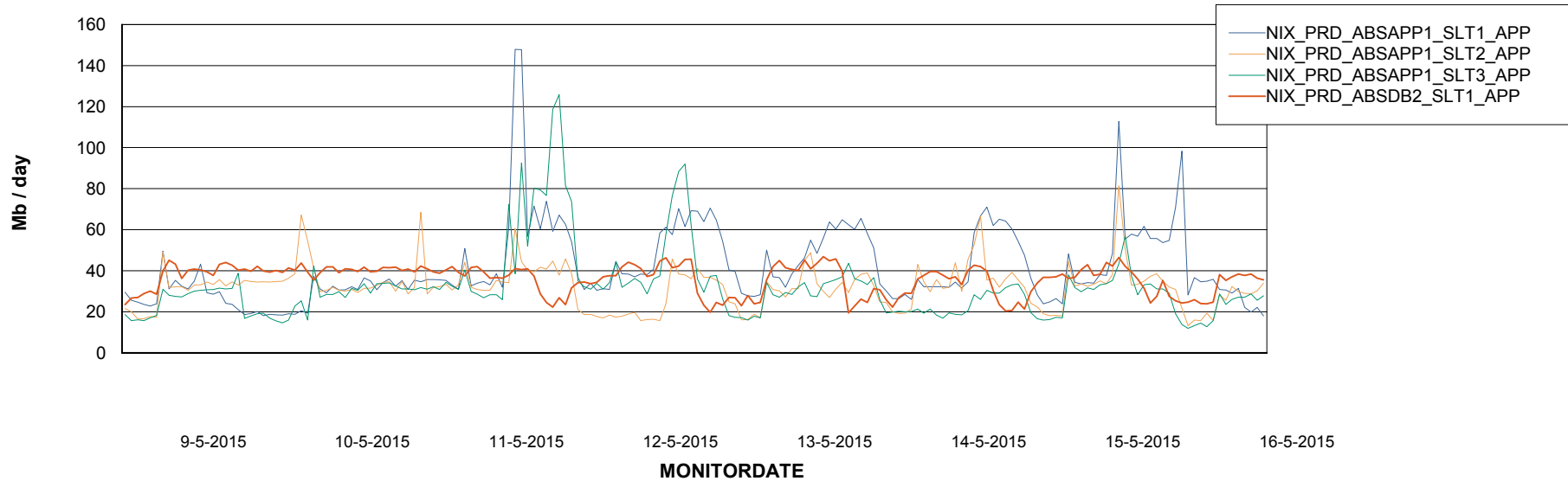


=====  
ABSolute Application Server Services  
=====

## Disaster per ABS Server



## Avg memory used per ABS Server Service



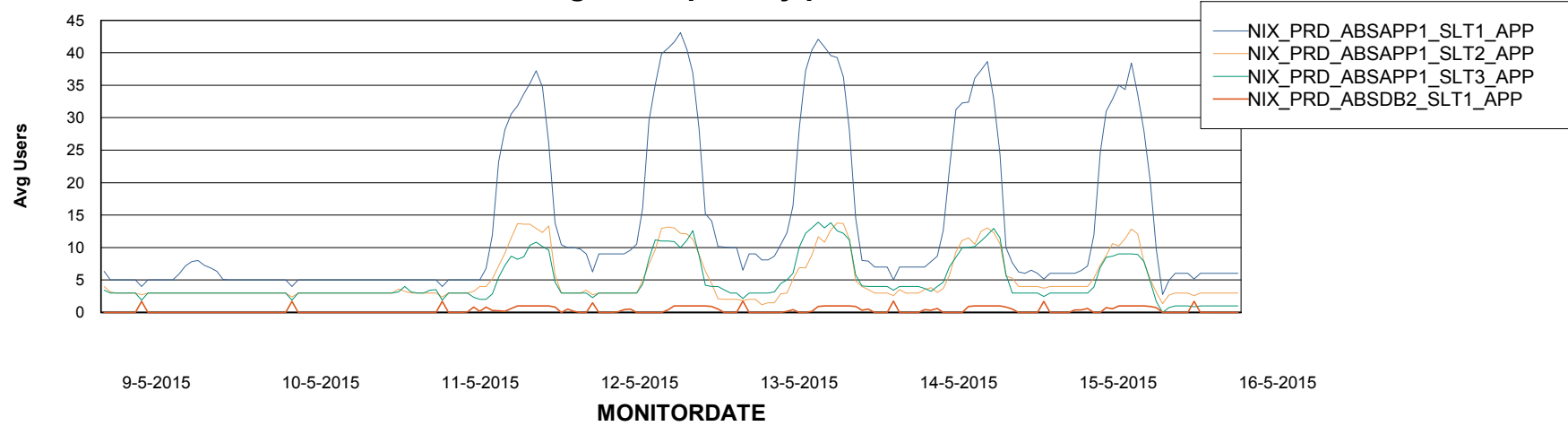
# Weekly SLA Customer Report

Customer NIX\_Production  
Database ID 51



=====  
ABSolute Application Server Services  
=====

### Avg users per day per ABS server



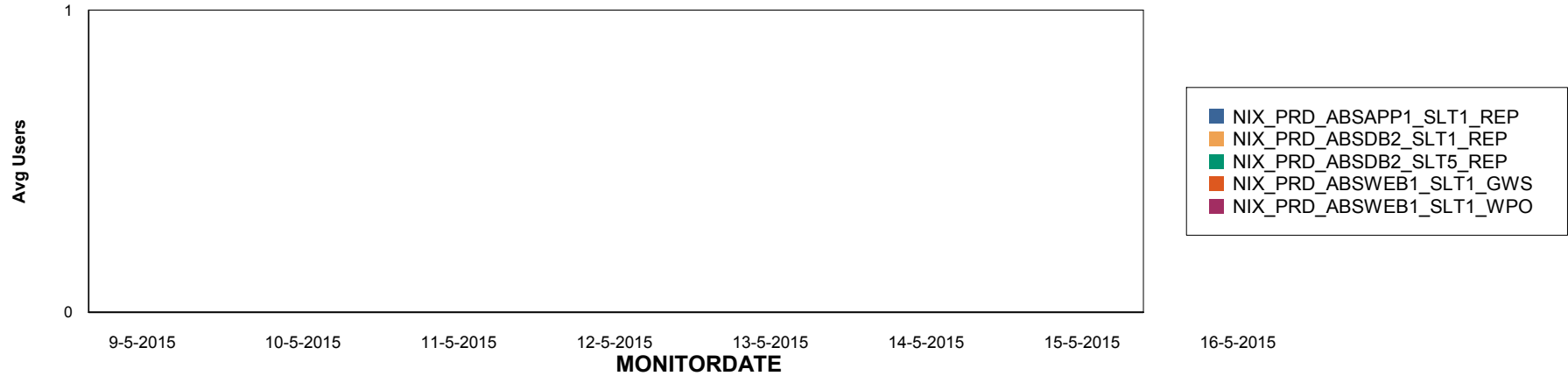
# Weekly SLA Customer Report

Customer NIX\_Production  
Database ID 51

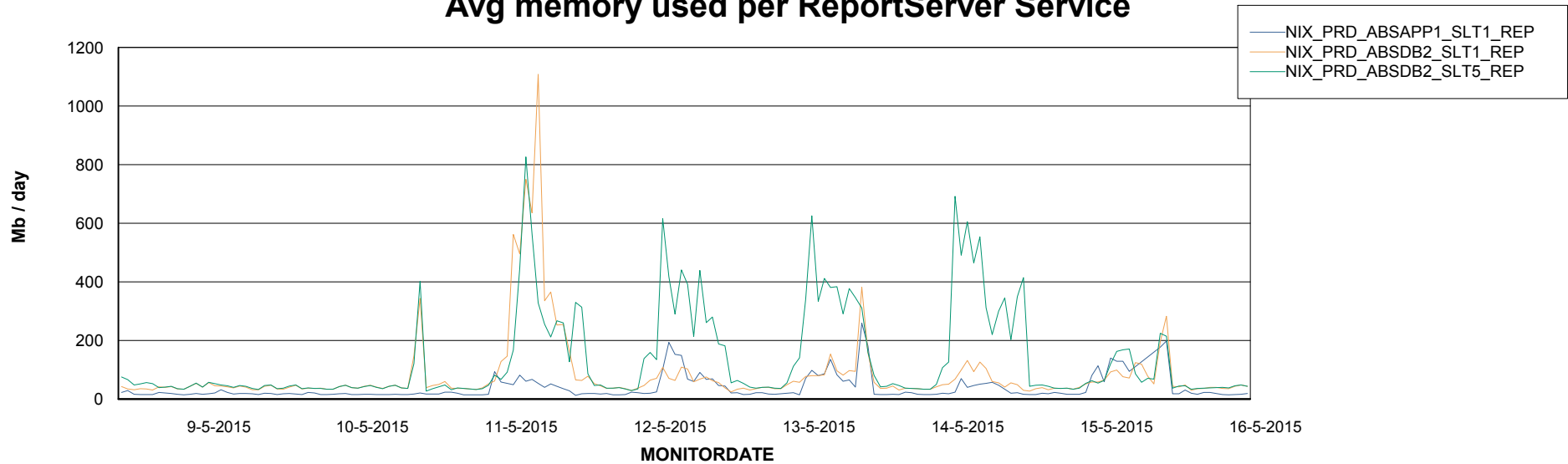


=====  
ABSolute Application ReportServer Services  
=====

## Disaster per ReportServer



## Avg memory used per ReportServer Service



# Weekly SLA Customer Report

Customer NIX\_Production  
Database ID 51



## Disaster per ABS component

