

Weekly SLA Customer Report

Customer JWR Production
 Database ID 43



=====
 HARDDISK USAGE JWR_PRD_JWR-ABS-01
 =====

	Used disk space on / (GB)	Total disk space on / (GB)	Free disk space on / (GB)
16-5-2015	29	49	17
15-5-2015	28	49	19
14-5-2015	28	49	19
13-5-2015	28	49	18
12-5-2015	28	49	18
11-5-2015	29	49	17
10-5-2015	29	49	17

=====
 HARDDISK USAGE JWR_PRD_JWR-ABS-02
 =====

	Used disk space on / (GB)	Total disk space on / (GB)	Free disk space on / (GB)
16-5-2015	30	49	17
15-5-2015	30	49	17
14-5-2015	30	49	17
13-5-2015	30	49	17
12-5-2015	30	49	17
11-5-2015	29	49	17
10-5-2015	29	49	17

Weekly SLA Customer Report

Customer JWR Production
 Database ID 43



=====

HARDDISK USAGE JWR_PRD_JWR-ODB-01

=====

	Used disk space on / (GB)	Total disk space on / (GB)	Free disk space on / (GB)
16-5-2015	82	148	59
15-5-2015	82	148	58
14-5-2015	82	148	58
13-5-2015	83	148	58
12-5-2015	83	148	58
11-5-2015	83	148	58
10-5-2015	82	148	59

=====

HARDDISK USAGE JWR_PRD_JWR-ODB-02

=====

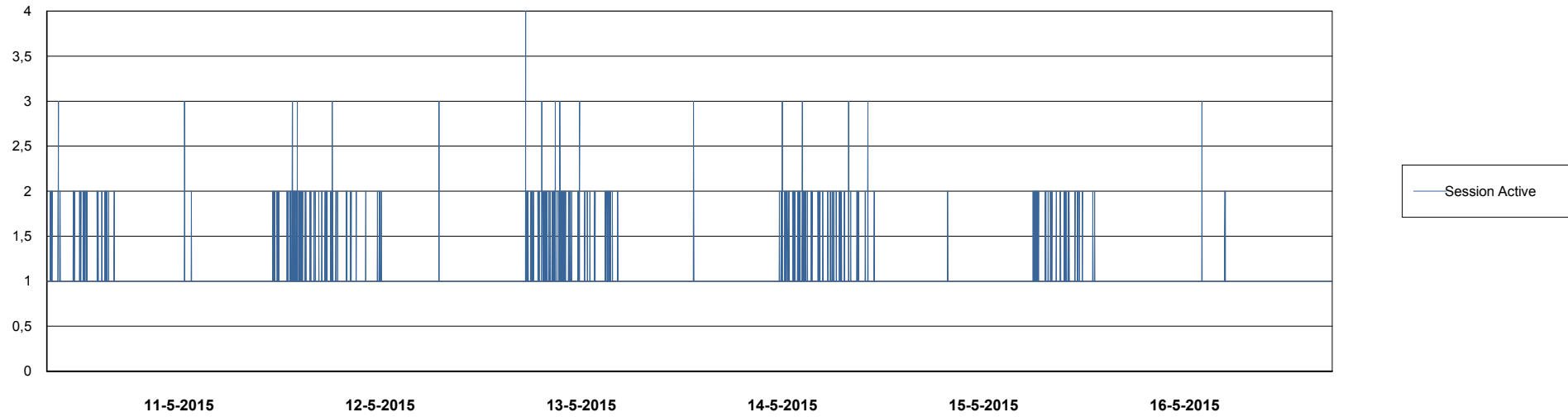
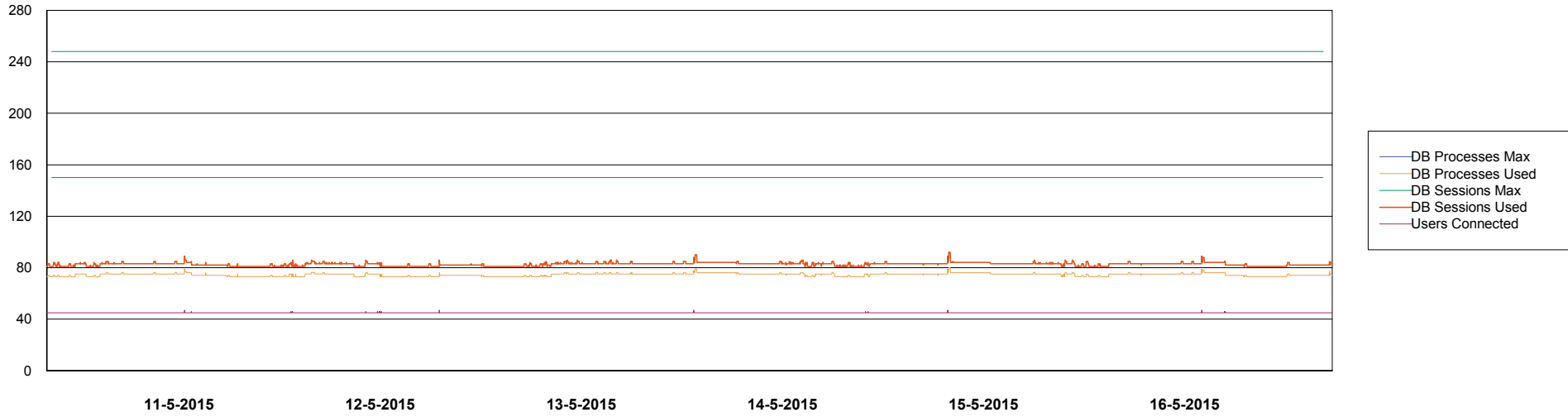
	Used disk space on / (GB)	Total disk space on / (GB)	Free disk space on / (GB)
16-5-2015	92	138	39
15-5-2015	92	138	39
14-5-2015	92	138	39
13-5-2015	92	138	39
12-5-2015	92	138	39
11-5-2015	92	138	39
10-5-2015	92	138	39

Weekly SLA Customer Report

Customer JWR Production
Database ID 43



DATABASE PERFORMANCE JWRDB_Production



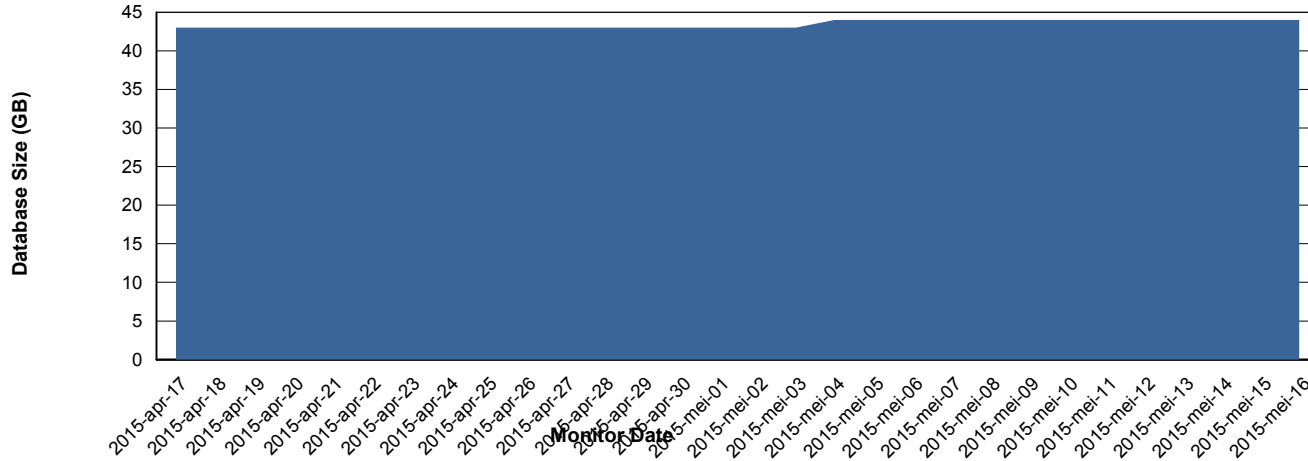
Weekly SLA Customer Report

Customer JWR Production
 Database ID 43



=====
 DATABASE SIZE JWRDB_Production
 =====

Database growth over last month



=====
 DATABASE TABLESPACES JWRDB_Production
 =====

TOTAL DATABASE SIZE PER TABLESPACE

Date	Tablespace Name	Filesize (Gb)	Usedsize (Gb)	Percentage free
16-5-2015	ABSDATA	18	12	33
	INDX	38	31	18
15-5-2015	ABSDATA	18	12	33
	INDX	38	31	18
14-5-2015	ABSDATA	18	12	33
	INDX	38	31	18
13-5-2015	ABSDATA	18	12	33
	INDX	38	31	18
12-5-2015	ABSDATA	18	12	33
	INDX	38	31	18
11-5-2015	ABSDATA	18	12	33
	INDX	38	31	18
10-5-2015	ABSDATA	18	12	33
	INDX	38	31	18

Weekly SLA Customer Report

Customer JWR Production
Database ID 43



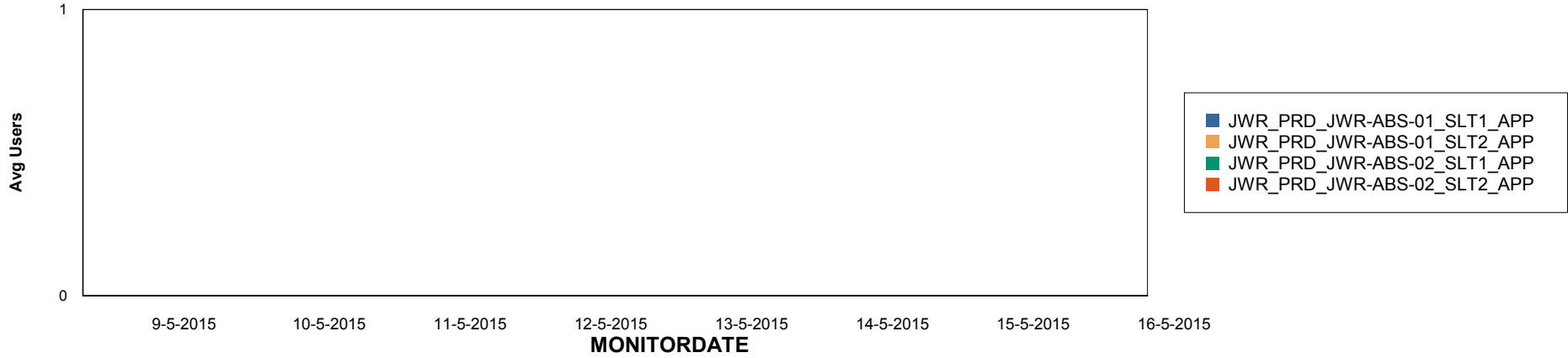
Weekly SLA Customer Report

Customer JWR Production
Database ID 43

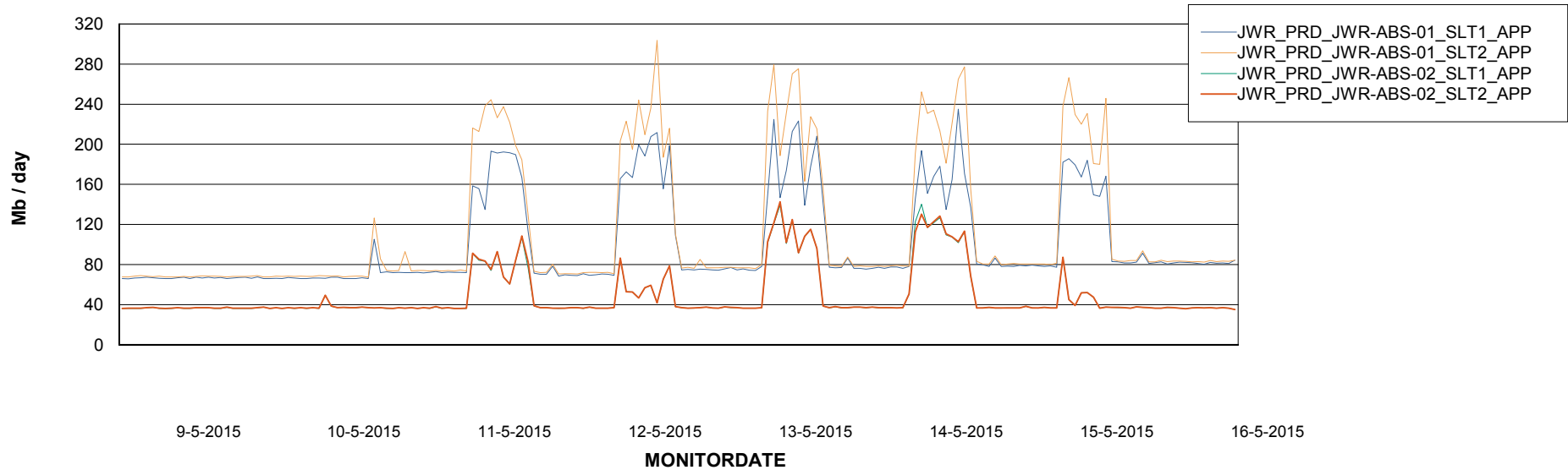


=====
ABSolute Application Server Services
=====

Disaster per ABS Server



Avg memory used per ABS Server Service



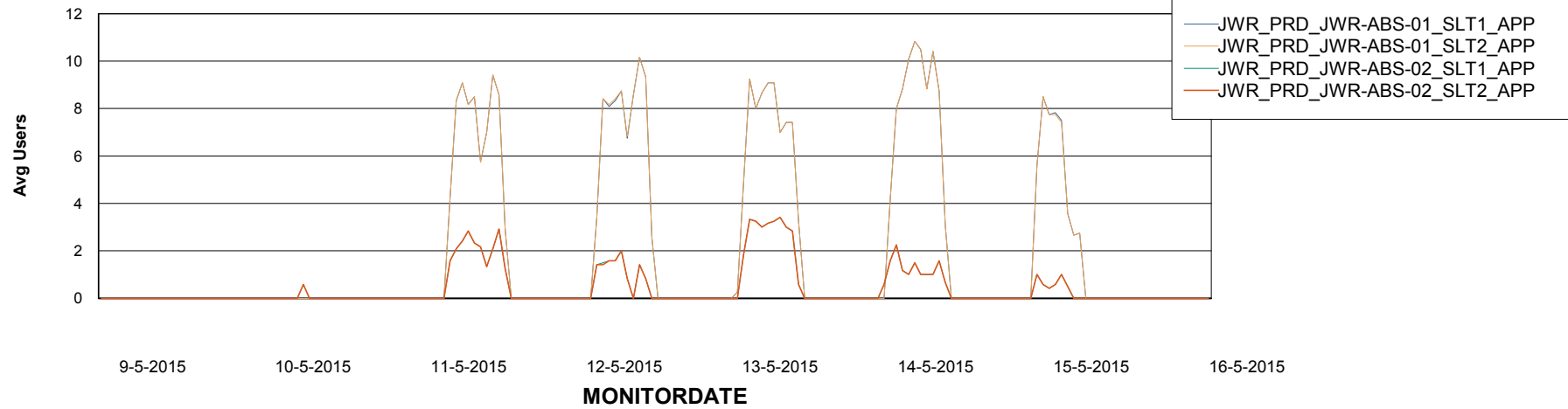
Weekly SLA Customer Report

Customer JWR Production
Database ID 43



=====
ABSolute Application Server Services
=====

Avg users per day per ABS server



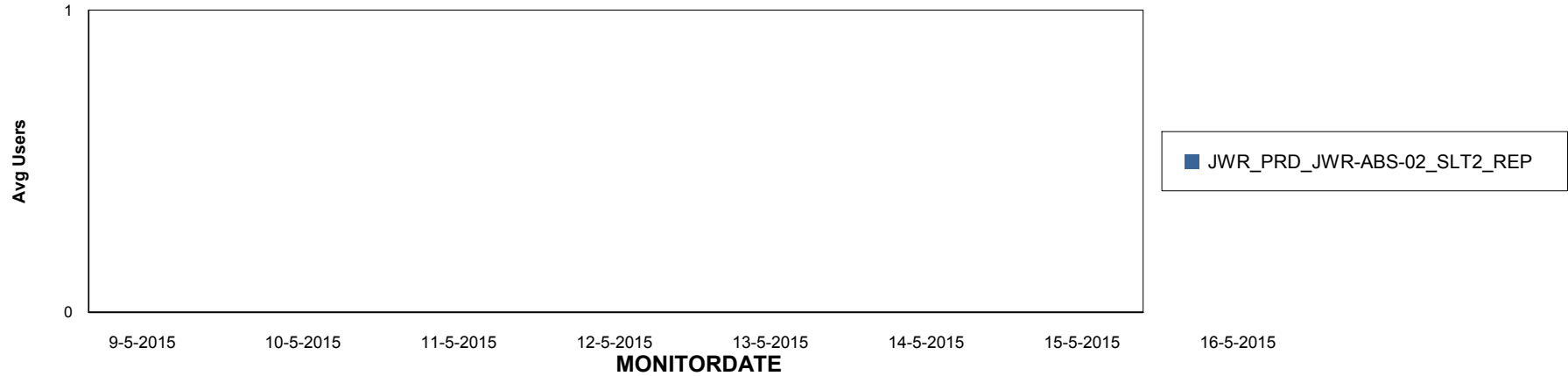
Weekly SLA Customer Report

Customer JWR Production
Database ID 43

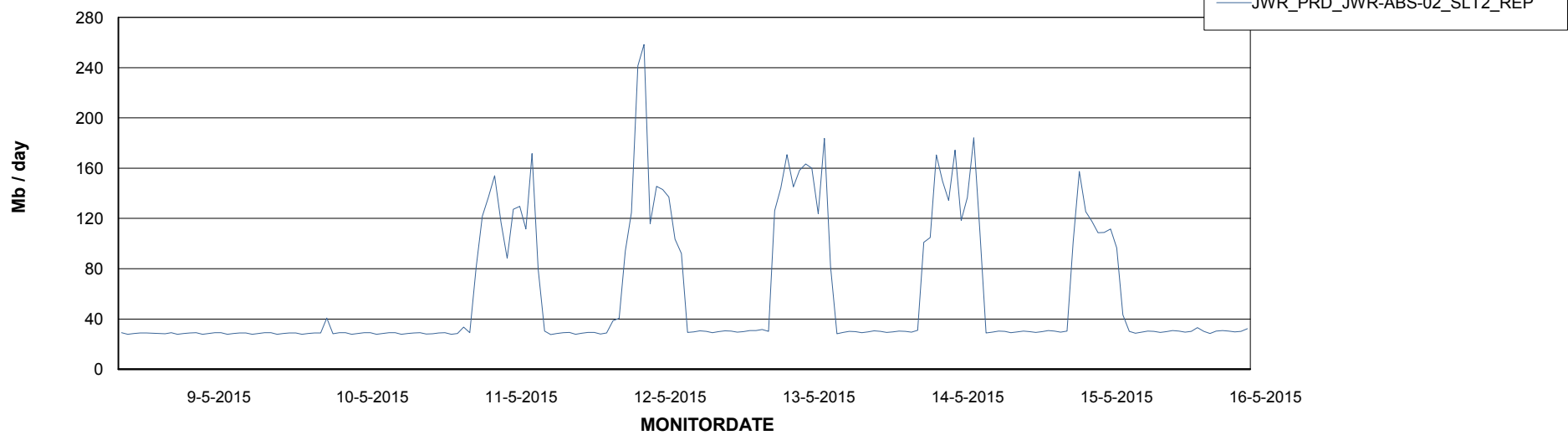


=====
ABSolute Application ReportServer Services
=====

Disaster per ReportServer



Avg memory used per ReportServer Service



Weekly SLA Customer Report

Customer JWR Production
Database ID 43



Disaster per ABS component

