

Weekly SLA Customer Report

Customer AUJ_Production
 Database ID 41



=====
 HARDDISK USAGE AUJ_PRD_ORACLE_BI1
 =====

	Used disk space on \$1 (GB)	Total disk space on \$1 (GB)	Free disk space on \$1 (GB)
16-5-2015	436	526	63
15-5-2015	429	526	70
14-5-2015	429	526	69
13-5-2015	429	526	70
12-5-2015	428	526	70
11-5-2015	428	526	71
10-5-2015	433	526	65

=====
 HARDDISK USAGE AUJ_PRD_ORACLE1
 =====

	Used disk space on \$1 (GB)	Total disk space on \$1 (GB)	Free disk space on \$1 (GB)
16-5-2015	154	290	67
15-5-2015	155	291	67
14-5-2015	155	290	67
13-5-2015	155	290	67
12-5-2015	154	290	67
11-5-2015	154	290	67
10-5-2015	154	290	67

Weekly SLA Customer Report

Customer AUJ_Production
Database ID 41



HARDDISK USAGE AUJ_PRD_ORACLE2

	Used disk space on \$1 (GB)	Total disk space on \$1 (GB)	Free disk space on \$1 (GB)
16-5-2015	65	174	97
15-5-2015	66	174	98
14-5-2015	66	174	98
13-5-2015	65	174	98
12-5-2015	65	174	98
11-5-2015	64	174	98
10-5-2015	64	174	98

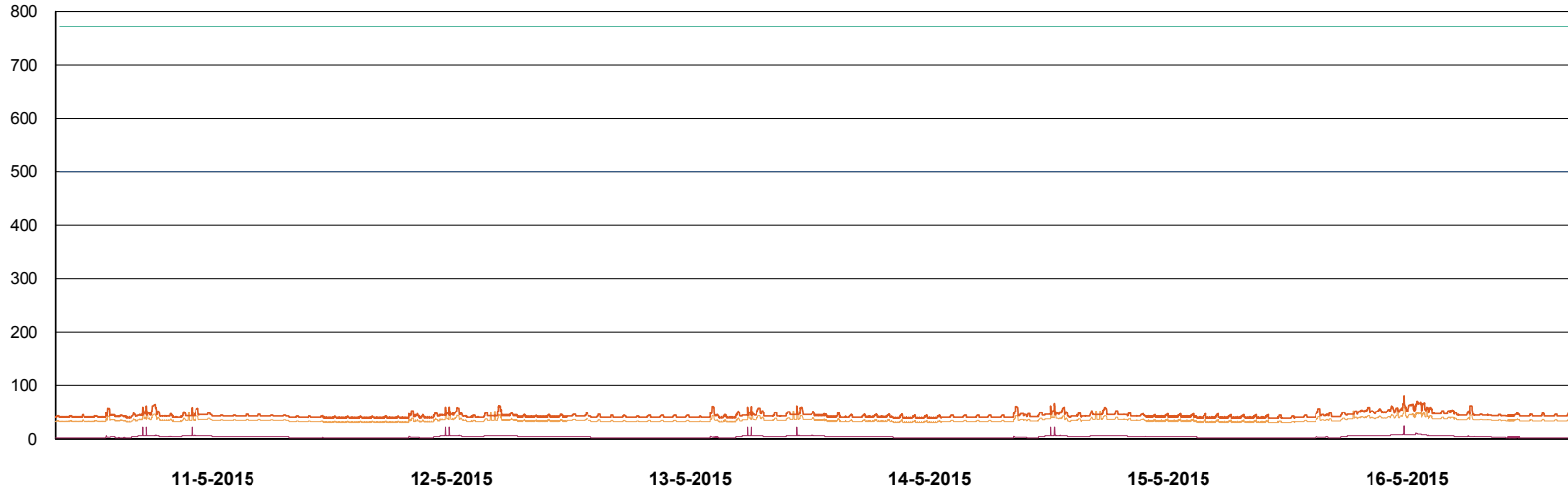
Weekly SLA Customer Report

Customer AUJ_Production
Database ID 41

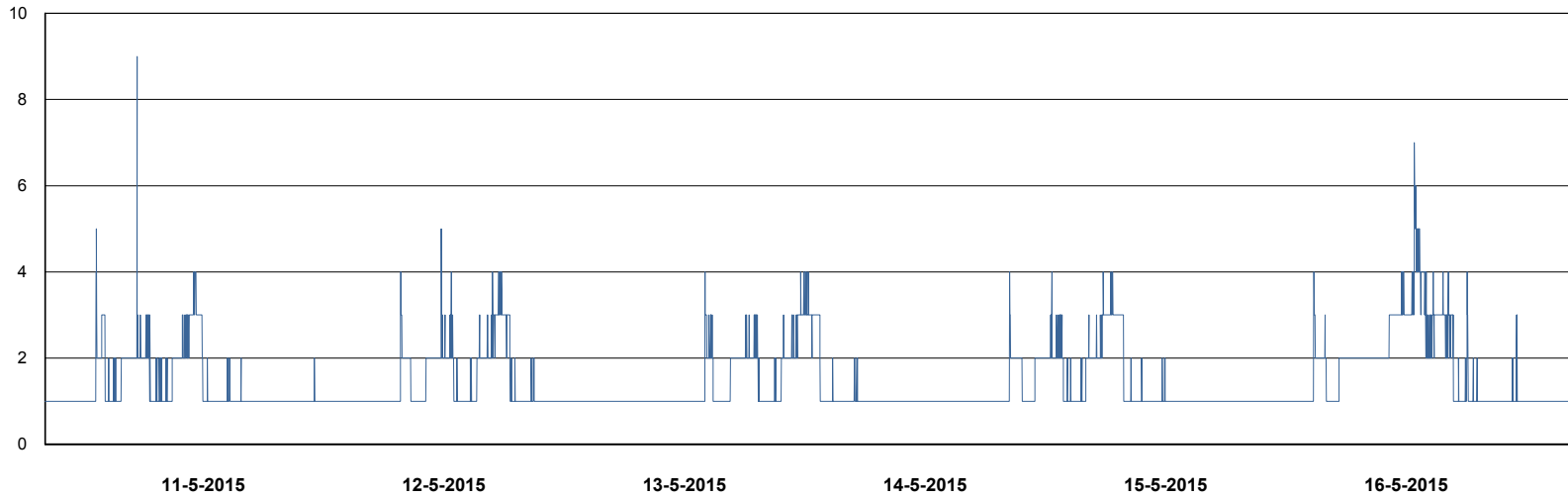


DATABASE PERFORMANCE

AUJDB_BI



- DB Processes Max
- DB Processes Used
- DB Sessions Max
- DB Sessions Used
- Users Connected



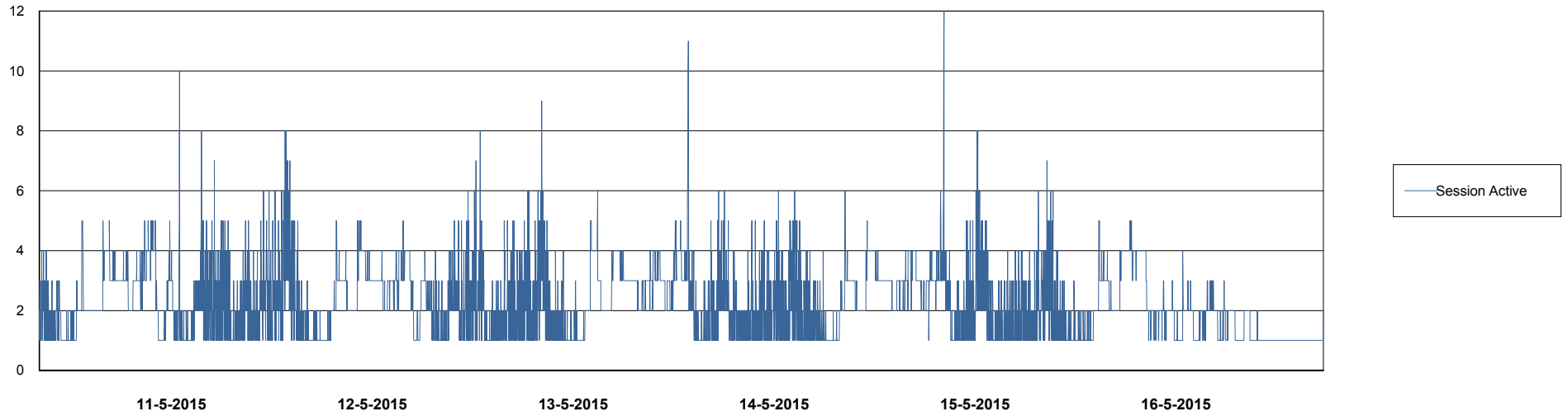
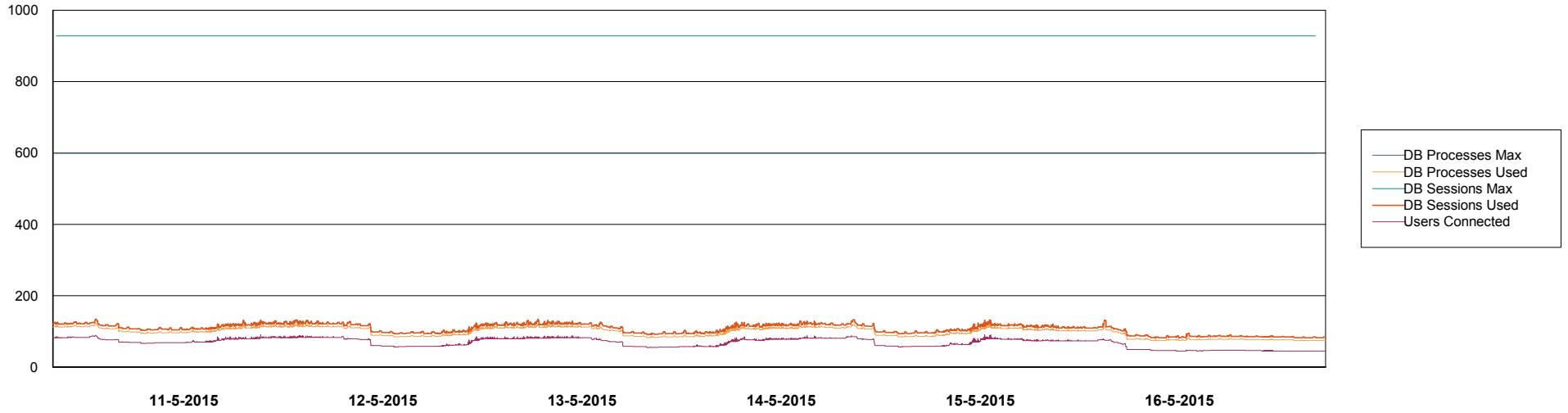
- Session Active

Weekly SLA Customer Report

Customer AUJ_Production
Database ID 41



DATABASE PERFORMANCE AUJDB_Production

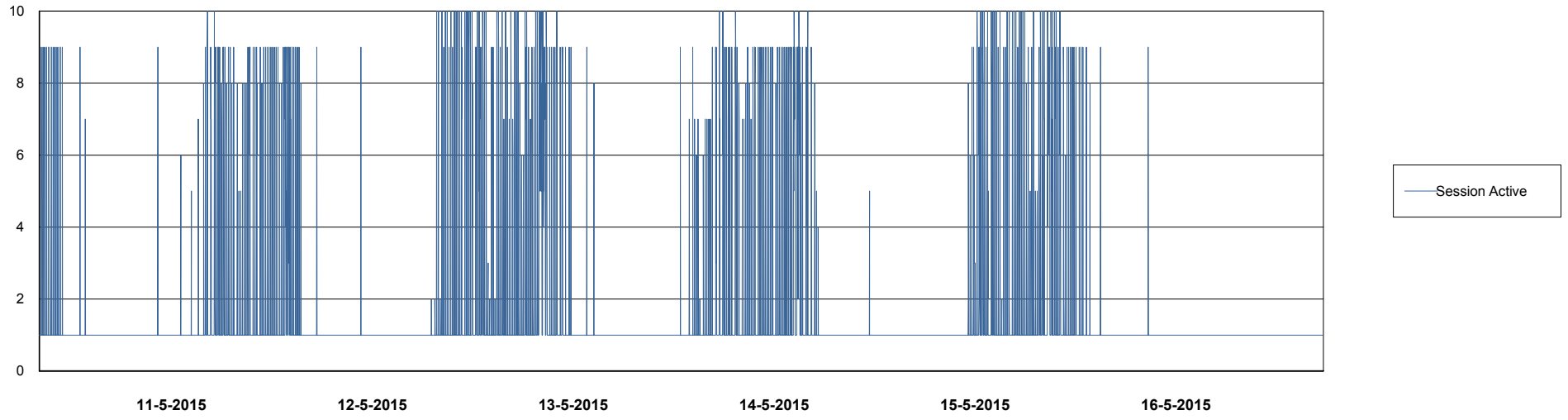
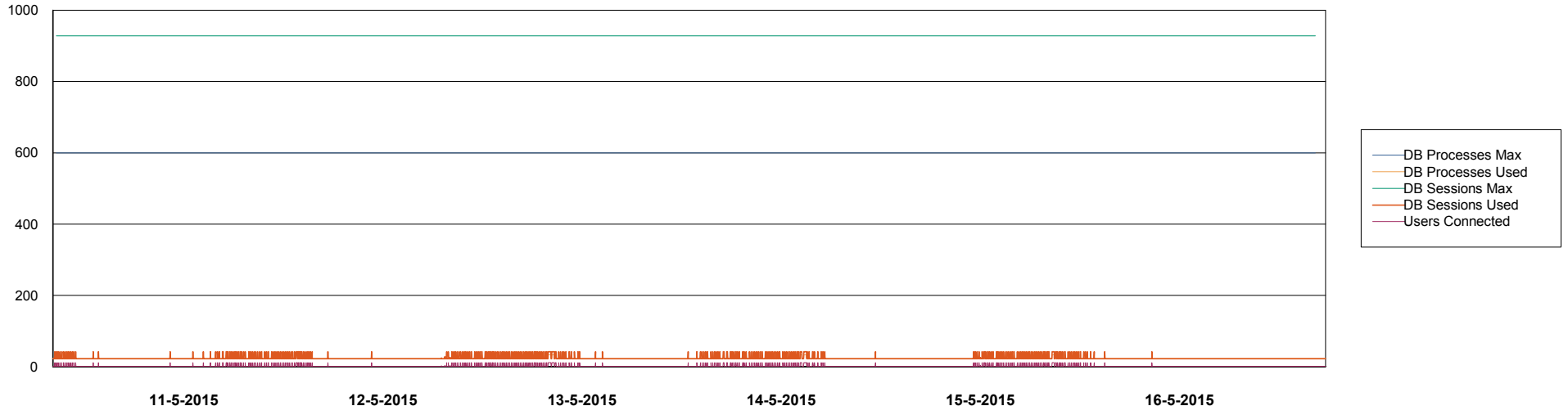


Weekly SLA Customer Report

Customer AUJ_Production
Database ID 41



DATABASE PERFORMANCE AUJDB_Standby

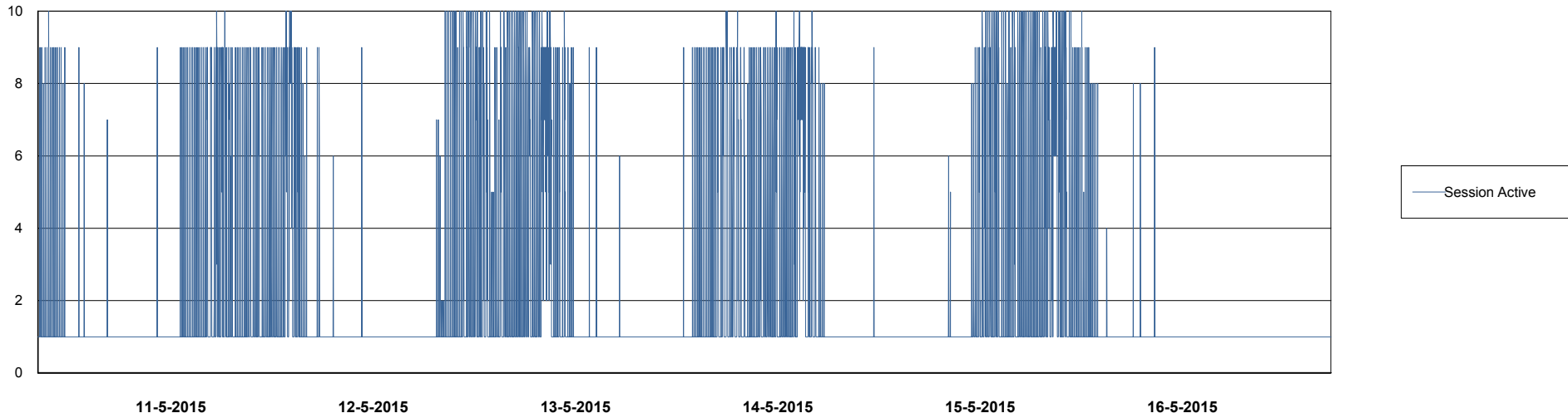
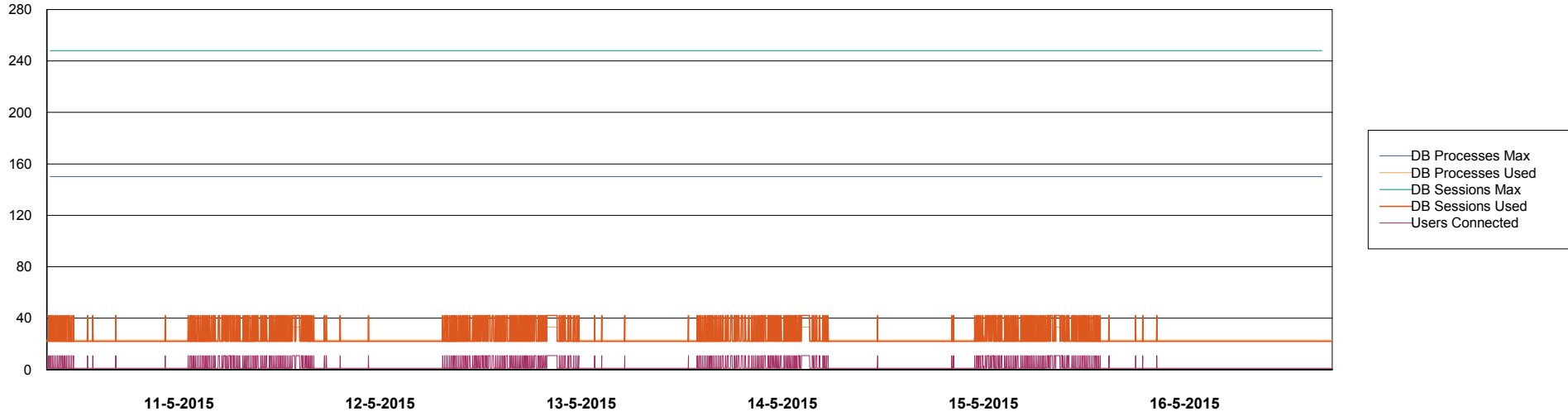


Weekly SLA Customer Report

Customer AUJ_Production
Database ID 41



DATABASE PERFORMANCE AUJDB3_Standby



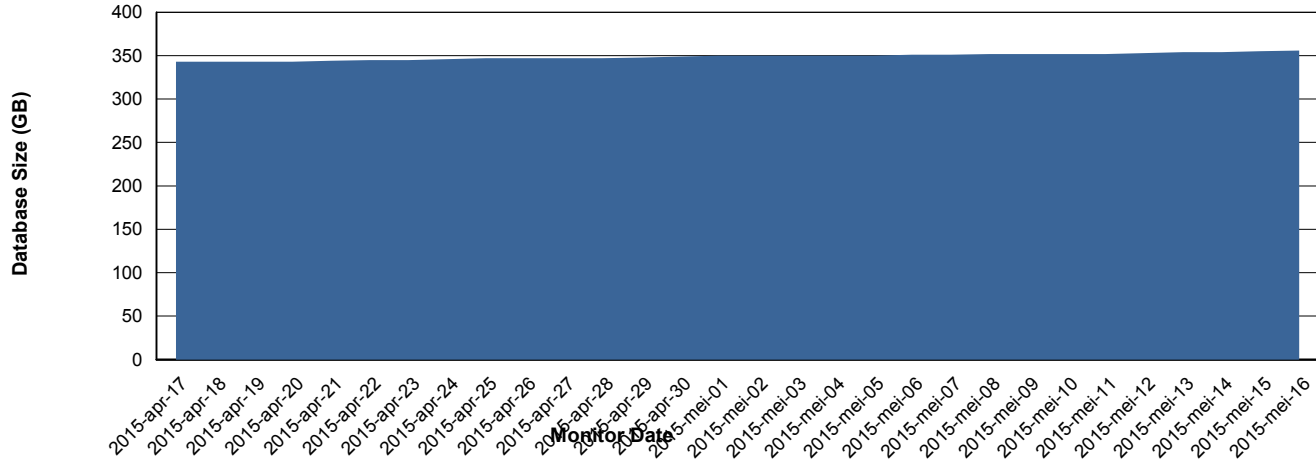
Weekly SLA Customer Report

Customer AUJ_Production
Database ID 41



=====
DATABASE SIZE AUJDB_Production
=====

Database growth over last month



Weekly SLA Customer Report

Customer AUJ_Production
Database ID 41



=====
DATABASE TABLESPACES AUJDB_BI
=====

TOTAL DATABASE SIZE PER TABLESPACE

Date	Tablespace Name	Filesize (Gb)	Usedsize (Gb)	Percentage free
16-5-2015	ABSDATA	112	87	22
	INDX	187	152	19
15-5-2015	ABSDATA	112	87	22
	INDX	187	152	19
14-5-2015	ABSDATA	112	87	22
	INDX	187	152	19
13-5-2015	ABSDATA	112	87	22
	INDX	187	152	19
12-5-2015	ABSDATA	112	87	22
	INDX	187	152	19
11-5-2015	ABSDATA	112	86	23
	INDX	187	152	19
10-5-2015	ABSDATA	112	86	23
	INDX	187	152	19

Weekly SLA Customer Report

Customer AUJ_Production
 Database ID 41



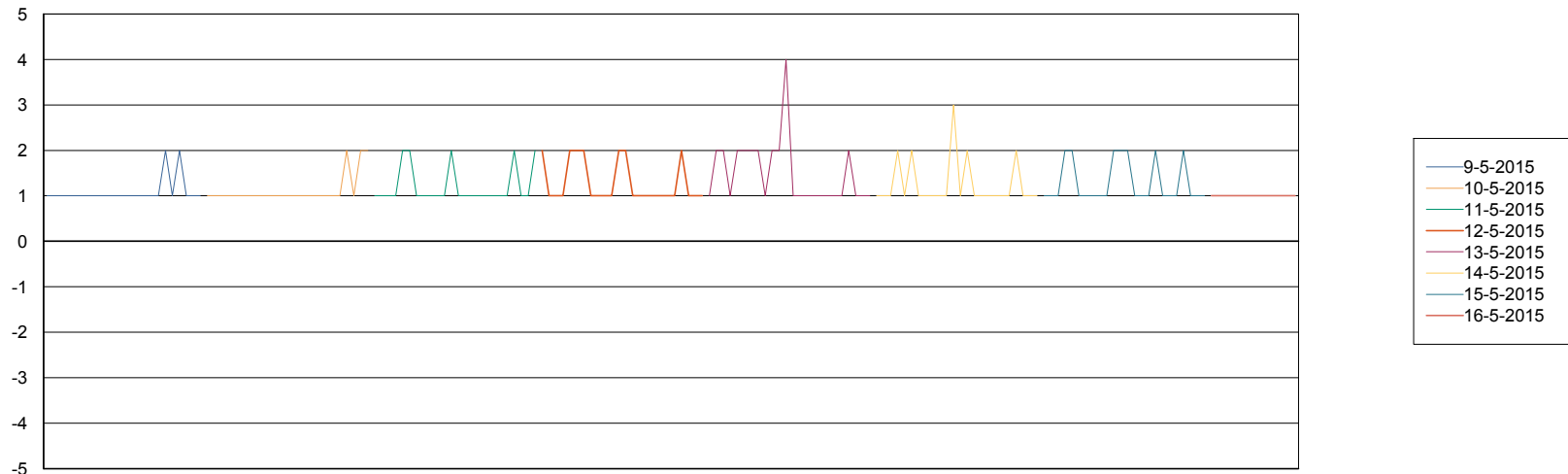
=====
 DATABASE TABLESPACES AUJDB_Production
 =====

TOTAL DATABASE SIZE PER TABLESPACE

Date	Tablespace Name	Filesize (Gb)	Usedsize (Gb)	Percentage free
16-5-2015	ABSDATA	176	150	15
	INDX	241	203	16
15-5-2015	ABSDATA	176	150	15
	INDX	241	203	16
14-5-2015	ABSDATA	176	150	15
	INDX	241	203	16
13-5-2015	ABSDATA	176	150	15
	INDX	241	202	16
12-5-2015	ABSDATA	176	149	15
	INDX	241	202	16
11-5-2015	ABSDATA	176	149	15
	INDX	241	201	17
10-5-2015	ABSDATA	176	149	15
	INDX	241	201	17

=====
 STANDBY DATABASE HEALTH AUJ_Production
 =====

Recovery lag for last 7 days



Weekly SLA Customer Report

Customer AUJ_Production
Database ID 41

