

Weekly SLA Customer Report

Customer NIX_Production
Database ID 51



=====
HARDDISK USAGE NIX_PRD_ABSAPP1
=====

	Total disk space on C (GB)	Free disk space on C (GB)
9-5-2015	136	84
8-5-2015	136	84
7-5-2015	136	84
6-5-2015	136	84
5-5-2015	136	84
4-5-2015	136	84
3-5-2015	136	84

=====
HARDDISK USAGE NIX_PRD_ABSAPP2
=====

	Total disk space on C (GB)	Free disk space on C (GB)
9-5-2015	200	179
8-5-2015	200	179
7-5-2015	200	179
6-5-2015	200	179
5-5-2015	200	179
4-5-2015	200	179
3-5-2015	200	179

Weekly SLA Customer Report

Customer NIX_Production
 Database ID 51



=====
 HARDDISK USAGE NIX_PRD_ABSAPP3
 =====

	Total disk space on C (GB)	Free disk space on C (GB)
9-5-2015	200	182
8-5-2015	200	182
7-5-2015	200	182
6-5-2015	200	182
5-5-2015	200	182
4-5-2015	200	182
3-5-2015	200	182

=====
 HARDDISK USAGE NIX_PRD_ABSWEB1
 =====

	Total disk space on C (GB)	Free disk space on C (GB)	Total disk space on D (GB)
9-5-2015	930	721	3
8-5-2015	930	721	3
7-5-2015	930	721	3
6-5-2015	930	721	3
5-5-2015	930	721	3
4-5-2015	930	721	3
3-5-2015	930	721	3

Weekly SLA Customer Report

Customer NIX_Production
 Database ID 51



=====

HARDDISK USAGE NIX_PRD_ORACLE_BI01

=====

	Total disk space on C (GB)	Free disk space on C (GB)	Total disk space on E (GB)	Free disk space on E (GB)	Total disk space on F (GB)	Free disk space on F (GB)	Total disk space on G (GB)	Free disk space on G (GB)
9-5-2015	279	201	558	489	558	458	279	240
8-5-2015	279	201	558	489	558	458	279	240
7-5-2015	279	201	558	489	558	458	279	240
6-5-2015	279	201	558	489	558	458	279	241
5-5-2015	279	201	558	489	558	458	279	241
4-5-2015	279	201	558	489	558	458	279	241
3-5-2015	279	201	558	489	558	458	279	241

=====

HARDDISK USAGE NIX_PRD_ORACLE_BI1

=====

	Total disk space on C (GB)	Free disk space on C (GB)	Total disk space on D (GB)	Free disk space on D (GB)	Total disk space on E (GB)	Free disk space on E (GB)
9-5-2015	139	88	279	169	99	32
8-5-2015	139	88	279	169	99	32
7-5-2015	139	88	279	169	99	32
6-5-2015	139	88	279	169	99	32
5-5-2015	139	88	279	169	99	32
4-5-2015	139	88	279	169	99	32
3-5-2015	139	88	279	169	99	32

Weekly SLA Customer Report

Customer NIX_Production
 Database ID 51



=====
 HARDDISK USAGE NIX_PRD_ORCDB1
 =====

	Total disk space on C (GB)	Free disk space on C (GB)	Total disk space on D (GB)	Free disk space on D (GB)	Total disk space on E (GB)	Free disk space on E (GB)
9-5-2015	136	67	136	27	136	46
8-5-2015	136	66	136	27	136	49
7-5-2015	136	66	136	27	136	49
6-5-2015	136	66	136	27	136	48
5-5-2015	136	67	136	27	136	49
4-5-2015	136	67	136	27	136	49
3-5-2015	136	67	136	27	136	49

=====
 HARDDISK USAGE NIX_PRD_ORCDB2
 =====

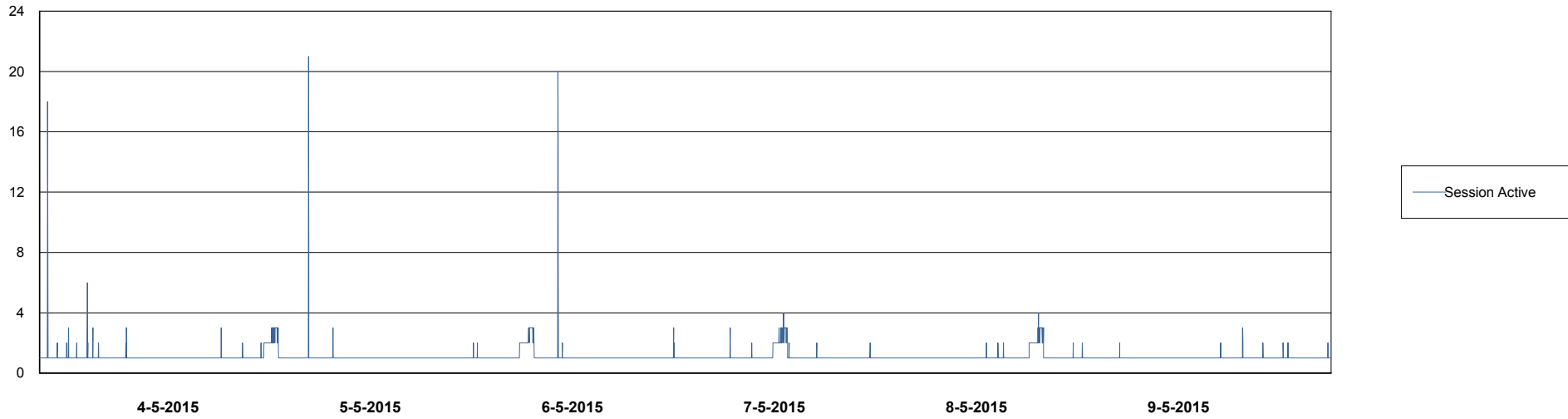
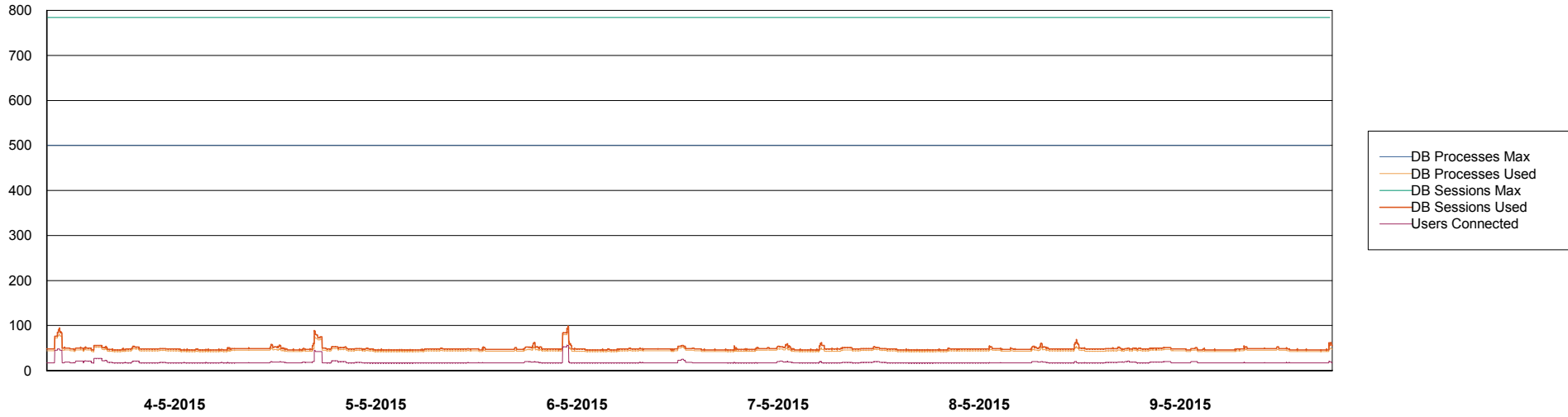
	Total disk space on C (GB)	Free disk space on C (GB)	Total disk space on D (GB)	Free disk space on D (GB)	Total disk space on E (GB)	Free disk space on E (GB)
9-5-2015	279	60	279	43	279	149
8-5-2015	279	60	279	43	279	146
7-5-2015	279	60	279	43	279	148
6-5-2015	279	60	279	43	279	145
5-5-2015	279	60	279	43	279	145
4-5-2015	279	60	279	43	279	146
3-5-2015	279	61	279	43	279	147

Weekly SLA Customer Report

Customer NIX_Production
Database ID 51



DATABASE PERFORMANCE NIXDB_BI



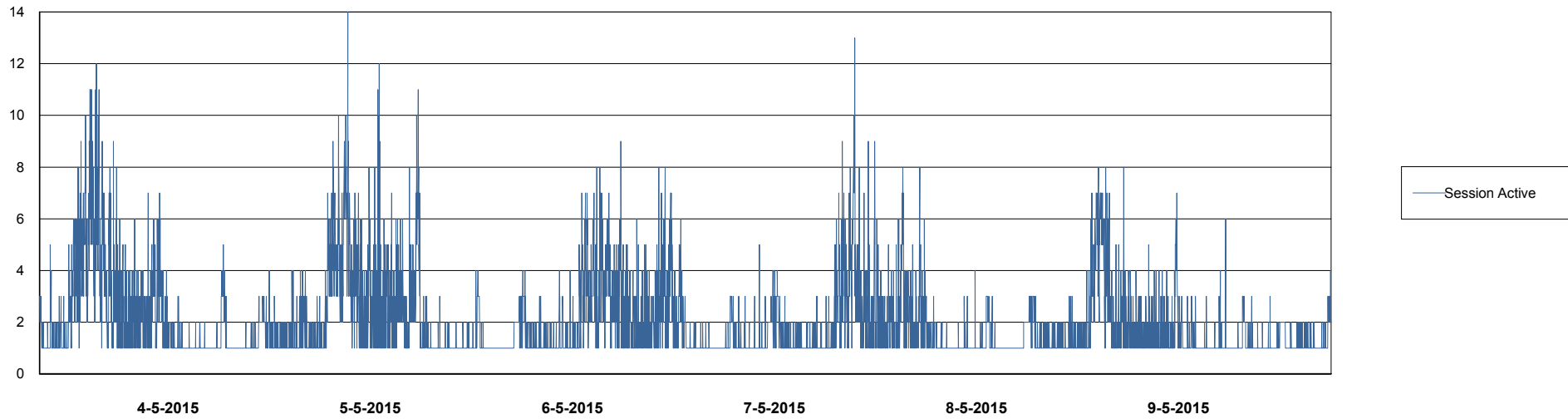
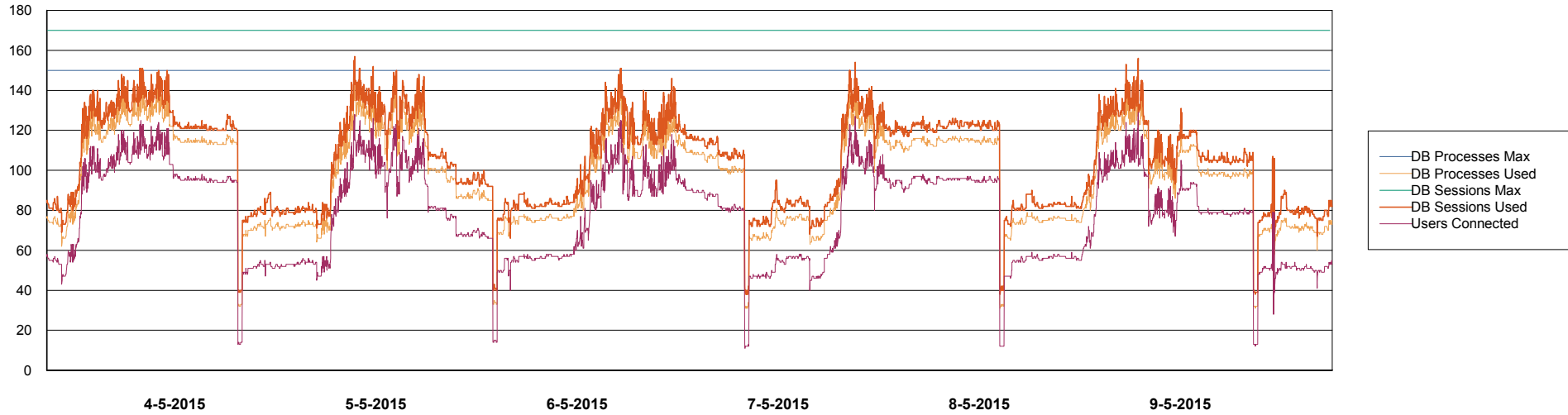
Weekly SLA Customer Report

Customer NIX_Production
Database ID 51



DATABASE PERFORMANCE

NIXDB_Production

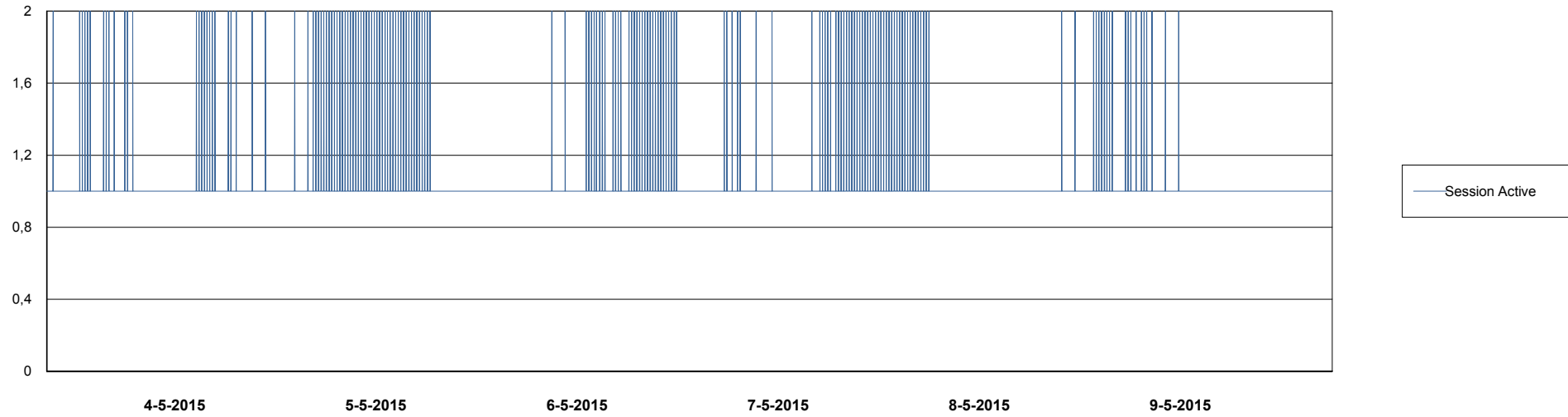
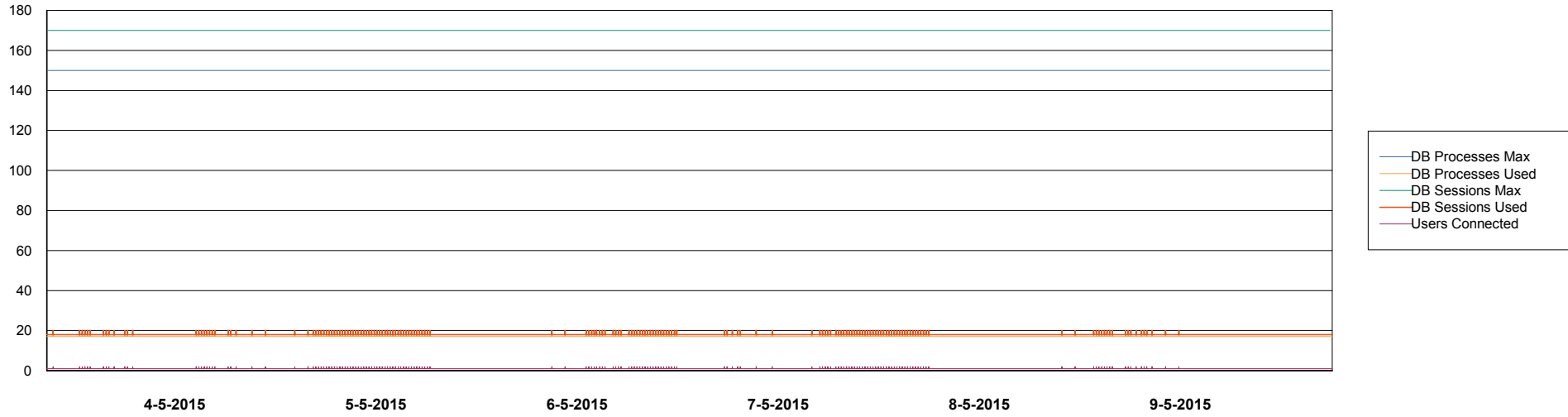


Weekly SLA Customer Report

Customer NIX_Production
Database ID 51



DATABASE PERFORMANCE NIXDB_Standby



Weekly SLA Customer Report

Customer NIX_Production
Database ID 51



=====
DATABASE TABLESPACES NIXDB_BI
=====
TOTAL DATABASE SIZE PER TABLESPACE

Date	Tablespace Name	Filesize (Gb)	Usedsize (Gb)	Percentage free
9-5-2015	ABSDATA	28	21	25
	INDX	44	33	25
8-5-2015	ABSDATA	28	21	25
	INDX	44	33	25
7-5-2015	ABSDATA	28	21	25
	INDX	44	33	25
6-5-2015	ABSDATA	28	21	25
	INDX	44	33	25
5-5-2015	ABSDATA	28	21	25
	INDX	44	33	25
4-5-2015	ABSDATA	28	21	25
	INDX	44	33	25
3-5-2015	ABSDATA	28	21	25
	INDX	44	33	25

Weekly SLA Customer Report

Customer NIX_Production
 Database ID 51



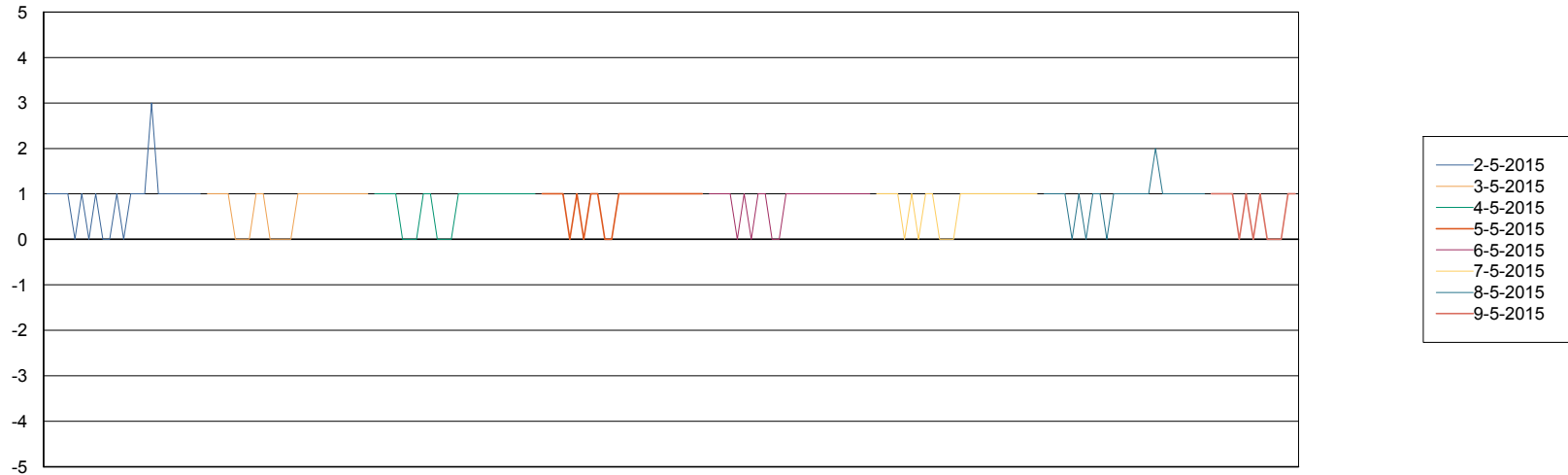
=====
 DATABASE TABLESPACES NIXDB_Production
 =====

TOTAL DATABASE SIZE PER TABLESPACE

Date	Tablespace Name	Filesize (Gb)	Usedsize (Gb)	Percentage free
9-5-2015	ABSDATA	40	32	20
	INDX	109	92	16
8-5-2015	ABSDATA	40	32	20
	INDX	109	92	16
7-5-2015	ABSDATA	40	32	20
	INDX	109	91	17
6-5-2015	ABSDATA	40	32	20
	INDX	109	91	17
5-5-2015	ABSDATA	40	32	20
	INDX	109	91	17
4-5-2015	ABSDATA	40	32	20
	INDX	109	91	17
3-5-2015	ABSDATA	40	32	20
	INDX	109	91	17

=====
 STANDBY DATABASE HEALTH NIX_Production
 =====

Recovery lag for last 7 days



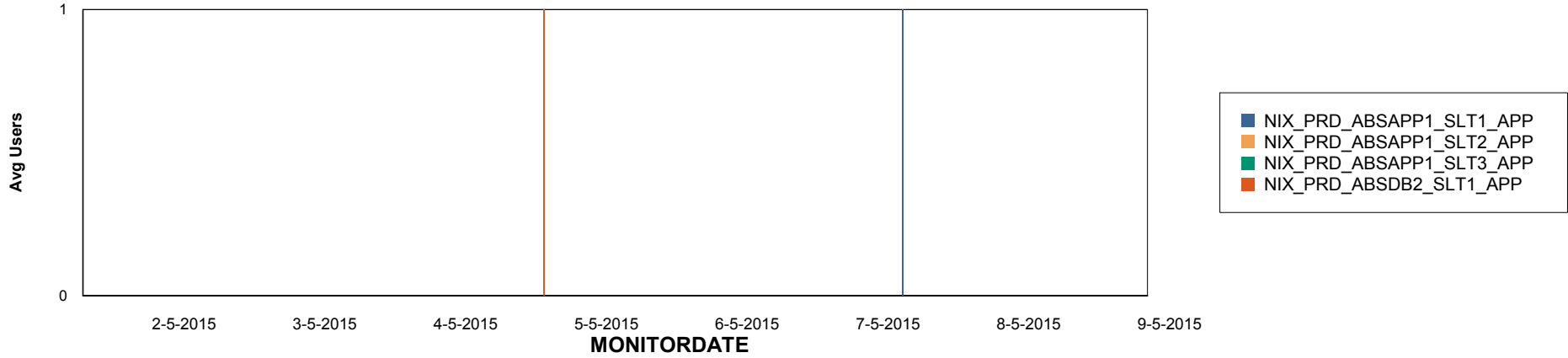
Weekly SLA Customer Report

Customer NIX_Production
Database ID 51

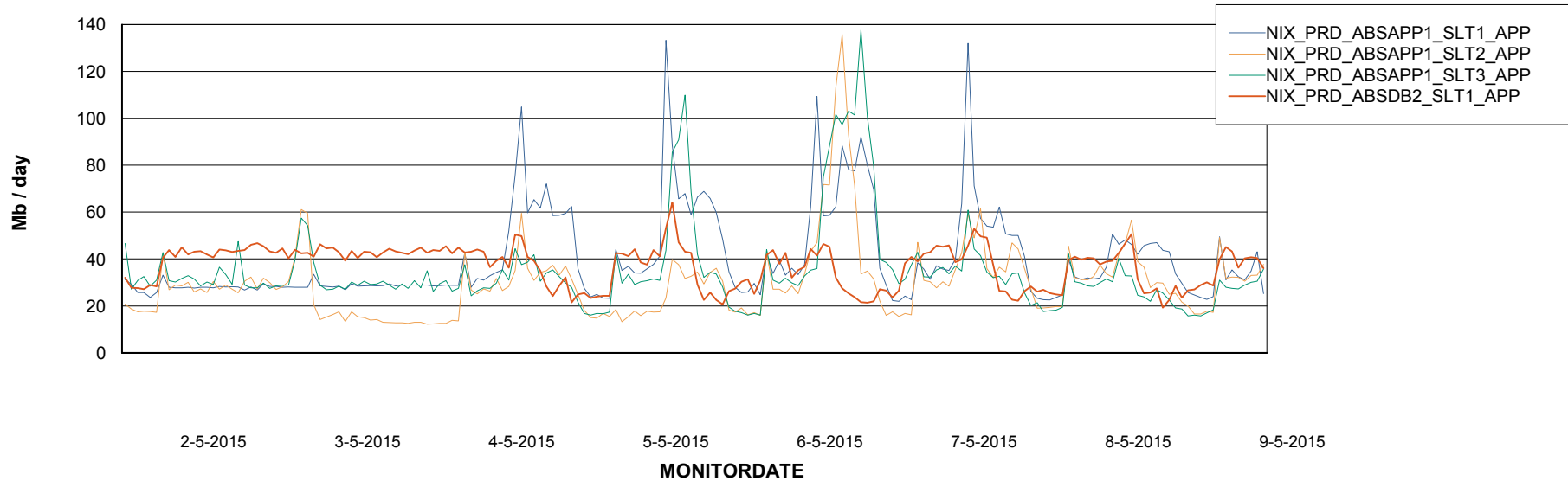


ABSolute Application Server Services

Disaster per ABS Server



Avg memory used per ABS Server Service



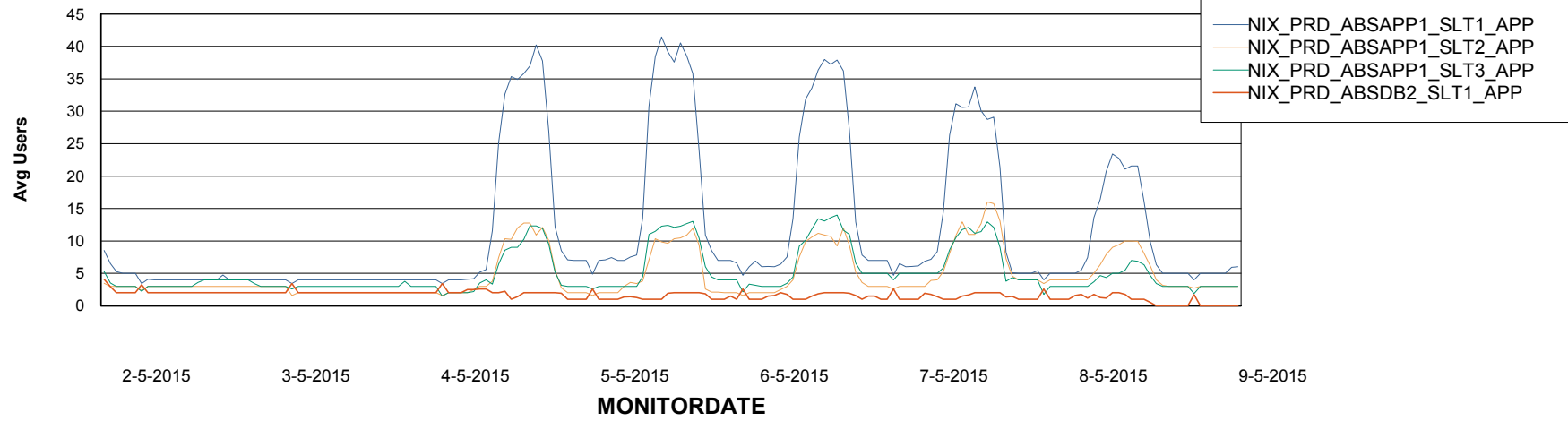
Weekly SLA Customer Report

Customer NIX_Production
Database ID 51



ABSSolute Application Server Services

Avg users per day per ABS server



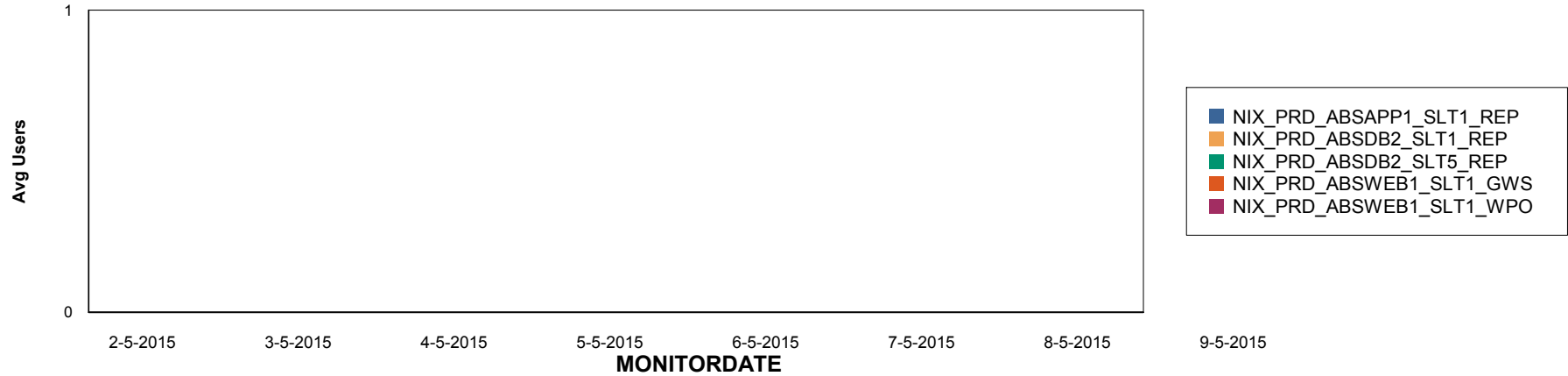
Weekly SLA Customer Report

Customer NIX_Production
Database ID 51

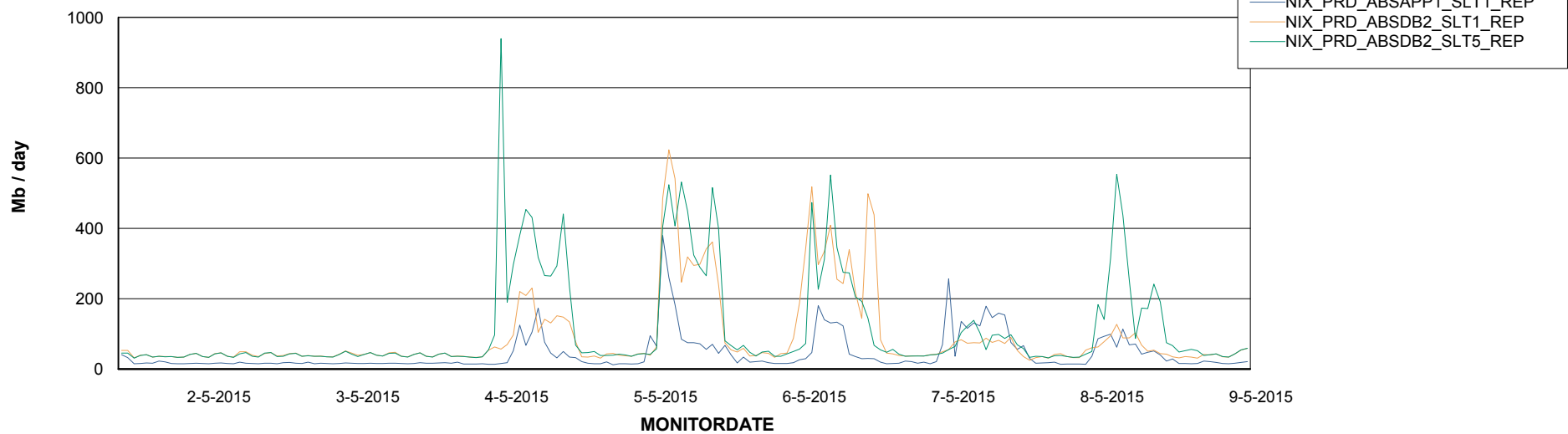


=====
ABSolute Application ReportServer Services
=====

Disaster per ReportServer



Avg memory used per ReportServer Service



Weekly SLA Customer Report

Customer NIX_Production
Database ID 51



Disaster per ABS component

