

Weekly SLA Customer Report

Customer LLG_Production
 Database ID 53



=====
 HARDDISK USAGE LLG_PRD_BI01
 =====

	Total disk space on C (GB)	Free disk space on C (GB)
9-5-2015	559	377
8-5-2015	559	377
7-5-2015	559	377
6-5-2015	559	377
5-5-2015	559	378
4-5-2015	559	378
3-5-2015	559	378

=====
 HARDDISK USAGE LLG_PRD_OR01
 =====

	Total disk space on C (GB)	Free disk space on C (GB)	Total disk space on D (GB)	Free disk space on D (GB)
9-5-2015	279	176	600	224
8-5-2015	279	176	600	226
7-5-2015	279	176	600	227
6-5-2015	279	176	600	228
5-5-2015	279	176	600	145
4-5-2015	279	176	600	97
3-5-2015	279	176	600	93

Weekly SLA Customer Report

Customer LLG_Production
Database ID 53



=====
HARDDISK USAGE LLG_PRD_OR2
=====

	Total disk space on C (GB)	Free disk space on C (GB)	Total disk space on D (GB)	Free disk space on D (GB)
9-5-2015	293	247	545	190
8-5-2015	293	247	545	191
7-5-2015	293	247	545	193
6-5-2015	293	247	545	194
5-5-2015	293	247	545	119
4-5-2015	293	247	545	84
3-5-2015	293	247	545	83

=====
HARDDISK USAGE LLG_PRD_vABS01
=====

	Total disk space on C (GB)	Free disk space on C (GB)	Total disk space on D (GB)	Free disk space on D (GB)
9-5-2015	150	62	150	143
8-5-2015	150	62	150	143
7-5-2015	150	62	150	143
6-5-2015	150	63	150	143
5-5-2015	150	63	150	143
4-5-2015	150	63	150	143
3-5-2015	150	63	150	143

Weekly SLA Customer Report

Customer LLG_Production
Database ID 53



=====
HARDDISK USAGE LLG_PRD_vABS02
=====

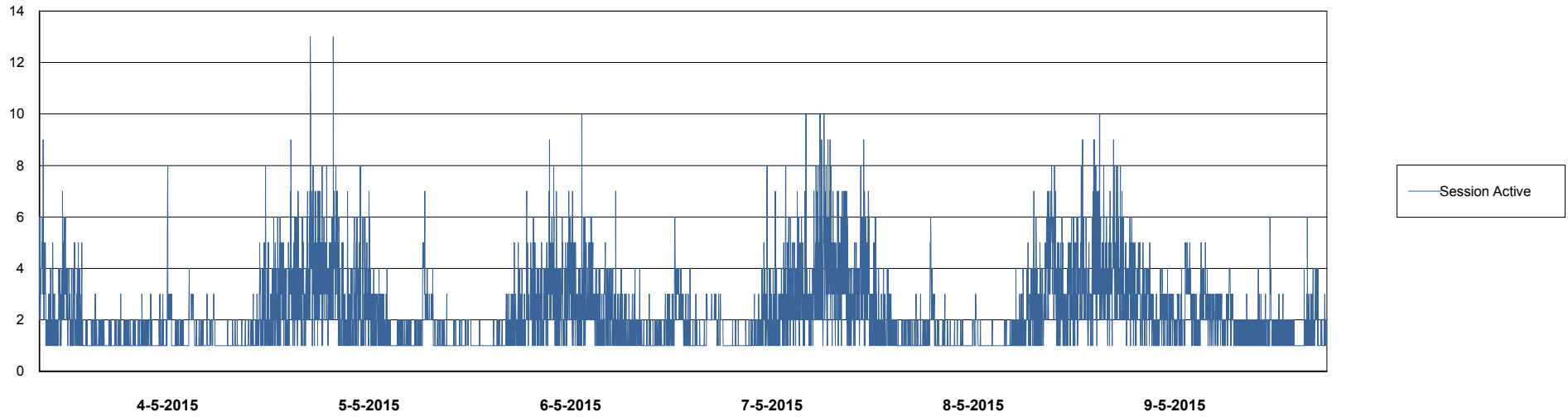
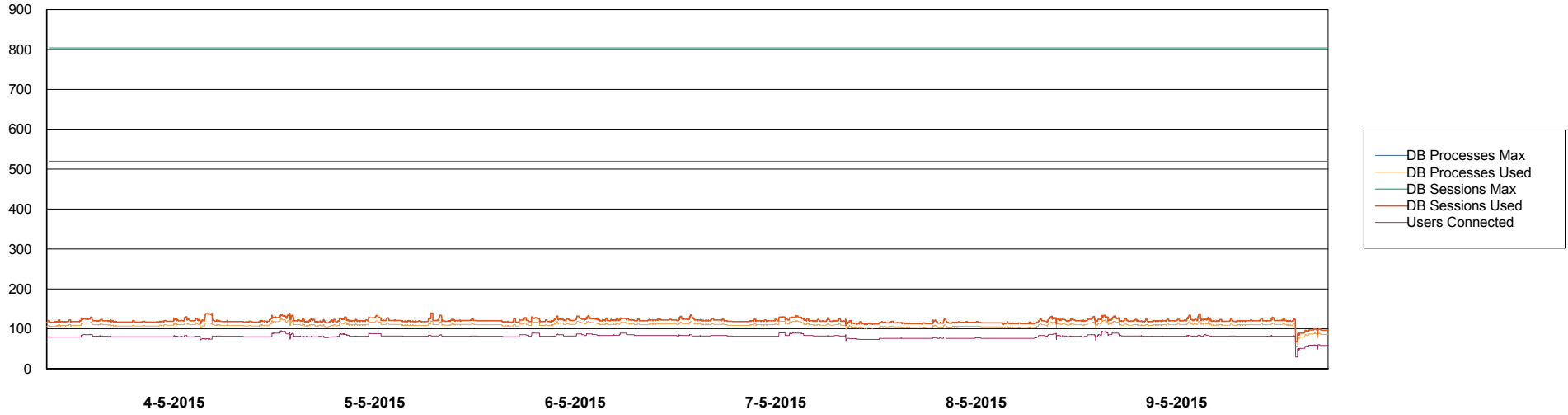
	Total disk space on C (GB)	Free disk space on C (GB)	Total disk space on D (GB)	Free disk space on D (GB)
9-5-2015	150	68	150	124
8-5-2015	150	68	150	124
7-5-2015	150	68	150	124
6-5-2015	150	68	150	124
5-5-2015	150	68	150	124
4-5-2015	150	68	150	124
3-5-2015	150	68	150	124

Weekly SLA Customer Report

Customer LLG_Production
Database ID 53



DATABASE PERFORMANCE LLGDB_Production

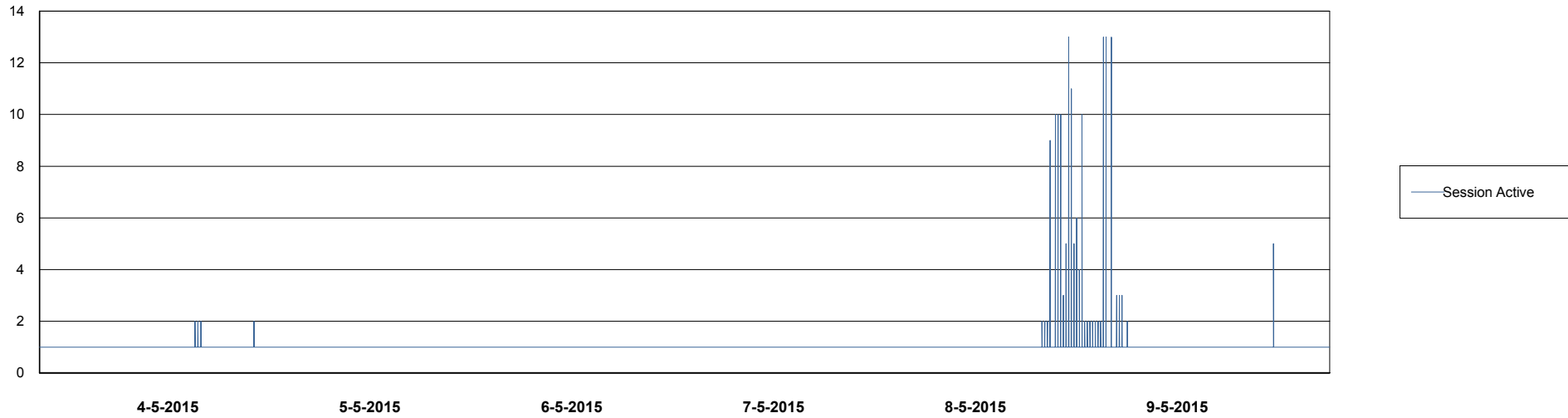
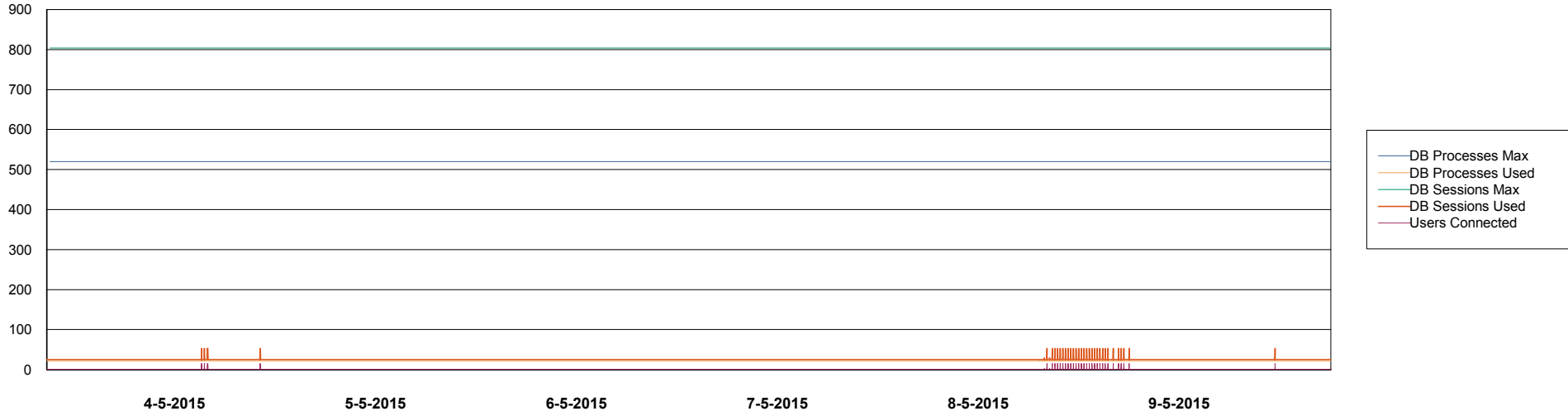


Weekly SLA Customer Report

Customer LLG_Production
Database ID 53



DATABASE PERFORMANCE LLGDB_Standby



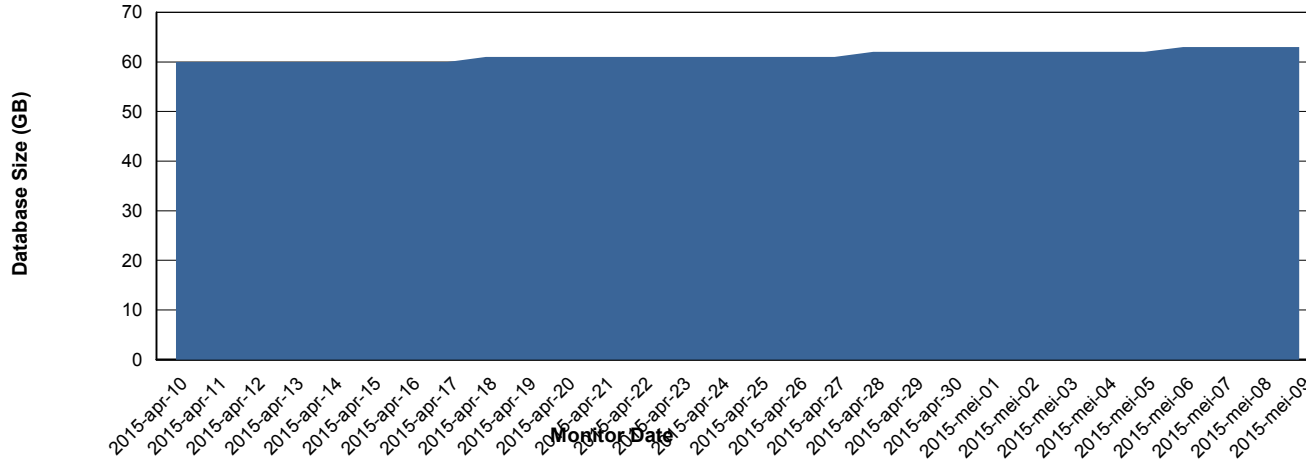
Weekly SLA Customer Report

Customer LLG_Production
 Database ID 53



=====
 DATABASE SIZE LLGDB_Production
 =====

Database growth over last month



=====
 DATABASE TABLESPACES LLGDB_Production
 =====

TOTAL DATABASE SIZE PER TABLESPACE

Date	Tablespace Name	Filesize (Gb)	Usedsize (Gb)	Percentage free
9-5-2015	ABSDATA	28	22	21
	INDX	50	38	24
8-5-2015	ABSDATA	28	22	21
	INDX	50	38	24
7-5-2015	ABSDATA	28	22	21
	INDX	50	38	24
6-5-2015	ABSDATA	28	22	21
	INDX	50	38	24
5-5-2015	ABSDATA	28	22	21
	INDX	50	38	24
4-5-2015	ABSDATA	28	22	21
	INDX	50	38	24
3-5-2015	ABSDATA	28	22	21
	INDX	44	38	14

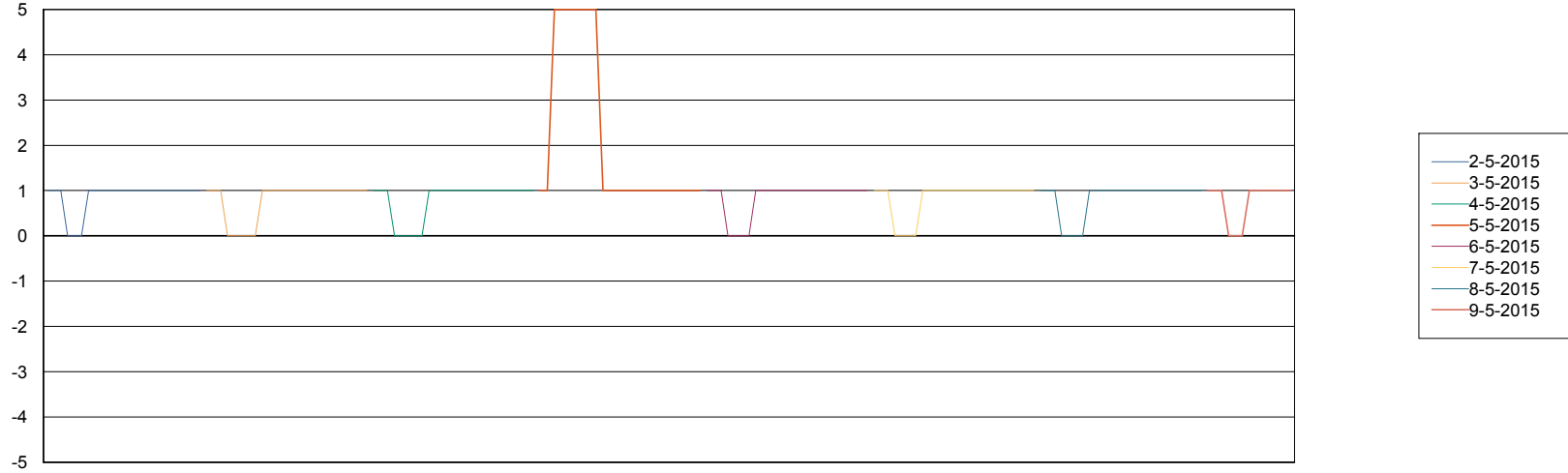
Weekly SLA Customer Report

Customer LLG_Production
Database ID 53



=====
STANDBY DATABASE HEALTH LLG_Production
=====

Recovery lag for last 7 days



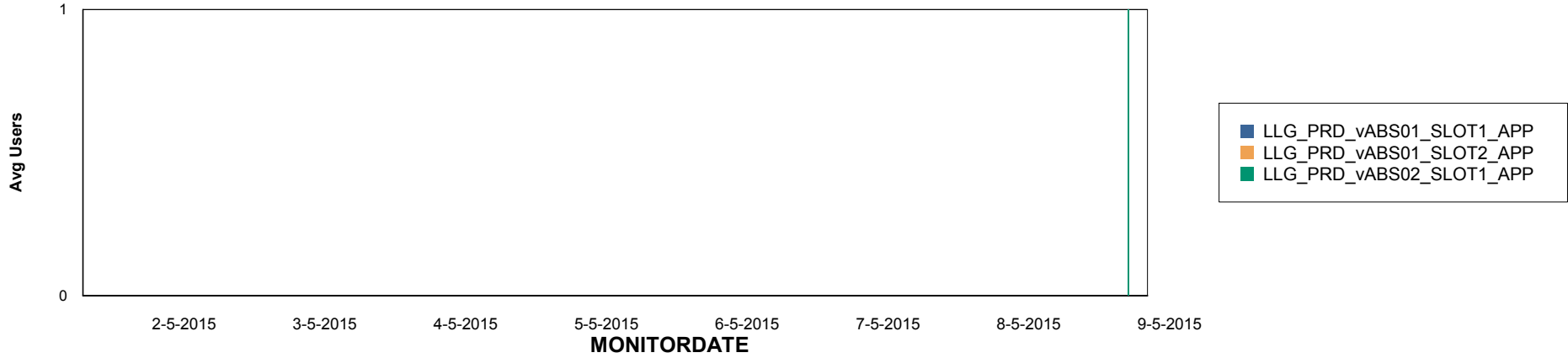
Weekly SLA Customer Report

Customer LLG_Production
Database ID 53

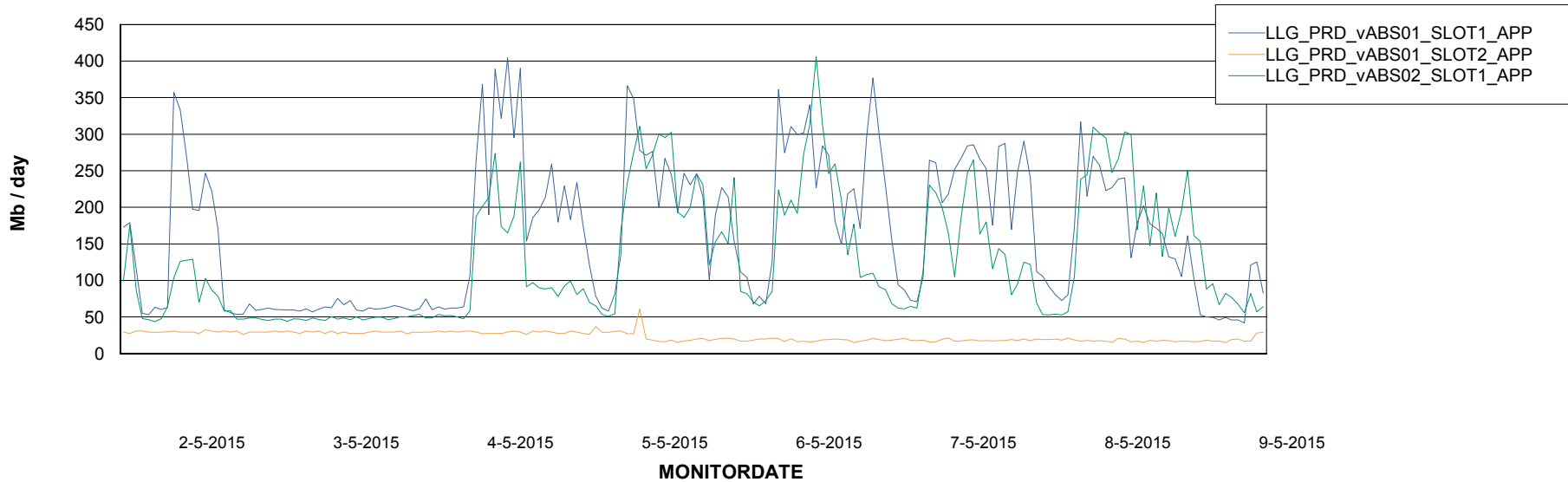


=====
ABSolute Application Server Services
=====

Disaster per ABS Server



Avg memory used per ABS Server Service



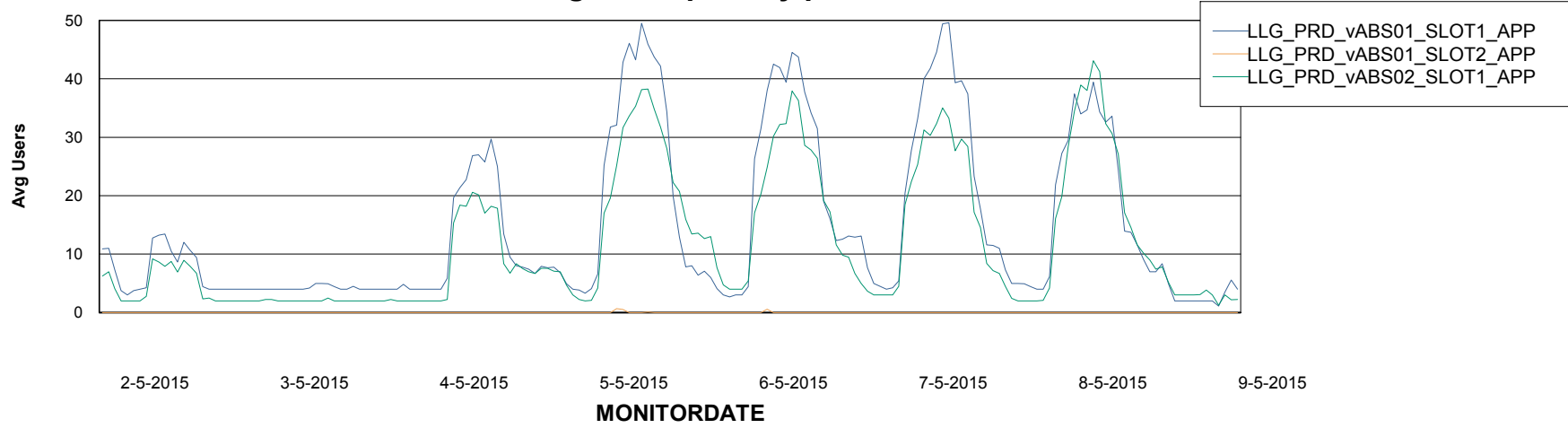
Weekly SLA Customer Report

Customer LLG_Production
Database ID 53



=====
ABSolute Application Server Services
=====

Avg users per day per ABS server



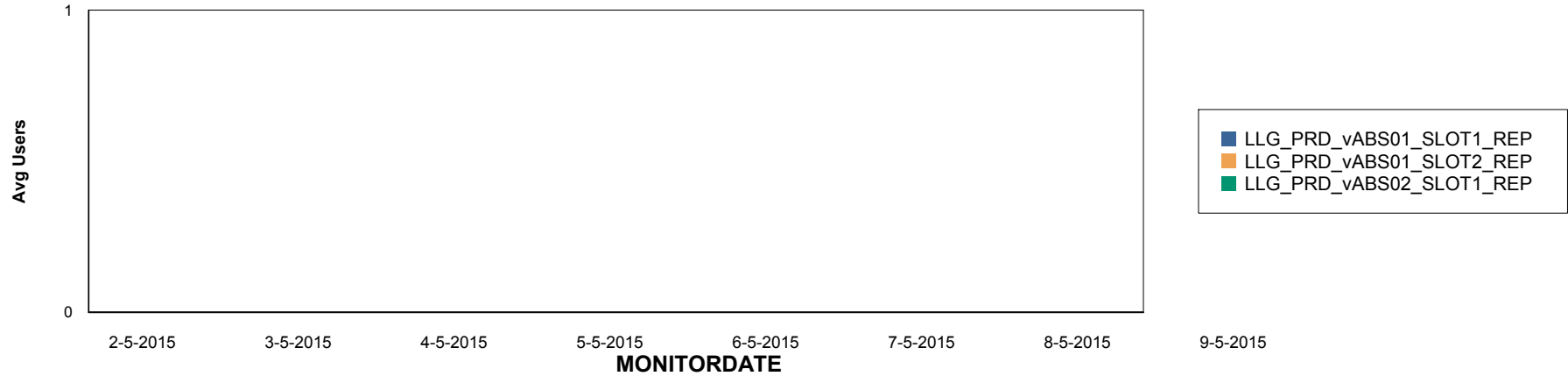
Weekly SLA Customer Report

Customer LLG_Production
Database ID 53

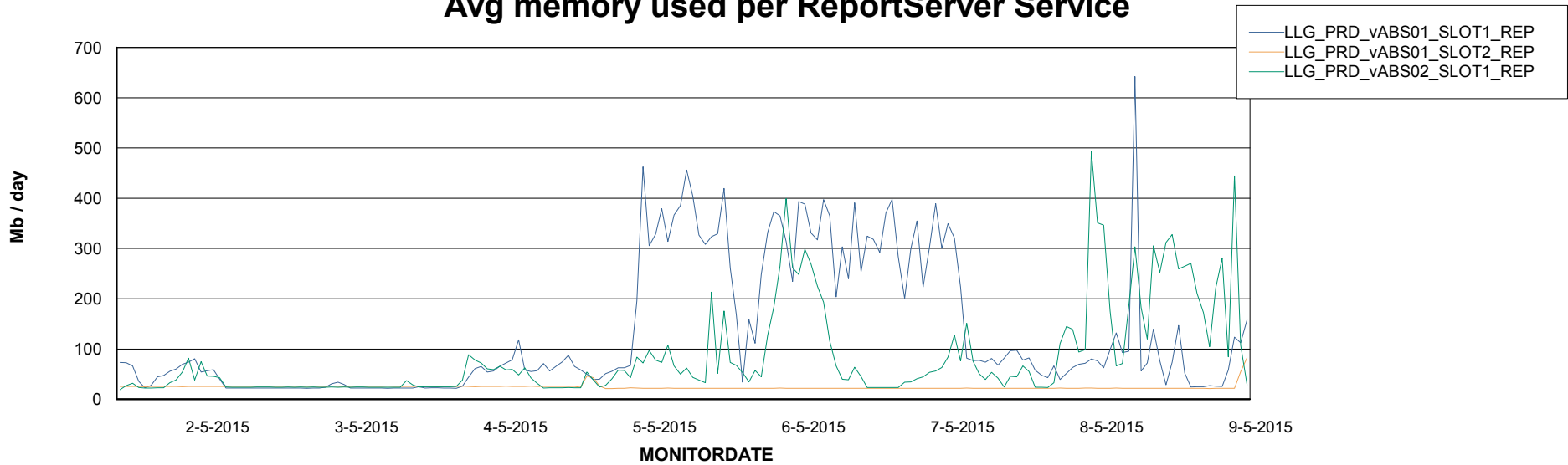


=====
ABSolute Application ReportServer Services
=====

Disaster per ReportServer



Avg memory used per ReportServer Service



Weekly SLA Customer Report

Customer LLG_Production
Database ID 53



Disaster per ABS component

