

Weekly SLA Customer Report

Customer JWR Production
Database ID 43



=====
HARDDISK USAGE JWR_PRD_JWR-ABS-01
=====

	Used disk space on / (GB)	Total disk space on / (GB)	Free disk space on / (GB)
9-5-2015	29	49	17
8-5-2015	29	49	17
7-5-2015	29	49	18
6-5-2015	29	49	18
5-5-2015	29	49	18
4-5-2015	29	49	17
3-5-2015	29	49	17

=====
HARDDISK USAGE JWR_PRD_JWR-ABS-02
=====

	Used disk space on / (GB)	Total disk space on / (GB)	Free disk space on / (GB)
9-5-2015	29	49	17
8-5-2015	29	49	17
7-5-2015	29	49	17
6-5-2015	29	49	17
5-5-2015	29	49	17
4-5-2015	29	49	17
3-5-2015	29	49	17

Weekly SLA Customer Report

Customer JWR Production
 Database ID 43



=====

HARDDISK USAGE JWR_PRD_JWR-ODB-01

=====

	Used disk space on / (GB)	Total disk space on / (GB)	Free disk space on / (GB)
9-5-2015	82	148	59
8-5-2015	82	148	58
7-5-2015	82	148	58
6-5-2015	82	148	59
5-5-2015	82	148	58
4-5-2015	83	148	58
3-5-2015	82	148	58

=====

HARDDISK USAGE JWR_PRD_JWR-ODB-02

=====

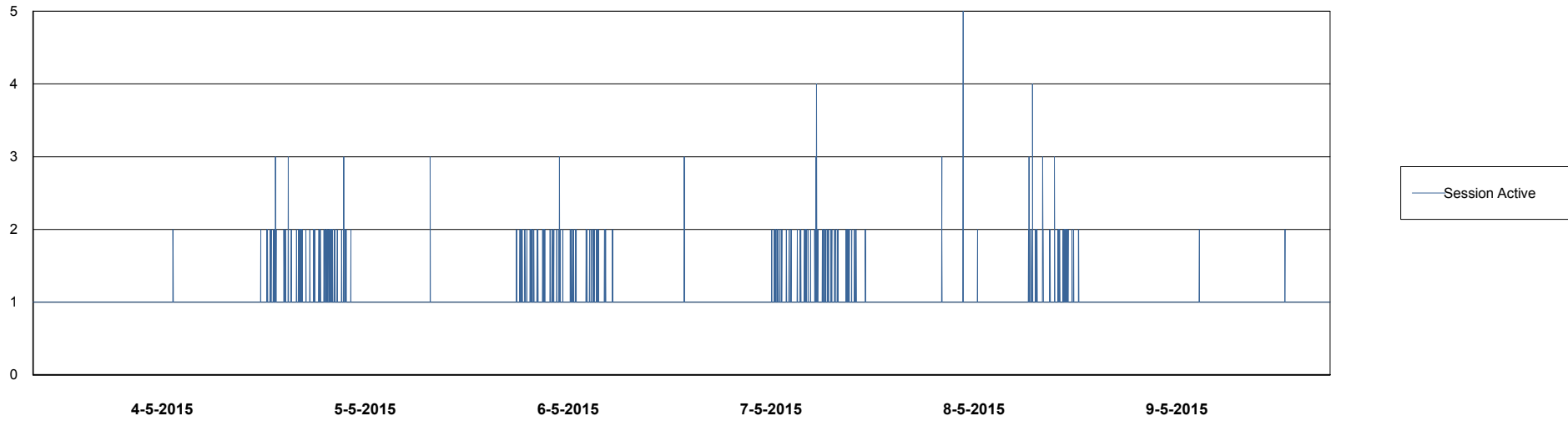
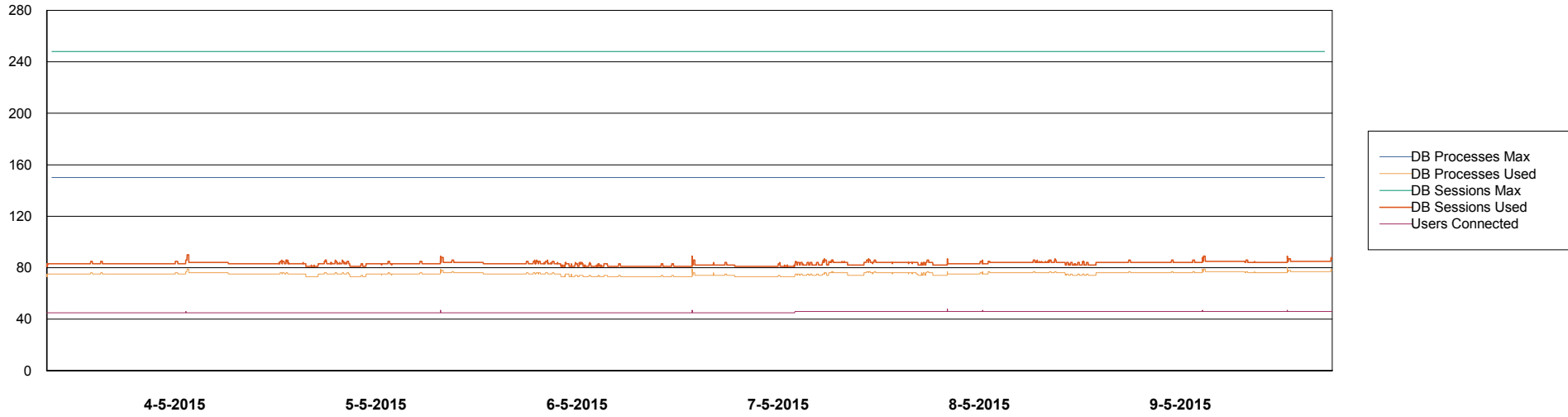
	Used disk space on / (GB)	Total disk space on / (GB)	Free disk space on / (GB)
9-5-2015	92	138	39
8-5-2015	92	138	39
7-5-2015	92	138	39
6-5-2015	92	138	39
5-5-2015	92	138	39
4-5-2015	92	138	38
3-5-2015	92	138	39

Weekly SLA Customer Report

Customer JWR Production
Database ID 43



DATABASE PERFORMANCE JWRDB_Production



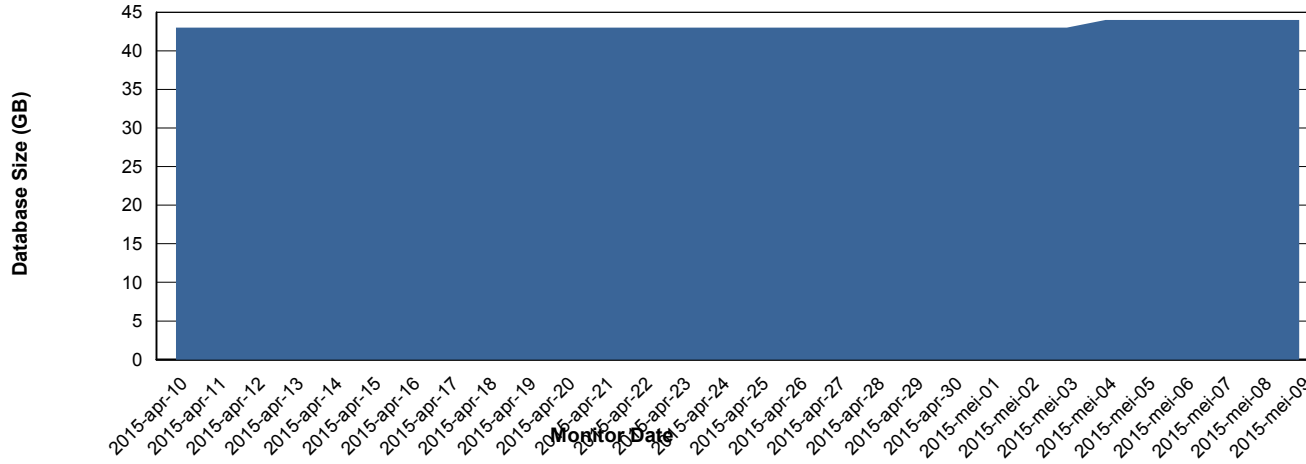
Weekly SLA Customer Report

Customer JWR Production
 Database ID 43



=====
 DATABASE SIZE JWRDB_Production
 =====

Database growth over last month



=====
 DATABASE TABLESPACES JWRDB_Production
 =====

TOTAL DATABASE SIZE PER TABLESPACE

Date	Tablespace Name	Filesize (Gb)	Usedsize (Gb)	Percentage free
9-5-2015	ABSDATA	18	12	33
	INDX	38	30	21
8-5-2015	ABSDATA	18	12	33
	INDX	38	30	21
7-5-2015	ABSDATA	18	12	33
	INDX	38	30	21
6-5-2015	ABSDATA	18	12	33
	INDX	38	30	21
5-5-2015	ABSDATA	18	12	33
	INDX	38	30	21
4-5-2015	ABSDATA	18	12	33
	INDX	38	30	21
3-5-2015	ABSDATA	18	12	33
	INDX	38	30	21

Weekly SLA Customer Report

Customer JWR Production
Database ID 43



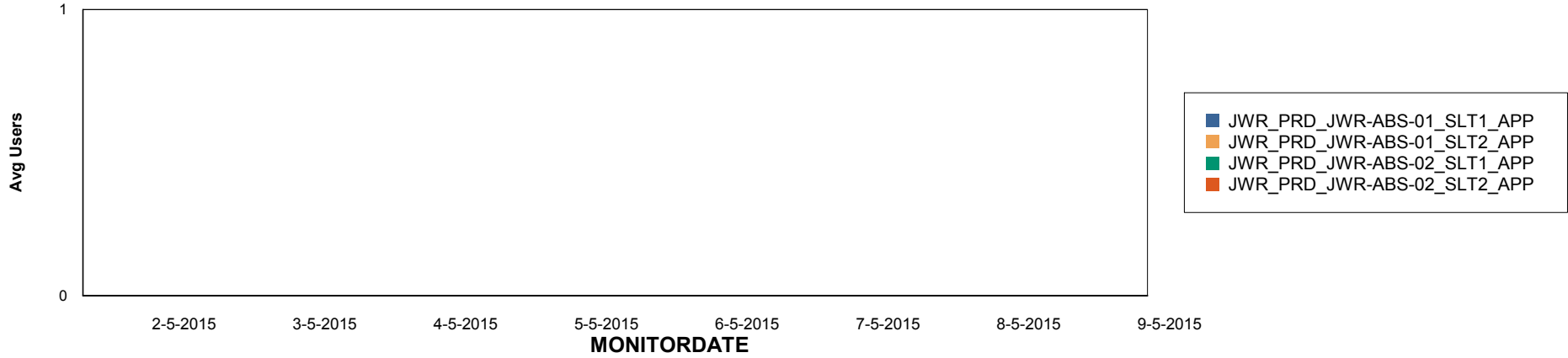
Weekly SLA Customer Report

Customer JWR Production
Database ID 43

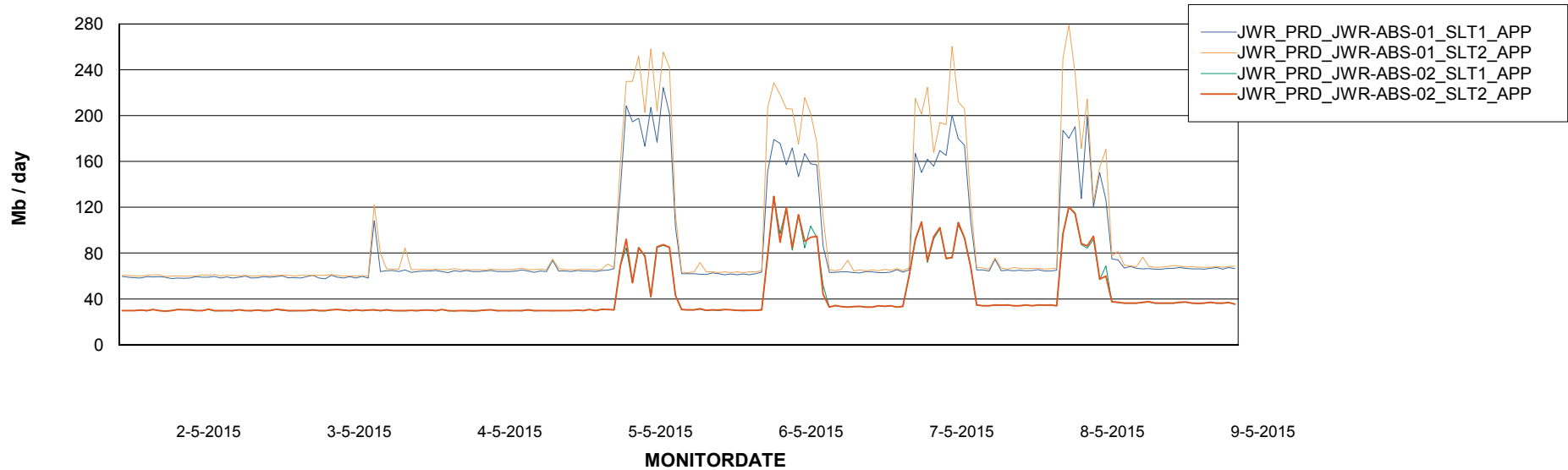


=====
ABSolute Application Server Services
=====

Disaster per ABS Server



Avg memory used per ABS Server Service



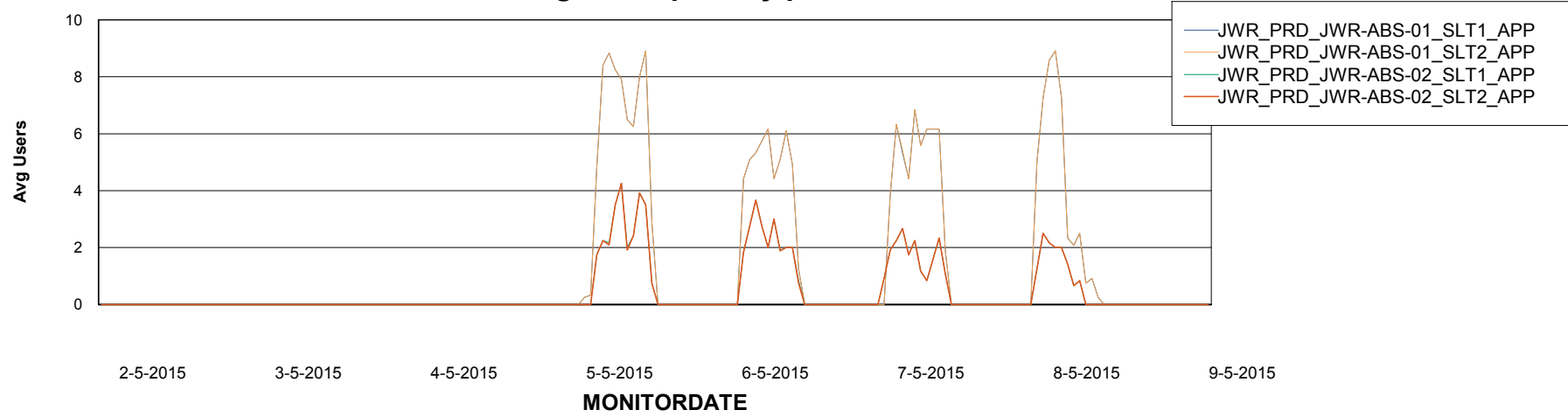
Weekly SLA Customer Report

Customer JWR Production
Database ID 43



=====
ABSolute Application Server Services
=====

Avg users per day per ABS server



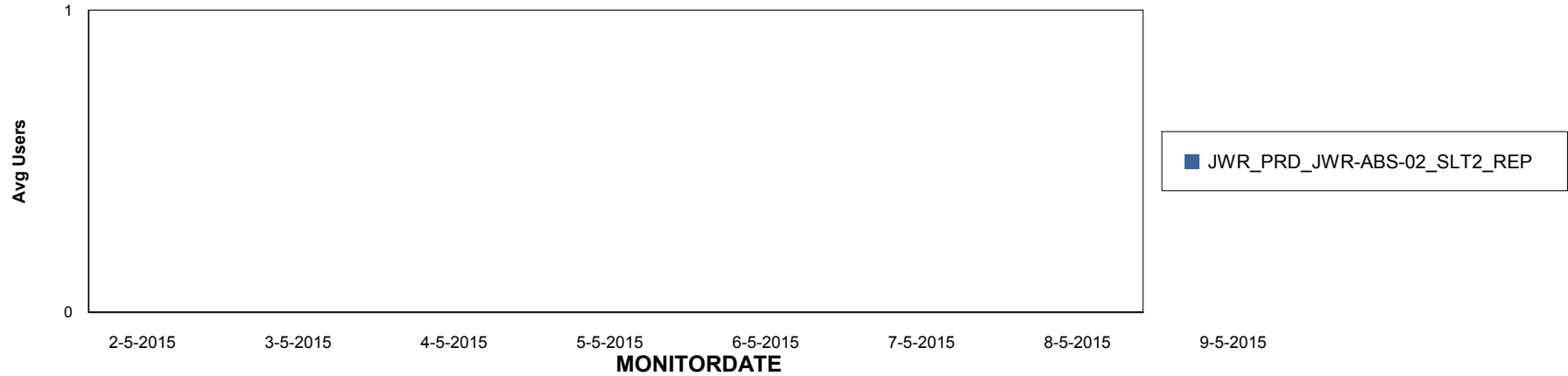
Weekly SLA Customer Report

Customer JWR Production
Database ID 43

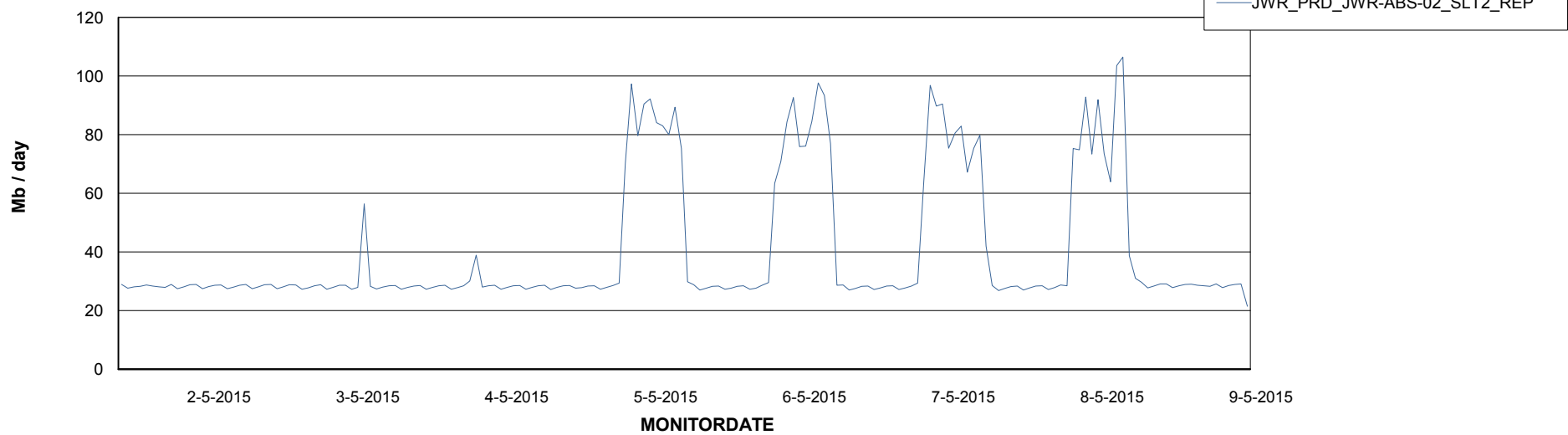


=====
ABSolute Application ReportServer Services
=====

Disaster per ReportServer



Avg memory used per ReportServer Service



Weekly SLA Customer Report

Customer JWR Production
Database ID 43



Disaster per ABS component

