

Weekly SLA Customer Report

Customer NIX_Production
Database ID 51



=====
HARDDISK USAGE NIX_PRD_ABSAPP1
=====

	Total disk space on C (GB)	Free disk space on C (GB)
2-5-2015	136	84
1-5-2015	136	84
30-4-2015	136	84
29-4-2015	136	84
28-4-2015	136	84
27-4-2015	136	84
26-4-2015	136	85

=====
HARDDISK USAGE NIX_PRD_ABSAPP2
=====

	Total disk space on C (GB)	Free disk space on C (GB)
2-5-2015	200	179
1-5-2015	200	179
30-4-2015	200	181
29-4-2015	200	182
28-4-2015	200	182
27-4-2015	200	183
26-4-2015	200	182

Weekly SLA Customer Report

Customer NIX_Production
Database ID 51



=====
HARDDISK USAGE NIX_PRD_ABSAPP3
=====

	Total disk space on C (GB)	Free disk space on C (GB)
2-5-2015	200	182
1-5-2015	200	182
30-4-2015	200	182
29-4-2015	200	182
28-4-2015	200	182
27-4-2015	200	182
26-4-2015	200	182

=====
HARDDISK USAGE NIX_PRD_ABSWEB1
=====

	Total disk space on C (GB)	Free disk space on C (GB)	Total disk space on D (GB)
2-5-2015	930	721	3
1-5-2015	930	721	3
30-4-2015	930	721	3
29-4-2015	930	721	3
28-4-2015	930	721	3
27-4-2015	930	721	3
26-4-2015	930	721	3

Weekly SLA Customer Report

Customer NIX_Production
 Database ID 51



=====
 HARDDISK USAGE NIX_PRD_ORACLE_BI01
 =====

	Total disk space on C (GB)	Free disk space on C (GB)	Total disk space on E (GB)	Free disk space on E (GB)	Total disk space on F (GB)	Free disk space on F (GB)	Total disk space on G (GB)	Free disk space on G (GB)
2-5-2015	279	201	558	489	558	458	279	241
1-5-2015	279	201	558	489	558	458	279	241
30-4-2015	279	204	558	489	558	458	279	241
29-4-2015	279	205	558	489	558	458	279	241
28-4-2015	279	204	558	489	558	458	279	241
27-4-2015	279	204	558	489	558	458	279	241
26-4-2015	279	204	558	489	558	458	279	241

=====
 HARDDISK USAGE NIX_PRD_ORACLE_BI1
 =====

	Total disk space on C (GB)	Free disk space on C (GB)	Total disk space on D (GB)	Free disk space on D (GB)	Total disk space on E (GB)	Free disk space on E (GB)
2-5-2015	139	88	279	169	99	32
1-5-2015	139	88	279	169	99	32
30-4-2015	139	88	279	169	99	32
29-4-2015	139	88	279	169	99	32
28-4-2015	139	88	279	169	99	32
27-4-2015	139	88	279	169	99	33
26-4-2015	139	88	279	169	99	33

Weekly SLA Customer Report

Customer NIX_Production
 Database ID 51



=====
 HARDDISK USAGE NIX_PRD_ORCDB1
 =====

	Total disk space on C (GB)	Free disk space on C (GB)	Total disk space on D (GB)	Free disk space on D (GB)	Total disk space on E (GB)	Free disk space on E (GB)
2-5-2015	136	67	136	27	136	47
1-5-2015	136	67	136	27	136	49
30-4-2015	136	67	136	27	136	49
29-4-2015	136	67	136	27	136	49
28-4-2015	136	67	136	27	136	49
27-4-2015	136	67	136	27	136	49
26-4-2015	136	67	136	27	136	49

=====
 HARDDISK USAGE NIX_PRD_ORCDB2
 =====

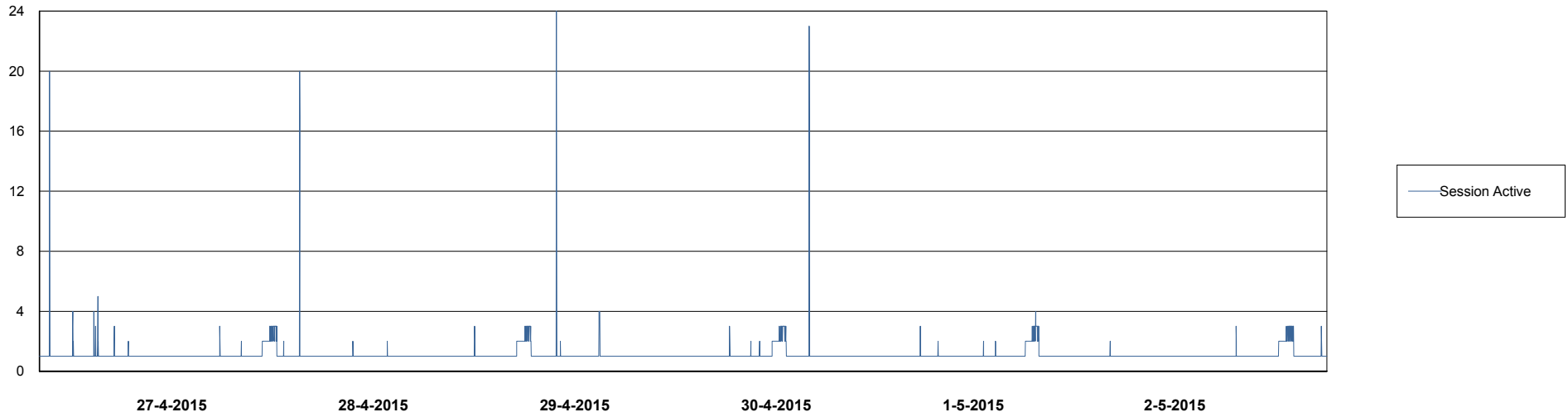
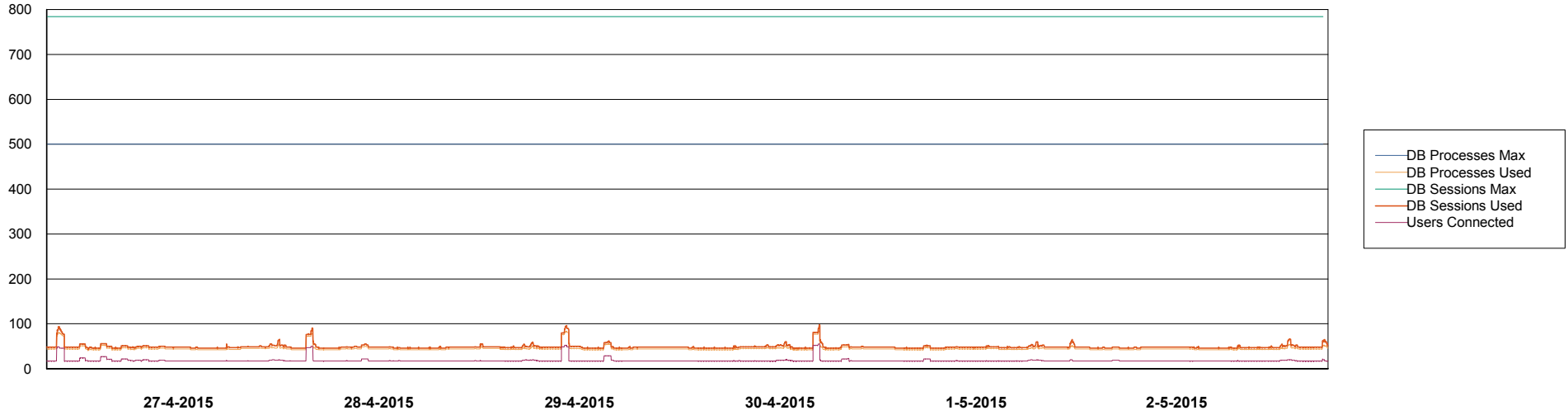
	Total disk space on C (GB)	Free disk space on C (GB)	Total disk space on D (GB)	Free disk space on D (GB)	Total disk space on E (GB)	Free disk space on E (GB)
2-5-2015	279	61	279	43	279	149
1-5-2015	279	61	279	43	279	147
30-4-2015	279	61	279	43	279	156
29-4-2015	279	61	279	43	279	147
28-4-2015	279	61	279	43	279	147
27-4-2015	279	61	279	43	279	147
26-4-2015	279	61	279	43	279	147

Weekly SLA Customer Report

Customer NIX_Production
Database ID 51



DATABASE PERFORMANCE NIXDB_BI



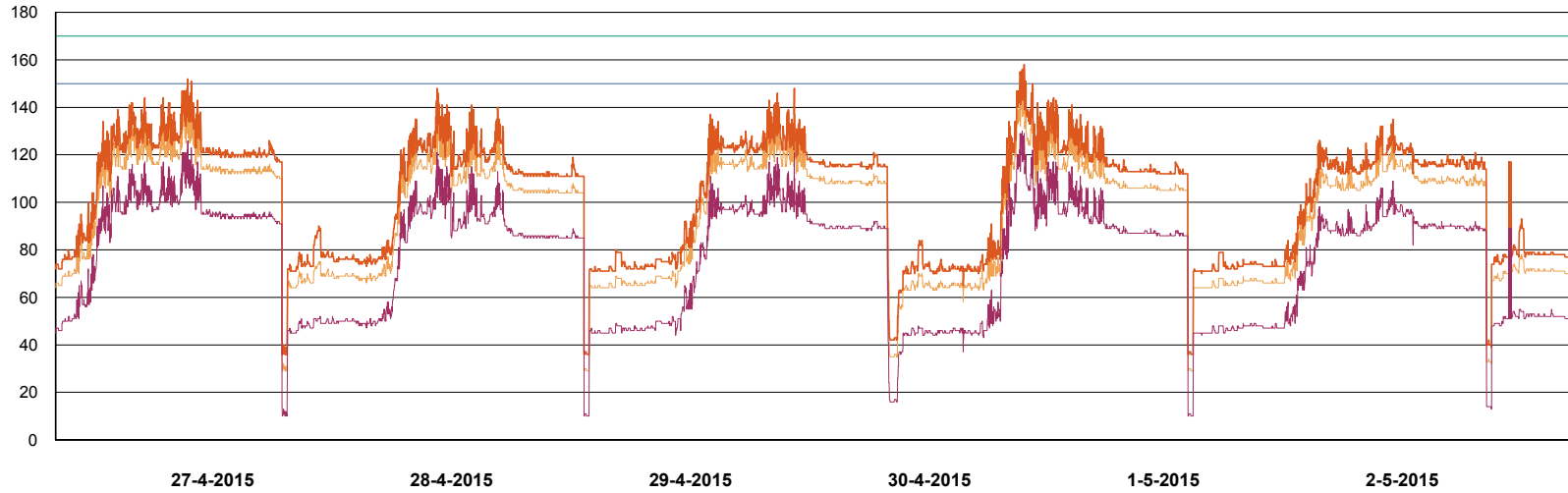
Weekly SLA Customer Report

Customer NIX_Production
Database ID 51

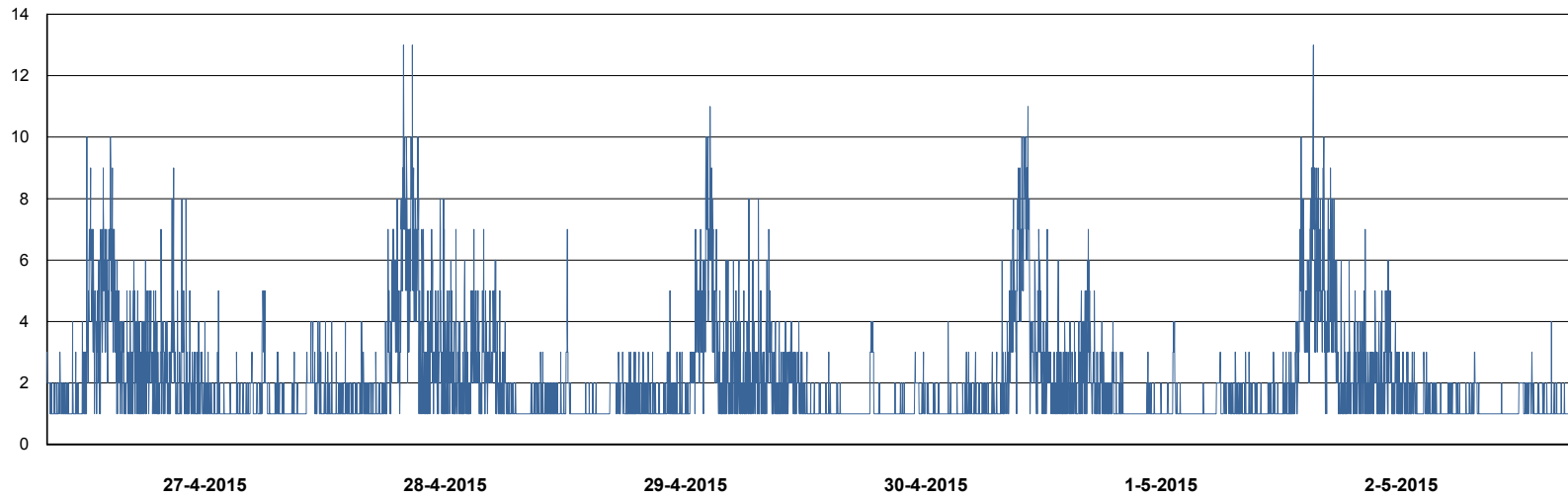


DATABASE PERFORMANCE

NIXDB_Production



- DB Processes Max
- DB Processes Used
- DB Sessions Max
- DB Sessions Used
- Users Connected



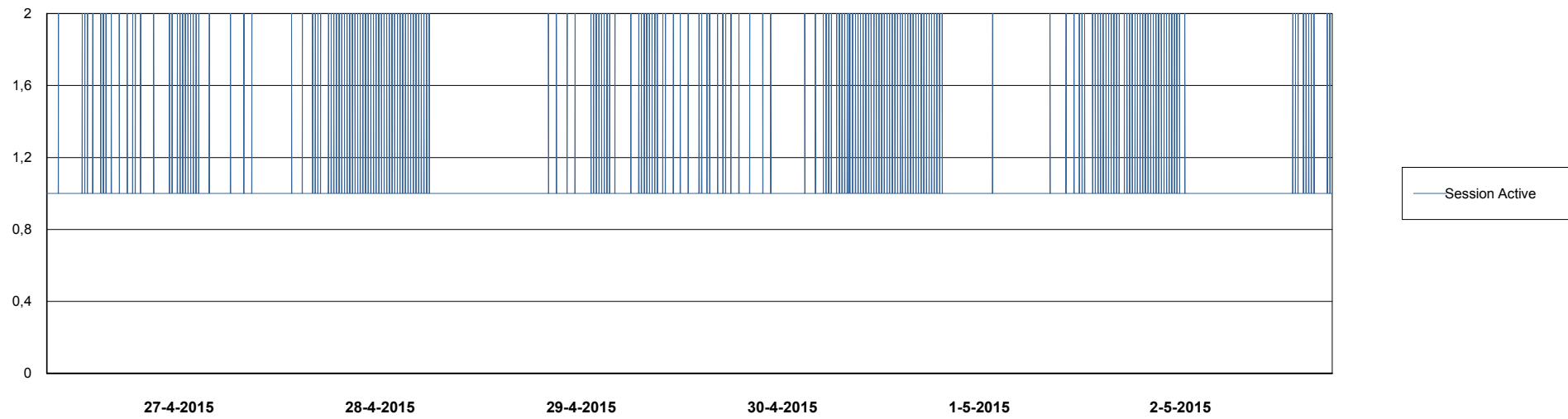
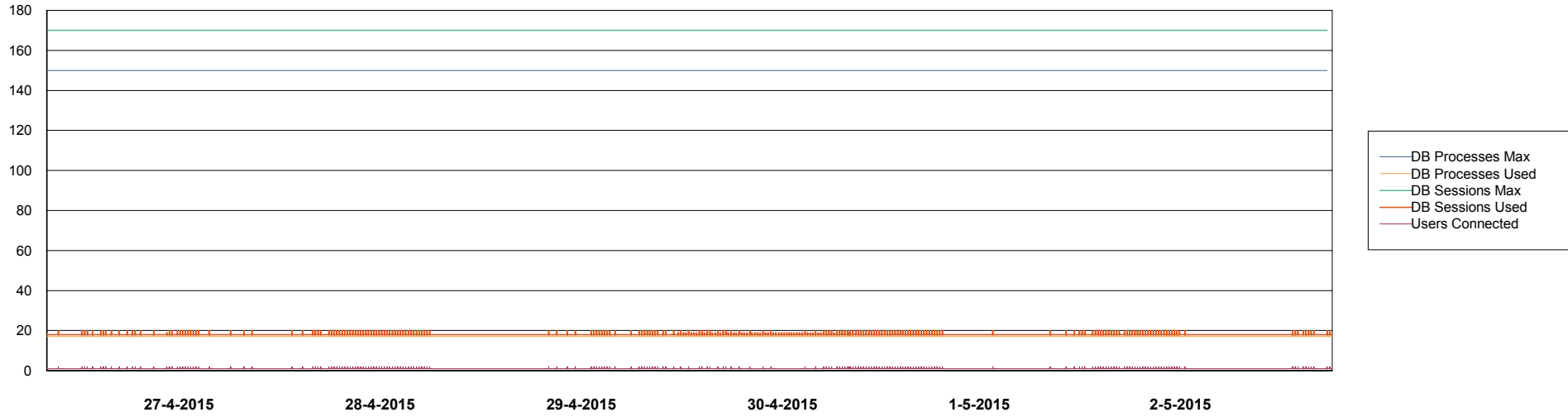
- Session Active

Weekly SLA Customer Report

Customer NIX_Production
Database ID 51



DATABASE PERFORMANCE NIXDB_Standby



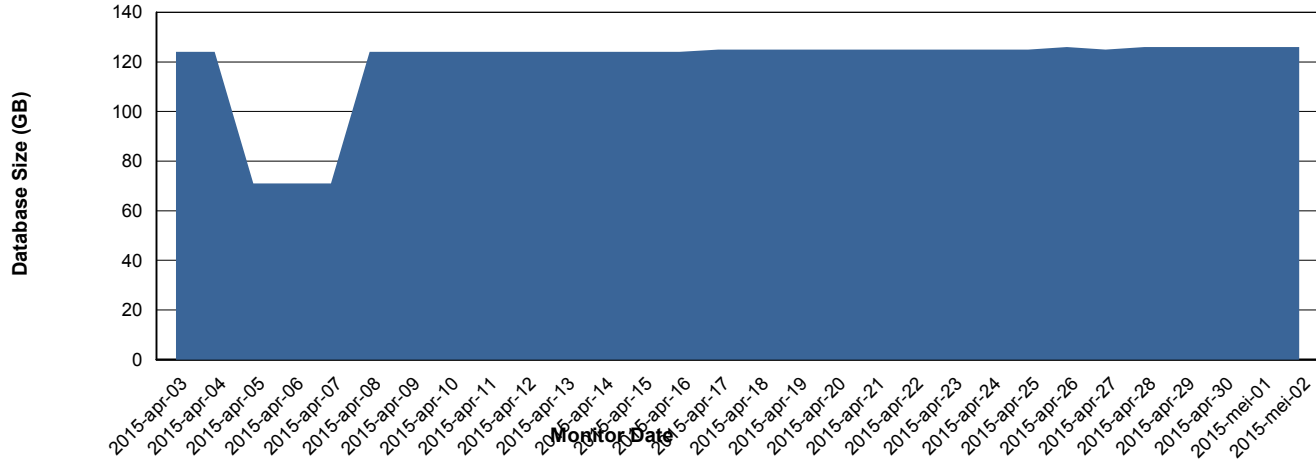
Weekly SLA Customer Report

Customer NIX_Production
Database ID 51



=====
DATABASE SIZE NIXDB_Production
=====
=====

Database growth over last month



Weekly SLA Customer Report

Customer NIX_Production
Database ID 51



=====
DATABASE TABLESPACES NIXDB_BI
=====
TOTAL DATABASE SIZE PER TABLESPACE

Date	Tablespace Name	Filesize (Gb)	Usedsize (Gb)	Percentage free
2-5-2015	ABSDATA	28	21	25
	INDX	44	33	25
1-5-2015	ABSDATA	28	21	25
	INDX	44	33	25
30-4-2015	ABSDATA	28	21	25
	INDX	44	33	25
29-4-2015	ABSDATA	28	21	25
	INDX	44	33	25
28-4-2015	ABSDATA	28	21	25
	INDX	44	33	25
27-4-2015	ABSDATA	28	21	25
	INDX	44	33	25
26-4-2015	ABSDATA	28	21	25
	INDX	44	33	25

Weekly SLA Customer Report

Customer NIX_Production
 Database ID 51



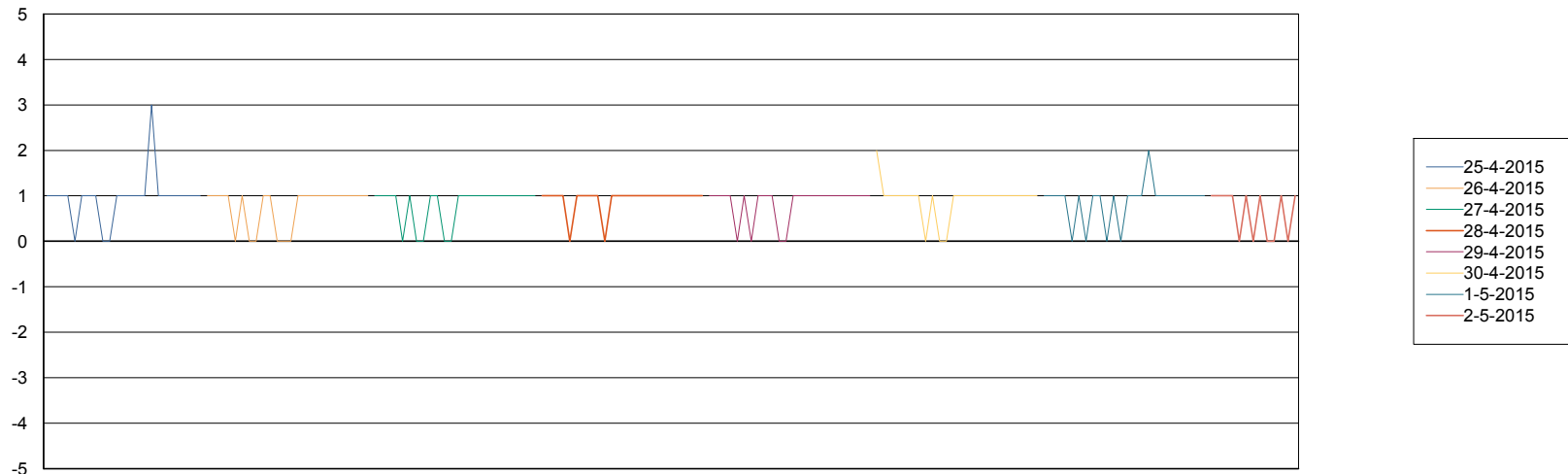
=====
 DATABASE TABLESPACES NIXDB_Production
 =====

TOTAL DATABASE SIZE PER TABLESPACE

Date	Tablespace Name	Filesize (Gb)	Usedsize (Gb)	Percentage free
2-5-2015	ABSDATA	40	32	20
	INDX	109	91	17
1-5-2015	ABSDATA	40	32	20
	INDX	109	91	17
30-4-2015	ABSDATA	40	32	20
	INDX	109	91	17
29-4-2015	ABSDATA	40	32	20
	INDX	109	91	17
28-4-2015	ABSDATA	40	32	20
	INDX	109	91	17
27-4-2015	ABSDATA	40	32	20
	INDX	109	91	17
26-4-2015	ABSDATA	40	32	20
	INDX	109	90	17

=====
 STANDBY DATABASE HEALTH NIX_Production
 =====

Recovery lag for last 7 days



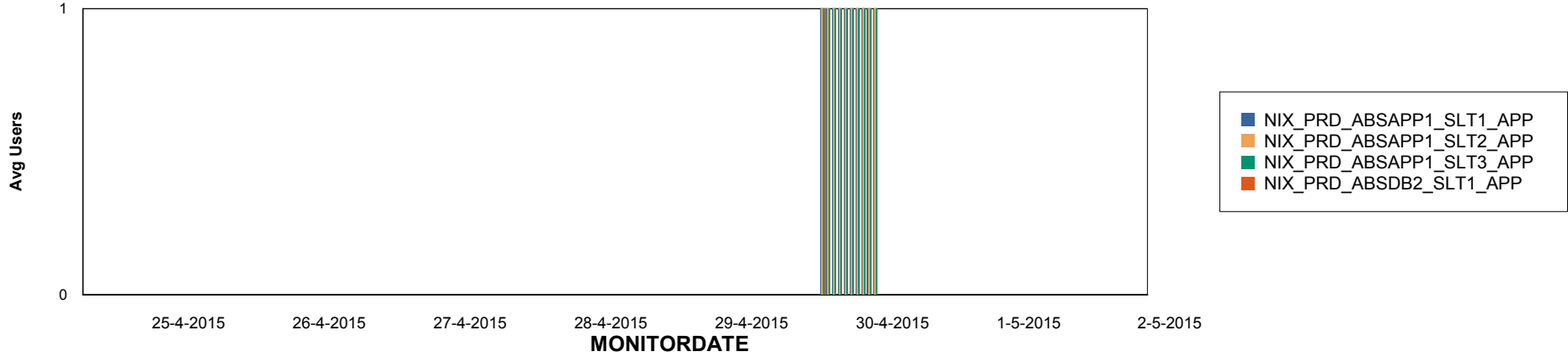
Weekly SLA Customer Report

Customer NIX_Production
Database ID 51

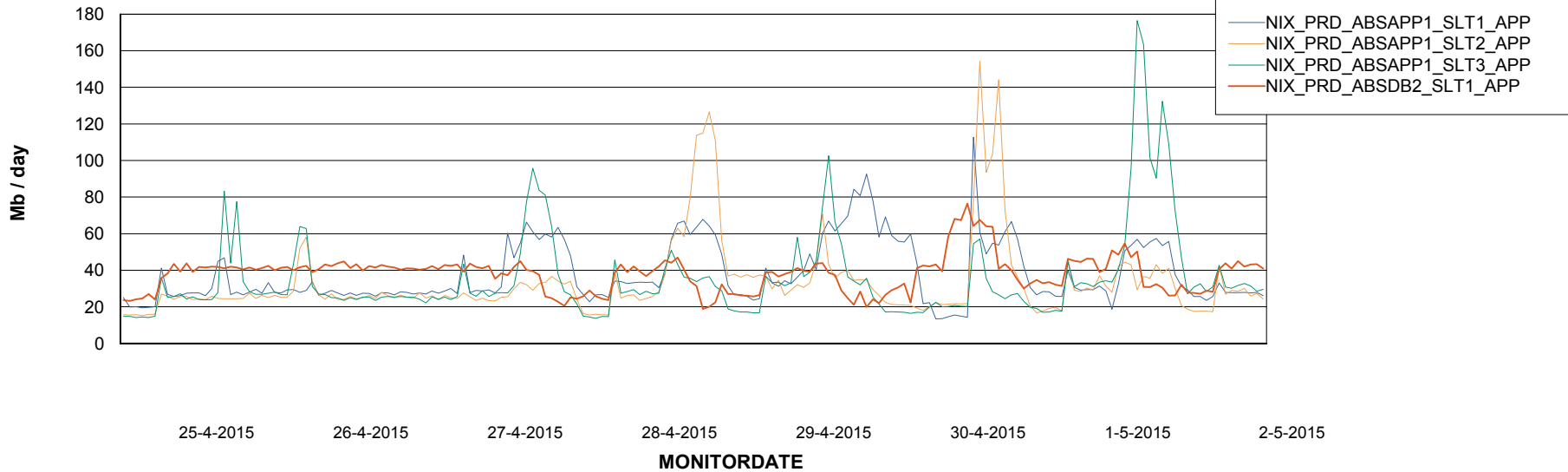


ABSolute Application Server Services

Disaster per ABS Server



Avg memory used per ABS Server Service



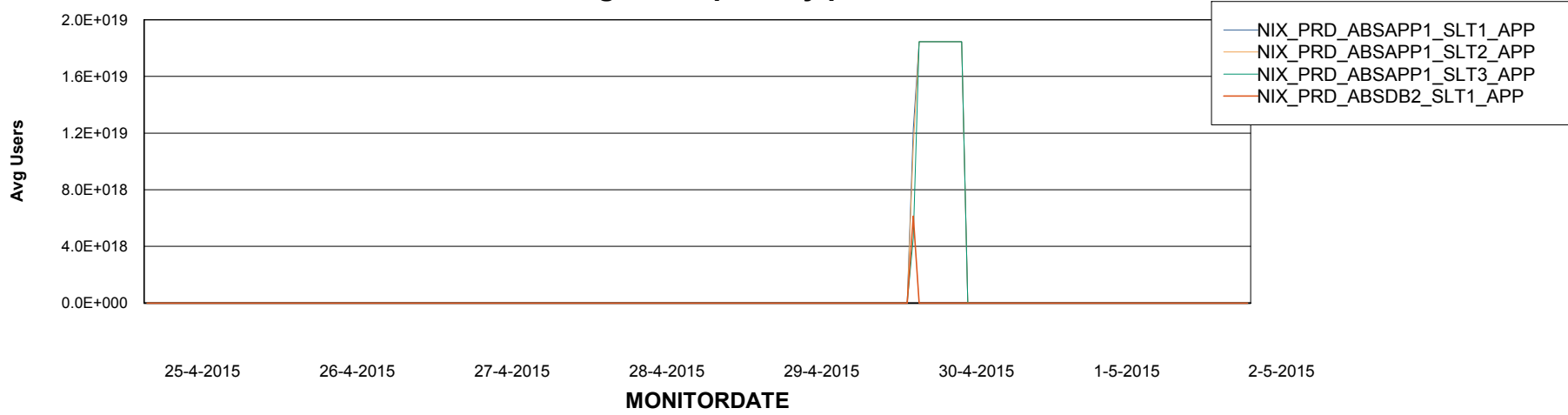
Weekly SLA Customer Report

Customer NIX_Production
Database ID 51



=====
ABSolute Application Server Services
=====

Avg users per day per ABS server



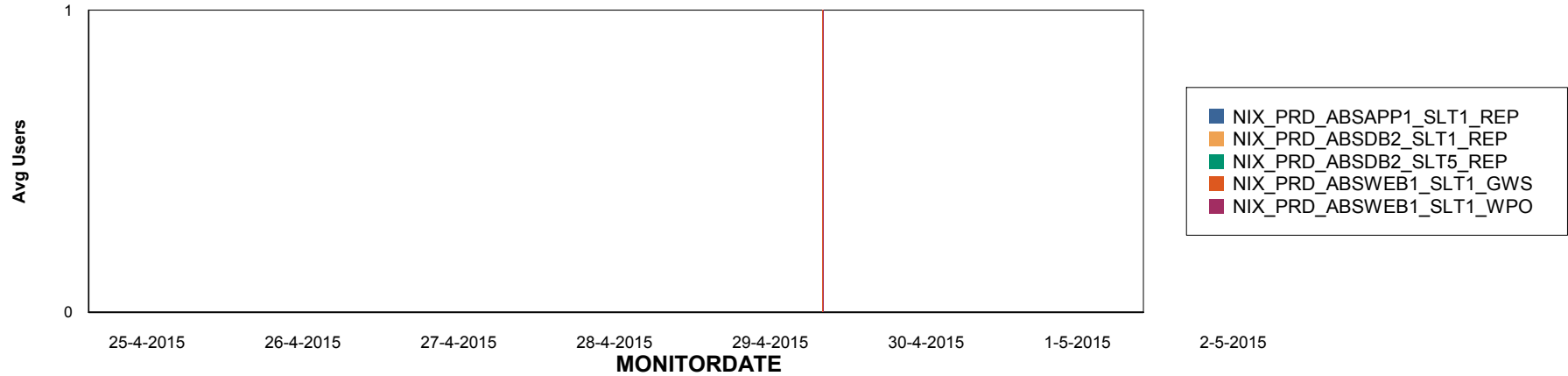
Weekly SLA Customer Report

Customer NIX_Production
Database ID 51

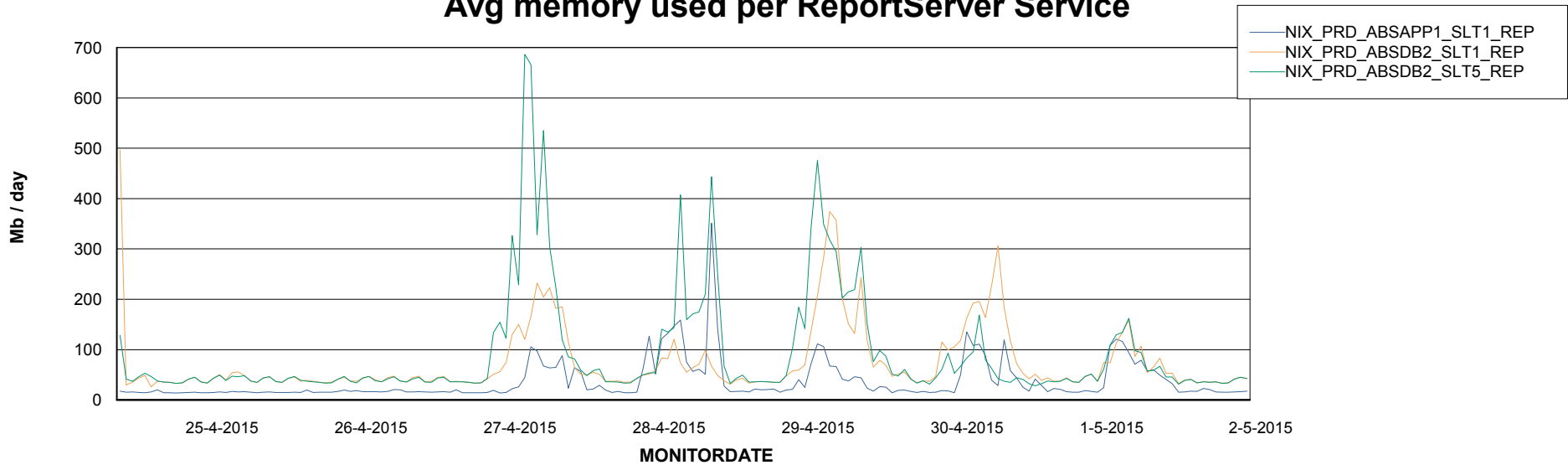


=====
ABSolute Application ReportServer Services
=====

Disaster per ReportServer



Avg memory used per ReportServer Service



Weekly SLA Customer Report

Customer NIX_Production
Database ID 51



Disaster per ABS component

