

Weekly SLA Customer Report

Customer LLG_Production
 Database ID 53



=====
 HARDDISK USAGE LLG_PRD_BI01
 =====

| | Total disk space on C (GB) | Free disk space on C (GB) |
|-----------|----------------------------|---------------------------|
| 2-5-2015 | 559 | 378 |
| 1-5-2015 | 559 | 378 |
| 30-4-2015 | 559 | 378 |
| 29-4-2015 | 559 | 377 |
| 28-4-2015 | 559 | 378 |
| 27-4-2015 | 559 | 378 |
| 26-4-2015 | 559 | 378 |

=====
 HARDDISK USAGE LLG_PRD_ORIS1
 =====

| | Total disk space on C (GB) | Free disk space on C (GB) | Total disk space on D (GB) | Free disk space on D (GB) |
|-----------|----------------------------|---------------------------|----------------------------|---------------------------|
| 2-5-2015 | 279 | 176 | 600 | 94 |
| 1-5-2015 | 279 | 176 | 600 | 95 |
| 30-4-2015 | 279 | 176 | 600 | 97 |
| 29-4-2015 | 279 | 176 | 600 | 98 |
| 28-4-2015 | 279 | 176 | 600 | 100 |
| 27-4-2015 | 279 | 176 | 600 | 104 |
| 26-4-2015 | 279 | 176 | 600 | 128 |

Weekly SLA Customer Report

Customer LLG_Production
Database ID 53



=====
HARDDISK USAGE LLG_PRD_OR2
=====

| | Total disk space on C (GB) | Free disk space on C (GB) | Total disk space on D (GB) | Free disk space on D (GB) |
|-----------|----------------------------|---------------------------|----------------------------|---------------------------|
| 2-5-2015 | 293 | 247 | 545 | 84 |
| 1-5-2015 | 293 | 247 | 545 | 85 |
| 30-4-2015 | 293 | 247 | 545 | 87 |
| 29-4-2015 | 293 | 247 | 545 | 88 |
| 28-4-2015 | 293 | 247 | 545 | 90 |
| 27-4-2015 | 293 | 247 | 545 | 94 |
| 26-4-2015 | 293 | 247 | 545 | 118 |

=====
HARDDISK USAGE LLG_PRD_vABS01
=====

| | Total disk space on C (GB) | Free disk space on C (GB) | Total disk space on D (GB) | Free disk space on D (GB) |
|-----------|----------------------------|---------------------------|----------------------------|---------------------------|
| 2-5-2015 | 150 | 63 | 150 | 143 |
| 1-5-2015 | 150 | 63 | 150 | 143 |
| 30-4-2015 | 150 | 67 | 150 | 143 |
| 29-4-2015 | 150 | 76 | 150 | 143 |
| 28-4-2015 | 150 | 77 | 150 | 143 |
| 27-4-2015 | 150 | 78 | 150 | 143 |
| 26-4-2015 | 150 | 78 | 150 | 143 |

Weekly SLA Customer Report

Customer LLG_Production
Database ID 53



=====
HARDDISK USAGE LLG_PRD_vABS02
=====

| | Total disk space on C (GB) | Free disk space on C (GB) | Total disk space on D (GB) | Free disk space on D (GB) |
|-----------|-------------------------------|------------------------------|-------------------------------|------------------------------|
| 2-5-2015 | 150 | 68 | 150 | 124 |
| 1-5-2015 | 150 | 68 | 150 | 124 |
| 30-4-2015 | 150 | 73 | 150 | 124 |
| 29-4-2015 | 150 | 83 | 150 | 124 |
| 28-4-2015 | 150 | 84 | 150 | 124 |
| 27-4-2015 | 150 | 85 | 150 | 124 |
| 26-4-2015 | 150 | 85 | 150 | 124 |

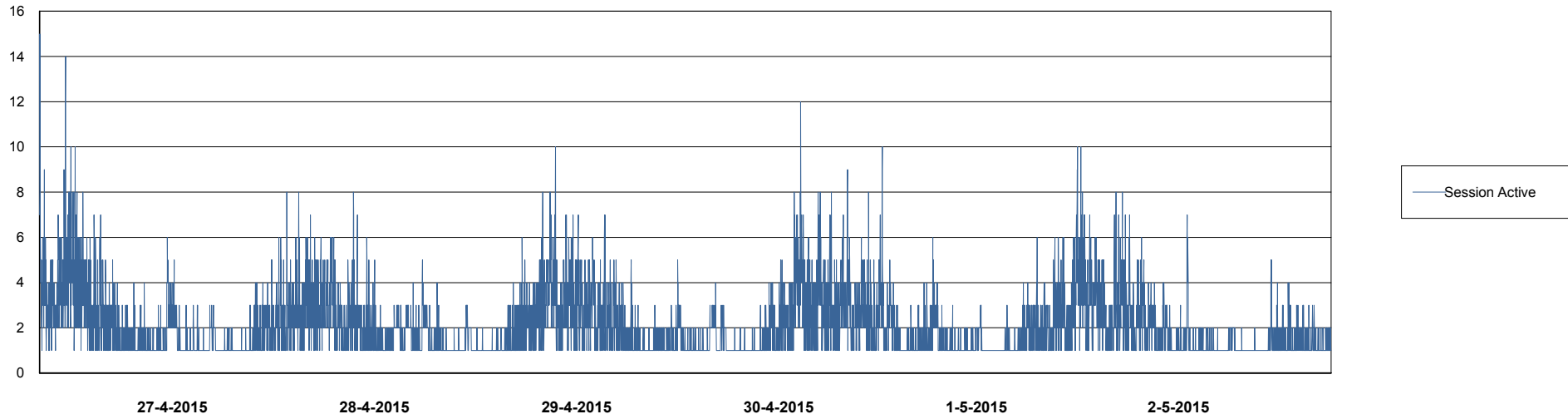
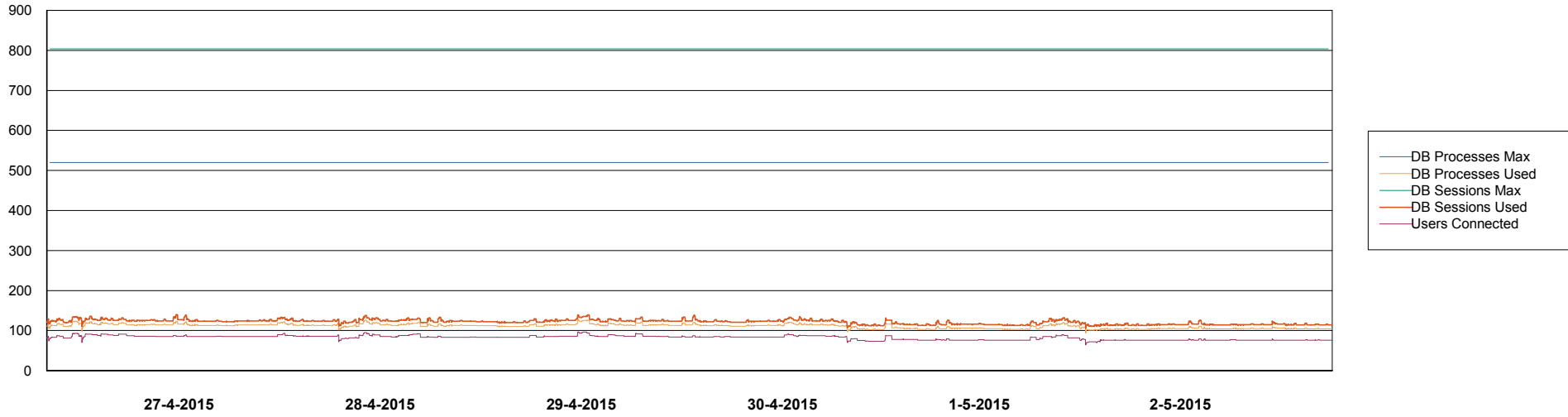
Weekly SLA Customer Report

Customer LLG_Production
Database ID 53



DATABASE PERFORMANCE

LLGDB_Production

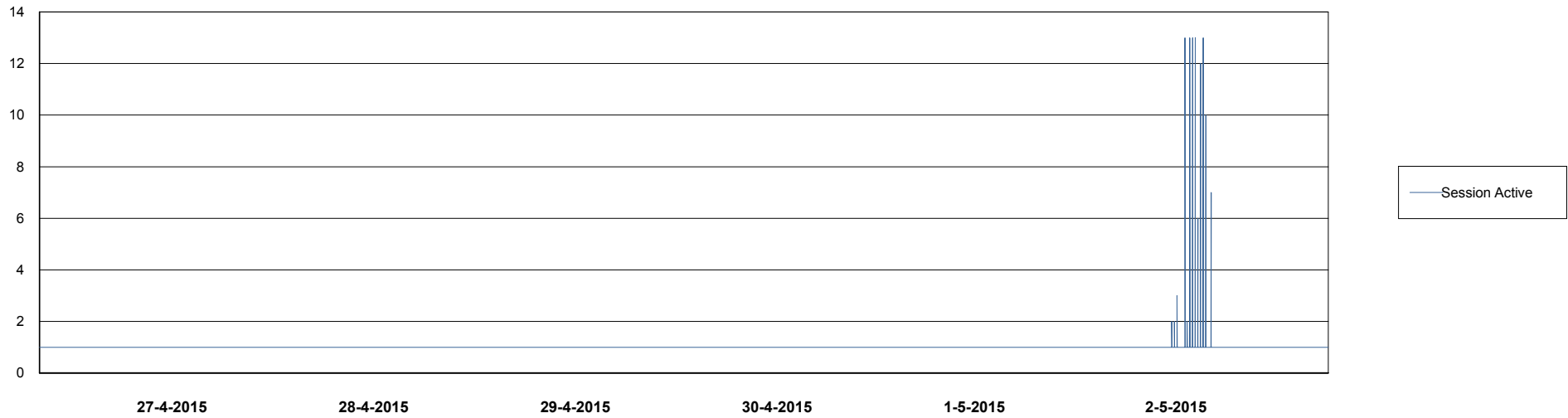
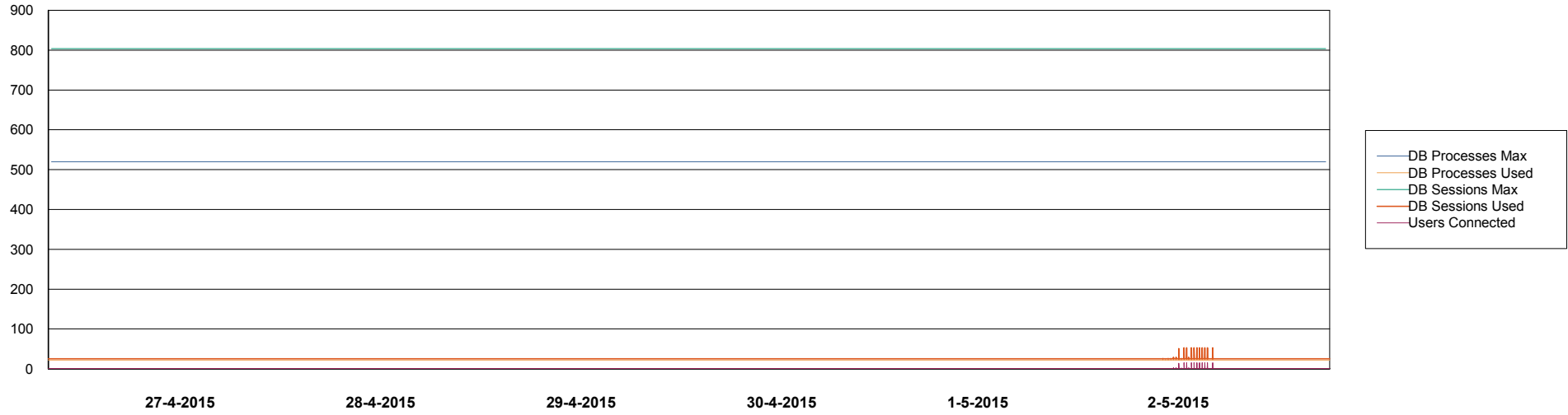


Weekly SLA Customer Report

Customer LLG_Production
Database ID 53



DATABASE PERFORMANCE LLGDB_Standby



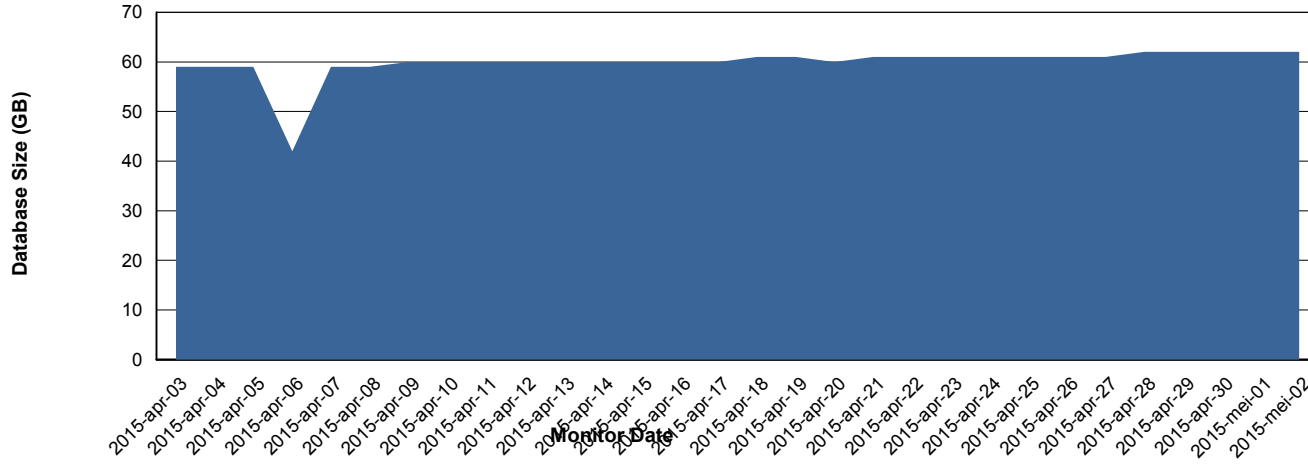
Weekly SLA Customer Report

Customer LLG_Production
 Database ID 53



=====
 DATABASE SIZE LLGDB_Production
 =====

Database growth over last month



=====
 DATABASE TABLESPACES LLGDB_Production
 =====

TOTAL DATABASE SIZE PER TABLESPACE

| Date | Tablespace Name | Filesize (Gb) | Usedsize (Gb) | Percentage free |
|-----------|-----------------|---------------|---------------|-----------------|
| 2-5-2015 | ABSDATA | 28 | 22 | 21 |
| | INDX | 44 | 38 | 14 |
| 1-5-2015 | ABSDATA | 28 | 22 | 21 |
| | INDX | 44 | 38 | 14 |
| 30-4-2015 | ABSDATA | 28 | 22 | 21 |
| | INDX | 44 | 38 | 14 |
| 29-4-2015 | ABSDATA | 28 | 22 | 21 |
| | INDX | 44 | 38 | 14 |
| 28-4-2015 | ABSDATA | 28 | 22 | 21 |
| | INDX | 44 | 38 | 14 |
| 27-4-2015 | ABSDATA | 28 | 22 | 21 |
| | INDX | 44 | 38 | 14 |
| 26-4-2015 | ABSDATA | 28 | 21 | 25 |
| | INDX | 44 | 37 | 16 |

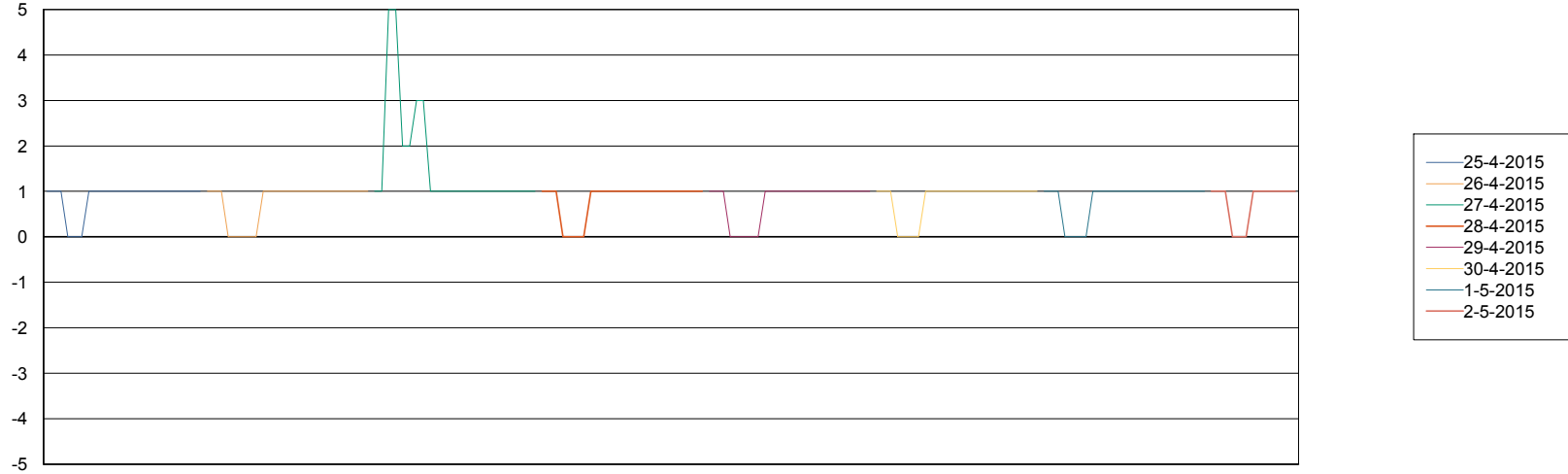
Weekly SLA Customer Report

Customer LLG_Production
Database ID 53



=====
STANDBY DATABASE HEALTH LLG_Production
=====

Recovery lag for last 7 days



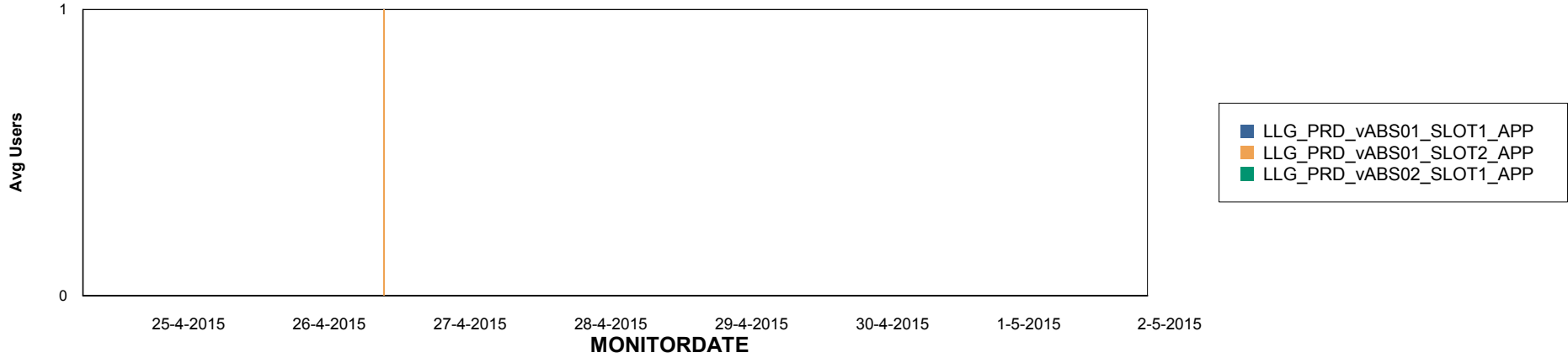
Weekly SLA Customer Report

Customer LLG_Production
Database ID 53

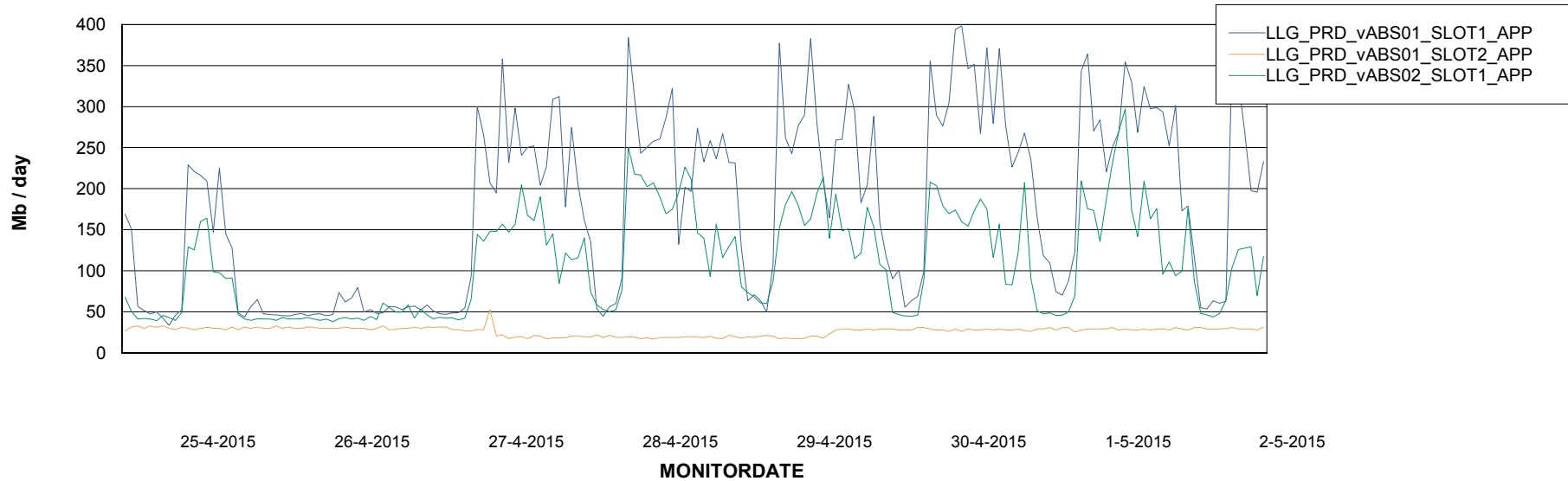


=====
ABSolute Application Server Services
=====

Disaster per ABS Server



Avg memory used per ABS Server Service



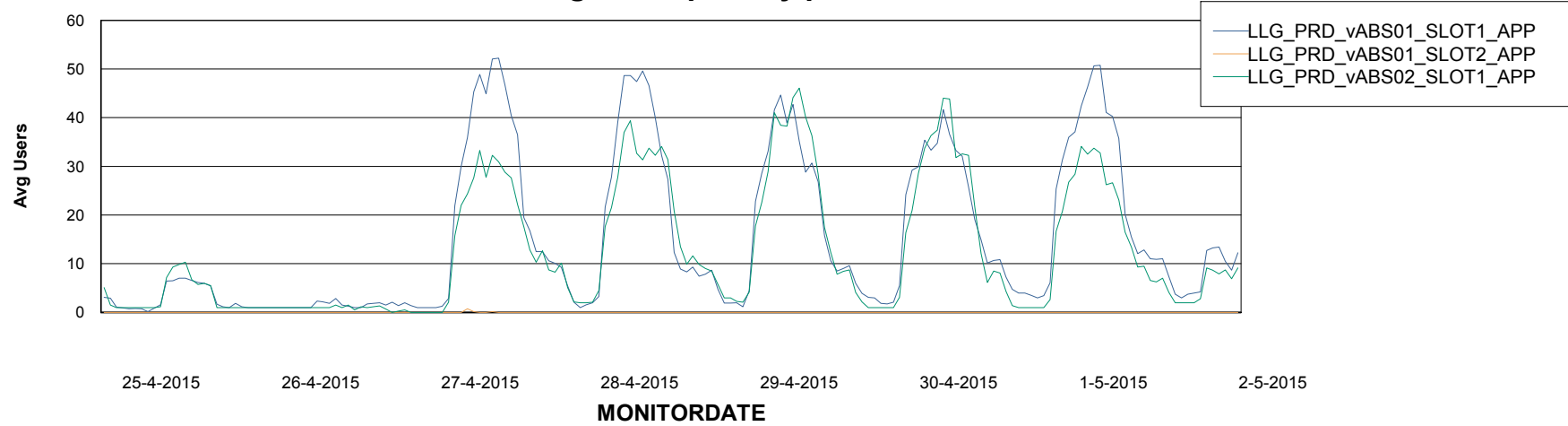
Weekly SLA Customer Report

Customer LLG_Production
Database ID 53



=====
ABSolute Application Server Services
=====

Avg users per day per ABS server



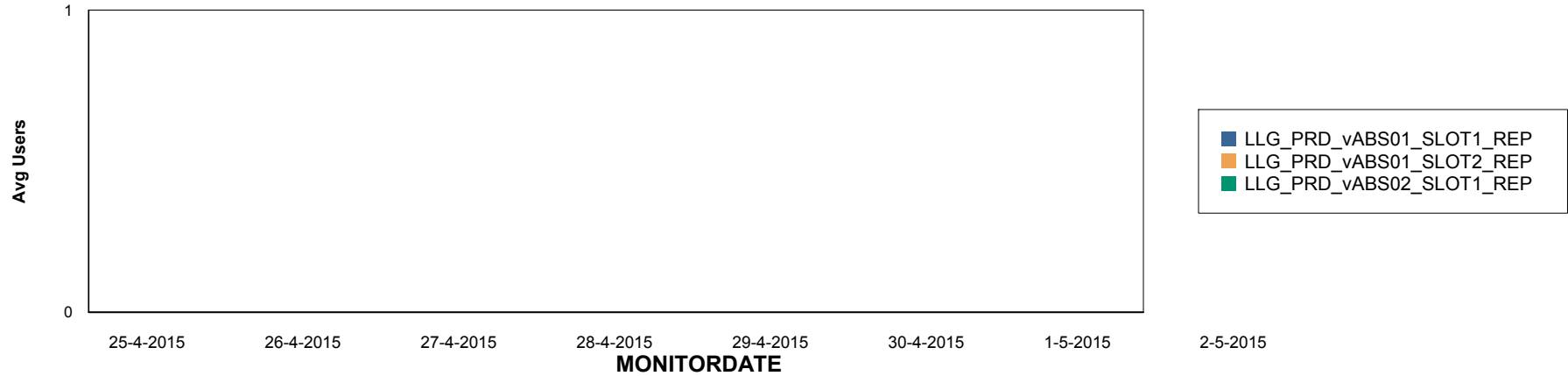
Weekly SLA Customer Report

Customer LLG_Production
Database ID 53

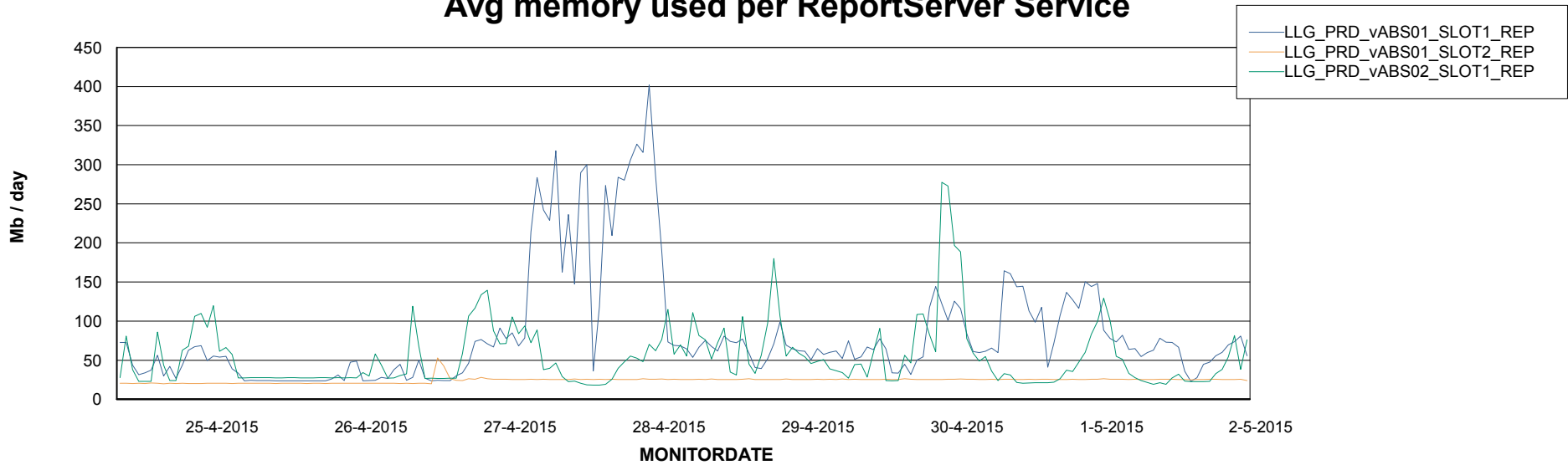


=====
ABSolute Application ReportServer Services
=====

Disaster per ReportServer



Avg memory used per ReportServer Service



Weekly SLA Customer Report

Customer LLG_Production
Database ID 53



Disaster per ABS component

