

# Weekly SLA Customer Report

Customer NIX\_Production  
 Database ID 51



=====  
 HARDDISK USAGE NIX\_PRD\_ABSAPP1  
 =====

|           | Total disk space on C (GB) | Free disk space on C (GB) |
|-----------|----------------------------|---------------------------|
| 25-4-2015 | 136                        | 85                        |
| 24-4-2015 | 136                        | 85                        |
| 23-4-2015 | 136                        | 85                        |
| 22-4-2015 | 136                        | 85                        |
| 21-4-2015 | 136                        | 85                        |
| 20-4-2015 | 136                        | 85                        |
| 19-4-2015 | 136                        | 85                        |

=====  
 HARDDISK USAGE NIX\_PRD\_ABSAPP2  
 =====

|           | Total disk space on C (GB) | Free disk space on C (GB) |
|-----------|----------------------------|---------------------------|
| 25-4-2015 | 200                        | 182                       |
| 24-4-2015 | 200                        | 182                       |
| 23-4-2015 | 200                        | 182                       |
| 22-4-2015 | 200                        | 182                       |
| 21-4-2015 | 200                        | 182                       |
| 20-4-2015 | 200                        | 182                       |
| 19-4-2015 | 200                        | 183                       |

# Weekly SLA Customer Report

Customer NIX\_Production  
 Database ID 51



=====  
 HARDDISK USAGE NIX\_PRD\_ABSAPP3  
 =====

|           | Total disk space on C (GB) | Free disk space on C (GB) |
|-----------|----------------------------|---------------------------|
| 25-4-2015 | 200                        | 182                       |
| 24-4-2015 | 200                        | 182                       |
| 23-4-2015 | 200                        | 182                       |
| 22-4-2015 | 200                        | 182                       |
| 21-4-2015 | 200                        | 182                       |
| 20-4-2015 | 200                        | 182                       |
| 19-4-2015 | 200                        | 182                       |

=====  
 HARDDISK USAGE NIX\_PRD\_ABSWEB1  
 =====

|           | Total disk space on C (GB) | Free disk space on C (GB) | Total disk space on D (GB) |
|-----------|----------------------------|---------------------------|----------------------------|
| 25-4-2015 | 930                        | 721                       | 3                          |
| 24-4-2015 | 930                        | 721                       | 3                          |
| 23-4-2015 | 930                        | 722                       | 3                          |
| 22-4-2015 | 930                        | 722                       | 3                          |
| 21-4-2015 | 930                        | 722                       | 3                          |
| 20-4-2015 | 930                        | 722                       | 3                          |
| 19-4-2015 | 930                        | 722                       | 3                          |

## Weekly SLA Customer Report

Customer      NIX\_Production  
 Database ID    51



=====  
 HARDDISK USAGE    NIX\_PRD\_ORACLE\_BI01  
 =====

|           | Total disk space on C (GB) | Free disk space on C (GB) | Total disk space on E (GB) | Free disk space on E (GB) | Total disk space on F (GB) | Free disk space on F (GB) | Total disk space on G (GB) | Free disk space on G (GB) |
|-----------|----------------------------|---------------------------|----------------------------|---------------------------|----------------------------|---------------------------|----------------------------|---------------------------|
| 25-4-2015 | 279                        | 204                       | 558                        | 489                       | 558                        | 458                       | 279                        | 241                       |
| 24-4-2015 | 279                        | 204                       | 558                        | 489                       | 558                        | 458                       | 279                        | 241                       |
| 23-4-2015 | 279                        | 204                       | 558                        | 489                       | 558                        | 458                       | 279                        | 241                       |
| 22-4-2015 | 279                        | 204                       | 558                        | 489                       | 558                        | 458                       | 279                        | 241                       |
| 21-4-2015 | 279                        | 206                       | 558                        | 489                       | 558                        | 458                       | 279                        | 241                       |
| 20-4-2015 | 279                        | 208                       | 558                        | 489                       | 558                        | 458                       | 279                        | 241                       |
| 19-4-2015 | 279                        | 208                       | 558                        | 489                       | 558                        | 458                       | 279                        | 241                       |

=====  
 HARDDISK USAGE    NIX\_PRD\_ORACLE\_BI1  
 =====

|           | Total disk space on C (GB) | Free disk space on C (GB) | Total disk space on D (GB) | Free disk space on D (GB) | Total disk space on E (GB) | Free disk space on E (GB) |
|-----------|----------------------------|---------------------------|----------------------------|---------------------------|----------------------------|---------------------------|
| 25-4-2015 | 139                        | 88                        | 279                        | 169                       | 99                         | 33                        |
| 24-4-2015 | 139                        | 88                        | 279                        | 169                       | 99                         | 33                        |
| 23-4-2015 | 139                        | 88                        | 279                        | 169                       | 99                         | 33                        |
| 22-4-2015 | 139                        | 88                        | 279                        | 169                       | 99                         | 32                        |
| 21-4-2015 | 139                        | 88                        | 279                        | 169                       | 99                         | 33                        |
| 20-4-2015 | 139                        | 88                        | 279                        | 169                       | 99                         | 33                        |
| 19-4-2015 | 139                        | 88                        | 279                        | 169                       | 99                         | 33                        |

## Weekly SLA Customer Report

Customer      NIX\_Production  
 Database ID    51



=====  
 HARDDISK USAGE    NIX\_PRD\_ORCDB1  
 =====

|           | Total disk space<br>on C (GB) | Free disk space<br>on C (GB) | Total disk space<br>on D (GB) | Free disk space<br>on D (GB) | Total disk space<br>on E (GB) | Free disk space<br>on E (GB) |
|-----------|-------------------------------|------------------------------|-------------------------------|------------------------------|-------------------------------|------------------------------|
| 25-4-2015 | 136                           | 67                           | 136                           | 27                           | 136                           | 47                           |
| 24-4-2015 | 136                           | 67                           | 136                           | 27                           | 136                           | 50                           |
| 23-4-2015 | 136                           | 67                           | 136                           | 27                           | 136                           | 50                           |
| 22-4-2015 | 136                           | 67                           | 136                           | 27                           | 136                           | 50                           |
| 21-4-2015 | 136                           | 67                           | 136                           | 27                           | 136                           | 50                           |
| 20-4-2015 | 136                           | 67                           | 136                           | 27                           | 136                           | 50                           |
| 19-4-2015 | 136                           | 67                           | 136                           | 27                           | 136                           | 50                           |

=====  
 HARDDISK USAGE    NIX\_PRD\_ORCDB2  
 =====

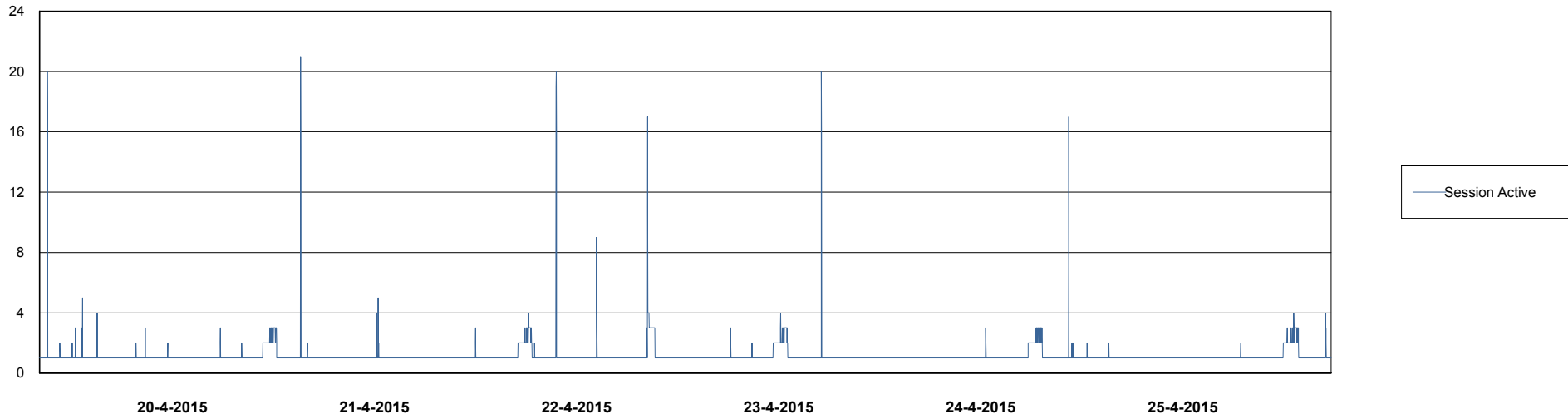
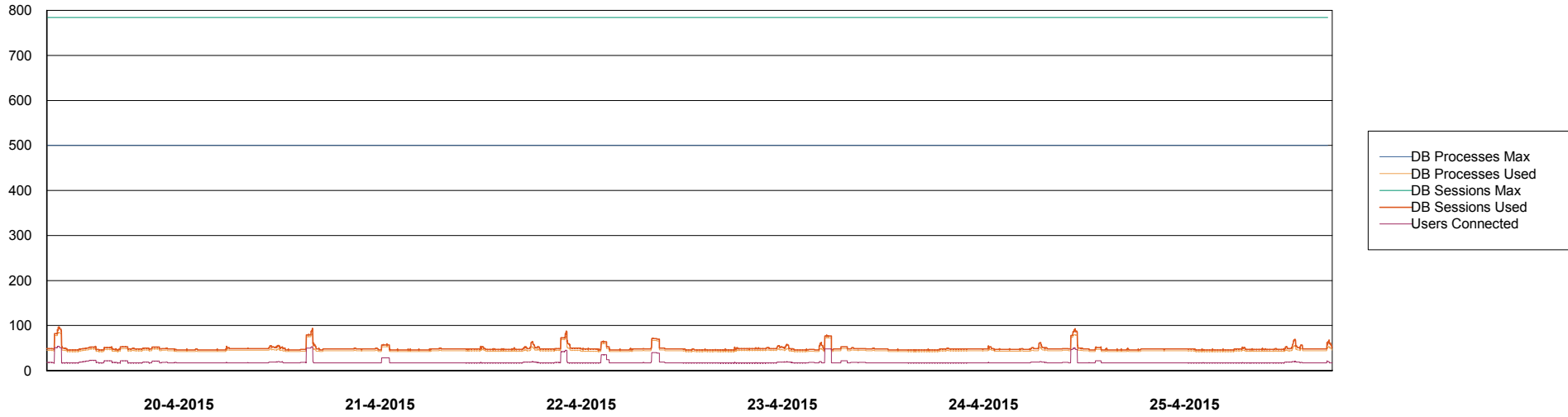
|           | Total disk space<br>on C (GB) | Free disk space<br>on C (GB) | Total disk space<br>on D (GB) | Free disk space<br>on D (GB) | Total disk space<br>on E (GB) | Free disk space<br>on E (GB) |
|-----------|-------------------------------|------------------------------|-------------------------------|------------------------------|-------------------------------|------------------------------|
| 25-4-2015 | 279                           | 61                           | 279                           | 43                           | 279                           | 149                          |
| 24-4-2015 | 279                           | 61                           | 279                           | 43                           | 279                           | 148                          |
| 23-4-2015 | 279                           | 61                           | 279                           | 43                           | 279                           | 148                          |
| 22-4-2015 | 279                           | 61                           | 279                           | 43                           | 279                           | 148                          |
| 21-4-2015 | 279                           | 61                           | 279                           | 43                           | 279                           | 148                          |
| 20-4-2015 | 279                           | 61                           | 279                           | 43                           | 279                           | 153                          |
| 19-4-2015 | 279                           | 61                           | 279                           | 43                           | 279                           | 145                          |

# Weekly SLA Customer Report

Customer NIX\_Production  
Database ID 51



DATABASE PERFORMANCE NIXDB\_BI

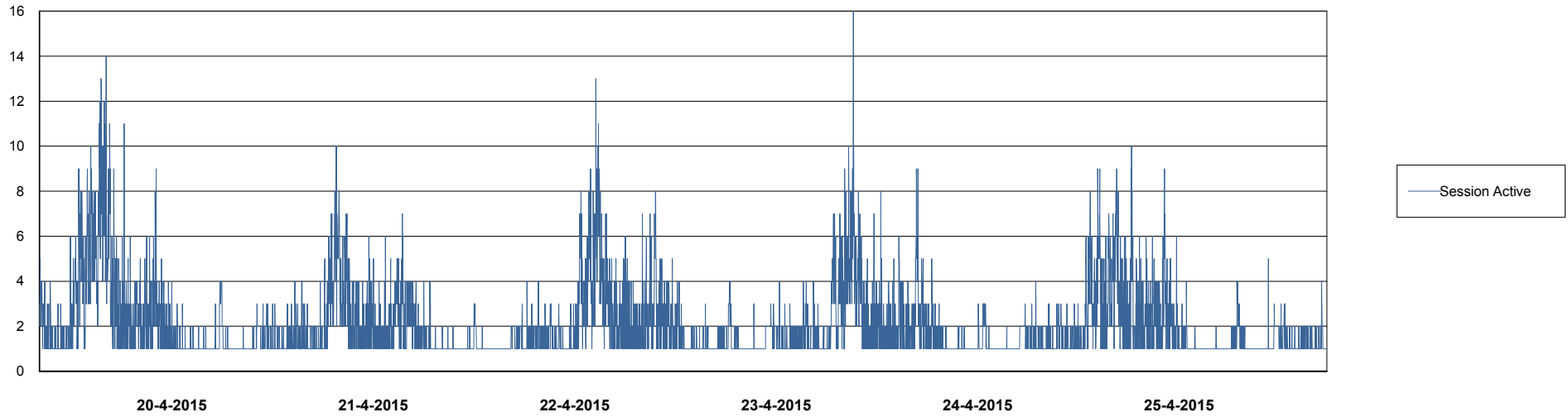
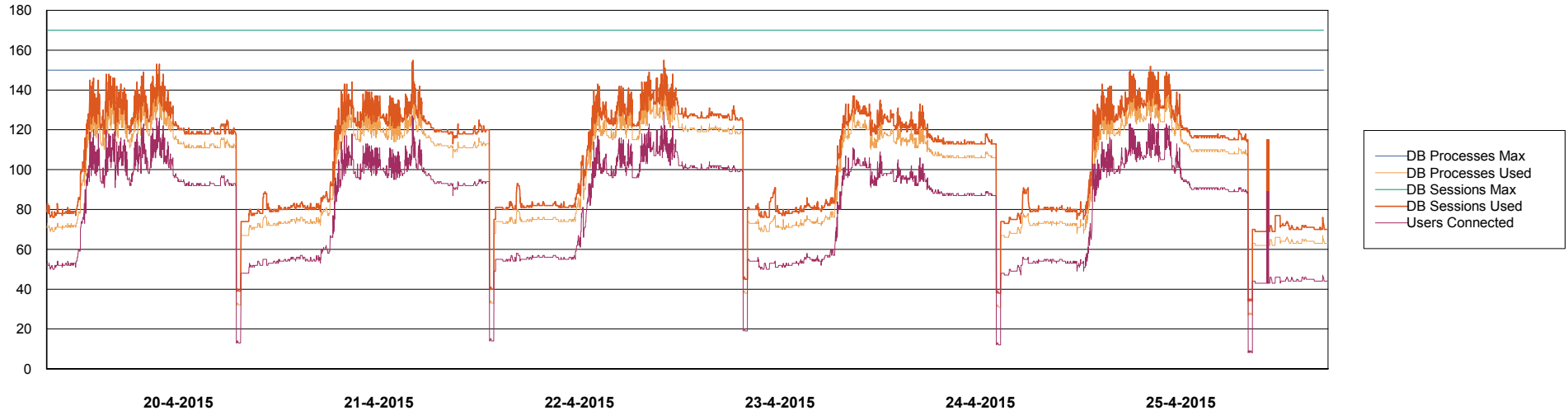


# Weekly SLA Customer Report

Customer NIX\_Production  
Database ID 51



DATABASE PERFORMANCE NIXDB\_Production

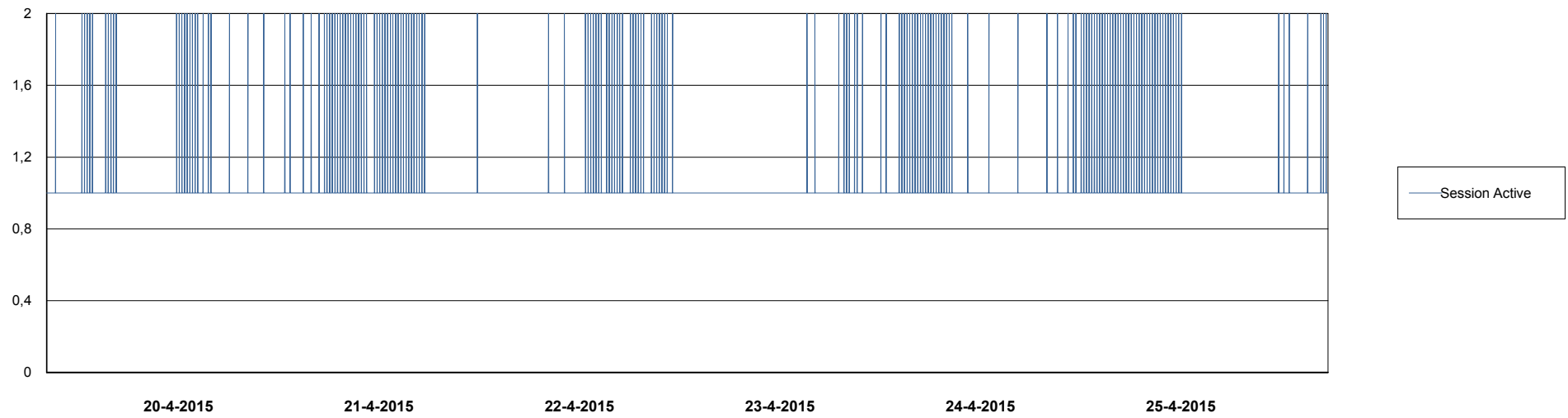
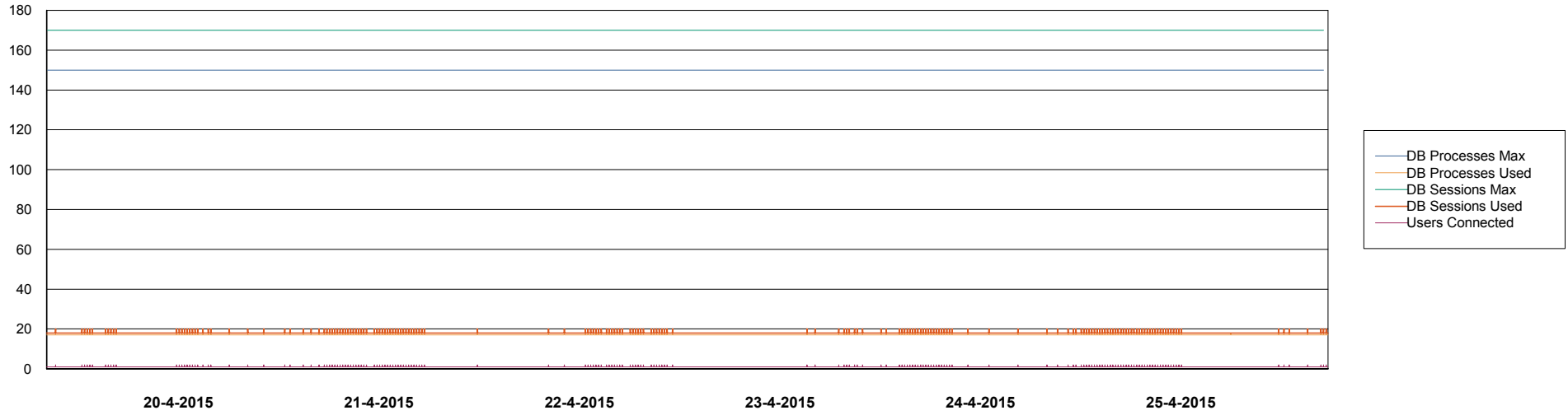


# Weekly SLA Customer Report

Customer NIX\_Production  
Database ID 51



## DATABASE PERFORMANCE NIXDB\_Standby



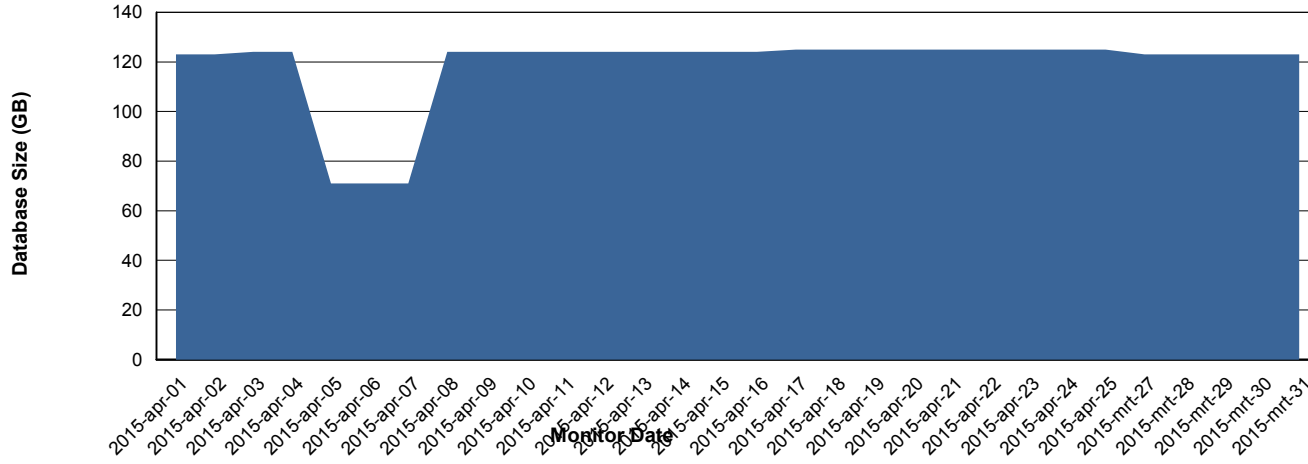
# Weekly SLA Customer Report

Customer NIX\_Production  
Database ID 51



=====  
DATABASE SIZE NIXDB\_Production  
=====  
=====

## Database growth over last month



# Weekly SLA Customer Report

Customer NIX\_Production  
 Database ID 51



=====  
 DATABASE TABLESPACES NIXDB\_BI  
 =====

TOTAL DATABASE SIZE PER TABLESPACE

| Date      | Tablespace Name | Filesize (Gb) | Usedsize (Gb) | Percentage free |
|-----------|-----------------|---------------|---------------|-----------------|
| 25-4-2015 | ABSDATA         | 28            | 21            | 25              |
|           | INDX            | 44            | 33            | 25              |
| 24-4-2015 | ABSDATA         | 28            | 21            | 25              |
|           | INDX            | 44            | 33            | 25              |
| 23-4-2015 | ABSDATA         | 28            | 21            | 25              |
|           | INDX            | 44            | 33            | 25              |
| 22-4-2015 | ABSDATA         | 28            | 21            | 25              |
|           | INDX            | 44            | 32            | 27              |
| 21-4-2015 | ABSDATA         | 28            | 21            | 25              |
|           | INDX            | 44            | 32            | 27              |
| 20-4-2015 | ABSDATA         | 28            | 20            | 29              |
|           | INDX            | 44            | 32            | 27              |
| 19-4-2015 | ABSDATA         | 28            | 20            | 29              |
|           | INDX            | 44            | 32            | 27              |

# Weekly SLA Customer Report

Customer NIX\_Production  
 Database ID 51



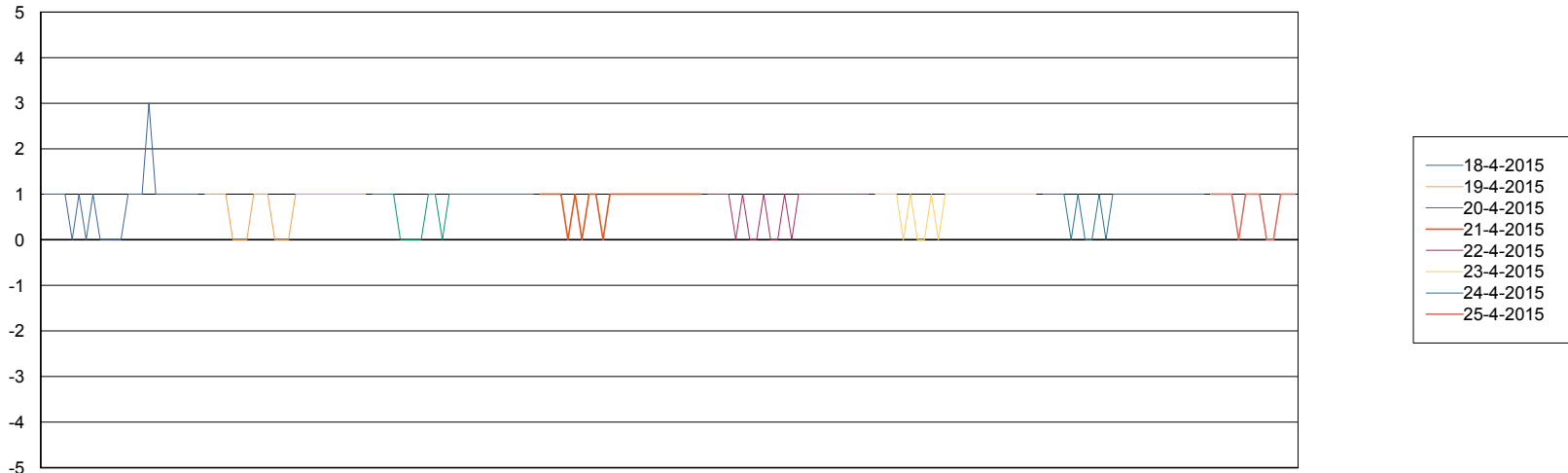
=====  
 DATABASE TABLESPACES NIXDB\_Production  
 =====

TOTAL DATABASE SIZE PER TABLESPACE

| Date      | Tablespace Name | Filesize (Gb) | Usedsize (Gb) | Percentage free |
|-----------|-----------------|---------------|---------------|-----------------|
| 25-4-2015 | ABSDATA         | 40            | 32            | 20              |
|           | INDX            | 109           | 90            | 17              |
| 24-4-2015 | ABSDATA         | 40            | 32            | 20              |
|           | INDX            | 109           | 90            | 17              |
| 23-4-2015 | ABSDATA         | 40            | 32            | 20              |
|           | INDX            | 109           | 90            | 17              |
| 22-4-2015 | ABSDATA         | 40            | 32            | 20              |
|           | INDX            | 109           | 90            | 17              |
| 21-4-2015 | ABSDATA         | 40            | 32            | 20              |
|           | INDX            | 109           | 90            | 17              |
| 20-4-2015 | ABSDATA         | 40            | 32            | 20              |
|           | INDX            | 109           | 90            | 17              |
| 19-4-2015 | ABSDATA         | 40            | 32            | 20              |
|           | INDX            | 109           | 90            | 17              |

=====  
 STANDBY DATABASE HEALTH NIX\_Production  
 =====

Recovery lag for last 7 days



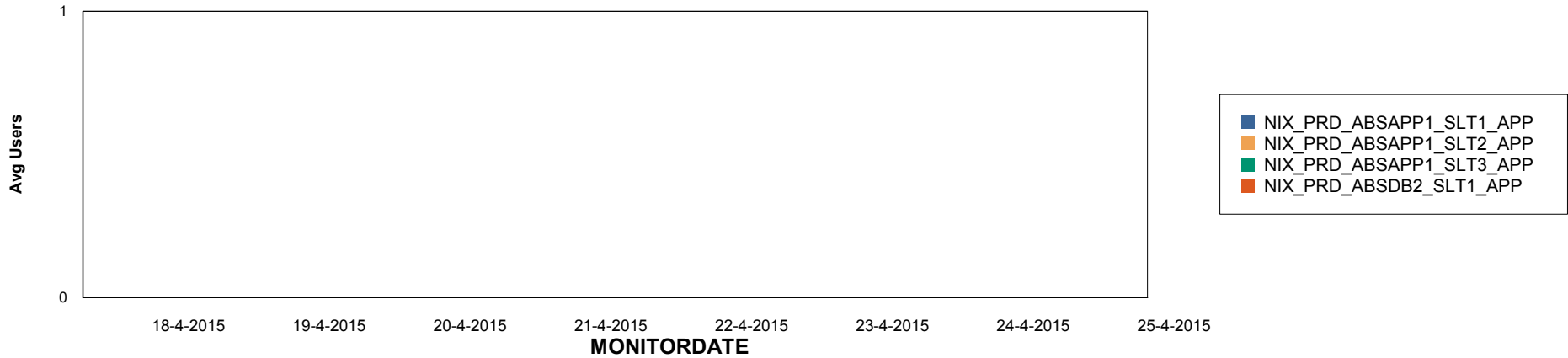
# Weekly SLA Customer Report

Customer NIX\_Production  
Database ID 51

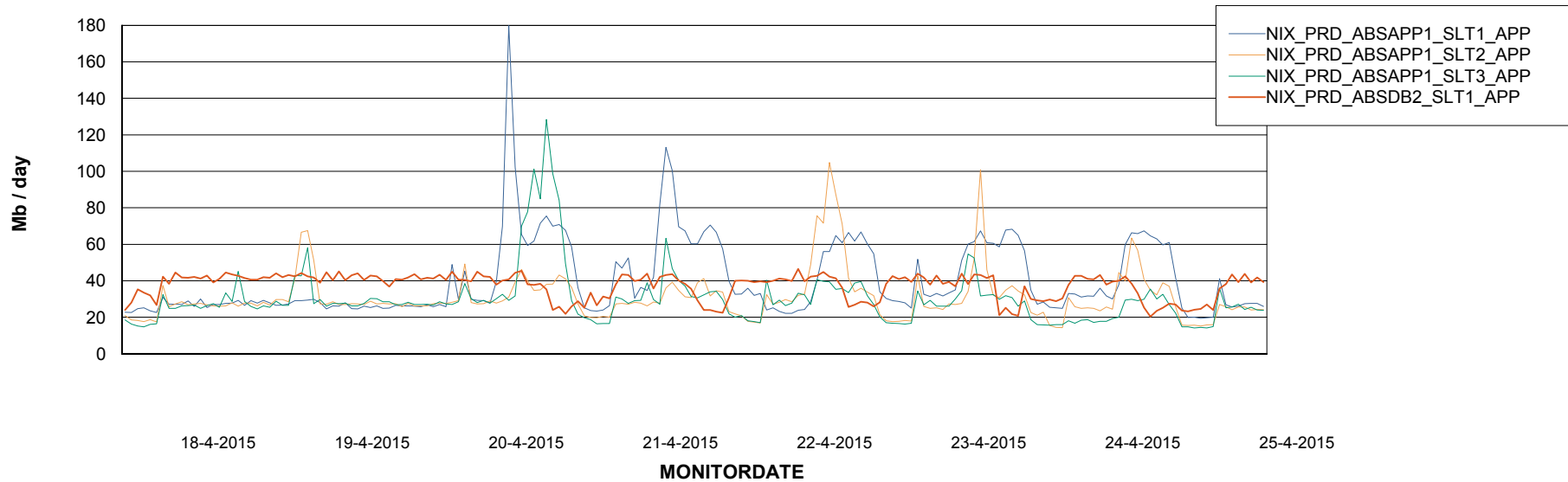


## ABSolute Application Server Services

### Disaster per ABS Server



### Avg memory used per ABS Server Service



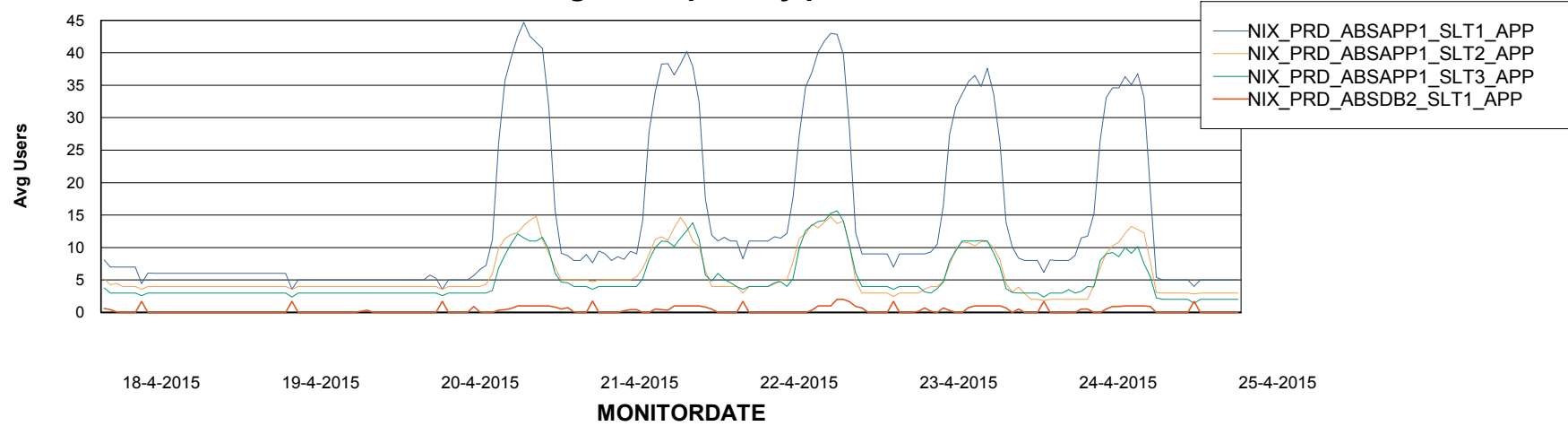
# Weekly SLA Customer Report

Customer NIX\_Production  
Database ID 51



=====  
ABSolute Application Server Services  
=====

### Avg users per day per ABS server



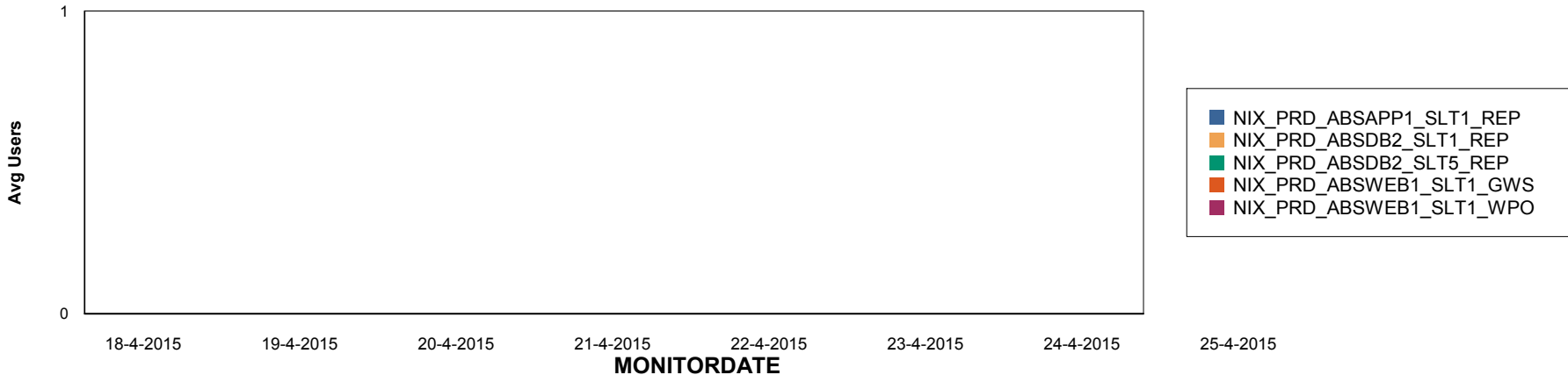
# Weekly SLA Customer Report

Customer NIX\_Production  
Database ID 51

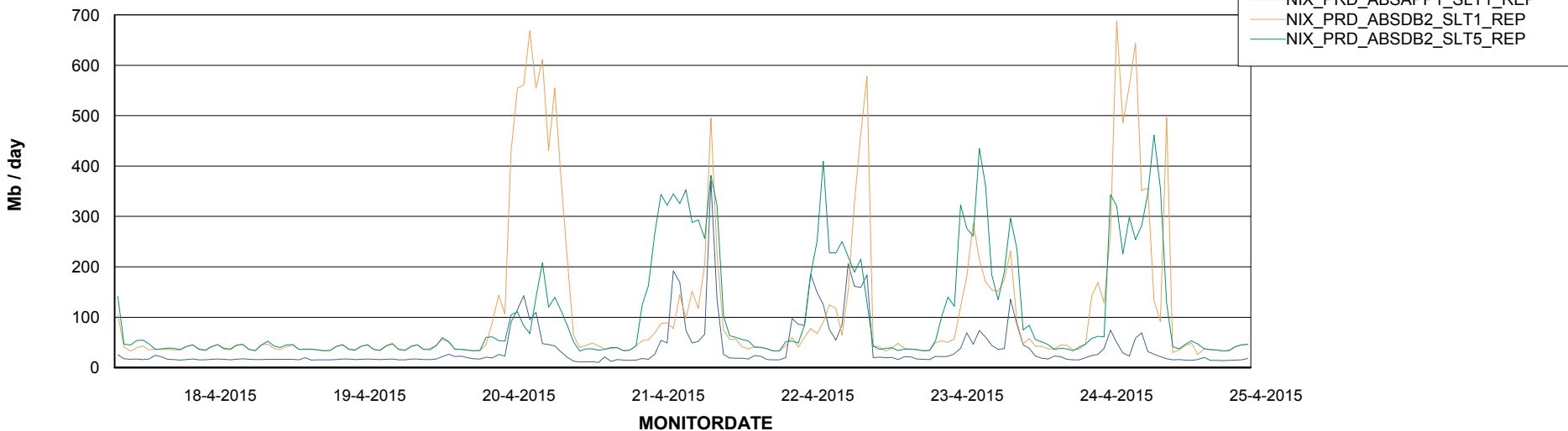


=====  
ABSolute Application ReportServer Services  
=====

## Disaster per ReportServer



## Avg memory used per ReportServer Service



# Weekly SLA Customer Report

Customer NIX\_Production  
Database ID 51



## Disaster per ABS component

