

Weekly SLA Customer Report

Customer JWR Production
 Database ID 43



=====
 HARDDISK USAGE JWR_PRD_JWR-ABS-01
 =====

	Used disk space on / (GB)	Total disk space on / (GB)	Free disk space on / (GB)
25-4-2015	29	49	17
24-4-2015	28	49	18
23-4-2015	28	49	19
22-4-2015	28	49	19
21-4-2015	27	49	19
20-4-2015	27	49	19
19-4-2015	27	49	19

=====
 HARDDISK USAGE JWR_PRD_JWR-ABS-02
 =====

	Used disk space on / (GB)	Total disk space on / (GB)	Free disk space on / (GB)
25-4-2015	29	49	18
24-4-2015	29	49	18
23-4-2015	29	49	18
22-4-2015	29	49	18
21-4-2015	29	49	18
20-4-2015	29	49	18
19-4-2015	29	49	18

Weekly SLA Customer Report

Customer JWR Production
 Database ID 43



=====
 HARDDISK USAGE JWR_PRD_JWR-ODB-01
 =====

	Used disk space on / (GB)	Total disk space on / (GB)	Free disk space on / (GB)
25-4-2015	82	148	59
24-4-2015	82	148	58
23-4-2015	83	148	58
22-4-2015	83	148	58
21-4-2015	83	148	58
20-4-2015	82	148	58
19-4-2015	82	148	59

=====
 HARDDISK USAGE JWR_PRD_JWR-ODB-02
 =====

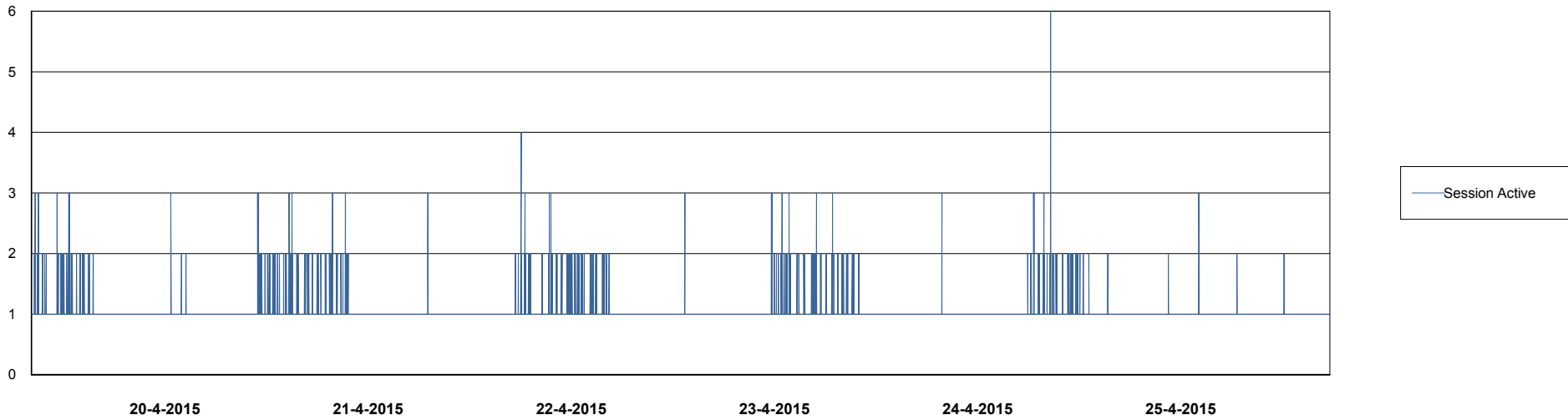
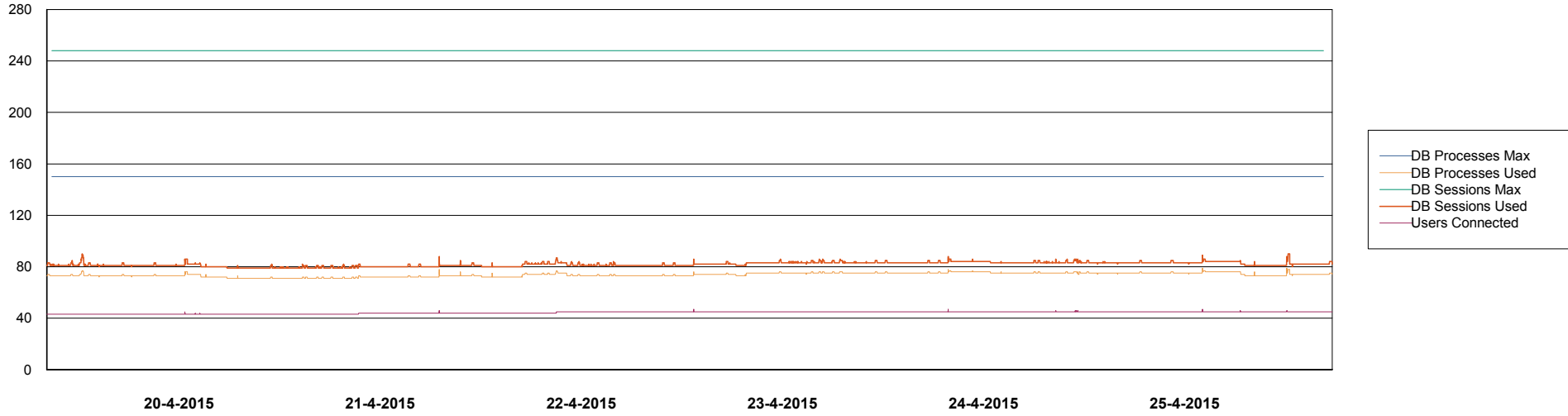
	Used disk space on / (GB)	Total disk space on / (GB)	Free disk space on / (GB)
25-4-2015	92	138	39
24-4-2015	92	138	39
23-4-2015	92	138	39
22-4-2015	93	138	38
21-4-2015	92	138	39
20-4-2015	92	138	39
19-4-2015	91	138	40

Weekly SLA Customer Report

Customer JWR Production
Database ID 43



DATABASE PERFORMANCE JWRDB_Production



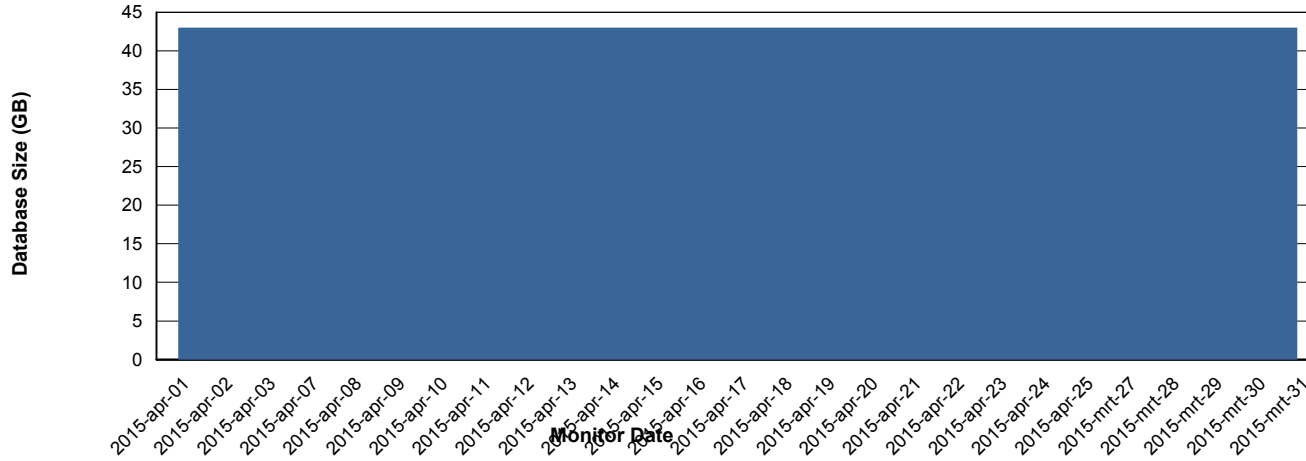
Weekly SLA Customer Report

Customer JWR Production
 Database ID 43



=====
 DATABASE SIZE JWRDB_Production
 =====

Database growth over last month



=====
 DATABASE TABLESPACES JWRDB_Production
 =====

TOTAL DATABASE SIZE PER TABLESPACE

Date	Tablespace Name	Filesize (Gb)	Usedsize (Gb)	Percentage free
25-4-2015	ABSDATA	18	12	33
	INDX	38	30	21
24-4-2015	ABSDATA	18	12	33
	INDX	38	30	21
23-4-2015	ABSDATA	18	12	33
	INDX	38	30	21
22-4-2015	ABSDATA	18	12	33
	INDX	38	30	21
21-4-2015	ABSDATA	18	12	33
	INDX	38	30	21
20-4-2015	ABSDATA	18	12	33
	INDX	38	30	21
19-4-2015	ABSDATA	18	12	33
	INDX	38	30	21

Weekly SLA Customer Report

Customer JWR Production
Database ID 43



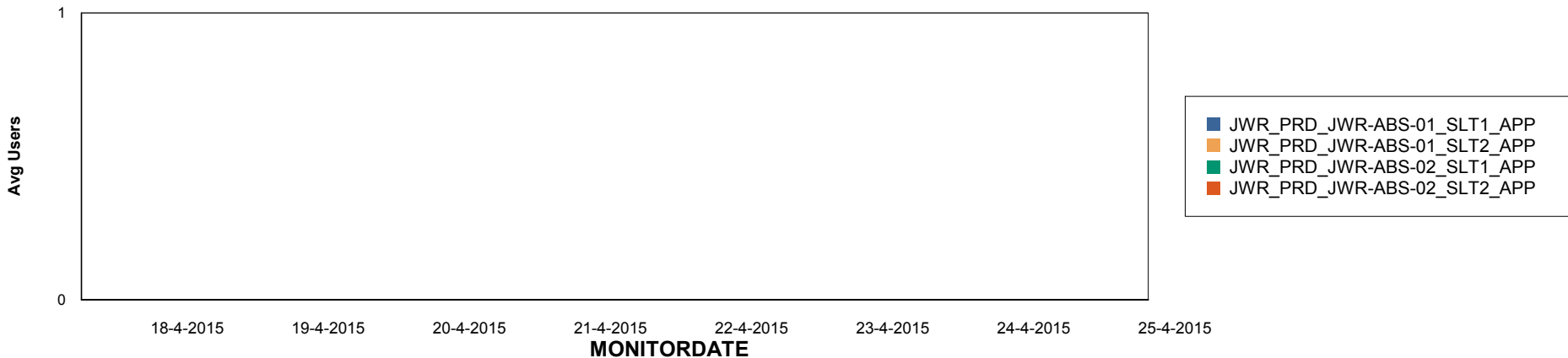
Weekly SLA Customer Report

Customer JWR Production
Database ID 43

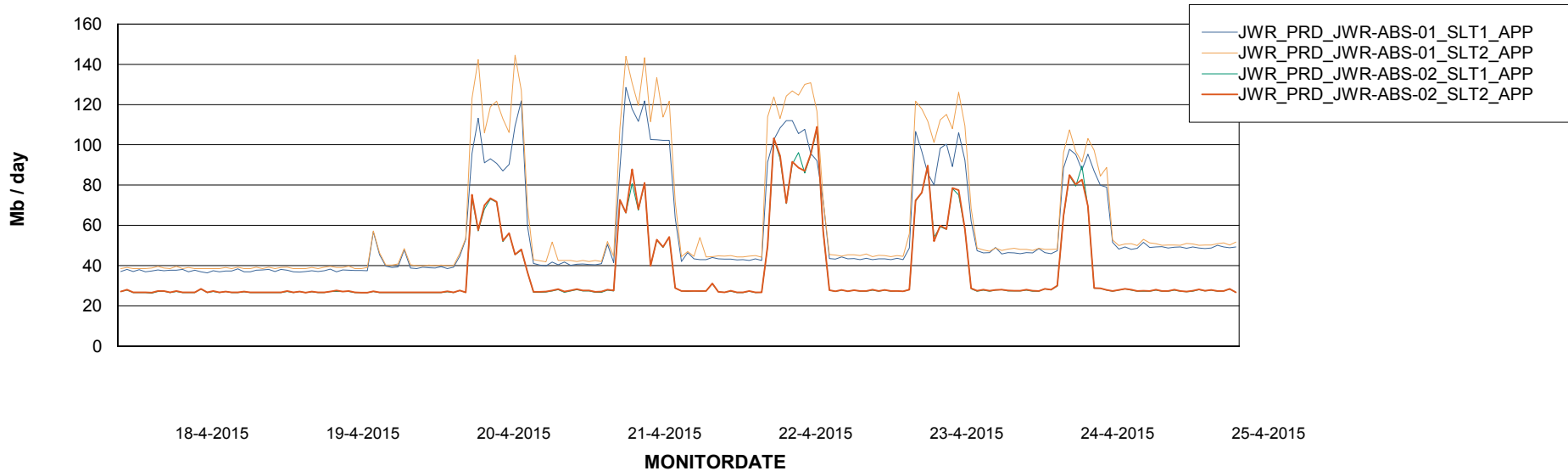


=====
ABSolute Application Server Services
=====

Disaster per ABS Server



Avg memory used per ABS Server Service



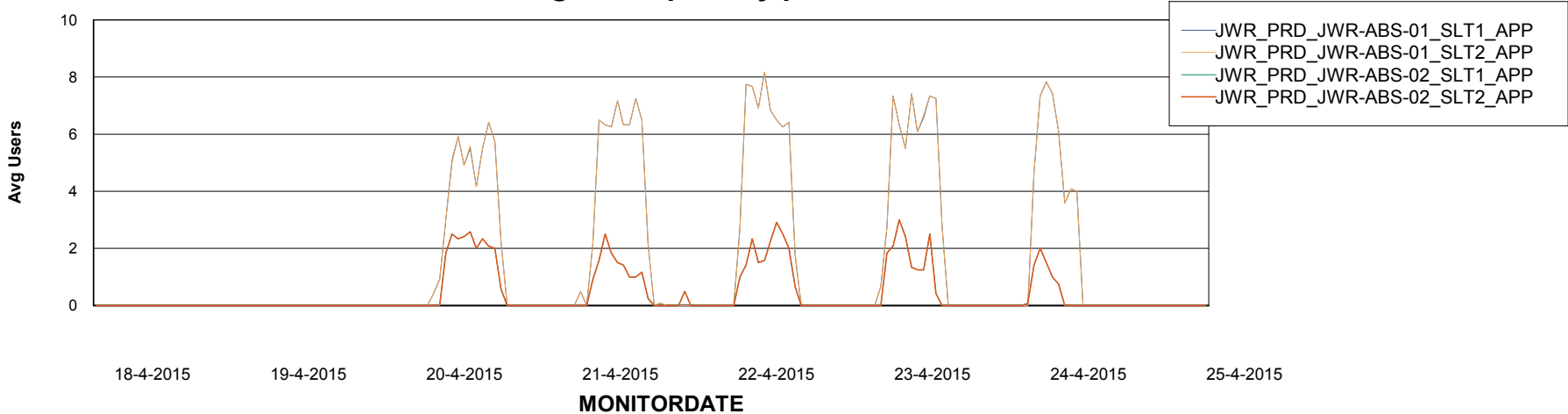
Weekly SLA Customer Report

Customer JWR Production
Database ID 43



=====
ABSolute Application Server Services
=====

Avg users per day per ABS server



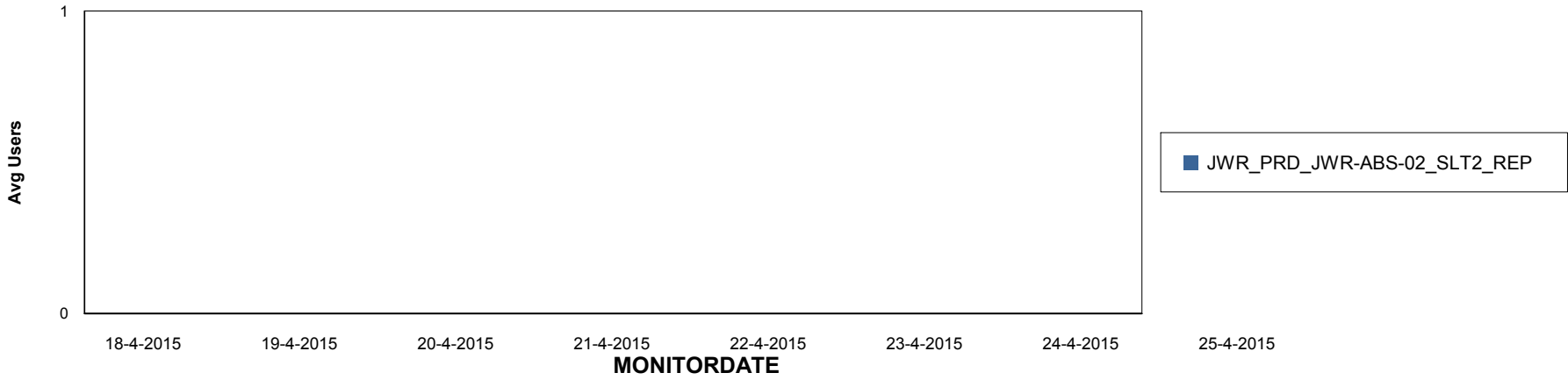
Weekly SLA Customer Report

Customer JWR Production
Database ID 43

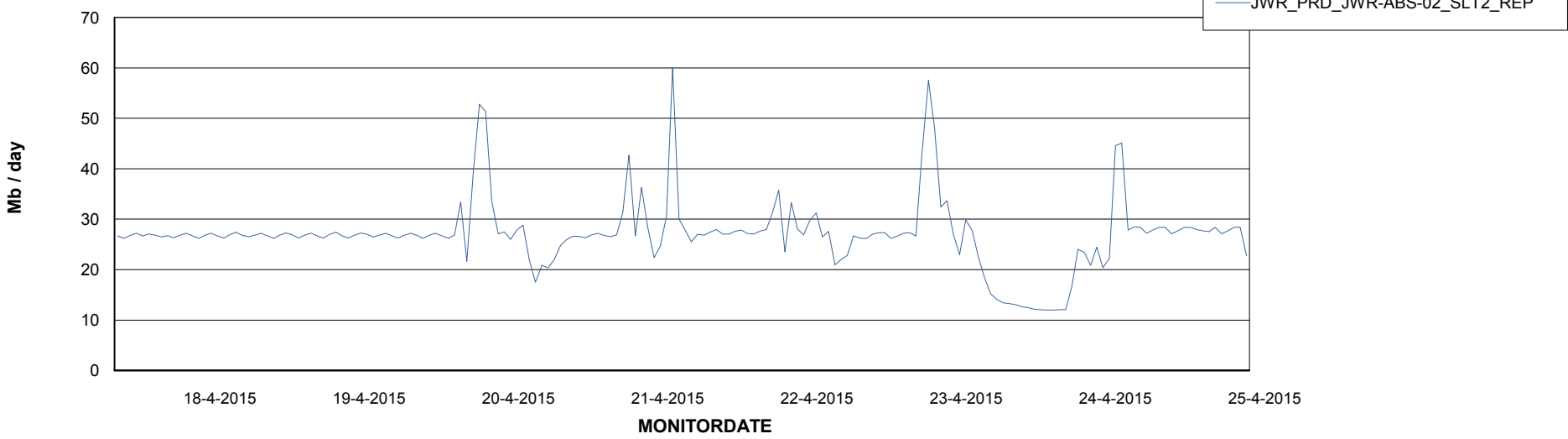


=====
ABSolute Application ReportServer Services
=====

Disaster per ReportServer



Avg memory used per ReportServer Service



Weekly SLA Customer Report

Customer JWR Production
Database ID 43



Disaster per ABS component

