

# Weekly SLA Customer Report

Customer FIS\_Production  
 Database ID 46



=====  
 HARDDISK USAGE FIS\_PRD\_ORACLE1  
 =====

	Total disk space on C (GB)	Free disk space on C (GB)	Total disk space on L (GB)	Free disk space on L (GB)	Total disk space on O (GB)	Free disk space on O (GB)
25-4-2015	279	224	279	227	186	35
24-4-2015	279	224	279	230	186	35
23-4-2015	279	224	279	230	186	35
22-4-2015	279	224	279	230	186	35
21-4-2015	279	224	279	230	186	35
20-4-2015	279	224	279	229	186	35
19-4-2015	279	224	279	230	186	35

=====  
 HARDDISK USAGE FIS\_PRD\_ORACLE2  
 =====

	Total disk space on C (GB)	Free disk space on C (GB)	Total disk space on L (GB)	Free disk space on L (GB)	Total disk space on O (GB)	Free disk space on O (GB)
25-4-2015	279	228	279	148	186	35
24-4-2015	279	228	279	148	186	35
23-4-2015	279	228	279	147	186	35
22-4-2015	279	228	279	147	186	35
21-4-2015	279	228	279	147	186	35
20-4-2015	279	228	279	147	186	35
19-4-2015	279	228	279	148	186	35

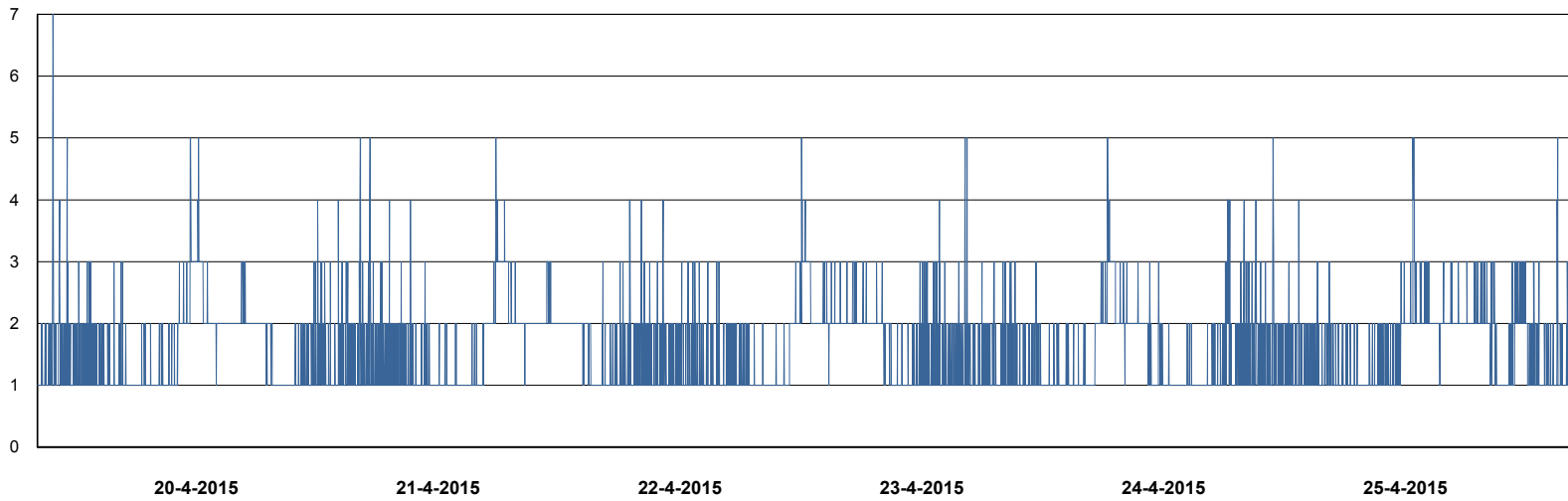
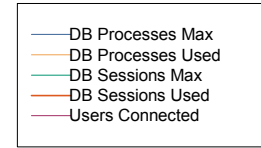
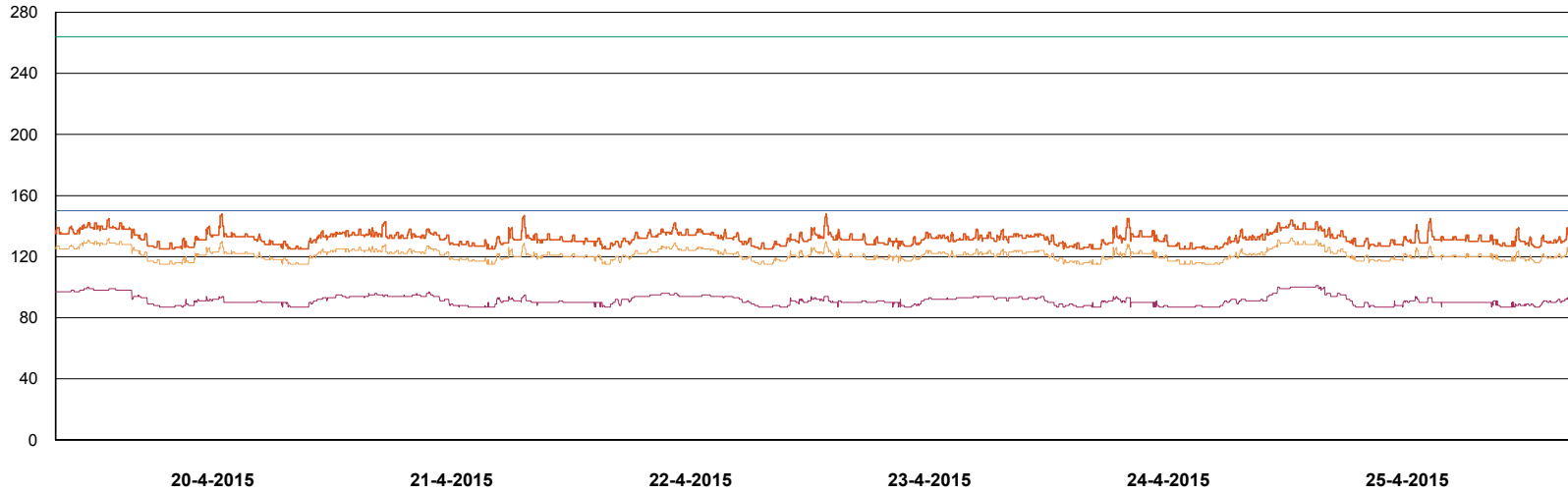
# Weekly SLA Customer Report

Customer FIS\_Production  
Database ID 46



## DATABASE PERFORMANCE

FISDB\_Production

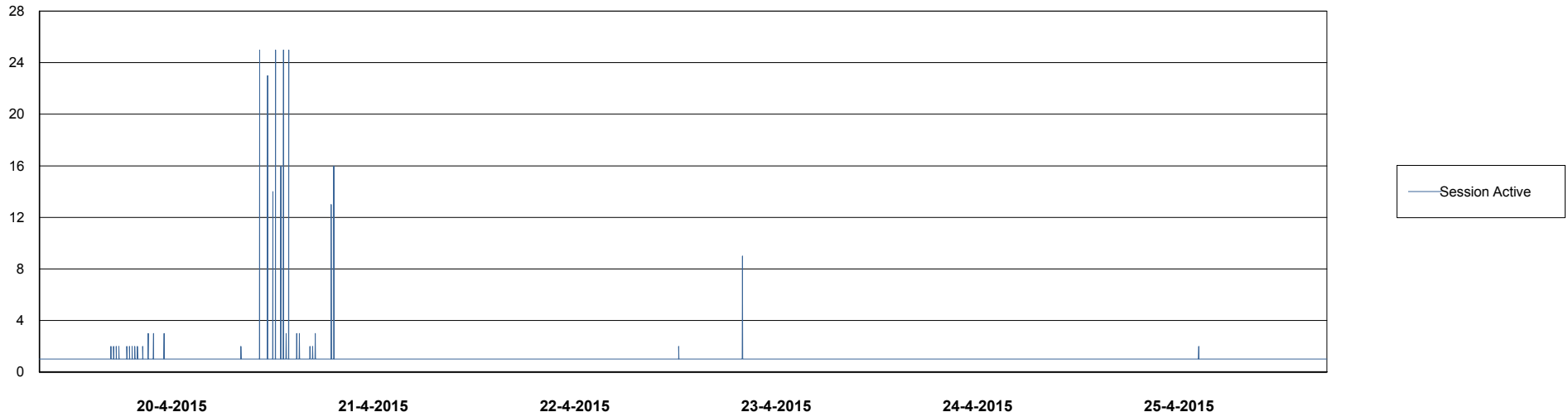
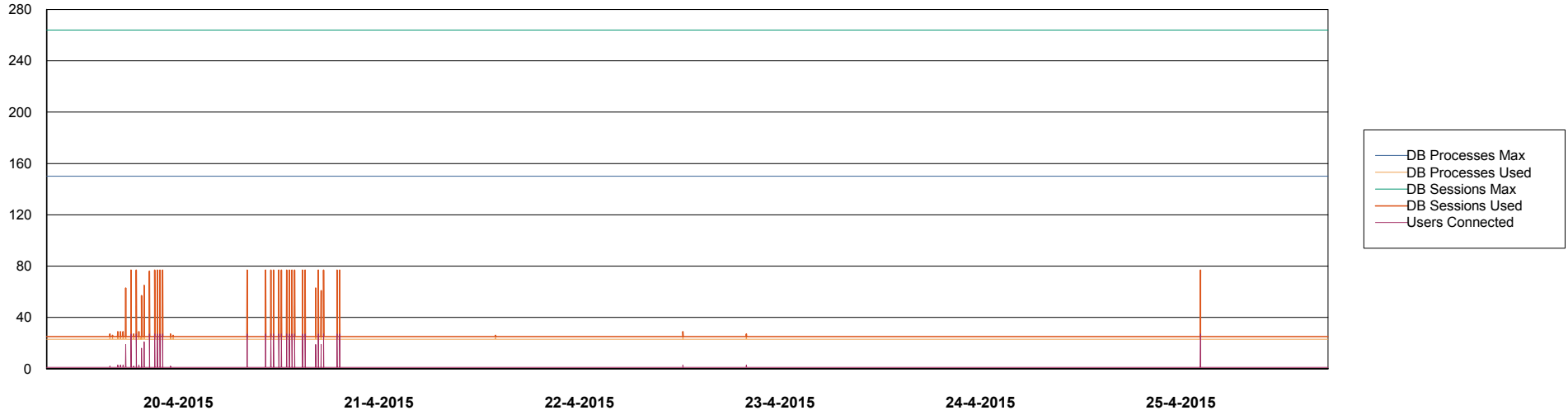


# Weekly SLA Customer Report

Customer FIS\_Production  
Database ID 46



## DATABASE PERFORMANCE FISDB\_Standby



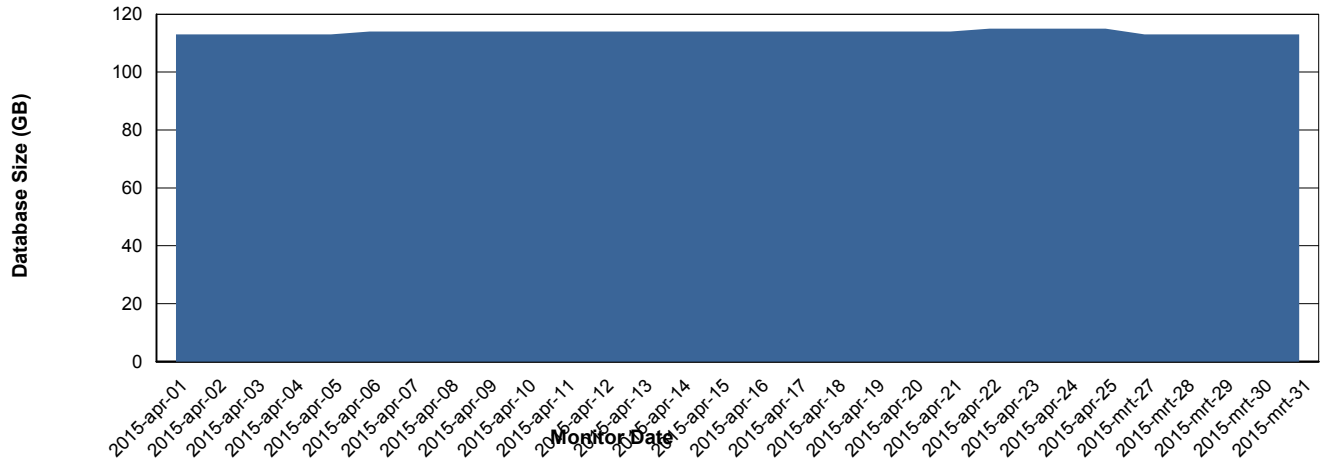
# Weekly SLA Customer Report

Customer FIS\_Production  
 Database ID 46



=====  
 DATABASE SIZE FISDB\_Production  
 =====

## Database growth over last month



=====  
 DATABASE TABLESPACES FISDB\_Production  
 =====

### TOTAL DATABASE SIZE PER TABLESPACE

Date	Tablespace Name	Filesize (Gb)	Usedsize (Gb)	Percentage free
25-4-2015	ABSDATA	62	50	19
	INDX	75	62	17
24-4-2015	ABSDATA	62	50	19
	INDX	75	62	17
23-4-2015	ABSDATA	62	50	19
	INDX	75	62	17
22-4-2015	ABSDATA	62	50	19
	INDX	75	61	19
21-4-2015	ABSDATA	62	50	19
	INDX	75	61	19
20-4-2015	ABSDATA	62	50	19
	INDX	75	61	19
19-4-2015	ABSDATA	62	50	19
	INDX	75	61	19

