

Weekly SLA Customer Report

Customer BOH_Production
 Database ID 55



=====
 HARDDISK USAGE BOH_PRD_ORACLE1
 =====

	Total disk space on C (GB)	Free disk space on C (GB)	Total disk space on D (GB)	Free disk space on D (GB)	Total disk space on E (GB)	Free disk space on E (GB)
25-4-2015	130	48	100	59	170	46
24-4-2015	130	48	100	59	170	46
23-4-2015	130	48	100	59	170	47
22-4-2015	130	48	100	59	170	47
21-4-2015	130	48	100	59	170	45
20-4-2015	130	48	100	59	170	45
19-4-2015	130	48	100	59	170	44

=====
 HARDDISK USAGE BOH_PRD_ORACLE2
 =====

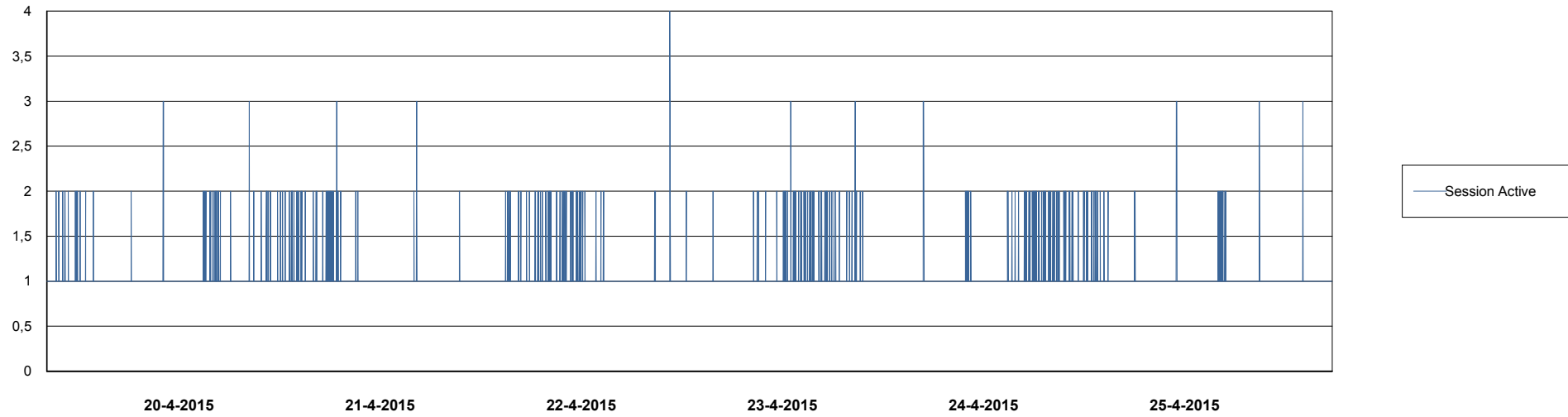
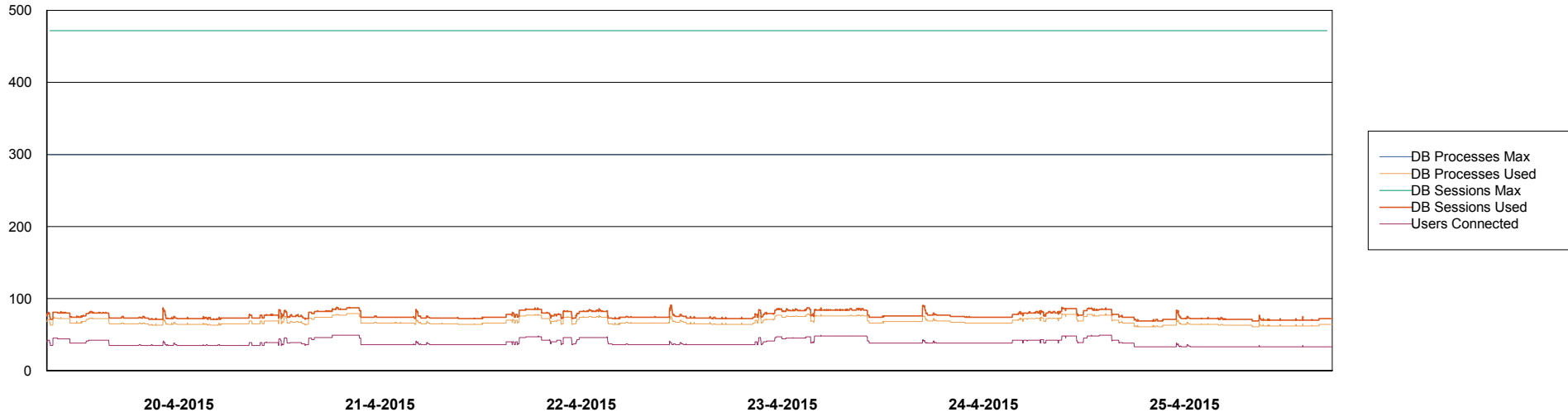
	Total disk space on C (GB)	Free disk space on C (GB)	Total disk space on D (GB)	Free disk space on D (GB)	Total disk space on E (GB)	Free disk space on E (GB)
25-4-2015	67	7	227	183	329	248
24-4-2015	67	7	227	183	329	249
23-4-2015	67	6	227	183	329	250
22-4-2015	67	6	227	183	329	251
21-4-2015	67	6	227	183	329	252
20-4-2015	67	7	227	183	329	254
19-4-2015	67	7	227	183	329	255

Weekly SLA Customer Report

Customer BOH_Production
Database ID 55



DATABASE PERFORMANCE BOHDB_Production

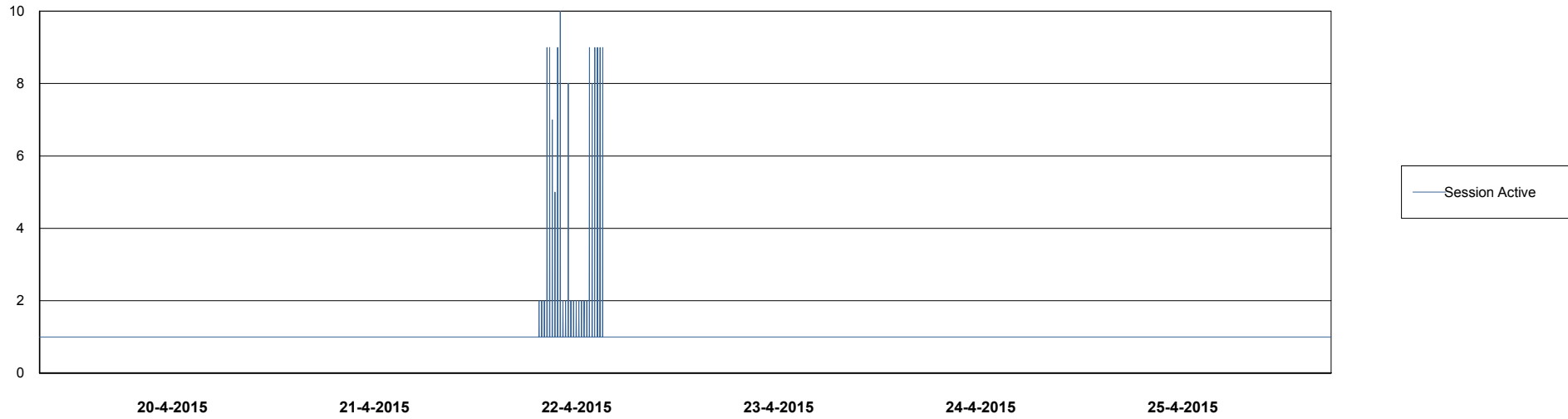
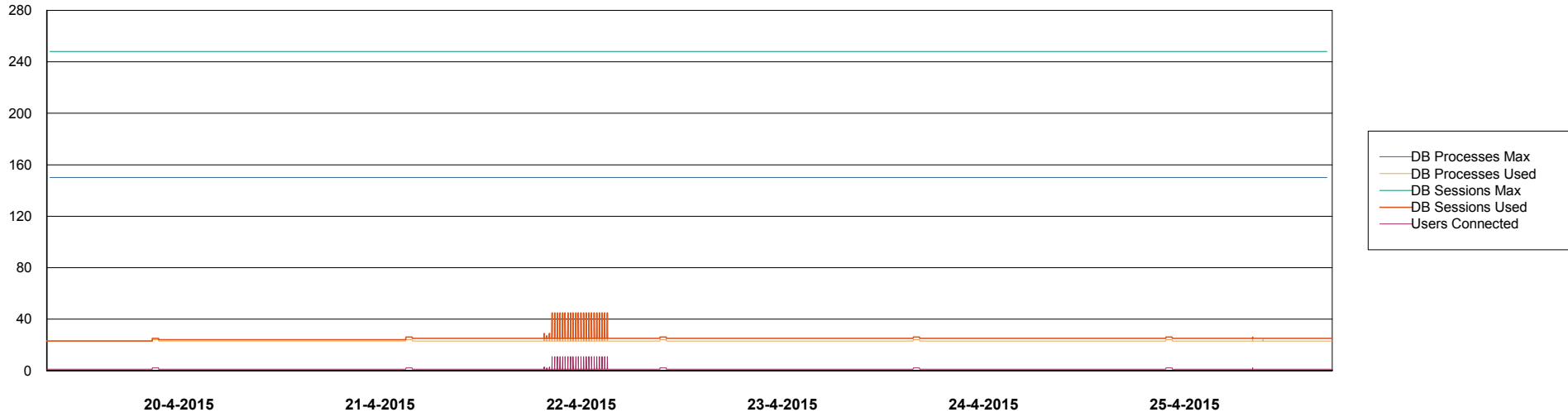


Weekly SLA Customer Report

Customer BOH_Production
Database ID 55



DATABASE PERFORMANCE BOHDB_Standby



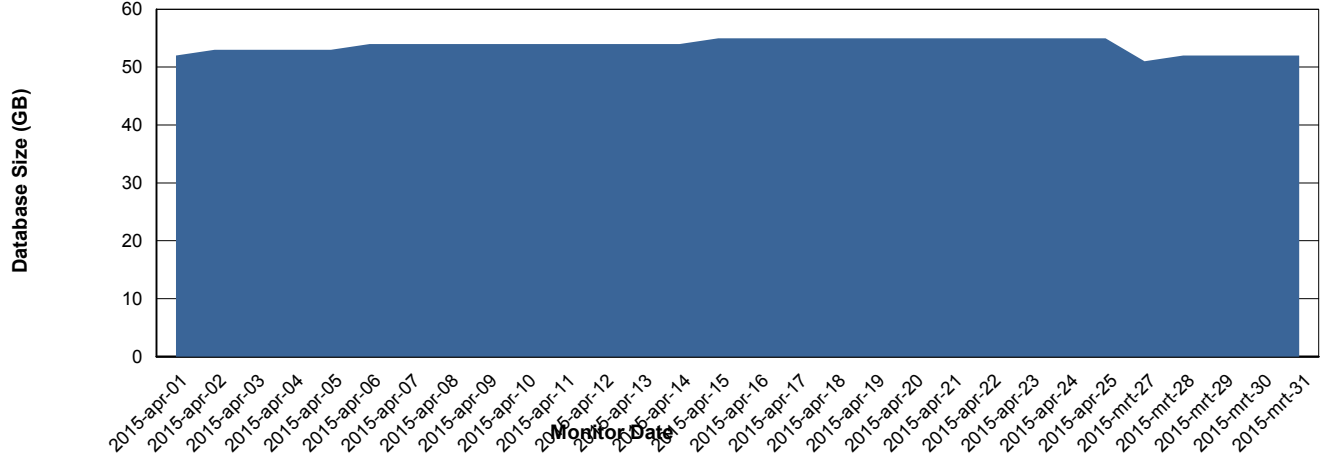
Weekly SLA Customer Report

Customer BOH_Production
 Database ID 55



=====
 DATABASE SIZE BOHDB_Production
 =====

Database growth over last month



=====
 DATABASE TABLESPACES BOHDB_Production
 =====

TOTAL DATABASE SIZE PER TABLESPACE

Date	Tablespace Name	Filesize (Gb)	Usedsize (Gb)	Percentage free
25-4-2015	ABSDATA	28	21	25
	INDX	40	33	18
24-4-2015	ABSDATA	28	21	25
	INDX	40	33	18
23-4-2015	ABSDATA	28	21	25
	INDX	40	33	18
22-4-2015	ABSDATA	28	21	25
	INDX	40	33	18
21-4-2015	ABSDATA	28	21	25
	INDX	40	33	18
20-4-2015	ABSDATA	28	21	25
	INDX	40	33	18
19-4-2015	ABSDATA	28	21	25
	INDX	40	32	20

Weekly SLA Customer Report

Customer BOH_Production
Database ID 55



=====
STANDBY DATABASE HEALTH BOH_Production
=====

Recovery lag for last 7 days

