

Weekly SLA Customer Report

Customer RFL_Production
Database ID 36



=====
HARDDISK USAGE RFL_PRD_ORACLE1
=====

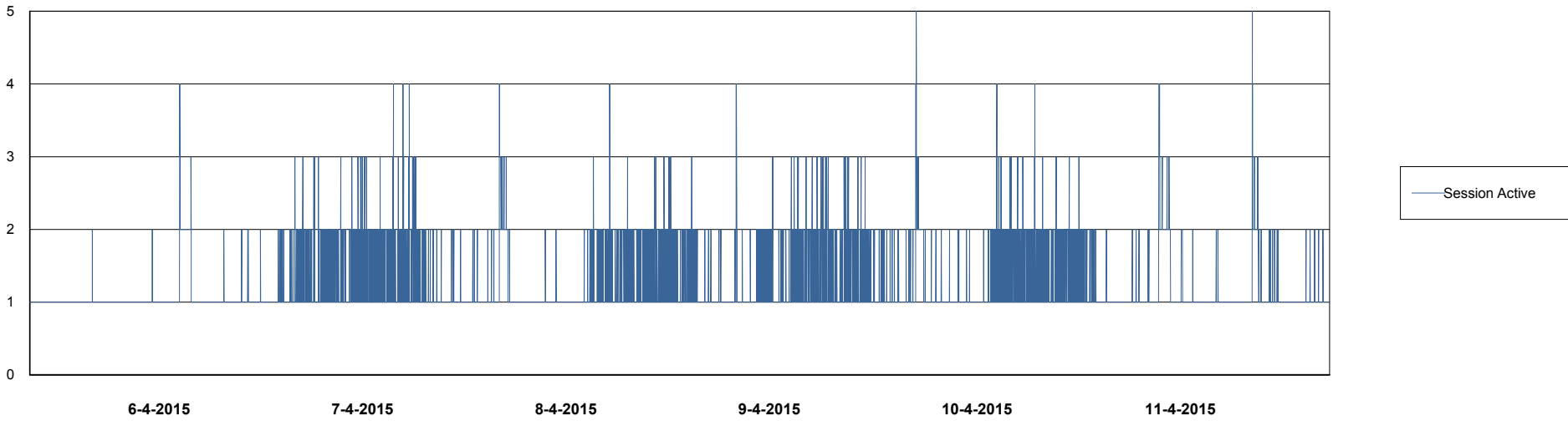
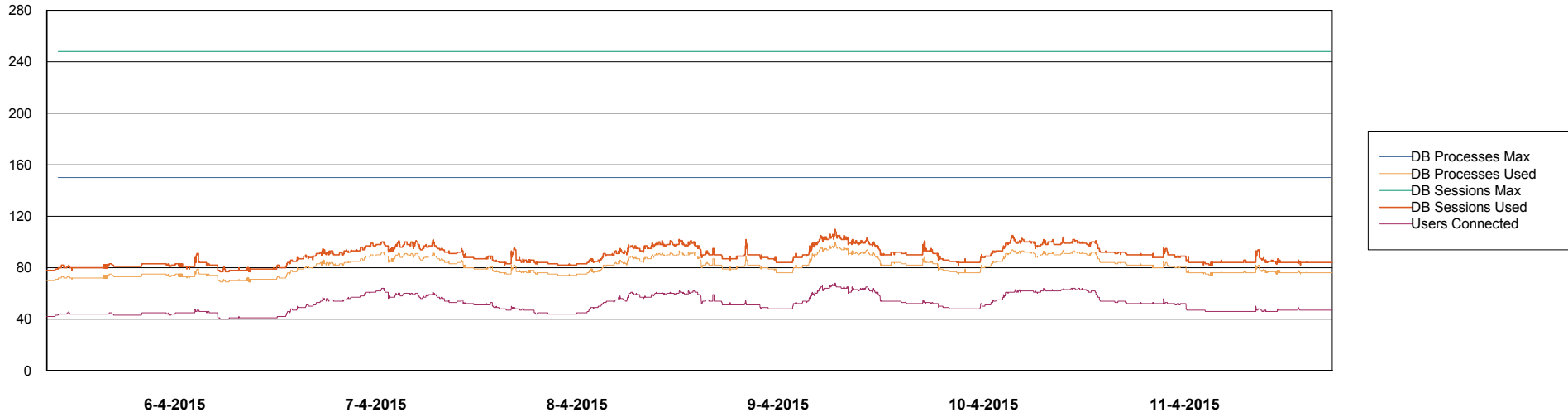
	Total disk space on C (GB)	Free disk space on C (GB)	Total disk space on D (GB)	Free disk space on D (GB)	Total disk space on E (GB)	Free disk space on E (GB)
11-4-2015	279	111	137	93	137	33
10-4-2015	279	111	137	93	137	33
9-4-2015	279	111	137	93	137	34
8-4-2015	279	111	137	93	137	35
7-4-2015	279	111	137	93	137	36
6-4-2015	279	111	137	93	137	36
5-4-2015	279	111	137	93	137	36

Weekly SLA Customer Report

Customer RFL_Production
Database ID 36



DATABASE PERFORMANCE RFLDB_Production

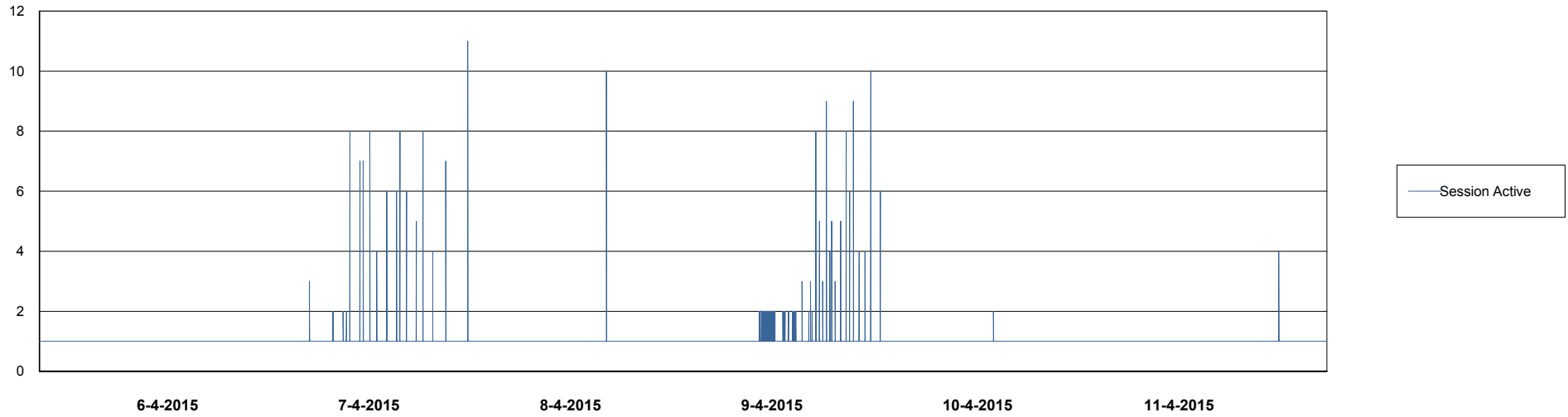
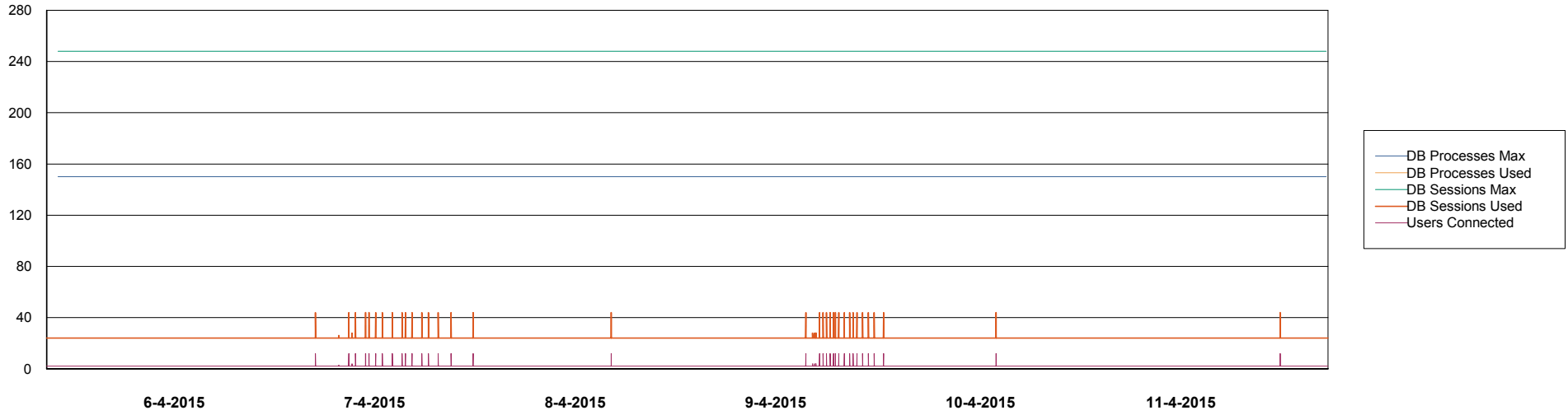


Weekly SLA Customer Report

Customer RFL_Production
Database ID 36



DATABASE PERFORMANCE RFLDB_Standby



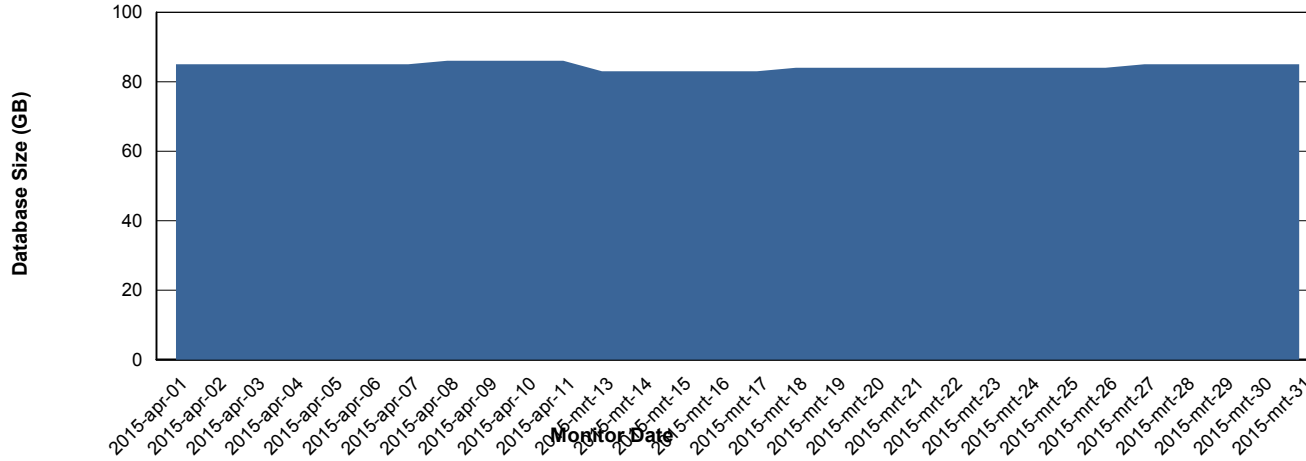
Weekly SLA Customer Report

Customer RFL_Production
 Database ID 36



=====
 DATABASE SIZE RFLDB_Production
 =====

Database growth over last month



=====
 DATABASE TABLESPACES RFLDB_Production
 =====

TOTAL DATABASE SIZE PER TABLESPACE

Date	Tablespace Name	Filesize (Gb)	Usedsize (Gb)	Percentage free
11-4-2015	ABSDATA	28	20	29
	INDX	80	65	19
10-4-2015	ABSDATA	28	20	29
	INDX	80	65	19
9-4-2015	ABSDATA	28	20	29
	INDX	80	65	19
8-4-2015	ABSDATA	28	20	29
	INDX	80	64	20
7-4-2015	ABSDATA	28	20	29
	INDX	80	64	20
6-4-2015	ABSDATA	28	20	29
	INDX	80	64	20
5-4-2015	ABSDATA	28	20	29
	INDX	80	64	20

Weekly SLA Customer Report

Customer RFL_Production
Database ID 36



=====
STANDBY DATABASE HEALTH RFL_Production
=====

Recovery lag for last 7 days

