

Weekly SLA Customer Report

Customer PCO Production
 Database ID 44



=====
 HARDDISK USAGE PCO_PRD_ORACLE1
 =====

	Total disk space on C (GB)	Free disk space on C (GB)	Total disk space on D (GB)	Free disk space on D (GB)
11-4-2015	279	217	838	159
10-4-2015	279	217	838	161
9-4-2015	279	217	838	164
8-4-2015	279	217	838	166
7-4-2015	279	217	838	169
6-4-2015	279	217	838	172
5-4-2015	279	217	838	173

=====
 HARDDISK USAGE PCO_PRD_ORACLE2
 =====

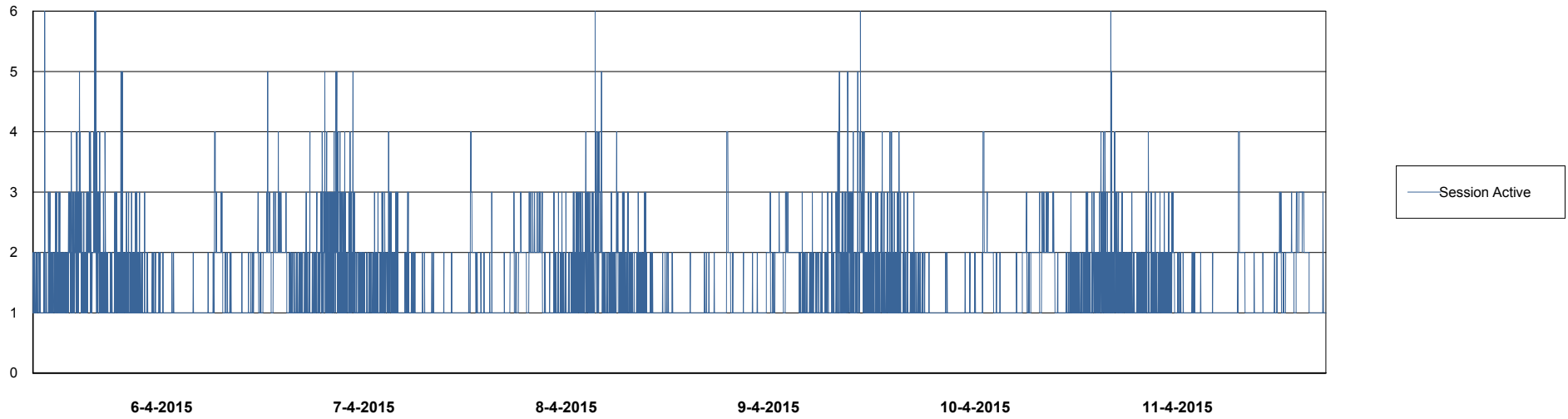
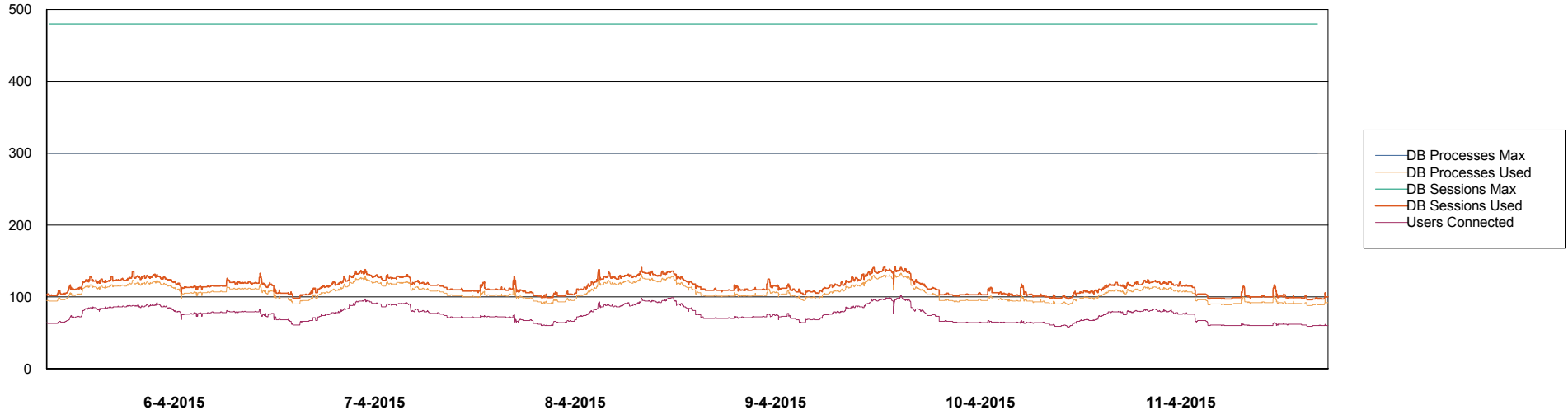
	Total disk space on C (GB)	Free disk space on C (GB)	Total disk space on D (GB)	Free disk space on D (GB)
11-4-2015	279	215	838	461
10-4-2015	279	216	838	463
9-4-2015	279	217	838	466
8-4-2015	279	216	838	468
7-4-2015	279	217	838	471
6-4-2015	279	217	838	474
5-4-2015	279	217	838	475

Weekly SLA Customer Report

Customer PCO Production
Database ID 44



=====
DATABASE PERFORMANCE PCODB_Production
=====

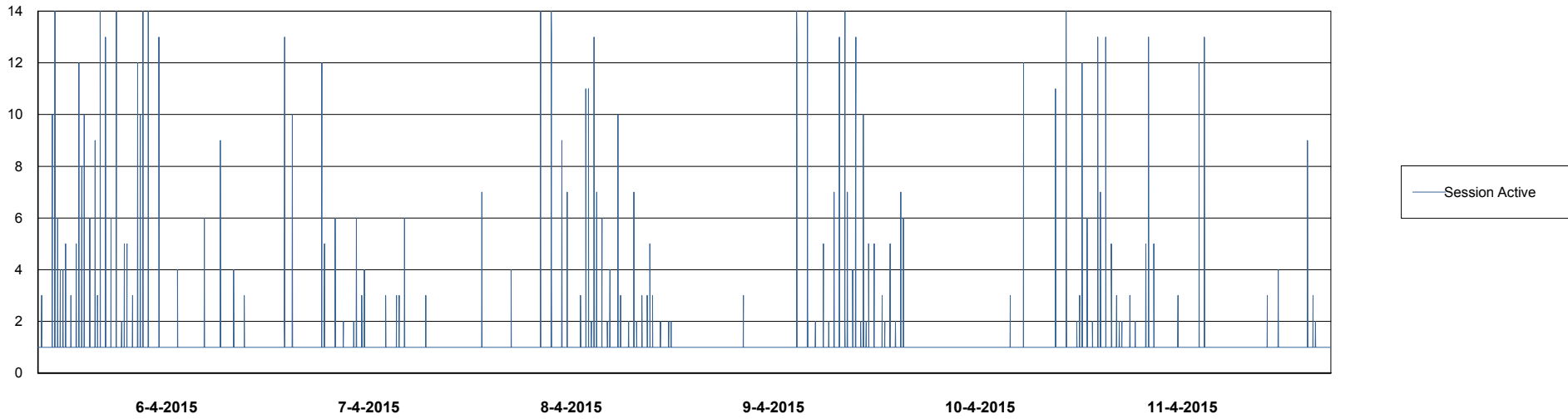
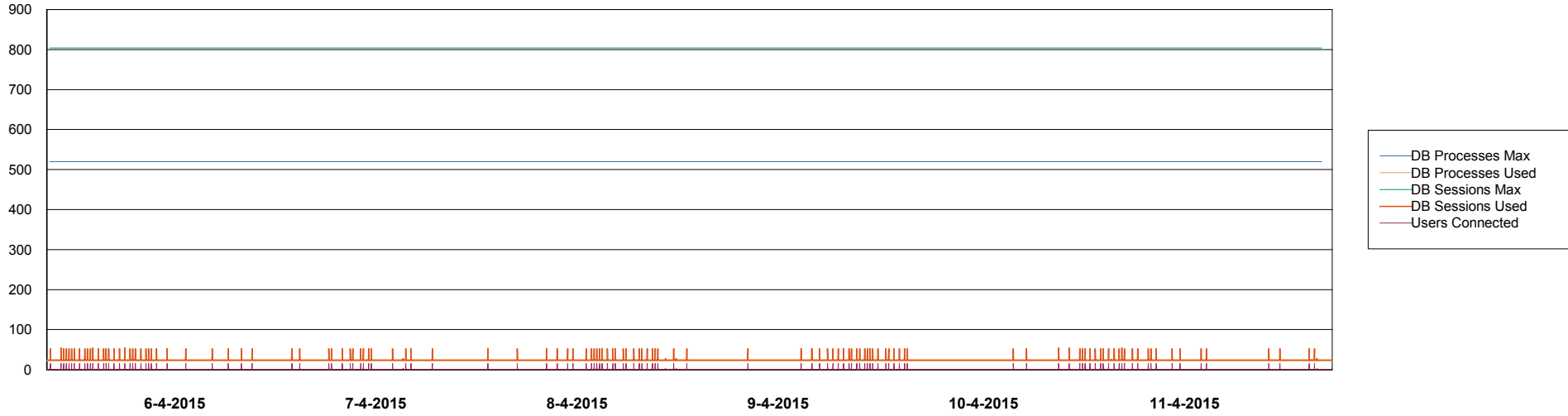


Weekly SLA Customer Report

Customer PCO Production
Database ID 44



DATABASE PERFORMANCE PCODB_Standby



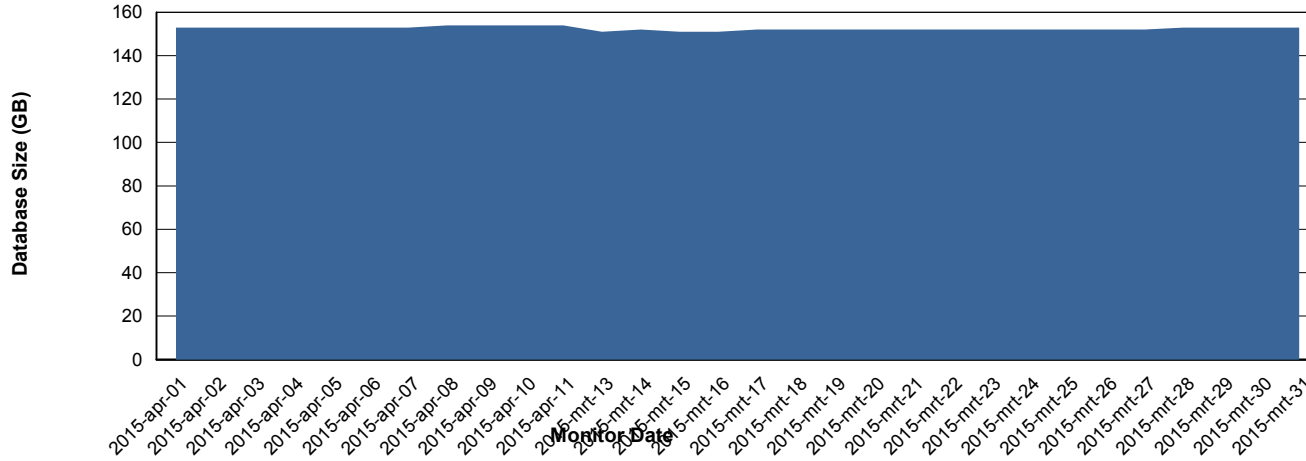
Weekly SLA Customer Report

Customer PCO Production
 Database ID 44



=====
 DATABASE SIZE PCODB_Production
 =====

Database growth over last month



=====
 DATABASE TABLESPACES PCODB_Production
 =====

TOTAL DATABASE SIZE PER TABLESPACE

Date	Tablespace Name	Filesize (Gb)	Usedsize (Gb)	Percentage free
11-4-2015	ABSDATA	78	62	21
	INDX	109	91	17
10-4-2015	ABSDATA	78	62	21
	INDX	109	91	17
9-4-2015	ABSDATA	78	62	21
	INDX	109	90	17
8-4-2015	ABSDATA	78	62	21
	INDX	109	90	17
7-4-2015	ABSDATA	78	62	21
	INDX	109	90	17
6-4-2015	ABSDATA	78	62	21
	INDX	109	90	17
5-4-2015	ABSDATA	78	62	21
	INDX	109	90	17

Weekly SLA Customer Report

Customer PCO Production
Database ID 44



=====
STANDBY DATABASE HEALTH PCO Production
=====

Recovery lag for last 7 days

