

Weekly SLA Customer Report

Customer NIX_Production
Database ID 51



=====
HARDDISK USAGE NIX_PRD_ABSAPP1
=====

	Total disk space on C (GB)	Free disk space on C (GB)
11-4-2015	136	85
10-4-2015	136	85
9-4-2015	136	85
8-4-2015	136	85
7-4-2015	136	85
6-4-2015	136	85
5-4-2015	136	85

=====
HARDDISK USAGE NIX_PRD_ABSAPP2
=====

	Total disk space on C (GB)	Free disk space on C (GB)
11-4-2015	200	184
10-4-2015	200	184
9-4-2015	200	184
8-4-2015	200	184
7-4-2015	200	184
6-4-2015	200	184
5-4-2015	200	184

Weekly SLA Customer Report

Customer NIX_Production
 Database ID 51



=====
 HARDDISK USAGE NIX_PRD_ABSAPP3
 =====

	Total disk space on C (GB)	Free disk space on C (GB)
11-4-2015	200	183
10-4-2015	200	183
9-4-2015	200	183
8-4-2015	200	183
7-4-2015	200	183
6-4-2015	200	183
5-4-2015	200	183

=====
 HARDDISK USAGE NIX_PRD_ABSWEB1
 =====

	Total disk space on C (GB)	Free disk space on C (GB)	Total disk space on D (GB)
11-4-2015	930	723	3
10-4-2015	930	723	3
9-4-2015	930	723	3
8-4-2015	930	723	3
7-4-2015	930	724	3
6-4-2015	930	724	3
5-4-2015	930	724	3

Weekly SLA Customer Report

Customer NIX_Production
 Database ID 51



=====
 HARDDISK USAGE NIX_PRD_ORACLE_BI01
 =====

	Total disk space on C (GB)	Free disk space on C (GB)	Total disk space on E (GB)	Free disk space on E (GB)	Total disk space on F (GB)	Free disk space on F (GB)	Total disk space on G (GB)	Free disk space on G (GB)
11-4-2015	279	210	558	489	558	458	279	241
10-4-2015	279	210	558	489	558	458	279	241
9-4-2015	279	210	558	489	558	458	279	241
8-4-2015	279	210	558	489	558	458	279	241
7-4-2015	279	210	558	490	558	458	279	242

=====
 HARDDISK USAGE NIX_PRD_ORACLE_BI1
 =====

	Total disk space on C (GB)	Free disk space on C (GB)	Total disk space on D (GB)	Free disk space on D (GB)	Total disk space on E (GB)	Free disk space on E (GB)
11-4-2015	139	88	279	169	99	33
10-4-2015	139	88	279	169	99	33
9-4-2015	139	88	279	169	99	33
8-4-2015	139	88	279	169	99	33
7-4-2015	139	88	279	169	99	33
6-4-2015	139	88	279	169	99	33
5-4-2015	139	88	279	169	99	33

=====
 HARDDISK USAGE NIX_PRD_ORCDB1
 =====

Weekly SLA Customer Report

Customer NIX_Production
 Database ID 51



	Total disk space on C (GB)	Free disk space on C (GB)	Total disk space on D (GB)	Free disk space on D (GB)	Total disk space on E (GB)	Free disk space on E (GB)
11-4-2015	136	67	136	27	136	46
10-4-2015	136	67	136	27	136	49
9-4-2015	136	67	136	27	136	51
8-4-2015	136	67	136	27	136	52
7-4-2015	136	67	136	27	136	46
6-4-2015	136	67	136	27	136	34
5-4-2015	136	67	136	27	136	34

=====
 HARDDISK USAGE NIX_PRD_ORCDB2
 =====

	Total disk space on C (GB)	Free disk space on C (GB)	Total disk space on D (GB)	Free disk space on D (GB)	Total disk space on E (GB)	Free disk space on E (GB)
11-4-2015	279	61	279	43	279	148
10-4-2015	279	61	279	43	279	146
9-4-2015	279	61	279	43	279	142
8-4-2015	279	61	279	43	279	139
7-4-2015	279	61	279	43	279	139
6-4-2015	279	61	279	43	279	141
5-4-2015	279	61	279	43	279	144

=====
 HARDDISK USAGE NIX_PRD_ORCDB3
 =====

Weekly SLA Customer Report

Customer NIX_Production
 Database ID 51



	Total disk space on C (GB)	Free disk space on C (GB)	Total disk space on E (GB)	Free disk space on E (GB)	Total disk space on F (GB)	Free disk space on F (GB)	Total disk space on G (GB)	Free disk space on G (GB)
7-4-2015	279	176	558	451	558	360	279	174
6-4-2015	279	176	558	451	558	360	279	174
5-4-2015	279	176	558	451	558	360	279	174

=====
 HARDDISK USAGE NIX_PRD_ORCDB4
 =====

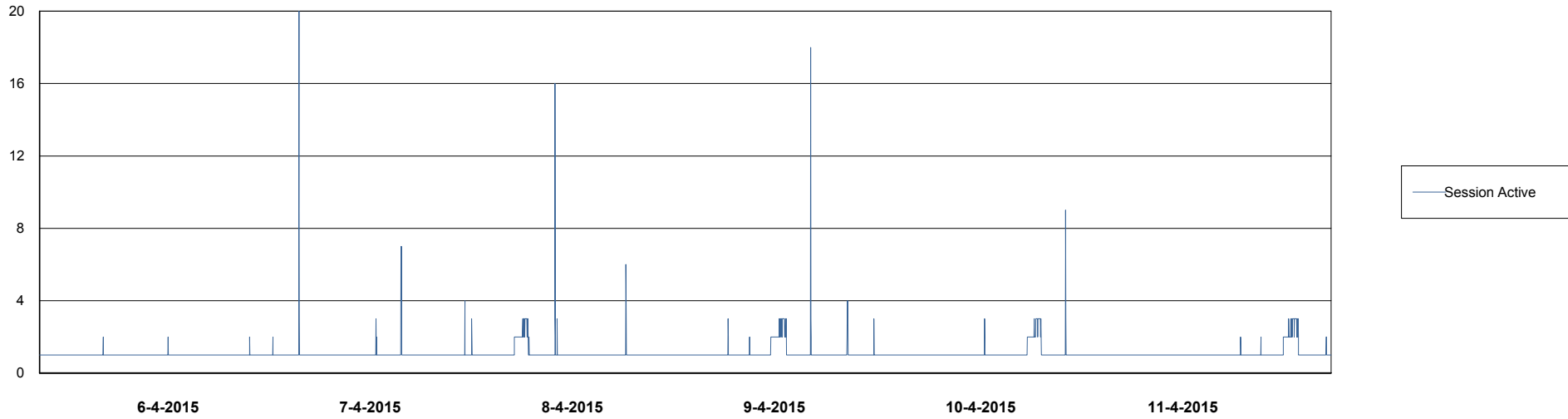
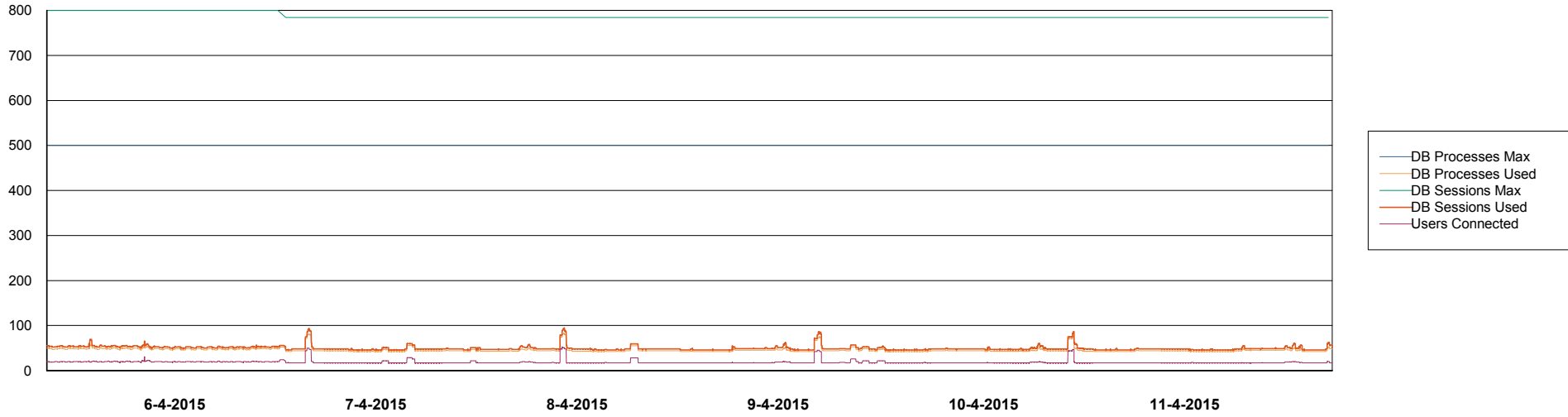
	Total disk space on C (GB)	Free disk space on C (GB)	Total disk space on D (GB)	Total disk space on E (GB)	Free disk space on E (GB)	Total disk space on F (GB)	Free disk space on F (GB)	Total disk space on G (GB)	Free disk space on G (GB)
7-4-2015	279	242	4	558	500	558	458	279	278
6-4-2015	279	242	4	558	500	558	458	279	278
5-4-2015	279	242	4	558	500	558	458	279	278

Weekly SLA Customer Report

Customer NIX_Production
Database ID 51



DATABASE PERFORMANCE NIXDB_BI



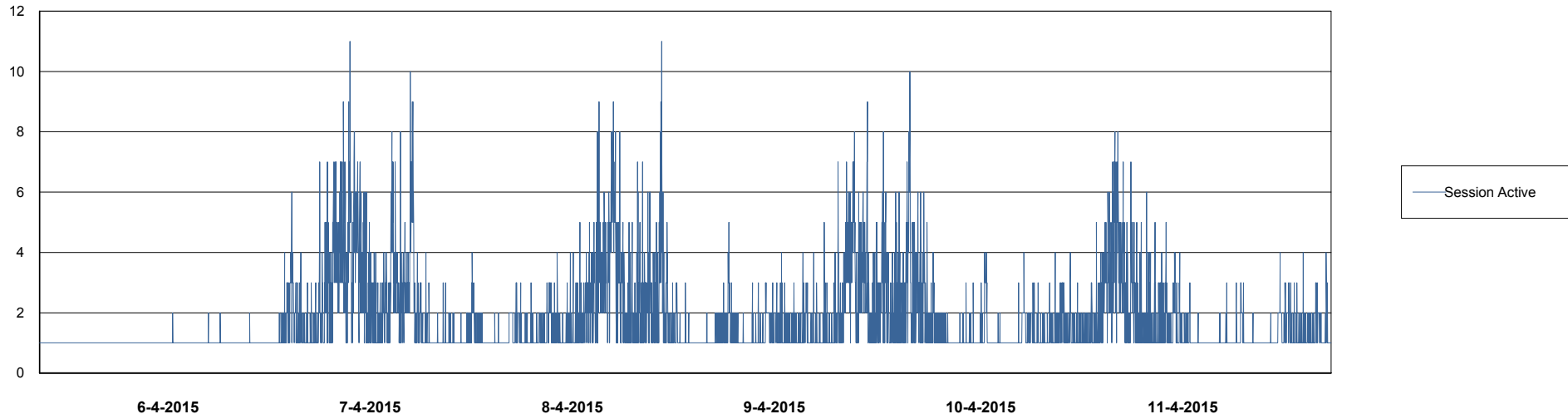
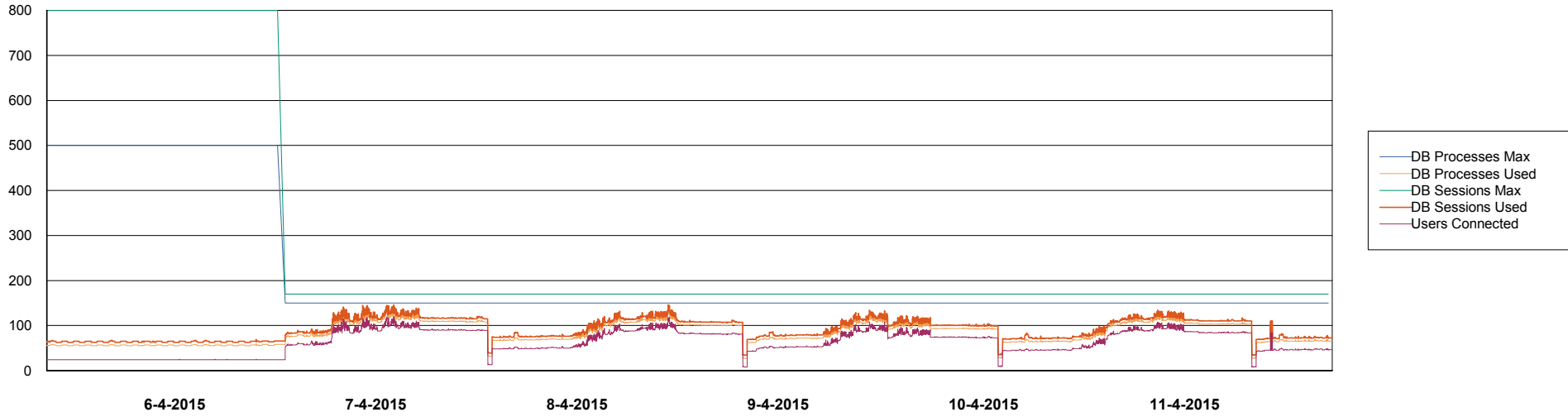
Weekly SLA Customer Report

Customer NIX_Production
Database ID 51



DATABASE PERFORMANCE

NIXDB_Production

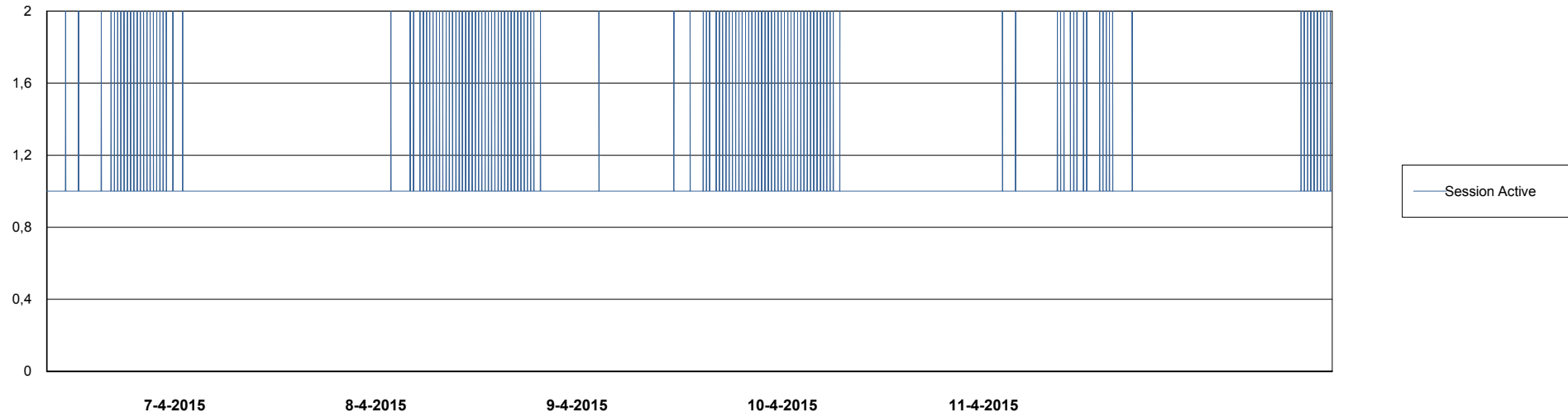
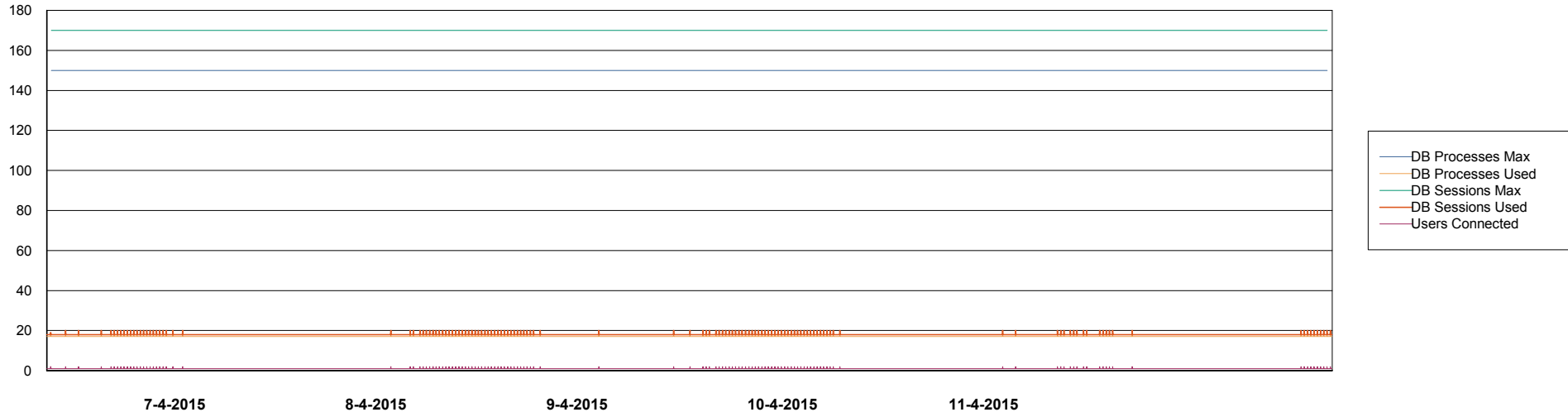


Weekly SLA Customer Report

Customer NIX_Production
Database ID 51



DATABASE PERFORMANCE NIXDB_Standby



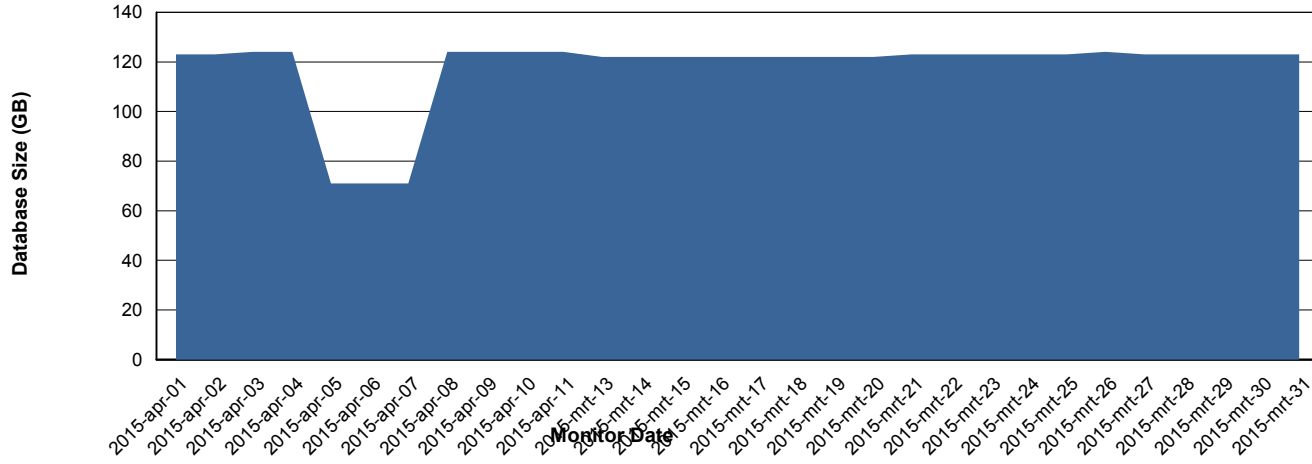
Weekly SLA Customer Report

Customer NIX_Production
Database ID 51



=====
DATABASE SIZE NIXDB_Production
=====
=====

Database growth over last month



Weekly SLA Customer Report

Customer NIX_Production
Database ID 51



=====
DATABASE TABLESPACES NIXDB_BI
=====

TOTAL DATABASE SIZE PER TABLESPACE

Date	Tablespace Name	Filesize (Gb)	Usedsize (Gb)	Percentage free
11-4-2015	ABSDATA	28	20	29
	INDX	44	32	27
10-4-2015	ABSDATA	28	20	29
	INDX	44	32	27
9-4-2015	ABSDATA	28	20	29
	INDX	44	32	27
8-4-2015	ABSDATA	28	20	29
	INDX	44	32	27
7-4-2015	ABSDATA	50	20	60
	INDX	100	32	68
6-4-2015	ABSDATA	50	20	60
	INDX	100	22	78
5-4-2015	ABSDATA	50	20	60
	INDX	100	22	78

Weekly SLA Customer Report

Customer NIX_Production
 Database ID 51



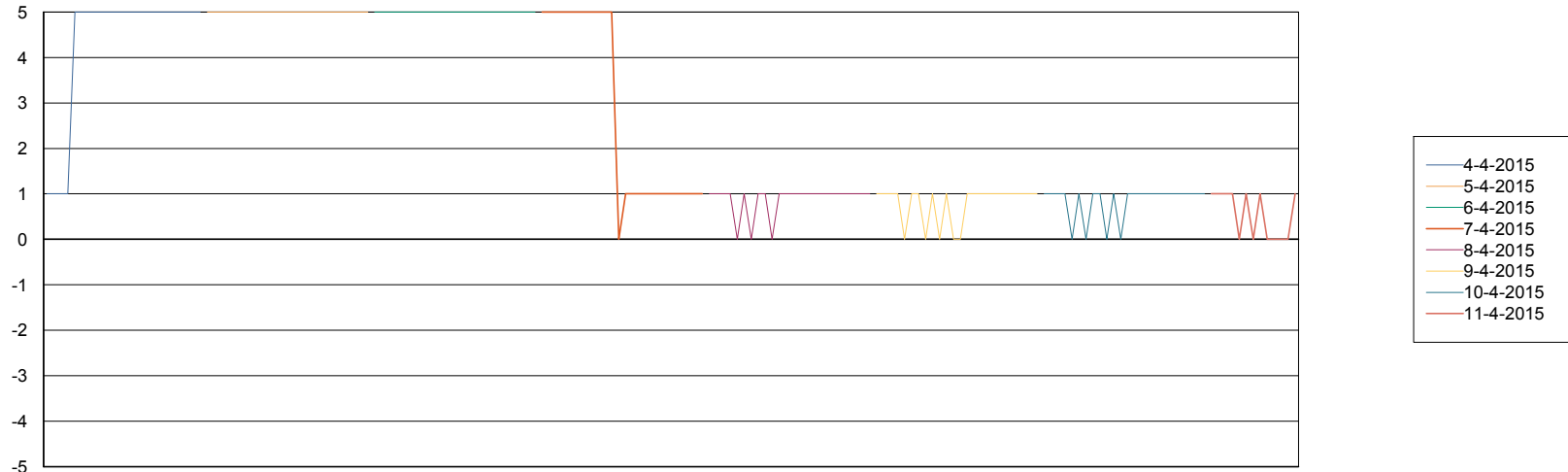
=====
 DATABASE TABLESPACES NIXDB_Production
 =====

TOTAL DATABASE SIZE PER TABLESPACE

Date	Tablespace Name	Filesize (Gb)	Usedsize (Gb)	Percentage free
11-4-2015	ABSDATA	40	32	20
	INDX	109	90	17
10-4-2015	ABSDATA	40	32	20
	INDX	109	90	17
9-4-2015	ABSDATA	40	32	20
	INDX	109	89	18
8-4-2015	ABSDATA	40	32	20
	INDX	109	89	18
7-4-2015	ABSDATA	50	32	36
	INDX	109	89	18
6-4-2015	ABSDATA	50	28	44
	INDX	100	42	58
5-4-2015	ABSDATA	50	28	44
	INDX	100	42	58

=====
 STANDBY DATABASE HEALTH NIX_Production
 =====

Recovery lag for last 7 days



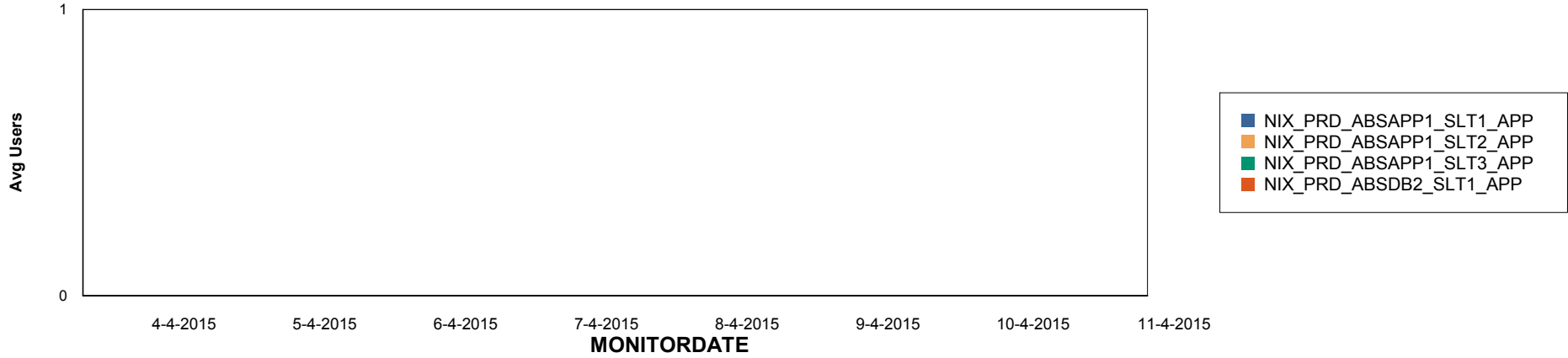
Weekly SLA Customer Report

Customer NIX_Production
Database ID 51

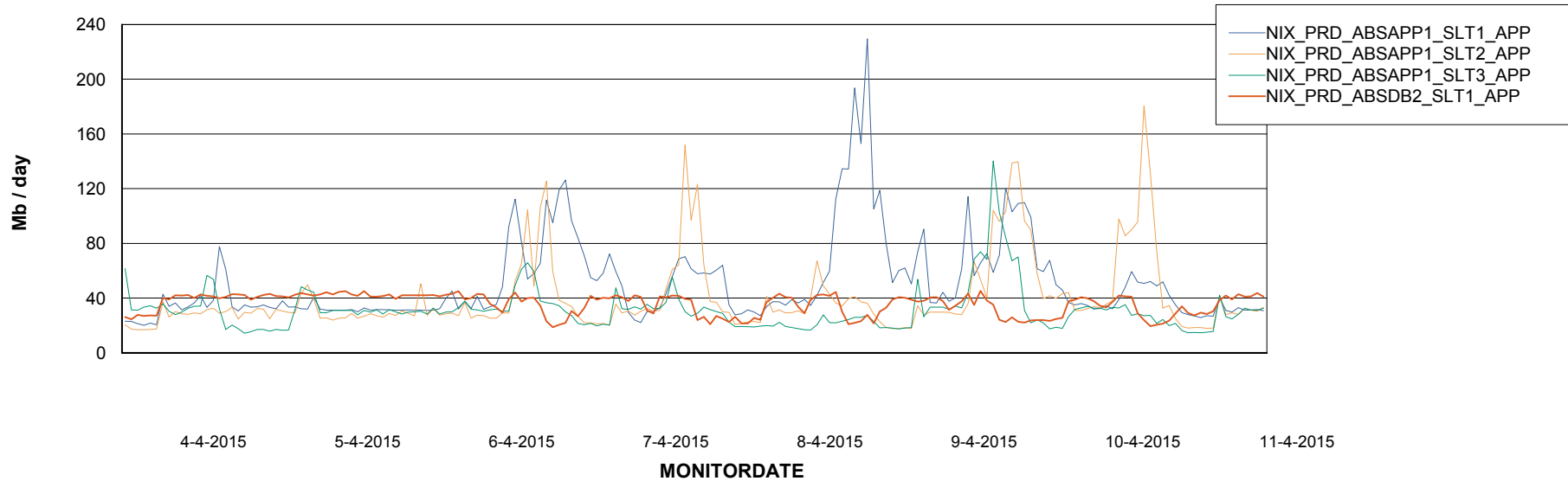


ABSolute Application Server Services

Disaster per ABS Server



Avg memory used per ABS Server Service



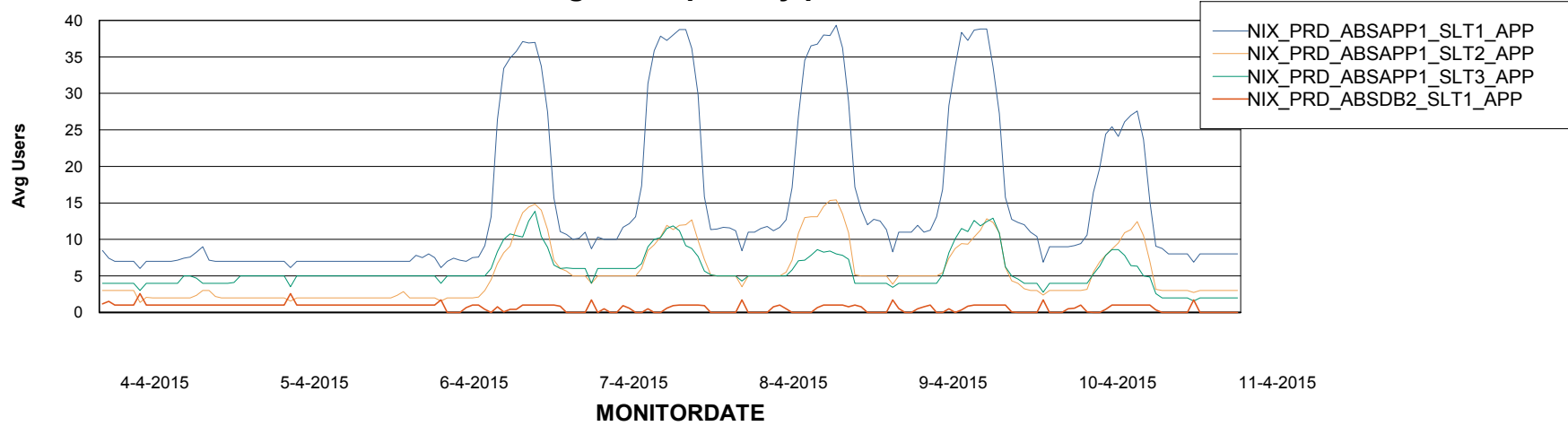
Weekly SLA Customer Report

Customer NIX_Production
Database ID 51



=====
ABSolute Application Server Services
=====

Avg users per day per ABS server



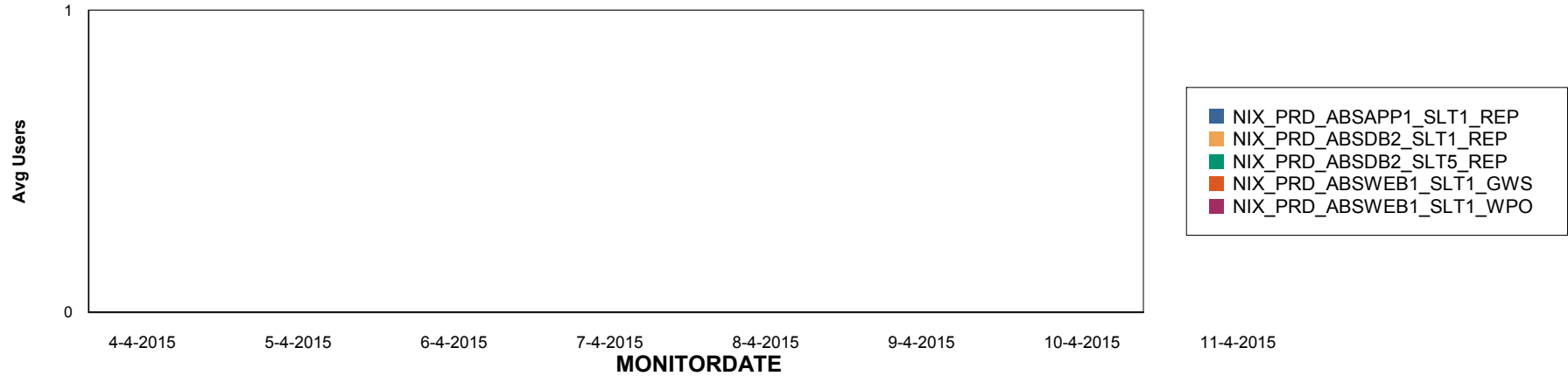
Weekly SLA Customer Report

Customer NIX_Production
Database ID 51

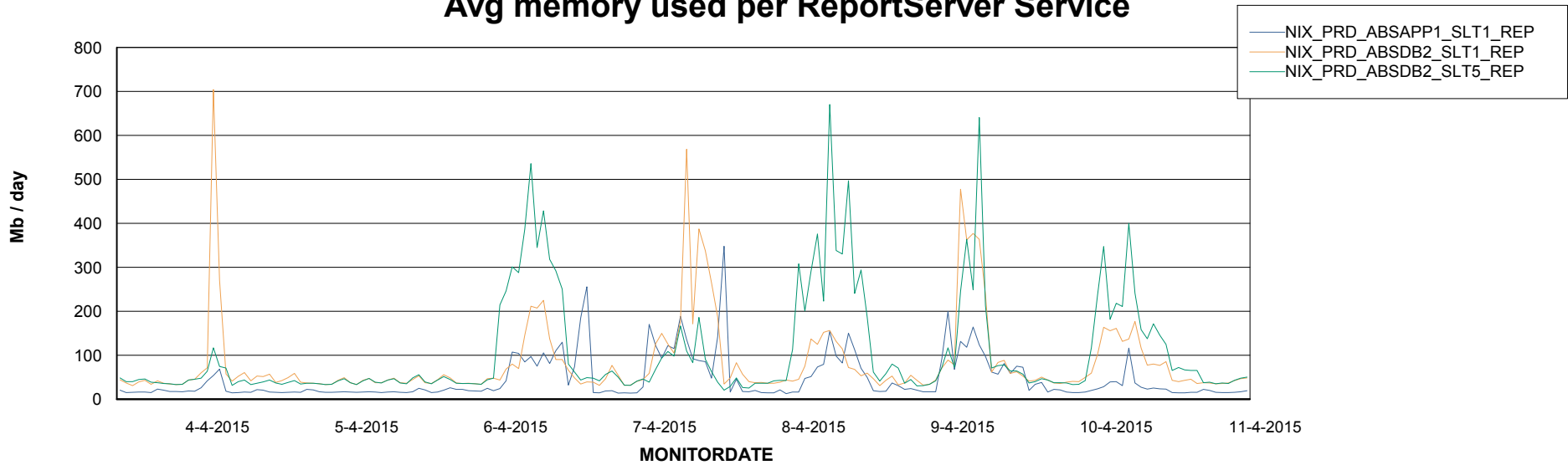


=====
ABSolute Application ReportServer Services
=====

Disaster per ReportServer



Avg memory used per ReportServer Service



Weekly SLA Customer Report

Customer NIX_Production
Database ID 51



Disaster per ABS component

