

Weekly SLA Customer Report

Customer LLG_Production
 Database ID 53



=====
 HARDDISK USAGE LLG_PRD_BI01
 =====

	Total disk space on C (GB)	Free disk space on C (GB)
11-4-2015	559	379
10-4-2015	559	379
9-4-2015	559	379
8-4-2015	559	379
7-4-2015	559	380
6-4-2015	559	380
5-4-2015	559	380

=====
 HARDDISK USAGE LLG_PRD_OR01
 =====

	Total disk space on C (GB)	Free disk space on C (GB)	Total disk space on D (GB)	Free disk space on D (GB)
11-4-2015	279	177	600	111
10-4-2015	279	177	600	112
9-4-2015	279	177	600	113
8-4-2015	279	177	600	126
7-4-2015	279	177	600	141
6-4-2015	279	177	600	143
5-4-2015	279	177	600	167

Weekly SLA Customer Report

Customer LLG_Production
 Database ID 53



=====
 HARDDISK USAGE LLG_PRD_OR2
 =====

	Total disk space on C (GB)	Free disk space on C (GB)	Total disk space on D (GB)	Free disk space on D (GB)
11-4-2015	293	247	545	185
10-4-2015	293	247	545	186
9-4-2015	293	247	545	188
8-4-2015	293	247	545	201
7-4-2015	293	247	545	215
6-4-2015	293	247	545	217
5-4-2015	293	247	545	241

=====
 HARDDISK USAGE LLG_PRD_vABS01
 =====

	Total disk space on C (GB)	Free disk space on C (GB)	Total disk space on D (GB)	Free disk space on D (GB)
11-4-2015	150	91	150	143
10-4-2015	150	91	150	143
9-4-2015	150	91	150	143
8-4-2015	150	91	150	143
7-4-2015	150	92	150	143
6-4-2015	150	92	150	143
5-4-2015	150	92	150	143

Weekly SLA Customer Report

Customer LLG_Production
 Database ID 53



=====
 HARDDISK USAGE LLG_PRD_vABS02
 =====

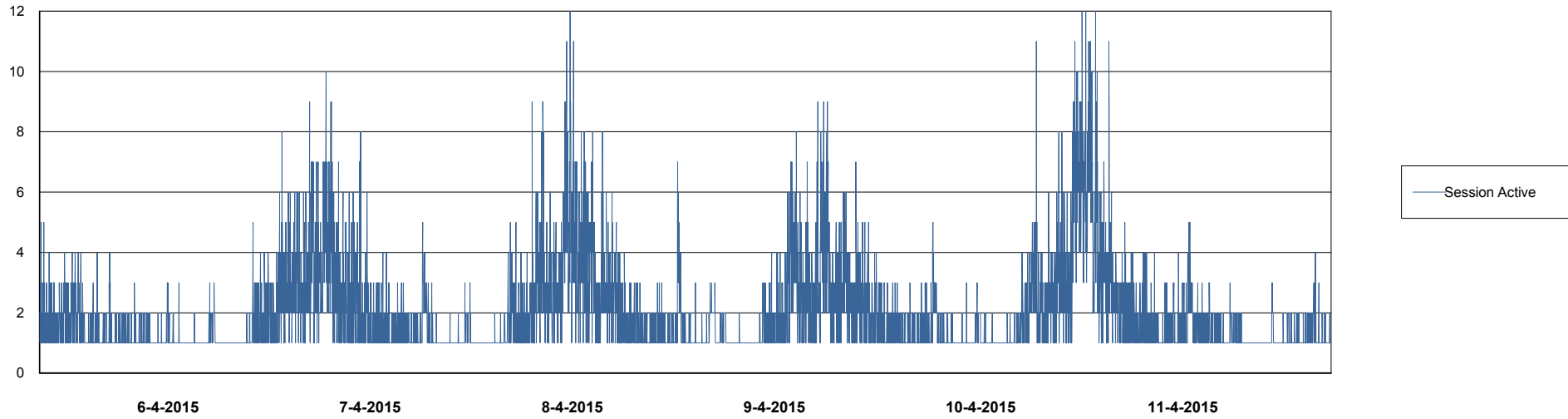
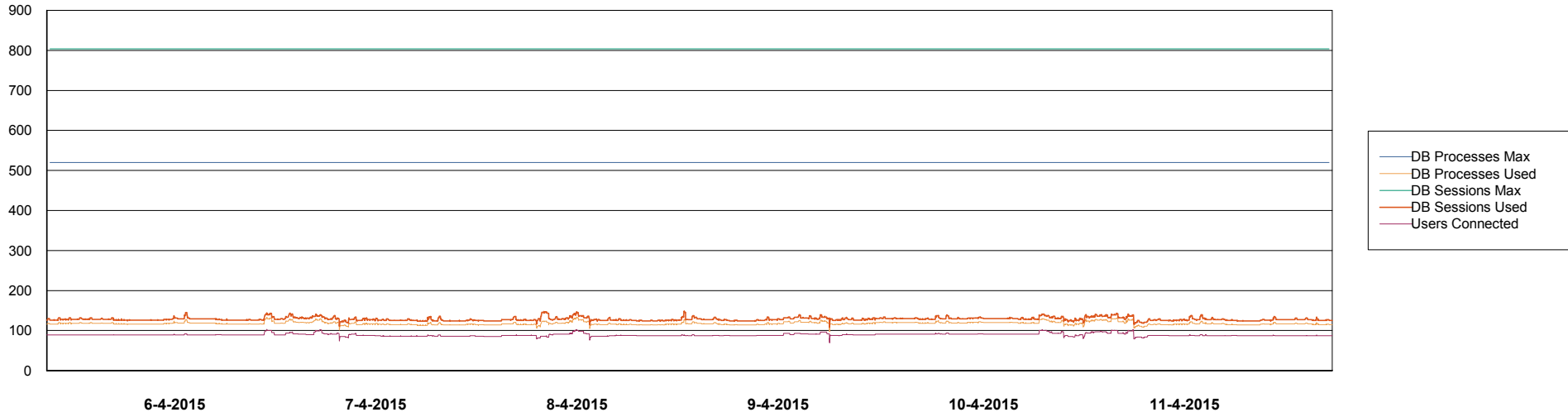
	Total disk space on C (GB)	Free disk space on C (GB)	Total disk space on D (GB)	Free disk space on D (GB)
11-4-2015	150	99	150	124
10-4-2015	150	100	150	124
9-4-2015	150	101	150	124
8-4-2015	150	101	150	124
7-4-2015	150	101	150	124
6-4-2015	150	101	150	124
5-4-2015	150	101	150	124

Weekly SLA Customer Report

Customer LLG_Production
Database ID 53



DATABASE PERFORMANCE LLGDB_Production

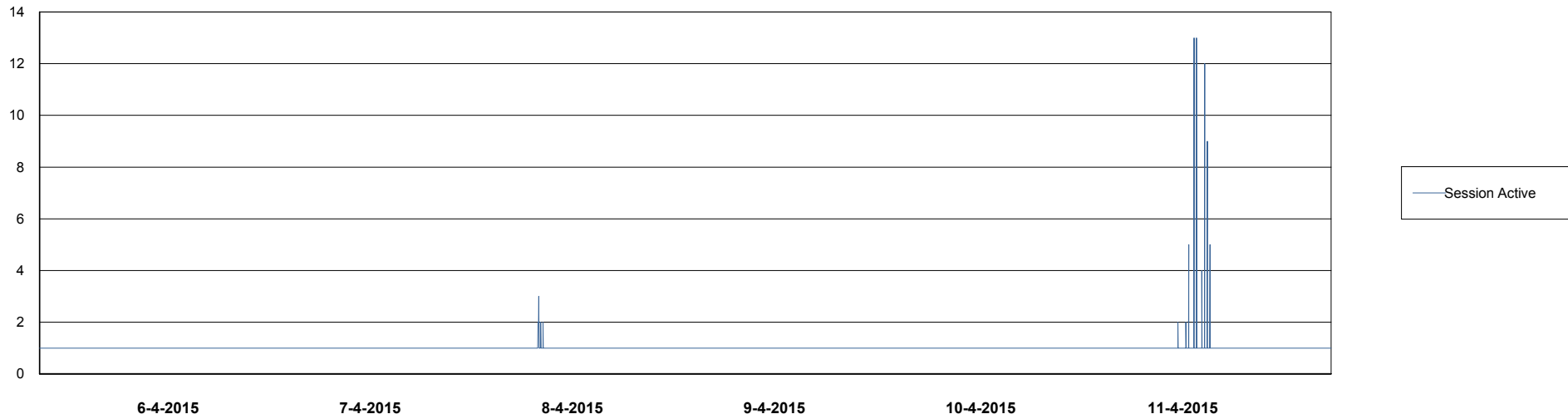
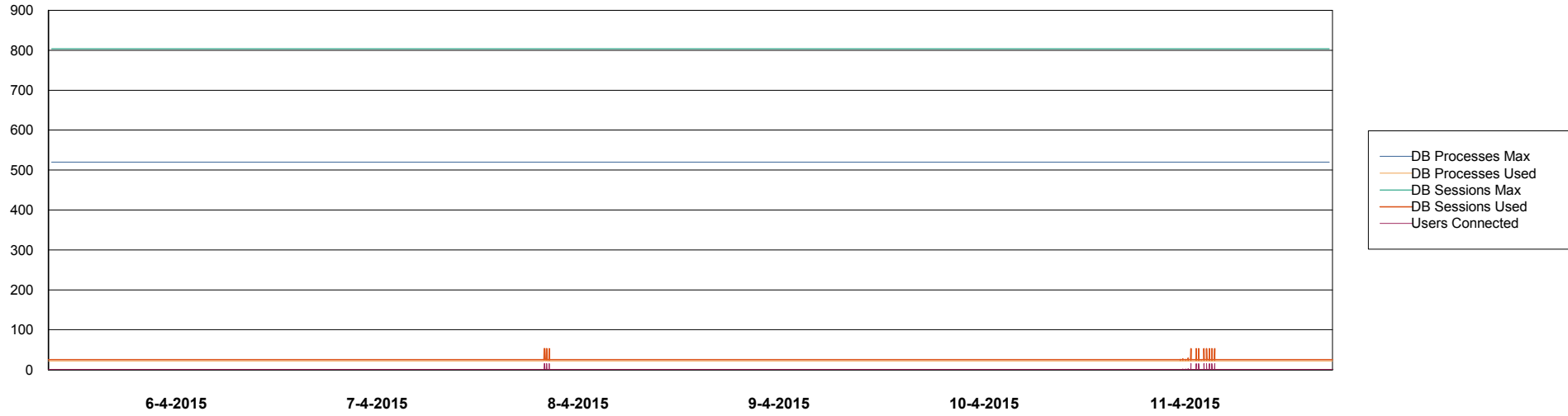


Weekly SLA Customer Report

Customer LLG_Production
Database ID 53



DATABASE PERFORMANCE LLGDB_Standby



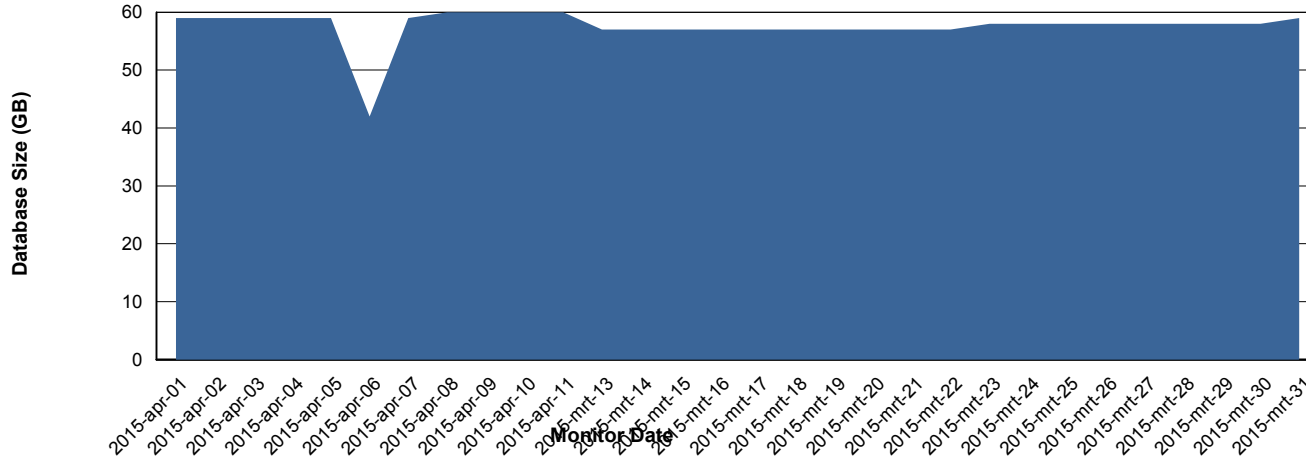
Weekly SLA Customer Report

Customer LLG_Production
 Database ID 53



=====
 DATABASE SIZE LLGDB_Production
 =====

Database growth over last month



=====
 DATABASE TABLESPACES LLGDB_Production
 =====

TOTAL DATABASE SIZE PER TABLESPACE

Date	Tablespace Name	Filesize (Gb)	Usedsize (Gb)	Percentage free
11-4-2015	ABSDATA	28	21	25
	INDX	44	36	18
10-4-2015	ABSDATA	28	21	25
	INDX	44	36	18
9-4-2015	ABSDATA	28	21	25
	INDX	44	36	18
8-4-2015	ABSDATA	28	21	25
	INDX	44	36	18
7-4-2015	ABSDATA	28	21	25
	INDX	44	36	18
6-4-2015	ABSDATA	28	20	29
	INDX	44	36	18
5-4-2015	ABSDATA	28	20	29
	INDX	44	36	18

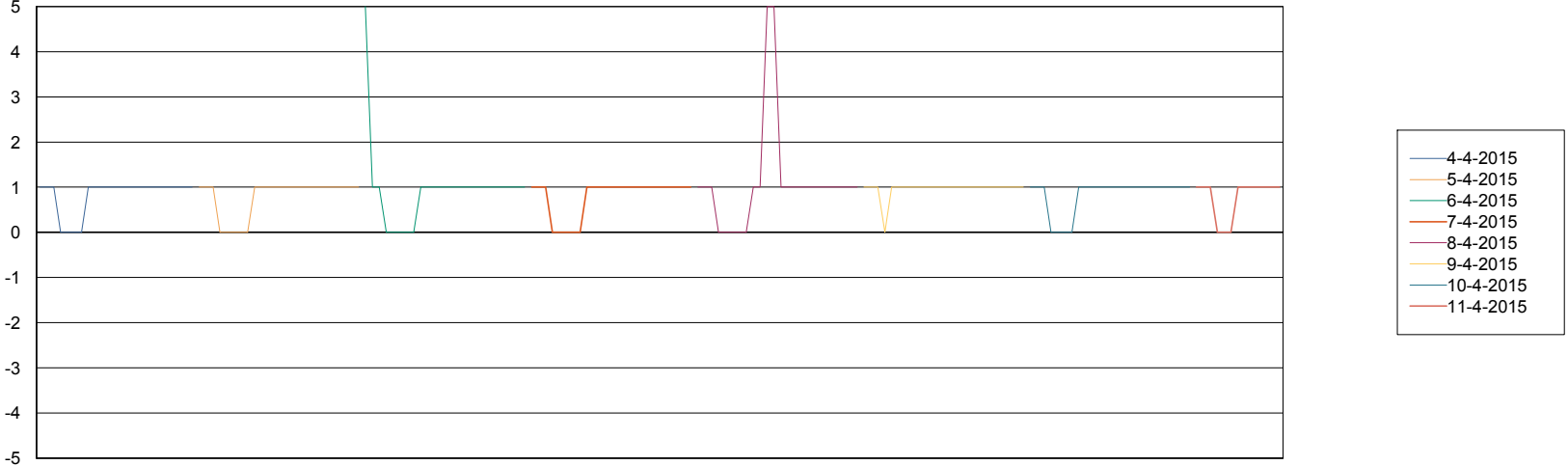
Weekly SLA Customer Report

Customer LLG_Production
Database ID 53



=====
STANDBY DATABASE HEALTH LLG_Production
=====

Recovery lag for last 7 days



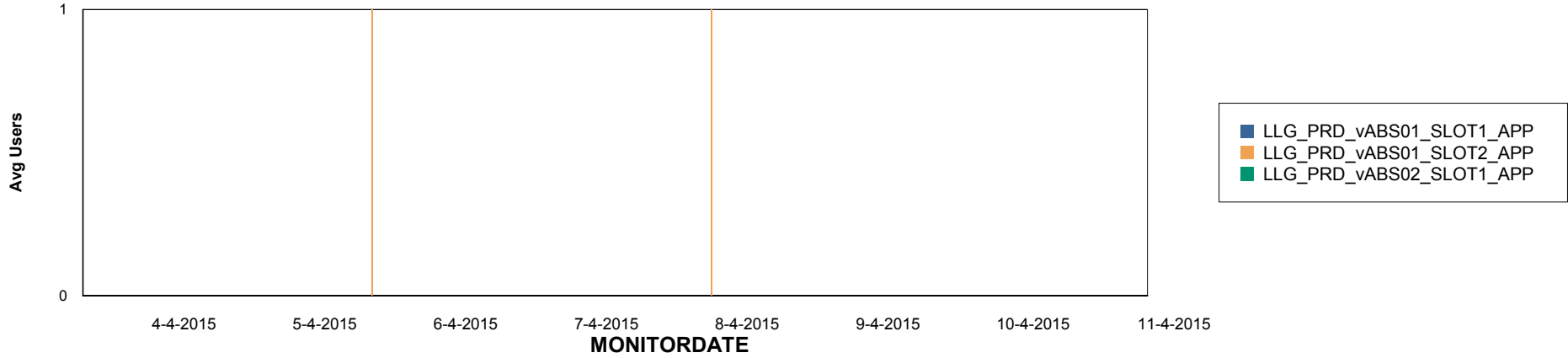
Weekly SLA Customer Report

Customer LLG_Production
Database ID 53

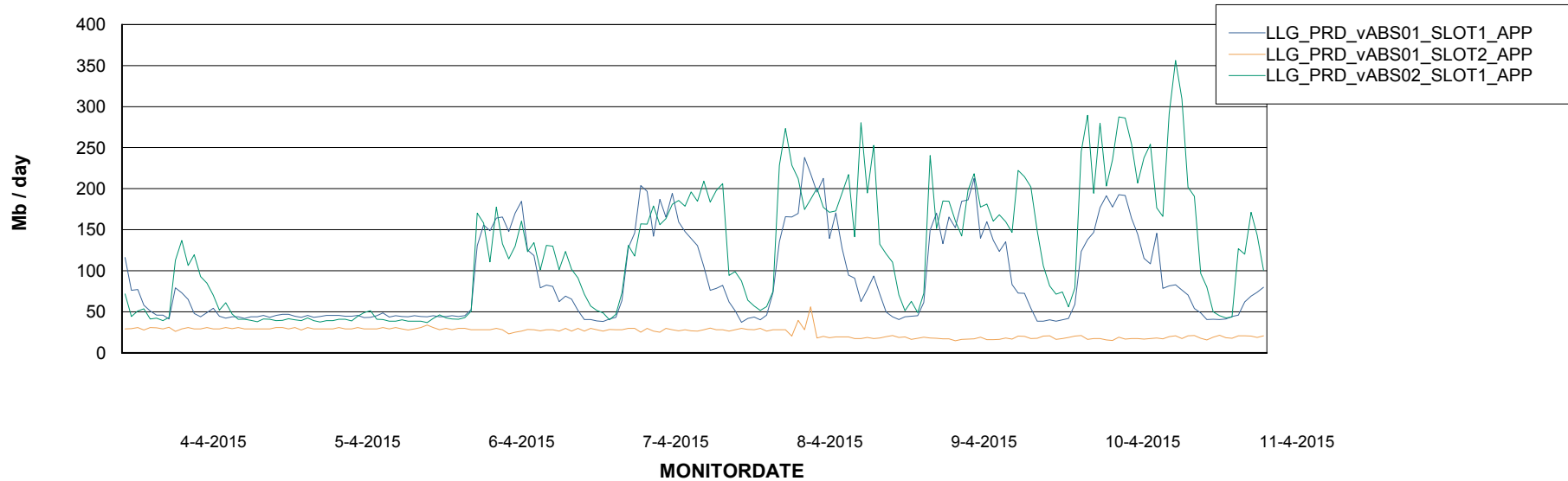


ABSolute Application Server Services

Disaster per ABS Server



Avg memory used per ABS Server Service



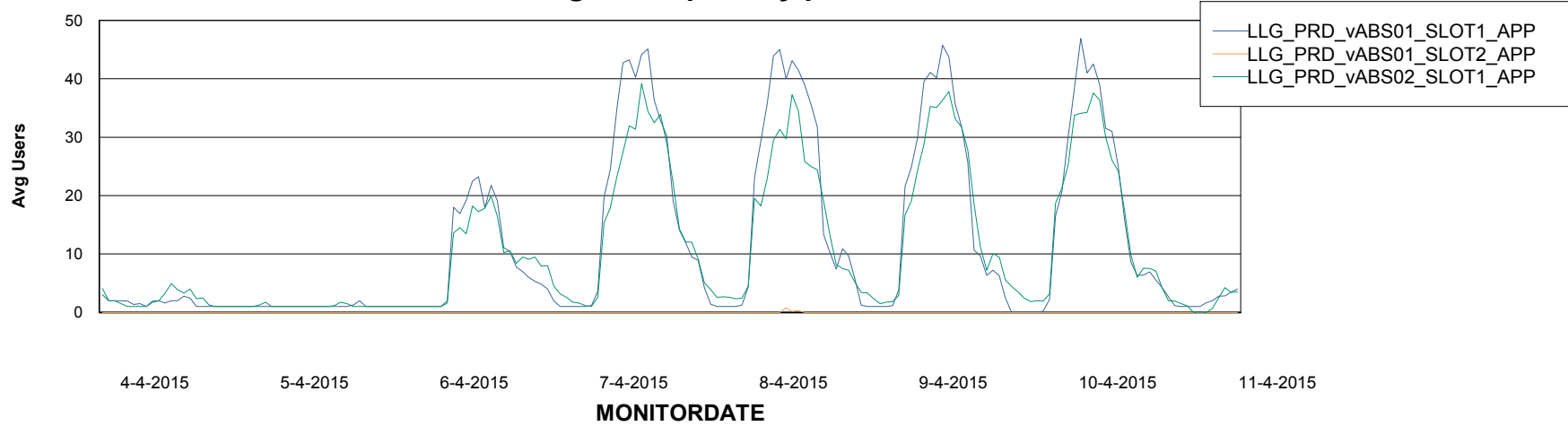
Weekly SLA Customer Report

Customer LLG_Production
Database ID 53



=====
ABSolute Application Server Services
=====

Avg users per day per ABS server



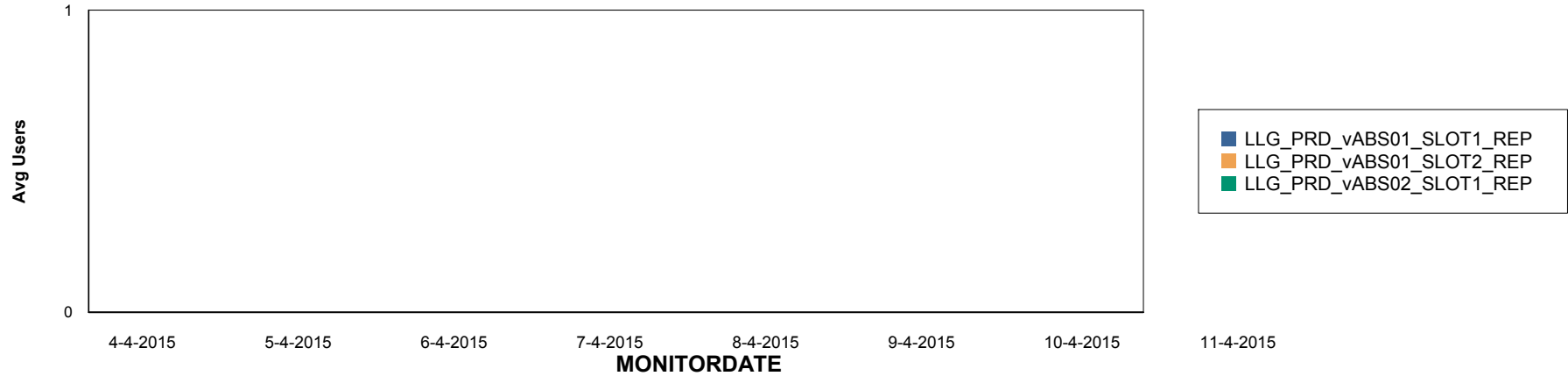
Weekly SLA Customer Report

Customer LLG_Production
Database ID 53

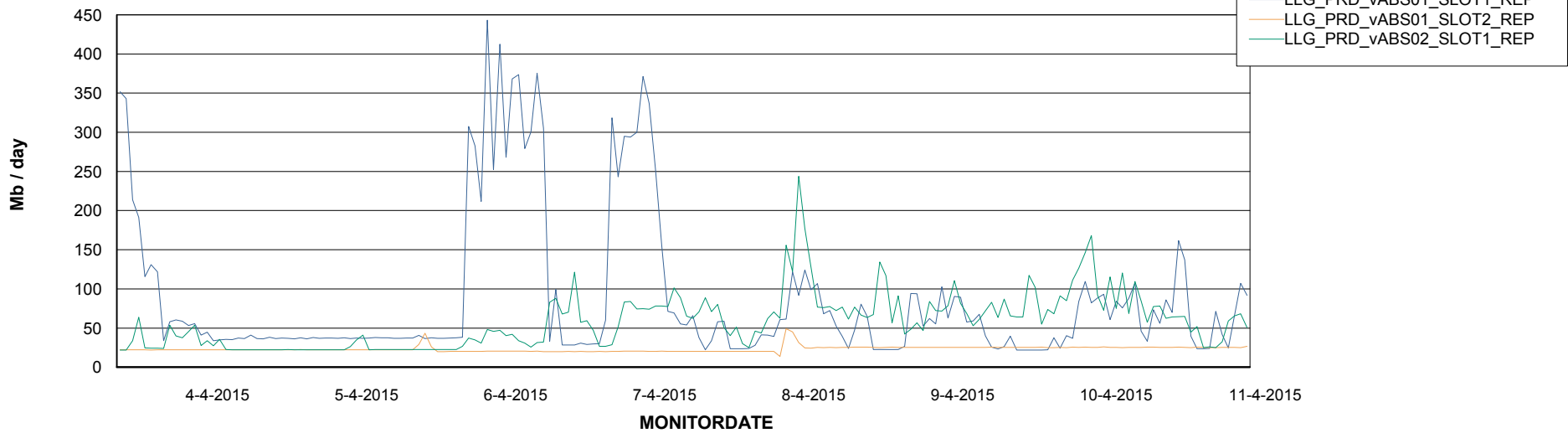


=====
ABSolute Application ReportServer Services
=====

Disaster per ReportServer



Avg memory used per ReportServer Service



Weekly SLA Customer Report

Customer LLG_Production
Database ID 53



Disaster per ABS component

