

Weekly SLA Customer Report

Customer JWR Production
 Database ID 43



=====
 HARDDISK USAGE JWR_PRD_JWR-ABS-01
 =====

	Used disk space on / (GB)	Total disk space on / (GB)	Free disk space on / (GB)
11-4-2015	27	49	19
10-4-2015	27	49	19
9-4-2015	29	49	18
8-4-2015	28	49	18
7-4-2015	27	49	19

=====
 HARDDISK USAGE JWR_PRD_JWR-ABS-02
 =====

	Used disk space on / (GB)	Total disk space on / (GB)	Free disk space on / (GB)
11-4-2015	29	49	18
10-4-2015	29	49	18
9-4-2015	30	49	16
8-4-2015	30	49	17
7-4-2015	29	49	18

=====
 HARDDISK USAGE JWR_PRD_JWR-ODB-01
 =====

Weekly SLA Customer Report

Customer JWR Production
 Database ID 43



	Used disk space on / (GB)	Total disk space on / (GB)	Free disk space on / (GB)
11-4-2015	82	148	59
10-4-2015	82	148	58
9-4-2015	82	148	58
8-4-2015	83	148	58
7-4-2015	84	148	57

=====
 HARDDISK USAGE JWR_PRD_JWR-ODB-02
 =====

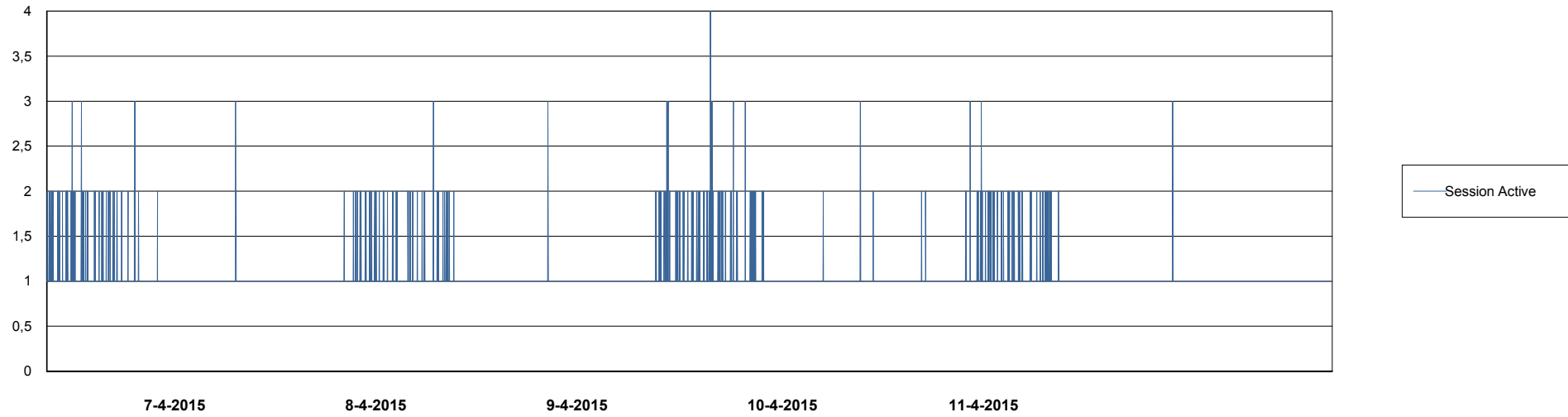
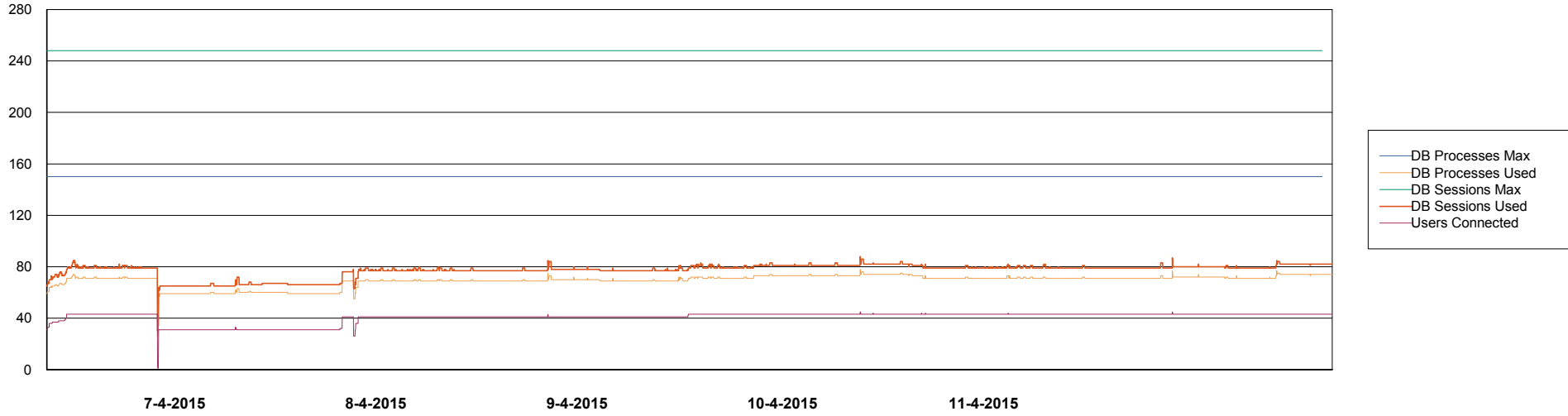
	Used disk space on / (GB)	Total disk space on / (GB)	Free disk space on / (GB)
11-4-2015	92	138	39
10-4-2015	92	138	39
9-4-2015	92	138	39
8-4-2015	92	138	39
7-4-2015	93	138	38

Weekly SLA Customer Report

Customer JWR Production
Database ID 43



DATABASE PERFORMANCE JWRDB_Production



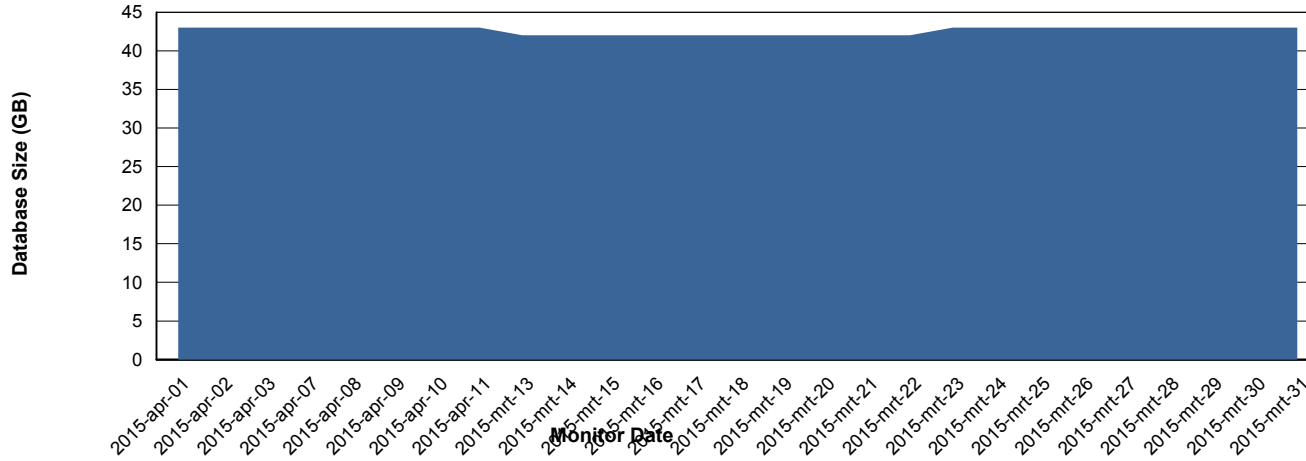
Weekly SLA Customer Report

Customer JWR Production
 Database ID 43



=====
 DATABASE SIZE JWRDB_Production
 =====

Database growth over last month



=====
 DATABASE TABLESPACES JWRDB_Production
 =====

TOTAL DATABASE SIZE PER TABLESPACE

Date	Tablespace Name	Filesize (Gb)	Usedsize (Gb)	Percentage free
11-4-2015	ABSDATA	18	12	33
	INDX	38	30	21
10-4-2015	ABSDATA	18	12	33
	INDX	38	30	21
9-4-2015	ABSDATA	18	12	33
	INDX	38	30	21
8-4-2015	ABSDATA	18	12	33
	INDX	38	30	21
7-4-2015	ABSDATA	18	12	33
	INDX	38	30	21

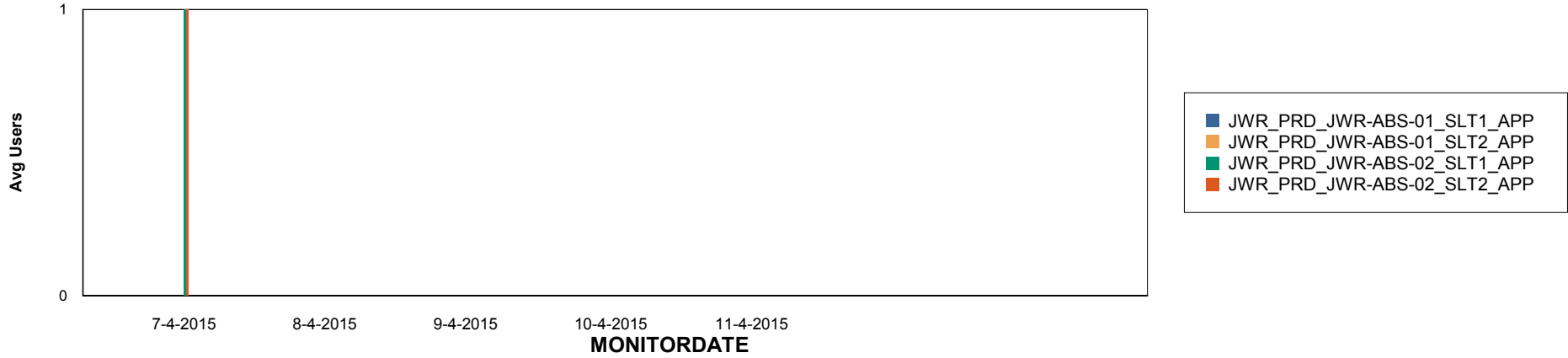
Weekly SLA Customer Report

Customer JWR Production
Database ID 43

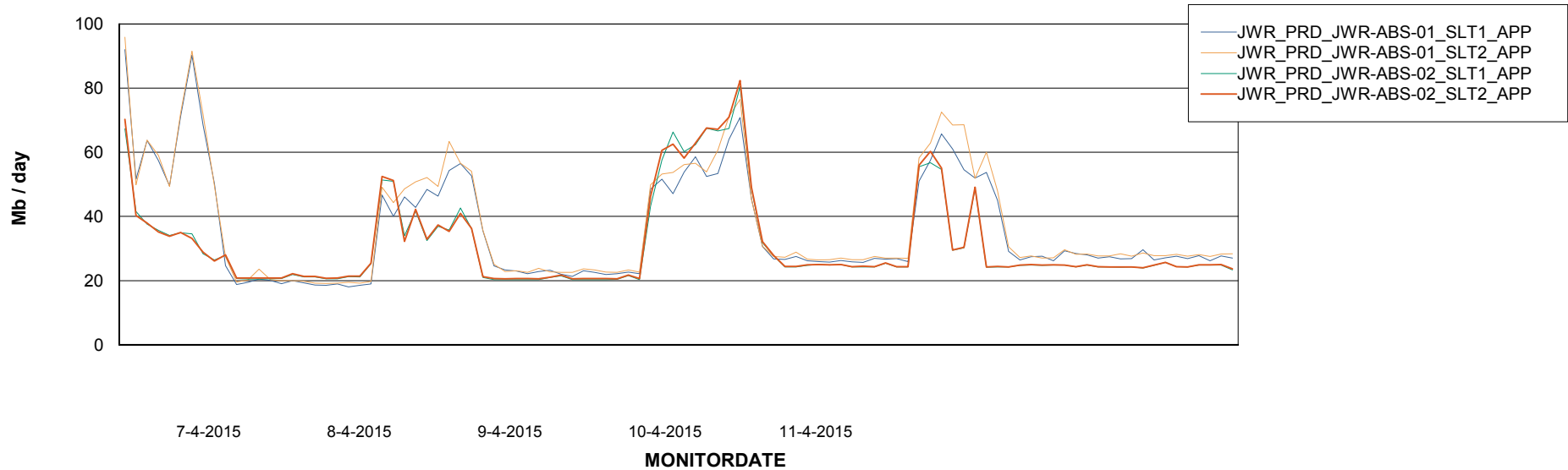


ABSolute Application Server Services

Disaster per ABS Server



Avg memory used per ABS Server Service



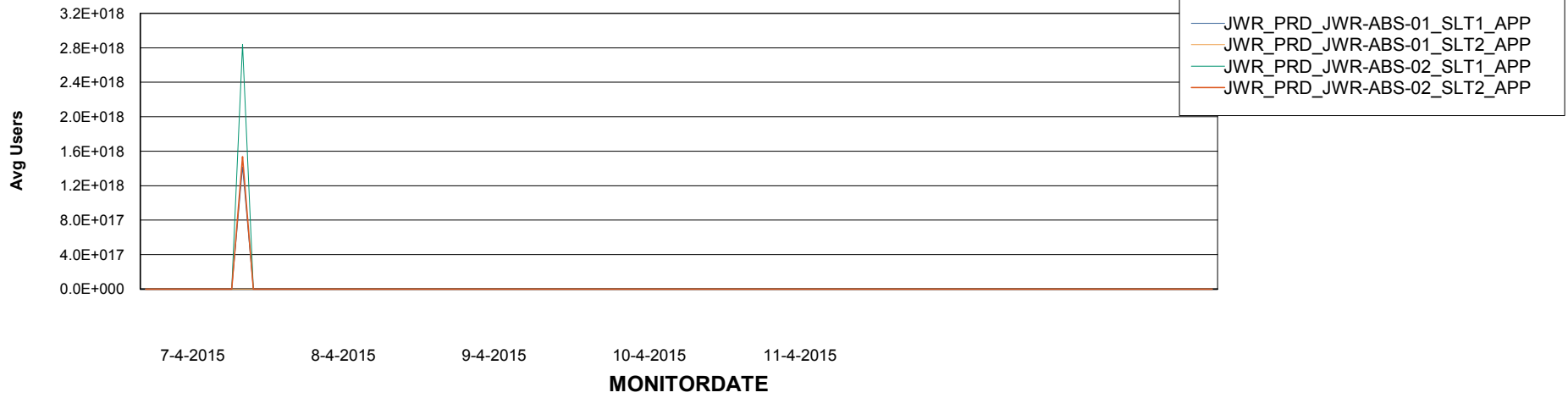
Weekly SLA Customer Report

Customer JWR Production
Database ID 43



=====
ABSolute Application Server Services
=====

Avg users per day per ABS server



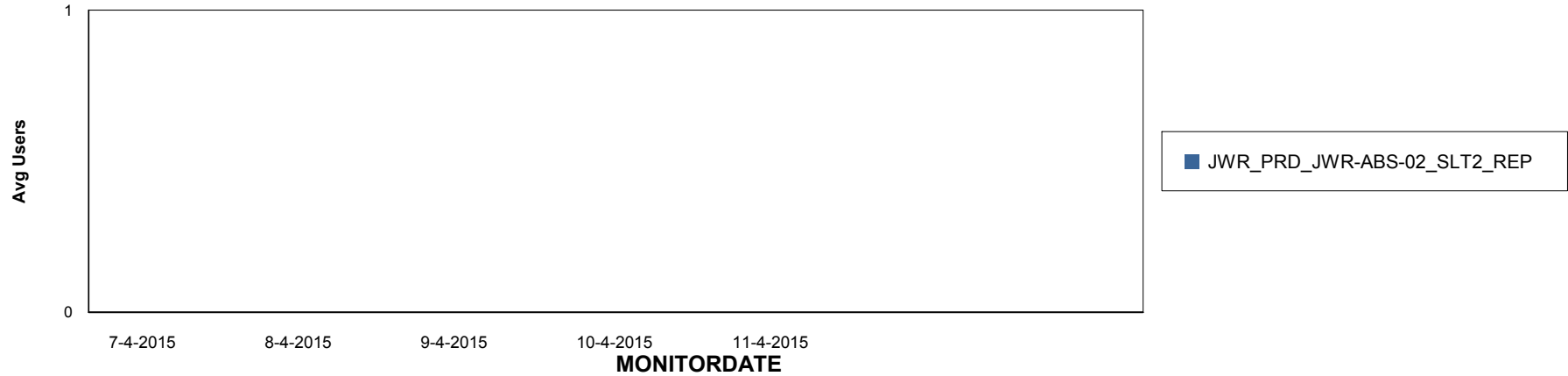
Weekly SLA Customer Report

Customer JWR Production
Database ID 43

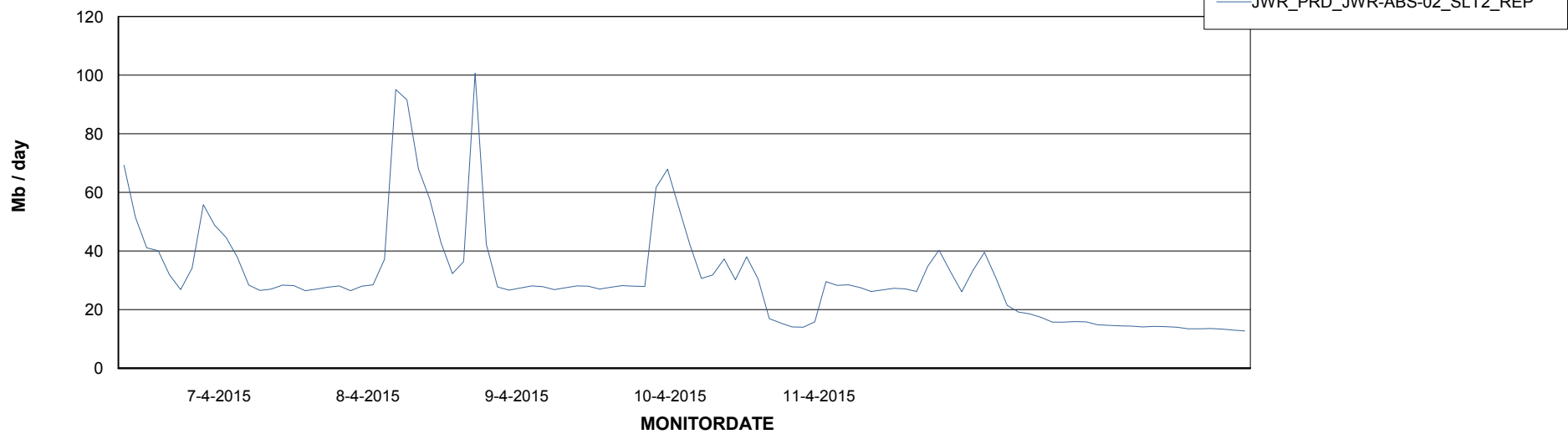


=====
ABSolute Application ReportServer Services
=====

Disaster per ReportServer



Avg memory used per ReportServer Service



Weekly SLA Customer Report

Customer JWR Production
Database ID 43



Disaster per ABS component

